



Vedantaa

— 2 & 3 BHK Simplifying Your Life —

MOSHI



APEX

— L I F E S P A C E S —

Apex Lifespaces stands for a bold vision — to redefine urban living with thoughtfully crafted homes and spaces that inspire, uplift, and endure. Built on a foundation of trust, quality, and innovation, we are dedicated to creating living environments where families thrive and lifestyles flourish. At Apex Lifespaces, every project is a reflection of meticulous planning, modern design, and attention to detail. From selecting prime locations to ensuring premium construction, we focus on delivering spaces that balance comfort, aesthetics, and long-term value. Whether you're buying your first home or investing in a future-ready space, Apex Lifespaces is committed to exceeding expectations and turning your aspirations into reality



Trusted Group for
more than 8 Years



Best
Quality



Superb
Planning



Customer
Delight



Timely
Possession





At Apex Group, we are driven by a commitment to excellence and a passion for creating exceptional living spaces. Established in Pune, Apex Group has been at the forefront of real estate development, delivering thoughtfully designed projects that redefine urban living. Our portfolio spans across premium residential developments, commercial spaces, and luxury townships, each meticulously crafted to offer a perfect blend of aesthetics, functionality, and sustainability. With a customer-centric approach, we ensure that every project embodies superior quality, innovative designs, and modern amenities, providing our clients with a lifestyle of comfort and convenience. Our team of experienced professionals, architects, and engineers work seamlessly to transform visions into reality, ensuring timely delivery and unparalleled craftsmanship. At Apex Group, we don't just build structures – we create thriving communities where families can grow, dreams can flourish, and memories are made. Our commitment to transparency, integrity, and excellence has earned us the trust of countless clients and made us a preferred choice in Pune's real estate market. Join us on a journey of excellence.

Completed Projects

- ✓ The Butterfly, Moshi
- ✓ Kasturi Homes, Kiwale
- ✓ Jeevan Vishwa, Moshi
- ✓ Jeevan Upvan, Sector 29, Ravet
- ✓ Nakshatra Sector 18, Chikhali Pradhikaran
- ✓ Jeevan Upvan Bungalows, Sector 29, Ravet



Unmatched Connectivity at Moshi

Located in the well-planned suburb of PCMC, Moshi offers seamless connectivity to key suburbs, Pune city, and beyond, thanks to its thoughtfully developed roads and infrastructure



Highway Only 5 Minutes Away

The Pune-Nashik Highway is right around the corner, making travel swift and convenient

Exhibition & Convention Centre – 10 Minutes Away

The Pune International Exhibition and Convention Center, the country's largest of its kind, is located just minutes from Vedantaa.

Shopping & Entertainment Just 15 Minute Away

With Spine City Mall in the neighborhood, your dose of shopping, movies, and leisure is always close at hand.

Adventure 15 Minutes Away

The upcoming Deer Safari Park near Vedantaa brings an exciting escape into nature right to your doorstep.

IT Hubs 15 Minutes Away

Reach the Talawade IT Park quickly and effortlessly, ensuring a hassle-free commute to work.

Airport Just 25 Minutes Away

Enjoy easy access to Pune International Airport, linking you to major domestic and global destinations.

Key Places

Educational Institutes	20+
Hospitals	15+
Shopping Malls	3+
Hotels/Restaurants	15+
Adventure	5+

Note: The numbers mentioned above are approximate and may vary slightly. They represent key locations in the vicinity to give you a general sense of convenience and accessibility



88 Acres of Wilderness The Proposed Deer Safari Park

Spread across 88 acres, the upcoming Deer Safari Park promises a refreshing escape into nature. Designed to be adventurous, serene, and lush with greenery, this enchanting destination will offer a one-of-a-kind experience for nature lovers and thrill-seekers alike.



Pune International Exhibition & Convention Center –

Sambhaji Maharaj Statue –



Spanning **240** Acres

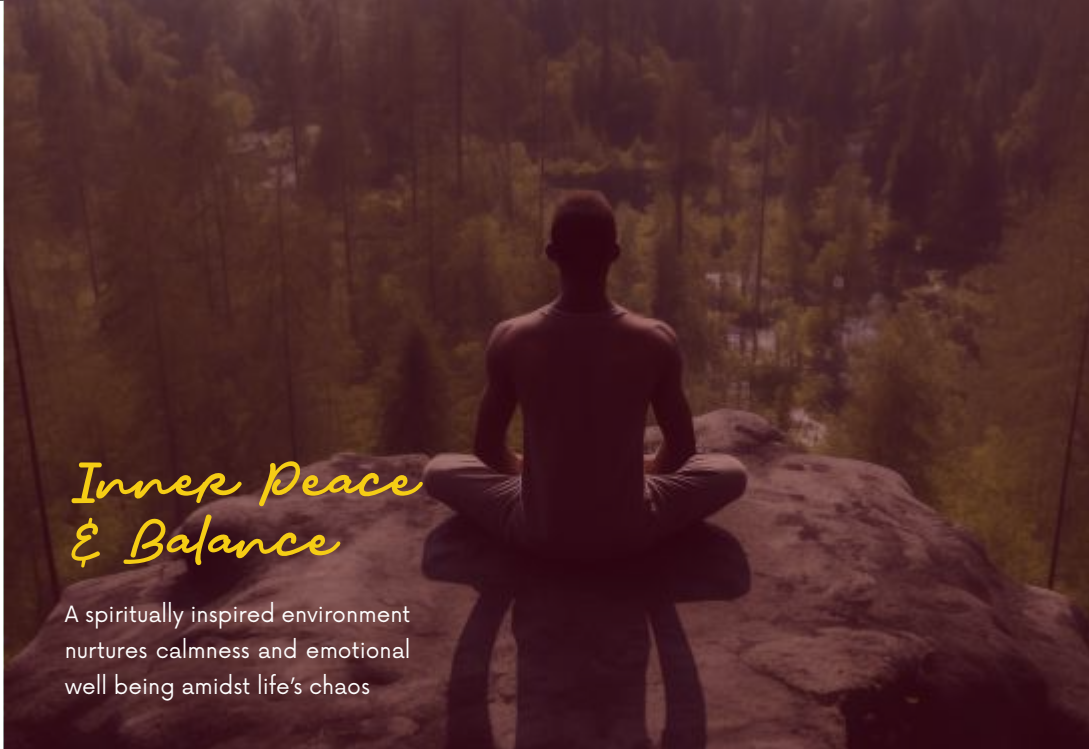
1000 Feet

The 12 million sq. ft. Pune International Exhibition & Convention Center is a landmark destination featuring a Metro station, grand gateway, mono-rail, scenic lake, Ferris wheel, world-class exhibition center, premium hotels, business zones, IT parks, and research hubs—blending innovation, leisure, and global connectivity.

A 100-foot bronze statue of Chhatrapati Sambhaji Maharaj is coming up in Moshi, Pune, at the Pune International Exhibition and Convention Centre. Crafted by renowned sculptor Ram Sutar with structural expertise from IIT Bombay and COEP, the monument will stand as a grand symbol of Maratha pride and history.

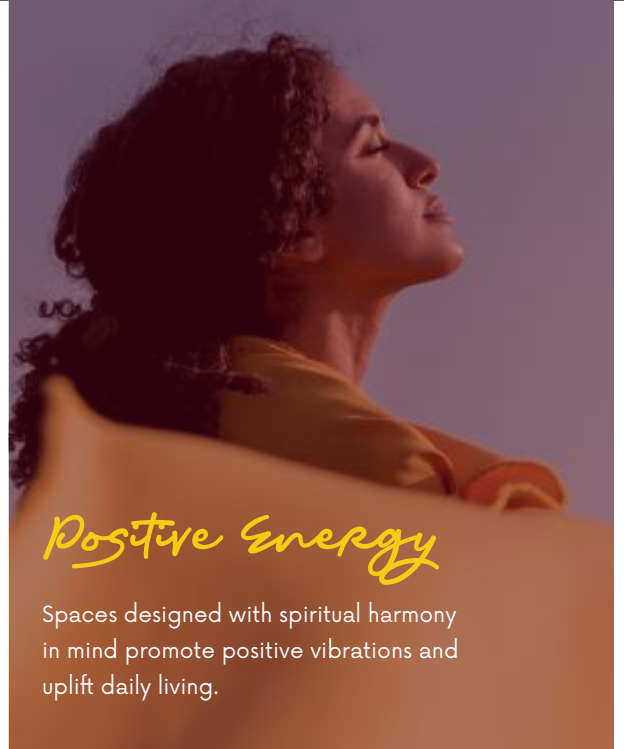


Home is a source of energy. It is a spiritual abode inspires the family to spend the day with higher energy than yesterday. Nowadays, people are moving away from spirituality due to various reasons such as work life, city life, etc. They are losing connection to spirituality, fresh air, sunlight, and the company of nature. India is land of spirituality. It is known for the very same thing that our youth is getting detached from. But now, spirituality is on the arrival; it's inviting you. It's your new spiritual home.



Inner Peace & Balance

A spiritually inspired environment nurtures calmness and emotional well being amidst life's chaos



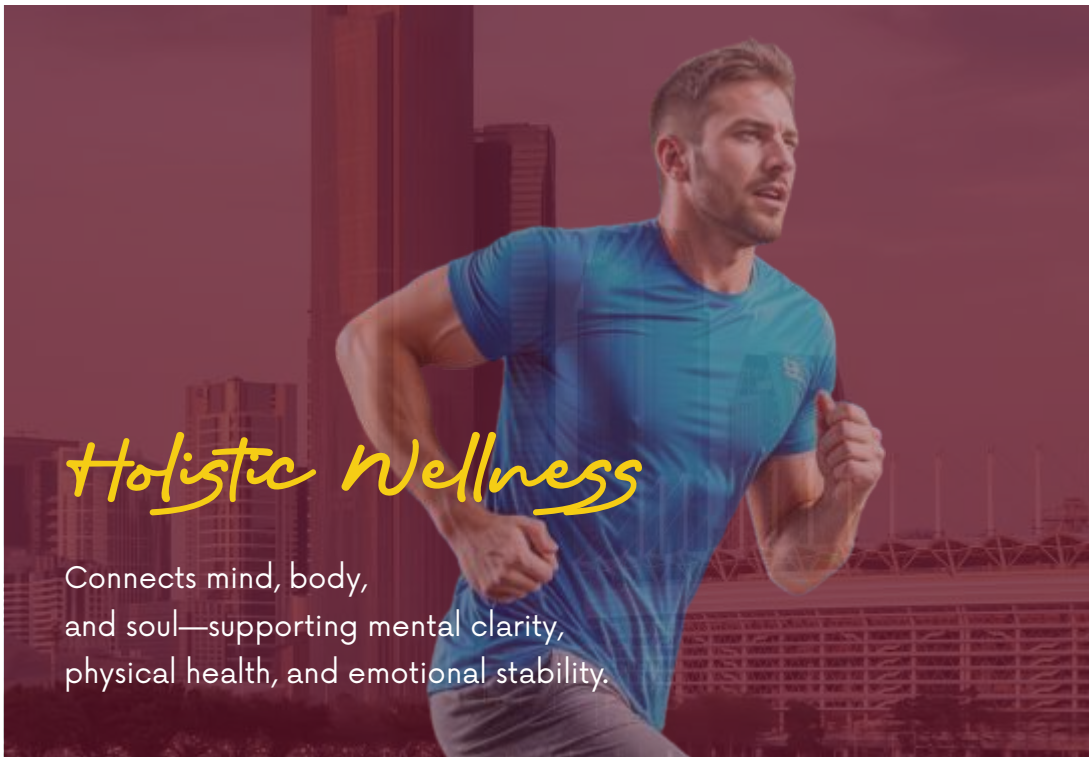
Positive Energy

Spaces designed with spiritual harmony in mind promote positive vibrations and uplift daily living.



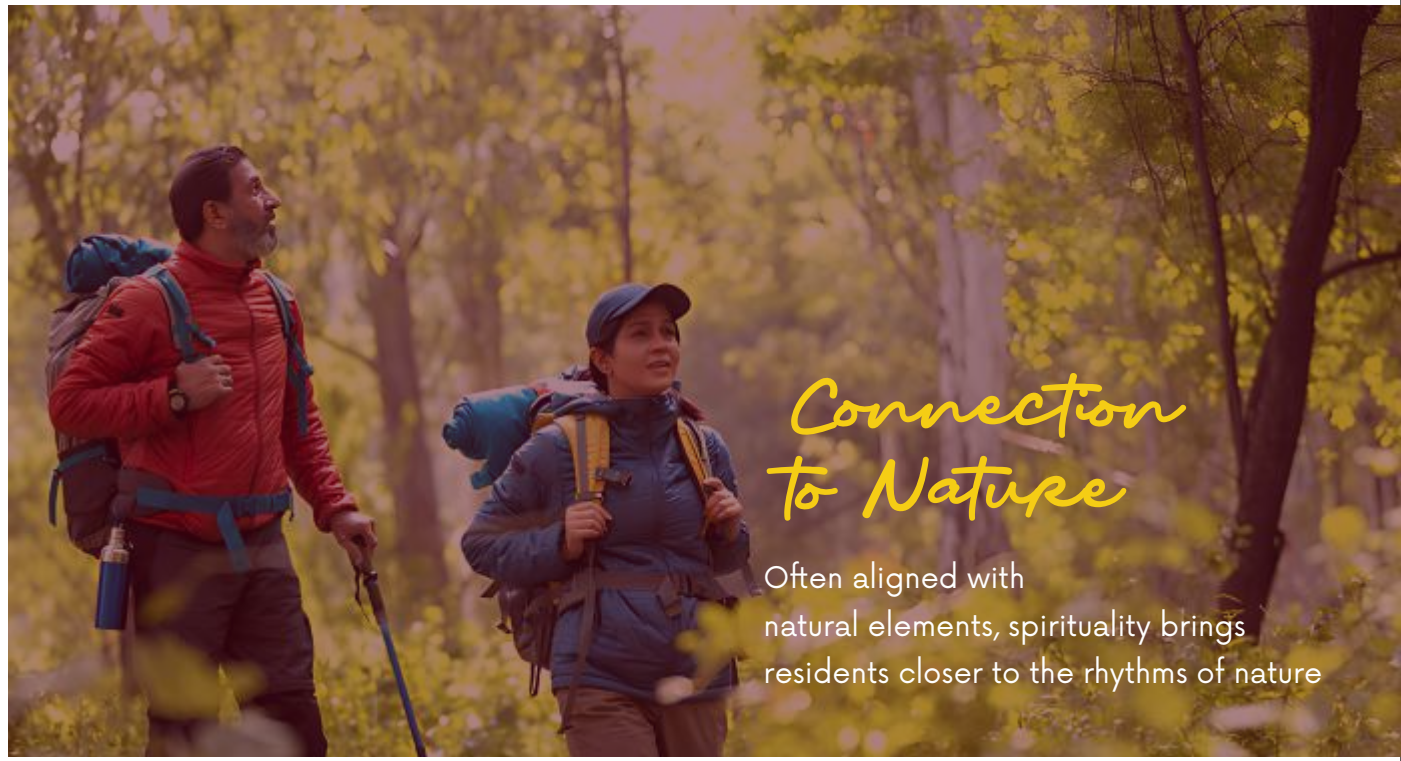
Mindful Living

Encourages conscious living, helping residents lead more meaningful and intentional lives



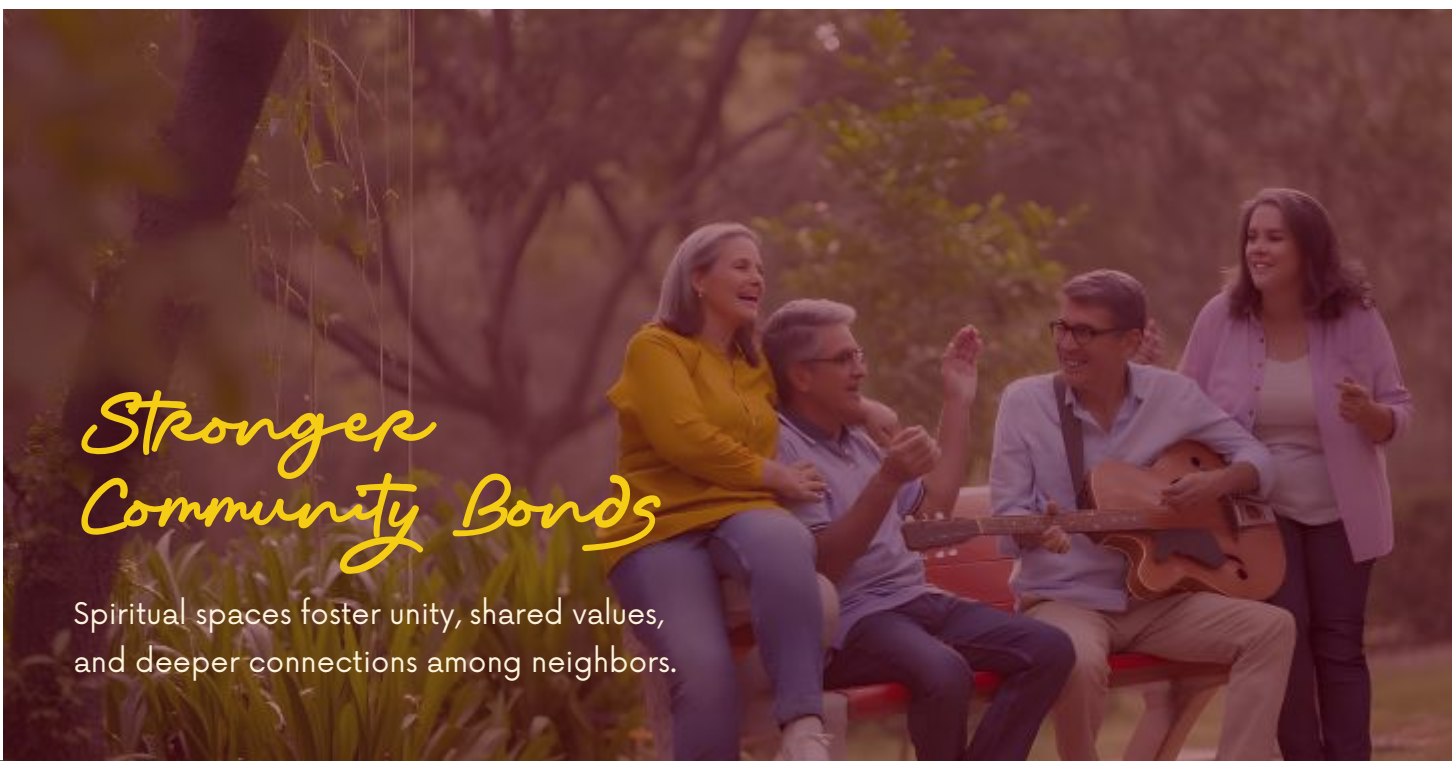
Holistic Wellness

Connects mind, body, and soul—supporting mental clarity, physical health, and emotional stability.



Connection to Nature

Often aligned with natural elements, spirituality brings residents closer to the rhythms of nature



Stronger Community Bonds

Spiritual spaces foster unity, shared values, and deeper connections among neighbors.



A Space to Reflect & Grow

Spiritual living spaces offer opportunities for personal growth, meditation, and self-discovery.



Why Spirituality Matters

Images Are Use Only For Visualization Purpose



*The Spiritual
Arrival is Imminent*

Vedantaa

— 2 & 3 BHK Simplifying Your Life —

Vedantaa Inspired from the lifestyle of vedic people during vedic period, we're offering you a life characterised by spirituality. Here, you'll thrive with modernity and feel energize with spirituality. Vedantaa is 2 & 3 BHK spiritual abode, that appears to those who wait and practice austerities. When it appears, its fruit is tastier as life's beautiful moments.



*A HOME
THAT TRULY
COMPLETES
YOU.*

Luxury homes, Privacy, and
Spiritual Space,
Perfectly Connected.





Vedashree Tapovan

Vedashree Tapovan – A Vision Rooted in Vedic Wisdom

Vedashree Tapovan is dedicated to reviving and sharing the profound knowledge of the Vedas in a way that enhances everyday living. With a vision to simplify and spread this ancient wisdom, the initiative seeks to uplift the quality of life for all.

At Vedantaa, you'll find yourself near this Vedic sanctuary, where the divine aura and spiritual energy gently permeate your home. It brings a transformative presence that elevates both your living space and your life, deeply contributing to your overall well-being.





Spirituality

*A soulful home for
mindful living.*

Spirituality is an important aspect that can have an enormous impact on our life. It elevates our mental state or well-being to the level where you are at peace and all you desire is nothing. Everything you think, desire, expect, and dislike comes down to nothing. Without spirituality, life is all chaos. With it, life is as calm as the ocean and as beautiful as the starry night.







*Elevated
Living,
Enlightened
Being.*

2 & 3 BHK Simplifying Your Life



REASONS TO COUNT ON US



Experience pleasant Weather throughout year.



Less Noise Pollution since fewer Crowded Place.



Fresh Air amidst Reserved Forest.



Mesmerizing views from your Bedroom.



Located in the most developing sub-urb of PCMC.



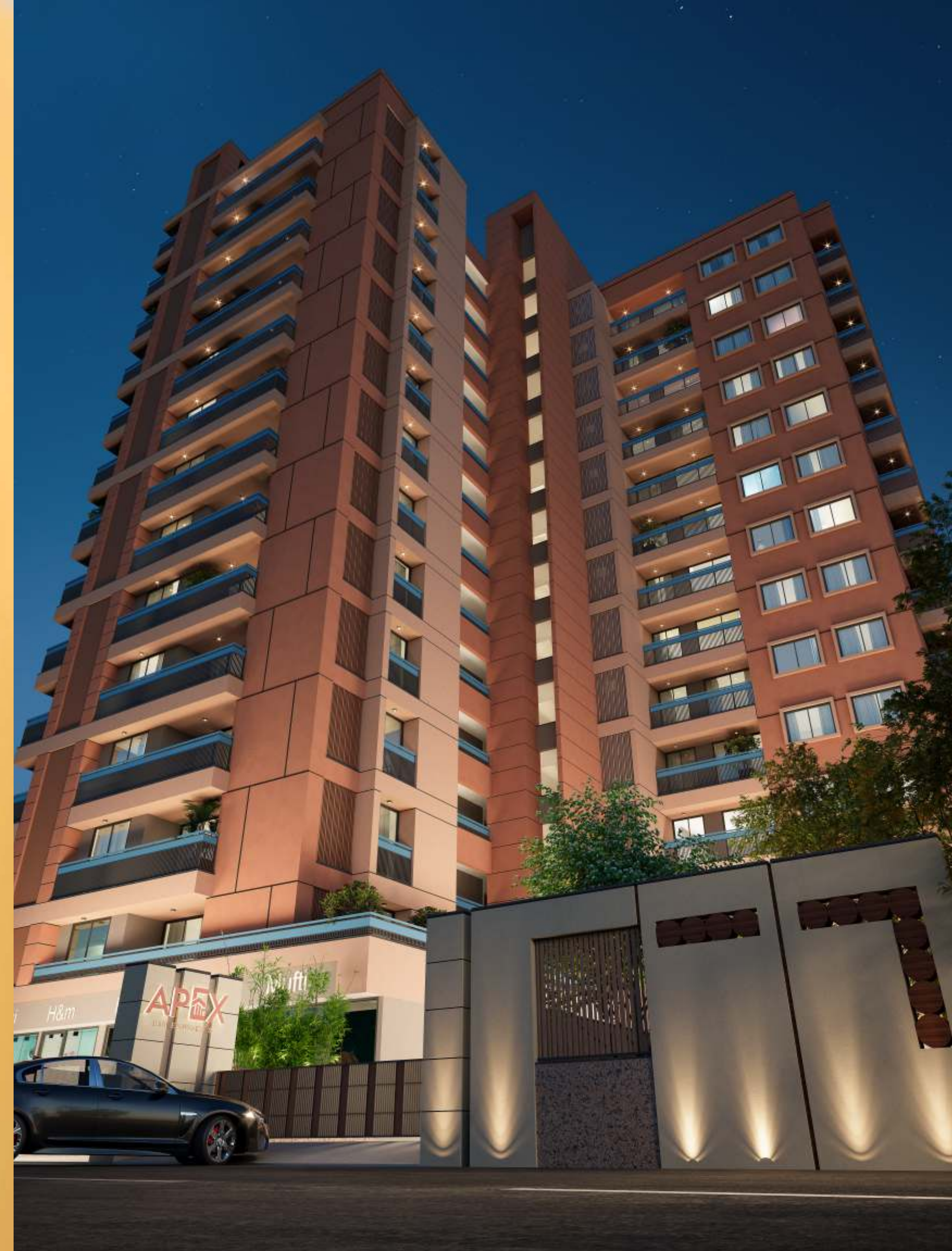
Divine places like Alandi & Dehu few Kms away.



5 mins away from Pune-Nashik Highway.



Serene place helps in Strengthening your Mental Health.



Vedantaa

— 2 & 3 BHK Simplifying Your Life —



Structures That Soar, Spaces
That Soothe.



Amenities



Open Gym

Work out; stay fit & enjoy good health.



Children's Play Area

Let your little ones make the most of their time.



Senior Citizens' Sit-out

Relaxation and leisure for the elderly.



Gazebo

Seat out area



Landscape Garden

Tree Plantation
Party Lawn

Where Every Window
Opens to Green



APEX
— LIFESPACES —



Grand Entrance Lobby



Ground Amenities



Roof Top



Roof Top Amenities



Vedantaa

— 2 & 3 BHK Simplifying Your Life —

Specifications

Structure

Earthquake resistant R.C.C. Structure

External & Internal Finish

Sand faced external plaster & Internal wall gypsum finish.

Tiles & Flooring

Vitrified Flooring in All Rooms. Anti Skid for Terrace & Toilet.
Dado tiles in Toilets

Paint

Tractor Emulsion for Internal Paint
Weather shield for exterior paint

Windows

Powder Coated Aluminium Sliding Windows
Bottom granite patti in all windows
Mosquito net for windows except bathroom
Safety grills in all windows Louvers ventilation in bathroom
Exhaust fan provision in bathrooms

Kitchen

Granite Platform with S. S. Sink.
Glazed Tiles above Kitchen platform.
Provision for Exhaust fan and Water Purifier Point

Plumbing

Concealed plumbing. Standard CP Fitting for Bathroom
toilets & Kitchen

Door

Attractive main door. Flush Doors with decorative both
side Lamination.

Electrification

Concealed copper wiring with branded MCB
Standard branded Modular switches
Ample Electric points
AC point in Master Bedroom
Provision for inverter point

Common Amenities

— Attractive Entrance Gate with Security Cabin

— Designer Entrance Lobby

— Lifts of Standard like Kone, Otis, Johnson or

Equivalent Brand

— CCTV Security System at Entrance

Gate & Parking

— Power Backup for Lifts and Common Area

— Common Washroom in Parking Area

— Rainwater Harvesting

— Dedicated Garden & Playground Space

— Driver Room

— Society Office

— Solar Power for Common Area

PICTORIAL VIEW

2 BHK Carpet -735 Sq.ft.

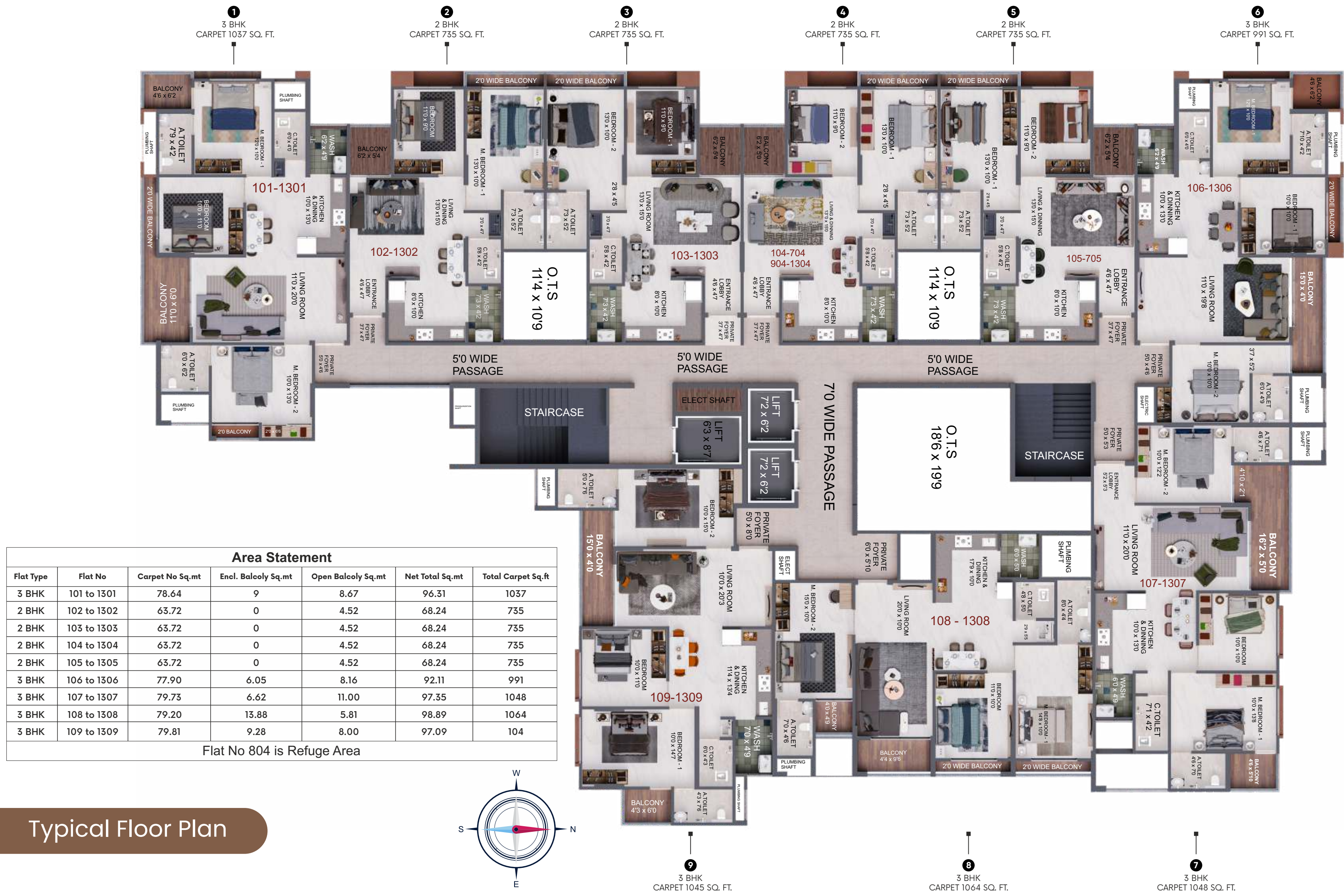


Import Note: Furniture layout served as a conceptual plan and can be subject to change and adjust according to the direction of the flat, Column positions, electrical and plumbing work.

3 BHK Carpet - 1064 Sq.ft.



Import Note: Furniture layout served as a conceptual plan and can be subject to change and adjust according to the direction of the flat, Column positions, electrical and plumbing work.



1
3 BHK
CARPET 1037 SQ. FT.

2
2 BHK
CARPET 735 SQ. FT.

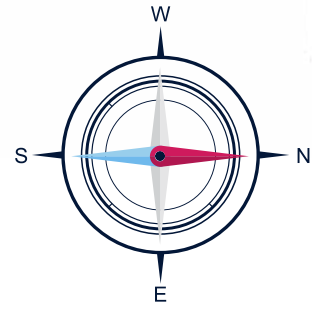
3
2 BHK
CARPET 735 SQ. FT.

4
2 BHK
CARPET 735 SQ. FT.

5
2 BHK
CARPET 735 SQ. FT.

6
3 BHK
CARPET 991 SQ. FT.

Area Statement						
Flat Type	Flat No	Carpet No Sq.mt	Encl. Balcoly Sq.mt	Open Balcoly Sq.mt	Net Total Sq.mt	Total Carpet Sq.ft
3 BHK	101 to 1301	78.64	9	8.67	96.31	1037
2 BHK	102 to 1302	63.72	0	4.52	68.24	735
2 BHK	103 to 1303	63.72	0	4.52	68.24	735
2 BHK	104 to 1304	63.72	0	4.52	68.24	735
2 BHK	105 to 1305	63.72	0	4.52	68.24	735
3 BHK	106 to 1306	77.90	6.05	8.16	92.11	991
3 BHK	107 to 1307	79.73	6.62	11.00	97.35	1048
3 BHK	108 to 1308	79.20	13.88	5.81	98.89	1064
3 BHK	109 to 1309	79.81	9.28	8.00	97.09	104
Flat No 804 is Refuge Area						



9
3 BHK
CARPET 1045 SQ. FT.

8
3 BHK
CARPET 1064 SQ. FT.

7
3 BHK
CARPET 1048 SQ. FT.

Typical Floor Plan

Vedantaa

— 2 & 3 BHK Simplifying Your Life —

— C R E D I T S —

— RCC CONSULTANT —



Arrow Consultant

— ARCHITECT & LANDSCAPE
DESIGNER —



Precision Architects
& Planners



S.R. Design

— BRAND CONSULTANT —



Mindfull Creative Studio LLP

— MEP CONSULTANTS —



JVS

— LEGAL CONSULTANT —

Legal Realty LLP -
Advocate Janak Lunkad



MahaRERA Reg No.
P52100080736
<https://maharera.mahaonline.gov.in>



 **9307901544 | 8308803296**

 **www.apexlifespaces.com**

Address - Vedantaa, Gat No. 253, Hawaldar wasti, Near by Kudale Garden, Moshi, Pune - 412105

A PROJECT BY

APEX
— L I F E S P A C E S —

STRATEGIC PARTNER

 **Mantra[®]
vastu**
Your Dream Is Our Mission.

Disclaimer: This brochure is purely conceptual and not a legal offering. Number of floors, flats or units may be revised due to amendment in development control rules. The developers reserve the rights to amend the layout, plans, elevations, specifications and amenities. The furniture layout displayed in the floor plans are indicative in nature and are not included with the actual apartment. The dimensions of the unit as mentioned are from "Bare wall" to "Bare wall". The perspective images shown in this brochure may not be to the scale or may not represent actual facade / elevation. The details of windows, paints, elevation features, landscaping, ground development, trees etc. in this brochure are an artist's impression and might be different from actual construction of building and development. The viewers affirm that he / she has not taken his / her decision of purchase/booking by viewing these images. The company is not responsible for the action of the viewer's booking / purchasing a unit relying on these images.