

PROJECT BY:
VIHAV
PILLAR OF EXCELLENCE



KEYSTONE 
PERFECTLY CRAFTED VILLAS

51
LIMITED
UNITS

4
BHK
VILLAS

A private address

elevated

KEYSTONE 51
PERFECTLY CRAFTED VILLAS

Where silence turns luxurious, and sunlight walks through every room like it belongs. Where luxury elevates without towering. This is Keystone 51. A limited collection of 51 villas, each crafted as a private world unto itself, and together, forming a skyline of serenity. For true elevation is measured in the way life feels, when it finally finds its perfect address.

SCAN FOR RERA

PAA15293/
020625/311227



gujrera.gujarat.gov.in



Grace that celebrates

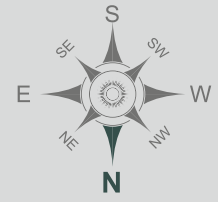
The villas stand with a quiet assurance rooted in balance, raised in beauty. The façade of these villas is a statement of scale and symmetry with broad terraces, generous balconies, and towering volumes that speak the language of privilege. This is architecture that breathes in metres, and lives in quiet magnitudes. Every inch planned for privacy; every view opened to the horizon: a design that gives space the luxury it deserves. At Keystone 51, beauty doesn't rise to impress. Instead, it stands apart in poise, presence and perfection. A home where grandeur feels grounded, and luxury finds meaning in proportion. Where space is not measured by walls, but by the sense of freedom it creates.

poise





layout plan





enchantment

The quiet spell of beauty in living

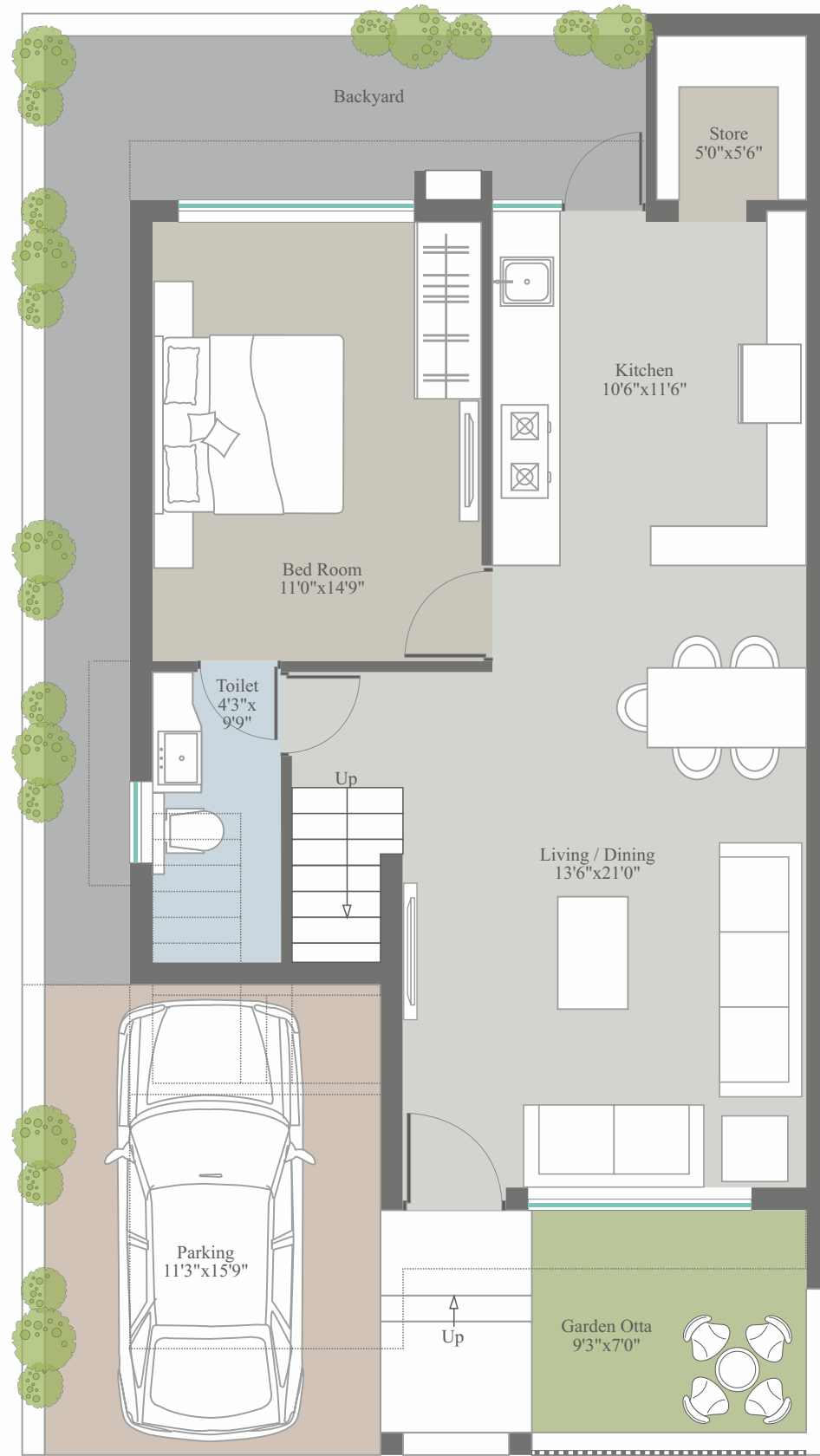
The architecture speaks softly of lines that flow, proportions that please, and details that never demand attention yet always deserve it. The landscaped edges, the generous balconies, and the greens that frame every view create a setting that feels calm, complete, and beautifully composed. There's a certain grace that lingers even before you step inside. It lives in the rhythm of the façades, in the soft interplay of sunlight and shadow.



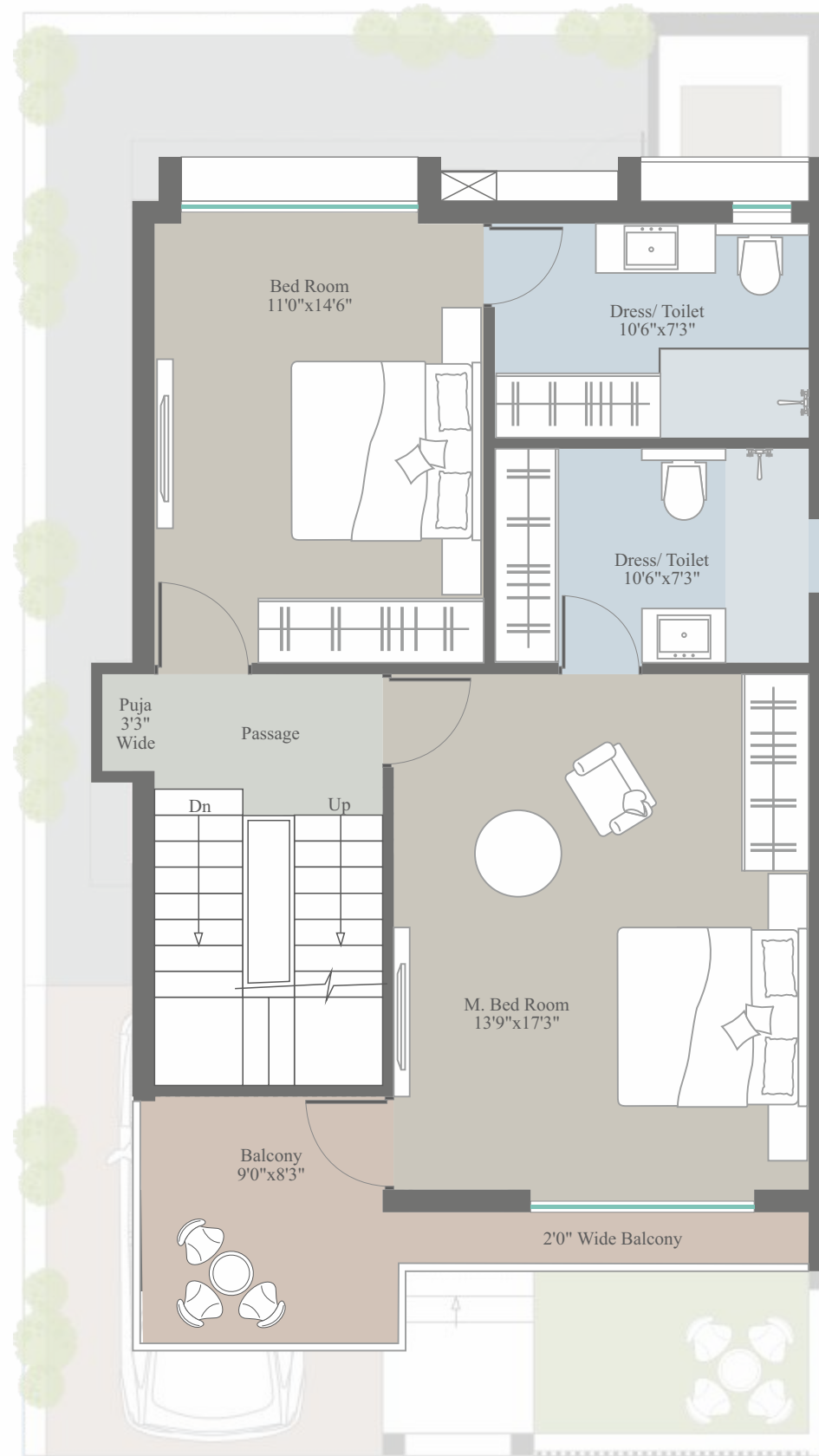
TYPE - A

PLOT NO: 06 TO 10, 12-13,
16 to 33, 35 to 38, 41 - 51

unit plan



Ground Floor Plan



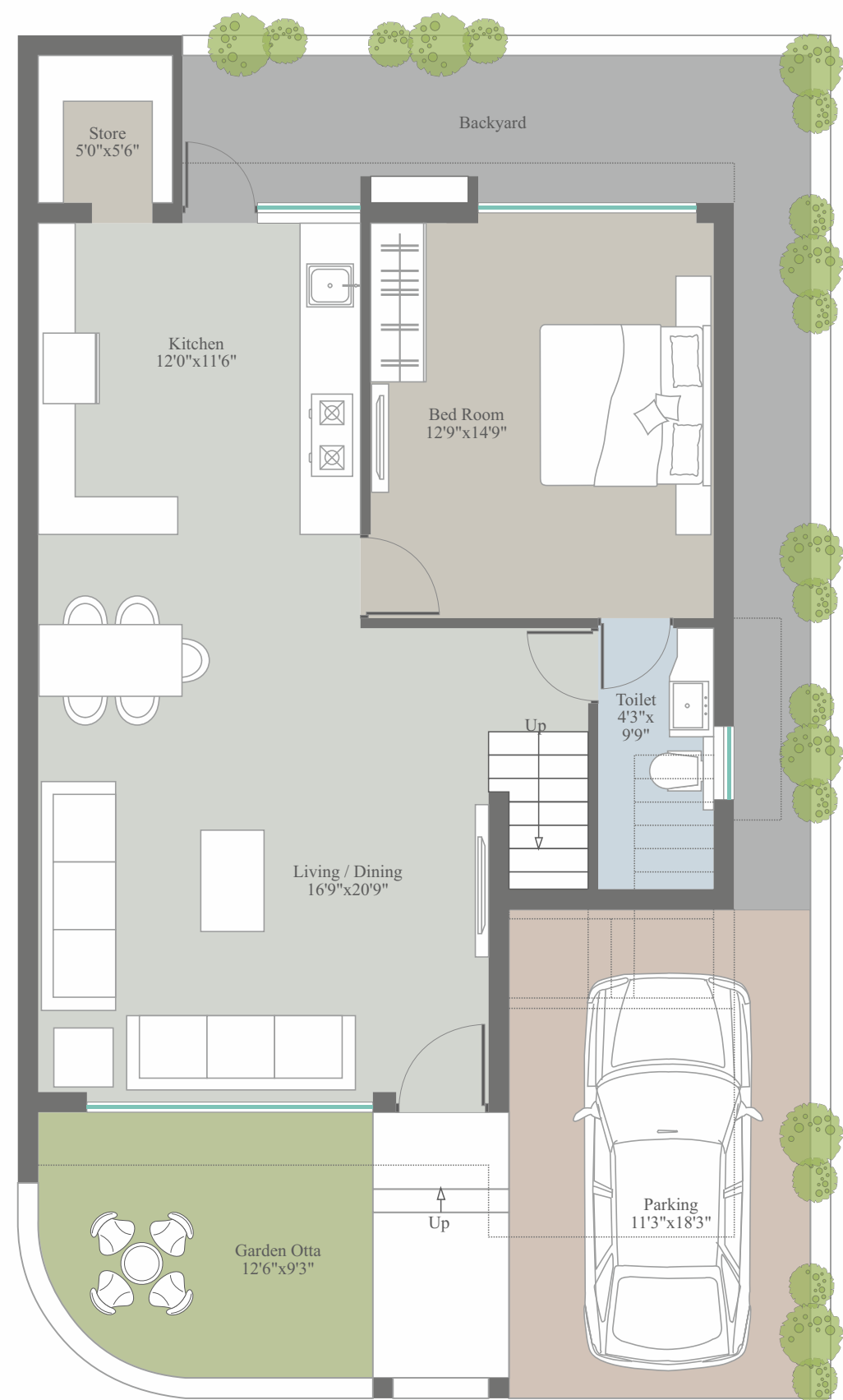
First Floor Plan



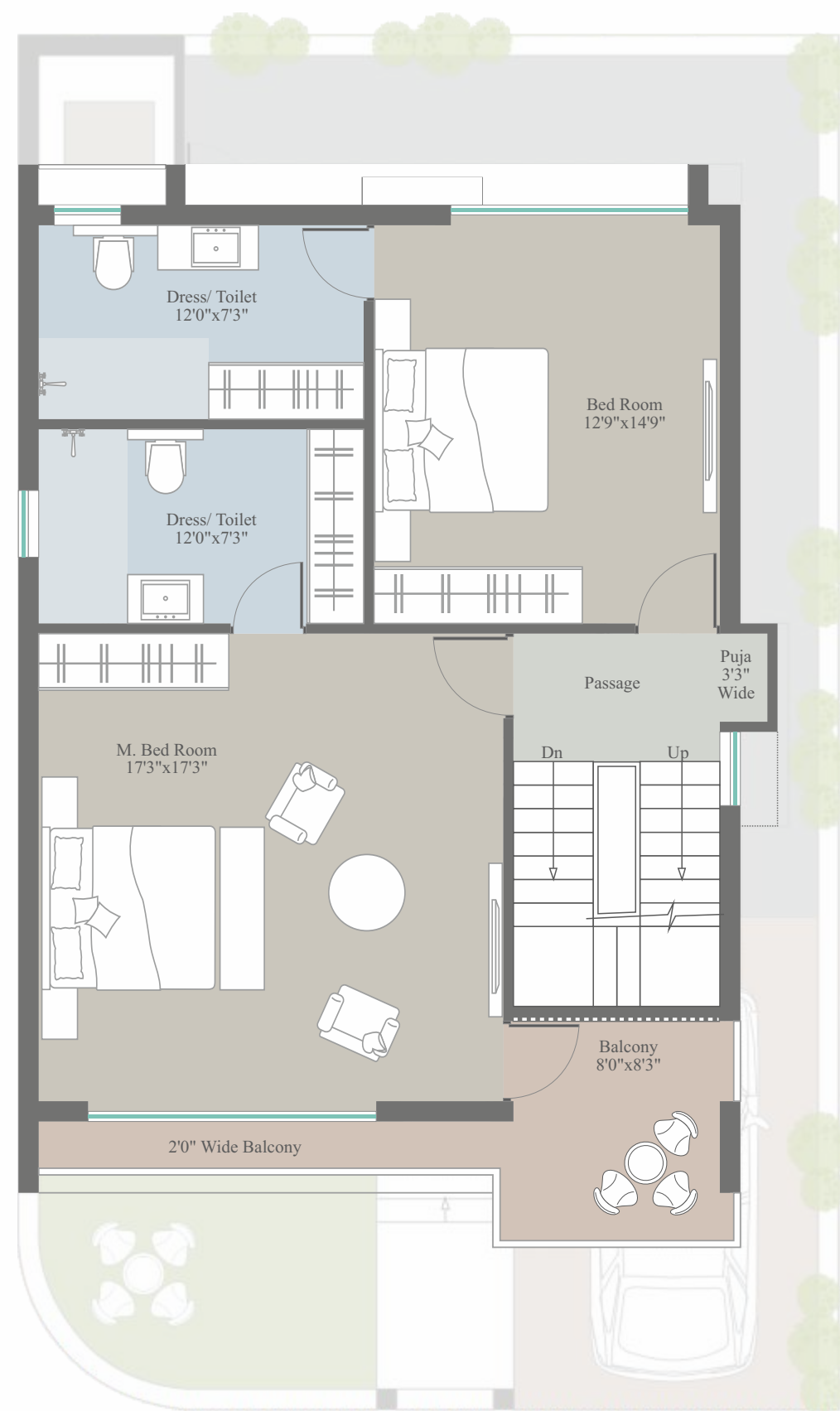
Second Floor Plan

TYPE - B
PLOT NO: 11

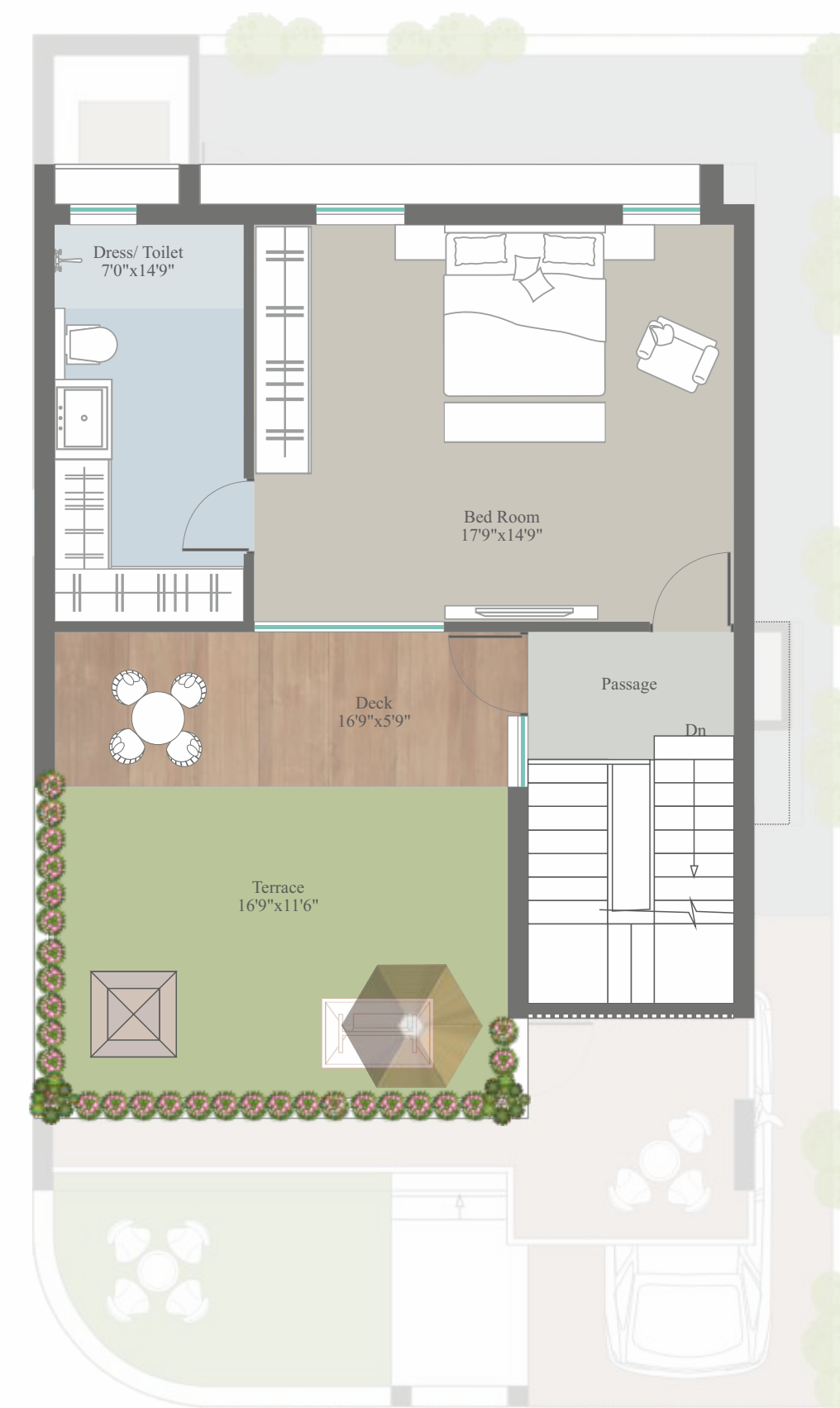
unit plan



Ground Floor Plan



First Floor Plan

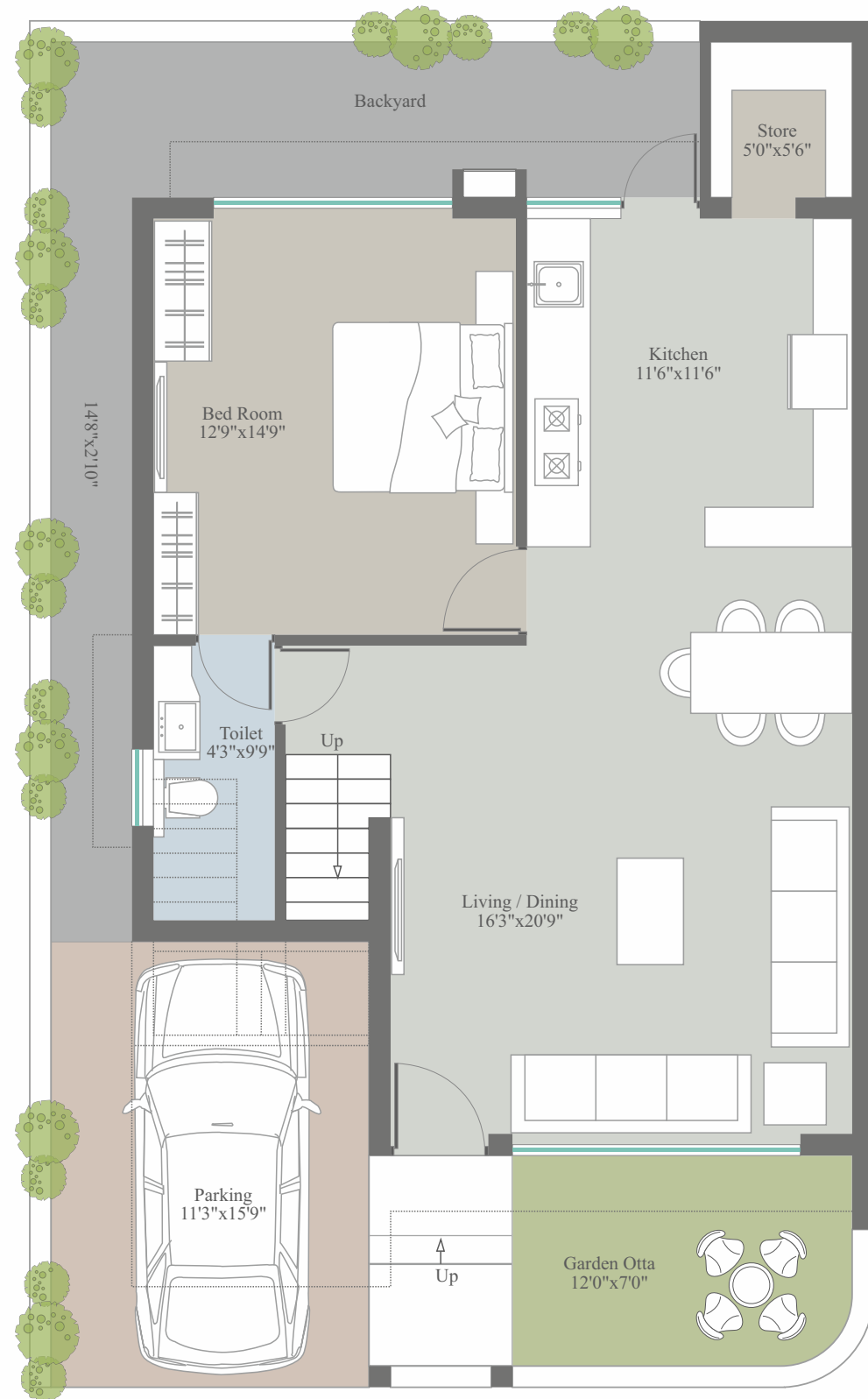


Second Floor Plan

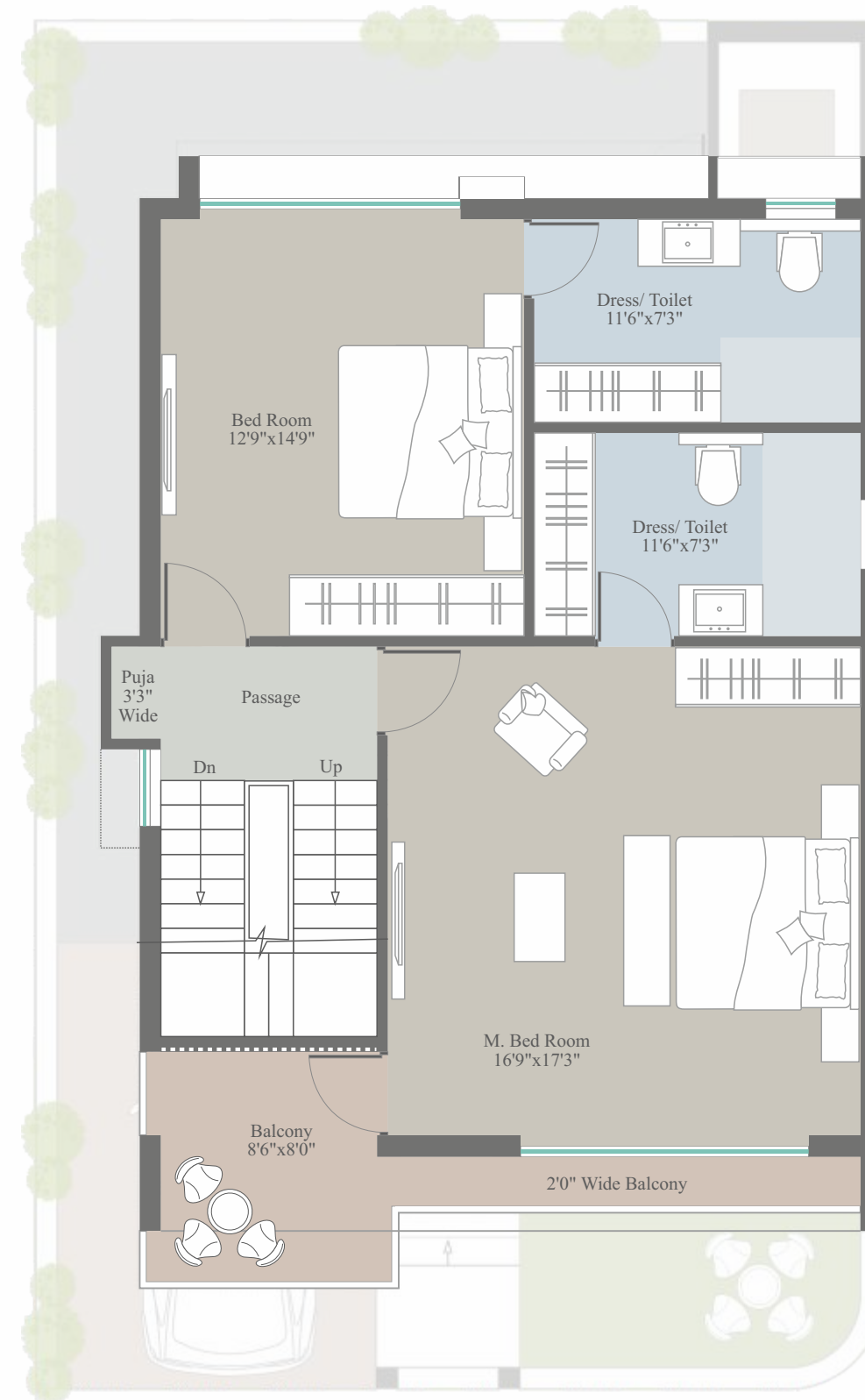
TYPE - C

PLOT NO: 15 - 34 - 40

unit plan



Ground Floor Plan



First Floor Plan

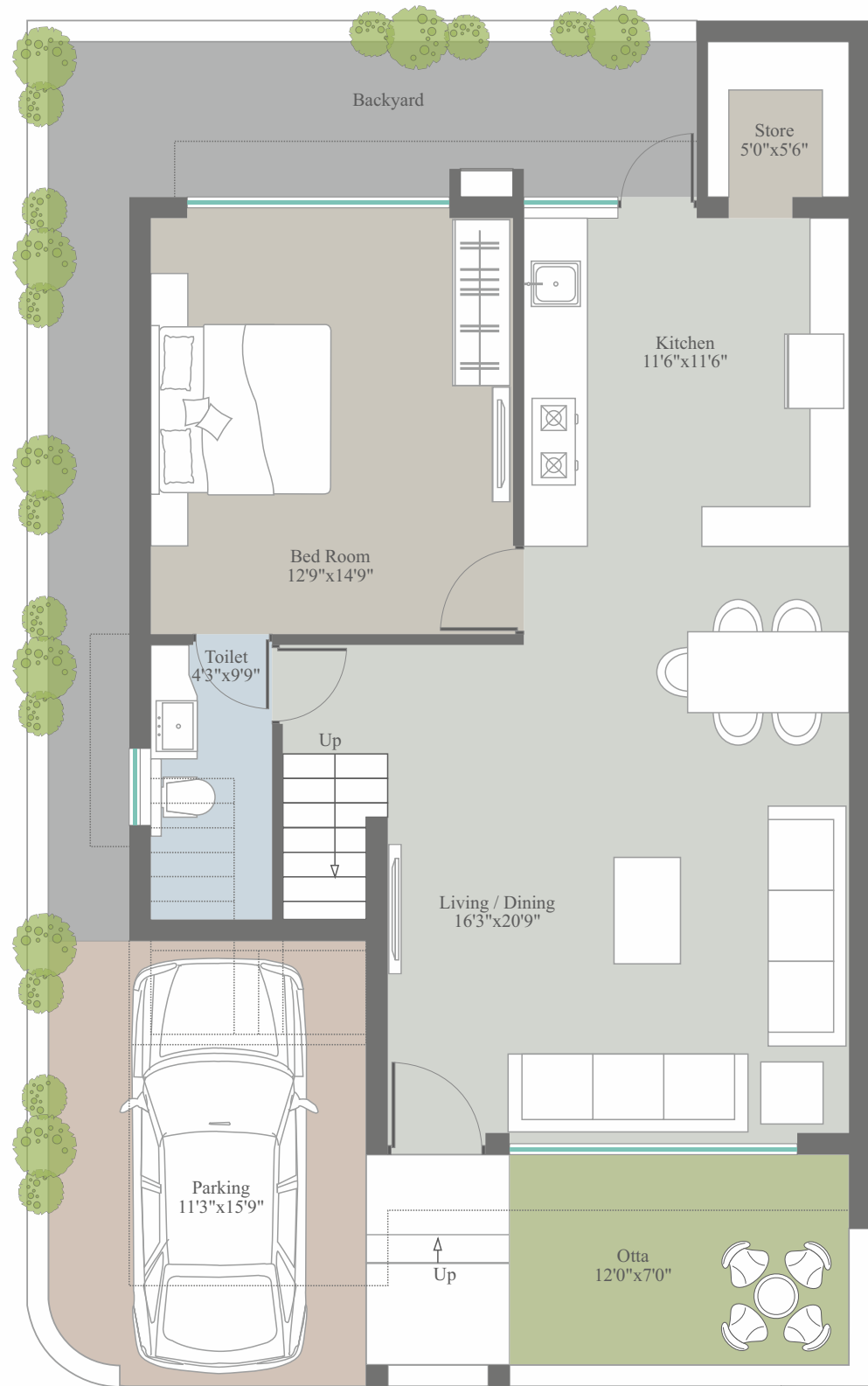


Second Floor Plan

TYPE - D

PLOT NO: 14 - 20 - 39

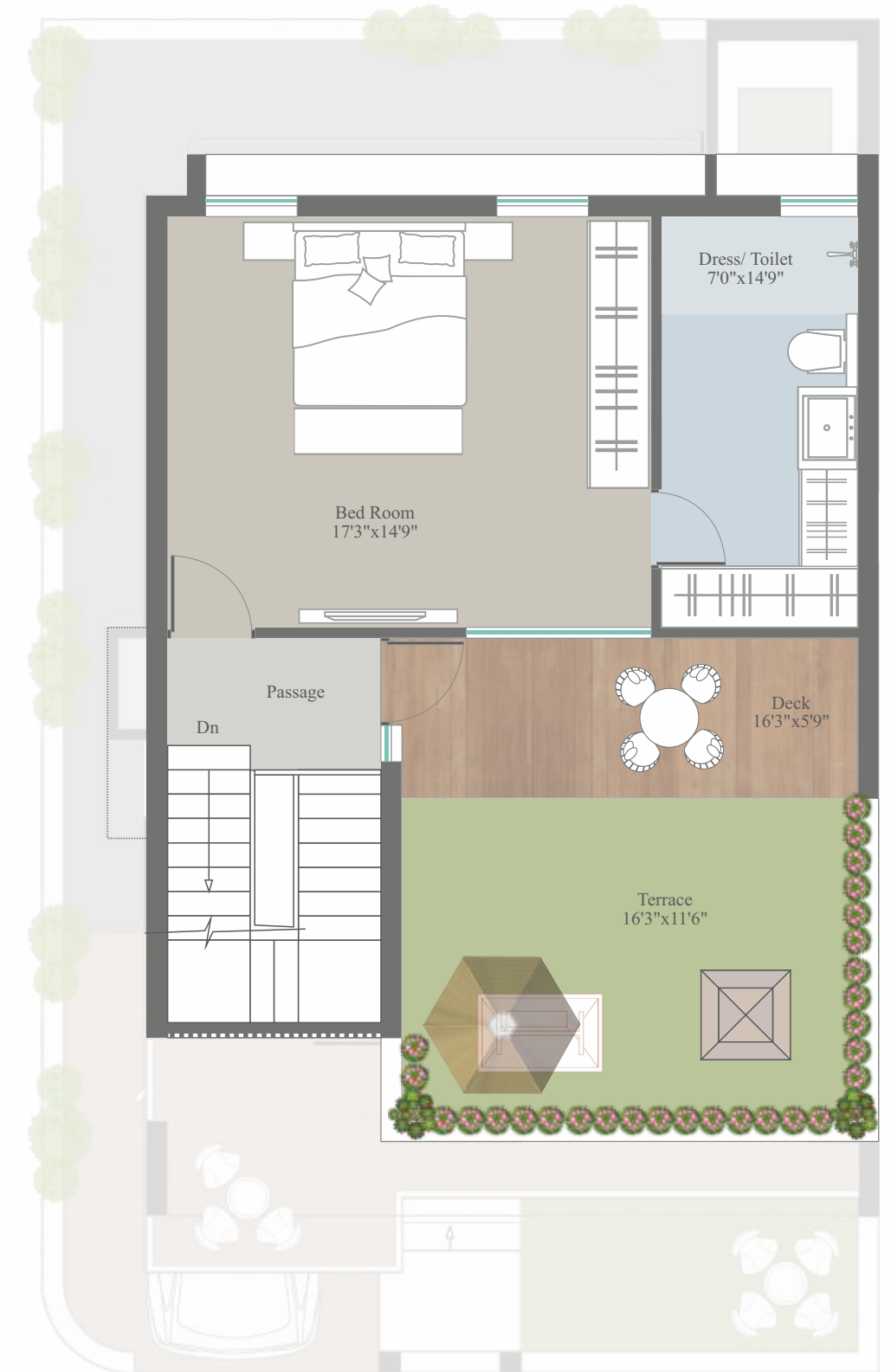
unit plan



Ground Floor Plan



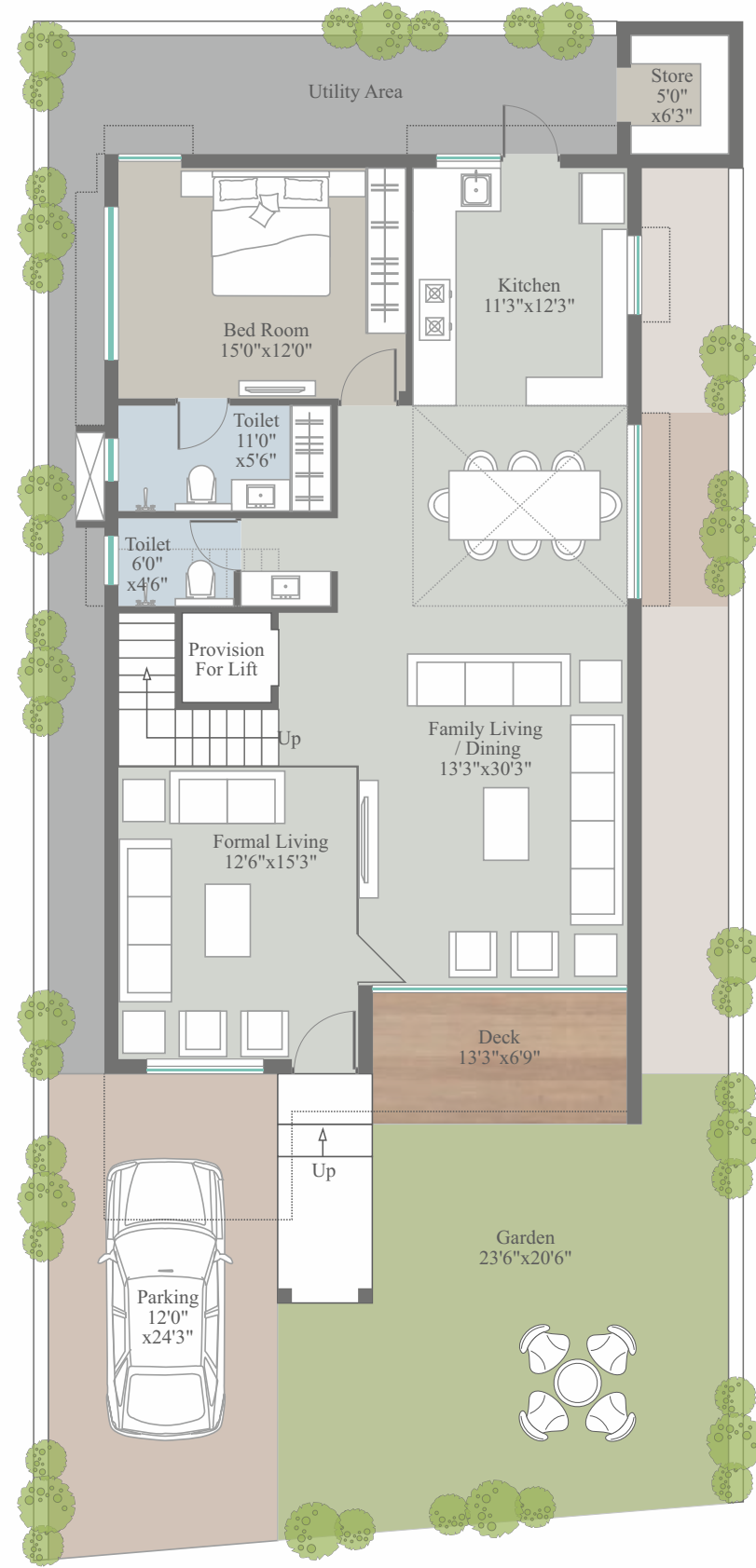
First Floor Plan



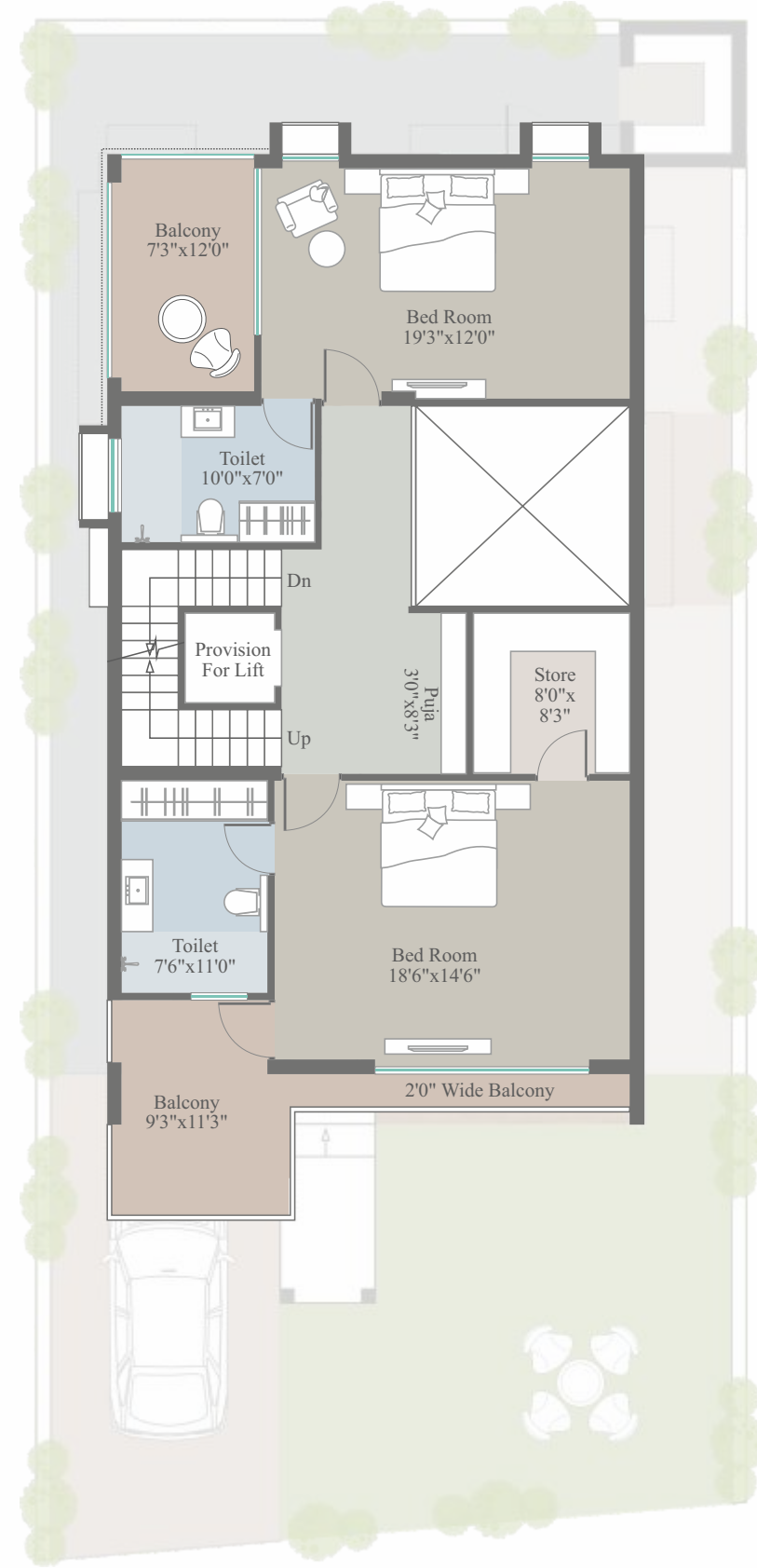
Second Floor Plan

TYPE - E
PLOT NO: 01 - 02

unit plan



Ground Floor Plan



First Floor Plan



Second Floor Plan

TYPE - F
PLOT NO: 03 - 04

unit plan



Ground Floor Plan



First Floor Plan



Second Floor Plan

unit plan



Ground Floor Plan



First Floor Plan



Second Floor Plan

TYPE - G
PLOT NO: 05

prologue

The forever charm of first impressions

The story begins here at the portico where space breathes and greens greet. The open porch flows into a landscaped sit-out, a green corner that's both arrival and retreat. A place where morning light brushes the floor tiles and evenings pause over quiet conversations. The car park blends into this serene foreground, designed for elegance. The calm symmetry of every detail creates a first impression that lingers long after you've stepped inside.





prelude

The beginning of distinction

Here, the first glance speaks of what follows. This is an address where refinement precedes experience, and elegance introduces itself long before the host does. The facades frame stature, the contours define calm, and every step across the threshold feels like a transition from the ordinary to the exceptional. Balconies stretch like quiet extensions of thought, inviting the sky to be part of every morning. A glimpse is enough to know that you've arrived at the beginning of something rare.



SPECIFICATION



STRUCTURE

- RCC & Masonary works as per structural engineer's design



FLOORING

- Vitrified Tiles Flooring in All Rooms
- High Quality Parking Tiles in Parking Area



DOOR / WINDOWS

- Elegant wooden entrance main door
- Internal laminated flush doors with wooden frames
- High Quality Aluminium Section fully glazed windows



BATHROOMS / TOILETS

- Designer bathrooms with premium tiles
- Granite/stone counters for basins
- C.P fittings And Vessels of Branded Make.



WALLS / PAINTS FINISHES

- Inside Mala finished plaster with putty and primer.
- Outside double coat plaster with exterior paint



TERRACE

- Brick bat water proofing with China mosaic on terraces.



KITCHEN

- Granite Kitchen Platform with stainless steel sink.
- Ceramic tiles over platform.
- Wash area with ceramic tiles dado and natural stone flooring.



ELECTRICAL

- Concealed copper FR grade wiring of approved quality.
- Good quality I.S.I Modular switches.
- Provision for TV and Internet points at convenient locations.
- Sufficient electrical points as per architect's plan

essence

Perfection in details



Aesthetics



Where art, light, and luxury align

Light moves like a brushstroke across quiet walls, shaping moods more than shadows. Textures speak softly: of wood, warmth, and the hush of marble. Every finish breathes intention; the artistically designed interiors turn stillness into an experience. Here, beauty is hard to ignore. It tugs you softly. It's felt, in the calm, in the curve, in the way every space seems to come alive and whisper.

Value Additions

- Video door phone, for added security
- App based intercom facility between Home & Security Cabin.
- Provision for a Heat pump & a Pressure pump.
- Provision for a Water Softener
- Provision for an EV Charging Point

Forward
thinking
luxury

advanced



Of people, warmth,
and easy joy

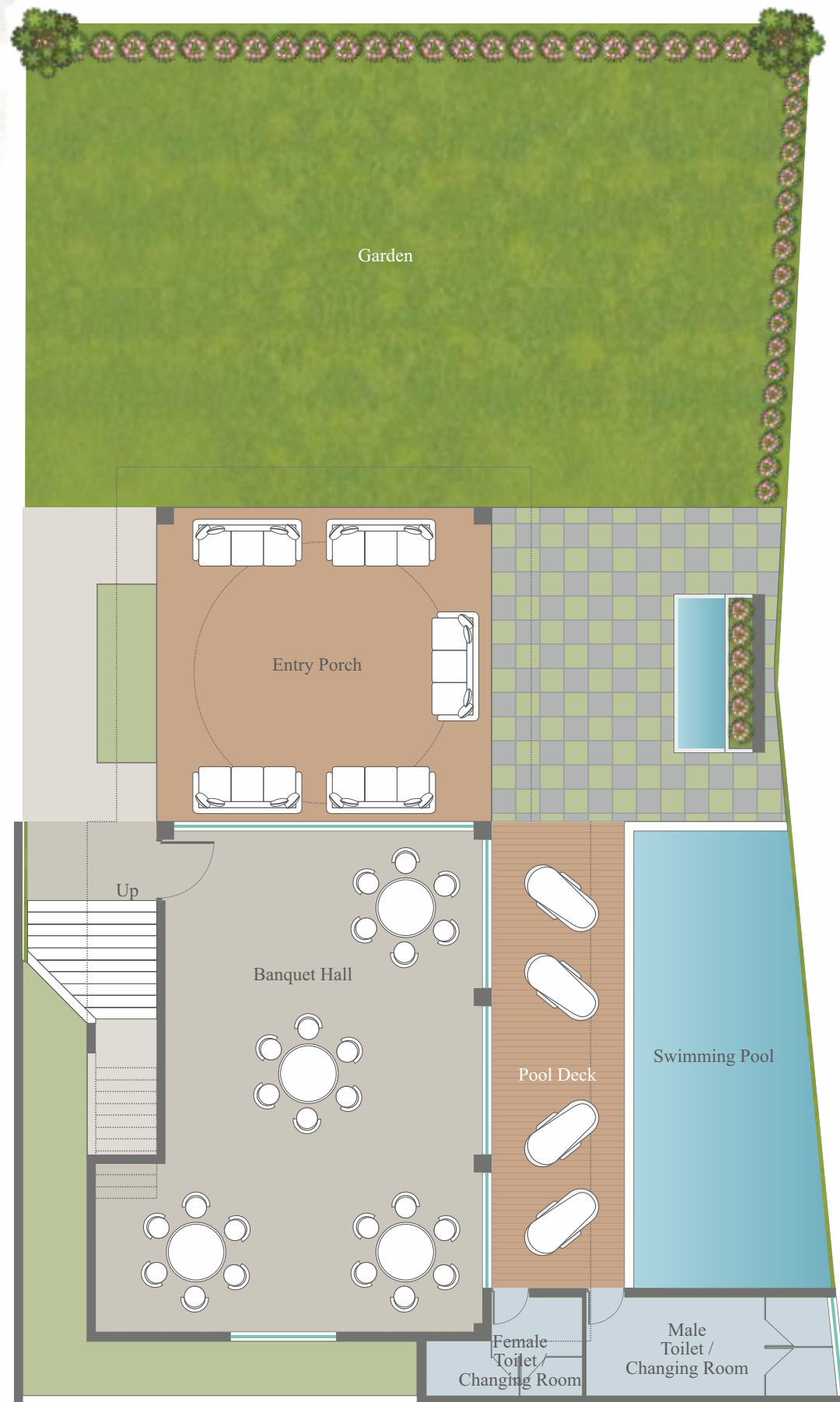
Light filters through leaves, words float between smiles, and belonging feels beautifully ordinary. Here, mornings spill into easy conversations under shaded pergolas. Evenings gather softly around coffee cups, as neighbours turn familiar, and familiar faces turn into friends. The open sit-outs become stories of their own. Of shared laughter, slow evenings, and unhurried living. Every space here has been designed for presence, for the comfort of company, and the charm of connection. At Keystone 51, togetherness unfolds in the warmth of a greeting, in a passing exchange, in the quiet assurance that you belong here.

presence

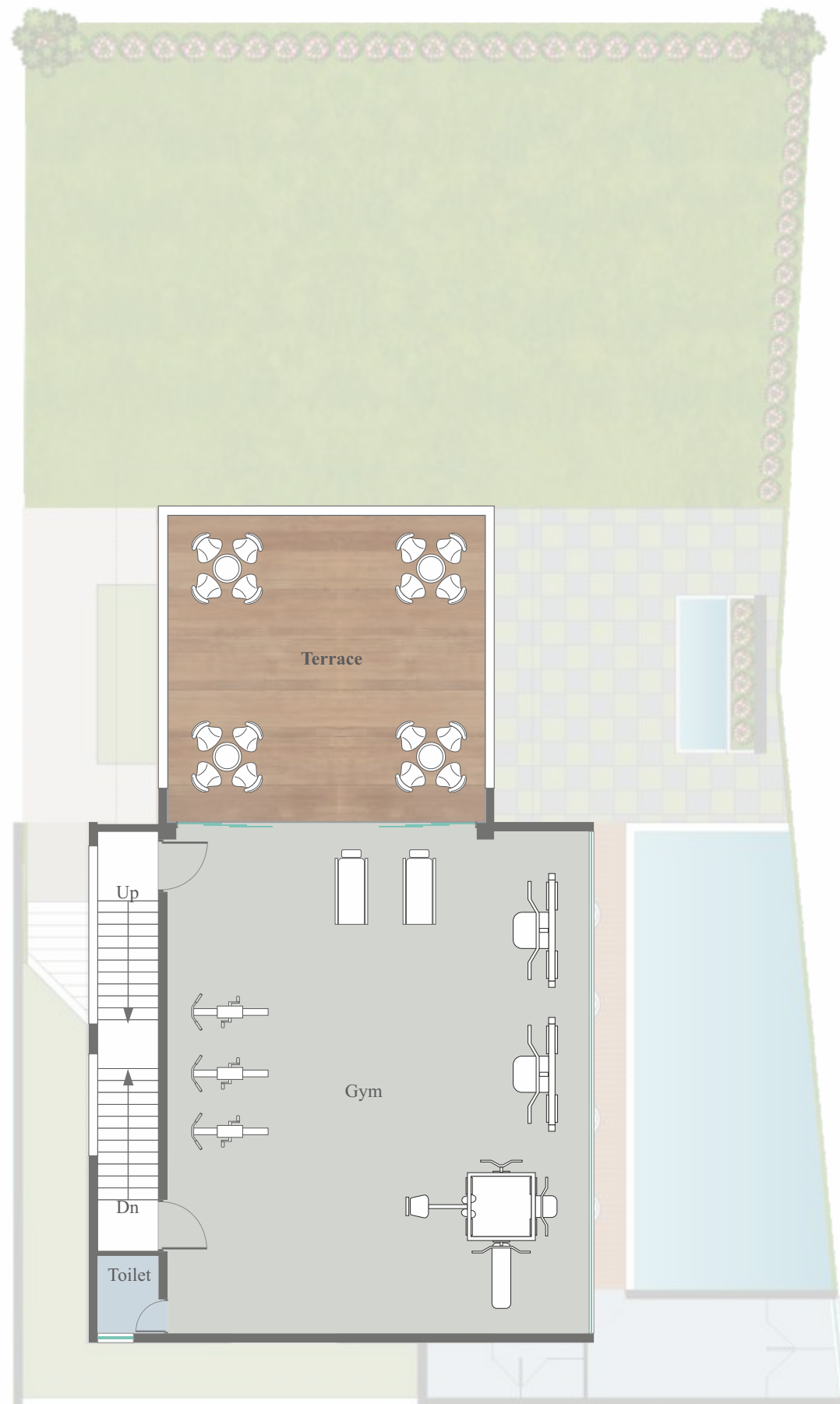




clubhouse



Ground Floor Plan



First Floor Plan

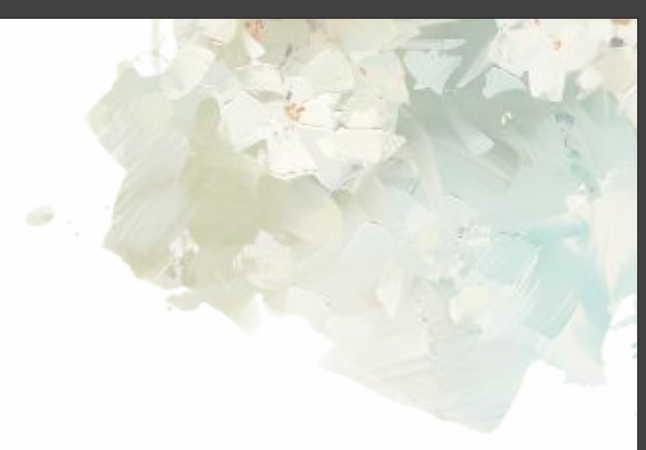


Second Floor Plan



enrichment

Reflections of living well
There's a rhythm to stillness and here, it moves like water. A pool that mirrors not just the sky, but the calm that comes from having arrived. This is where architecture exhales in open decks, serene sit-outs, and tranquil blue. At Keystone 51, luxury finds its fluid form unfolding in experiences that restore and revive. Because true enrichment is certainly all about feeling more in every reflection of living well. The shimmer of sunlight, the echo of laughter, the hush of evenings, all combine to flow into moments that replenish the spirit. Here, leisure becomes art, and calm becomes a choice.



Garden

- Children Play Area
- Gymnasium
- Banquet Hall
- Swimming Pool
- Terrace/ Garden Sitting



amenities



Lifestyle Infrastructure

- Entrance Gate with Security Cabin
- CCTV cameras for common areas
- R.C.C / Paver internal Roads
- Designer Street Lights
- Rain Water Harvesting System





DEVELOPER
BENCHMARK PROPERTIES

SITE: **KEYSTONE 51**
Near Navrachna University,
Off 75 Meter Ring Road,
Bhayli TP 24B, Vadodara - 391410

Ph: +91 87 9164 9164
E: keystone51@vihav.com
W: www.vihav.com

ARCHITECT
Placekinesis Associates
(Ar Bhaskar Narula)

STRUCTURE:
ASHOK SHAH & ASSOCIATES
CONSULTING ENGINEERS

3D DESIGN
LUCID
THE ARTISTRY
www.lucidtheartistry.com

PLUMBING
VRAJ SANITATION

ELE
BINDU BHATT AND ASSOCIATES

BROCHURE DESIGN
ZURICH
GRAPHICS
www.zurichgraphics.com

PAYMENT SCHEDULE:

- 10% on Booking
- 20% within 30 days of Booking
- 20% at Plinth Level
- 15% at GF Slab
- 15% at FF Slab
- 05% at Plaster Level
- 05% at Flooring Level
- 05% at Finishing
- 05% at Possession

DISCLAIMER:

The following will be charged extra in advance / as per Government norms (a) Stamp duty and registration charges. (b) GST (actual) or any such additional taxes if applicable in future. If any new taxes applicable by Central or State Government in future it will be borne by the customer. Premium quality materials or equivalent branded products shall be used for all construction work. Right of any changes in dimensions, design & specifications will be reserved with the developer, which shall be binding for all members. External changes are strictly not allowed. Mgvcl meter deposit should be levied separate. Each member needs to pay maintenance deposits separately. In case of booking cancellation, amount will be Refunded from the booking of same premises and minimum of rupees 25,000/- will be deducted from the booking amount. Possession will be given after one month of all settlement of account. Extra work at the cost of client with prior estimate needs to be given in advance but no change in elevation and plan will be done. The developer reserve the full right to make any changes. This brochure does not form a part of agreement or any legal document, It is easy display of project only. Right of any changes in dimensions, design and Layout, specifications, elevation will be reserved with the developers. In case of delay in water supply, light connection, drainage work by authority, developers will not be responsible. Continuous default in payment lead to cancellation of property Development Charges Extra.

Scan QR Code
Location



Web



Brochure

