



AARAMBH

UPGRADE YOUR LIFESTYLE

3 BHK

HOMES IN YOUR BUDGET



SINGLE
TOWER CAMPUS



ONLY 96
ELITE FAMILIES



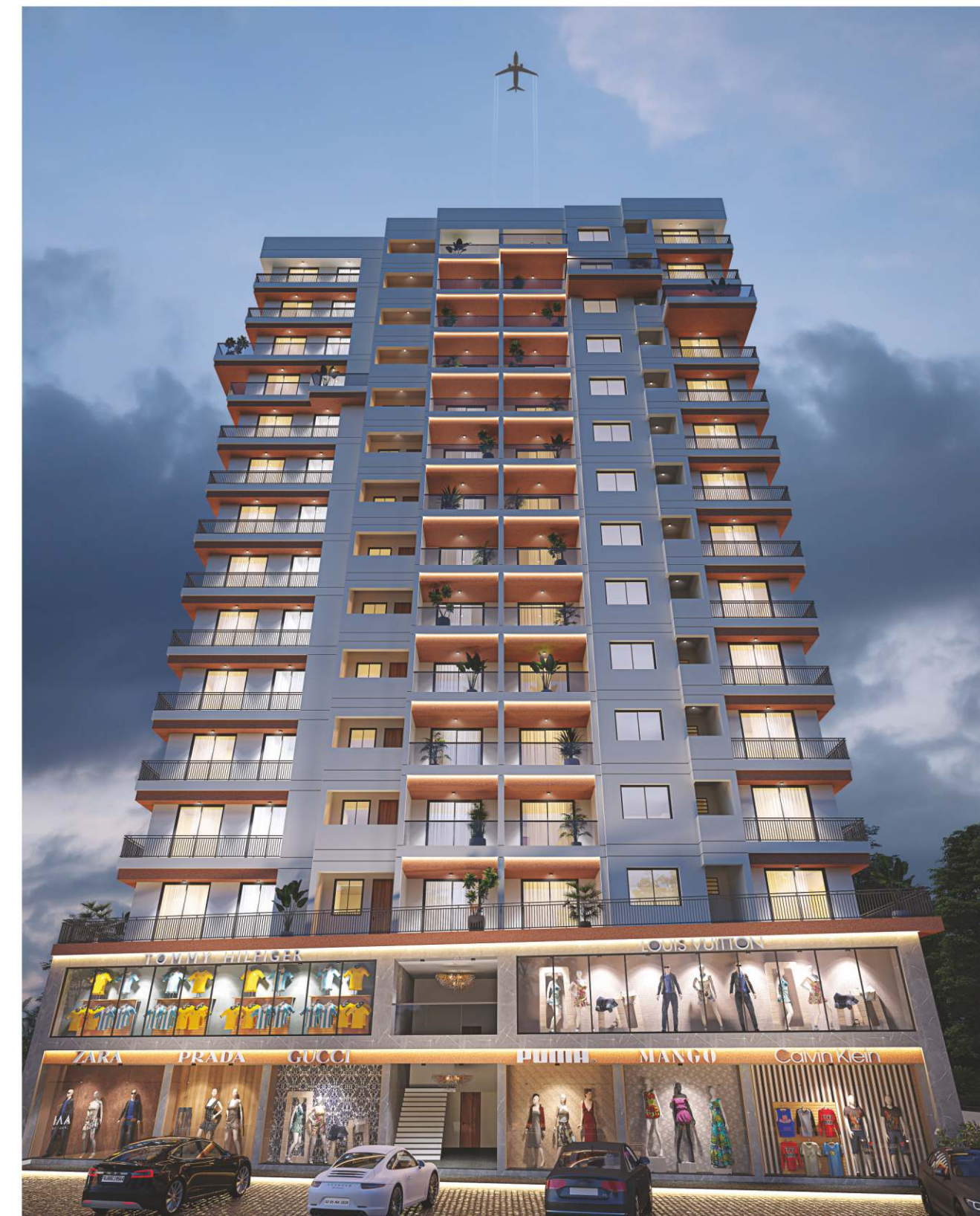
14 STOREY
HIGH END RESIDENCES



SUPER DECK
BALCONY EACH FLATS

WHERE YOUR RESIDENCE AT **THE HEART OF THE CITY**

A location that connects you to everything that is important in life. There isn't a better address than this.





AMENITIES & CAMPUS FACILITY

 Lush Green Landscaped Garden	 Children Play Area	 Gazebo Sitting Area	 Senior Citizen Sitting
 Indoor Games Area	 Indoor Gym Area	 Lavish Entrance Foyer	 2 Premium Quality Auto Door Lift.
 Foyer Waiting Area.	 Entrance Gate With Security Cabin	 24X7 CCTV Camera	 2 Level Parking Space
 Allotted Car Parking	 Fire Safety for Campus	 Rooftop Solar For Common Use.	 Generator Backup For Common Areas.



WHERE YOUR BLISSFUL LIFE EVERY DAY

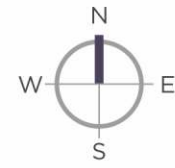
Listen to nature tell her tale, feel fresh breeze smoothly sail.
Take a moment to inhale, let the fragrances just trail.
Embrace the exotic greens all around you.

GROUND
LAYOUT FLOOR PLAN



A-WING

TYPICAL FLOOR PLAN



1ST TO 14TH FLOOR

A SPACIOUS LIVING

Your home is a masterpiece with premium quality flooring, French windows, panoramic views and inimitable, iconoclastic style. Enjoy all the comforts that life has to offer; everything is created to help you live grand.

B-WING

TYPICAL FLOOR PLAN



A-WING
UNIT-102

3 BHK ISOMETRIC VIEW



B-WING
UNIT-102



UNITS SPECIFICATION

Floorings

- Vitrified flooring in living, dining and kitchen area & in all bedrooms.

Kitchen

- Granite kitchen platform with sink of standard make.
- Wall tiles up-to lintel level.

Doors & Windows

- Designer main door with wooden frame.
- Designer laminated internal doors with granite frame.
- Standard quality of door locks and accessories.
- Anodized / Powder coated aluminum section with premium quality reflective glass.

Wash-Utility Area

- Dry space area with tile flooring tile & dado.
- Adequate electrical, plumbing and drainage points.

Toilet/Plumbing

- Good quality tile for flooring & dado up to lintel level with standard quality ware make in all toilets.
- Centralized geyser provision point in wash area.
- CPVC/UPVC piping of astral or equivalent quality.

Electrical

- Sufficient point in concealed copper wiring of standard make.
- ISI approved modular switches of standard make.
- Adequate power back up up to 3 amps in each unit.

Electrics And Power Back-up

- Generator of adequate capacity for common facilitates of the society campus.
- Light fitting of standard make in common passages & campus.

Lift

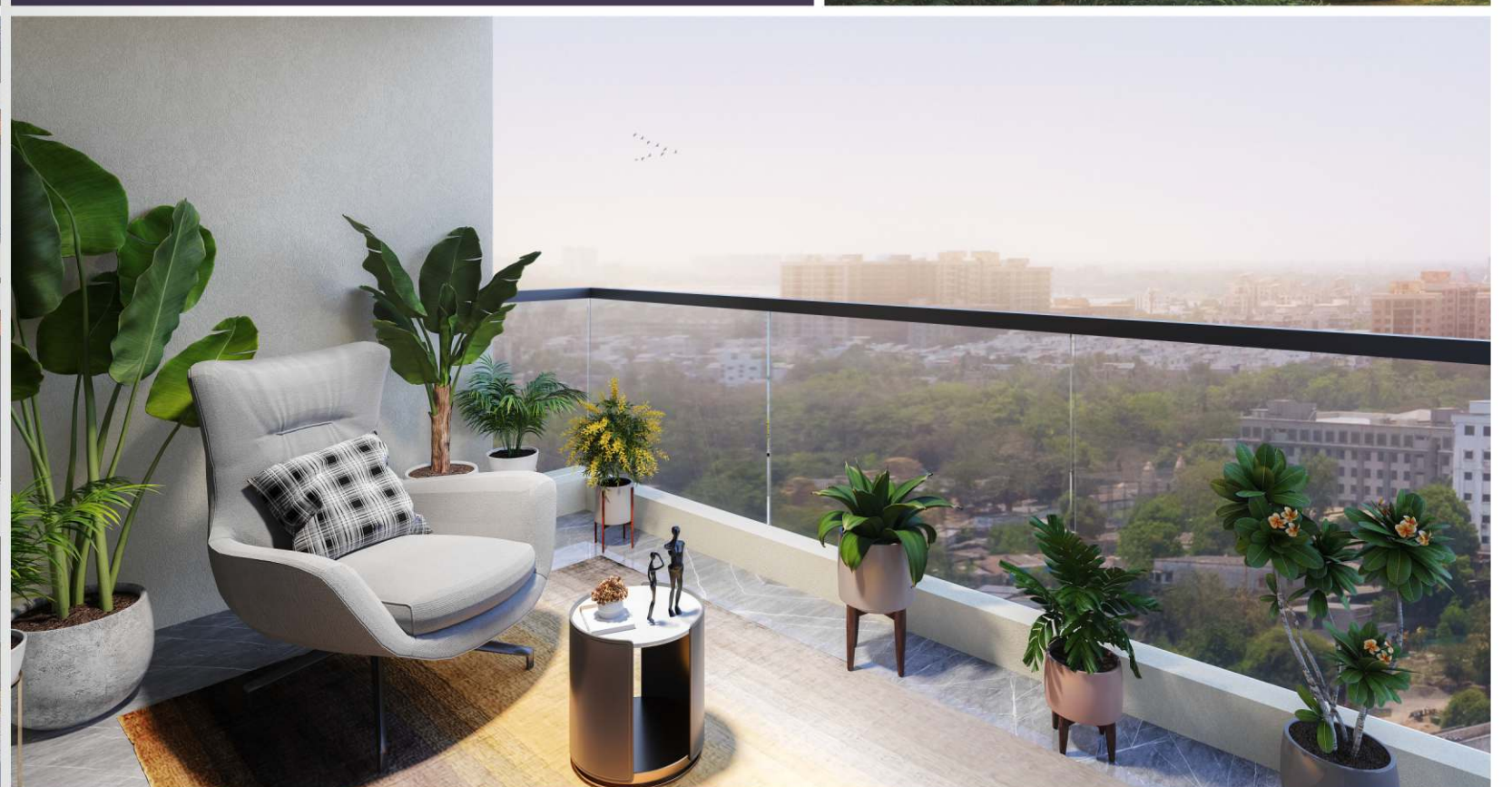
- Automatic Passenger elevators of standard make.

Façade Treatment

- Double coat plaster on external wall with rustic texture.
- Weather shield paint of ISI or standard make.

Internal Wall

- Putty on all plastered wall.





LOCATION MAP

Site Address

Aarambh, F.P. 27/1/2, Ugat Canal Road, Near Raj Harmony, Beside Sagar Sankul, Jahangirabad, Surat-395005.

Contact Details

99099 20499
81415 09595

A Project By :



Architectural & Structural



MEPF Consultant



JV CONSULTANT
MEPF Design and Audit

DESIGNED FOR CONNECTIVITY.

Metro Station
2 min.

D-Mart
5 min.

Ring Road
5 min.

School & Collage
5 min.

ONGC Circle
15 min.

Diamond Bourse
25 min.

TERMS AND CONDITIONS

• All rights reserved by the developer to make any changes in plan, elevation and details which will be binding to all members • Stamp duty, GST, Registration charges, G.E.B & S.M.C charges, Legal charges, Maintenance deposit or any other charges and taxes as when levied by government or any of its body shall be borne by purchaser/buyer/legal possession holder • Irregular payment shall lead to cancellation of booking • Installation of A.C units will be permitted at the designated spots and nowhere else • Changes which affects the elevation and structure would not be permitted • Any internal changes would not be permitted without permission of developer • Variation in colour, design, size of material used in this project may occur and can be changed without prior notice • This brochure is just for easy presentation of project and should not be treated as legal documents.