

## SPECIFICATIONS

### Structure

R.C.C. framed structure as per design & specification of structure consultant.

### Door

Wooden chowkhat flush door, all door laminated with pilling.

### Window

Fully glazed three track upvc sliding windows with m.s. glass.

### Kitchen

Open kitchen with working platform black granite slab complete.

### Toilet

Fully concealed provision for hot & cold water with branded C.P. fitting & white coloured sanitary ware, 1 Indian pan & 1 wall hanging commode.

### Flooring

Flooring 2' x 2' vitrified tiles in all rooms and balcony anti skit vitrified tiles in kitchen.

### Lift

2 no's eight passenger automatic lift.

### Stair

Marble and stair railing stainless steel.

### Electrical

Concealed copper wiring, modular switches and fittings of reputed brand with adequate power points & all bedroom AC point.

### Internal Wall Finish

All internal wall shall be finished with smooth plaster of paris & primer.

### External Wall Finish

External wall finish with elevation design from weather coat paint (Asian Ultima Paint).

### Generator Set (Silent Type)

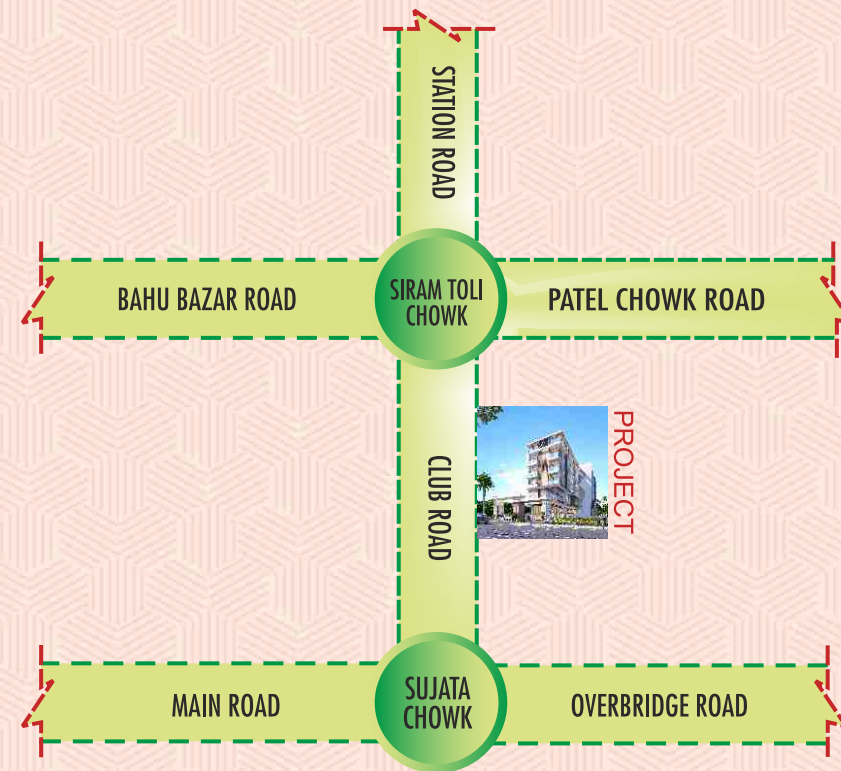
500W power back-up to each flat, 24 hours power supply for lift, water & common amenities.

### CCTV Camera

Common space area coverage with CCTV camera.

Community Hall:

## LOCATION MAP



## PAYMENT SCHEDULE

1.	Booking	-	15%
2.	Basement Floor	-	10%
3.	1 <sup>st</sup> Roof	-	10%
4.	2 <sup>st</sup> Roof	-	10%
5.	3 <sup>st</sup> Roof	-	10%
6.	4 <sup>st</sup> Roof	-	10%
7.	5 <sup>st</sup> Roof	-	10%
8.	Bricks Work	-	10%
9.	Plaster	-	10%
10.	Before Handover	-	05%



### DEVELOPED BY



**DEEPS CONSTRUCTION**  
 Bahu Bazar Road, Opp. Guria Petrol Pump  
 Kanta Toli, Ranchi - 834001  
 Mobile: 97083 77444 / 7970557760  
 70912 75543 / 94701 47760

### ARCHITECT



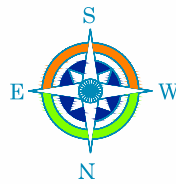
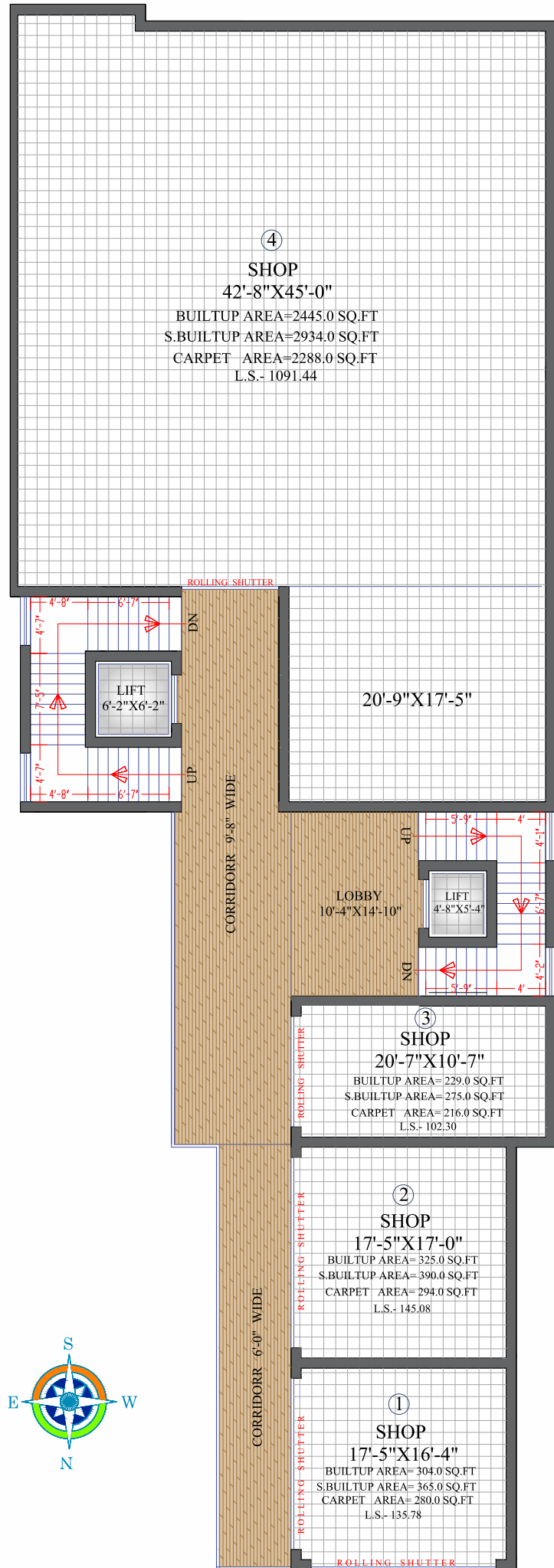
**ENGINEERS GROUP**  
 ARCHITECT, CONSULTANT & INTERIOR DESIGNER  
 Bariatu Road  
 Near HDFC Bank, Bariatu  
 Ranchi - 834009 (Jharkhand)

### DISCLAIMER

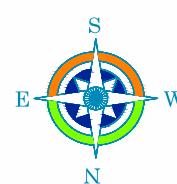
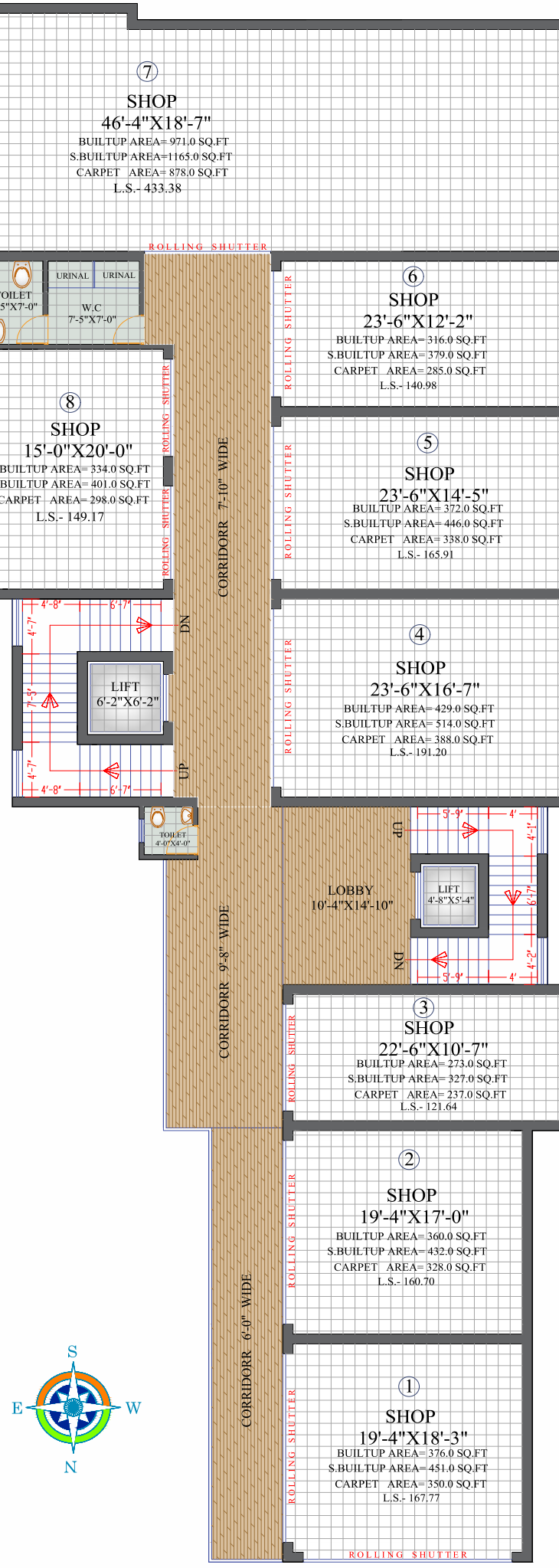
This brochure is purely conceptual and is not a legal offering. The developers/promoters/builders reserve the right to make/ variations and modifications. Floor plans are not as per scale.

**Project at : Beside Angithi Restaurant, Club Road, Ranchi**

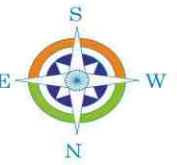
# G+0 TYPICAL FLOOR PLAN



# G+1 TYPICAL FLOOR PLAN



# G+2 TO G+4 TYPICAL FLOOR PLAN



FLAT	S.B. AREA	UNIT
01	1403.0 SQ.FT.	3 BHK
02	1382.0 SQ.FT.	3 BHK
03	1164.0 SQ.FT.	2 BHK
04	1552.0 SQ.FT.	3 BHK