

A PROJECT BY



ANON GIRIRAJ

OWN YOUR OWN DREAM HOME IN MULUND

THAT DEFINES YOUR LIFESTYLE AT YOUR CONVENIENCE



ANON GIRIRAJ

If you are searching for a home with all the amenities and comforts of a luxury apartment then Anon Giriraj in Mulund is the place for you.

Having created iconic Residences, Anon Giriraj is a marvelous example of our commitment to luxury with a Luxurious, " Home Sweet Home" feel where you will feel comfortable to settle in and relax. It is a perfect intersection of everything that one can desire with A culturally rich neighborhood, easy connectivity and enviable lifestyle thoughtfully crafted to offer you a holistic living.

Come own a Home with a world
at your doorstep!!

**THIS ICON OF LIFESTYLE HAS ELEGANT
1BHK , 2BHK & 3BHK RESIDENCES
AND PARKING FACILITY**

ENJOY LUXURY LIVING WITH MODERN AMENITIES

Well Designed Internal Amenities inside your home

Flooring and Finishing

- ▶ Vitrified flooring tiles all over the flat of any branded ISI mark.
- ▶ Granite frame in all windows and internal door frame.
- ▶ Acrylic paints in all rooms of Asian Paints or Nerolac.
- ▶ External paint of building with weather shield or apex or equivalent brand Cement paint of Asian Paints or ICI.
- ▶ Terrace water proofing with extra brick bak koba and Finishing with china chips.
- ▶ Good quality elevator of Schindler / Johnson / Otis or equivalent.
- ▶ Impressive entrance lobby.

Electrical

- ▶ Laminated sheets and folding board of superior quality of Roma/GM or equivalent brand.
- ▶ Electrical fittings with concealed polycab copper wiring either polycab or finolex.
- ▶ Adequate numbers of electrical points in every flat.
- ▶ Two telephone points and two cable points and internet points.
- ▶ CCTV camera in lobby and open space.

Kitchen

- ▶ Kitchen platform of granite and stainless steel sink built in granite.
- ▶ Luster printed tiles up to dado above the platform.

Bathroom and toilet

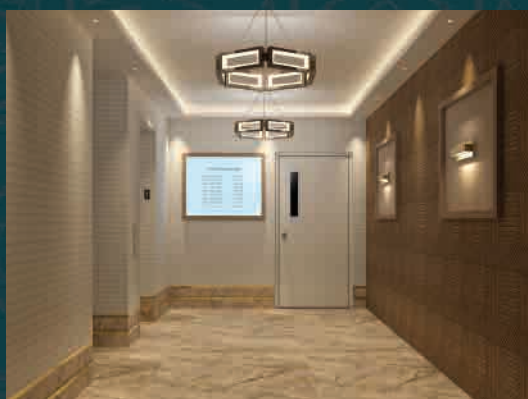
- ▶ Anti skid flooring of ISI mark.
- ▶ Ceramic tiles dado upto door height.
- ▶ Concealed plumbing of Prince or Finolex.
- ▶ Branded sanitary fittings and fixtures with wash basin of Jaguar or equivalent brand.

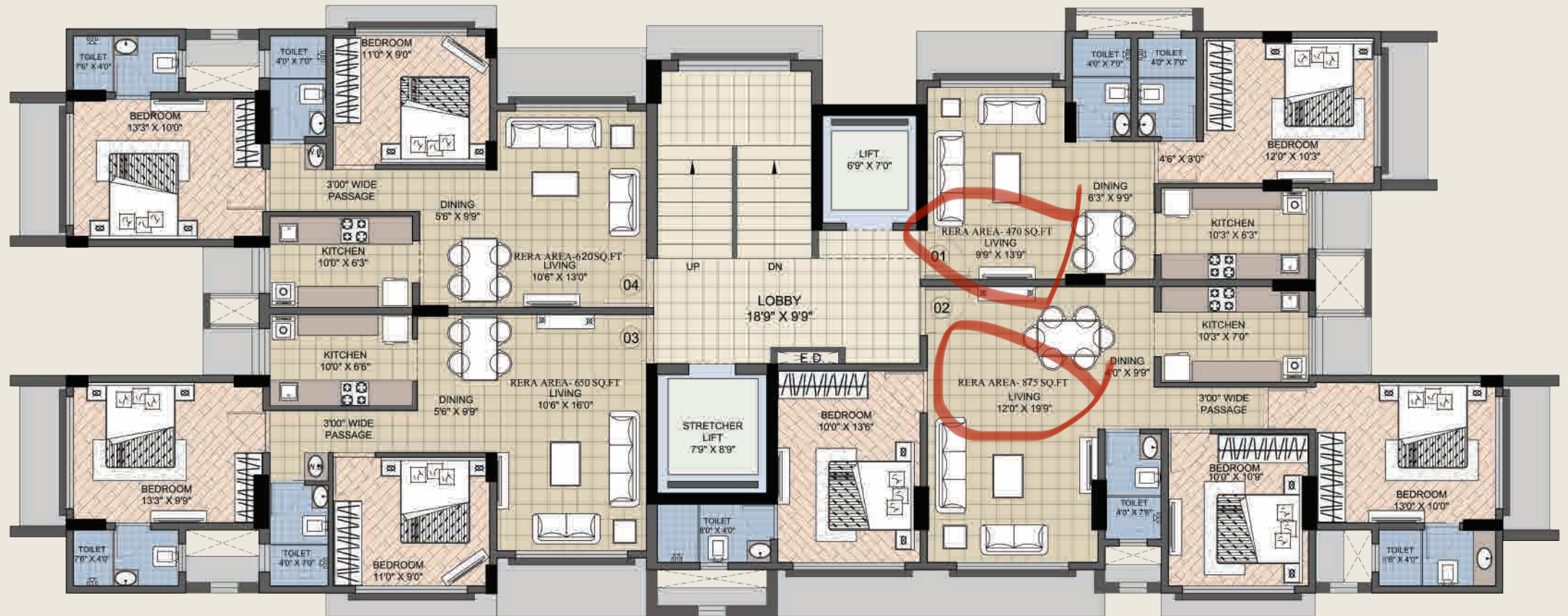
Doors and windows

- ▶ Night latch for main door of Europa or Godrej brand.
- ▶ Moulded Granite frame with bakelite door for W. C. bathroom, other flush doors.
- ▶ Main door both sides Laminates with French polish.
- ▶ Powder coated aluminium sliding window in ¾ section and one way window glass with mosquito net.
- ▶ French Windows.

Well Planned and Convenient External Amenities outside Your home

- ▶ CCTV camera in lobby and open space.
- ▶ Railing in all flats.
- ▶ Fire Extinguishers.
- ▶ Fire fighting extinguishers will be provided on each floor.
- ▶ Society office - Intercom facility in all flats.
- ▶ Security service for 24*7 - 24*7.
- ▶ Power back up for lift and common area.





Typical Floor Plan 1st - 9th Floor





2 BHK - Area 620 sq. ft.



3 BHK - Area is 875 sq.ft.





EVERYTHING YOU NEED IS JUST **WALK AWAY**



100M Distance to Devidayal Garden



2min distance to Upcoming Metro Station



2 Min Walking Distance to Sharon School & Next school



2 Min Walking Distance to Jain Temple



5 Min Walking Distance to Raj Hospital



2 Min Walking Distance to LBS Road which connects you to Thane, BKC and Airport



10 Min Walking Distance to Mulund Railway Station



5 min Walking Distance to Kalidas Natya Mandir

COMPLETED PROJECTS

NEAR COMPLETION PROJECT



ANON SHREEGANESH PRASAD CHS
[RHB ROAD, MULUND W]



ANON AVENUE
[DR. R.P ROAD, MULUND W]



ANON SAPPHIRE
[V.P ROAD, MULUND W]

ONGOING PROJECT

UPCOMING PROJECT



OM SHANKAR BHAVAN
[SANT TUKARAM MARG, MULUND E]



MULUND JALARAM SOCIETY
[M.G ROAD, MULUND W]

**DESIGN ARCHITECT : ALFT
ARCHITECT : R. P ASUNDARIA**

**STRUCTURAL ENGINEER : PRASHANT SANE
LEGAL CONSULTANT : SAMEER K VAIDYA**

MAHA RERA REG. NO. : XXXXXXXX



+91 86 89 80 90 80
+91 96 19 80 90 80



anon.developers@yahoo.com

SITE ADDRESS

ANON GIRIRAJ B P CROSS ROAD NO 2 & 3, OFF DEVIDAYAL ROAD, MULUND WEST, MUMBAI 400080

CORPORATE ADDRESS

102, SHREE GANESH PRASAD, OPP. SVC BANK, RHB ROAD, MULUND WEST, MUMBAI 400080

*Disclaimer: This brochure is merely conceptual and the images/renderers herein are for representation purpose only. This is not a legal document and it cannot be treated as a part of final purchase agreement. All dimensions are approximate and subject to construction variances. The developer reserves sole rights to amend architectural specifications during development stages.