

# NEELKANTH HEIGHTS

— 2 & 3 BHK EXCLUSIVE APARTMENTS & SHOPS —

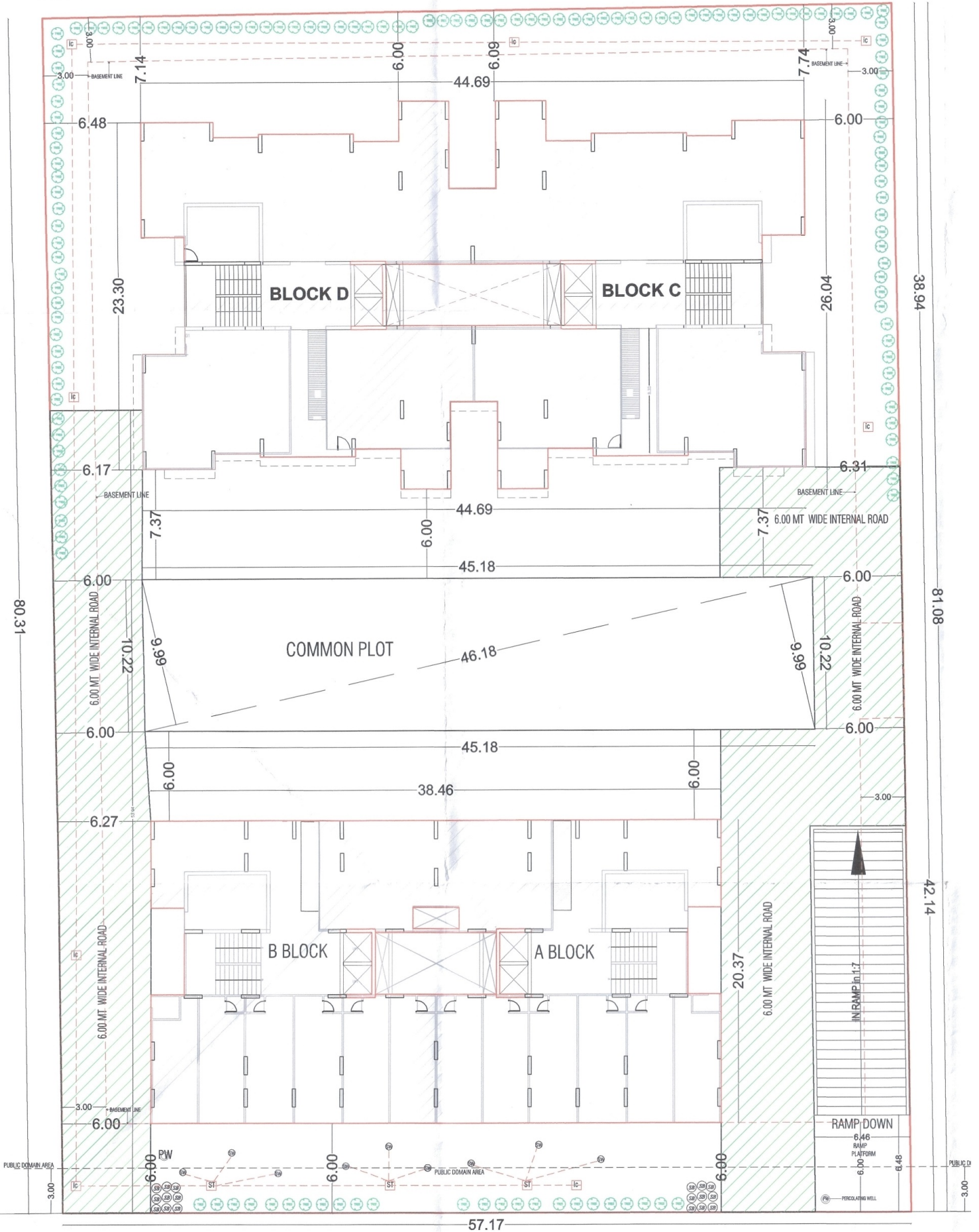
**NEELKANTH  
HEIGHTS**



**NEELKANTH  
HEIGHTS**



57.17

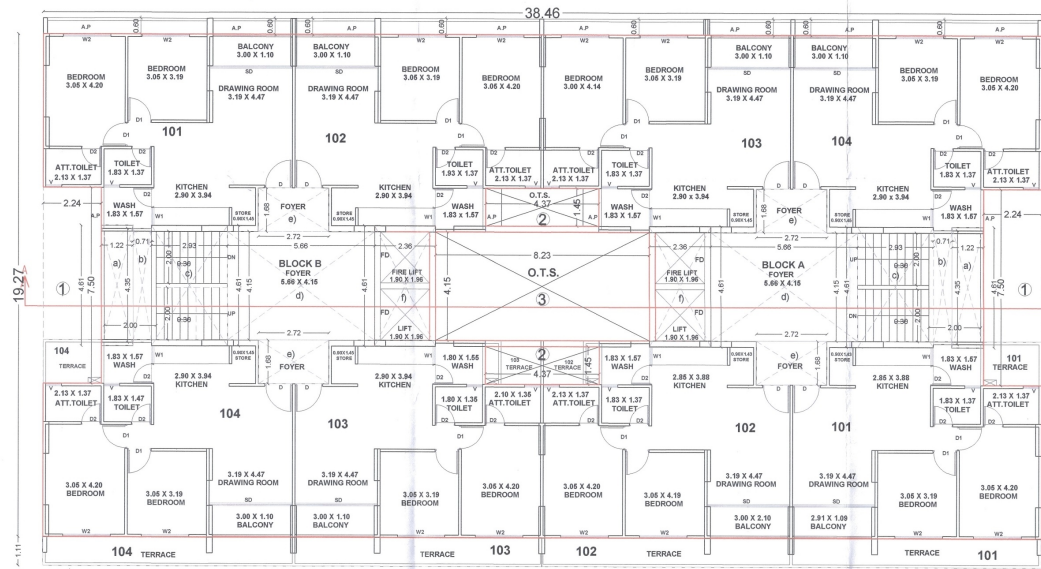


18.00 MT WIDE TP ROAD

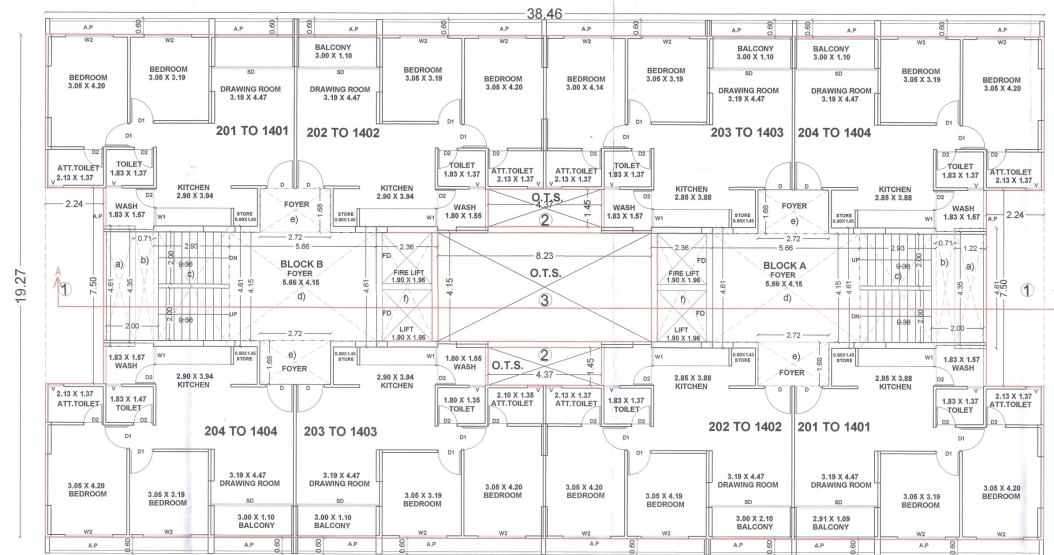
LAYOUT PLAN

SCALE :- 1Cm = 2.00 Meter



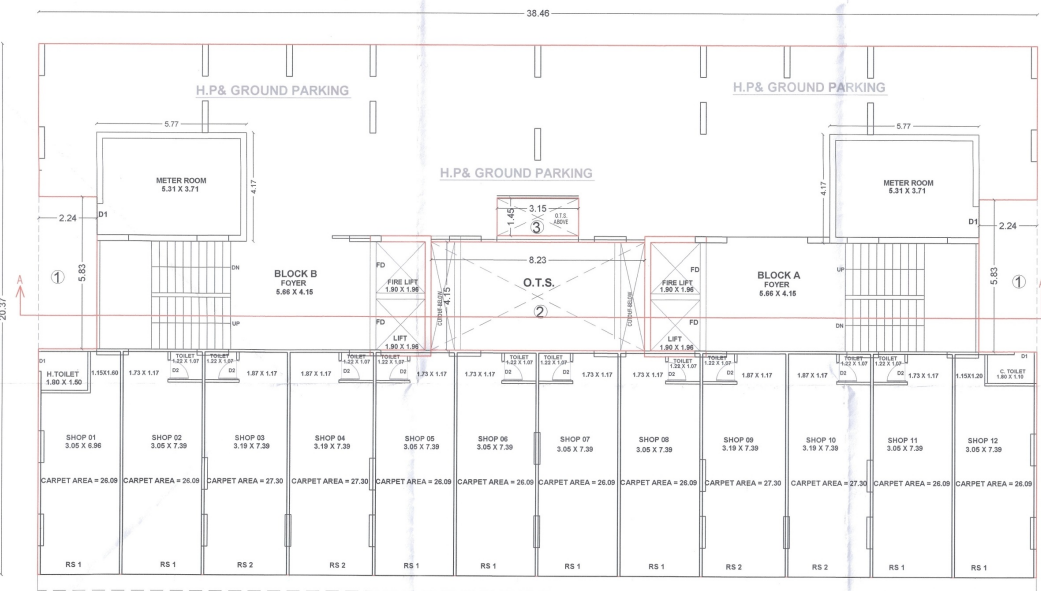


FIRST FLOOR PLAN

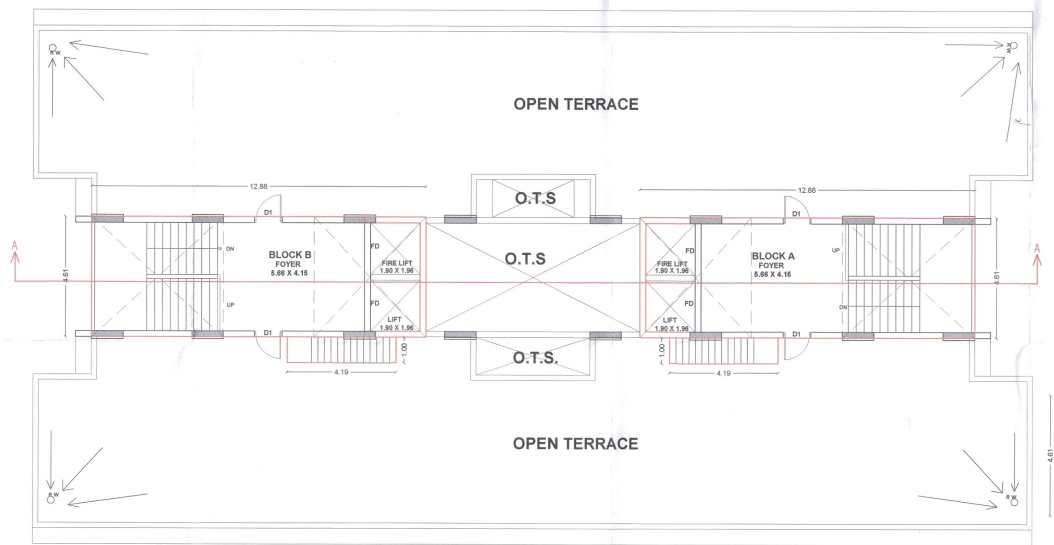


TYPICAL FLOOR PLAN

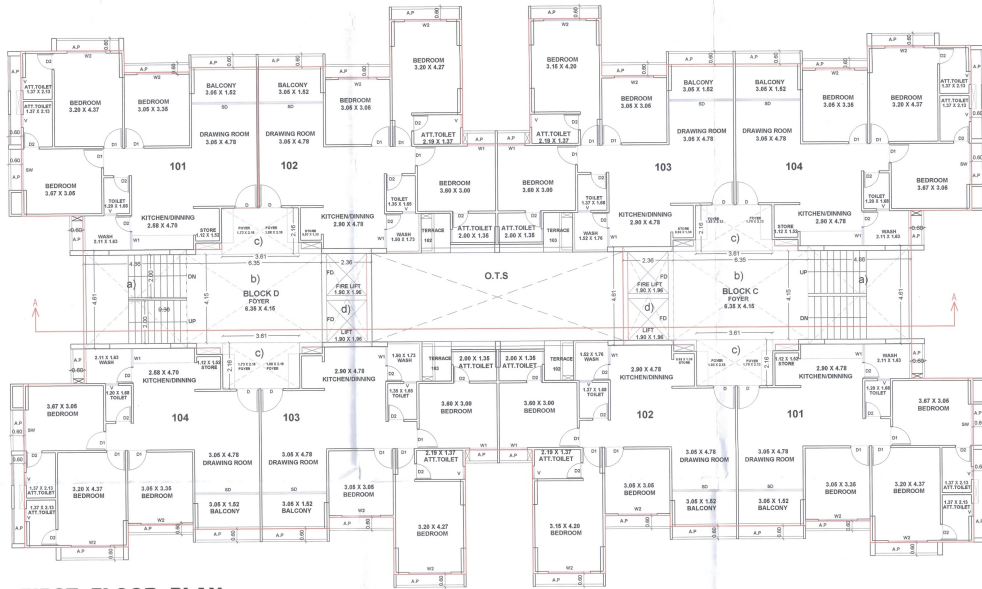
(2ND FL,3rd FL,4th FL,5th FL,6th FL,7th,8th,9th,10th,11th,12th,13th,14th)



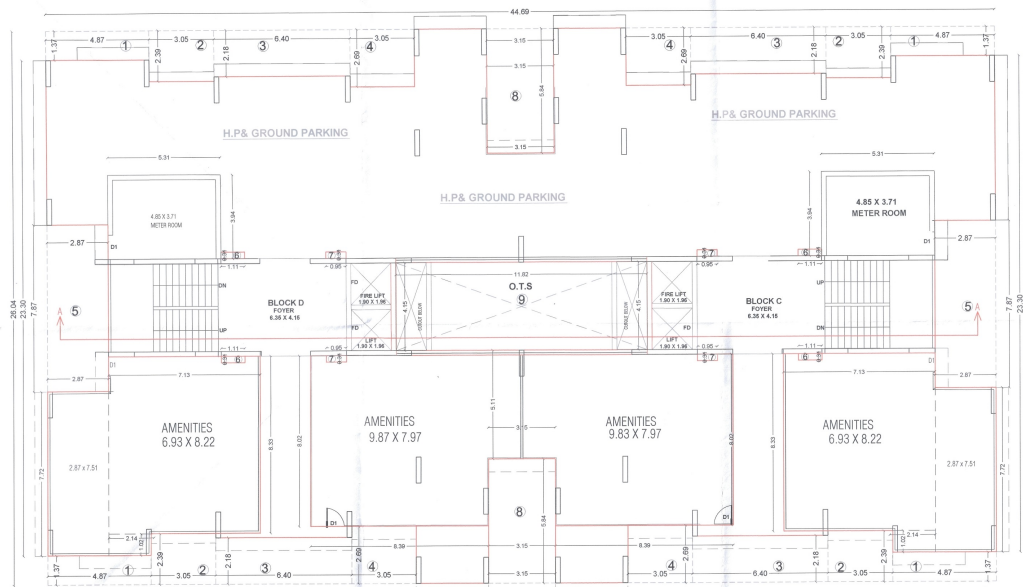
GROUND FLOOR / HOLLOW PLINTH PLAN



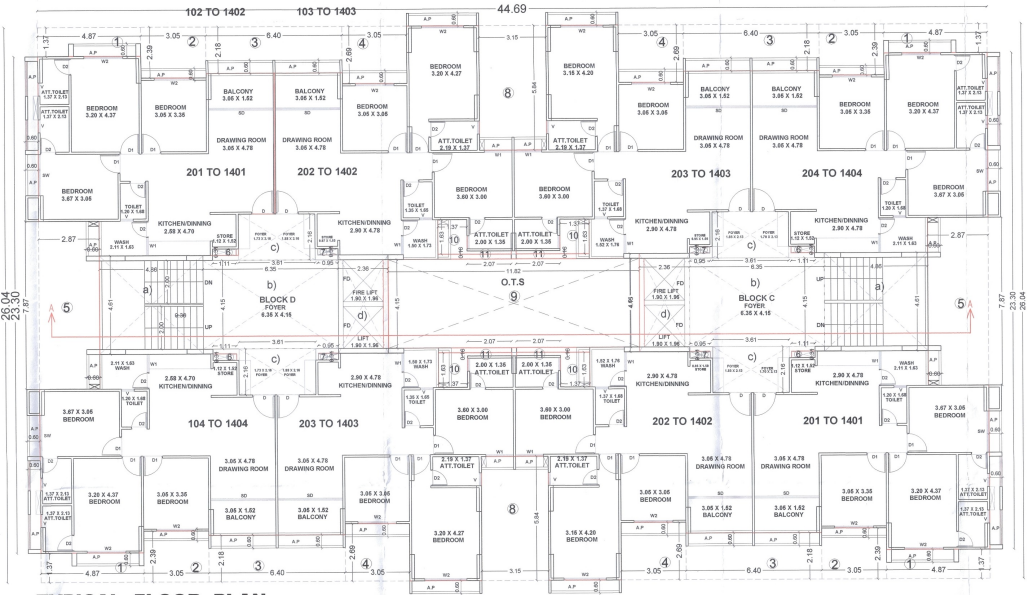
TERRACE PLAN



**FIRST FLOOR PLAN**

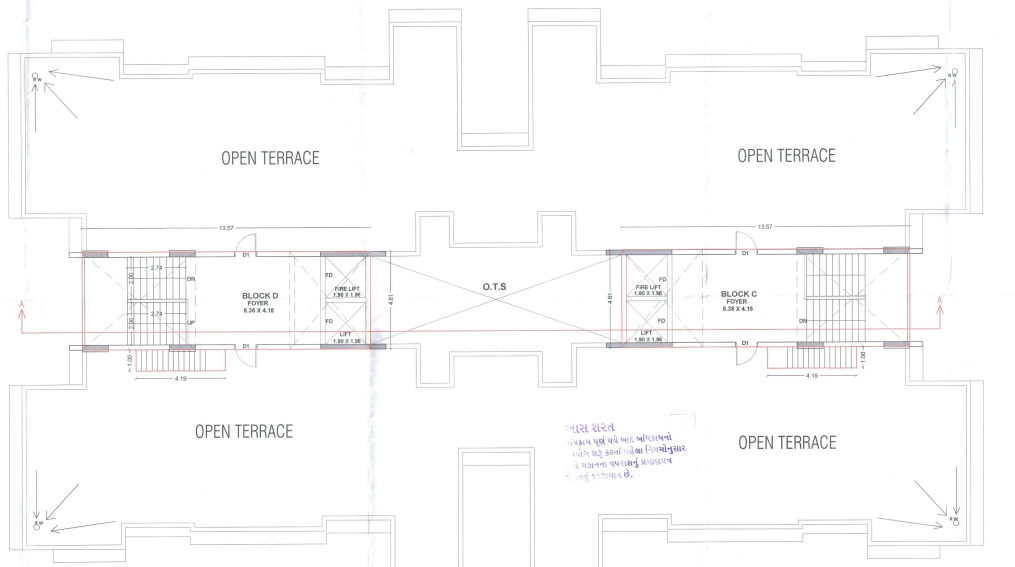


**GROUND FLOOR / HOLLOW PLINTH PLAN**



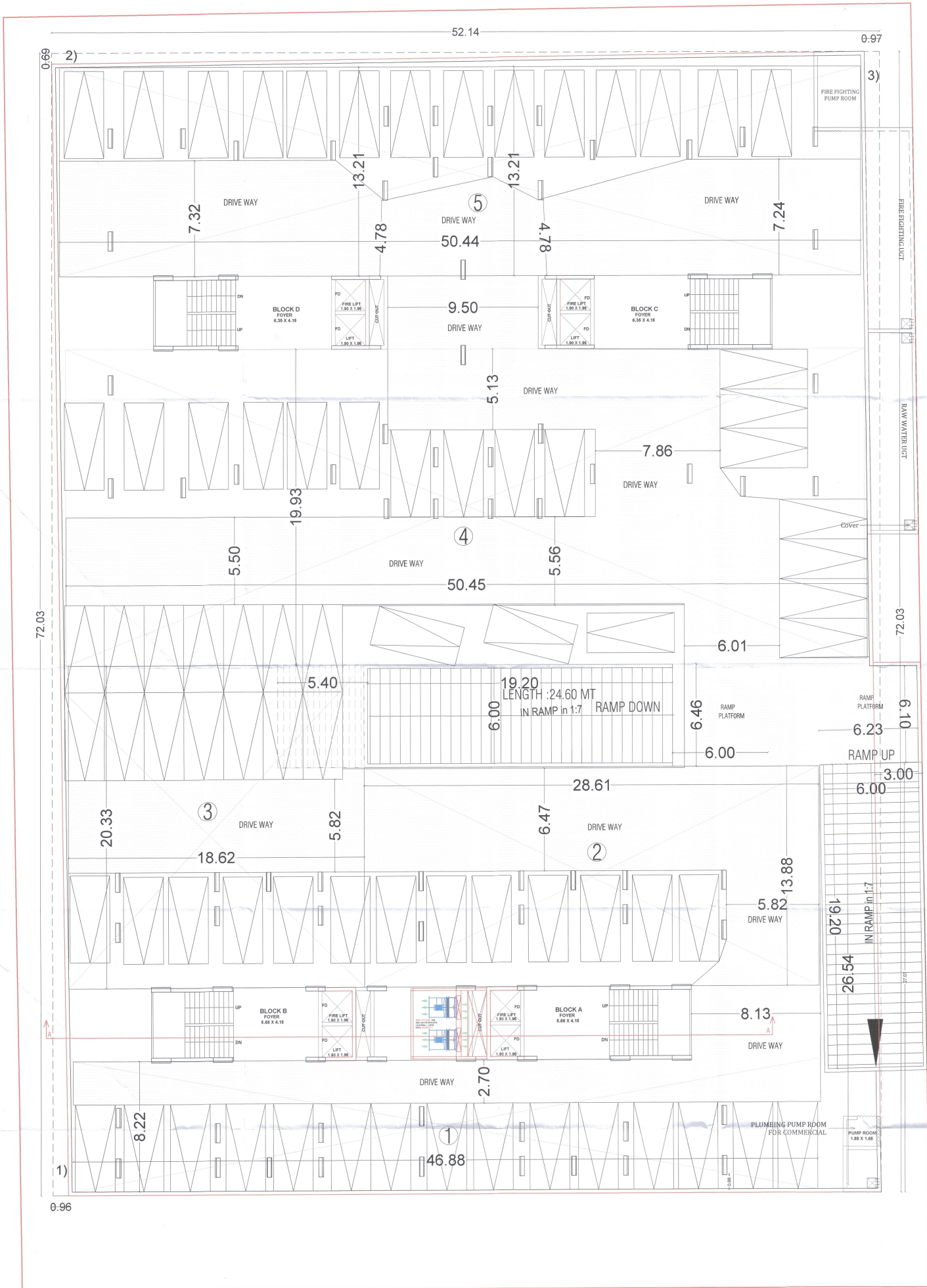
**TYPICAL FLOOR PLAN**

**(2ND FL, 3RD FL, 4TH FL, 5TH FL, 6TH FL, 7TH, 8TH, 9TH, 10TH, 11TH, 12TH, 13TH, 14TH)**



**TERRACE PLAN**

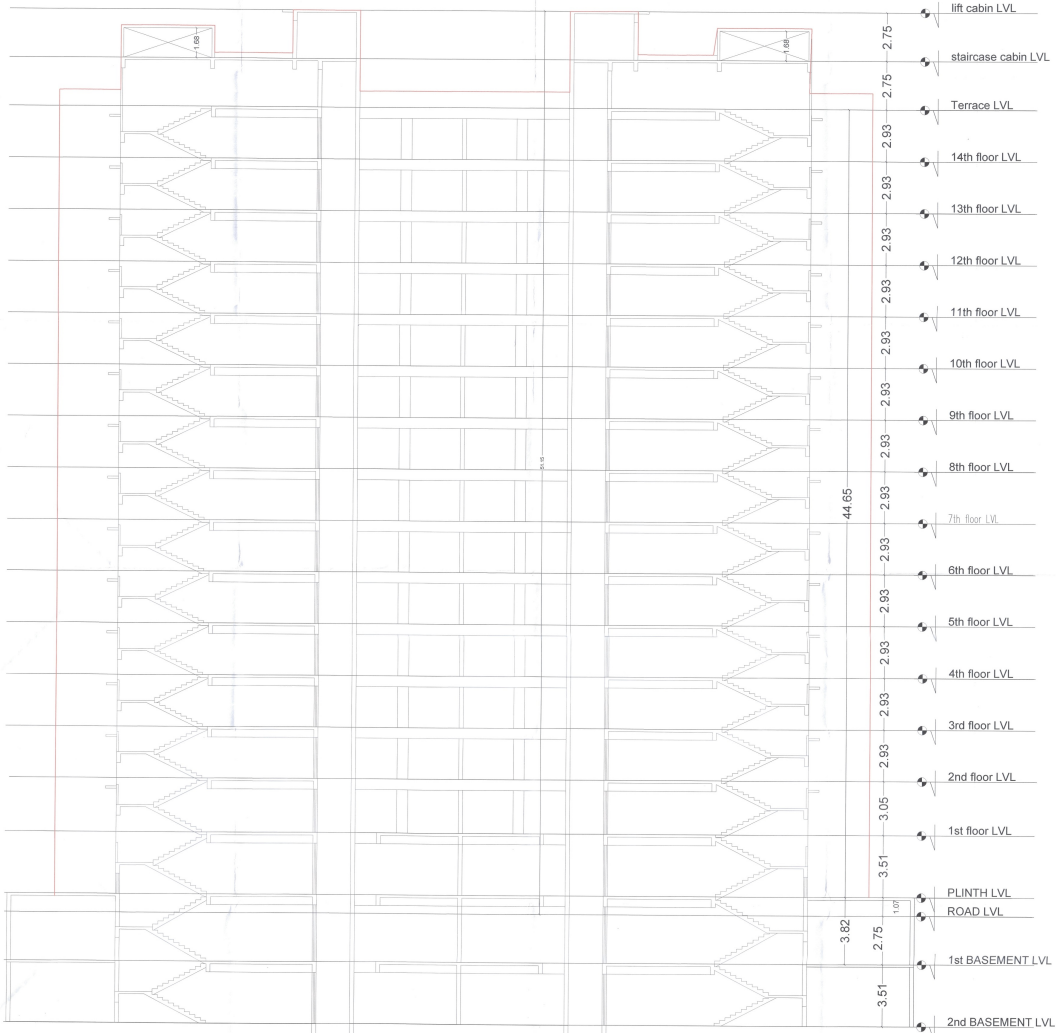
मूल शिष्ट  
 नक्शा में दो नए मकानों  
 को जोड़ कर मूल प्लानिंग  
 में संशोधन किया जाएगा  
 व संशोधन अनुसार संशोधन  
 कर लिया जाएगा.



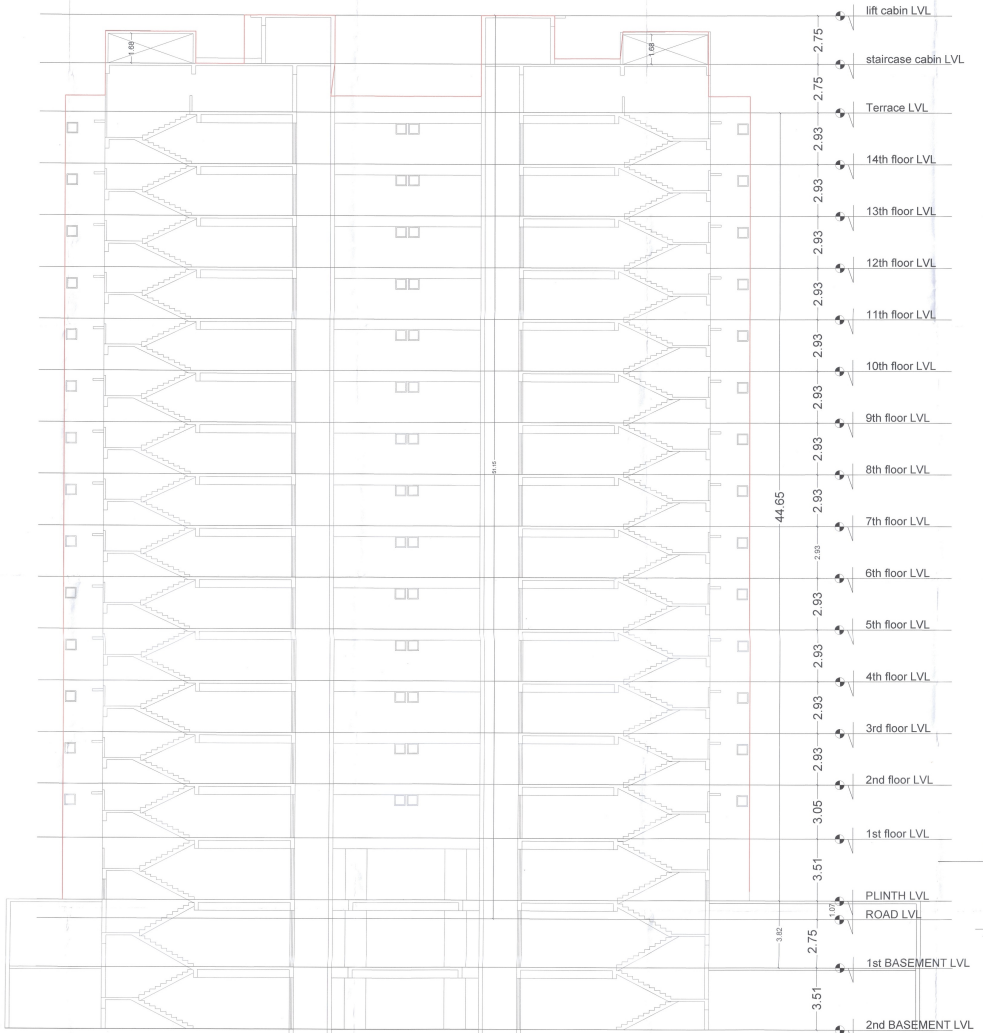
1 ST.BASEMENT

18.00 mt wide TP Road

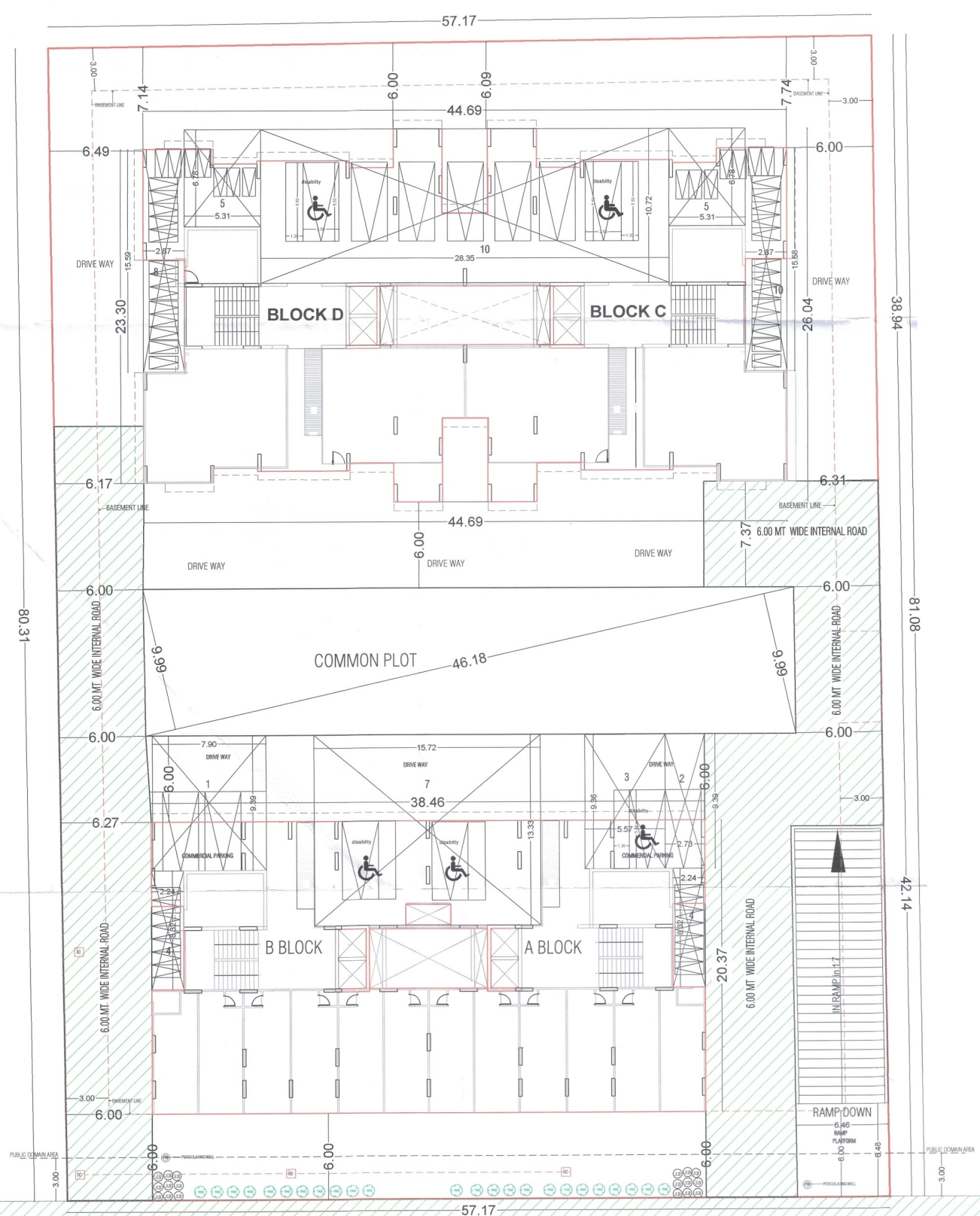




SECTION B-B

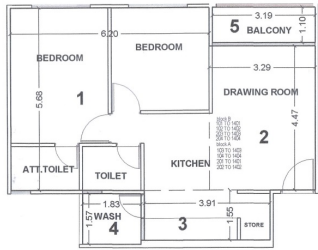


SECTION A-A

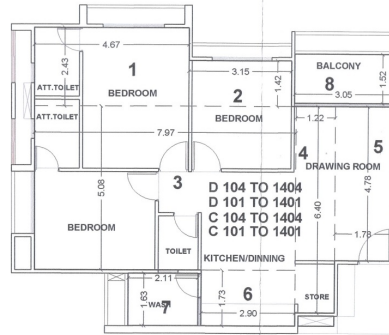


**PARKING LAYOUT PLAN**  
 SCALE :- 1Cm = 2.00 Meter

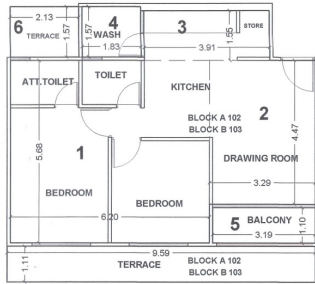
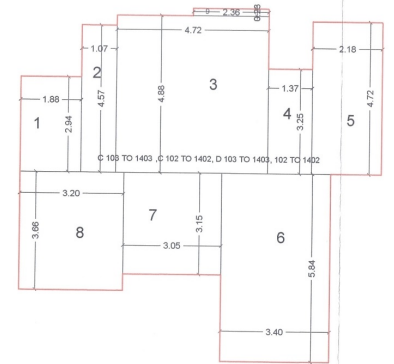




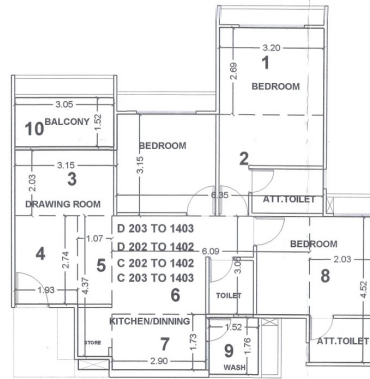
CARPET AREA BLOCK - A,B				
UNIT:	TYPICAL FLOOR	CARPET AREA: IN SQMT		
Block A 103 TO 1403	1. 6.20 x 5.68	=	35.22	55.99
	2. 3.29 x 4.47	=	14.71	
	3. 3.91 x 1.55	=	6.06	
Block B 101 TO 1401	4. 1.83 x 1.57	=	2.87	62.37
	5. 3.19 x 1.10	=	3.51	
	CARPET AREA			



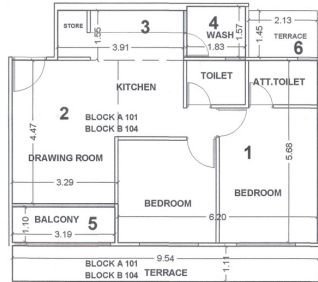
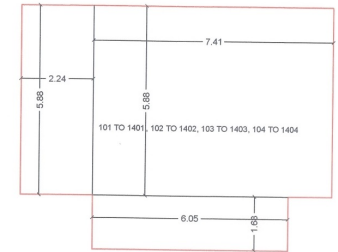
CARPET AREA BLOCK - C,D				
UNIT:	TYPICAL FLOOR	CARPET AREA: IN SQMT		
Block C 104 TO 1404	1. 4.67 X 2.43	=	11.35	77.65
	2. 3.15 X 1.42	=	4.47	
	3. 7.97 X 5.08	=	40.49	
Block D 104 TO 1404	4. 1.22 X 6.40	=	7.81	85.73
	5. 1.78 X 4.78	=	8.51	
	6. 2.90 X 1.73	=	5.02	
WASH			7. 2.11 X 1.63	= 3.44
BALCONY			8. 3.05 X 1.52	= 4.64
CARPET AREA			85.73	



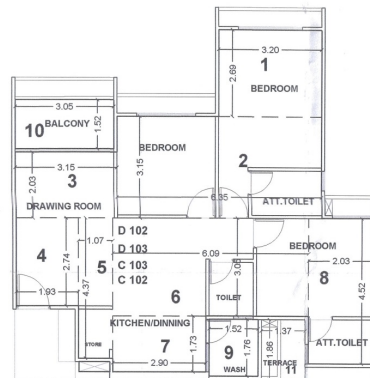
CARPET AREA BLOCK - A,B				
UNIT:	TYPICAL FLOOR	CARPET AREA: IN SQMT		
Block A 102 TO 1402	1. 6.20 x 5.68	=	35.22	55.99
	2. 3.29 x 4.47	=	14.71	
	3. 3.91 x 1.55	=	6.06	
Block B 103 TO 1403	4. 1.83 x 1.57	=	2.87	76.35
	5. 3.19 x 1.10	=	3.51	
	6. 2.13 x 1.57	=	3.34	
TERRACE			7. 9.59 X 1.11	= 10.64
CARPET AREA			76.35	



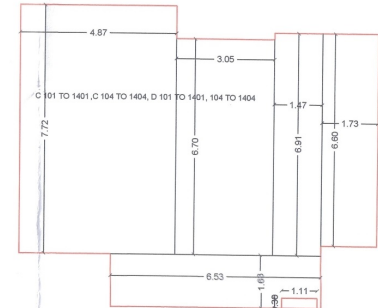
CARPET AREA BLOCK - C,D				
UNIT:	TYPICAL FLOOR	CARPET AREA: IN SQMT		
Block C 203 TO 1403	1. 3.20 X 2.69	=	8.61	77.74
	2. 6.35 X 3.15	=	20.00	
	3. 3.15 X 2.03	=	6.39	
Block D 202 TO 1402	4. 1.93 X 2.74	=	5.29	85.06
	5. 1.07 X 4.37	=	4.68	
	6. 6.09 X 3.05	=	18.57	
WASH			7. 2.90 X 1.73	= 5.02
BALCONY			8. 2.03 X 4.52	= 9.18
WASH			9. 1.52 X 1.76	= 2.68
BALCONY			10. 3.05 X 1.52	= 4.64
CARPET AREA			85.06	



CARPET AREA BLOCK - A,B				
UNIT:	TYPICAL FLOOR	CARPET AREA: IN SQMT		
Block A 101 TO 1401	1. 6.20 x 5.68	=	35.22	55.99
	2. 3.29 x 4.47	=	14.71	
	3. 3.91 x 1.55	=	6.06	
Block B 104 TO 1404	4. 1.83 x 1.57	=	2.87	76.05
	5. 3.19 x 1.10	=	3.51	
	6. 2.13 X 1.45	=	3.09	
TERRACE			7. 9.54 X 1.11	= 10.59
CARPET AREA			76.05	



CARPET AREA BLOCK - C,D				
UNIT:	TYPICAL FLOOR	CARPET AREA: IN SQMT		
Block C 102 TO 1402	1. 3.20 X 2.69	=	8.61	77.74
	2. 6.35 X 3.15	=	20.00	
	3. 3.15 X 2.03	=	6.39	
Block D 102 TO 1402	4. 1.93 X 2.74	=	5.29	87.61
	5. 1.07 X 4.37	=	4.68	
	6. 6.09 X 3.05	=	18.57	
WASH			7. 2.90 X 1.73	= 5.02
BALCONY			8. 2.03 X 4.52	= 9.18
WASH			9. 1.52 X 1.76	= 2.68
BALCONY			10. 3.05 X 1.52	= 4.64
TERRACE			11. 1.37 X 1.86	= 2.55
CARPET AREA			87.61	



# Specification

## Structure

Good quality R.C.C. frame structure with Block wall.

## Wall finish

Internal single coat plaster with white putty & External double coat sand faced plaster with paint.

## Kitchen

Granite top platform with S.S. sink & designer tiles dado up to lintel level.

## Flooring

Good quality Vitrified tiles in entire flat. China mosaic in terrace for heat reflection.

## Electrification

Single phase ISI Concealed copper wiring with modular switches, MCB & ELCB with sufficient electric points.

## Doors & Windows

Decorative main door with wooden frame, all other doors are flush door. Powder coated aluminum section sliding windows with plain glass & stone sill.

## Toilet & Plumbing

Glazed tiles on flooring & dado up to lintel level. Concealed plumbing with good quality Pipe fittings, C.P. fittings & Sanitary ware.

**NEEVA**  
DEVELOPERS

BOOKING CONTACT  
**MO : 7575 00 2200**  
**MO : 706 9999 927**

ARCHITECT  
**design code pvt.ltd.**  
architect interior  
PH : 079 - 2644 6495  
designcodepvtltd@gmail.com  
www.designcode.net.in

STRUCTURE  
**SHREEJI STRUCTURALS**

SITE ADDRESS : **NEELKANTH HEIGHTS**, Nr. Sahjanand Skyline, Uvarsad-Vavol Road , Vavol-382016