

Life style



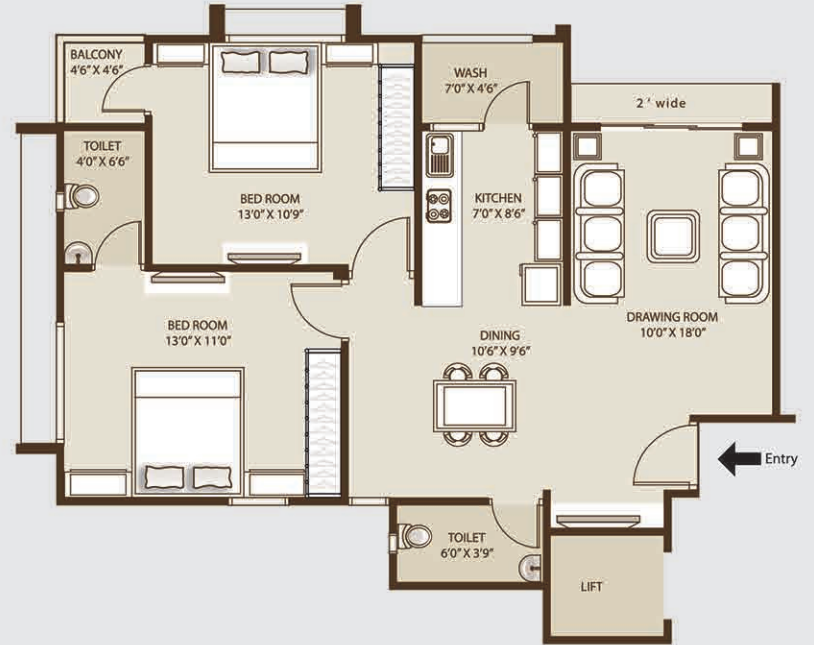
children's park

parking

garden

senior citizen park

TYPE - A/1
130 sq. yrd

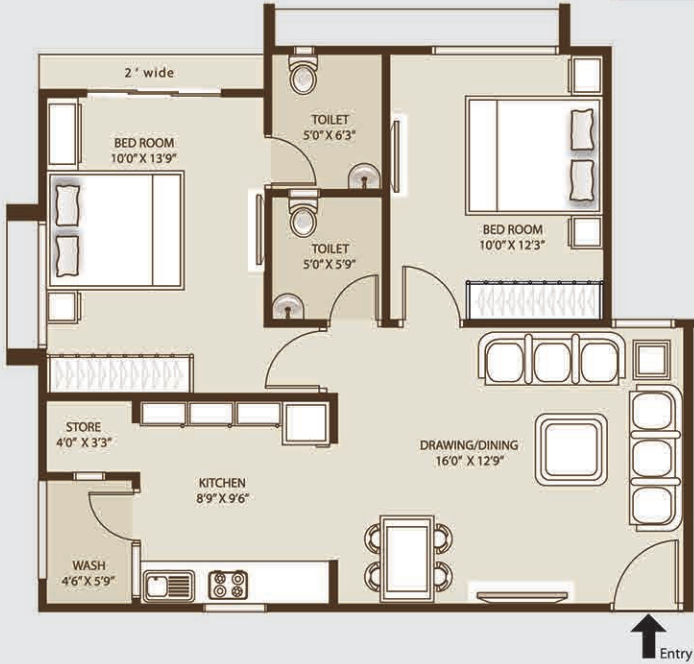


Bird eye view





TYPE - B
120 sq. yrd



HARI OM
Elegance

Characterized by grace...!

Hari Om "ELEGANCE" is designed as modern residential apartment complex like a precious jewel in an exciting setting. It incorporates pleasing architecture, high aesthetics and modern construction Values. Discover the delightful elevation, high class amenities and all facilities that make Hari Om "ELEGANCE" just the place you want to stay all your life. Give your family the gift of a home that appreciates in value each day and justify your modest investment with high returns in the future.

Give your imagination a healthy boost with 200 units of apartment enclave and look forward to live in a 2 bedroom luxury apartment set in a beautiful landscape of inspiring greenery with a conscious mind to conserve the old heritage and decades old plantation of the village atmosphere emerging with new looks in the heart of village GOODHAVI.

It welcomes you to upgrade your lifestyle with modern amenities and beautiful facilities. The serene environments is well away from the congested city and a developing area like New Satellite, yet close enough to reach the city centers in minutes.

We invite you to enjoy a healthy and happy life in HARI OM "ELEGANCE" , just the perfect way of life you deserve to live.

Amenities



SENIOR CITIZEN PARK



OPEN AIR CINEMA



CHILDREN PLAY AREA



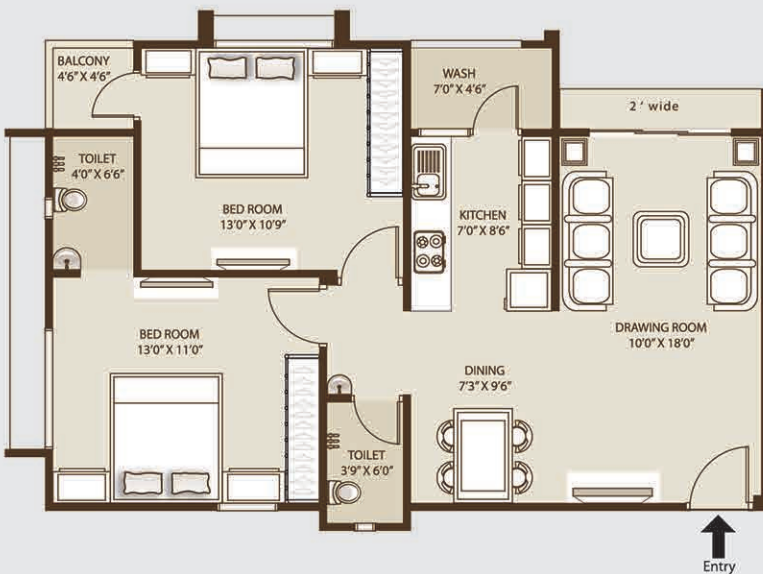
CLUB HOUSE



GYMNASIUM



TYPE - A
125 sq. yrd



Layout plan





HARI OM Elegance



Hari Om Avenue, 31/B Government Servent Soc.
Nr. Municipal Market, Navrangpura,
A'bad - 9. Ph : 26421490. Site: 9727746960
Email: hariom1975verma@yahoo.co.in

ARCHITECT :
MADHYARTH

STRUCTURAL ENGINEER :
SARJAN CONSULTANT

DESIGN BY: SEVEN STEP - MD - 18242 3616

Characterized by grace...!

Opp. Bapasitaram Madhuli, Bopal-Ghuma to Sanand Road,
Godhavi. Ahmedabad.



We give happiness, smile & peace

SALIENT FEATURES

1. Decorative entrance Gata.
2. Club House with indoor games.
3. Children Play Area with designed Landscape.
4. Gymnasium.
5. Open Air Cinema.
6. R.C.C. Road connecting each Block with street Lights.
7. Bore well for water supply.
8. 24 Hours Professional Security.
9. Percolating well.
10. Antitermite treatment in entire plot.
11. Senior Citizen Park.

SPECIFICATION :

1. Decorative main door.
2. Vitrified tiles Flooring on ground Floor.
3. Porcelino Flooring in others room dining room.
4. Granite platform with SS sink and colour glazed tiles dedo upto lintle in kitchen.
5. Coloured glazed tiles Flooring and dedo up to lintle level in all toilets.
6. UPVC material for plumbing.

ELECTRIC:

1. Concealed copper wiring, TV and telephone point in drawing and master Bed-room.
2. Electrical point as per architect's details.
3. Singal phase electric connection to each unit.

DOORS AND WINDOWS

1. Wooden frames with wooden flush door, powder coated aluminium sliding windows, P.V.C. frame and door in all toilets.

PLASTER:

1. Internal smooth plaster with lime wash Finish and external double coat sand faced plaster with water proof paint.

NOTE :

1. All members shall abide by any changes in design and area if they are made to comply statutory regulations.
2. Internal change can be done only with prior-permission and at extra cost, in advance.
3. G.E.B. legal panchayat, ALUDA, Development charges and maintenance shall be borne by the members.
4. Stamp duty, documents registration charges, service taxes individually as applicable and shall be borne by the members.
5. Service tax is payable on all due installments (Non- Refundable)
6. Variations in shape, size and levels likely in glazed tiles, Ceramic tiles, Marble and granite due to constraints of availability and manufacturing process.
7. Possession shall be given after full payment.
8. Changes in external elevation shall not be permitted.
9. All measurements are without plaster.
10. Project organizer/ Developers shall have the rights to change or revise or abandon altogether or extend. (By incorporation additional land whether contiguous or non-contiguous to the existing land) the scheme or the Part of the scheme (including roads, road widths, areas and size and/or the location of common plots and rationalization of boundaries of some or all of the plots and/or the entire scheme) or any unit or combine two or more units and all such charges, subdivision and/or combinations shall be binding all. The facilities mentioned here can also be enjoyed by unit holders of their sub-division plots. Developers shall have the rights to change the size and color of the flooring and Dedo tiles.
11. This brochure is not a legal document. It is for the easy display of the Project only.

Our journey of success



HARI OM MARKET



HARI OM NAGAR



HARE KRISHNA COMPLEX



HARE OM PARK



HARI OM TOWER



HARI OM AVENUE



HARI OM APARTMENT



HARI OM BUNGALOW



HARI OM COMPLEX



HARI OM BUNGALOW



HARI OM VILLA



HARI OM HOLIDAY HOMES



HARI OM RESIDENCY

On going projects



HARI OM HOLIDAY HOMES
PHASE-II AT LAPKAMAN



DEVANSH HARMONNY
AT LAPKAMAN



About us

"Hari Om Group" ... owes its origin to Late Shri Ramlabhaya Khanchand Verma, who envisioned a success story waiting to take shape in the retail business in 1975 itself growing swiftly to become the leading property developers in Ahmedabad.

Hari Om Group has shaped the skyline of Ahmedabad and Surroundings with developments spanning across Residential, Commercial and Leisure sectors. Hari Om Group - Since 1975 has a rich legacy of over 3 decades in the construction of residential and commercial projects. The experience has taught us the importance of giving our clients the resources of a large infrastructure company and with each experience we go an extra mile to understand the clients need to meet and exceed their goals and aspirations. The group has developed over millions of sq. ft. of space all over Ahmedabad and enjoys a solid reputation of trust and quality with thousands of satisfied families and corporate.

Over the years, Hari Om has created a distinctive mark on the skyline of Ahmedabad and its people, as a leading real estate developers. The trailblazing success of the business can be attributed to Hari Om Group's core philosophy of "no asterisks in our communication, no hidden clause in our legal documents, and absolutely no shades of grey in our business processes."



Words of Inspiration,

Our Vision & Our Mission...

"If there is an innovative way of doing something, we will find it. We are about finding newer ways of setting benchmarks. We approach every project/task ahead of us with an attitude of never say never. Continuously exceed the expectations of our customers and improve customer experience through constant innovation and understanding, with a focus on quality and transparency."

Late Shri Ramlabhaya Khanchand Verma (Founder, Hari Om Group)



TYPE - C
120 sq. yrd

