

LOCATION MAP



Aradhyam PRIME

# Aradhyam PRIME

4&5 BHK Premium Triplexes

*Experience*  
a Life of Luxury, Space &  
*Timeless Comfort*

Aradhyam PRIME

Site At: Jatkhedi, Hoshangabad Road, Bhopal

📞 99772 22467 | 99772 22468

Promoter



Architect



CREATIVE TMS DESIGN STUDIO  
9981263394 / 9993003110

Luxurious Villa At Jatkhedi, Hoshangabad Rd., Bhopal

Disclaimer : The project information and details that are displayed on this brochure are purely for informational purposes



Aradhyam  
PRIME

Aradhyam  
PRIME

A Grand Welcome to  
*Refined Living*

Step into Aradhyam Prime through a thoughtfully designed entrance that sets the tone for luxury living. Surrounded by lush greenery and modern architecture, the grand gateway offers a sense of security, elegance, and exclusivity. Designed for 4 & 5 BHK Premium Triplexes, this welcoming entrance reflects a lifestyle crafted for spacious, refined, and elevated living.

Aradhyam  
PRIME

Type A – Designed for  
*Elevated Living*

A contemporary elevation with balanced architecture and elegant detailing. Thoughtfully designed balconies, landscaped fronts, and well-defined spaces create a harmonious blend of style and comfort. Every element is crafted to enhance natural light, ventilation, and a refined living experience.



A thoughtfully designed  
*layout for Comfortable*  
everyday living.

**Type-A 5BHK Plan**

**Plot Area**  
Plot Area 1451 sq. ft. aprox

**Ground Floor**  
Total built up area 1022 sq. ft.

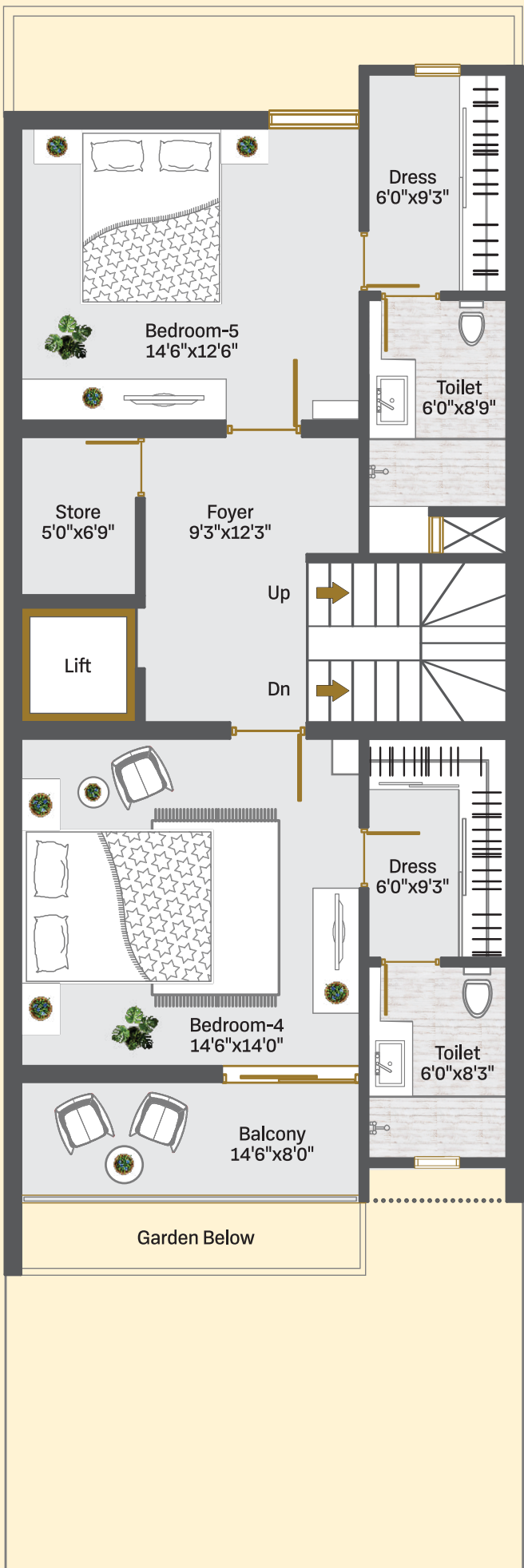
**First Floor**  
Total built up area 1065 sq. ft.

**Second Floor**  
Total built up area 1022 sq. ft.

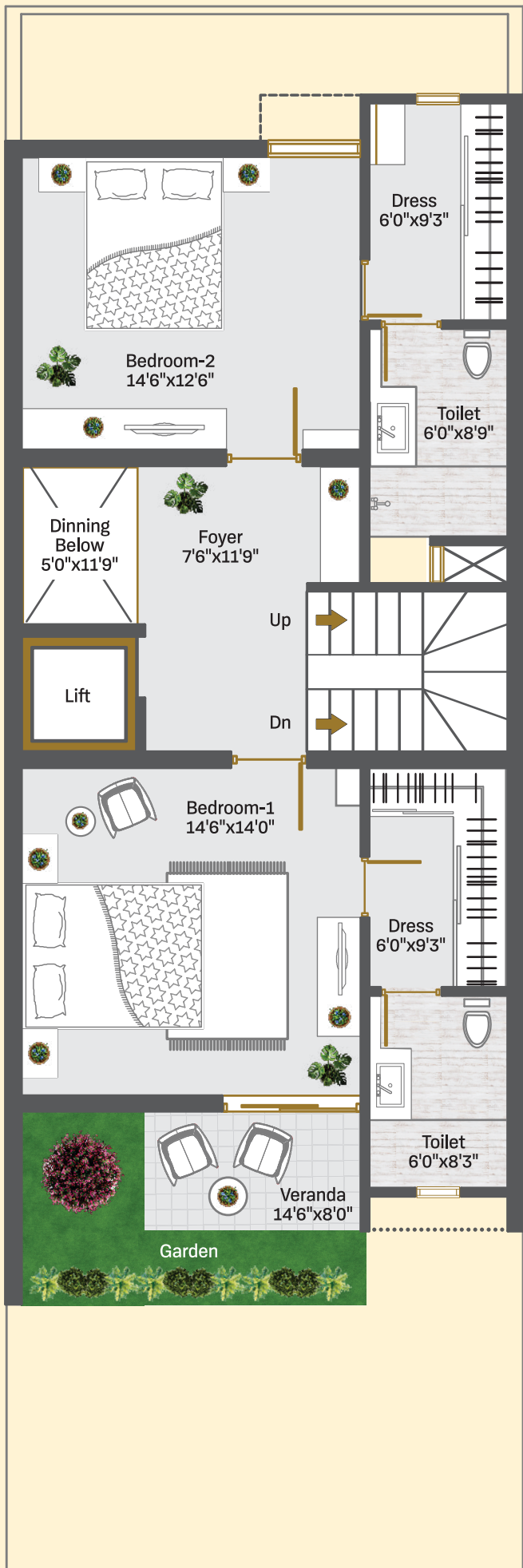
**Complete Built Up Area**  
Total built up area 3109 sq. ft.



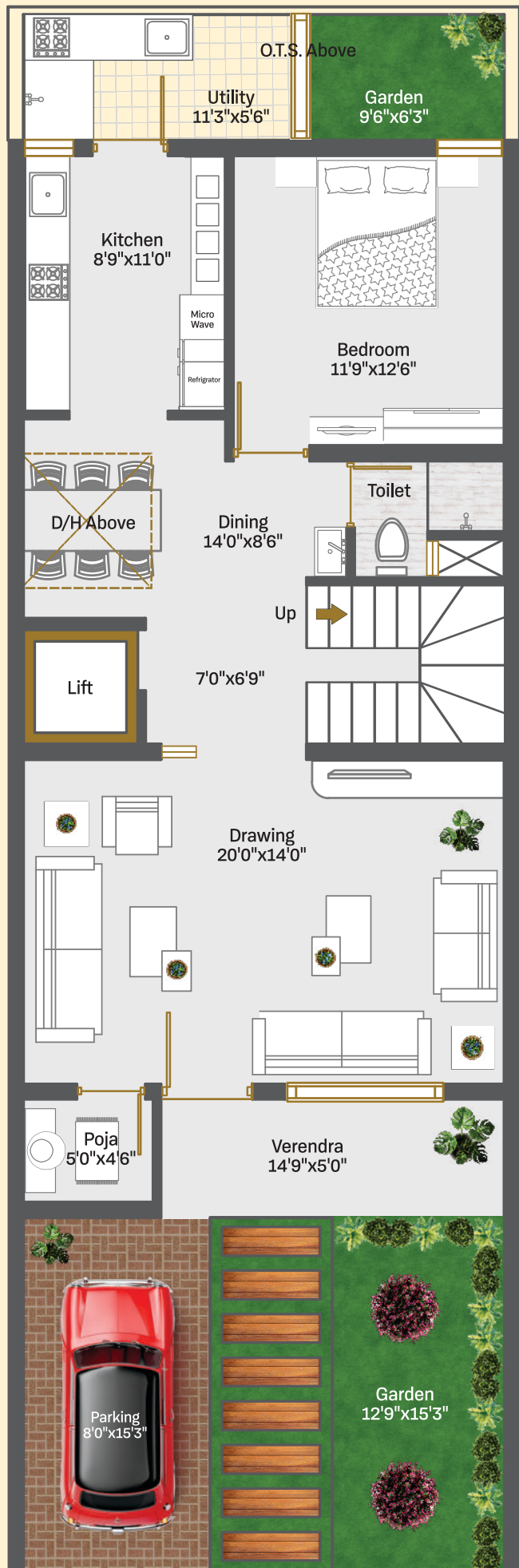
**Second Floor**



**First Floor**



**Ground Floor**



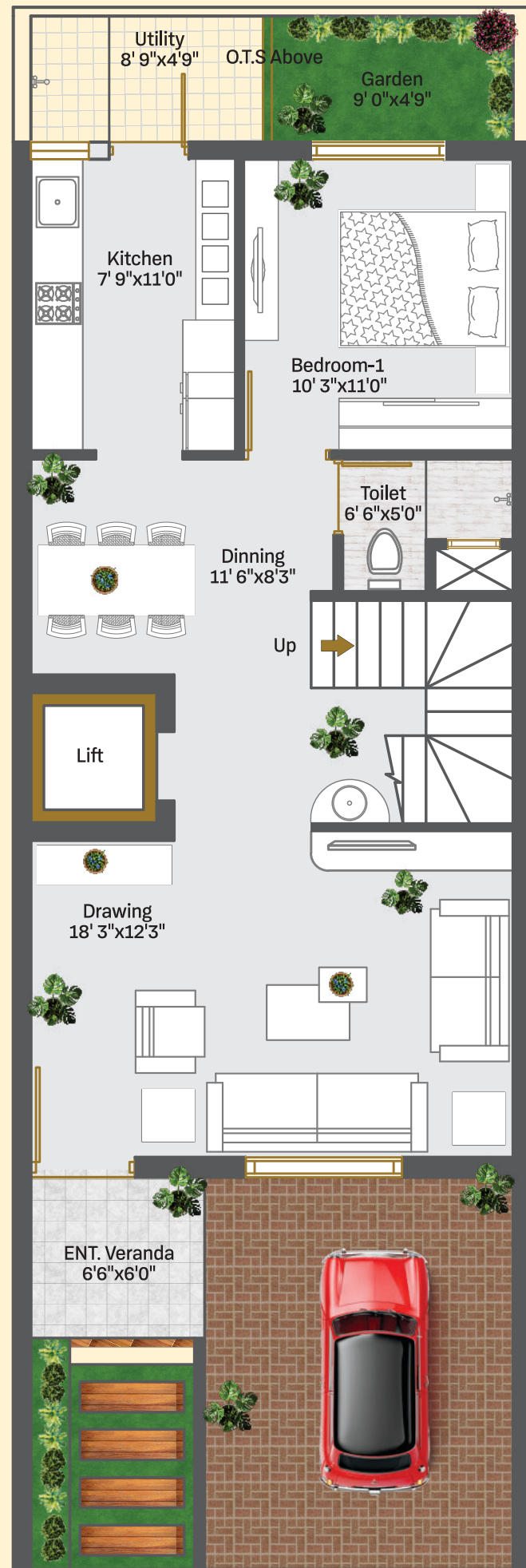
**Type-A 5BHK Plan**



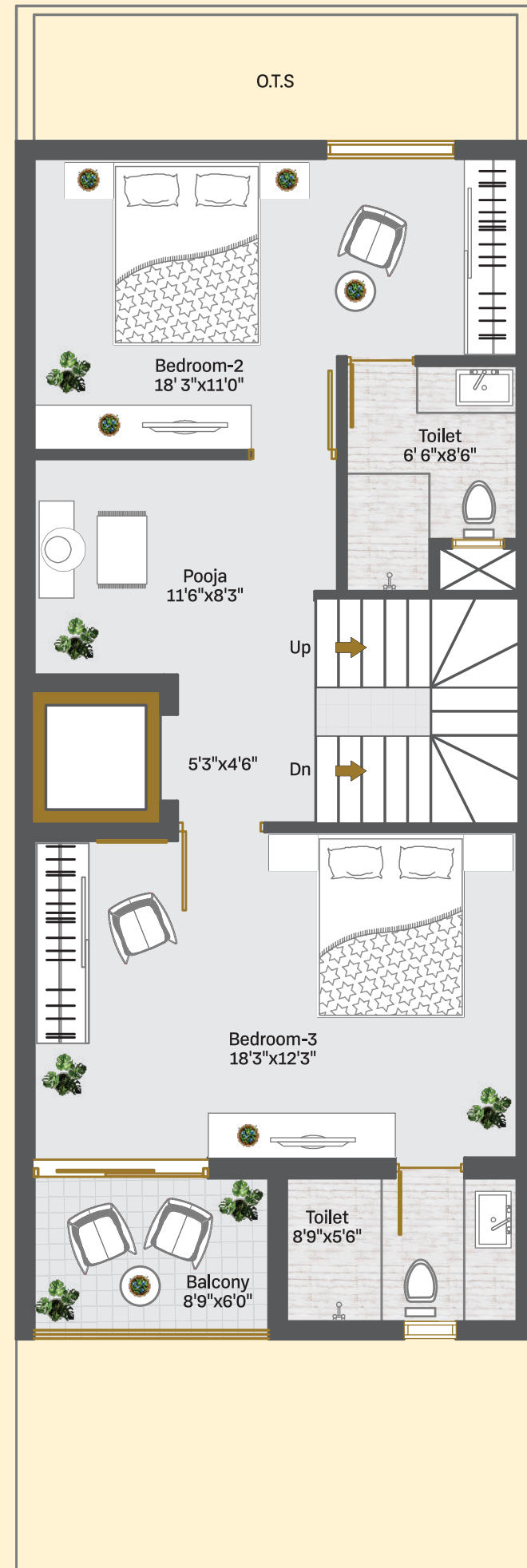
Aradhyam  
PRIME

Type B – Contemporary  
*Comfort Redefined*

A sleek, modern elevation with clean lines and refined textures. Spacious balconies, private entrances, and well-planned outdoor areas enhance both aesthetics and functionality. Designed to offer privacy, openness, and everyday comfort, this elevation reflects a perfect balance of modern living and thoughtful design.

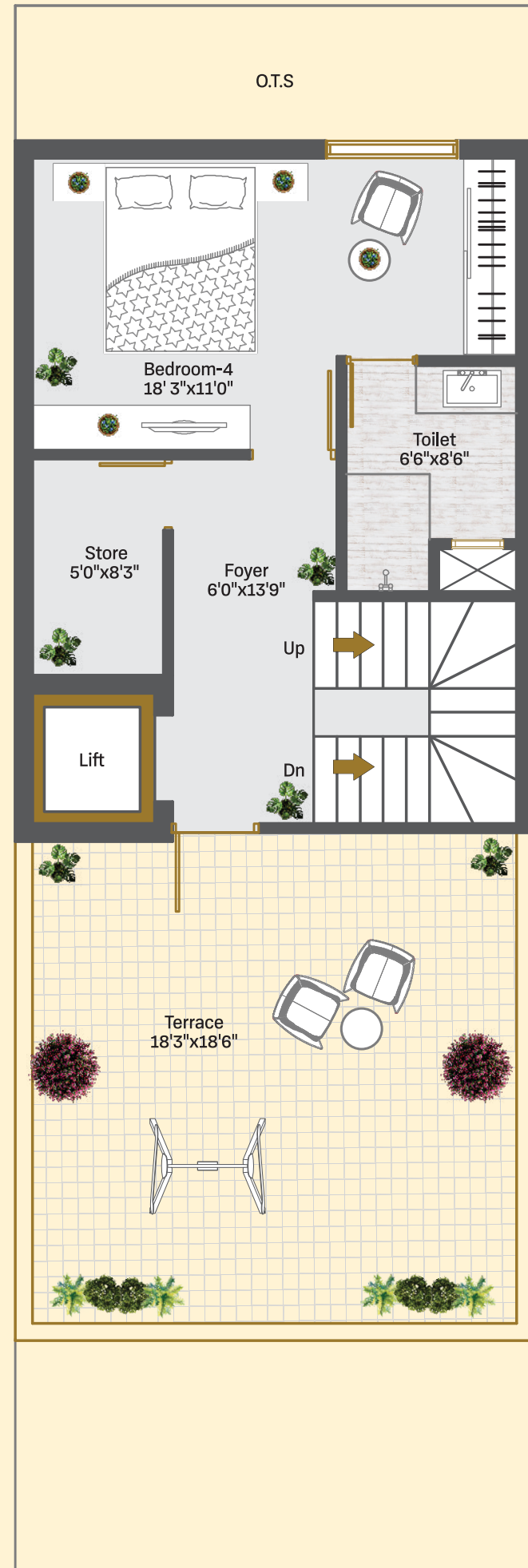


**Ground Floor**



**First Floor**

# Type-B 4BHK Plan



**Second Floor**

**Aradhyam**  
PRIME

Smartly designed floor plan for a balanced & *Spacious lifestyle.*

### Type-B 4BHK Plan

<b>Plot Area</b>	Plot Area	1151 sq. ft. aprox
<b>Ground Floor</b>	Total built up area	764 sq. ft.
<b>First Floor</b>	Total built up area	882 sq. ft.
<b>Second Floor</b>	Total built up area	506 sq. ft.
<b>Complete Built Up Area</b>	Total built up area	2152 sq. ft.

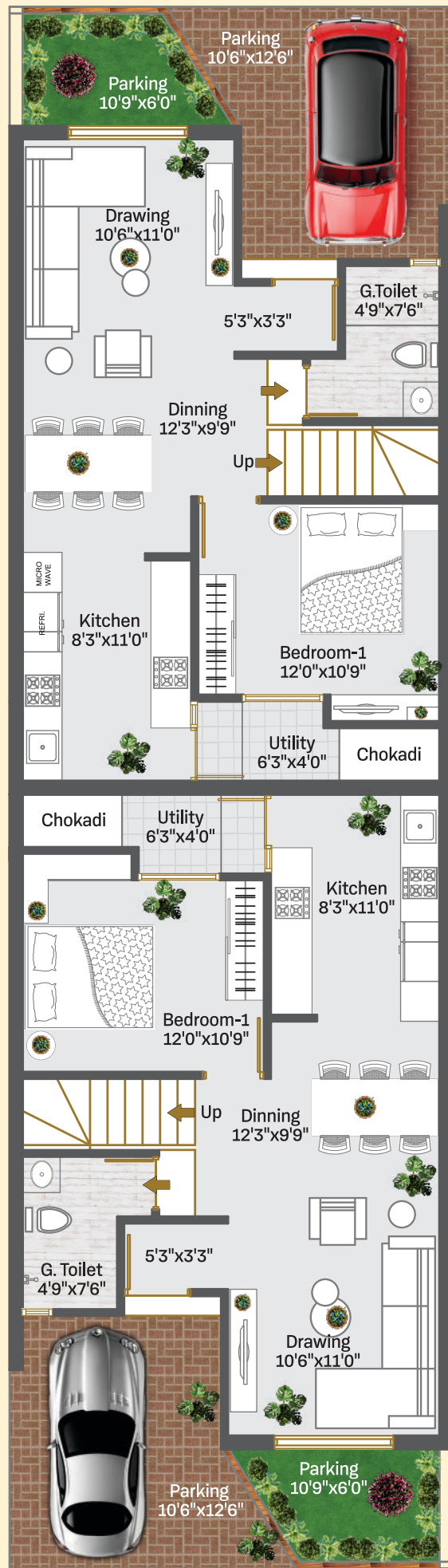




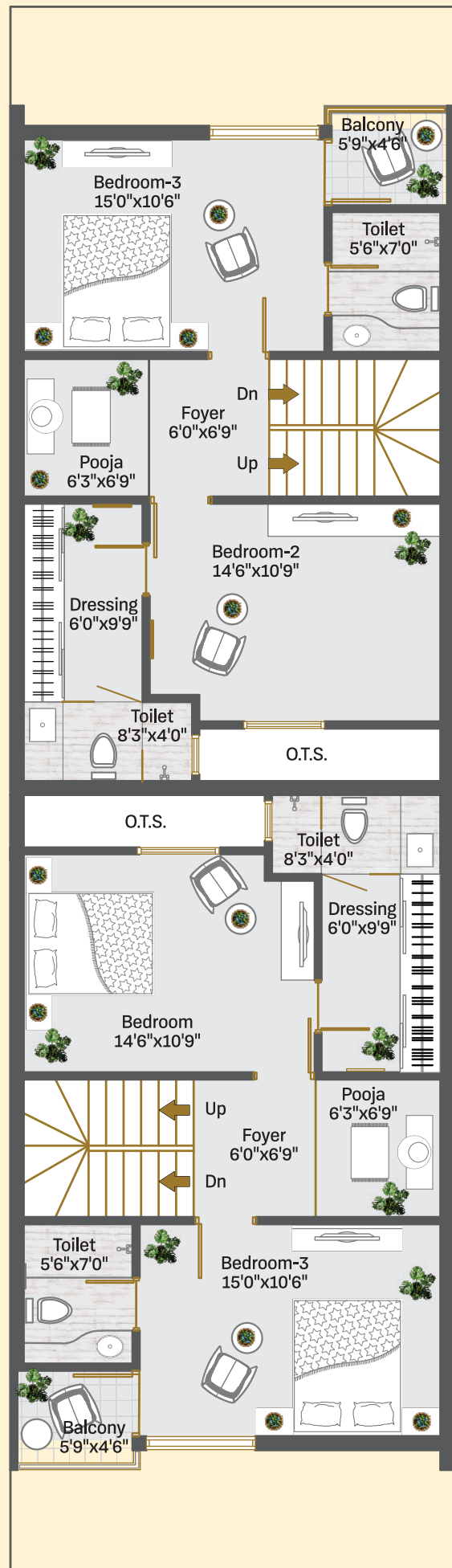
Aradhyam  
PRIME

Type C – Harmony of  
*Space & Style*

A refined elevation designed around openness and greenery. Wide internal roads, elegant balconies, and lush landscaped elements create a calm, resort-like atmosphere. The thoughtfully planned façade ensures privacy, natural light, and a seamless blend of modern architecture with nature-inspired living.

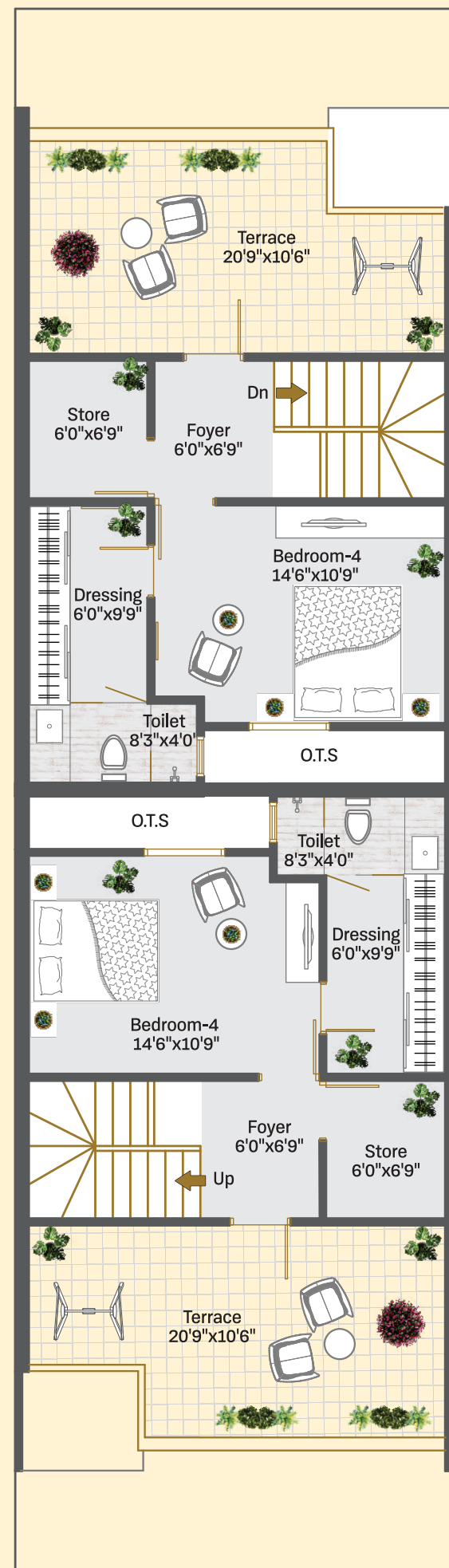


**Ground Floor**



**First Floor**

# Type-C 4BHK Plan



**Second Floor**

Smart layouts crafted for  
*Modern living*

**Type-C 4BHK Plan**

<b>Plot Area</b>	858 sq. ft. aprox
<b>Ground Floor</b>	Total built up area 614 sq. ft.
<b>First Floor</b>	Total built up area 689 sq. ft.
<b>Second Floor</b>	Total built up area 441 sq. ft.
<b>Complete Built Up Area</b>	Total built up area 1744 sq. ft.



# LAYOUT PLAN

Smartly Planned for  
*Everyday Comfort*



Elevate Your Living Standard with  
*Premium add-ons*

Perfect Environment		Perfect Security	
Perfect Location	Perfect Location		Perfect Connectivity
Perfect Amenities		Perfect Investment	



# Aradhyam PRIME

## Leisure Amenities



Multi Purpose Hall



Swimming Pool



Outdoor Sitting Area



Gymnasium



Landscaped Garden



Kids Play Area



Indoor Games

## Modern Comforts for a *Sophisticated lifestyle*

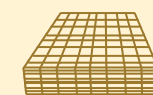
- Elegant Entrance gate
- Number plate to maintain the uniformity of the project
- Underground cabling for electricity
- CCTV cameras in common areas for round the clock surveillance
- Water and drainage facility
- Termite resistance treatment
- Individual 3-Phase electric connection
- Tremix concrete, Heavy paver block internal roads with designer street lights

### Specifications



#### Structure

All RCC & Brick masonry work as per structural engineer's design



#### Flooring

- High grade Nano finish GVT tile flooring
- Tiles flooring in parking areas



#### Doors and Windows

- Doors : Elegant wooden entrance door, internal flush doors, artificial stone frames in all doors.
- Windows : Anodized powder coated Aluminum section windows with safety grill.



#### Paint and Finish

- Interior : Smooth plaster with wall putty & primer
- Exteriors : Double coat plaster with water proof paint



#### Kitchen

- Exclusive full body tiles in kitchen platform with sink & designer tiles upto lintel level.
- Wash Area: Tiles dado and flooring tiles



#### Terrace

Open terrace finished with chemical water proofing



#### Electrification:

- Concealed copper wiring of approved quality
- Branded premium quality modular switches with sufficient
- Electrical points as per architect's plan

