

P NE PETRE AT



A 3 BHK Residential



AMENITIES



2 Private Terrace Flat



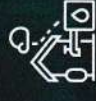
Modern Facade



Strategic Location



24 hrs Water Supply



Rain Water Harvesting

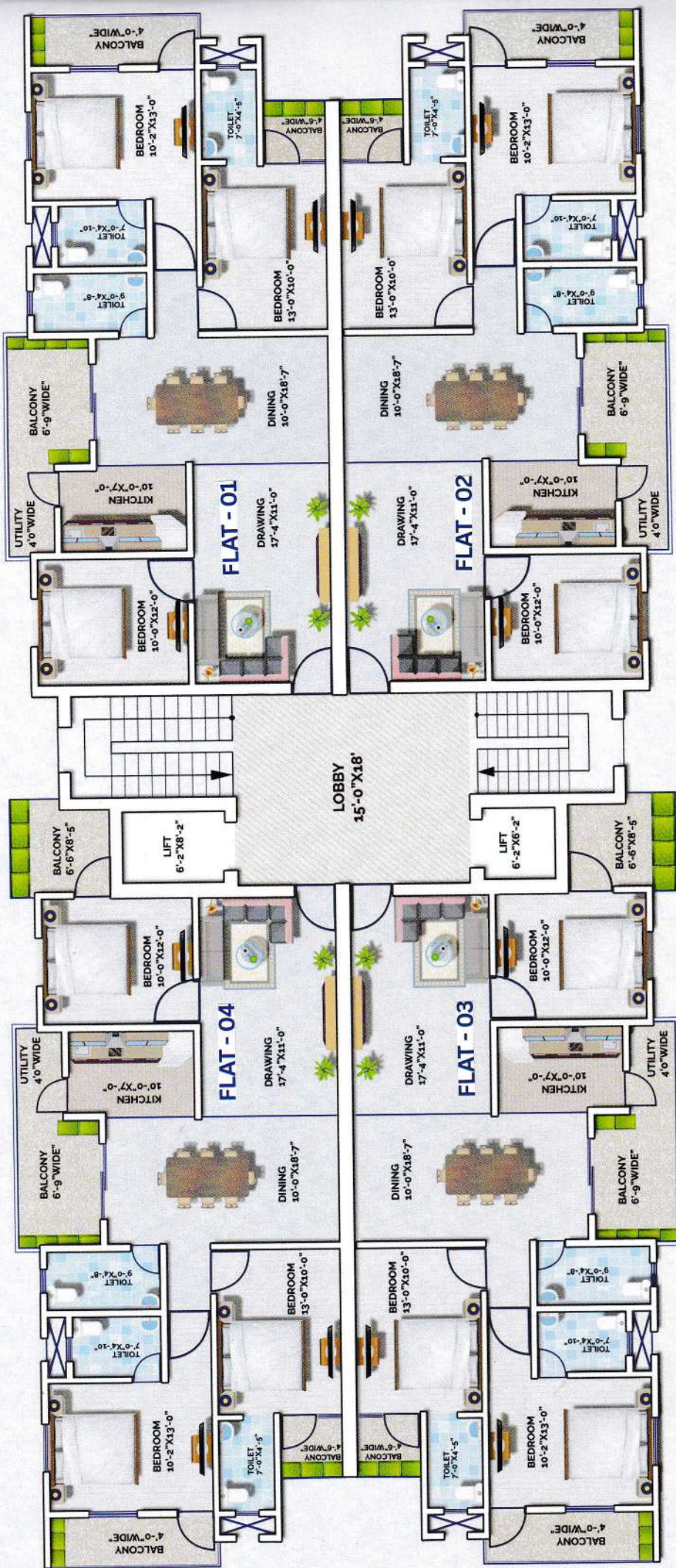


24/7 Security



24/7 Power Backup

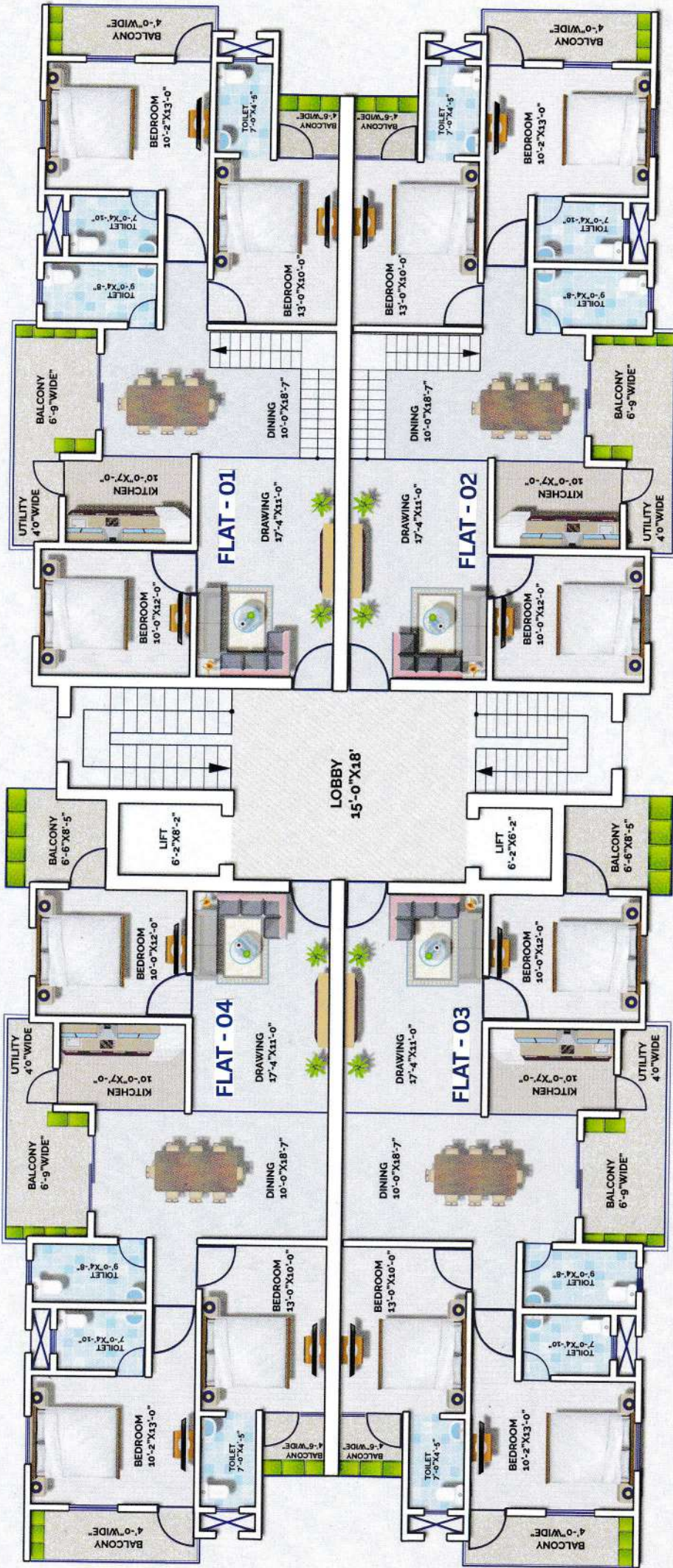




BLOCK A

G+1 TO G+5 FLOOR PLAN

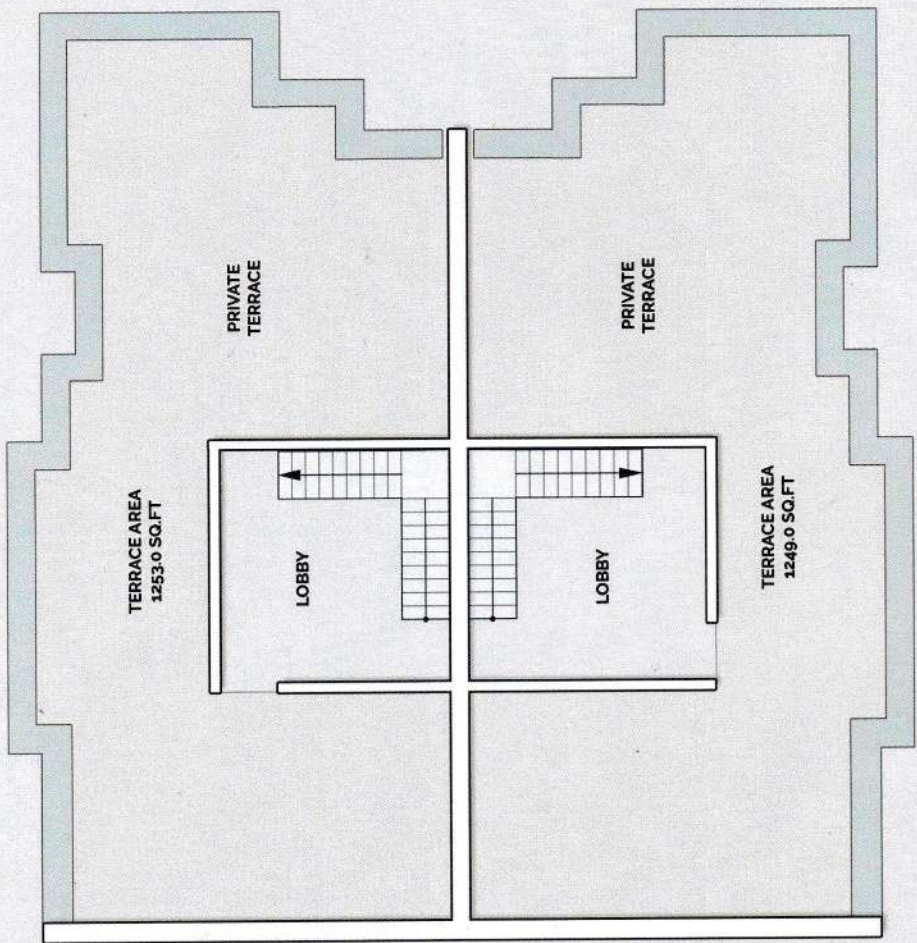
FLAT	S.B. AREA	UNIT
01	1502.0 SQ.FT.	3 BHK
02	1502.0 SQ.FT.	3 BHK
03	1574.0 SQ.FT.	3 BHK
04	1574.0 SQ.FT.	3 BHK



BLOCK A

G+6 FLOOR PLAN

FLAT	S.B. AREA	UNIT
01	1502.0 SQ.FT.	3 BHK
02	1502.0 SQ.FT.	3 BHK
03	1574.0 SQ.FT.	3 BHK
04	1574.0 SQ.FT.	3 BHK



TERRACE AREA
1253.0 SQ.FT

PRIVATE
TERRACE

LOBBY

LOBBY

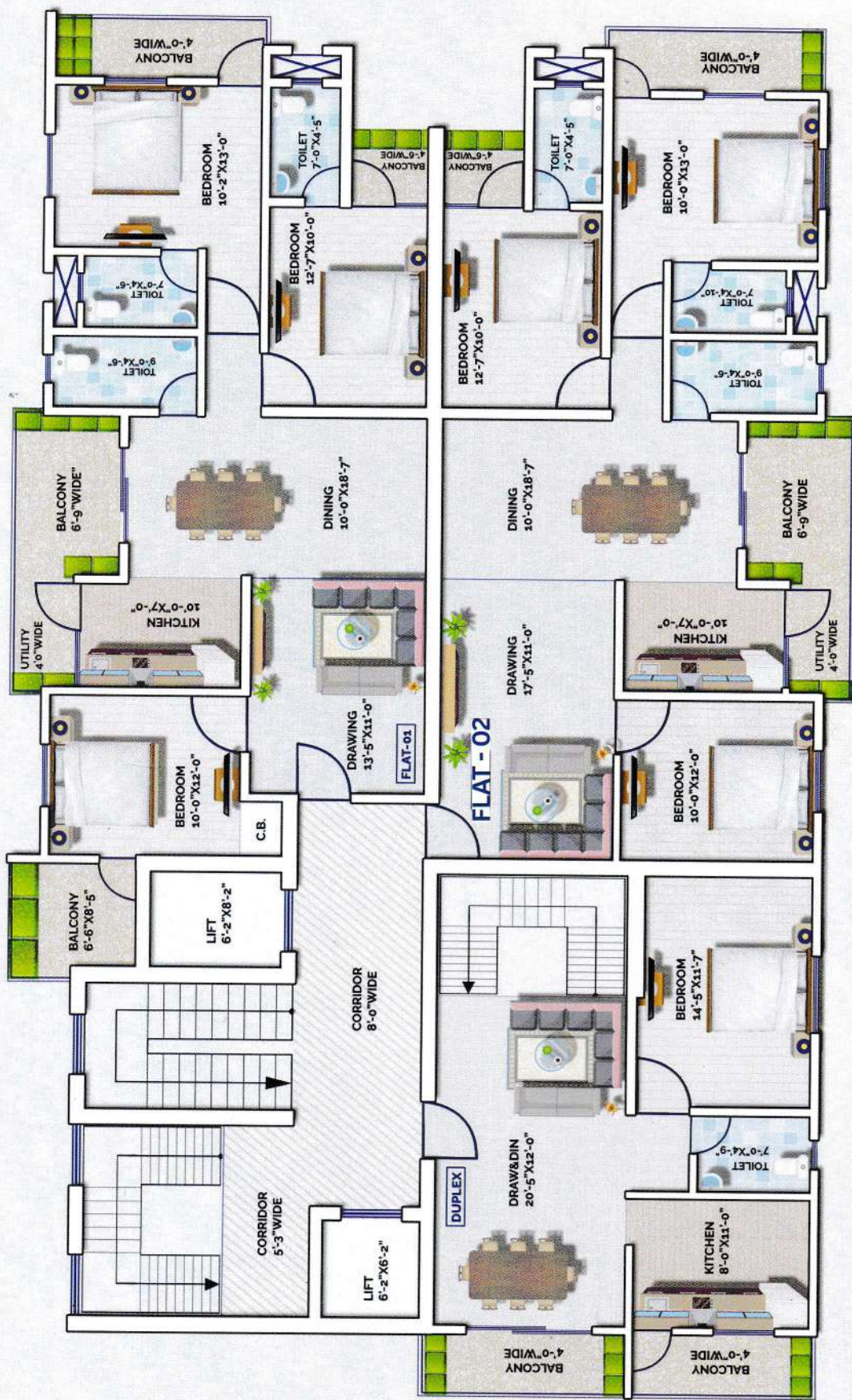
PRIVATE
TERRACE

TERRACE AREA
1249.0 SQ.FT



BLOCK A

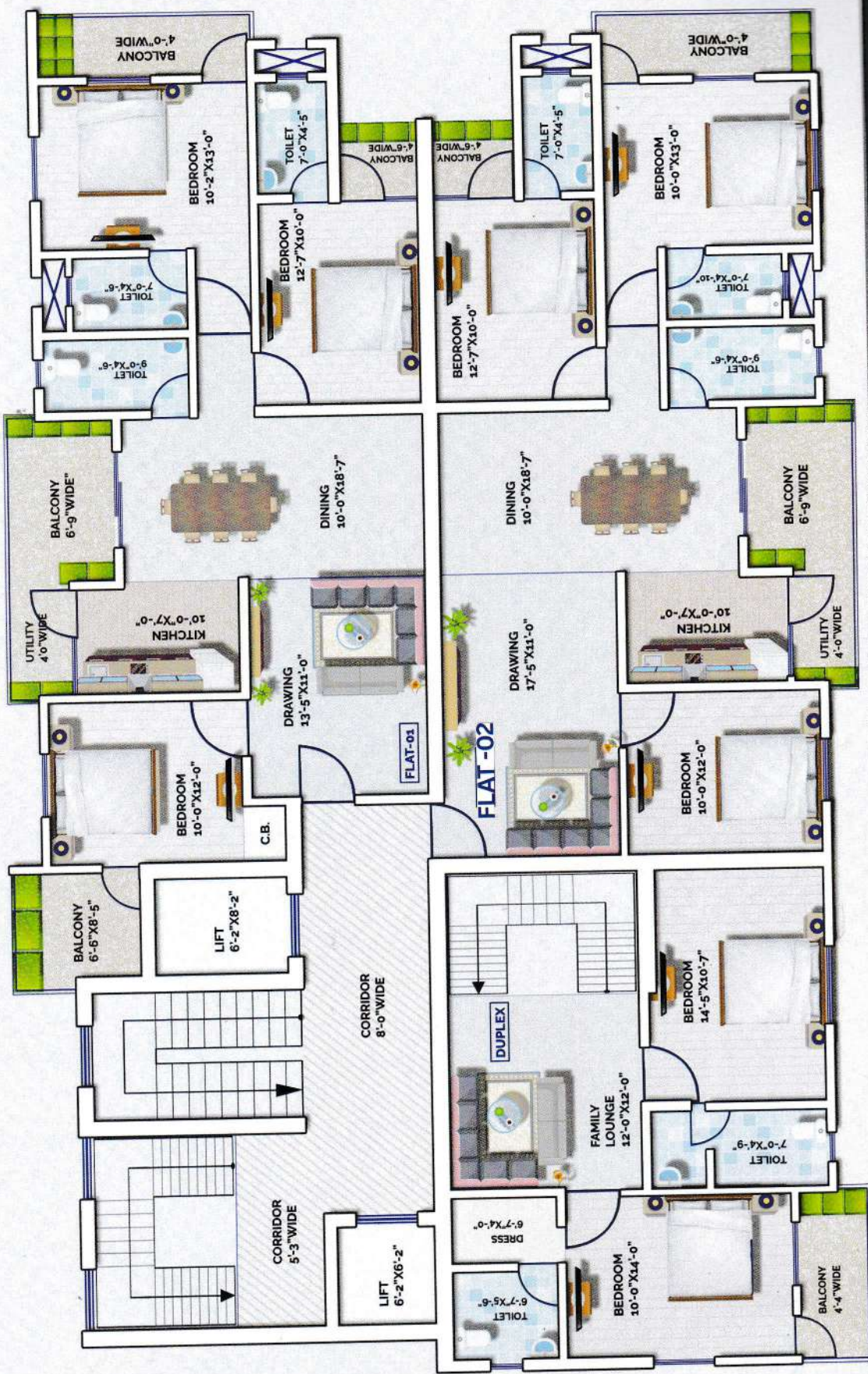
TERRACE FLOOR PLAN G+6



BLOCK B

G+1, G+3, G+5 FLOOR PLAN

FLAT	S.B. AREA	UNIT
01	1519.0 SQ.FT.	3 BHK
02	1484.0 SQ.FT.	3 BHK
DUPLEX	963.0 SQ.FT.	DUPLEX



BLOCK B

G+2, G+4, G+6 FLOOR PLAN

FLAT	S.B. AREA	UNIT
01	1519.0 SQ.FT.	3 BHK
02	1484.0 SQ.FT.	3 BHK
DUPLEX	928.0 SQ.FT.	DUPLEX



PINE RETREAT



Retreat to
Serenity,
Rise to
Elegance

PAYMENT SCHEDULE

Booking Amount

PERCENTAGE

At the time of Booking

15%

On Signing Agreement

20%

15 days before Ground Floor casting

9%

15 days before 1st floor roof casting

9%

15 days before 2nd floor roof casting

9%

15 days before 3rd floor roof casting

9%

15 days before 4th floor roof casting

9%

15 days before 5th floor roof casting

9%

15 days before 6th floor roof casting

9%

15 days before Possession

2%



SPECIFICATIONS

FOUNDATION

RCC (REINFORCED CEMENT CONCRETE) WORK AND PLINTH WILL BE CONSTRUCTED USING CEMENT FROM ULTRATECH, NUVOCO, DALMIA, ACC, OR LAFARGE.

STRUCTURE AND CONSTRUCTION

AS PER THE APPROVED PLAN, THE STRUCTURE WILL BE FRAMED IN RCC, WITH SUFFICIENT STEEL, SAND, AND STONE CHIPS USED.

WALLS

10" (INCH) THICK OUTER BRICK WALLS AND 5" (INCH) THICK INNER PARTITION WALLS WILL BE CONSTRUCTED. IN SOME PLACES AAC BLOCK WALLS MAY ALSO BE USED.

WALL FINISHING

- INNER WALLS AND CEILINGS WILL BE FINISHED WITH WHITE PUTTY (BIRLA, ASIAN, OR EQUIVALENT WALL PUTTY).
- EXTERIOR WALLS WILL BE FINISHED WITH RUSTIC WEATHER COAT PAINT (2 COATS).

FLOORING (TILES)

2x2 VITRIFIED TILES WILL BE LAID WITH A WIDTH OF 4" INCH SKIRTING.

DOORS

- MAIN ENTRANCE DOOR WILL BE A 35MM THICK SOLID WOODEN DOOR.
- INTERNAL DOORS WILL BE WPC (WOOD-PLASTIC COMPOSITE) WITH FLUSH DESIGN.
- FRAMES WILL BE MADE OF SAL WOOD, PAINTED AND POLISHED.
- HARDWARE FITTINGS WILL BE OF REPUTED BRANDS LIKE DORSET, GODREJ, ETC.

WINDOWS

SLIDING WINDOWS WITH UPVC FRAMES.

WATER SUPPLY

- TOILET FITTINGS WILL INCLUDE EUROPEAN COMMODE, ONE WASH BASIN, SHOWER, HOT AND COLD WATER MIXER OF JAGUAR/HINDWARE OR EQUIVALENT BRAND.
- BATHROOMS WILL HAVE CERAMIC TILES UP TO 7 FT HEIGHT ON WALLS, AND ANTI-SKID CERAMIC TILES ON THE FLOOR.

SANITARY FITTINGS

ALL SANITARY FITTINGS WILL BE OF STANDARD MAKE WITH CP (CHROME-PLATED) BRASS FITTINGS.

KITCHEN

- THE WORK PLATFORM WILL BE A BLACK GRANITE SLAB.
- FROM THE PLATFORM SURFACE, CERAMIC TILES ON THE WALL UP TO 2 FEET IN HEIGHT.
- CERAMIC TILES ON THE FLOOR.

ELECTRICAL FITTINGS

- CONCEALED COPPER WIRING (HAVELLS/ANCHOR OR EQUIVALENT).
- MODULAR SWITCHES OF STANDARD MAKE.

CCTV CAMERA

- CCTV CAMERAS WILL BE INSTALLED FOR SAFETY AND SECURITY.

Developer:



Solanaki Road No 4, Hatia, Ranchi,
Jharkhand - 834004

+91 74610 10888

dsconstruction150@gmail.com

LOCATION MAP



Solanaki Chowk

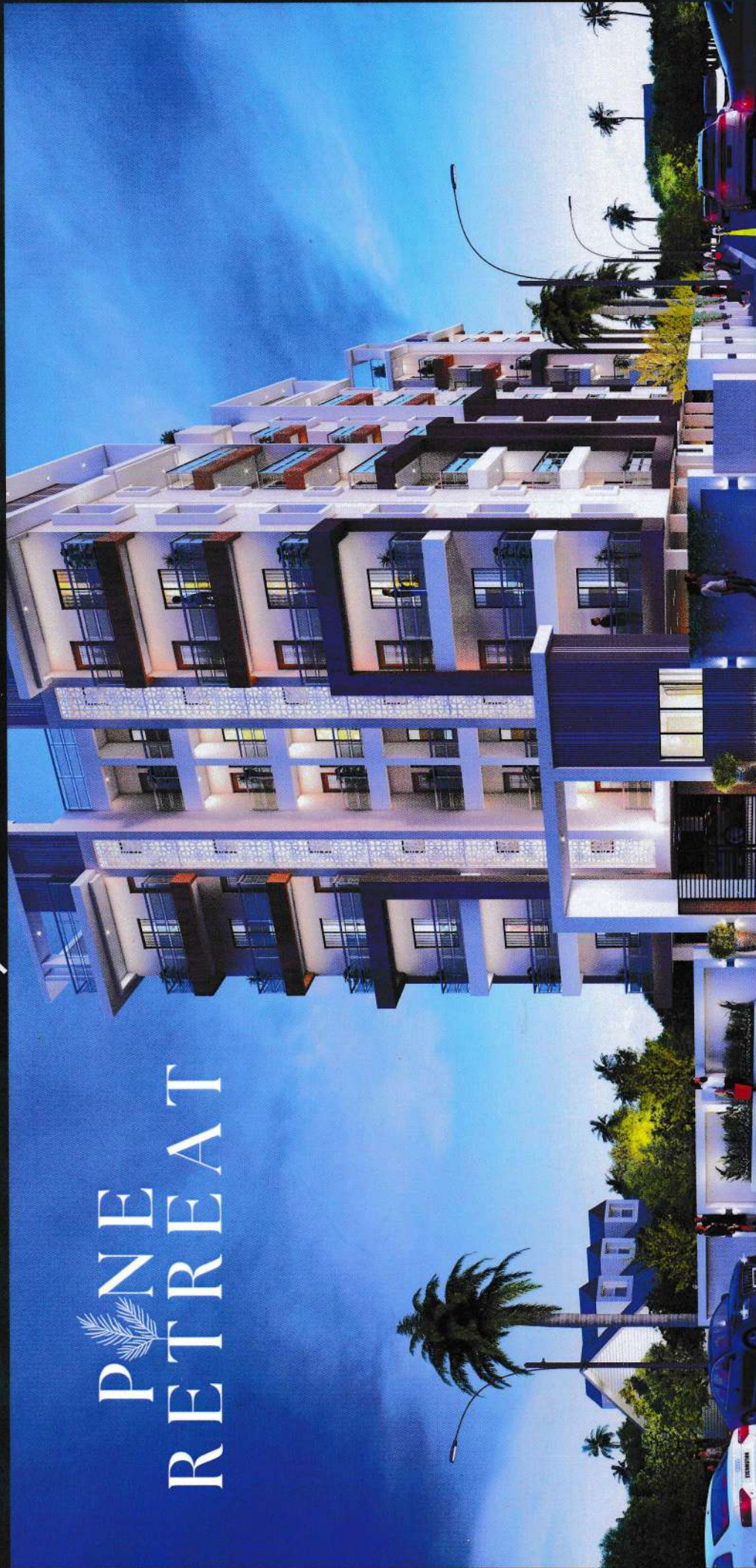
Singh More

Bank of India

Towards
Khunti

RESIDENTIAL
SITE

PNEAT RETREAT



- 10 mins from Airport
- 5 mins from Hatia Railway Station
- 5 mins from JSCA Stadium
- Walking Distance from Hospital
- Walking Distance from Khunti Road

Note: This brochure is for illustration only. Plans, layouts, and specifications may change. Furniture and accessories shown are indicative and not part of the offer.

Designed and Printed by Zura Technologies,
Ranchi - 834003