

LOCATION ADVANTAGE:



SCAN ME

Developers Name:

A Project by :



Avalon Builders

Email: avalonbuilders9@gmail.com

Contact: +91 95120 03030

Structural Engineer

SHREEJI STRUCTURALS
Mr. Ketav Joshi

Architect

B17 Architects
Besides Divya Bhaskar Press Road,
Corporate Road, Makarba, Ahmedabad.

Site Office

Avalon Sundarvan, Near D.P.S school,
Canal Road, B/H ISRO CAMPUS BOPAL,
Ghuma, Ahmedabad, Gujarat - 380058

RERA Website: gujrera.gujarat.gov.in

RERA No.:

D&P By: BRANDZ | 78780 96880



**A CALM PLACE TO
CALL HOME**



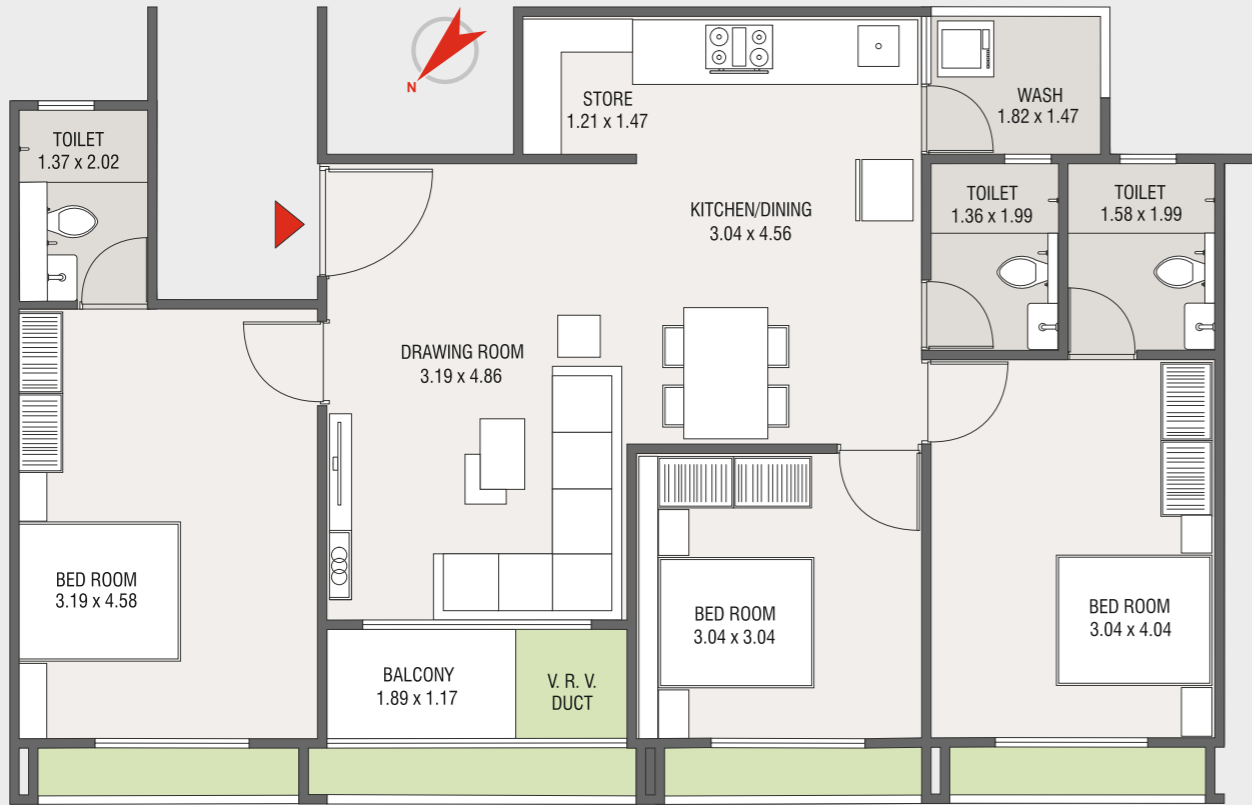
HOMES DESIGNED FOR CALM LIVING

Life already has enough noise, pressure, and rushing around. Your home shouldn't add to it.

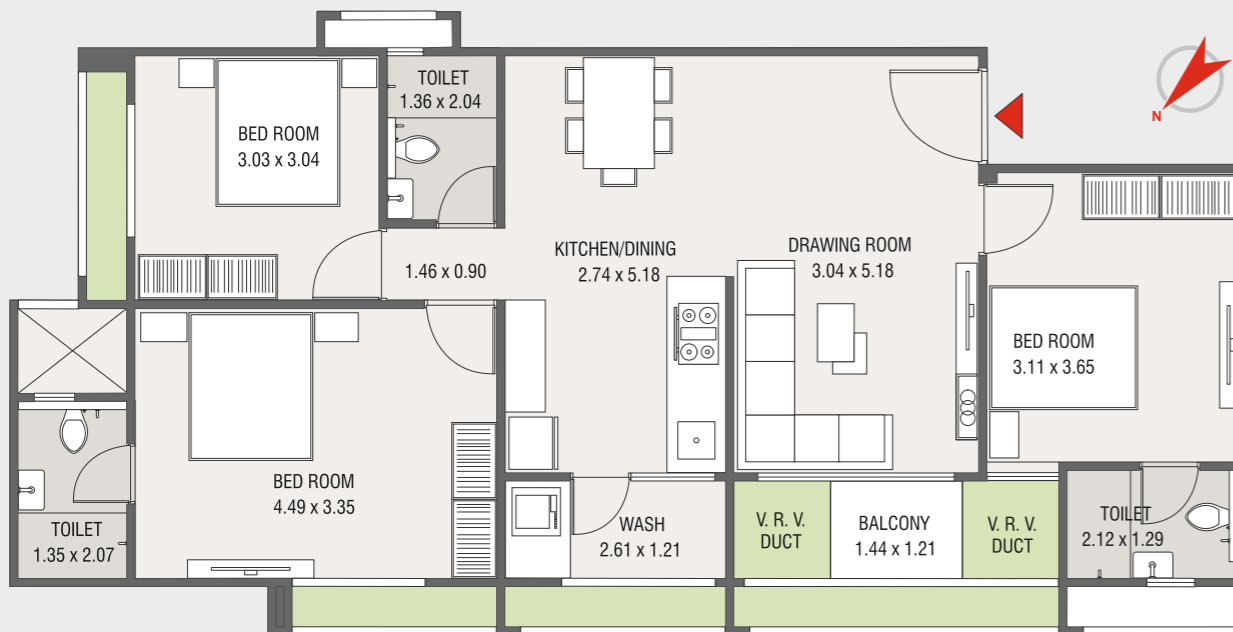
A calm, well-planned living environment that supports daily life without stretching your budget.



3 BHK UNIT PLAN - TYPE A



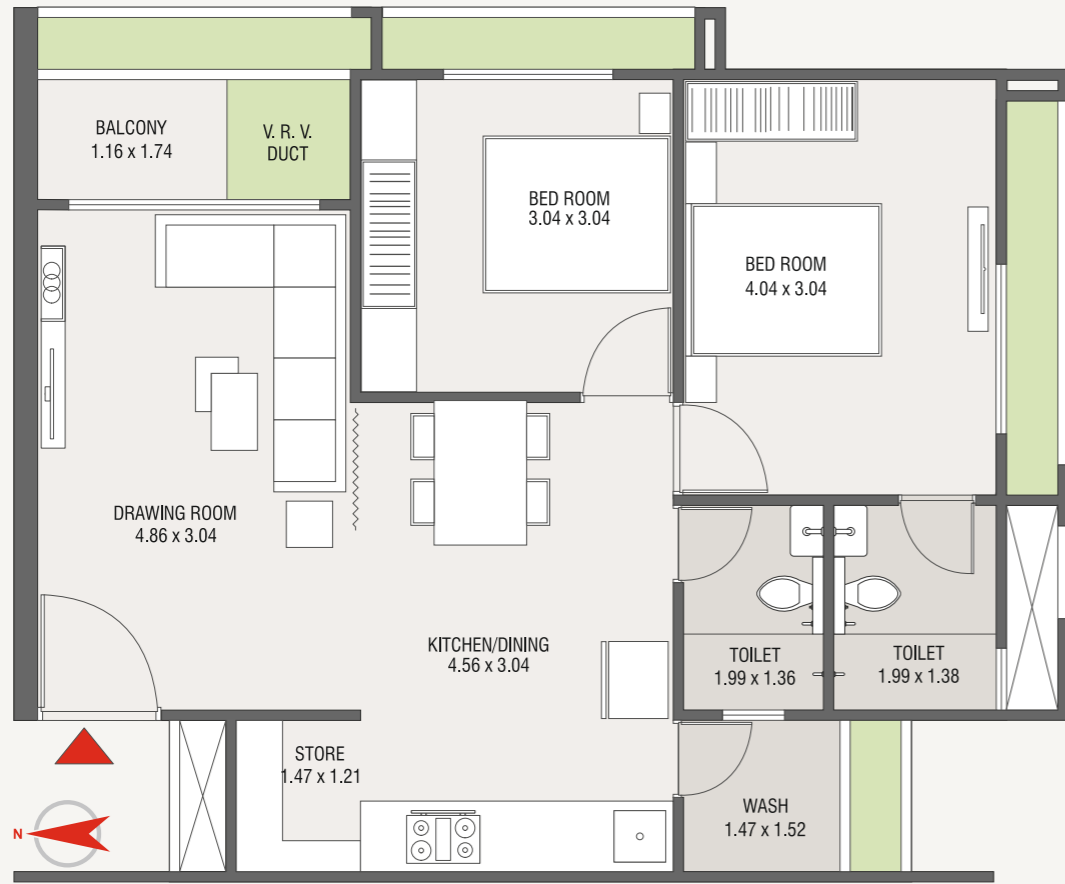
3 BHK UNIT PLAN - TYPE B



3 BHK UNIT PLAN - TYPE C



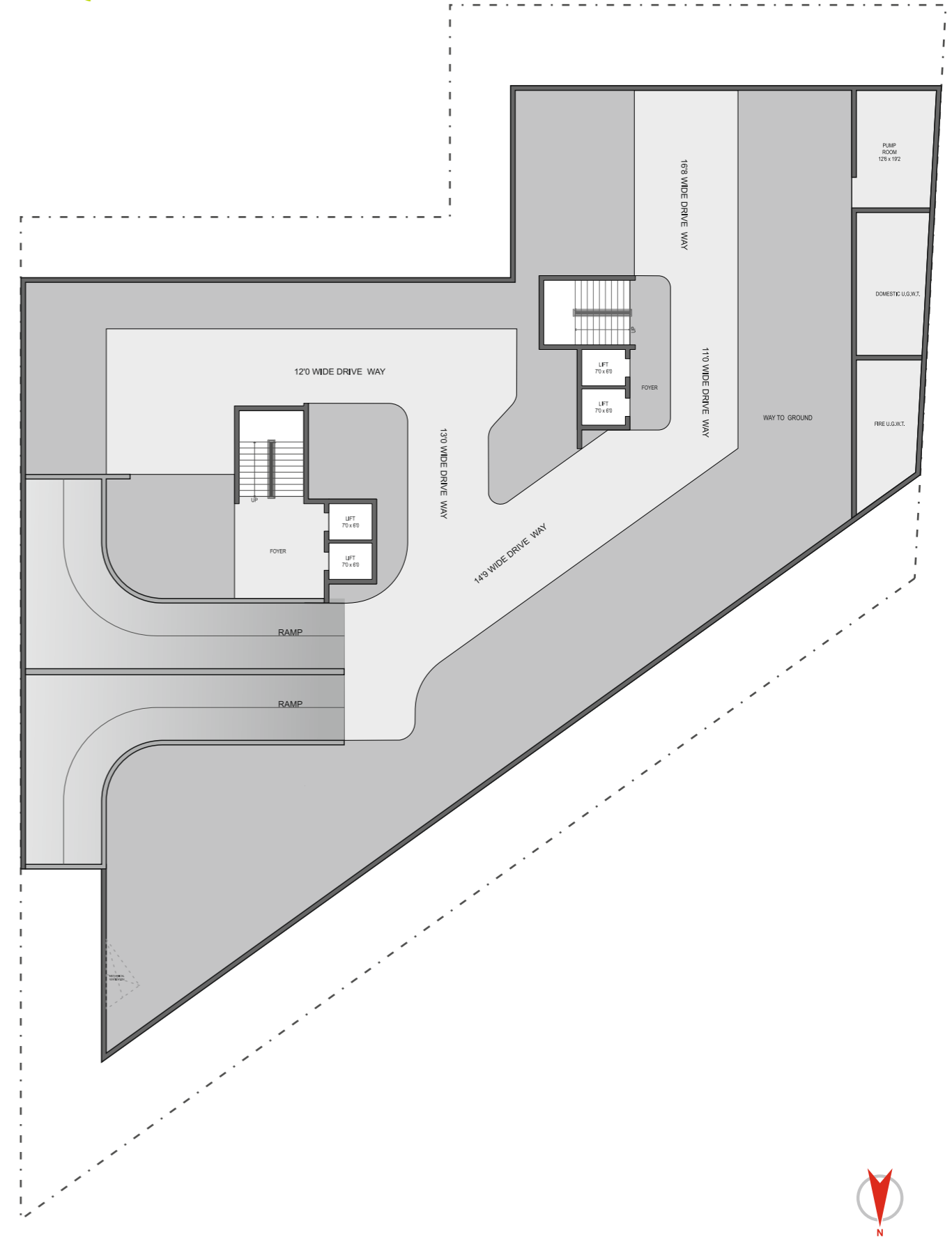
2 BHK UNIT PLAN - TYPE B



2 BHK UNIT PLAN - TYPE A




BASEMENT PLAN








AMENITIES

 TERRACE GARDEN

 24 HOUR WATER

 ATTRACTIVE ENTRANCE FOYER

 PARKING

 2 LIFT

 SENIOR CITIZEN SIT OUTS

 FIRE SAFETY

 CCTV CAMERA

Disclaimer: • All statutory charges including GST, GEB, stamp duty, registration charges, legal expenses, and any other Government levies as applicable shall be borne by the member. Any additional liabilities arising due to changes in Government rules, regulations, notifications, taxes, or laws shall be payable by the member. • All rights are reserved by developers to make any changes in plan, Scheme elevation, dimensions and other details there in to comply with statutory regulation and shall be binding to all the members. • All dimensions/ area are approximate/ average & subject to variations. • This brochure is not a part of legal document but only for easy presentation to customers. All payments shall be made in favour of "Avalon Builders". • Subject to Ahmedabad jurisdiction only.

SPECIFICATION

Building Structure

- RCC frame structure with block masonry

Wall Finish & Colour Works

- Double coat mala plaster on external wall with good quality exterior paint
- Single coat mala plaster on internal walls with putty finish

Flooring & Tiles

- Good quality vitrified tiles in the entire apartment
- Mirror polished indian granite platform and tiles dedo in kitchen up to lintel level
- Flooring tiles in wash area
- Good quality ceramic tiles flooring and designer tiles dedo in all bathrooms

CP Fitting and Sanitary ware

- Good quality plumbing fittings like finolex or equivalent
- Good quality sanitary ware like cera or equivalent
- S. S. sink in kitchen

Doors & Windows

- Decorative laminated main entrance door with good quality lock-set
- Internal flush doors with granite seal
- Anodized aluminum sliding window with granite germs

Electrification

- Single phase concealed conduits with copper wiring of standard ISI brand
- Provision of adequate number of power outlets with good quality modular switches in all areas
- Protective MCB & ELCB for each apartment

General

- Bore well for 24 X 7 water supply
- CCTV surveillance in common area
- Attractive entrance foyer
- China mosaic on terrace
- Parking space



COMING SOON

COMING SOON

COMING SOON

COMING SOON

COMING SOON

COMING SOON

COMING SOON

COMING SOON

COMING SOON

COMING SOON

COMING SOON

COMING SOON