



ekatva

ONE DOOR, MANY HOMES



— BY AXIS LIFE SPACES —

Reliability You Can Build On

Axis Concept Construction Pvt. Ltd. has spent over two decades building with a belief that business can be both socially and environmentally responsible. Over the years, this philosophy has evolved into a commitment to creating sustainable enterprises with specific social and environmental goals. With a strong foundation built on Trust, Quality, and Innovation, Axis Concept has established itself as a leader in real estate development in Bangalore.

Offering state-of-the-art residential and commercial projects, The company has successfully completed over 50 projects and satisfied over 3000 customers.. Every Axis Concept project reflects excellence, superior craftsmanship, and modern living solutions designed to enhance the urban lifestyle.

50+
COMPLETED
PROJECTS

0%
DELAYED
DELIVERIES

90%
CUSTOMER
RETENTION

2M+ SQFT
BUILT

25+ YEAR
LEGACY

3000+
HAPPY
CUSTOMERS





ekatva

ONE DOOR, MANY HOMES

— BY AXIS LIFE SPACES —

Where one entrance opens up a world of possibilities.

In the heart of Bengaluru's buzzing rhythm, Ekatva invites you into a place where life feels lighter, connections feel natural, and every door leads to something meaningful.

Step inside, and you'll find more than just a 1-BHK smart studio — you'll find many homes within a single space: a home to rest, a home to work, a home to grow, a home to belong.

Ekatva brings together the privacy you need and the shared experiences you'll love, creating a living environment where independence meets community, seamlessly.

Here, modern design becomes a backdrop for everyday stories. Thoughtful spaces become extensions of your lifestyle. And one door becomes the gateway to many homes.

A place to belong

Designed to balance private spaces and shared environments. Every movement within the campus is intuitive and effortless.

RESIDENTIAL BLOCK | COMMUNITY AMENITIES
LANDSCAPE & OUTDOOR SPACES | ACCESS &
SECURITY POINTS



Make time for conversations, coffee, golden evenings.



Designed with Intention — For People and the Planet



Every detail of Ekatva is built with care: smart planning, sustainable choices, and amenities that support real living.



Amenities

Access point

- Commercial building for businesses – Banks/ Grocery stores/ Offices
- Double height entry porch
- Reception & Lobby

Outdoor Amenities

- Open air theatre
- Amphitheater
- Bio pond with seating
- Lush Perimeter Greenery

Indoor Amenities

- Kitchen
- Dedicated Serving zone & Handwash area
- Enclosed Dining Area
- Open dining area
- Drinking water Kiosk



Amenities

Indoor gaming zone

- Board games–Carrom/Chess
- Table Tennis
- Billiards
- Foosball

Fitness Hub

- Indoor Gym
- Outdoor Gym

The Work & Learn Zone

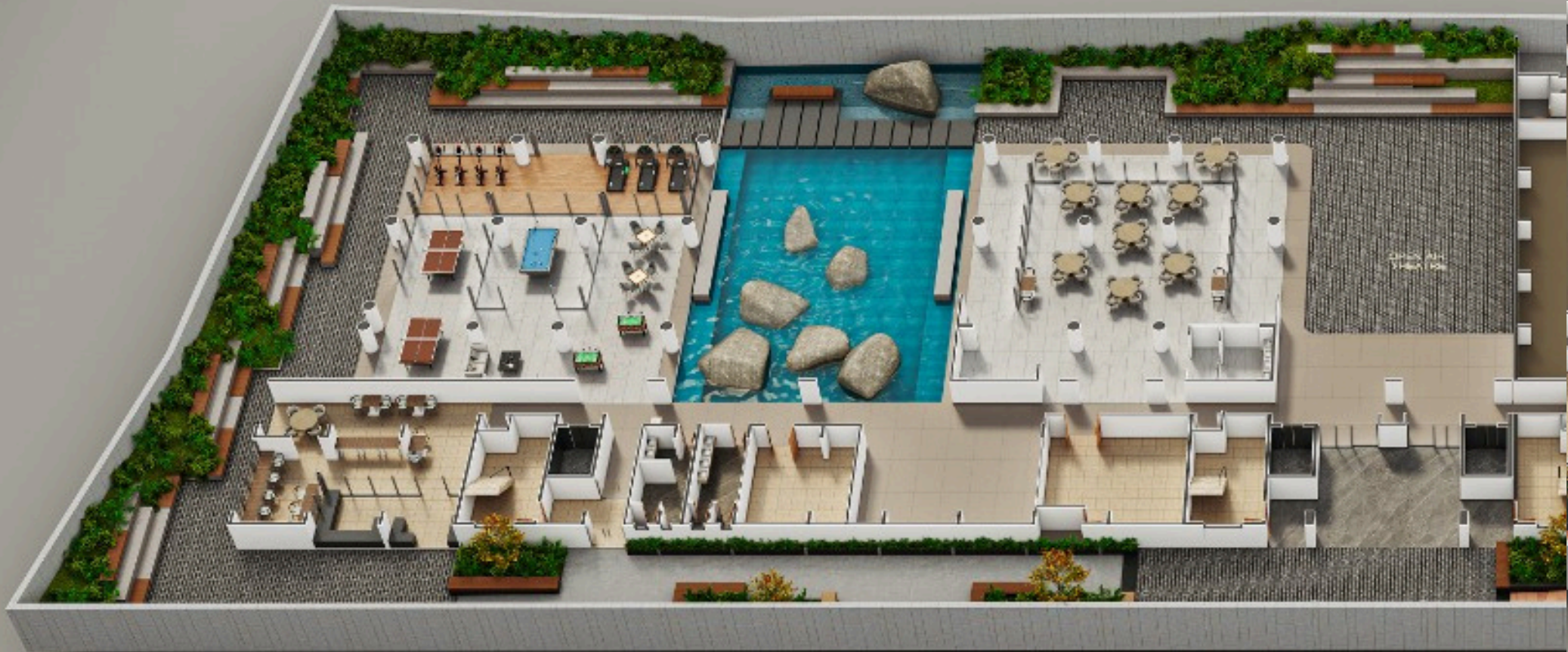
- Library
- Discussion room
- Solo work Zones

Facilities

- DG • STP • Rainwater harvesting & recharge • RO • Store rooms
- Drivers/ workers – Restrooms • Operator office room • Janitor rooms



Master Plan



Created to balance independence with interaction, each element of the layout encourages quiet living with effortless access to shared zones.



Ground Floor Plan





Typical Floor Plan 1st to 4th Floor



Each floor is structured to foster quiet living with thoughtful access to shared spaces.



Typical Unit Plan

Designed to balance
private spaces and
shared environments



Typical Unit Plan

Thoughtful design,
future-ready spaces,
and environments that
feel like home.









Belonging, in Every Corner

Across the campus, you'll find spaces that feel welcoming and alive:

Entrance Plaza

Arrival Court

Water Features

Multipurpose Court

Wellness Zone

Amphitheater

Each space is designed to feel like another "home" within Ekatva.

Construction & Finish Details

STRUCTURE

- RCC framed structure for stability
- Solid concrete / AAC block walls
- Reinforced terrace with waterproofing

DOORS & WINDOWS

- Hardwood room door with premium hardware
- WPC toilet doors with edge protection
- UPVC sliding windows with mosquito mesh
- UPVC toilet ventilators with exhaust provision

& FINISHES

- Vitrified tile flooring in living & rooms
- Anti-skid tiles in bathrooms
- Granite finish staircase flooring
- Smooth internal plaster with premium emulsion paint
- Weather-resistant external paint finish

ELECTRICAL & POWER

- Fire-safe wiring of reputed make
- Modular switches throughout
- Split AC provision in rooms
- BESCOM power allocation per unit
- 100% backup for common areas & lifts

SANITARY & PLUMBING • Branded sanitaryware & CP fittings

- Concealed flush tank EWC
- Provision for geyser & exhaust
- CPVC water supply lines & PVC drainage
- Softened water system
- Rainwater harvesting + STP with reuse for landscaping

PANTRY

- Provision for microwave / induction unit

LIFTS & SAFETY

- Passenger & service lifts with AMC support
- Auto-rescue device + V3F energy efficiency
- CCTV surveillance at main access points

AMENITIES

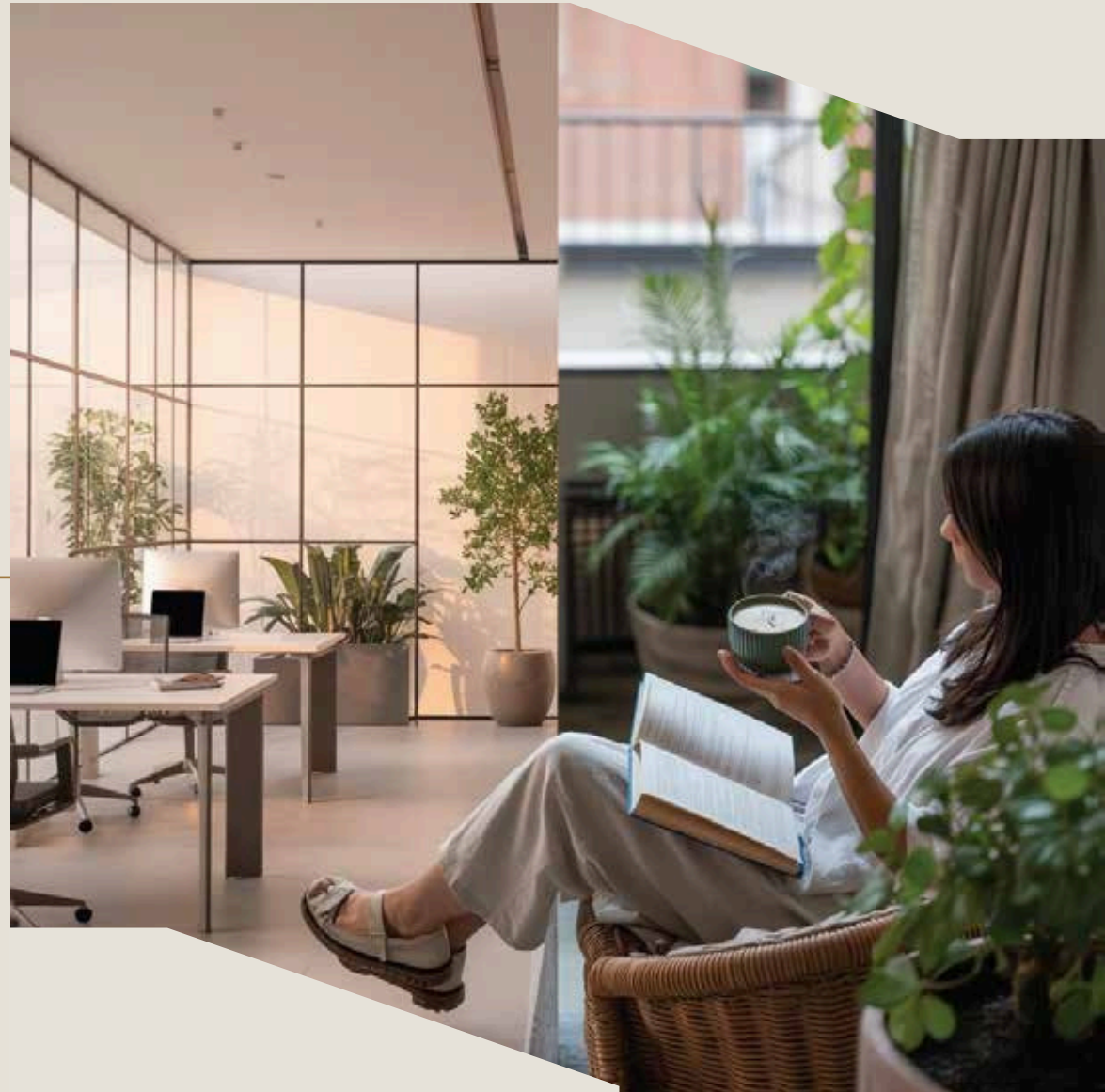
- Landscaped outdoor zones
- Dining & community hall
- Wellness & fitness areas
- Water feature & arrival plaza
- Amphitheater seating
- Multipurpose activity court

Built with the reliability of Axis Life Space, Ekatva offers quality that lasts and design that grows with your lifestyle.



Close to Work. Close to Life.

Everything you need is just around
the bend the essentials, the
conveniences, the city's energy.





Click of scan
for location map



Important Landmarks

Hospitals

Manipal Hospital	- 3.4 kms
Narayana Multispecialty Hospital	- 2.4kms
Vydehi Hospital	- 4.1kms
Shankara Eye Hospital	- 5.9 kms
Yashomathi Hospital	- 7.9 kms
Cloudnine Hospital	- 2.5 km

Schools

VIBGYOR	- 2.8 km
MVJ College of Engineering	- 2.8 km
The Deen's Academy	- 550 m
Delhi public school	- 8.2 km
National Public School	- 5.6 km
Ryan International School	- 7.5 km

Shopping Malls

Park Square	- 2.0 km
Forum value	- 3.9km
Inorbit	- 1.9 km
Pheonix market city	- 6.5 km
VR mall	- 6.5 km

Hotels

Marriott International	- 4.3 km
Sheraton grand	- 2.9 km
The Den	- 2.1 km
Taj Vivanta	- 2.2 km
The Zuri	- 3.5 km

Offices

ITPB	- 2.7 km
GR tech park	- 800 m
Kalyani Techpark	- 14 min
SCB Brigade techpark	- 3 min
Goyal & Co Titanium Tech park	- 1.0 km
Divyasree techpark	- 4.2 km
Prestige Shantiniketan	- 2.8 km
Brigade Metropolis	- 8.2 km
Novo Nordisk	- 4.1km
TCS	- 2.1 km
Accenture	- 3.7 km
SAP	- 4.6 km
RMZ Eco Space	- 12.4 km
Capgemini	- 4.3 km
Harman International	- 3.8 km

Approvals

RERA APPROVED-21/11/2025
Karnataka Real Estate Regulatory Authority No.
PRM/KA/RERA/1251/446/PR/021225/008298

BBMP Licence APPROVED-24/10/25
No. BBMP/Addl.Dir/JDNORTH/0017/25-26 & PRJ/2155/25-26

BWSSB APPROVED-30/05/25
Bangalore Water Supply and Sewerage Board
No. BWSSB-NOC-2025-3-107-031205535570

KSPCB APPROVED-19/04/25
Karnataka State Pollution Control Board
No. CTE-348474

BESCOM APPROVED-26/03/25
Bangalore Electricity Supply Company Limited
No. ಅಇಂ(ವಿ)/ಬೆಂಪೂವ್ಯ/ಕಾನಿಇಂ(ಕ)/ಸಕಾಇಂ(ಕ)-2/F-154/24-25/8977-78





Ekatva is a feeling you return to every day —
one door that opens into many homes, many moments,
and many ways to belong



in partnership with



No. 555, Axis Padegal,
4th Floor, 9th Cross Road,
J P Nagar, 3rd Phase, Near Sony Center,
Bengaluru, Karnataka - 560078

www.axisconcept.in
sales@axisconcept.in
+91 72591 80002