



A LIVING  
INSPIRED BY DUBAI  
HAS ARRIVED!

DUBAI,  
THE 'PEARL OF THE GULF',  
A DREAM OF MANY.





An international skyline adorned by incredible engineering marvels,  
such as the Burj Khalifa, makes Dubai a truly global city.  
It has charmed the global citizens with its unique experience,  
underlining its distinguished living.  
It is one of the most sought-after destinations among home-seekers and  
the business community.



# WELCOME TO A DUBAI-LIKE ICONIC LIFE IN KONDHWA

Imagine a lifestyle shaped by one of the most esteemed cities of the world – Dubai. The city, often referred to as the 'Pearl of the Gulf', offers a dream living with great amenities, luxury and opulence. Influenced by the same high standard of living, TRU Realty presents, TRU Meadows, an iconic lifestyle that will change the skyline of Kondhwa.



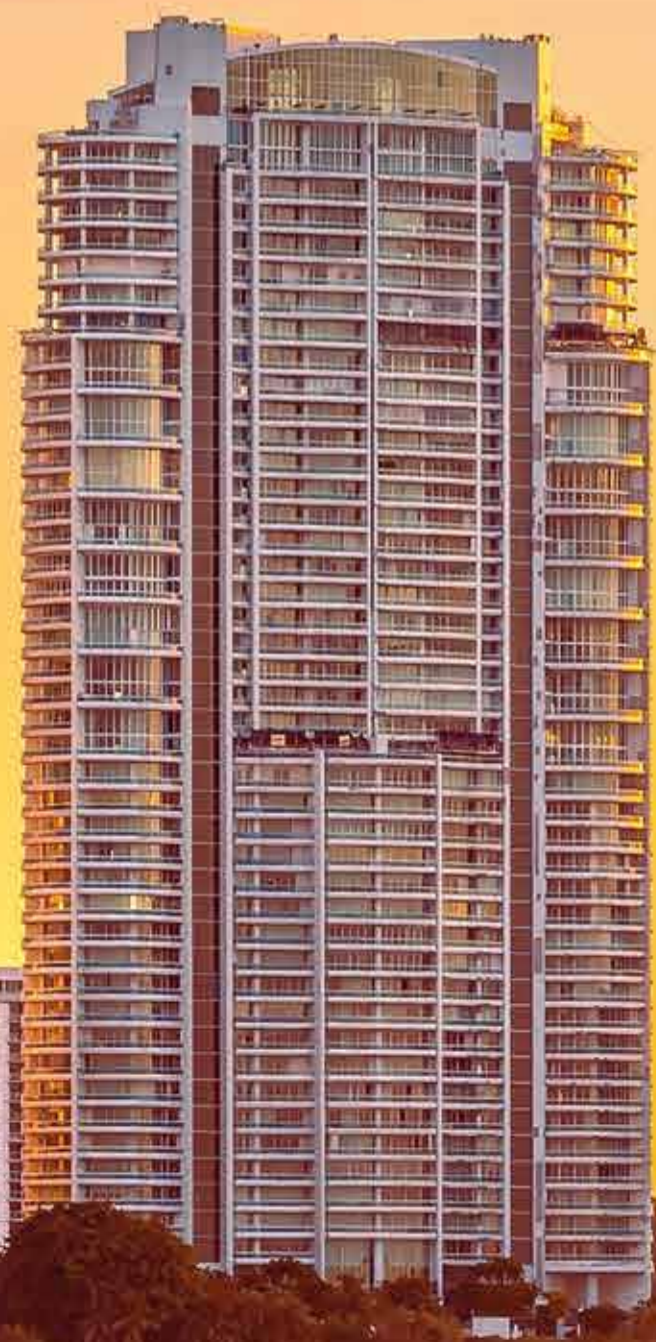
# KONDHWA – AN EMERGING RESIDENTIAL DESTINATION

When an area develops, its value also grows invariably.

Kondhwa is one such area with a promising tomorrow.

It scores on 2 aspects, both physical and social infrastructure.

Be it roads, public transit, water supply, education centres, healthcare facilities, or shopping centres and more, make a convenient living in Kondhwa.

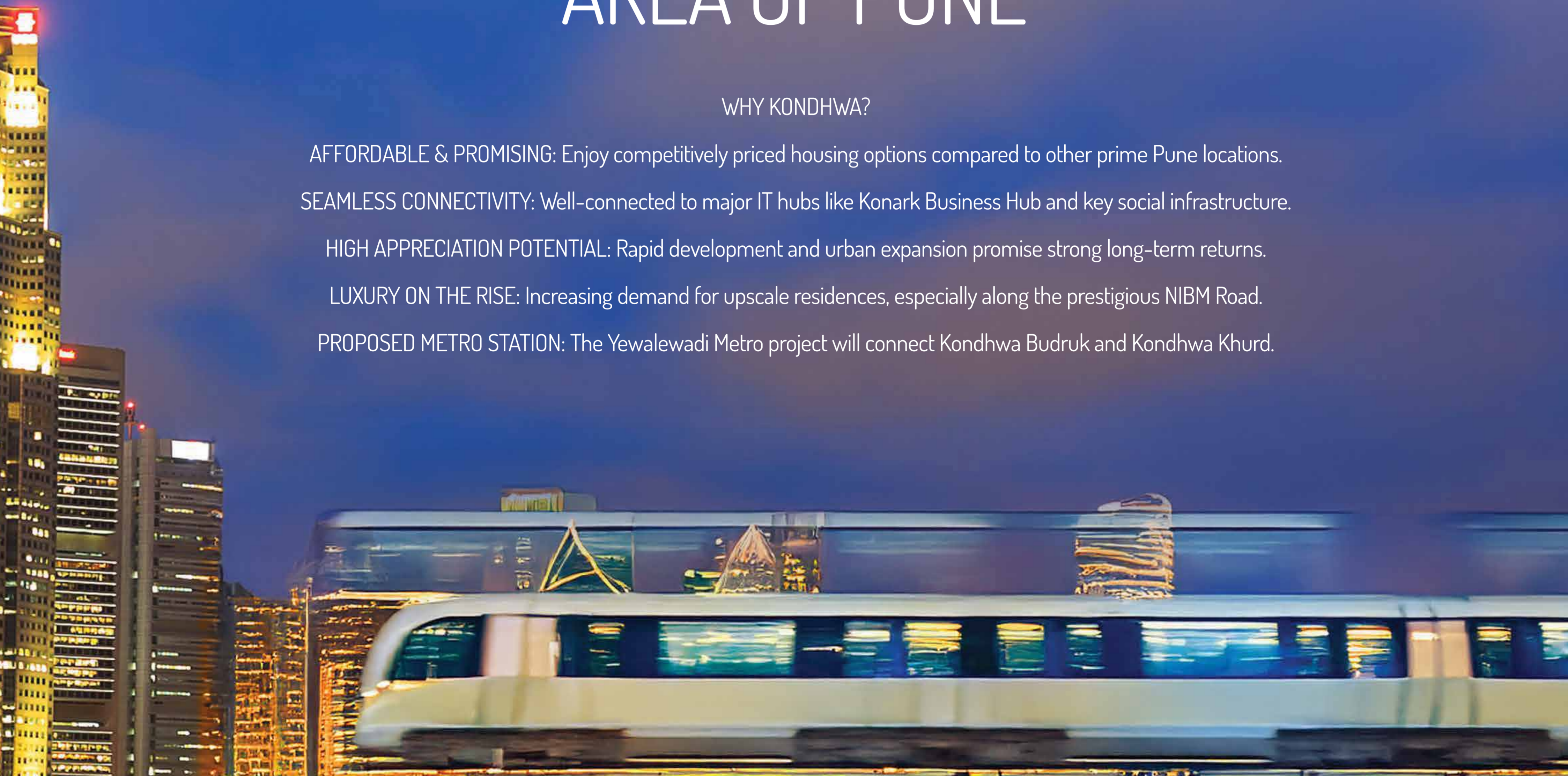




# INVEST IN THE PROMISING AREA OF PUNE

## WHY KONDHWA?

- AFFORDABLE & PROMISING: Enjoy competitively priced housing options compared to other prime Pune locations.
- SEAMLESS CONNECTIVITY: Well-connected to major IT hubs like Konark Business Hub and key social infrastructure.
- HIGH APPRECIATION POTENTIAL: Rapid development and urban expansion promise strong long-term returns.
- LUXURY ON THE RISE: Increasing demand for upscale residences, especially along the prestigious NIBM Road.
- PROPOSED METRO STATION: The Yewalewadi Metro project will connect Kondhwa Budruk and Kondhwa Khurd.





D

C

B

A

# EXPERIENCE GLOBAL LIVING AT TRU MEADOWS

Welcome to TRU Meadows – where the elegant Dubai-inspired design blends with everyday comfort in the heart of Kondhwa. Spread across 2.75 acres, this premium township features four thoughtfully designed towers offering spacious 2 & 3 BHK residences. Enjoy high living with well-appointed homes, high-quality finishes, and exclusive lifestyle amenities including a luxurious clubhouse, a serene pool, and separate gyms for men and women.

At TRU Meadows, you don't just buy a home — you choose a global lifestyle.





# UNWIND ELEGANTLY AND LEISURELY

TRU Meadows offers a majestic lifestyle with secured homes, a private pool area, and a clubhouse packed with world-class amenities. Choose from lifestyle amenities – all designed to ensure comfort, privacy, and an elevated experience. So get ready to enjoy leisure time with your loved ones and make the most of your family time.

Swimming Pool





Outdoor Gym



Barbeque



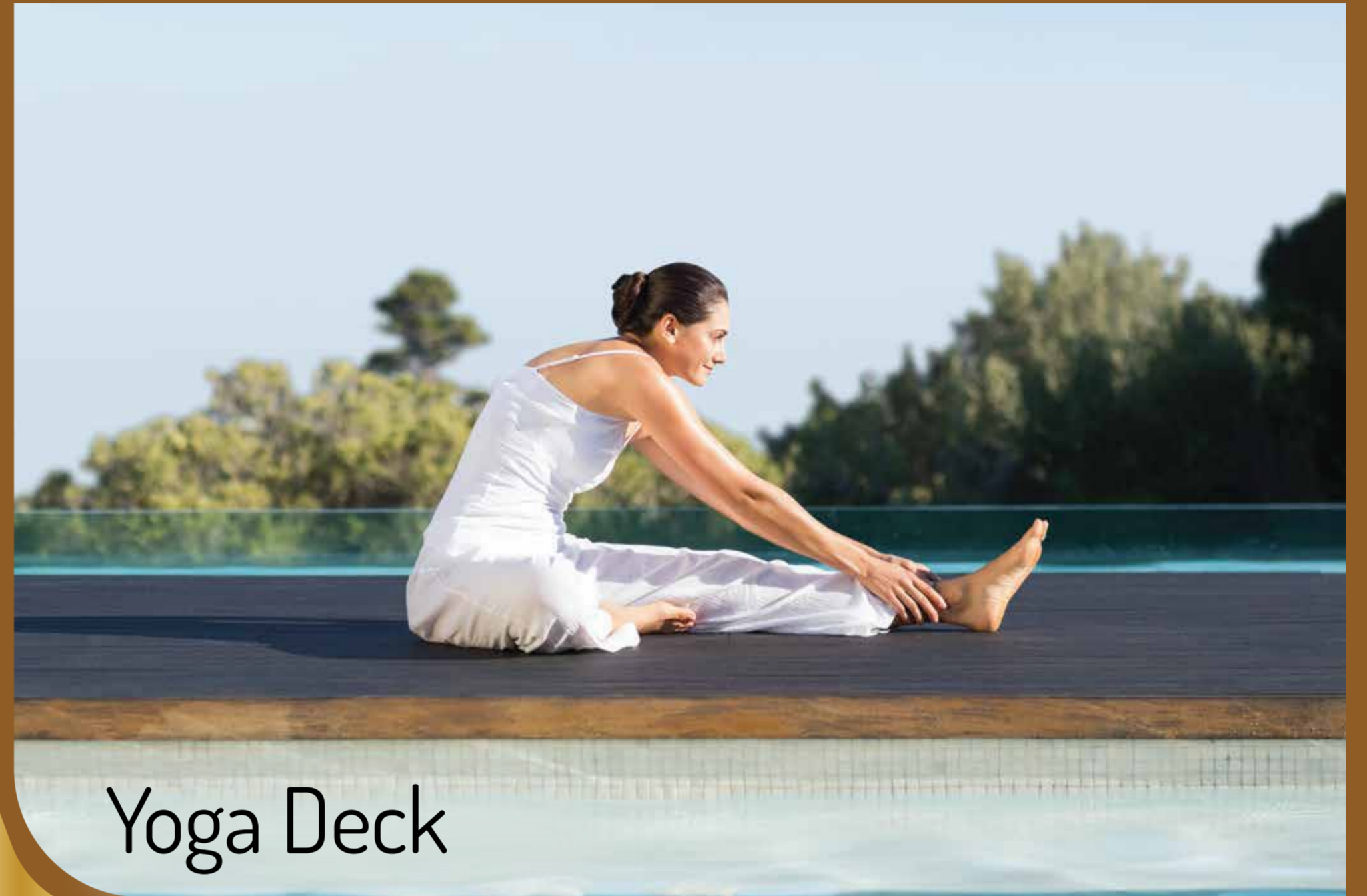
Amphitheatres



Party Lawn



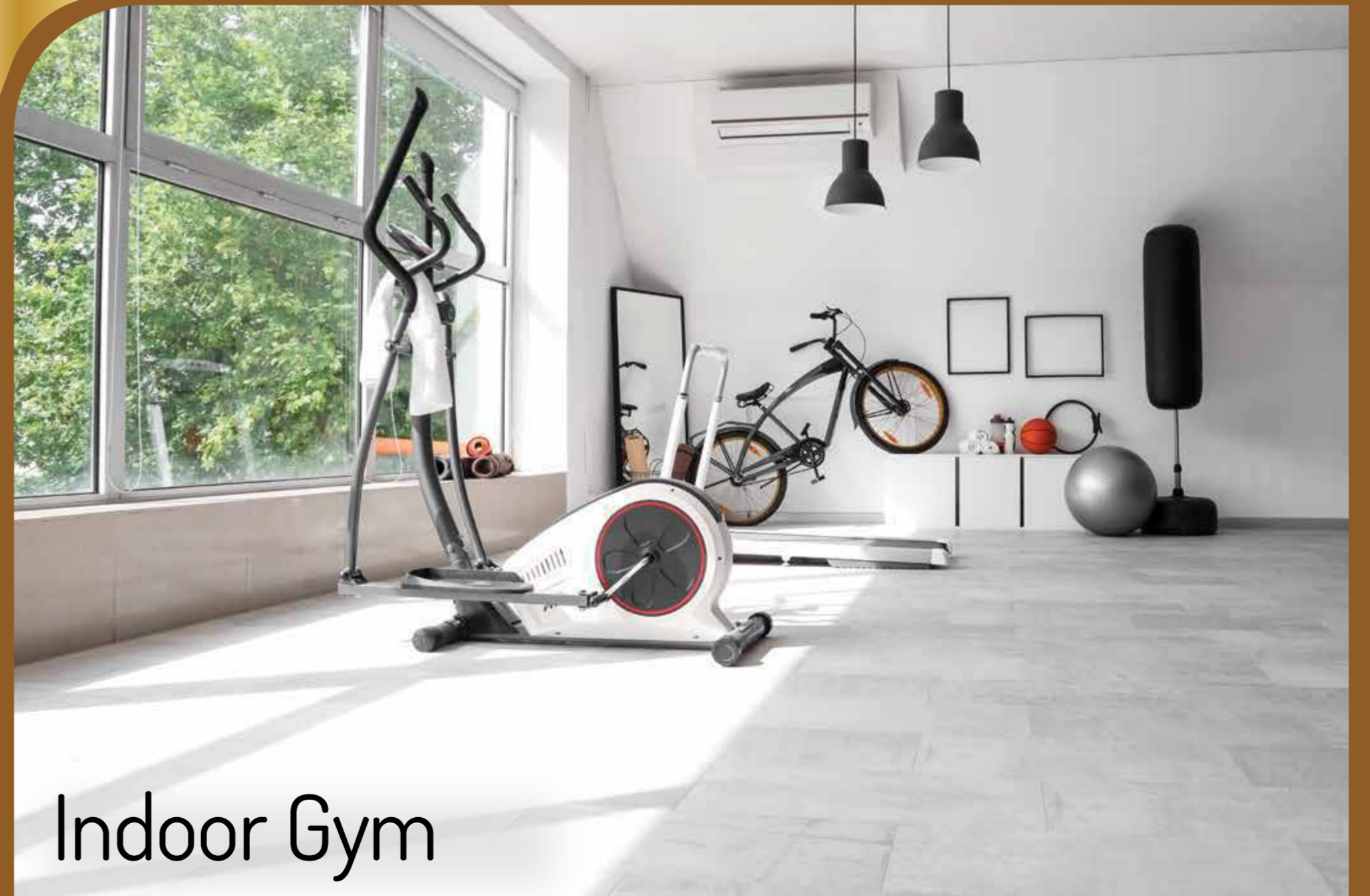
Multipurpose Hall



Yoga Deck



Smart Security



Indoor Gym



Kids Pool



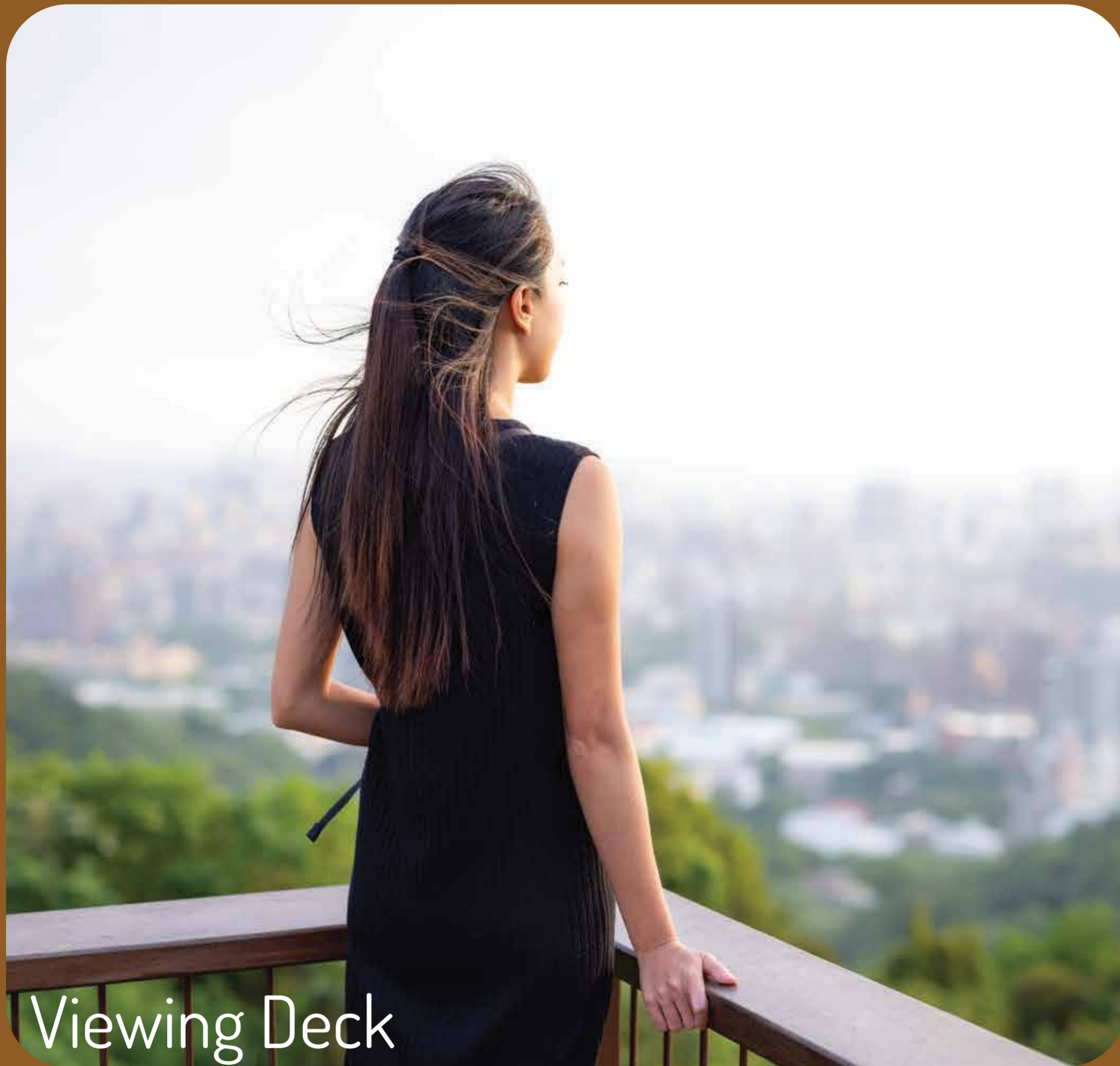
Toddlers Play Area



Club House



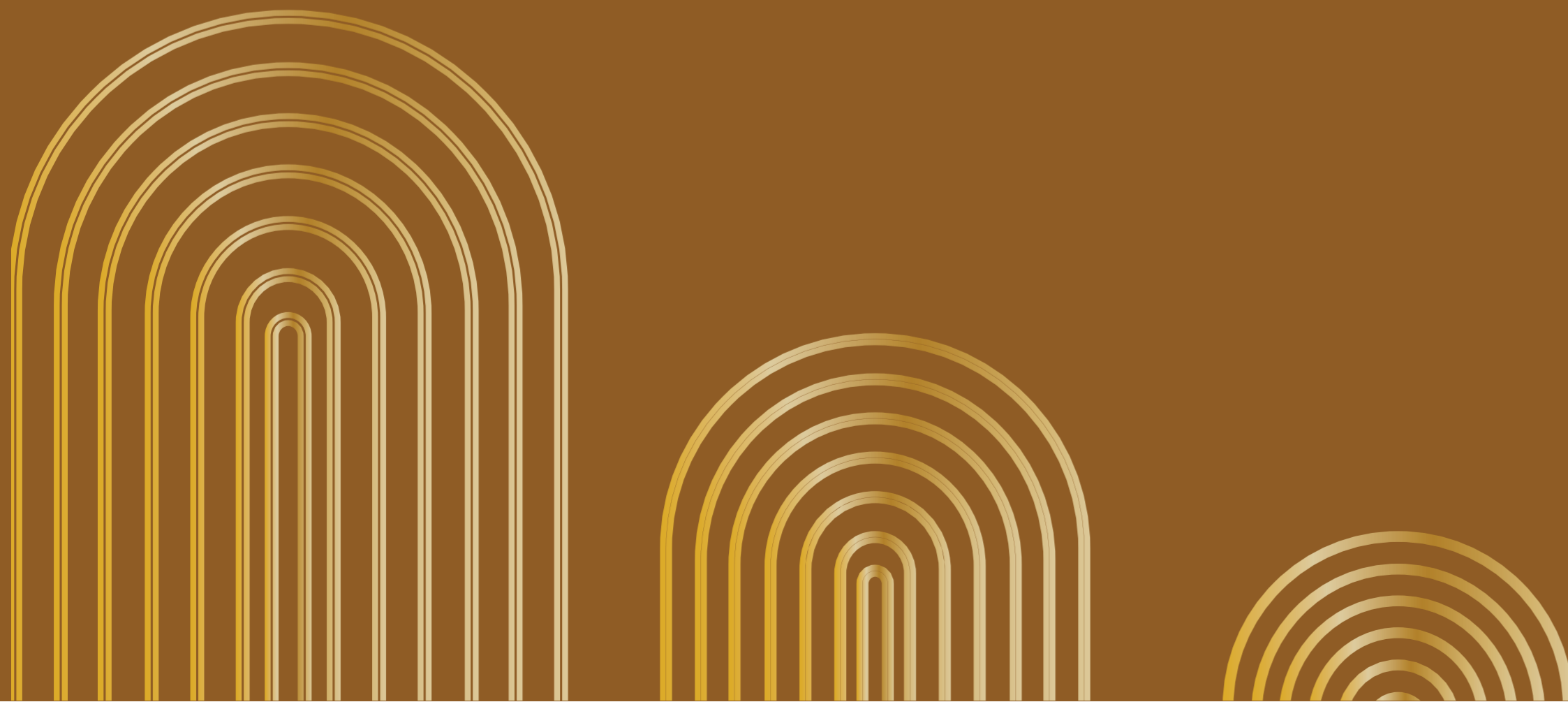
Wellness Zones



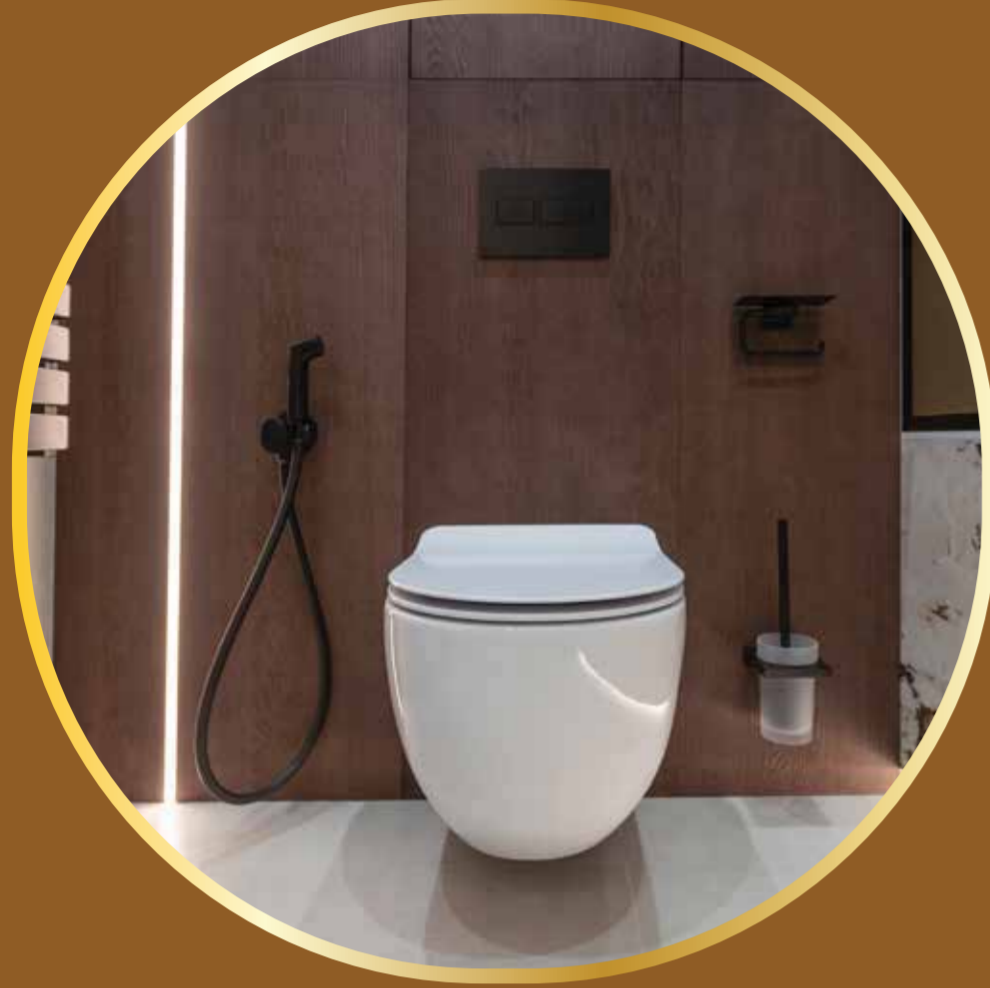
Viewing Deck



Kids Play Area



# PROJECT SPECIFICATIONS



## Toilets

- CPVC Concealed plumbing
- American Standard/ Jaguar/ equivalent sanitary with fittings
- CP fittings- American Standard/ Jaguar / Equivalent
- Hot & Cold - water Mixer
- Provision for Geyser Points in the Common & Master Bathroom
- Solar water Connection in the Master Toilet
- Exhaust Fan provision for all bathrooms



## Walls

- External & internal walls in AAC Blocks
- External Sand Faced Cement Plaster;
- External Acrylic Paint Apex or Equivalent
- Internal walls Gypsum Plaster
- All Apartment ceilings with Gypsum finish
- OBD paint internal



## Windows

- 3 Track powder-coated Aluminium windows with Mosquito mesh
- All windows with Granite sills



## Electrical

- Provision for inverter backup;
- Ample electrical points with Modular Switches (Legrand/ Schneider /equivalent)
- Concealed copper wiring;
- TV Point
- WIFI Point.
- AC provision in the Living & all Bedrooms



## Doors

- The main door with both sides laminate, night latch and handle
- Internal flush doors with laminate and lock & cylindrical handle
- 3 Track powder-coated Aluminium sliding door for attached Balcony with Mosquito mesh



## Flooring & Dado

- 2'X4' Vitrified tiles flooring with skirting
- Anti-skid ceramic tile flooring for the terrace
- Glazed tiles up to the lintel level in the toilet



## Kitchen

- Glazed dado tiles 2' above the platform top
- Black granite platform with stainless steel sink;
- Provision for Exhaust Fan
- Provision for water purifier.
- Provision for washing machine with water inlet & outlet

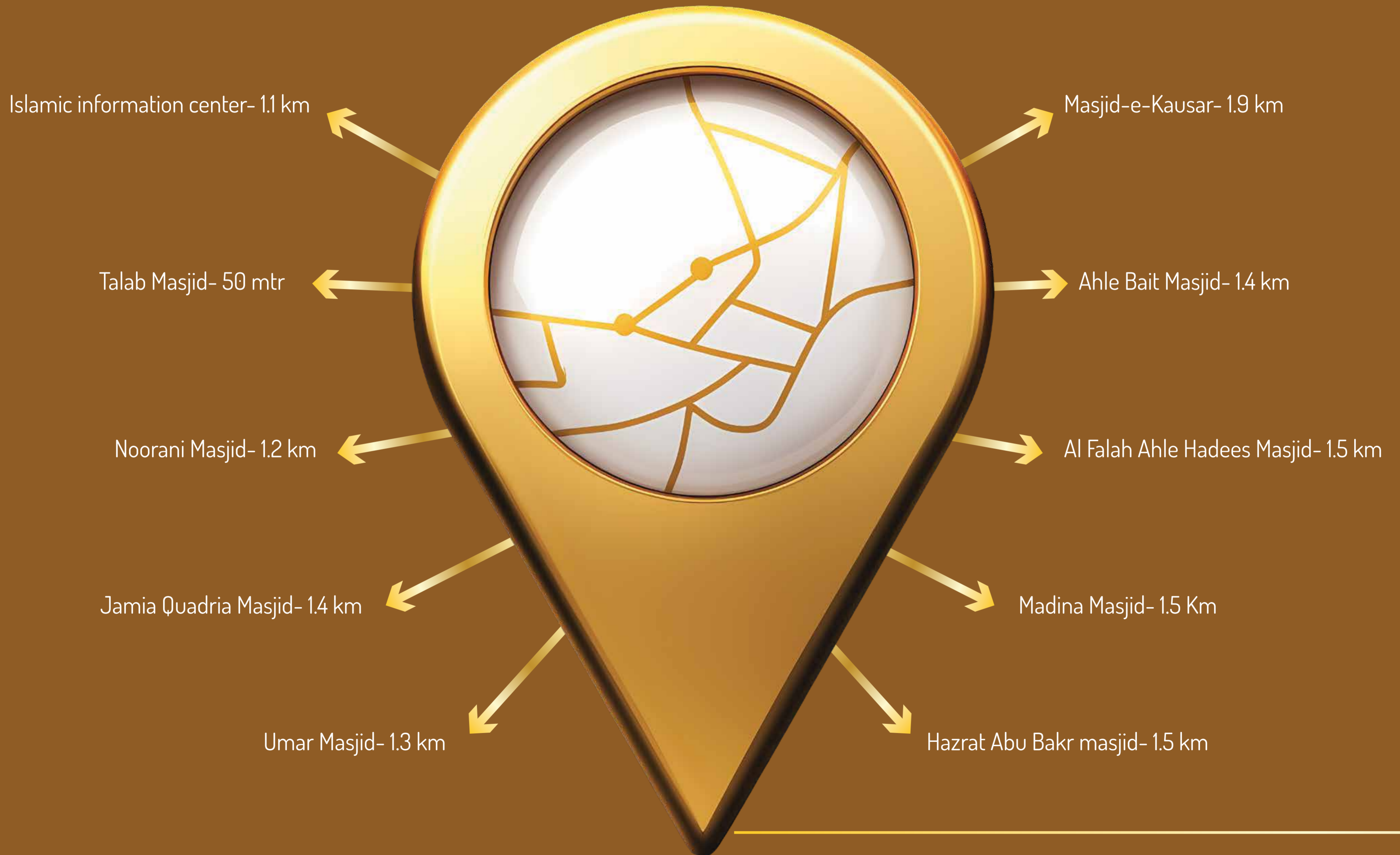


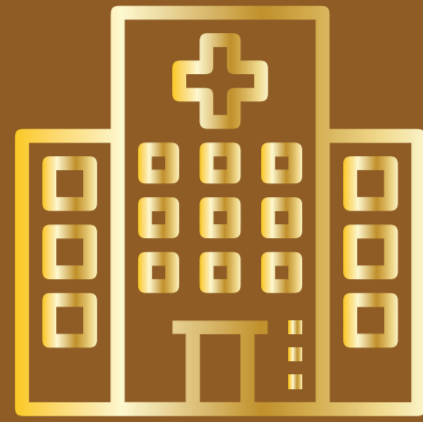
## Structure

- Earthquake-Resistant structure

# YOUR WORLD, CLOSER TO YOU

Seamless connectivity meets everyday convenience – all from one perfect address.





#### HEALTHCARE PROXIMITY

Noble Hospital – 13 min

Ruby Hall Clinic – 10 min

Inamdar Multispeciality Hospital – 11 min



#### DAILY ESSENTIALS

Market Yard – 15 min | D Mart – 5 min

Reliance Smart – 6 min



#### LIFESTYLE & RECREATION

The Corinthians Resort & Club – 9 min

Tribeca Highstreet – 12 min | Clover Hills Plaza – 11 min

Jyoti Restaurant – 5 min



#### EDUCATION HUB

Vibgyor School – 6 min | Bishop's School – 9 min

Delhi Public School – 9 min | Euro School – 12 min

Sinhgad Technical Institute – 13 min

Bharati Vidyapeeth – 15 min



#### SEAMLESS CITY CONNECTIVITY

NIBM Road – 3 min | Camp – 9 min

Swargate & Hadapsar – 13 min

Katraj (NH 48) – 14 min

Magarpatta City – 22 min



#### TECH & TRADE HUB

Hadapsar Industrial Area – 15 min

Kharadi IT Park – 30 min

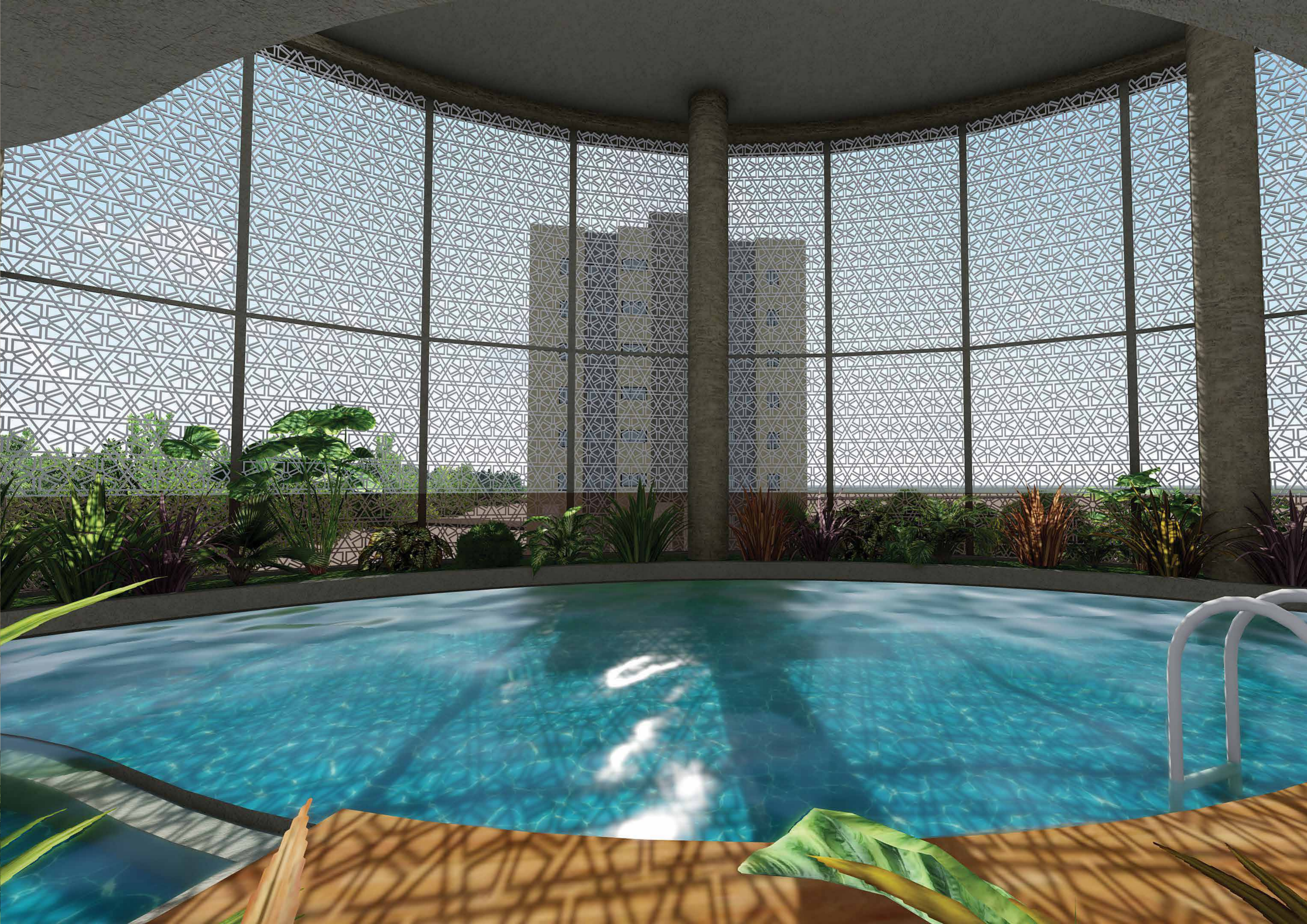
IT Park (SP Infocity) – 15 min

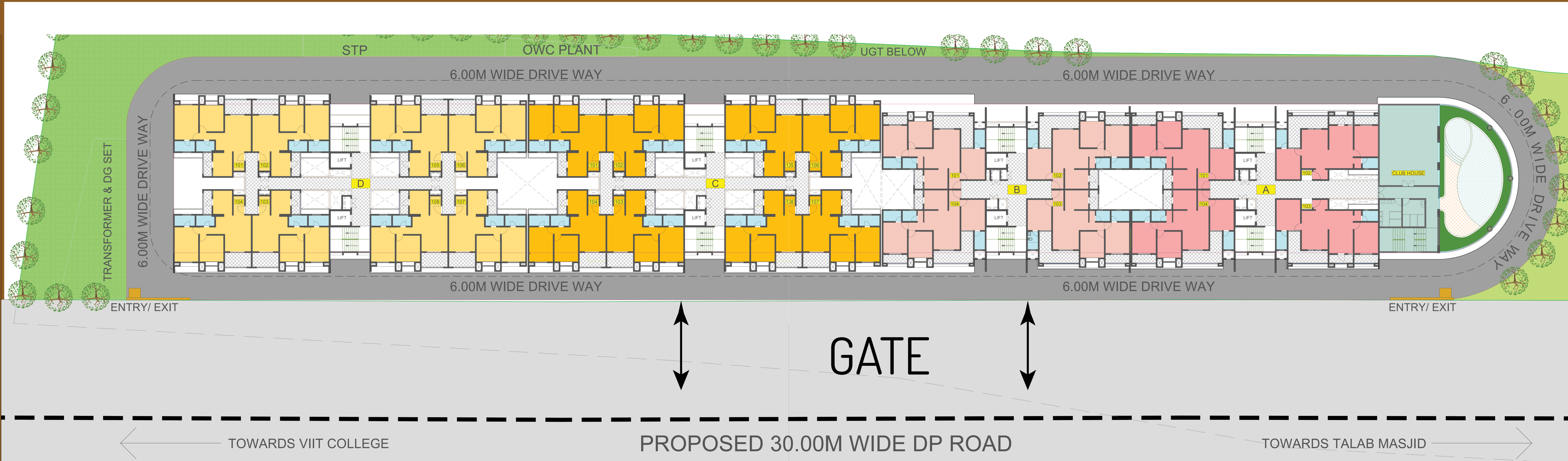
Magarpatta IT Park – 15 min

TRU Meadows  
DUBAI INSPIRED LIVING

A modern reception desk with a white terrazzo top and a base of vertical gold-colored slats. A staff member in a white uniform is behind the counter. The TRU Meadows logo, featuring a stylized house icon and the text "TRU Meadows DUBAI INSPIRED LIVING", is mounted on the wall behind the desk and is surrounded by a lush green wreath.

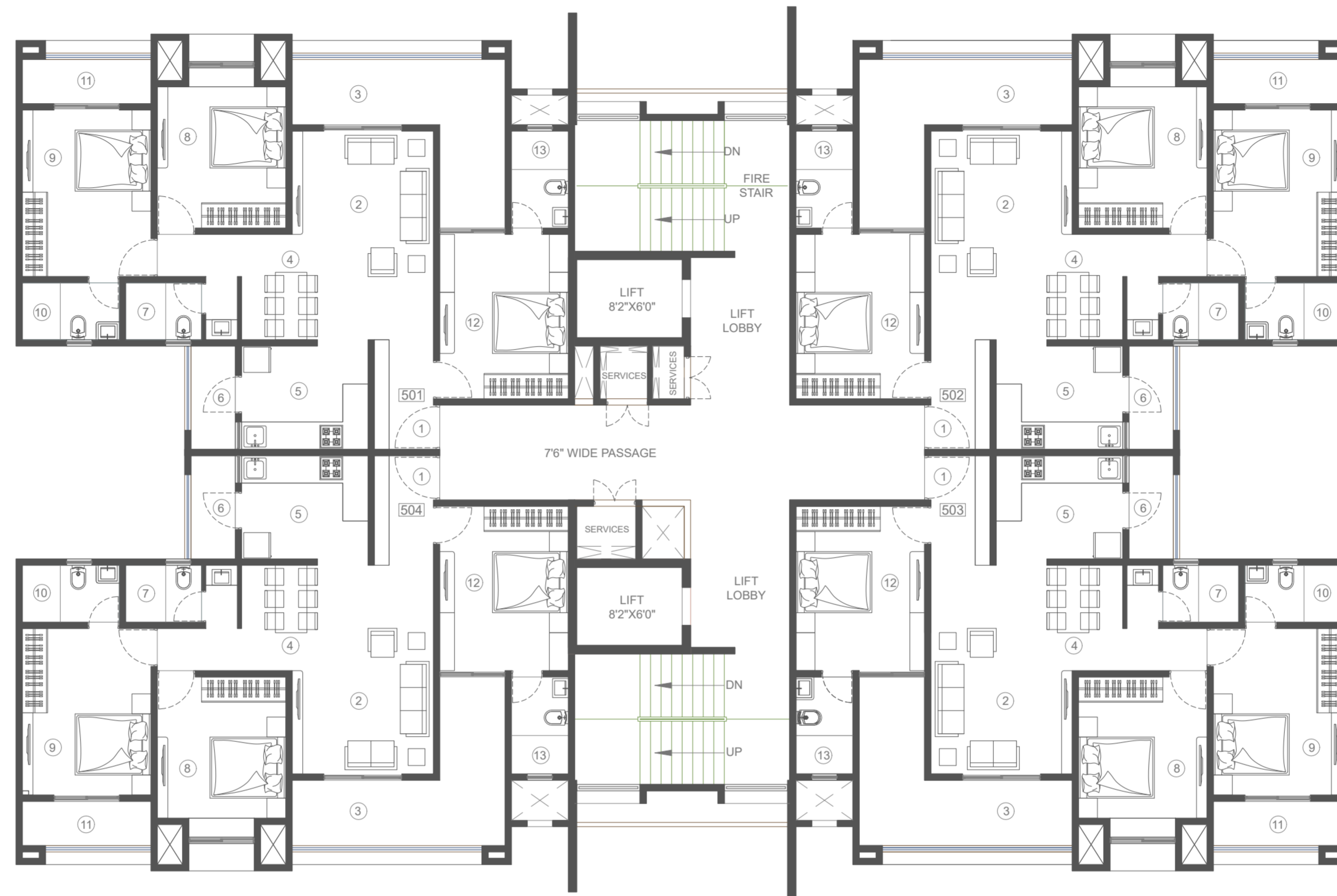




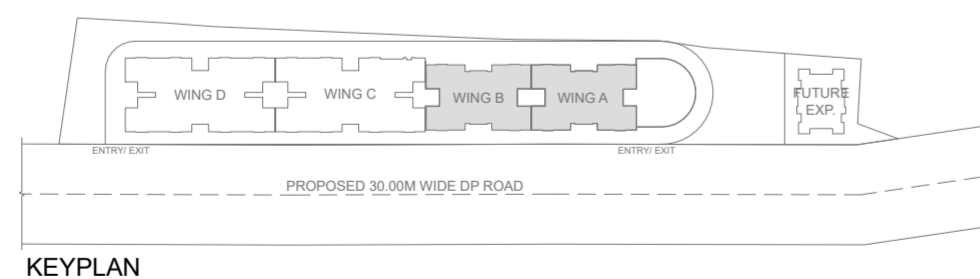


# PROJECT UNITS DISPLAY

# WING A & B -TYPICAL FLOOR PLAN



WING A & B (3 BHK)



KEYPLAN

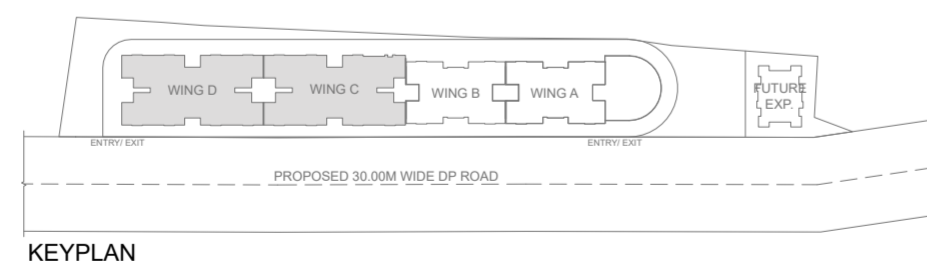
TOTAL CARPET

805.79

# WING C & D - TYPICAL FLOOR PLAN



WING C & D (2 BHK)

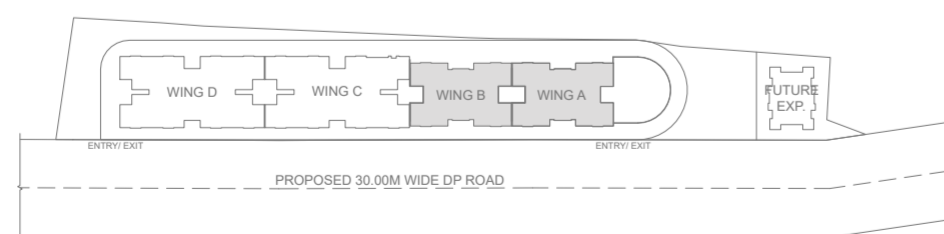


TOTAL CARPET  
1083.21

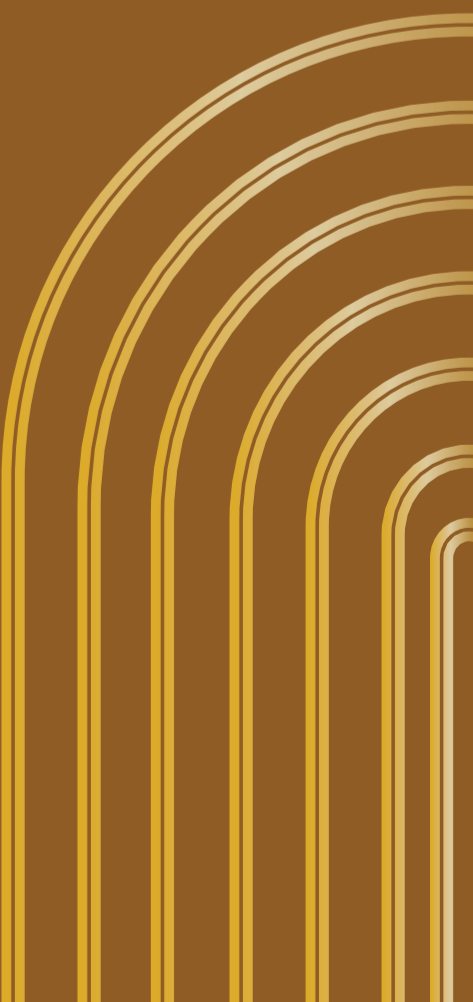
# WING A & B - REFUGE LEVEL



WING A & B (6TH & 11TH FLOOR PLAN - REFUGE LEVEL)



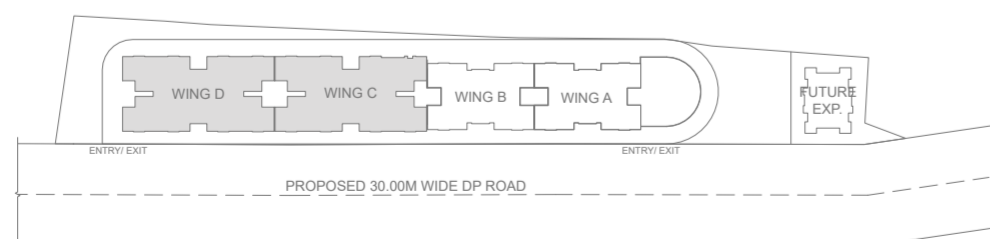
KEYPLAN



# WING C & D - REFUGE LEVEL

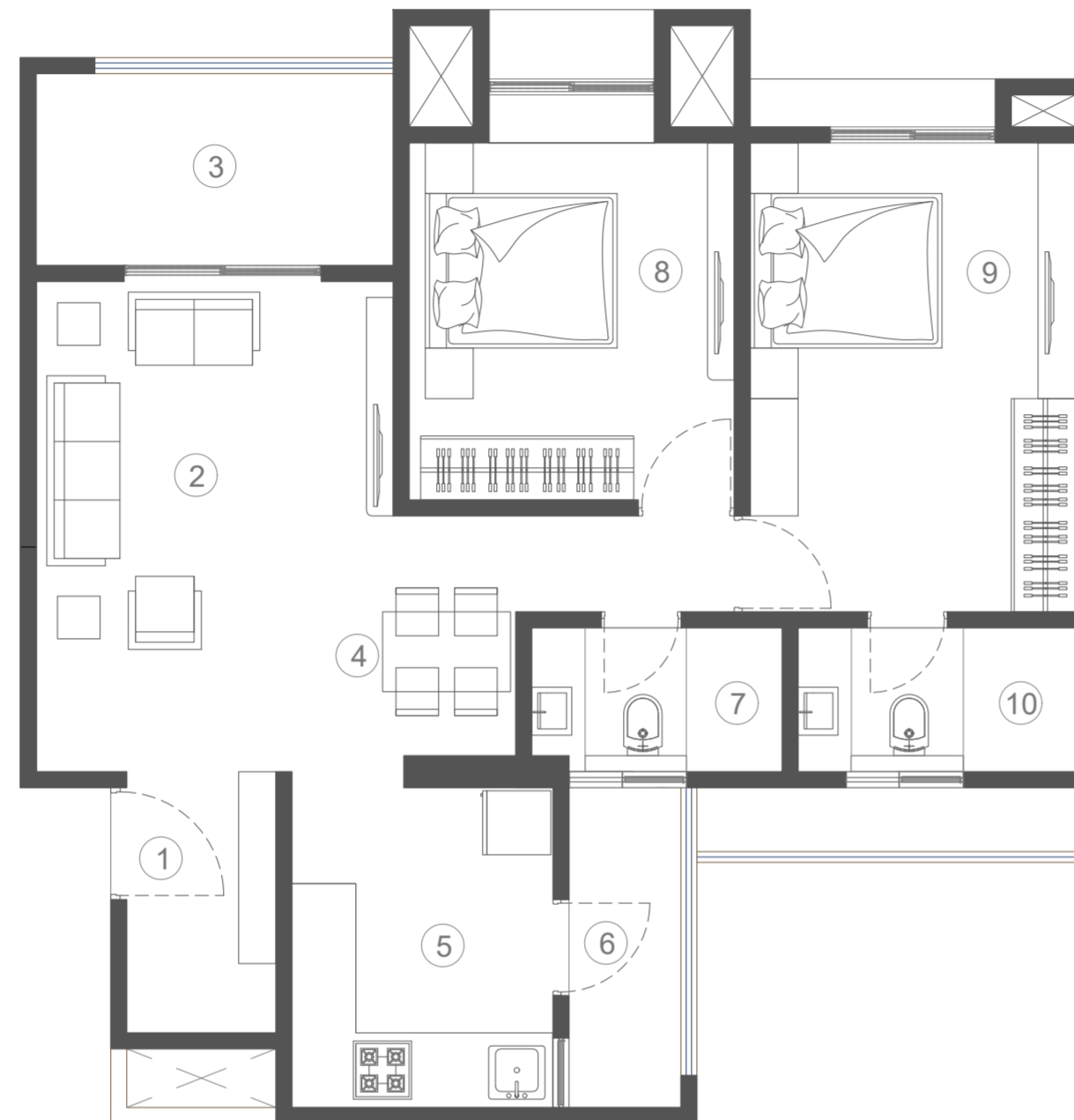


WING C & D (6TH & 11TH FLOOR PLAN - REFUGE LEVEL)



KEYPLAN

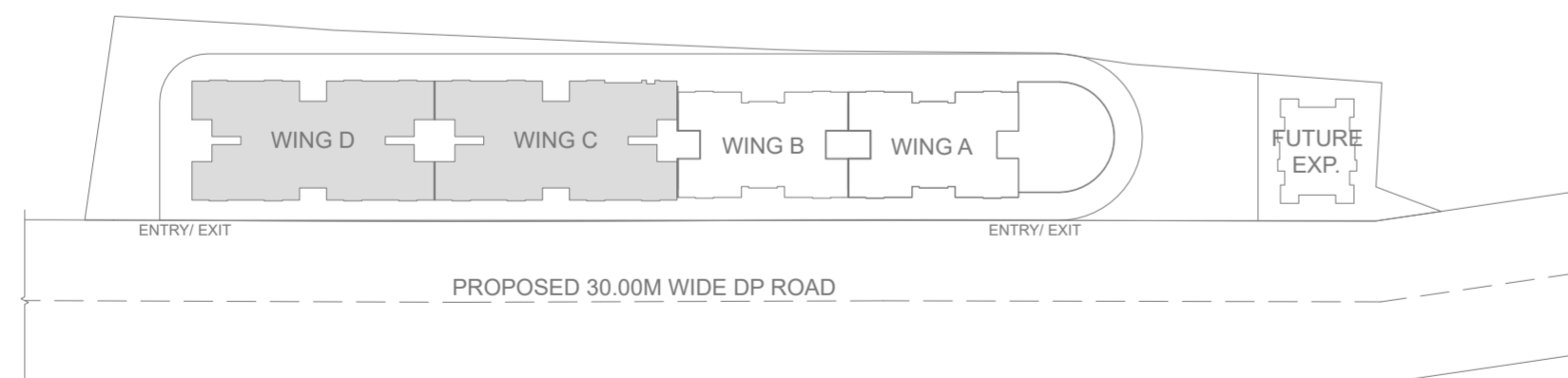
# 2 BHK UNIT PLAN



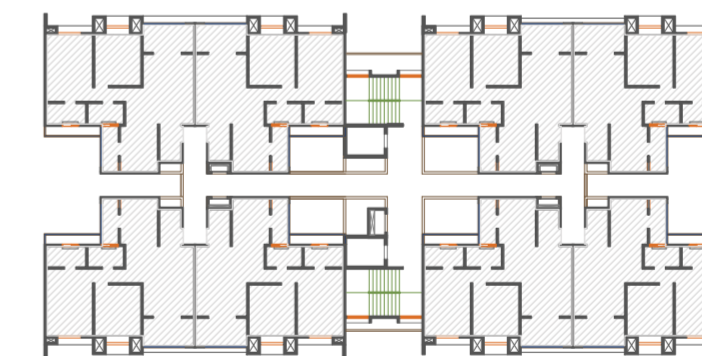
SYMBOL	DESCRIPTION	SIZE
1	ENTRANCE LOBBY	4'7" X 8'0"
2	LIVING ROOM	11'0" X 15'1"
3	BALCONY	11'0" X 5'11"
4	DINING	6'9" X 4'5"
5	KITCHEN	8'0" X 9'10"
6	DRY BALCONY	3'5" X 9'10"
7	COMMON TOILET	7'9" X 4'5"
8	BEDROOM 1	11'0" X 9'10"
9	MASTER BEDROOM	14'5" X 9'10"
10	MASTER TOILET	8'4" X 4'5"

TYPE	(1) CARPET AREA In Sq.mtr	(2) BALCONY AREA In Sq.mtr	(3) DRY BALCONY AREA In Sq.mtr	(4=1+2+3) TOTAL AREA In Sq.mtr	TOTAL CARPET AREA In Sq.Ft
2 BHK	65.68	6.03	3.15	74.86	805.79

WING C & D (2 BHK)  
 FLAT NO : 106, 206, 306, 406, 506, 606, 706,  
 806, 906, 1006, 1106, 1206, 1306, 1406, 1506



KEYPLAN



WING C & D (2 BHK)

TOTAL CARPET  
 805.79

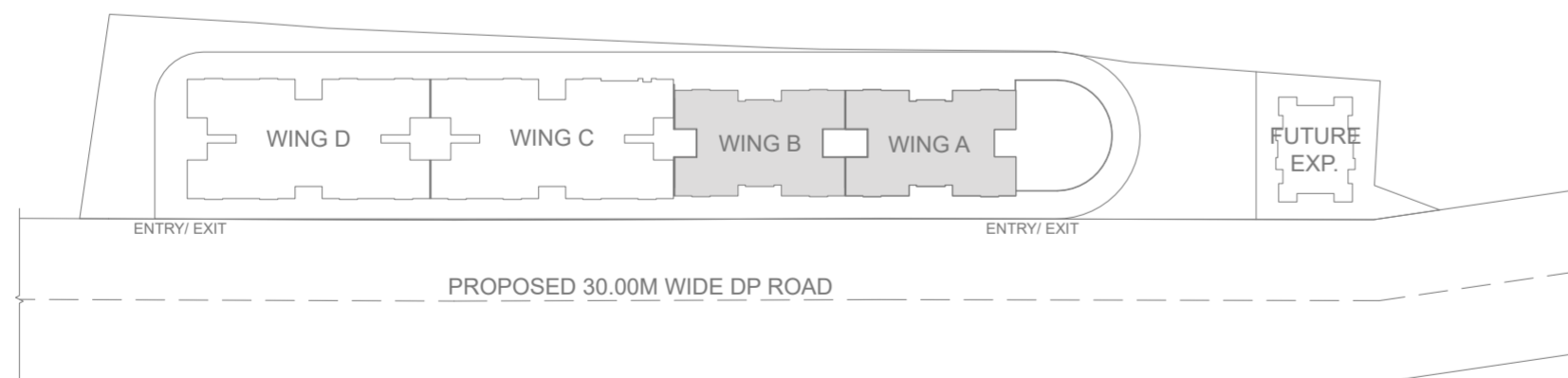
# 3 BHK UNIT PLAN



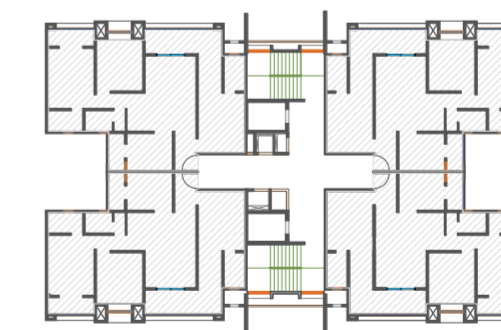
SYMBOL	DESCRIPTION	SIZE
1	ENTRANCE LOBBY	4'7" X 8'6"
2	LIVING ROOM	11'0" X 16'3"
3	BALCONY	16'7" X 5'1"
4	DINING	5'7" X 8'0"
5	KITCHEN	9'10" X 8'0"
6	DRY BALCONY	3'5" X 8'0"
7	COMMON TOILET	5'11" X 4'5"
8	BEDROOM 1	9'10" X 11'0"
9	MASTER BEDROOM	9'10" X 13'0"
10	MASTER TOILET	7'5" X 4'5"
11	BALCONY	9'10" X 3'5"
12	BADROOM 2	10'0" X 12'10"
13	TOILET 2	4'5" X 7'7"

TYPE	(1) CARPET AREA In Sq.mtr	(2) BALCONY AREA In Sq.mtr	(3) DRY BALCONY AREA In Sq.mtr	(4=1+2+3) TOTAL AREA In Sq.mtr	TOTAL CARPET AREA In Sq.Ft
3 BHK	83.29	14.77	2.57	100.63	1083.21

WING A & B (3 BHK)  
 FLAT NO : 203, 303, 403, 503, 603, 703, 803,  
 903, 1003, 1103, 1203, 1303, 1403, 1503



KEYPLAN



WING A & B (3 BHK)

TOTAL CARPET  
 1083.21

## TRU REALTY - A COMMITMENT OF TRANSPARENCY AND TRUST

Since 2018, TRU Realty has been reshaping real estate with technology at the core and you at the heart. With 2 million sq. ft. delivered across Mumbai and Pune, we blend AI and design thinking to build smarter and faster—turning every buyer into a co-creator of meaningful homes.

**Operating Cities: Pune & Mumbai | Team Strength: 70+ Professionals | Proposed Projects: Worth 1000+ Million**

 [trurealty.in](https://trurealty.in)

 020 4855 2731 |  [trumeadows.com](https://trumeadows.com)

A PROJECT BY  
**TRU**  
REALTY

**Fab Five Realty**  
LLP