



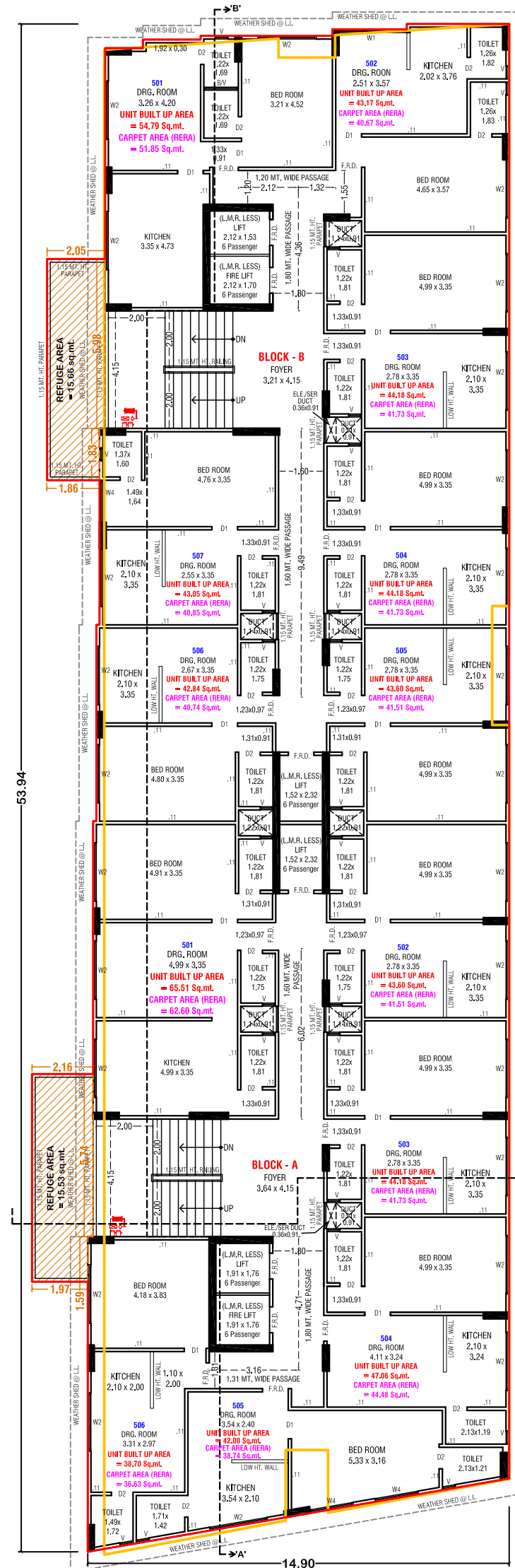
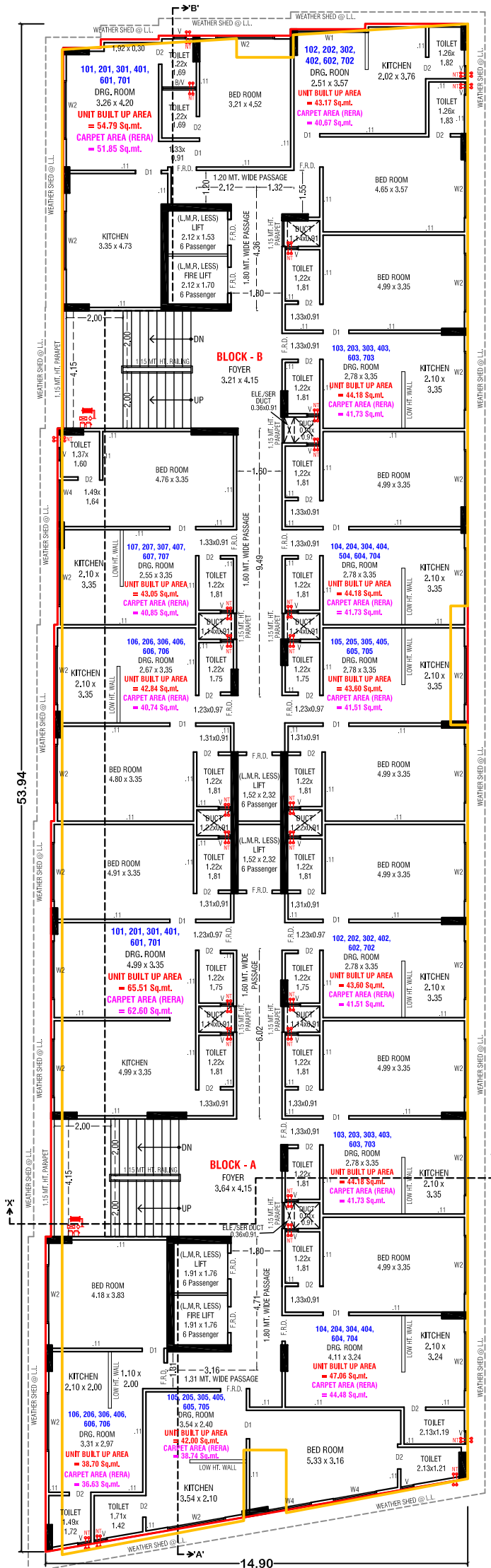
*Ratna Mohan*  
**ARHAM BLISS**

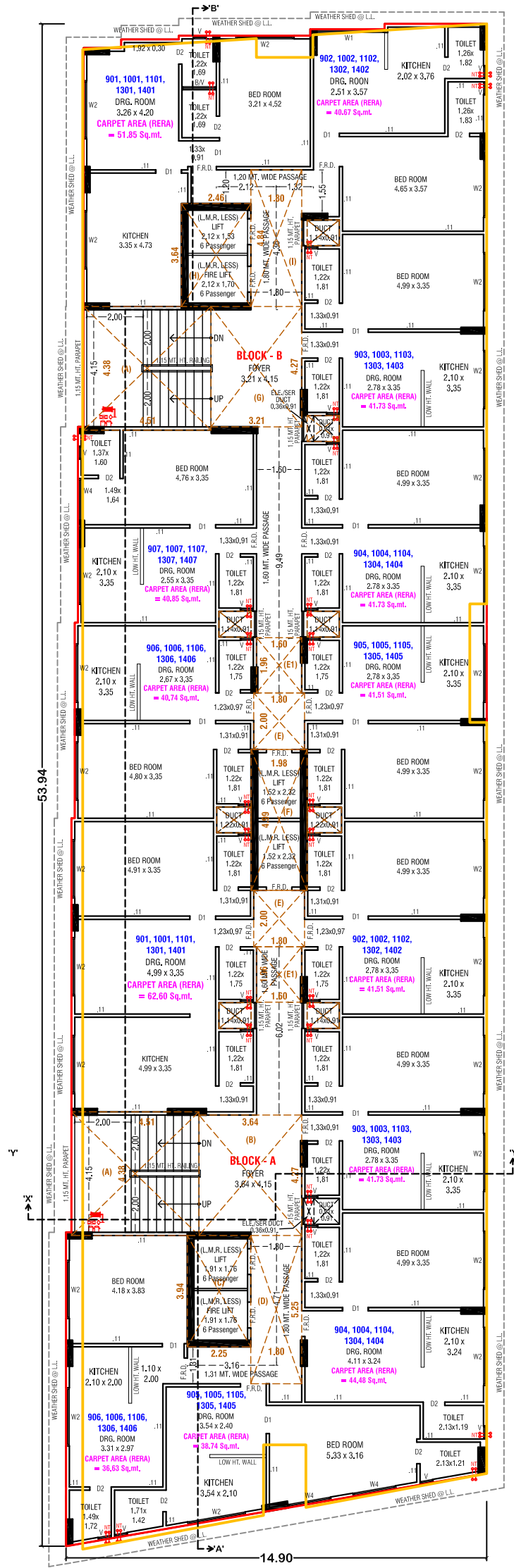
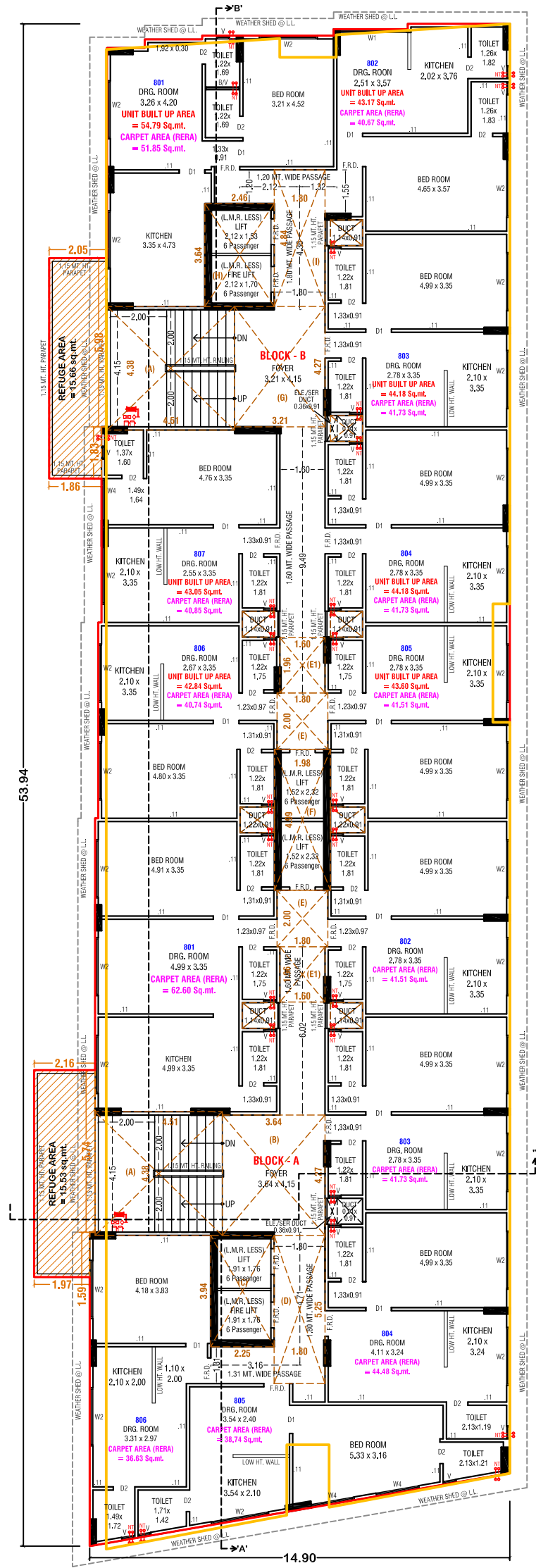


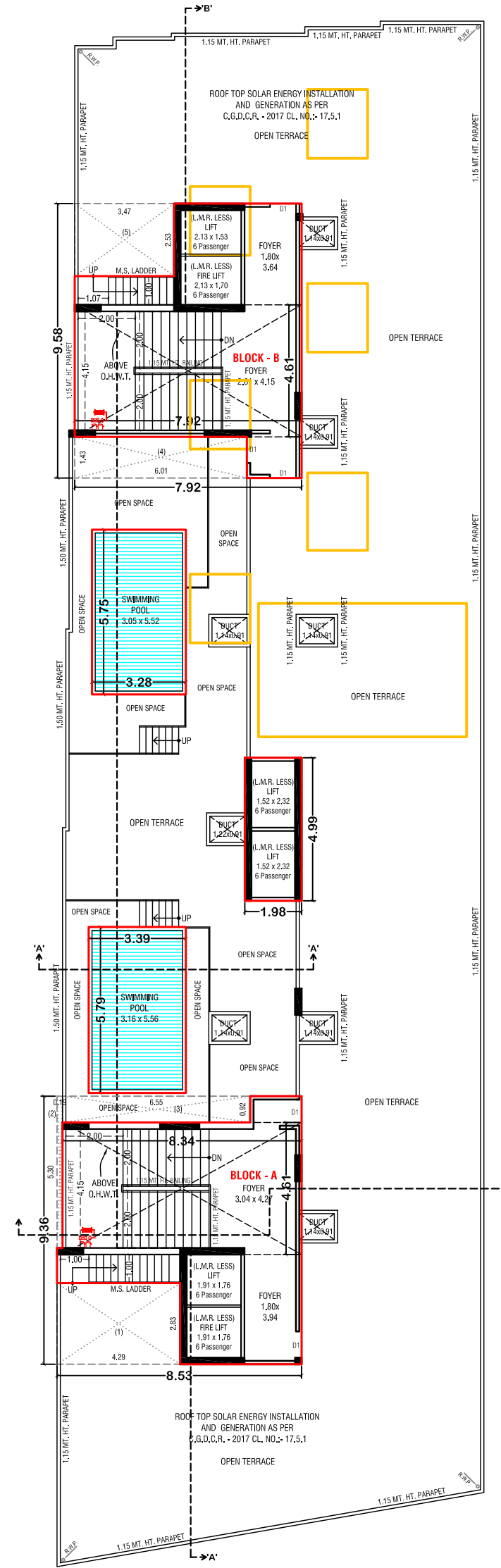
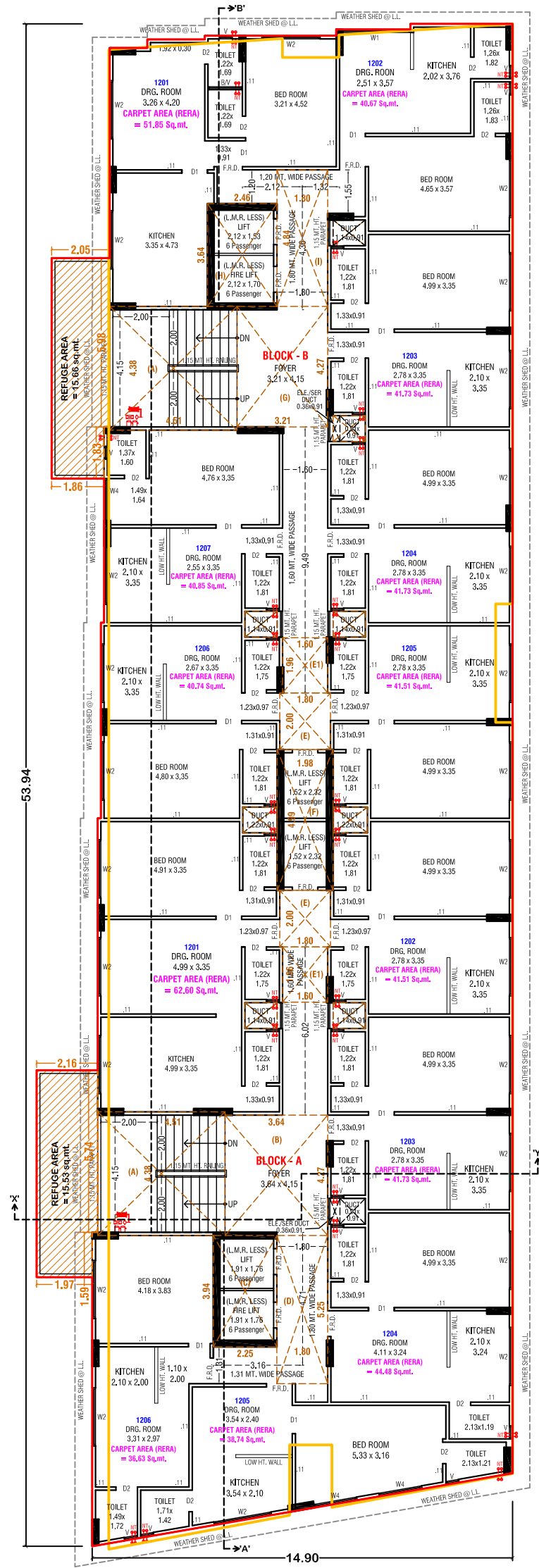
*Ratna Mohan*   
**ARHAM BLISS**

**14**  
Storey  
Tower









# SPECIFICATION

## STRUCTURE



Safe & Sound quality controlled R.C.C. frame structure with best material component. Earthquake resistant design.

## FLOORING



A Unique Design Premium Quality Vitrified Tiles in all apartments.

## KITCHEN / STORE



Exclusive granite platform with ISI CPVC & UPVC S.S. Sink & Design tiles dado up to lintel level. Washing machine inlet/outlet in wash area. Provision for gas pipeline.

## TOILET / PLUMBING



Western concept designed toilet. Concealed plumbing with gas geyser point in wash area.

## ELECTRIFICATION



Concealed copper wiring with adequate number of points in all rooms Concealed electrification with premium quality copper wire / cable Premium branded modular switches and accessories.

## DOOR



Veener main door & Internal door flush door with granite frame.

## WINDOWS



Fully glazed anodized / powder coated aluminum windows with Granite seal frame.

## ELEVATORS



Premium quality high speed elegant elevator with automatic door.

## WALL / PAINT



External wall with double coat sand face texture with acrylic paint. Internal wall mala plaster with white finish putty.

• Commencement and timely execution of the project is subject to all necessary approvals from relevant govt. authorities, occurrence of natural calamities or any other external beyond developer's control. • The dimensions shown in the brochure are approximate. • The developer reserves the right to change, revise or make any modification, addition, omission or alteration in the scheme as a whole or part thereof, at their sole discretion. • The brochure is only for illustration & private circulation purpose & is not a legal document or a binding one. • Government levies like stamp duty, registration charges, legal charges, GST and other additional charges are to be borne by the member.



Site Address :

Nr. Sakar V, B/h. Chamber of commerce, off Ashram Road, Ahmedabad - 38000

Contact : +91 93270 59133

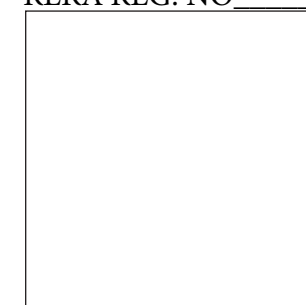
Developer  
**PARAM**  
CONCORP LLP

Architect  
**DIPIN**  
GORECHA

Structure Engineer

**ACHAL PARIKH**  
CONSULTING ENGINEER

RERA REG. NO



[www.gujrera.gujarat.gov.in](http://www.gujrera.gujarat.gov.in)

SCAN FOR LOCATION



Developer  
**PARAM**  
CONCORP LLP

Site Address :

Nr. Sakar V, B/h. Chamber of commerce,  
off Ashram Road, Ahmedabad - 38000

Contact : +91 93270 59133