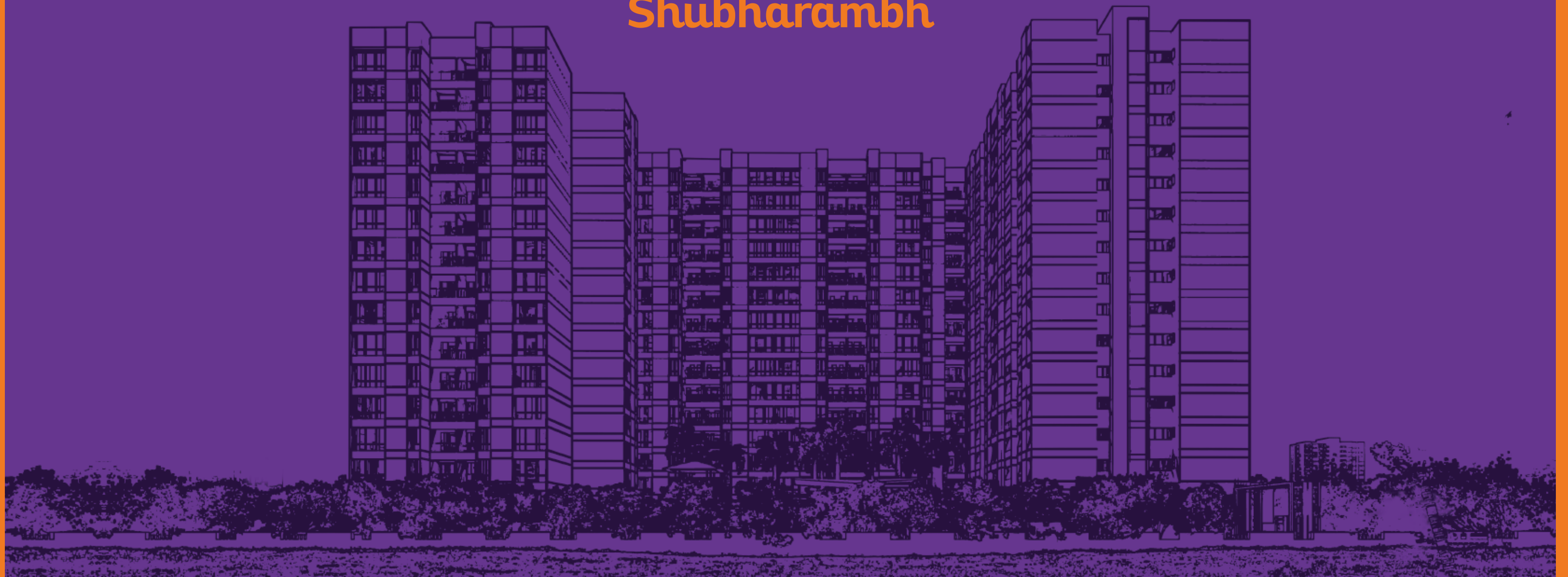


KHUSH 2.0
Vista A PARKLANE HOME

**Khushiyon ka
Shubharambh**





SPREADING HAPPINESS

A Project by:



KHUSH **2.0**
Vista A PARKLANE HOME

AAPKE KHUSHIYON KI CHABI

A project by Elated Housing, KhushVista is thoughtfully conceptualized and designed with one core emotion—Happiness. It's a place where children can play and explore freely, where you can embrace nature and an active lifestyle, and where elderlies can relax in comfort. Every aspect of KhushVista is crafted to bring joy and contentment into your life.

From cozy 1 BHK homes to thoughtfully curated amenities, from an ideal location to impeccable construction quality, KhushVista promises a vibrant and enriched lifestyle at every step.



OUR JOURNEY OF CREATING HAPPY HOMES STARTED WAY BEFORE KHUSHVISTA



Completed Projects

Meghashrusti

Located in Kothrud, Pune, Meghashrushti is a project developed by Siddhi Promoters. It is an elegant residential creation with 70 units of 2 & 3 BHK homes that has been aesthetically designed and planned for the residents.



Ongoing Projects

ATZ, Yewalewadi

Apex Trade Zone is a one-of-a-kind 45-acre commercial project located in Yewalewadi, Kondhwa, with plots ranging from sizes 5,000 sq. ft. to 40,000 sq. ft.

Launching Soon

14-Acres Township at Wagholi



Ongoing Projects



ABC, Gangadham Chowk

The ABC Apex Business Court is a 2 lakh sq. ft. commercial space with 175+ office spaces and high street shopping area with the perfect combination of a great location and a well-designed business hub. Located near the IT hub and fast-growing residential areas, it offers the right opportunity for businesses to thrive.



ATZ, Yewalewadi

Apex Trade Zone is a one-of-a-kind 45-acre commercial project located in Yewalewadi, Kondhwa, with plots ranging from sizes 5,000 sq. ft. to 40,000 sq. ft.



Aundh Renaissance, Parihar Chowk

Beautifully designed and crafted, Aundh Renaissance is a landmark project with spacious apartments containing 125 units of 3 & 4 BHK homes along with exceptional amenities, located in Aundh, Pune.



Completed Projects



Parklane Premier

An aesthetically laid project with 2 high-rise towers, Parklane Premier offers 180 flawlessly designed 1, 1.5, and 2 BHK apartments that enliven your lifestyle.



Parklane Urbanjoy Phase - I

Parklane Urbanjoy is a meticulously planned development of 120 units with a ready social infrastructure of 2 & 3 BHK homes. It is near Baner & Balewadi and is close to a world of conveniences.



Parklane Capital 11

Nestled in the bustling heart of central Pune, this project stands as a testament to contemporary design and functionality. Designed as a state-of-the-art coworking space, tailored for productivity.



Parklane LifeSeasons

Located in Dhanori, LifeSeasons is a project designed with 365 units of 1 and 2 BHK homes to make every season of life a little more beautiful and a lot more memorable.

Ongoing Projects



Parklane Urbanjoy Phase - II

Located in the heart of Sus, Urbanjoy is a smartly designed 2 & 3 BHK project with 500+ proposed units equipped with all the amenities and specifications to help you live a joyous life.



KhushVista

KhushVista is designed to bring happiness into every aspect of living. With spacious 2 BHK homes, unique amenities, and a serene environment, it ensures joy for all age groups. Its prime location and superior construction promise a fulfilling and vibrant lifestyle.



**UNLOCK THE DOOR
TO KHUSHIYAN
UNLIMITED**



Artistic impression may differ from project offering.



1 BHK HOMES



KHUSHIYON KE DO KADAM

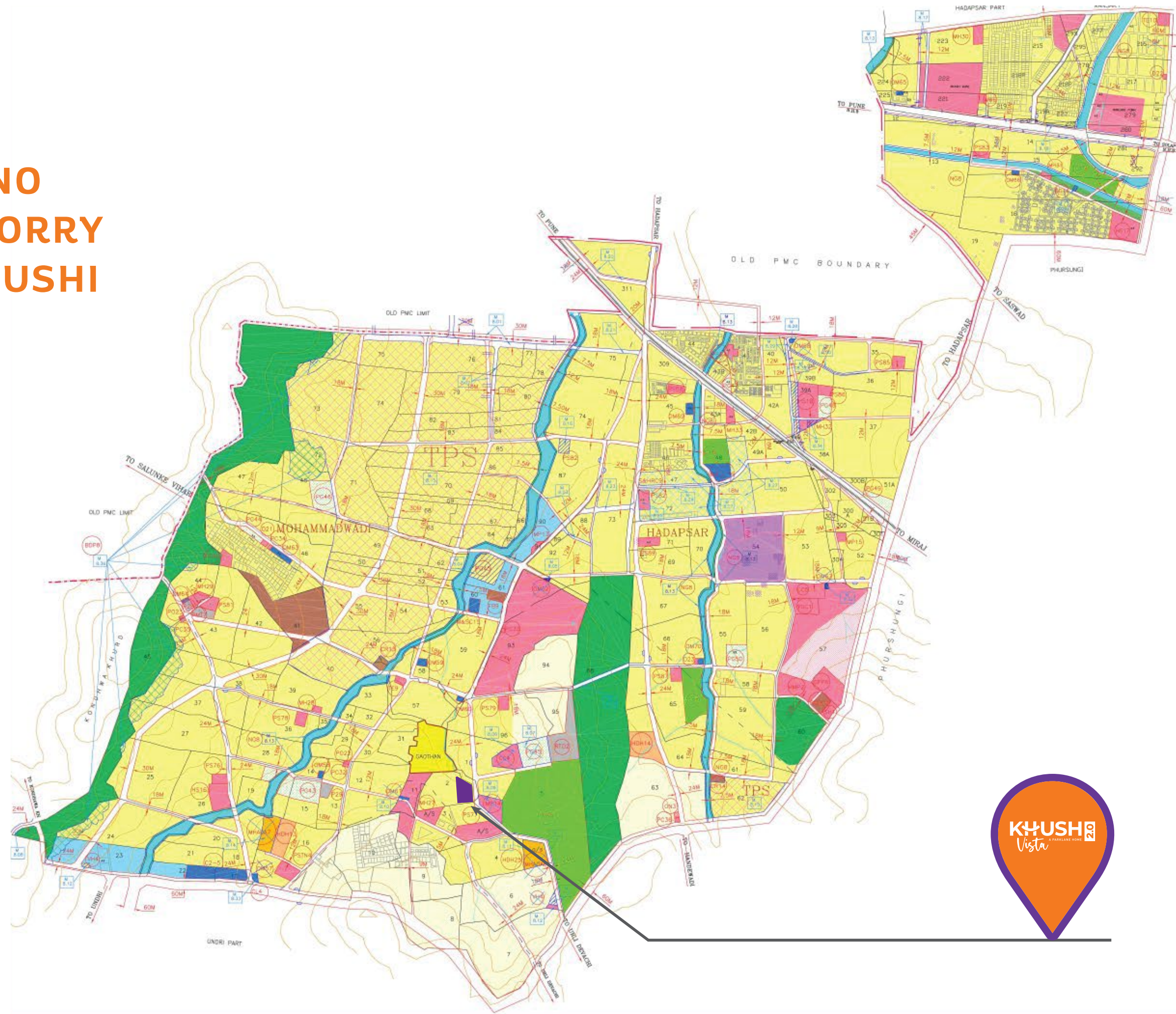


Phase 2.0 - 1 BHK Homes

Artistic impression may differ from project offering.



**YOU'LL HAVE NO
REASON TO WORRY
AAPKI HAR KHUSHI
HAI YAHIN**





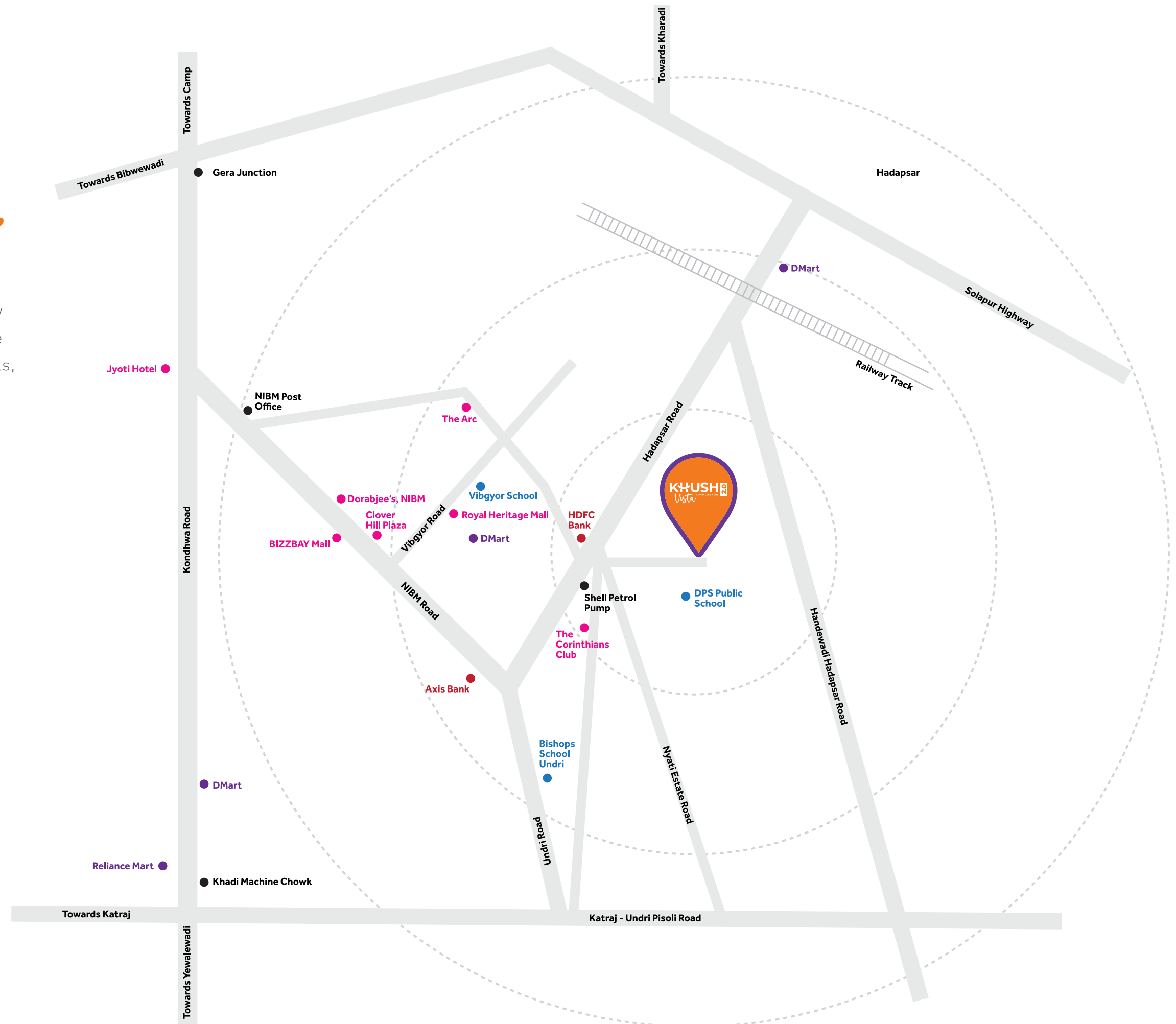
AAPKI HAR KHUSHI, AAPKE KAREEB

Located Off NIBM Road, KhushVista takes you away from the chaos and yet, keeps you connected to the pulse of the city. With breathtaking views of the hills, and the proximity to prominent schools, colleges, hotels, hospitals, recreational centers, shopping centers and malls, it offers you the perfect blend of bliss and convenience.

For Google Location
Scan here



Map not
to scale





KEY HIGHLIGHTS OF LOCATION

School, Colleges, Hospital,
Infrastructure, Essentials,
Hotels & Restaurants,
Social Infra



HOSPITALS & HEALTHCARE:

- Ruby Hall Clinic, Wanowarie - 3.5 KM
- Lifeline Hospital - 3.5 KM
- Noble Hospital - 5 KM
- Command Hospital - 7 KM
- Sahyadri Hospital Bibwewadi - 9 KM
- Ranka Hospital - 9.7 KM
- Sasoon Hospital - 10.4 KM
- KEM Hospital - 10.9 KM
- Jehangir Hospital - 10.9 KM



SCHOOLS:

- Delhi Public School - 550 M
- Kangaroo Kids - 1.5 KM
- Caelum High School - 1.5 KM
- Little Millennium Preschool - 1.6 KM
- The Bishop's School - 1.7 KM
- Podar Jumbo Kids Plus - 1.7 KM
- EuroSchool - 2.5 KM
- VIBGYOR High School - 2.5 KM
- Sanskriti School - 2.5 KM
- Orchids The International School - 3.1 KM
- RIMS International School - 3.7 KM



TRAVEL & CONNECTIVITY:

- Mumbai Pune Highway - 7.8 KM
- Hadapsar Railway Station - 9.4 KM
- Pune Railway Station - 10.5 KM
- Pune Airport - 16.6 KM
- New Airport Connectivity (Proposed)
- Ring Road Connectivity (Proposed)



SPORTS & RECREATION:

- SportZone - Sports For You - 110 M
- Full-On Sports Zone - 500 M
- Cricket Academy and Other Sports - 500 M
- Nature Sports and Fitness Centre (NSFC) - 2.6 KM
- Turf Up - 4.1 KM
- National Sports Arena - 4.4 KM
- Race Sports Club - 5 KM



COLLEGES:

- Hilborn Jr College - 2 KM
- Trinity Polytechnic - 3.3 KM
- JSPM Group of Institutes - 4 KM
- RIMS International School and Junior College - 4.7 KM
- VIIT - 4.9 KM
- Sinhgad Law College - 6.1 KM
- St. Vincent College Of Commerce - 9.2 KM
- Poona College - 9.5 KM
- Bharati Vidyapeeth College - 10 KM



HOTELS:

- The Corinthians Resort and Club - 1.7 KM
- Crowne Plaza - 11.7 KM
- Conrad Pune - 11.7 KM
- Oakwood Residence - 11.7 KM
- Sheraton Grand Pune - 12.7 KM
- Radisson Blu Hotel - 12.8 KM
- The Westin Pune - 13.5 KM
- The Ritz-Carlton Pune - 14.1 KM



RESTAURANTS & FINE DINING:

- Barbeque Nation, NIBM - 2.5 KM
- The FML Lounge - 2.5 KM
- Levit8 NIBM - 2.5 KM
- The Break Room - 2.5 KM
- Agent Jacks - 2.5 KM
- Jashn - 4.2 KM
- Spice Culture - 4.8 KM



BANKS & ATMS:

- HDFC Bank - 500 M
- Kotak Bank ATM - 700 M
- IDFC First Bank - 700 M
- ICICI Bank - 950 M
- Axis Bank - 950 M
- State Bank of India ATM - 1.3 KM



SHOPPING & ENTERTAINMENT:

- Clover Hills Plaza - 2.5 KM
- DMart, Mohammadwadi - 2.5 KM
- Royale Heritage Mall - 2.5 KM
- Inox - 2.5 KM
- Dorabjee's - 3 KM
- The Tribeca High Street - 3 KM
- Seasons Mall - 7.4 KM
- Amanora Mall - 7.4 KM



Artistic impression may differ from project offering.



**KHUSHIYA
UNLIMITED**



This is a lifestyle image and not a visual replica of the project offering.



Artistic impression may differ from project offering.



**YOUR PICTURE
PERFECT KHUSHIYON
WALA GHAR**



Artistic impression may differ from project offering.



This is a lifestyle image and not a visual replica of the project offering.



KHUSHIYAN BADHAEIN WITH 25+ UNIQUE REASONS

At KhushVista, experience amenities like never before. With unique places like Gazebo to hang out with neighbours, friends, and family, to the creative space like Graffiti Wall to the Multipurpose Play Court for sports enthusiasts, KhushVista offers contemporary and one-of-a-kind amenities that defy the stereotypes and give more reasons and better opportunities to relax, rewind, and rejuvenate.



Children's Play Area



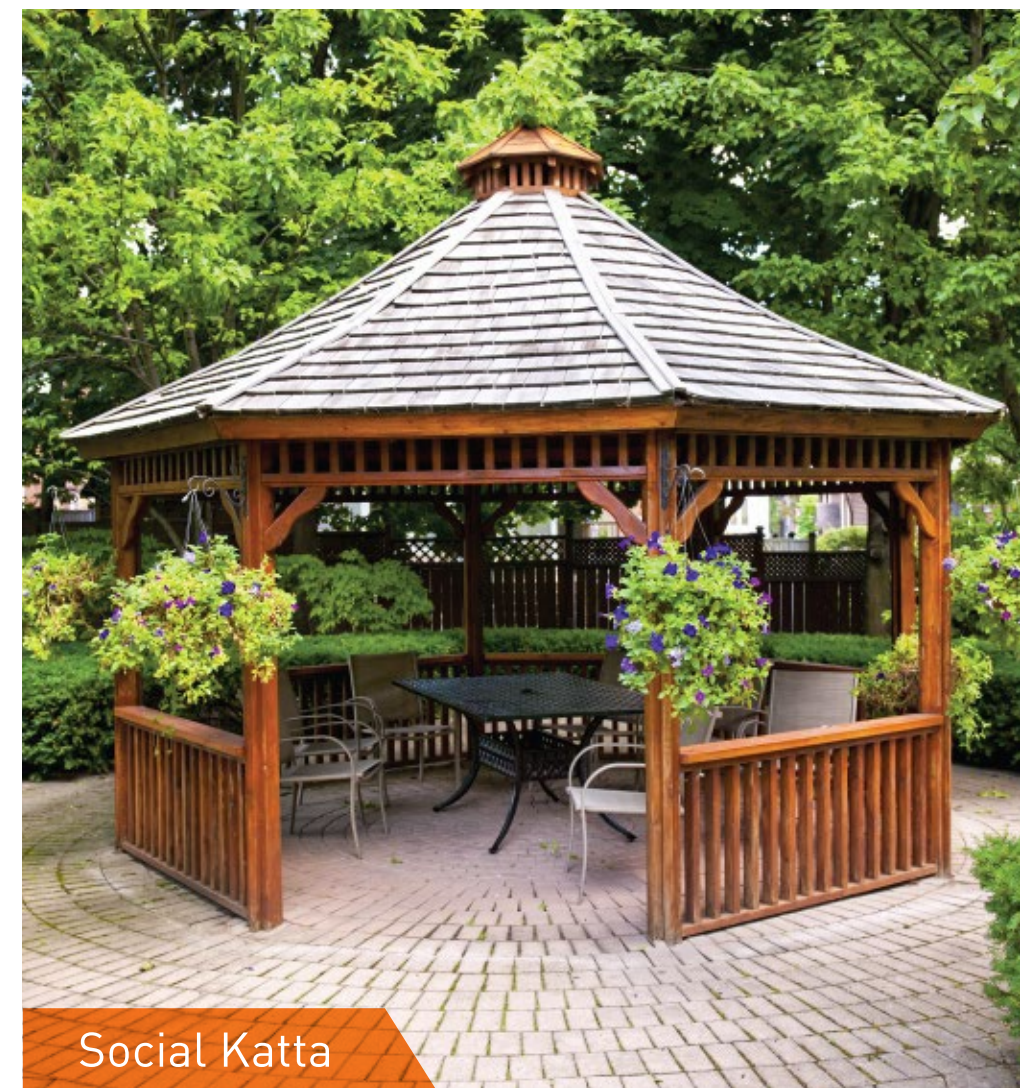
Multipurpose Play Court



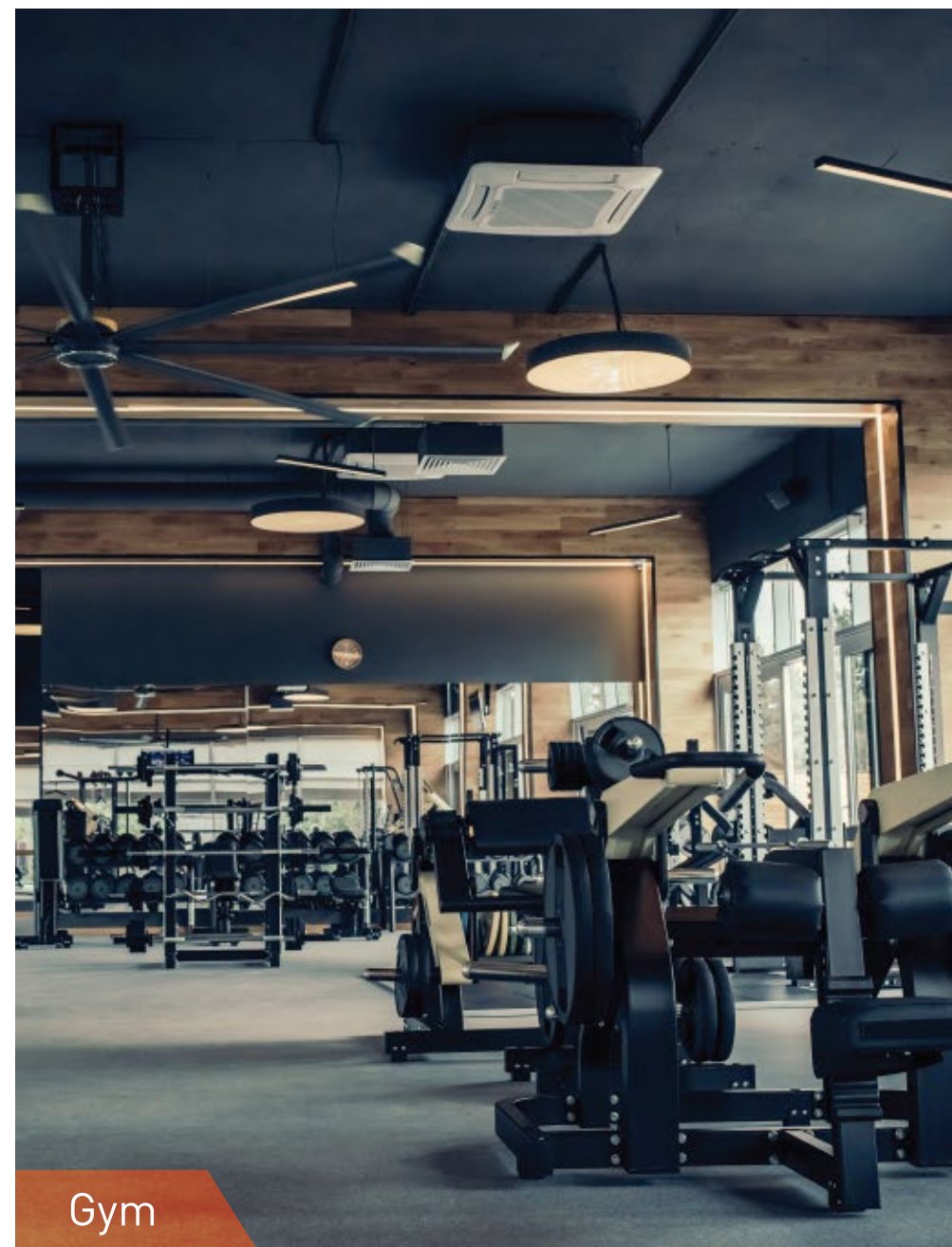
Lawn Area



Hammock



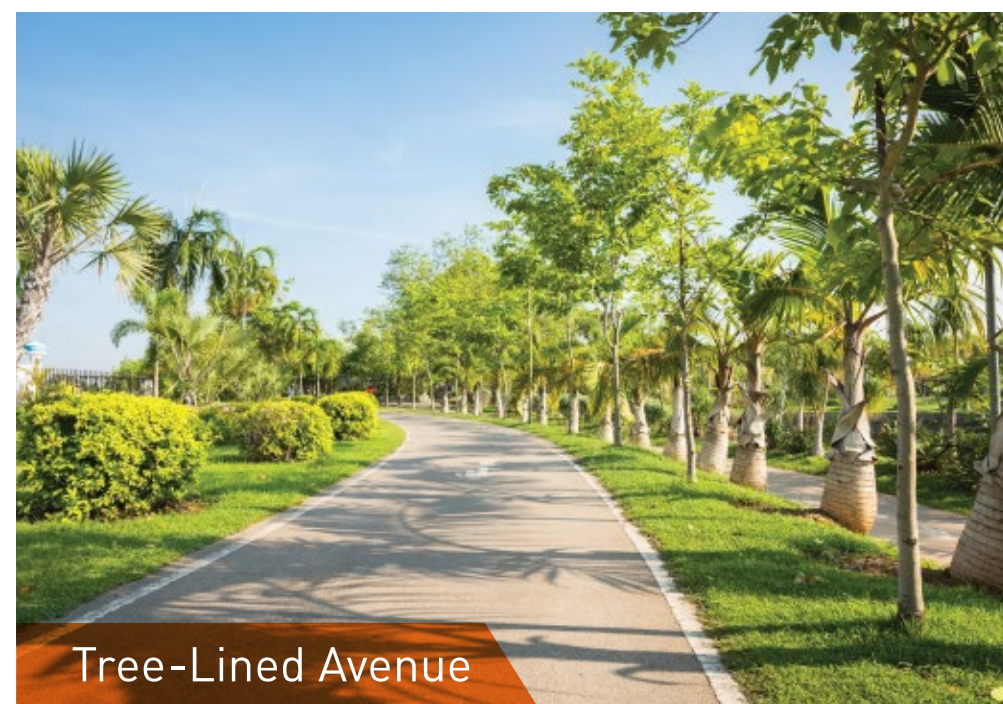
Social Katta



Gym



Machan



Tree-Lined Avenue

FITNESS:

- Multipurpose Play Court
- Acupressure Pathway
- Stretch and Fitness Deck
- Gym

FOR CHILDREN AND TODDLERS:

- Children's Play Area
- Toddler's Play Area
- Graffiti Wall
- Foosball Table

LIFESTYLE:

- Terrace Garden
- Lawn Area
- Entry Pergolas
- Cozy Pocket
- Seating Plaza / Amphitheater
- Social Katta
- Gazebo
- Hammock
- Machan
- Multipurpose Club hall
- Entrance Plaza
- Water Feature
- Tree-Lined Avenue
- Palm Avenue
- Magnificent Entrance
- Rooftop Barbecue Deck
- Café Seating

CONVENIENCE:

- Retail Shopping Area
- WiFi Zone
- Genset backup for Common Area
- Internet Provision
- DTH Provision
- Inverter Provision
- Automatic Elevators

These are lifestyle images and not a visual replica of the project offering.



Artistic impression may differ from project offering.



KHUSHIYON KA LAYOUT



1 Ground Floor Amenities

2 Podium Floor Amenities

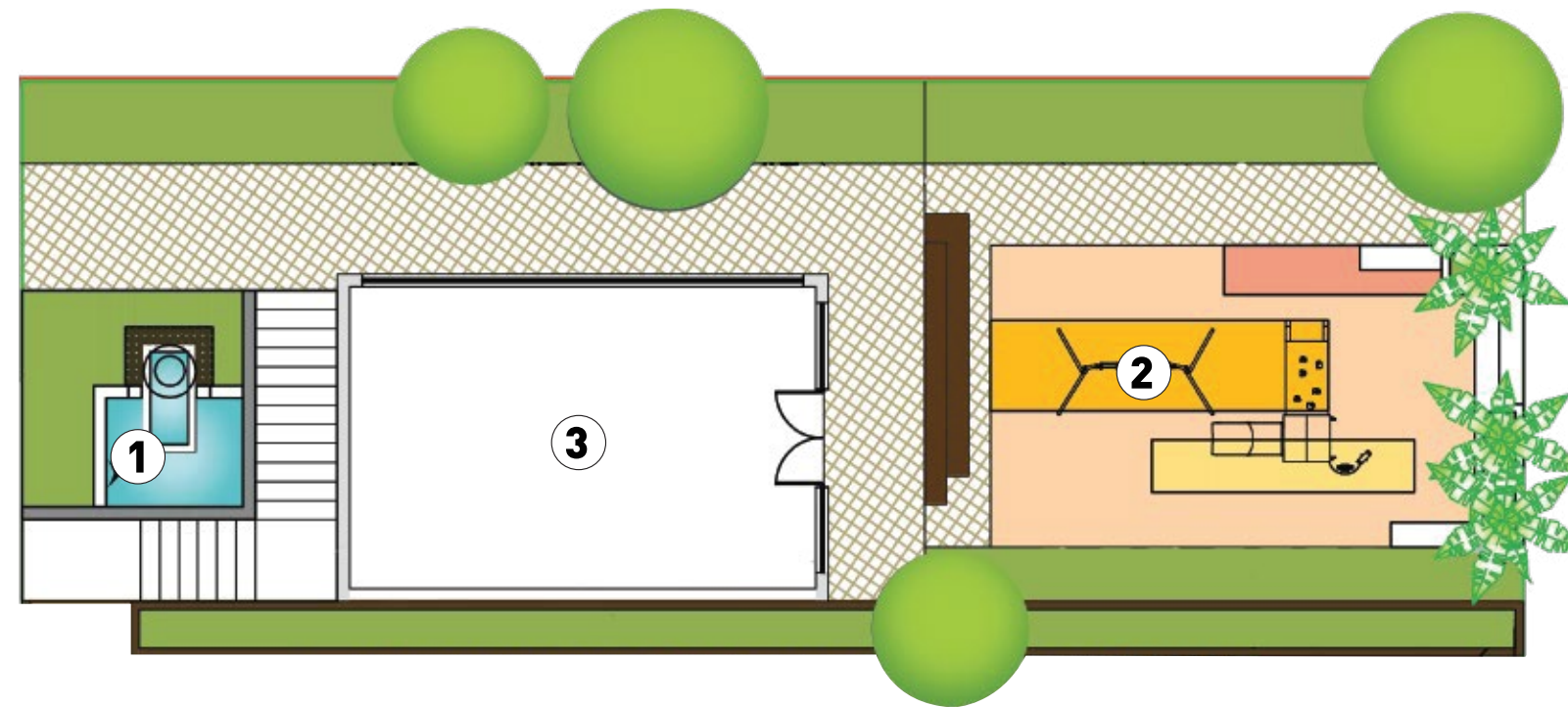
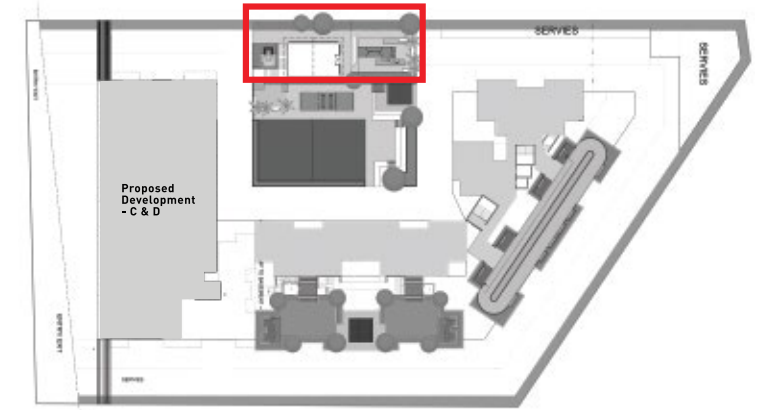


Artistic impression may differ from project offering.



Ground Floor

1. Water Feature & Entrance Plaza
2. Children's Play Area (Kids & Toddlers)
3. Gym
 - Stretch & Fitness Deck (Upper Floor)
 - Multipurpose Club Hall (Upper Floor)

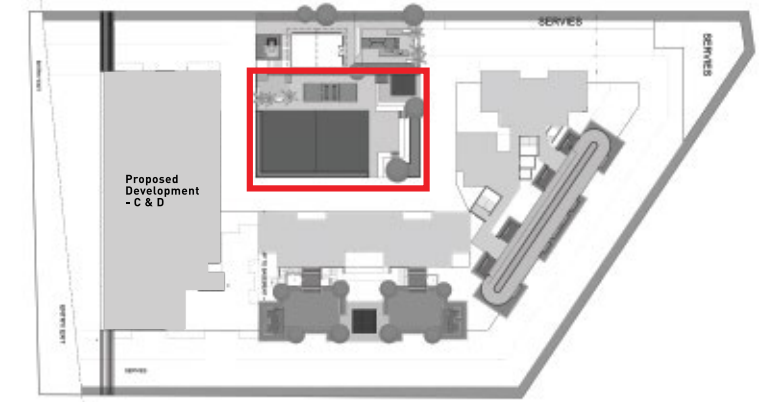
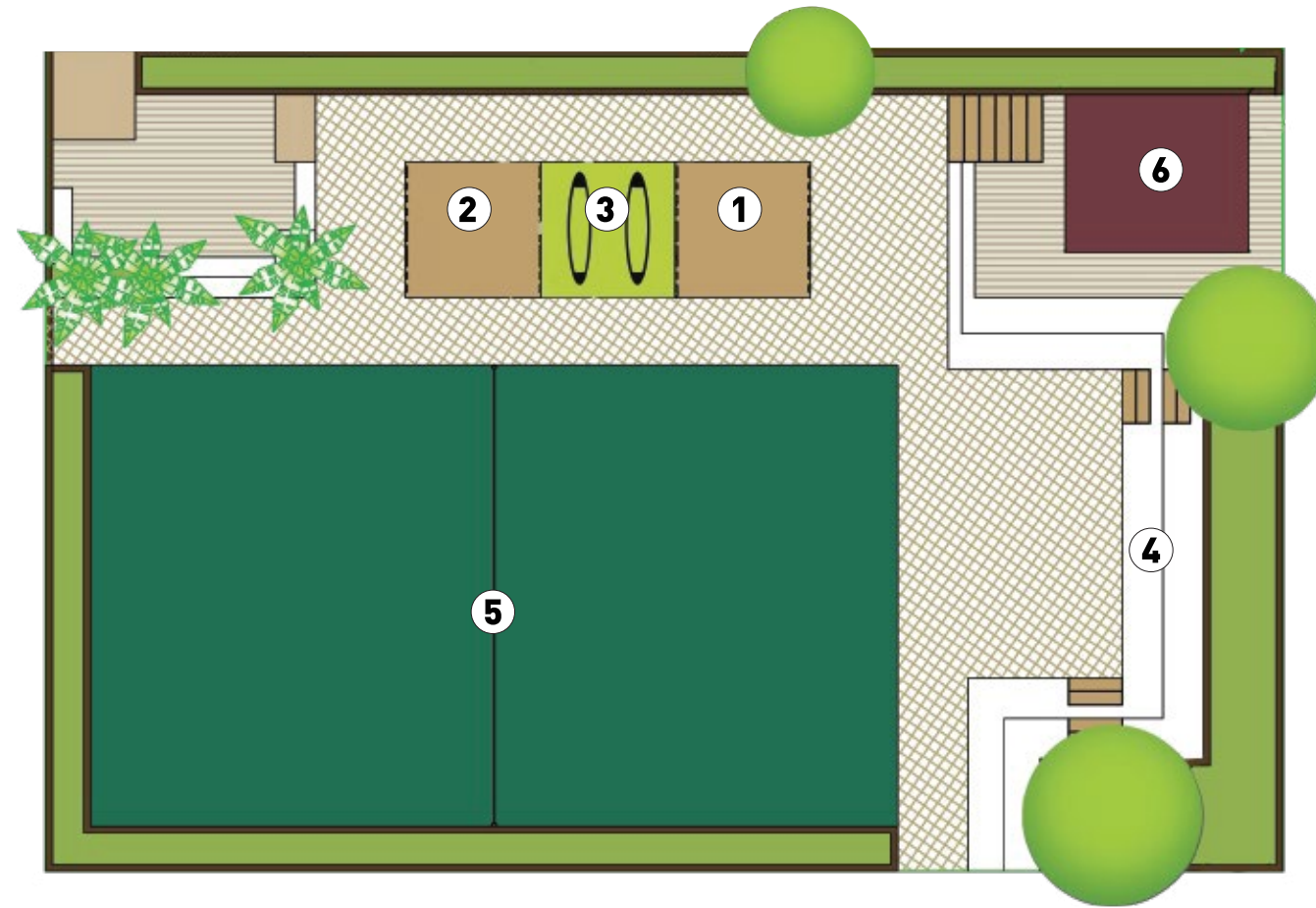


These are lifestyle images and not a visual replica of the project offering.



Podium Floor

1. Café Seating
2. Pergolas
3. Hammock
4. Amphitheatre / Seating Plaza
5. Multipurpose Play Court
6. Machan



These are lifestyle images and not a visual replica of the project offering.

FLOOR PLAN, WING - A

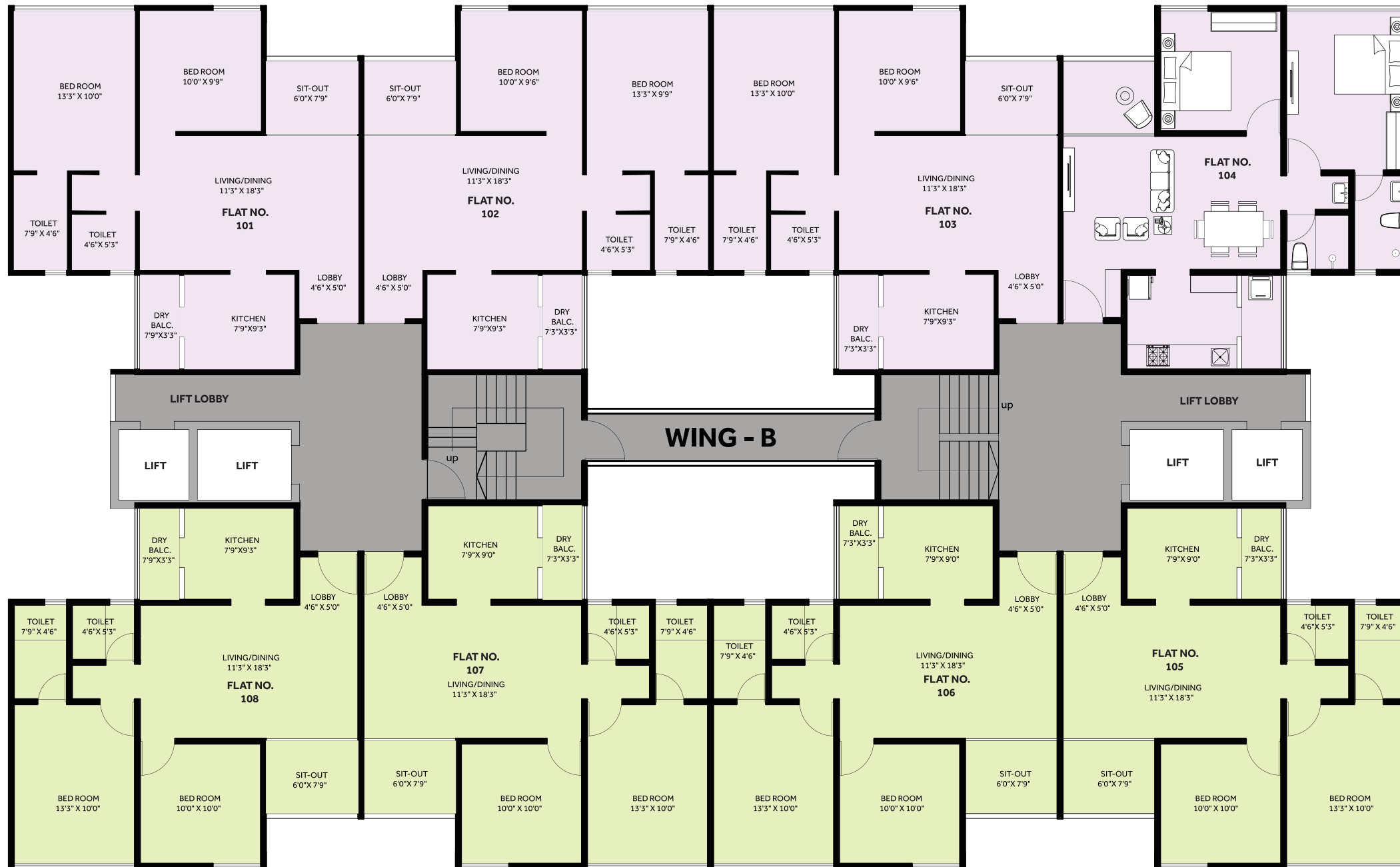
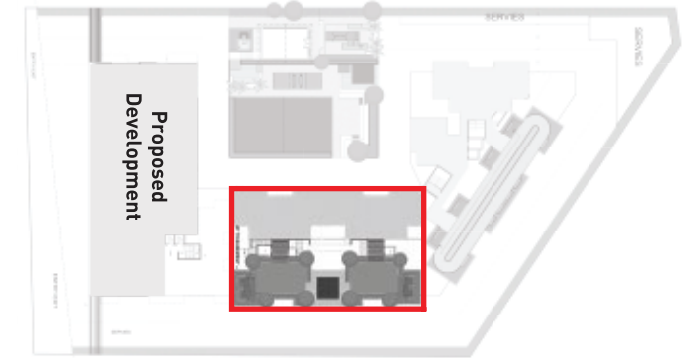


| FLOOR | UNIT NO | CARPET (SMT) | ENC. BALCONY (SMT) | BALCONY (SMT) | UNIT AREA (SFT) |
|---------|---------|--------------|--------------------|---------------|-----------------|
| 1 to 15 | 01 | 54.02 | 5.65 | 6.75 | 715 |
| 1 to 15 | 02 | 54.02 | 5.65 | 6.75 | 715 |
| 1 to 15 | 03 | 54.02 | 5.65 | 6.75 | 715 |
| 1 to 15 | 04 | 54.02 | 5.65 | 6.67 | 714 |
| 1 to 15 | 05 | 53.92 | 5.65 | 6.67 | 713 |
| 1 to 15 | 06 | 53.92 | 5.65 | 6.67 | 713 |
| 1 to 15 | 07 | 53.92 | 5.65 | 6.75 | 714 |

- Disclaimer:**
- Refuge units are 802 & 1302 in Wing A.
 - Floor Plan is considered as per final sanction.
 - Services as per the MEP plan are subject to changes.
 - Furniture shown is for visual representation only.
 - RCC columns & beams position shall be as per consultant plans within the units.



FLOOR PLAN, WING - B



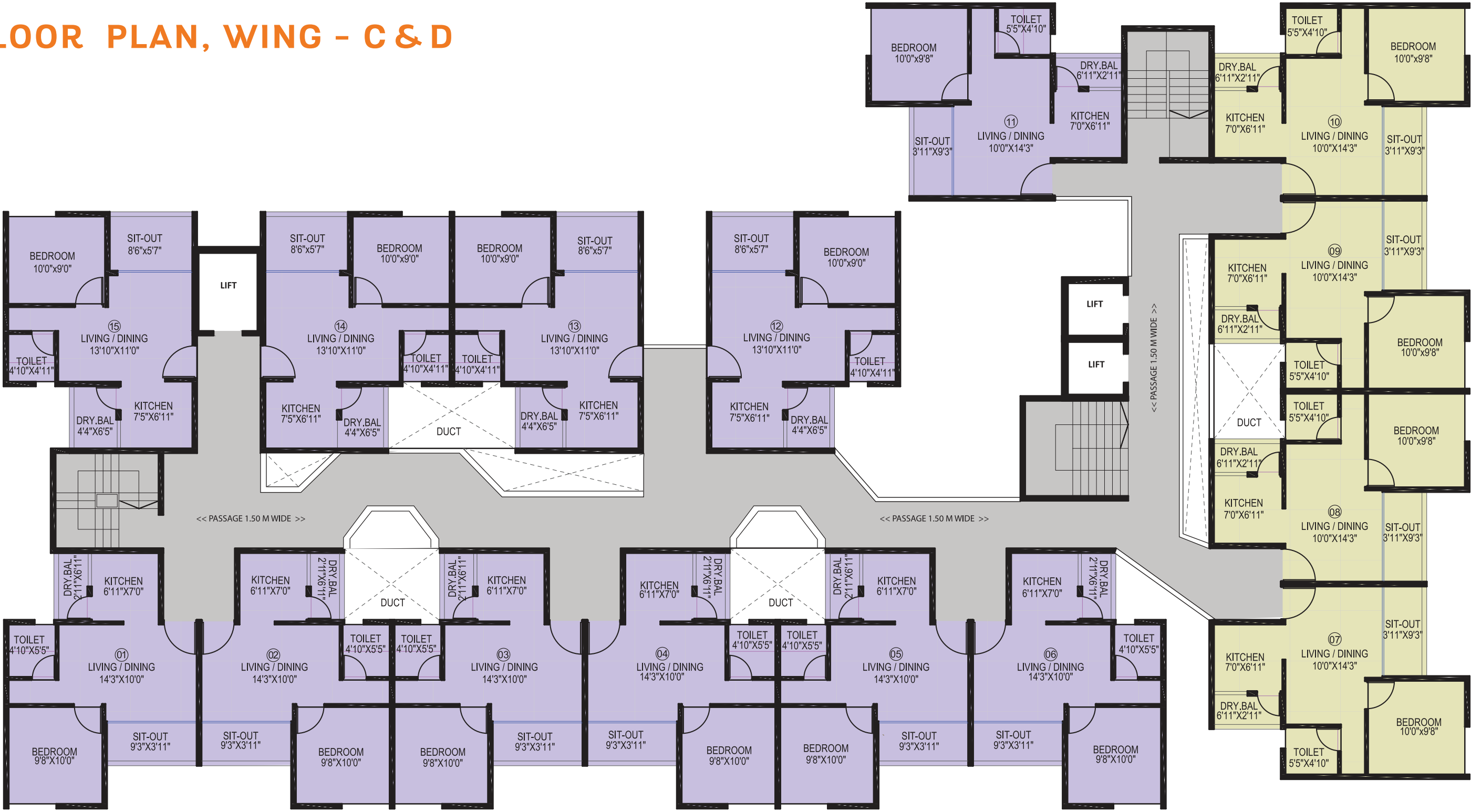
| FLOOR | UNIT NO | CARPET (SMT) | ENC. BALCONY (SMT) | BALCONY (SMT) | UNIT AREA (SFT) |
|---------|---------|--------------|--------------------|---------------|-----------------|
| 1 to 15 | 01 | 53.98 | 5.51 | 6.74 | 713 |
| 1 to 15 | 02 | 53.95 | 5.51 | 6.56 | 711 |
| 1 to 15 | 03 | 53.95 | 5.58 | 6.56 | 711 |
| 1 to 15 | 04 | 54.01 | 5.58 | 6.6 | 712 |
| 1 to 15 | 05 | 53.43 | 5.64 | 6.66 | 707 |
| 1 to 15 | 06 | 54.66 | 4.86 | 6.56 | 711 |
| 1 to 15 | 07 | 54.66 | 4.86 | 6.56 | 711 |
| 1 to 15 | 08 | 54.79 | 4.86 | 6.74 | 715 |

Disclaimer:

- Refuge units are 807 & 1307 in Wing B.
- Floor Plan is considered as per final sanction.
- Services as per the MEP plan are subject to changes.
- Furniture shown is for visual representation only.
- RCC columns & beams position shall be as per consultant plans within the units.



FLOOR PLAN, WING - C & D



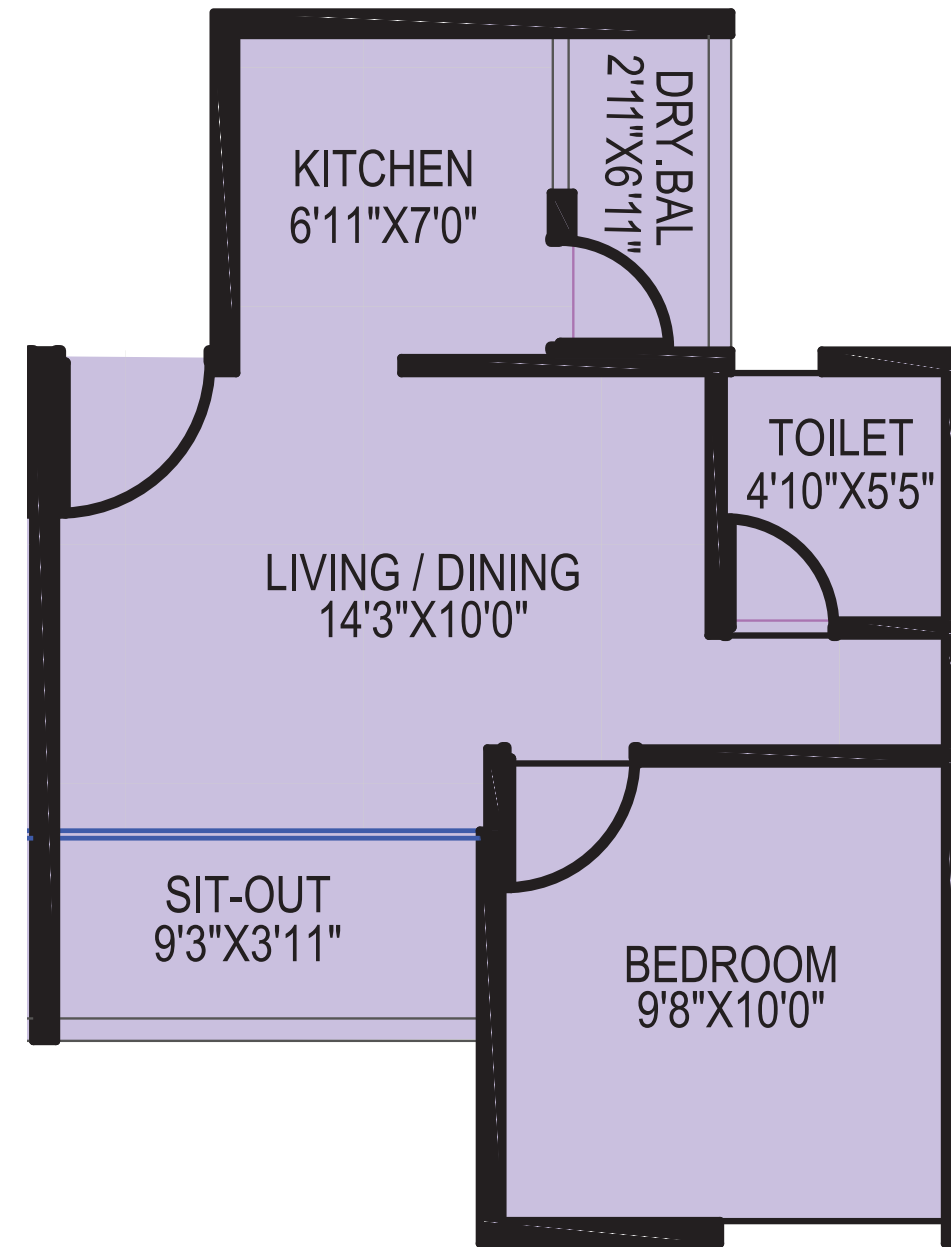
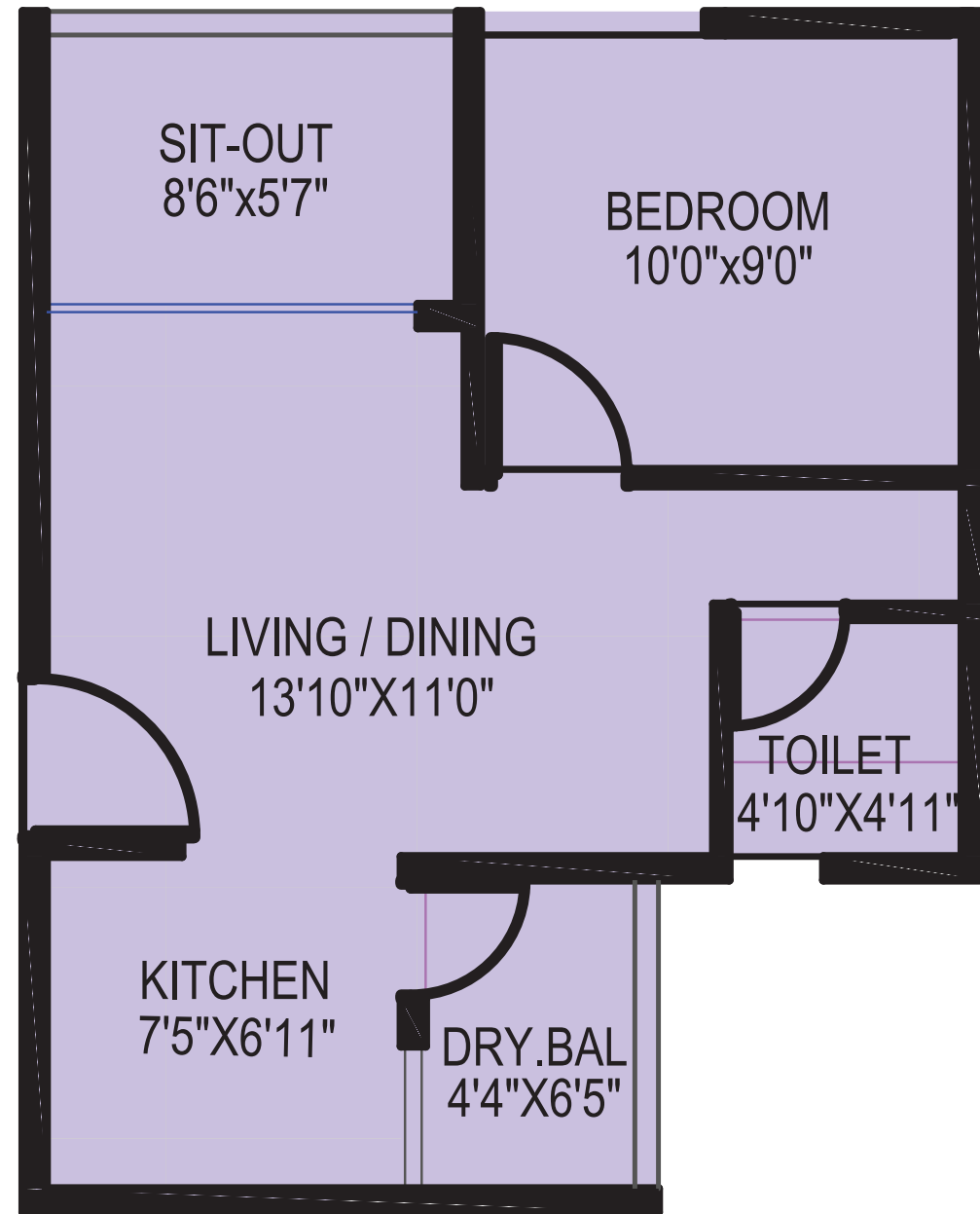
Disclaimer:

- The Floor Plan is considered as per the final sanction proposed.
- Services as per the MEP plan are subject to changes.
- Furniture if shown is for visual representation and not a part of our offering.
- RCC columns & beams position shall be as per consultant drawings and a minimum of 3 inch offset to be expected within the units.
- Possession shall be given as per sanctioned plan only.
- Refugee Area proposed on 7th & 12th Floor.
- Dimensions & sizes may vary upto 3% *

| UNIT NO. | CARPET (SMT) | BALCONY (SMT) | TOTAL CARPET (SFT) |
|----------|--------------|---------------|--------------------|
| 01 - 11 | 31.28 | 5.41 | 395 |
| 12 - 15 | 31.13 | 7.00 | 410 |



UNIT PLAN, WING - C & D



Disclaimer: The image showcasing the interior layout is prepared with furniture items, electronics, goods, accessories, etc, for the purpose of representation only. Items within the layout are not a part of our offerings along with the unit. Location layout for services may change as per the MEP consultant plan. RCC columns & beams position shall be as per consultant plans within the units.

SPECIFICATIONS



1. LIVING ROOM



- TV Point
- Video Door Phone
- Internet Connection Provision
- DTH Connection Provision
- Vitrified Floor Tiles

2. MASTER BEDROOM



- TV Point
- AC PowerPoint
- Glass Wall (Aluminium Section)
- Aluminium Grid Glass Panels
- Vitrified Floor Tiles

3. BATHROOM



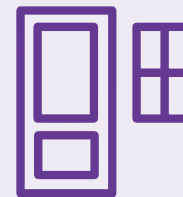
- Premium Sanitary Fittings (Soncera / Hindware equivalent)
- CP Fittings (Jaquar / ESCO / Johnson equivalent)
- Wall Mixer with Shower Fitting
- Wall Tile up to Lintel Level
- Anti-Skid Floor Tiles
- Granite / Wooden Door Frame
- Exhaust Fan Provision
- Water Heater Provision
- Western Toilet

4. KITCHEN & DRY BALCONY



- Granite Platform
- SS Kitchen Sink
- Wall Tile up to 2 ft.
- Vitrified Floor Tiles
- Refrigerator Electrical Point
- Washing Machine Electrical Point
- Dedicated Wet Area
- Anti-Skid Flooring and Wall Tile for Dry Balcony

5. DOORS & WINDOWS



- Aluminum Section Sliding Doors for Balcony
- Aluminium Section Windows
- Laminated Wooden Door with Wooden Door Frame for Entrance & Bedroom
- Granite Stone Frames for Toilet with Wooden Door
- Quality Hardware Fittings

6. ELECTRICAL



- Ample light points
- Standard make switches
- Concealed fire-resistant copper wiring
- Circuit breakers

7. SURFACE FINISHES



- External Walls: Double-coat plaster with APEX paint finish
- Internal Walls (for the unit): Gypsum finish with OBD
- Common Area: Combination of Plaster, Gypsum, Sanla, and Texture
- Common Area: Vitrified tiles

8. SECURITY:



- Entrance Checkpoint Security
- Intercom System
- CCTV Surveillance
- Fire Fighting System
- Video Door Phone
- Intercom System

9. OTHER SERVICES



- Open Waste Management System
- Sewage Treatment Plant
- Rainwater Harvesting
- Sanitary Facility for Maids and Service Staff
- Lightning Arrestors
- Automatic Elevators



Artistic impression may differ from project offering.

A Project by:



Site Address: S.no 2/1 2A, 2/2B, 2/2C/1A, 2/2C,1B,2/2C/2/2C/1, Mohammadwadi,
Nyati Estate, Next to Majestique Euriska, Pune - 411060

Office Address: Sr. No. 52/A/2 Mula Road, Khadki, Pune - 411003

www.khushvista.com | sales@khushvista.com

CREDITS - Architect: **Element 5** | Structural Consultant: **Structure Vision** | Landscape: **Eco Envisage Pvt. Ltd.**

This project has been registered via MahaRERA Registration Number P52100030740 and details are available on the website <https://maharera.mahaonline.gov.in> under registered projects.

All the renders used are an artist's impression. The image has been used for representation only. | *T&C Apply.

DISCLAIMER: The contents herein contains promotional material related to current and future phases of project. The offerings outlined in the brochure in whatever form may not be a part of initial phase of project and may be delivered in later phases or on completion of project. You are required to verify all details by physically visiting the project site. All images and renderings are artistic impressions and not real / actual as it may differ in reality. Refer to all footnotes, disclaimers, terms conditions, comments and request for clarification for any doubts or queries from management team. The brochure is purely conceptual and not a legal offering or part of any agreement. The promoter reserves rights to add, delete or alter any specification in the endeavor to make improvement as and when required.



MahaRERA No.
P52100030740