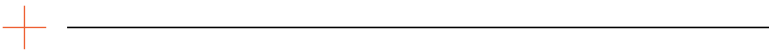




# LivingWalls True North

Unusually Flexible  
Apartments in  
North Bengaluru

RERA PRM/KA/RERA/1251/446/PR/050824/006961 [Phase 1]



**A balcony is just a space.  
A terrace garden is a lifestyle.**

Unlike the typical balcony that offers little more than a view, our terrace gardens are designed to enhance your daily life. These spaces are as versatile as they are spacious, seamlessly connecting to your living and dining areas—and in some flats, even the kitchen.

That's why, by popular demand, we're bringing back our most beloved feature: the large terrace garden. Ranging from 118 to 308 square feet, these outdoor spaces are designed to offer you the luxury of a villa in the sky.







## By overwhelming demand, terrace gardens return.

---

### Staggered Double Height Terrace Gardens

Imagine hosting 30 to 40 guests with ease, as your terrace garden extends your living area into a beautiful outdoor space.



---

### Landscaped urban plazas

Whether you're looking to enjoy a coffee at the café, engage in a quick game at the sports facility, or simply take a stroll through the plaza gardens, this is a space that brings the outdoors and community life together.





## **Pedestrian-friendly design for enhanced safety**

From the entrance gate to the basements and drop-off points, this intelligently designed access ensures minimal traffic movement while maximizing pedestrian space.



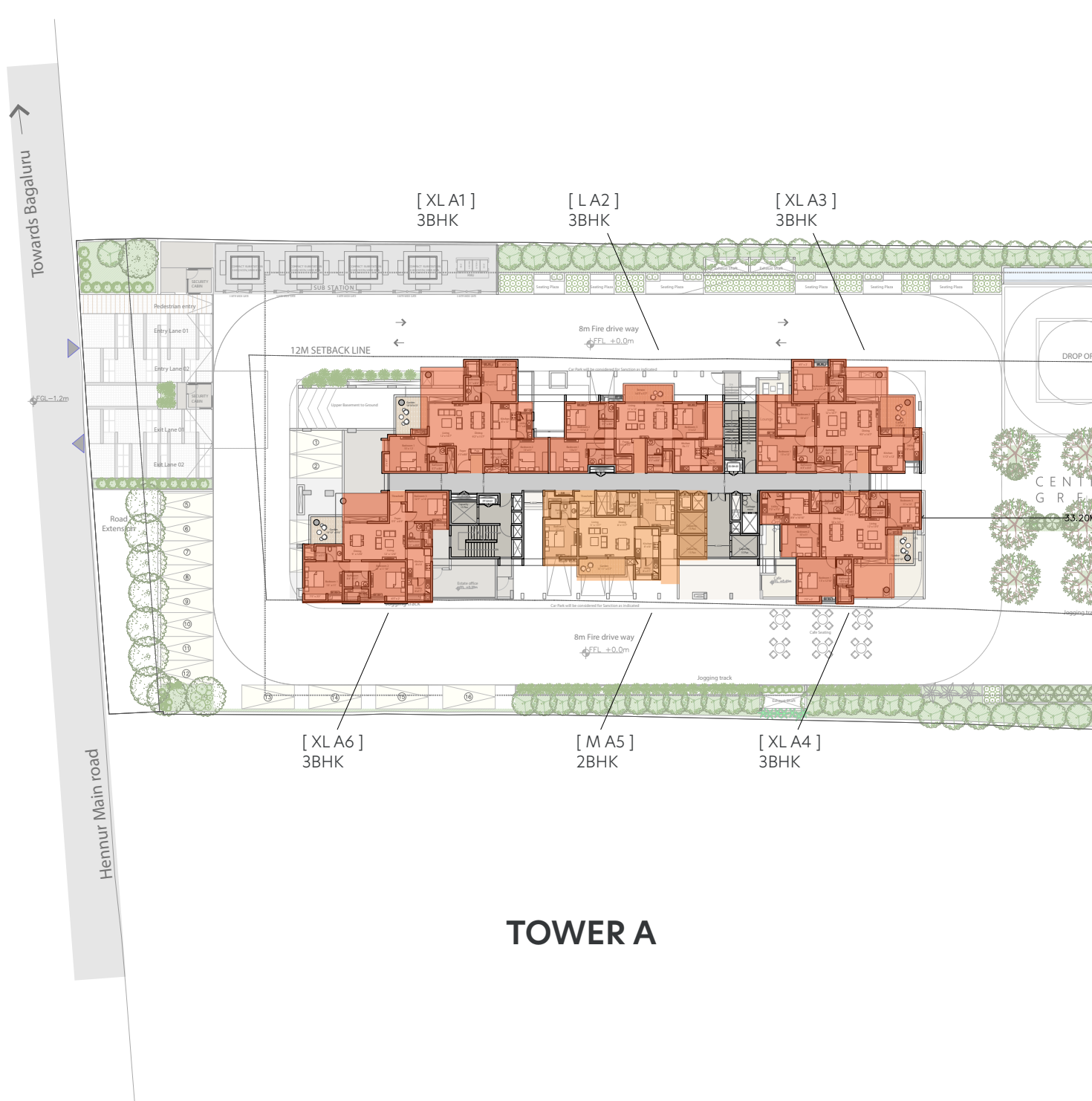


---

## Two iconic towers with staggered double-height terrace gardens

The silhouette of the two towers are framed by the signature forms created by staggered double-height terrace gardens.





## TOWER A

**You're getting some of the largest flats in the city, designed with flexibility to suit your lifestyle.**

True North offers flats that are not just spacious but also flexible enough to adapt to your lifestyle. Whether you prefer open spaces or a more traditional layout, you can tweak your flats to match your family's unique needs.



## XXXL Your Expectations

Designed for families that value space and comfort.

## Designed for Flexibility

Not just spacious but also flexible enough to adapt to your lifestyle.





**EVEN FLOOR**



**ODD FLOOR**



East Facing Main Door

Corner Apartment

Terrace Garden

Flexible Foyer

Split Kitchen

Flexible 4th Bedroom

Flexi-Pod [Home Office / Maid's Room / Store]

Private Balcony in Master Bedroom

[ XXXL B2 ]

**Villa In The Sky**  
**4BHK + Flexi-Pod**

*3136sft*



East Facing Main Door

Corner Apartment

Terrace Garden

Flexible Foyer

Split Kitchen

Flexible 4th Bedroom

Flexi-Pod [Home Office / Maid's Room / Store]

Private Balcony in Master Bedroom

[ XXXL B3 ]

Villa In The Sky  
4BHK + Flexi-Pod

3179sft



**EVEN FLOOR**



**ODD FLOOR**



East Facing Main Door

Terrace Garden

Flexible Foyer

Flexible Kitchen

Flexi-Pod [Home Office / Store]

Private Balcony in Master Bedroom

[ XXL B1 ]

**Villa In The Sky  
3BHK + Flexi-Pod**

*2497sft & 2549sft*



- North Facing Main Door
- Terrace Garden
- Flexible Kitchen
- Flexible 3rd Bedroom
- Flexi-Pod [Home Office / Store]
- Private Balcony in Master Bedroom

[ XXL B4 ]

## Villa In The Sky 3BHK + Flexi-Pod

2416sft & 2427sft



**EVEN FLOOR**



**ODD FLOOR**



East Facing Main Door

Corner Apartment

Terrace Garden

Flexible Kitchen

Flexible Foyer

[ XL A1 ]

**Terrace Garden  
3BHK**

*2032sft & 2069sft*



**EVEN FLOOR**



**ODD FLOOR**



East Facing Main Door

Corner Apartment

Terrace Garden

Flexible 3rd Bedroom

Flexible Foyer

**[ XL A3 ]**

**Terrace Garden  
3BHK**

*2068sft & 2089sft*



**EVEN FLOOR**



**ODD FLOOR**

North Facing Door

Corner Apartment

Terrace Garden

[ XL A4 ]

**Terrace Garden  
3BHK**

*1924sft & 2028sft*



North Facing Door  
Corner Apartment

Terrace Garden  
Flexible 3rd Bedroom

[ XL A6 ]

Terrace Garden  
3BHK

1877sft & 1953sft



East Facing Door

Terrace Garden

Flexible Kitchen

Flexible Foyer

Flexible 3rd Bedroom

[ L A 2 ]

The Perfect  
3BHK

1 Variation at 1833sft



North Facing Apartment

Flexible Kitchen

Flexible 2nd Bedroom

[ M A5 ]

**The Perfect  
2BHK**

*1 Variation at 1471sft*



## You're getting some of the largest flats in the city, designed with flexibility to suit your lifestyle.

At True North, we offer some of the most spacious flats in the city. Our XXXL-sized flats are designed to give you the space you need to live comfortably, while enjoying the luxury and convenience of high-rise living. Think of it as villa-style living, but in the sky, offering unmatched space in an urban setting.

Thoughtful design, offering unmatched space with the right flexibility.

*Details in the brochure are subject to change\**



### Site Address

Sy. No. 162/1 and 161/2,  
Hennur Bagalur Main Road,  
Bidarahalli Hobli,  
Bengaluru - 560 077.

### Registered Office

VDB Infra & Realty Pvt. Ltd.  
842/A, 100Ft. Road, Indiranagar,  
Bengaluru - 560 038.

<https://livingwalls.in>

CREDAI