



Dazzling to delight you





Where the azure sky embraces the lush open greens, the immaculately designed facilities embrace the plush amenities, and where living is sheer ecstasy, that's Siddha Galaxia.

Just like stars, planets and other heavenly bodies make up an eternal life cycle system in a galaxy . . . Siddha Galaxia brings together ultimate delights under one umbrella. It is a happy communion for over 12,000 people.

**Come, live a heavenly life . . .
in a galaxy.**



Rooftop Skywalk by twilight

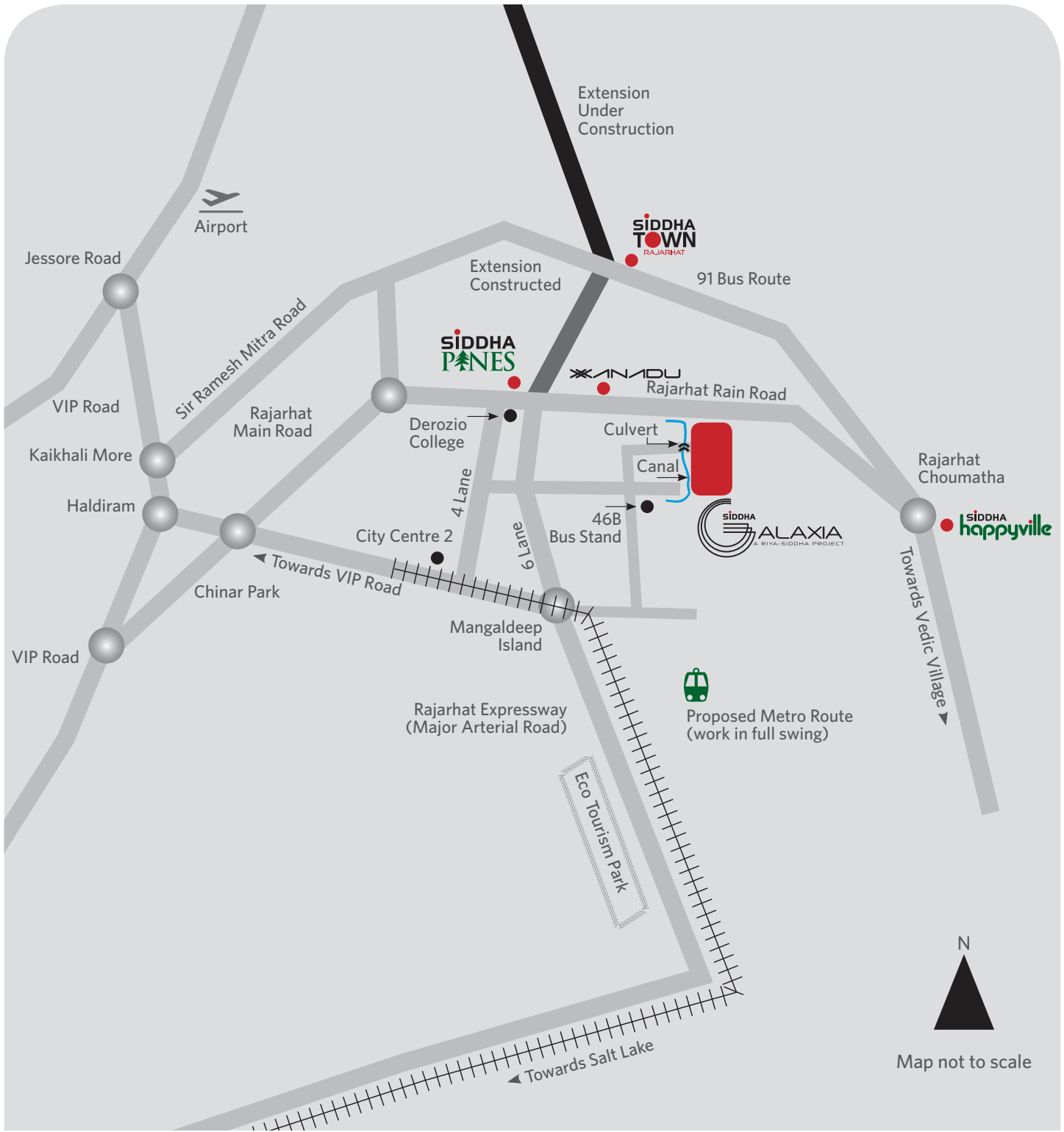


Rooftop Skywalk and Club by day

**A constellation
of sophistication,
comfort and peace**

With sprawling greens, Siddha Galaxia offers you more than a cluster of houses. It is a heavenly environment with many proposed towers.

With state-of-the-art amenities, easy connectivity and a convenient location, Siddha Galaxia is heaven-sent.



Reach for the stars

With serene surroundings and a safe neighbourhood, Siddha Galaxia is the most sought after destination in Rajarhat.

It is located conveniently on the Rajarhat Main Road with the Expressway extension only 2 kilometres away. The airport is at a distance of only 5 kilometres. The project is well-connected with Salt Lake Sector V and New Town.



Aerial view by twilight



Towers with landscape by day



Phase I Towers ~ Actual photo

The first star of the Galaxy

The inception of Siddha Galaxia began with Siddha Sphere ... 6 towers with 361 apartments and star-studded features that promised an elevated lifestyle.

A galaxy-full of amenities were added to it with a 43,000+ sq ft world-class residents' club.

Siddha Sphere, a completed phase, is a part of Siddha Galaxias.

If you are looking for more space to unfurl your dreams, Siddha Galaxia will surely help you to step into a galaxy of infinitely dazzling luxury.



Rooftop Skywalk by day



Fitness Zone

The orbit of life's pleasures

Welcome to the **world's longest Rooftop Skywalk!** At a length of **450 m**, this opulent serpentine marvel has a minimum width of **7 m** and a maximum width of **17 m**.

Sprawling a total area of **60,000 sq ft** the **Skywalk**

at Siddha Galaxia, like an orbit, connects the towers and offers ample greenery. Complete with jogging tracks, play area and sitting zones the Skywalk is a space for you to start every day afresh.

Approx 1 km long Joggers' Track on the world's longest Rooftop Skywalk



Get together with the stars, at the Rooftop Party Lawn on the Skywalk.





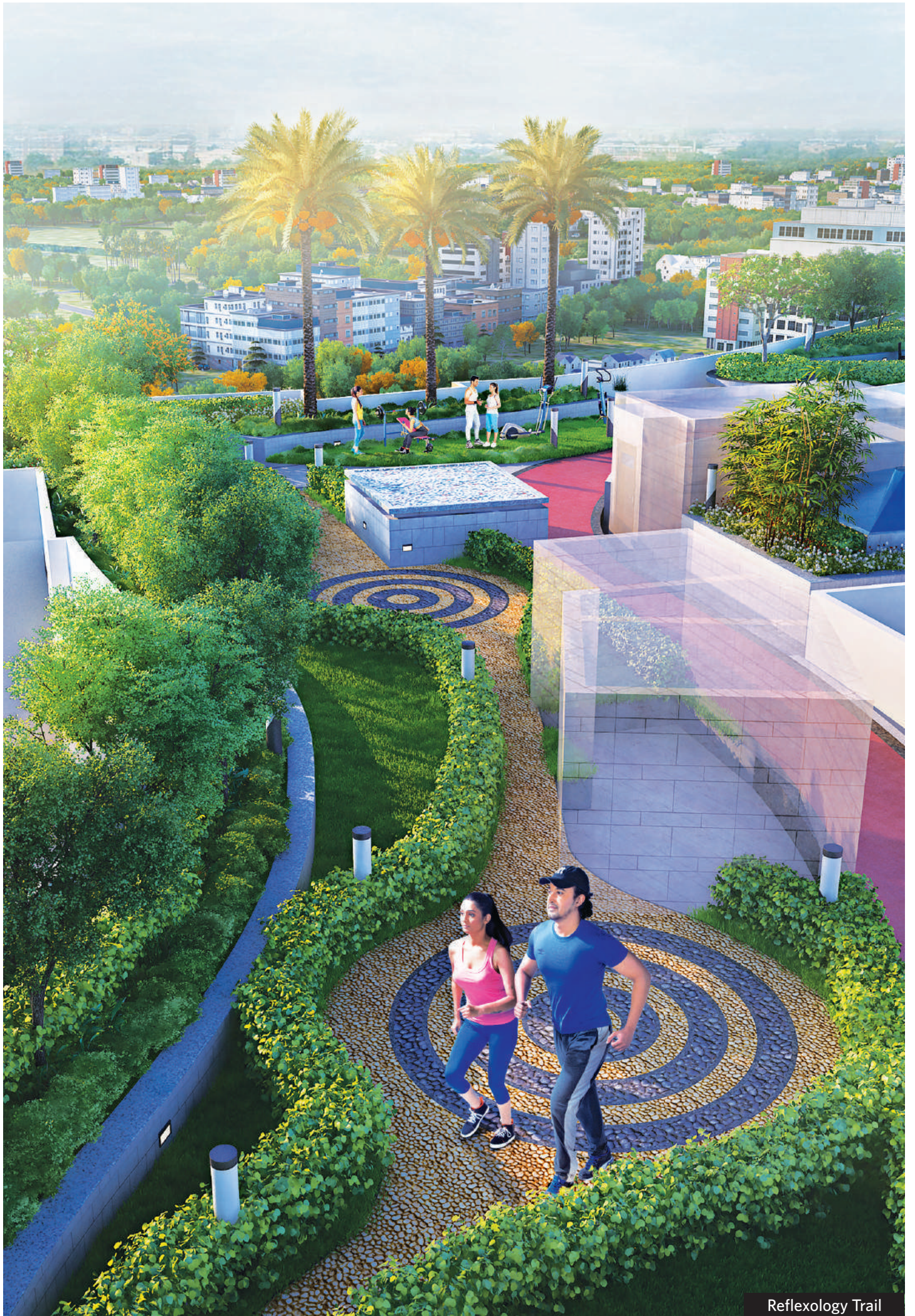
Organic Farmyard



Chillout Lounge



Senior Citizens' Corner



Reflexology Trail



Sculpture Garden



Kids' Play Area



Recluse

A gripping view every morning, lush greens to unwind in after a hard day's work and starry nights are experiences that only Siddha Galaxia can offer.

Skywalk highlights

- Joggers' Track
- Kids' Play Area
- Senior Citizens' Corner
- Organic Farmyard
- Sculpture Garden
- Party Lawn
- Turf Lawn
- Reflexology Trail
- Fitness Zone
- Skyplex
- Recluse
- Chillout Lounge (outdoor)

A star-studded Club

The luxe club of 43,000 + sq ft at Siddha Galaxia can captivate your core with a host of enthralling facilities.



Club by twilight view



Gymnasium



Swimming Pool



Squash Court



Indoor Games Room

The building is multi-layered with lounge facilities on all blocks, an exclusive hall and a party lawn that will be the party lover's paradise.

Get pampered to your core at the spa, steam and massage room or let your fitness streak loose at the health club and gymnasium.

The swimming pool at Siddha Galaxia offers a cool retreat with each refreshing dip. Add to that the Aqua Aerobics facility.

As you unwind with badminton, squash or tennis at the court atop the Multi-level Car Park, your kids can have fun at the play zone.

You can also choose to be at the multi-activity room. Make the most of your weekends when you dance, draw, cook or play music. Many starry affairs await.

Other Club facilities

- Library-cum-lounge
- Games room
- Coffee shop with WiFi
- Crèche and toddlers' zone
- AC banquet hall
- Yoga and meditation zone



Towers and Club by twilight



The greener side of the galaxy

Enjoy the pristine beauty of Nature at Siddha Galaxia.

Whether you stroll along the scenic pathways or have a quick run on the Joggers' Track, the refreshing vibes of the lush greenery all around the Skywalk will captivate you.

There's a beautiful sundeck too where you can enjoy a nice conversation or simply rejuvenate your soul.

Special feature

- Rooftop Skywalk

A galaxy of amenities

- Joggers' Track ~ Rooftop Skywalk
- Landscaped garden | Sundeck
- Spa, steam and massage room
- Yoga and meditation zone
- Health club | Gymnasium
- Swimming pool
- Aqua aerobics
- Badminton court
- Tennis court | Squash court
- Multi-activity room
- Library-cum-lounge
- Games room | Coffee shop with WiFi
- Crèche and toddlers' zone
- AC banquet hall



Towers by night

A galaxy-full of conveniences

Siddha Galaxia is sure to cater to your every need.

Facilities and conveniences

- Advanced fire-fighting system
- Intercom
- Sewage treatment plant
- Rainwater harvesting system
- Power backup for common areas
- 24/7 water supply
- 24/7 security and surveillance system
- Elevators and stretcher elevators

Provisions

- Cable TV and broadband points
- Fresh fruits and vegetables vending area
- ATM
- Salon
- Convenio
- Solar power for some common areas
- Facility office
- Visitors' car park
- Toilets for support and maintenance staff
- Ambulance on call
- Doctor on call



Interiors



Kitchen



Toilet

Specifications

Structure

Sub Structure Earthquake resistant RCC framed structure with monolithic concrete

Door

Shutter

Solid core flush shutters

Frame Solid wooden frames

Hardware

Mortise lock and handle

Window

Anodised powder coated aluminium frames with fully glazed shutters

Flooring & Tiling

Internal

Bedroom Vitrified tiles

Living/Dining Vitrified tiles

Toilet Floor Anti-skid ceramic tiles

Toilet Wall Ceramic tiles

Kitchen Floor Anti-skid ceramic tiles

Kitchen Dado Ceramic tiles

Kitchen Counter Granite above chuddapa stone

Balcony Vitrified tiles/Anti-skid ceramic tiles

Lobby Vitrified tiles/Ceramic tiles

Lift Facia Marble/Granite/Laminate

External

Driveway/Basement/Covered car parking/

Open car parking/Courtyard

Paver block/Stamp concrete/Kota/Granite/

Grass paver/VDF (Vacuum Dewatered Flooring)

Staircase

Marble/Kota/Granite/
Cementitious tiles/Ceramic tiles

Sanitaryware

Chromium plated fittings, white, high quality porcelain fixtures

Electricals

Superior quality concealed copper (fire-resistant, low smoke) wiring. Latest modular switches and miniature circuit breakers, TV socket and broadband point.

Exterior

Latest weatherproof exterior finish



Bedroom



Open Greens

Green homes for you and the environment



Certified under IGBC's 'Green Homes' norms.

Siddha Galaxia is registered as a 'Green Homes' project by the Indian Green Building Council (IGBC). 'Green Homes' is the first rating programme developed in India, exclusively for the residential sector.



Children's Play Area

GREEN BENEFITS



Reduced energy usage and costs



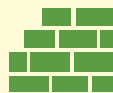
Reduced water usage through low flow fixtures



Sewage treatment, dual plumbing and water recycling



Rainwater harvesting system and grid pavers to recharge the natural water reservoirs



Use of recycled materials such as fly ash in cement and brickwork



Native and drought-tolerant species planted in the landscape



Periodic indoor air quality audits conducted during the construction phase



Improved indoor air quality through the usage of low-VOC paints, adhesives and eco-friendly chemicals



High window-to-wall ratio, guaranteeing better views and cross ventilation



Waste management and recycling set-up in place



Reduced greenhouse gas emission and carbon footprint

SIDDHA

Home is where you discover the real you. Siddha's aim is to develop high quality homes within your budget and add to your pleasant discoveries. Since its inception in 1986, Siddha has been crafting residential and commercial spaces with a difference, to make good living affordable in Kolkata, Jaipur, Bengaluru and Mumbai.

Siddha's perseverance and passion for quality homes drive it forward with every new project. Led by Group Chairman Chandra Prakash Jain and Group Managing Director Sanjay Jain, Siddha creates and sells high-quality housing in India.

Siddha believes that the magic of craftsmanship lies beyond the reality of construction. It is the ability to sculpt better lives by designing and crafting living spaces that sets Siddha apart.

RIIYA

Riya Group is a prominent business house with a number of real estate projects in and around Kolkata.

Architect



Agrawal & Agrawal, led by Jay Prakash Agrawal, the renowned architect, ranks amongst Eastern India's leading architectural practitioners. It is known for its residential apartments, commercial complexes, townships, IT infrastructure, complexes, malls, hotels, institutional and leisure projects.

Legal Adviser



Saha & Ray, Advocates, Kolkata, is a premier law firm specialising in real estate and property laws. Armed with international affiliations and global terms of reference, the firm is headed by Avik Saha and Jayati Ray.



PLANS

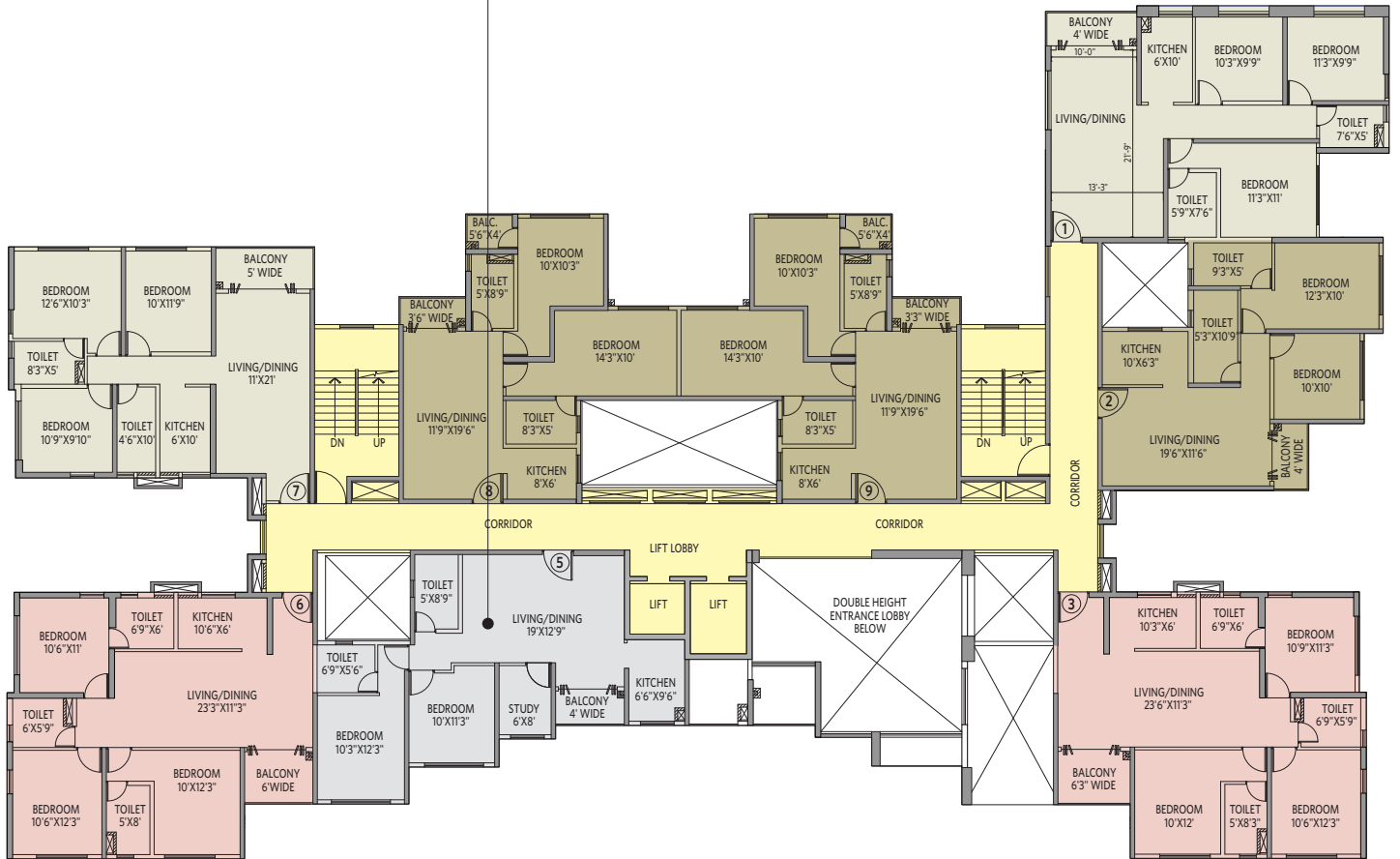
Master Plan



Legend

- ① Entry | Exit
- ② Phase I
- ③ Starwalk
- ④ Club Stella
- ⑤ Badminton Court
- ⑥ Kids' Play Area
- ⑦ Sitting Area
- ⑧ Multilevel Car Park
- ⑨ Podium

2 BHK with 2 Toilets & Study • Flat #5



Atlas ~ Block 10
First floor plan

All areas in sq ft

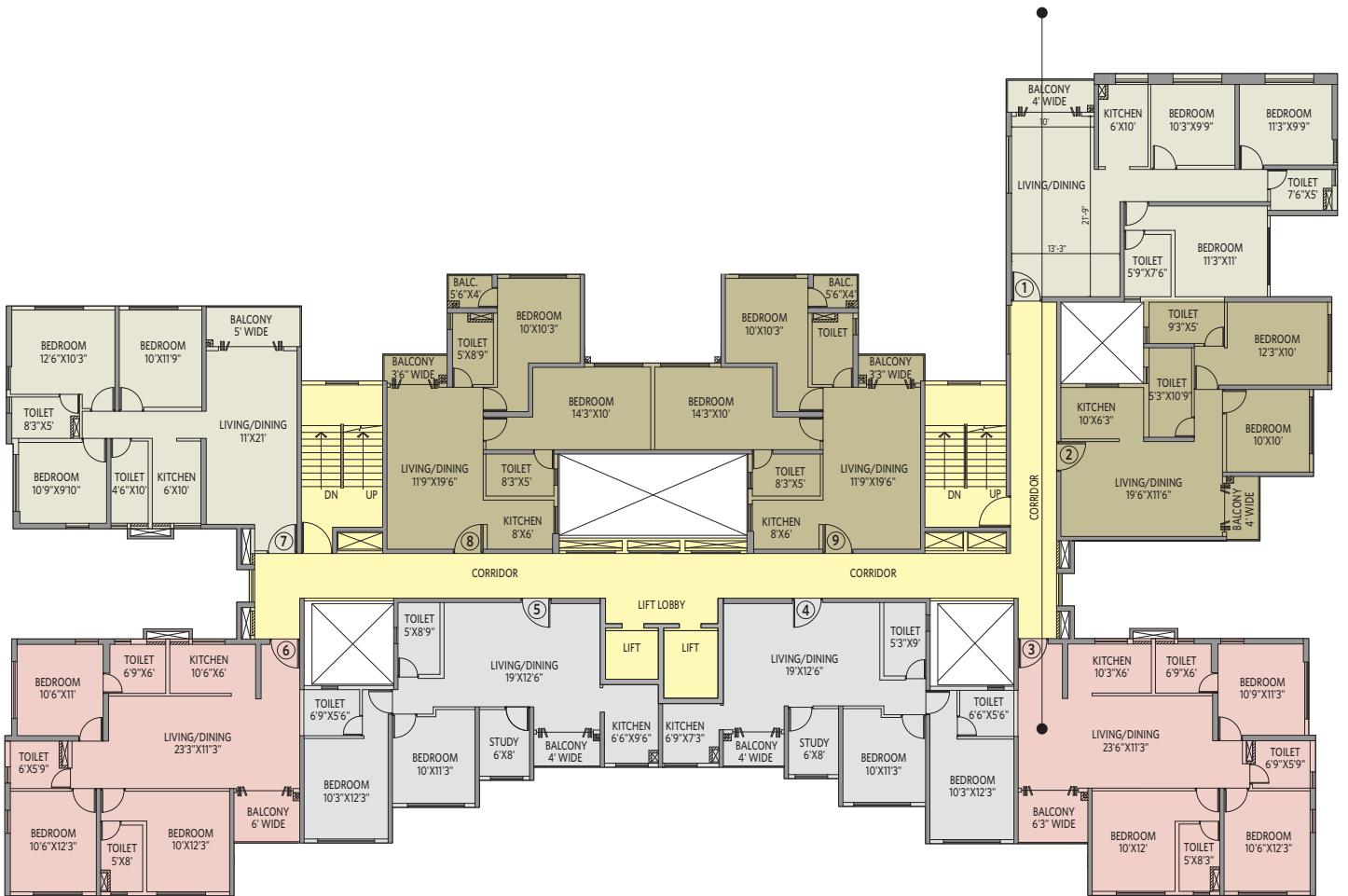
Flat #	Flat Type	BUA	CA	BA
1	3BHK+2T	991	872	42
2	2BHK+2T	779	687	30
3	3BHK+3T	1070	941	51
4	-	-	-	-
5	2BHK+2T+S	872	760	31
6	3BHK+3T	1058	938	47
7	3BHK+2T	974	848	56
8	2BHK+2T	804	684	47
9	2BHK+2T	809	687	48

SOLD OUT

BHK = Bedroom, Hall, Kitchen T = Toilet S = Study
BUA = Built-up Area, CA = Carpet Area, BA = Balcony Area



3 BHK with 3 Toilets • Flat #3



Atlas ~ Block 10
2nd-13th Typical floor plan All areas in sq ft

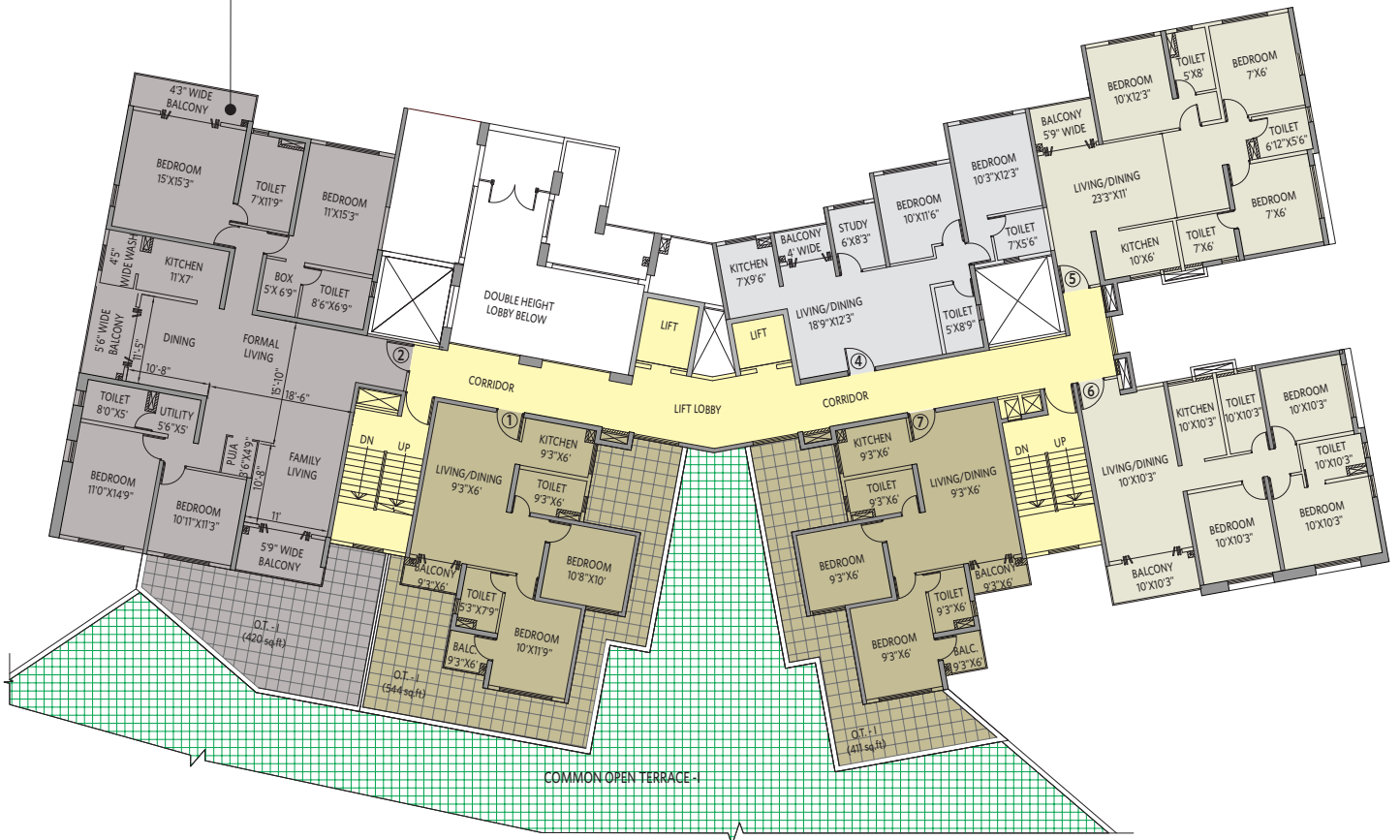
Flat #	Flat Type	BUA	CA	BA
1	3BHK+2T	991	872	42
2	2BHK+2T	779	687	30
3	3BHK+3T	1065	941	51
4	2BHK+2T+S	847	741	29
5	2BHK+2T+S	869	760	31
6	3BHK+3T	1058	938	47
7	3BHK+2T	974	848	56
8	2BHK+2T	804	683	47
9	2BHK+2T	809	687	48

SOLD OUT

BHK = Bedroom, Hall, Kitchen T = Toilet S = Study
BUA = Built-up Area, CA = Carpet Area, BA = Balcony Area



4 BHK with 3 Toilets ▪ Flat #2



Phoenix ~ Block 7E
First floor plan

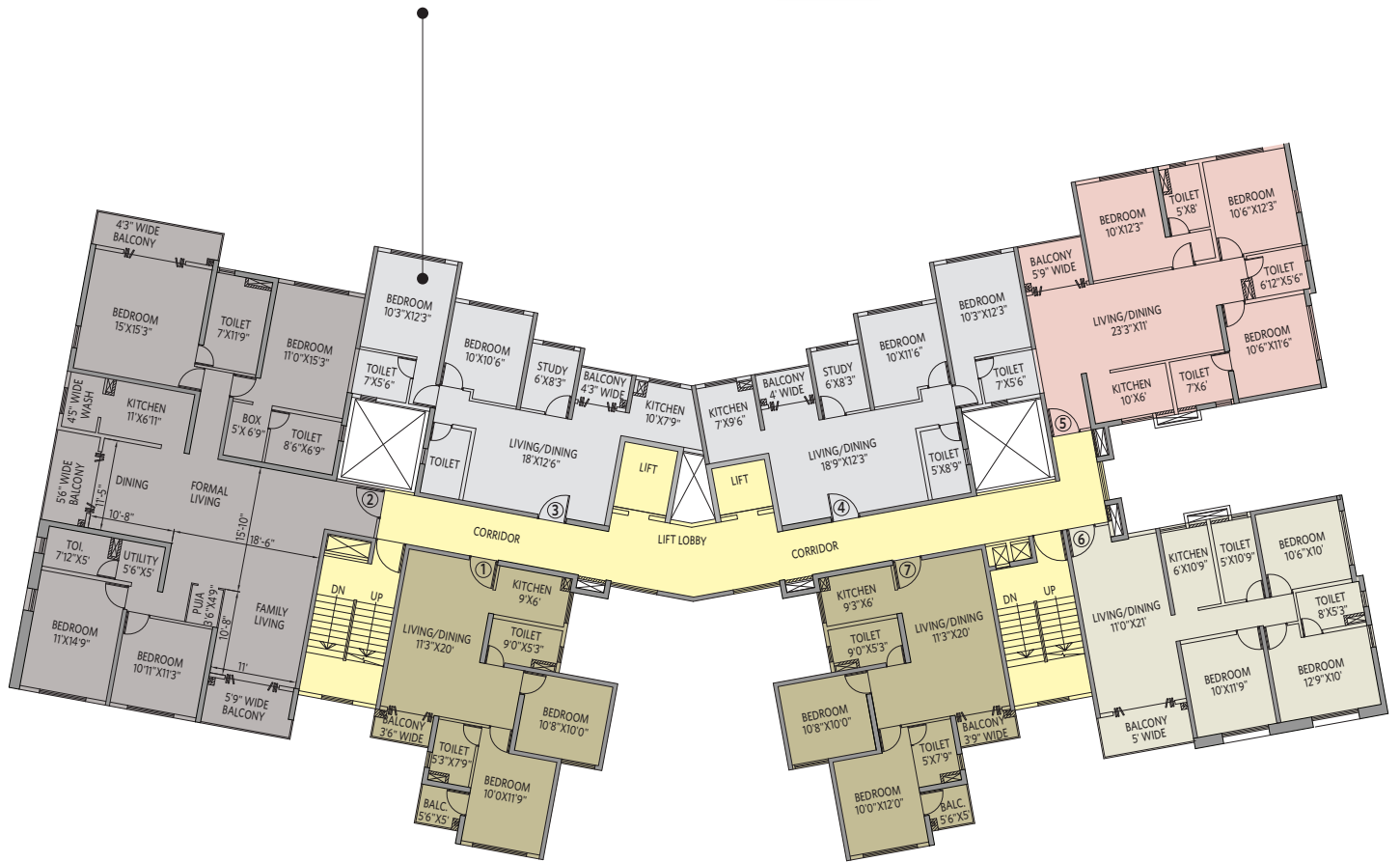
All areas in sq ft

Flat #	Flat Type	BUA	CA	BA	OT
1	2BHK+2T	802	674	52	542
2	4BHK+3T	2124	1799	198	419
3	-	-	-	-	-
4	2BHK+2T+S	855	749	26	-
5	3BHK+3T	1051	933	45	-
6	3BHK+2T	985	857	58	-
7	2BHK+2T	801	672	53	413

BHK = Bedroom, Hall, Kitchen T = Toilet S = Study
 BUA = Built-up Area, CA = Carpet Area, BA = Balcony Area,
 OT = Open Terrace



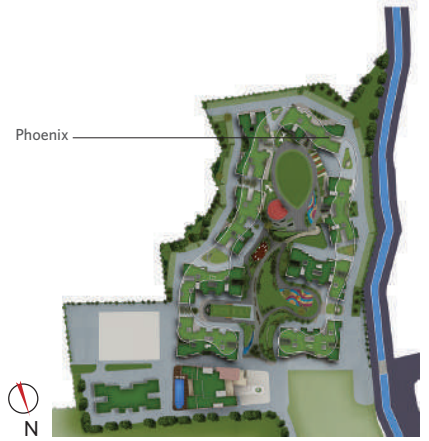
2 BHK with 2 Toilets & Study • Flat #3



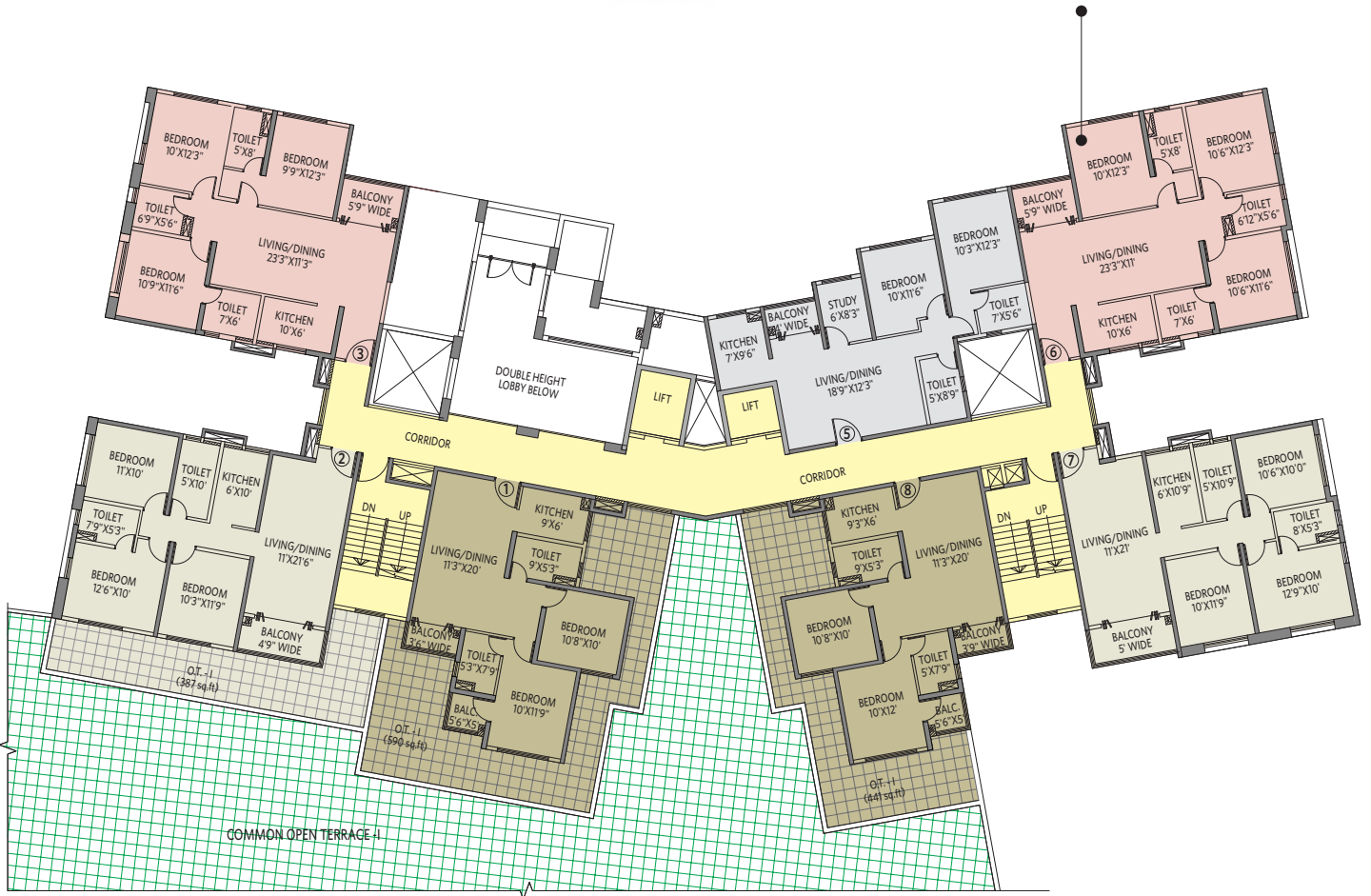
Phoenix ~ Block 7E
2nd-13th Typical floor plan All areas in sq ft

Flat #	Flat Type	BUA	CA	BA
1	2BHK+2T	802	674	52
2	4BHK+3T	2118	1799	198
3	2BHK+2T+S	839	731	26
4	2BHK+2T+S	852	749	26
5	3BHK+3T	1051	933	45
6	3BHK+2T	985	857	58
7	2BHK+2T	801	672	53

BHK = Bedroom, Hall, Kitchen T = Toilet S = Study
BUA = Built-up Area, CA = Carpet Area, BA = Balcony Area



3 BHK with 3 Toilets • Flat #6



Cygnus ~ Block 7D

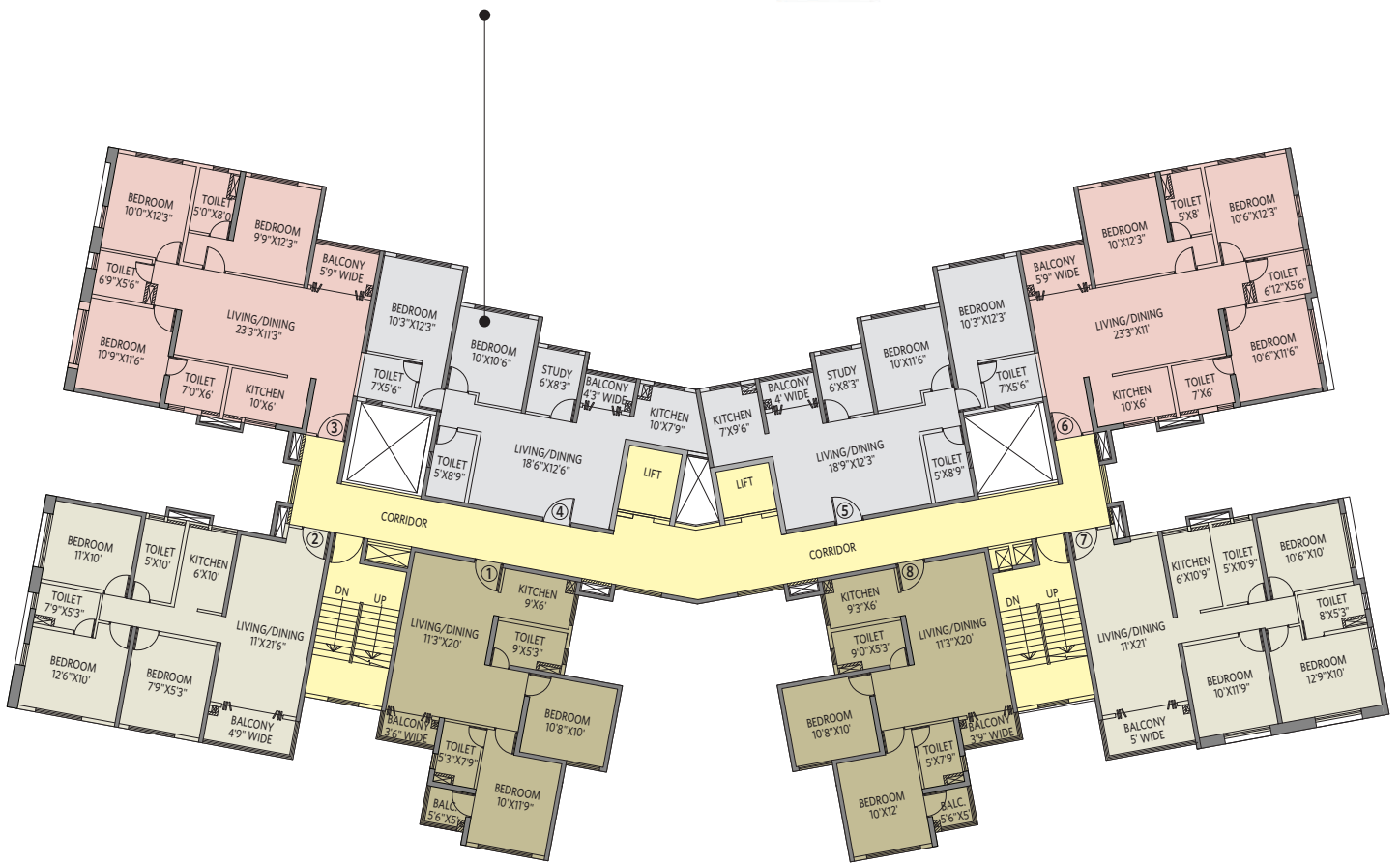
First floor plan All areas in sq ft

Flat #	Flat Type	BUA	CA	BA	OT
1	2BHK+2T	800	673	52	590
2	3BHK+2T	987	860	54	387
3	3BHK+3T	1058	931	46	-
4	-	-	-	-	-
5	2BHK+2T+S	855	749	26	-
6	3BHK+3T	1051	934	45	-
7	3BHK+2T	984	857	58	-
8	2BHK+2T	801	672	52	441

BHK = Bedroom, Hall, Kitchen T = Toilet S = Study
 BUA = Built-up Area, CA = Carpet Area, BA = Balcony Area,
 OT = Open Terrace



2 BHK with 2 Toilets & Study • Flat #4

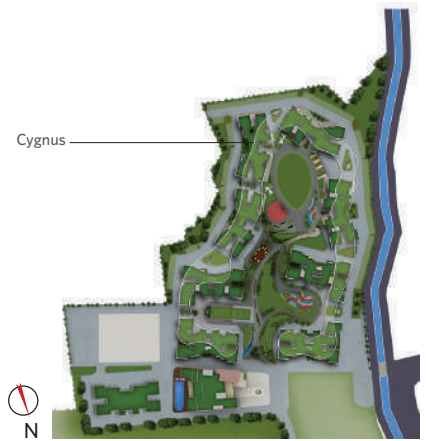


Cygnus ~ Block 7D

2nd-13th Typical floor plan All areas in sq ft

Flat #	Flat Type	BUA	CA	BA
1	2BHK+2T	800	673	52
2	3BHK+2T	987	860	54
3	3BHK+3T	1053	931	46
4	2BHK+2T+S	838	732	26
5	2BHK+2T+S	852	749	26
6	3BHK+3T	1051	934	45
7	3BHK+2T	984	857	58
8	2BHK+2T	801	672	52

BHK = Bedroom, Hall, Kitchen T = Toilet S = Study
 BUA = Built-up Area, CA = Carpet Area, BA = Balcony Area



3 BHK with 2 Toilets • Flat #7



Orion - Block 7C
First floor plan

All areas in sq ft

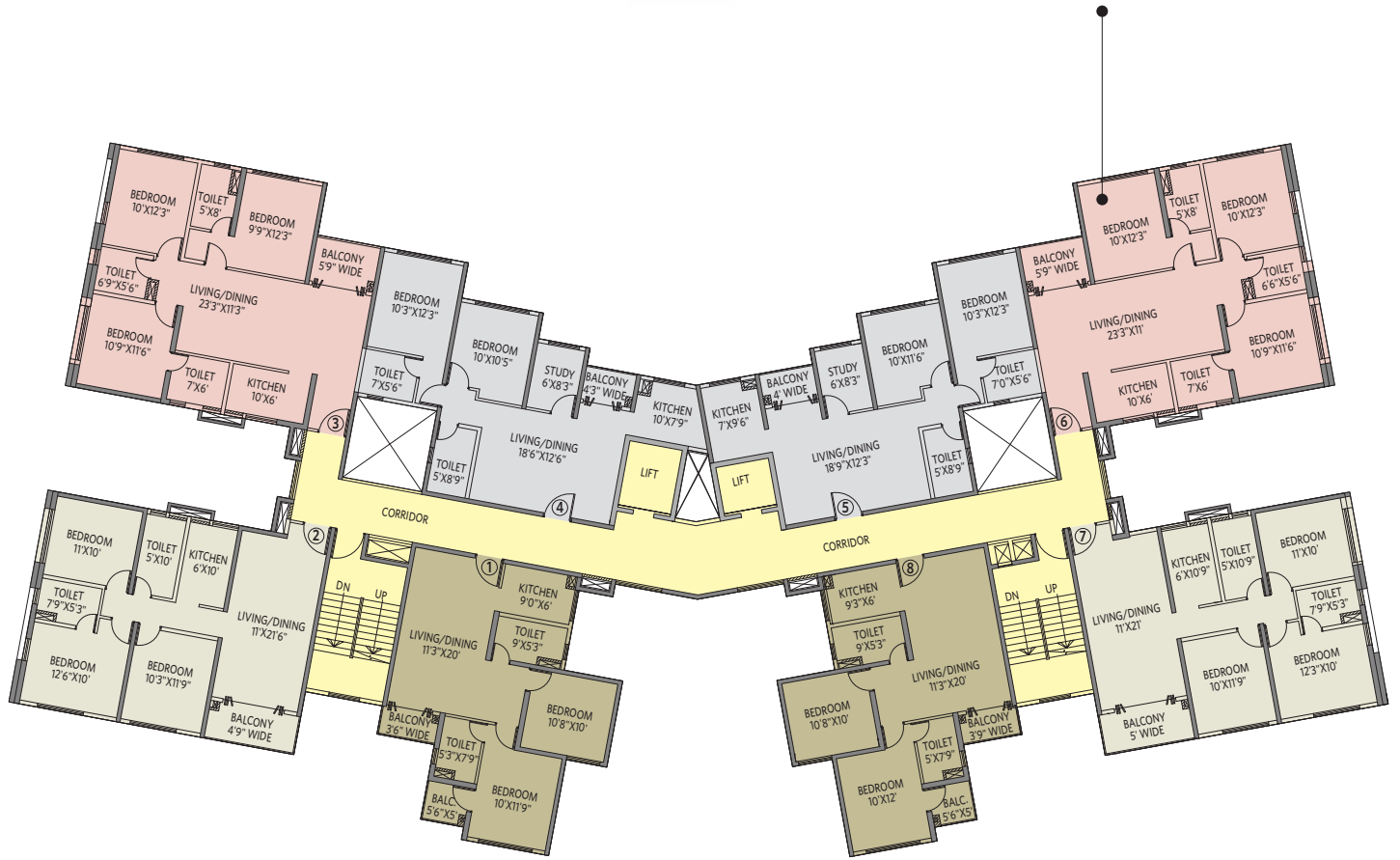
Flat #	Flat Type	BUA	CA	BA	OT
1	2BHK+2T	800	671	52	-
2	3BHK+2T	987	860	54	-
3	3BHK+3T	1058	931	46	-
4	-	-	-	-	-
5	2BHK+2T+S	855	749	26	-
6	3BHK+3T	1048	928	45	-
7	3BHK+2T	980	851	58	477
8	2BHK+2T	801	672	53	301

SOLD OUT

BHK = Bedroom, Hall, Kitchen T = Toilet S = Study
BUA = Built-up Area, CA = Carpet Area, BA = Balcony Area,
OT = Open Terrace



3 BHK with 3 Toilets • Flat #6



Orion - Block 7C
2nd-13th Typical floor plan All areas in sq ft

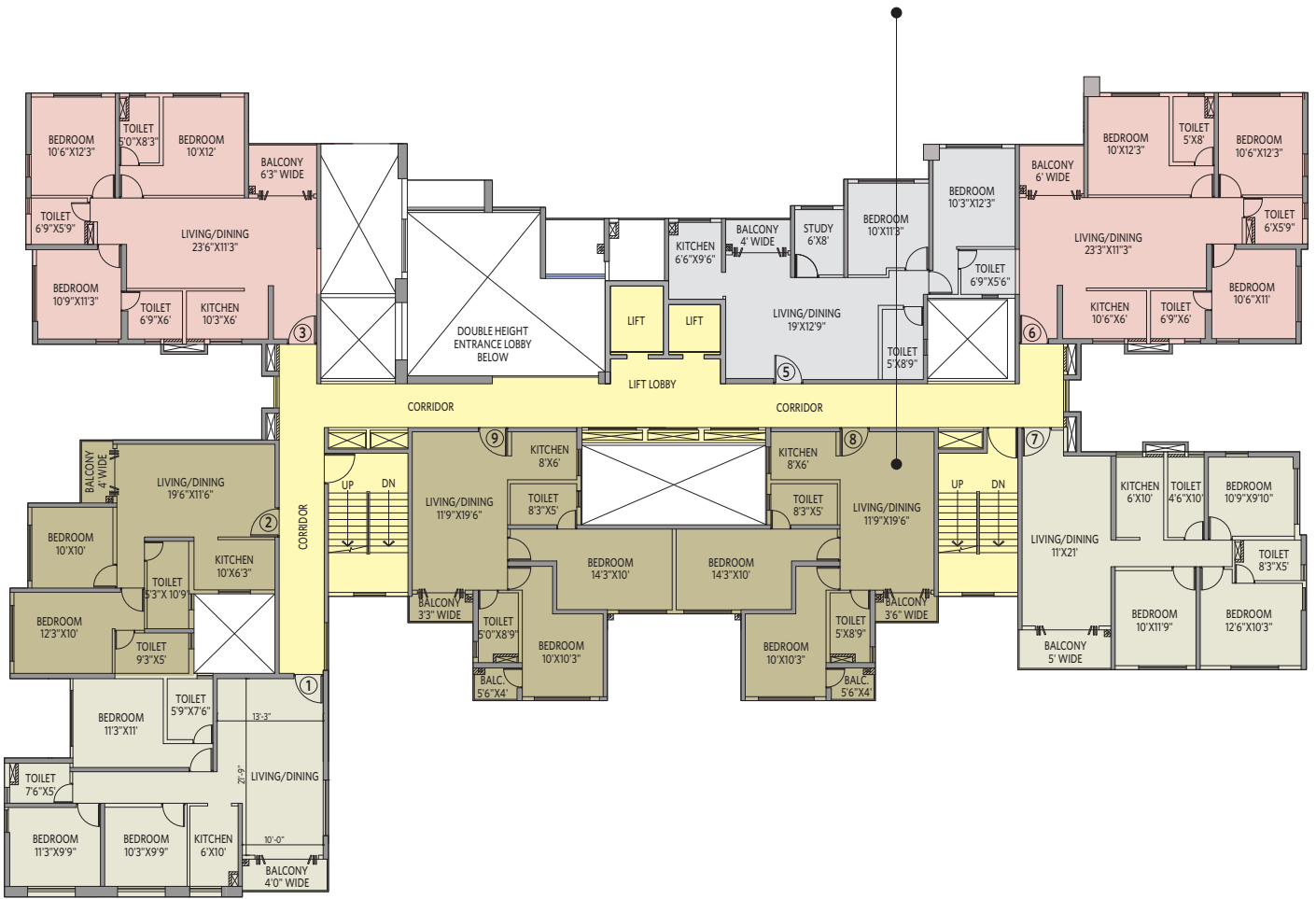
Flat #	Flat Type	BUA	CA	BA
1	2BHK+2T	800	671	52
2	3BHK+2T	987	860	54
3	3BHK+3T	1053	931	46
4	2BHK+2T+S	838	732	26
5	2BHK+2T+S	852	749	26
6	3BHK+3T	1048	928	45
7	3BHK+2T	980	851	58
8	2BHK+2T	801	672	53

SOLD OUT

BHK = Bedroom, Hall, Kitchen T = Toilet S = Study
BUA = Built-up Area, CA = Carpet Area, BA = Balcony Area



2 BHK with 2 Toilets • Flat #8



Bianca ~ Block 7B

First floor plan

All areas in sq ft

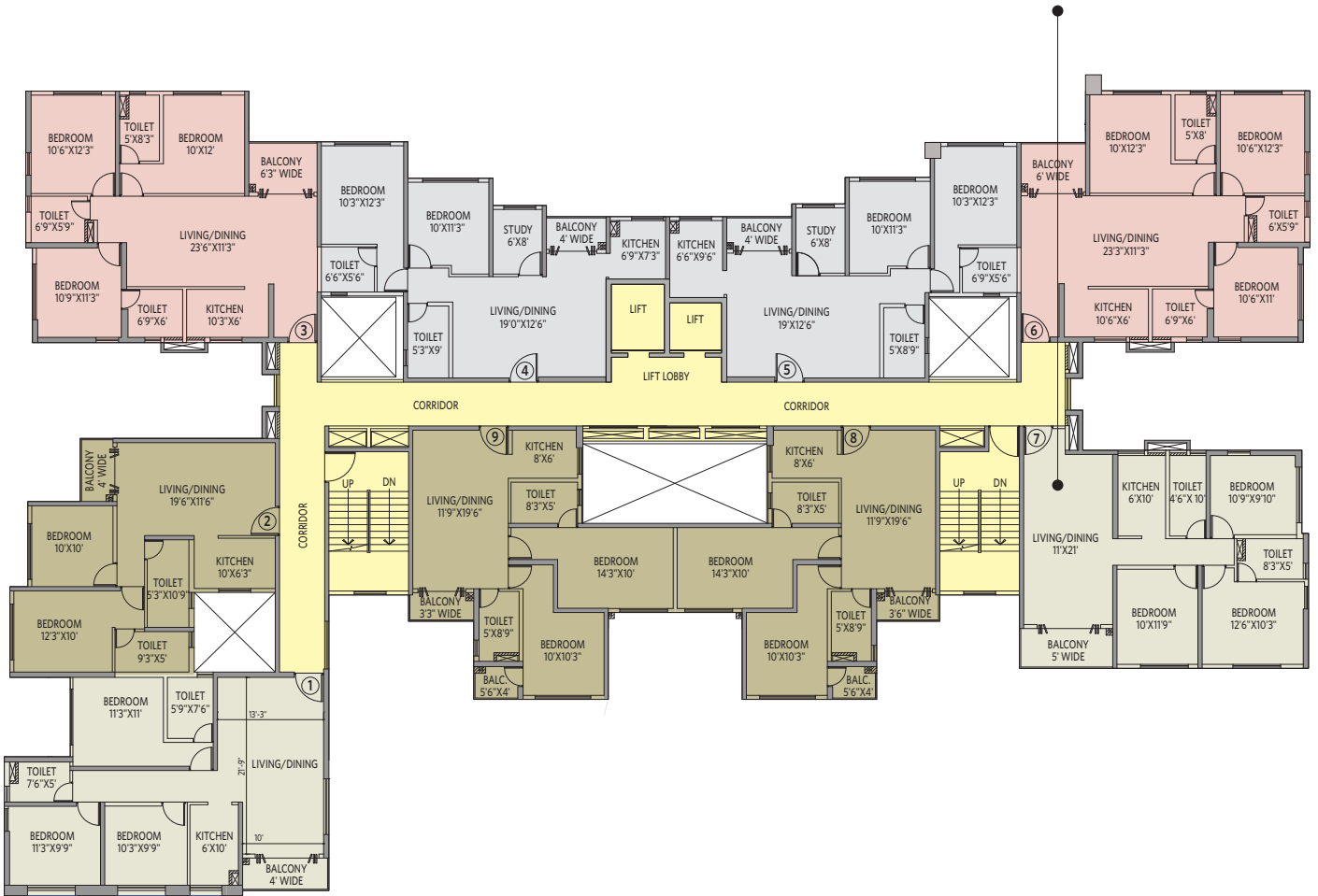
Flat #	Flat Type	BUA	CA	BA
1	3BHK+2T	991	872	42
2	2BHK+2T	779	687	30
3	3BHK+3T	1070	941	51
4	-	-	-	-
5	2BHK+2T+S	873	759	31
6	3BHK+3T	1058	938	47
7	3BHK+2T	974	848	56
8	2BHK+2T	804	684	47
9	2BHK+2T	809	687	48



BHK = Bedroom, Hall, Kitchen T = Toilet S = Study
 BUA = Built-up Area, CA = Carpet Area, BA = Balcony Area



3 BHK with 2 Toilets • Flat #7



Bianca ~ Block 7B

2nd-13th Typical floor plan All areas in sq ft

Flat #	Flat Type	BUA	CA	BA
1	3BHK+2T	991	872	42
2	2BHK+2T	779	687	30
3	3BHK+3T	1065	941	51
4	2BHK+2T+S	847	741	29
5	2BHK+2T+S	869	759	31
6	3BHK+3T	1058	938	47
7	3BHK+2T	974	848	56
8	2BHK+2T	804	684	47
9	2BHK+2T	809	687	48

SOLD OUT

BHK = Bedroom, Hall, Kitchen T = Toilet S = Study
 BUA = Built-up Area, CA = Carpet Area, BA = Balcony Area



2 BHK with 2 Toilets • Flat #9



Ophelia ~ Block 7A

First floor plan

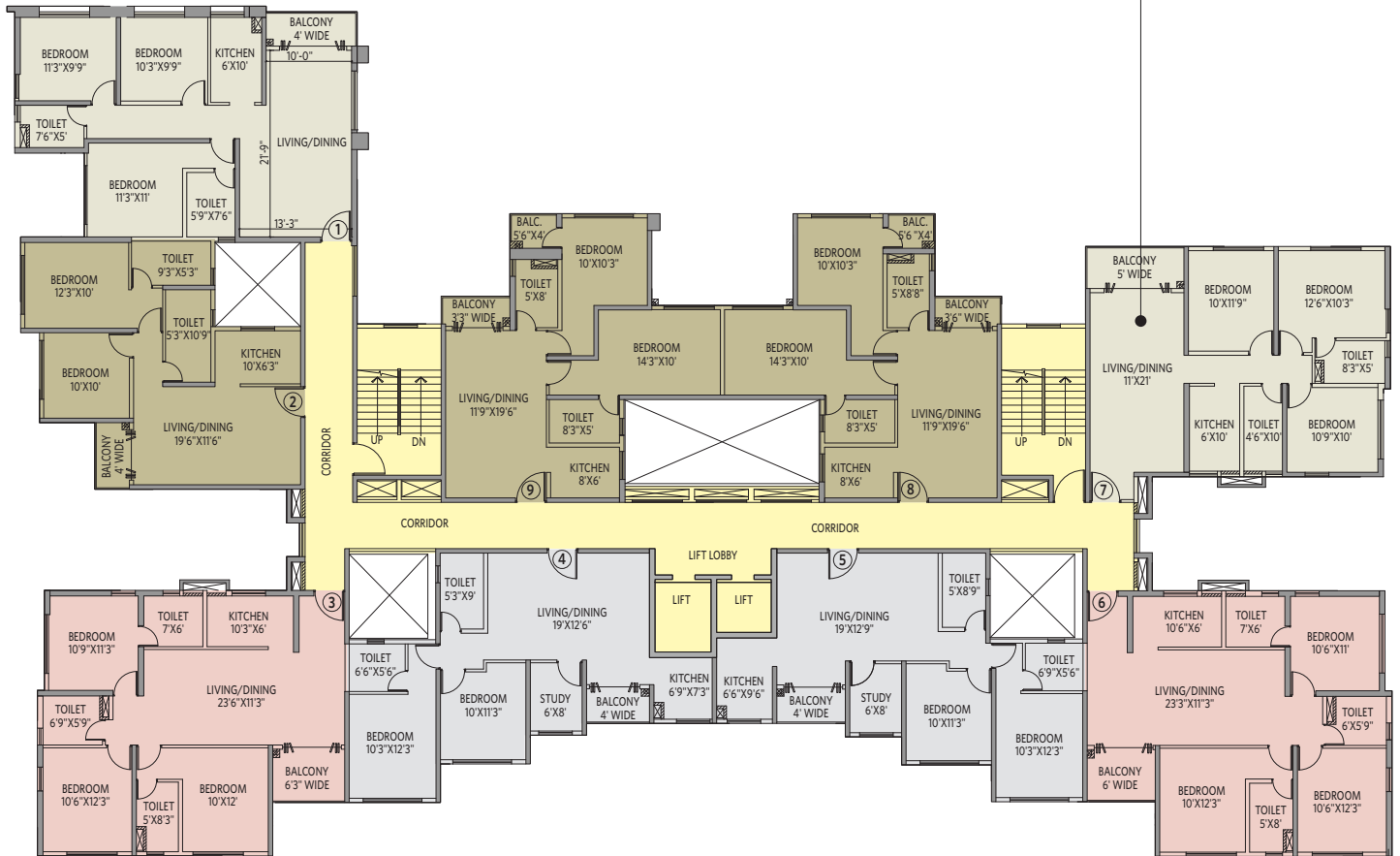
All areas in sq ft

Flat #	Flat Type	BUA	CA	BA
1	3BHK+2T	994	875	42
2	2BHK+2T	778	687	30
3	3BHK+3T	1070	941	51
4	-	-	-	-
5	2BHK+2T+S	871	760	31
6	3BHK+3T	1058	938	47
7	3BHK+2T	974	848	56
8	2BHK+2T	804	683	47
9	2BHK+2T	809	683	48

BHK = Bedroom, Hall, Kitchen T = Toilet S = Study
 BUA = Built-up Area, CA = Carpet Area, BA = Balcony Area



3 BHK with 2 Toilets • Flat #7



Ophelia ~ Block 7A

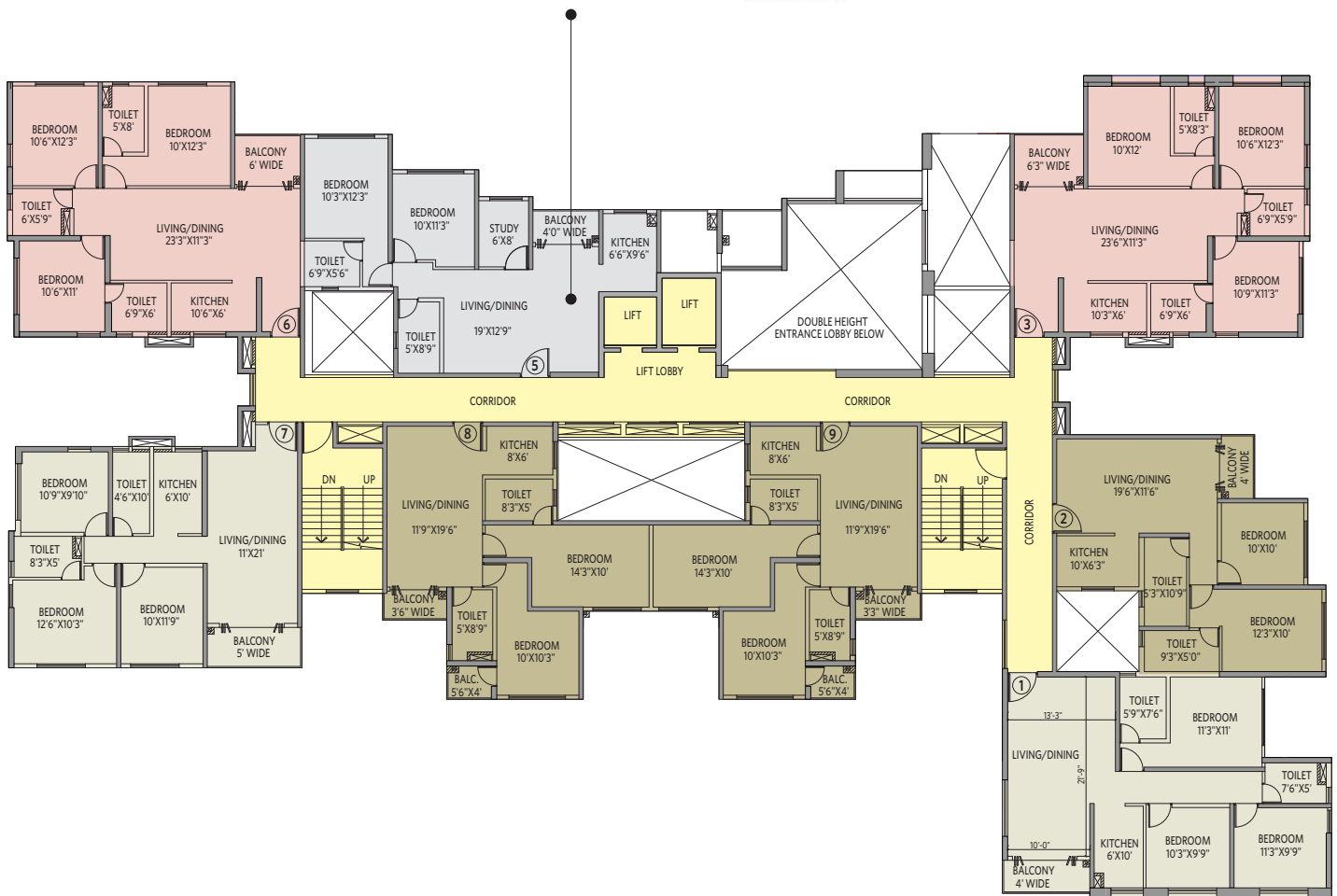
2nd-13th Typical floor plan All areas in sq ft

Flat #	Flat Type	BUA	CA	BA
1	3BHK+2T	994	875	42
2	2BHK+2T	778	687	30
3	3BHK+3T	1065	941	51
4	2BHK+2T+S	847	741	29
5	2BHK+2T+S	869	760	31
6	3BHK+3T	1058	938	47
7	3BHK+2T	974	848	56
8	2BHK+2T	804	683	47
9	2BHK+2T	809	683	48

BHK = Bedroom, Hall, Kitchen T = Toilet S = Study
 BUA = Built-up Area, CA = Carpet Area, BA = Balcony Area



2 BHK with 2 Toilets & Study • Flat #5



Europa - Block 7G
First floor plan

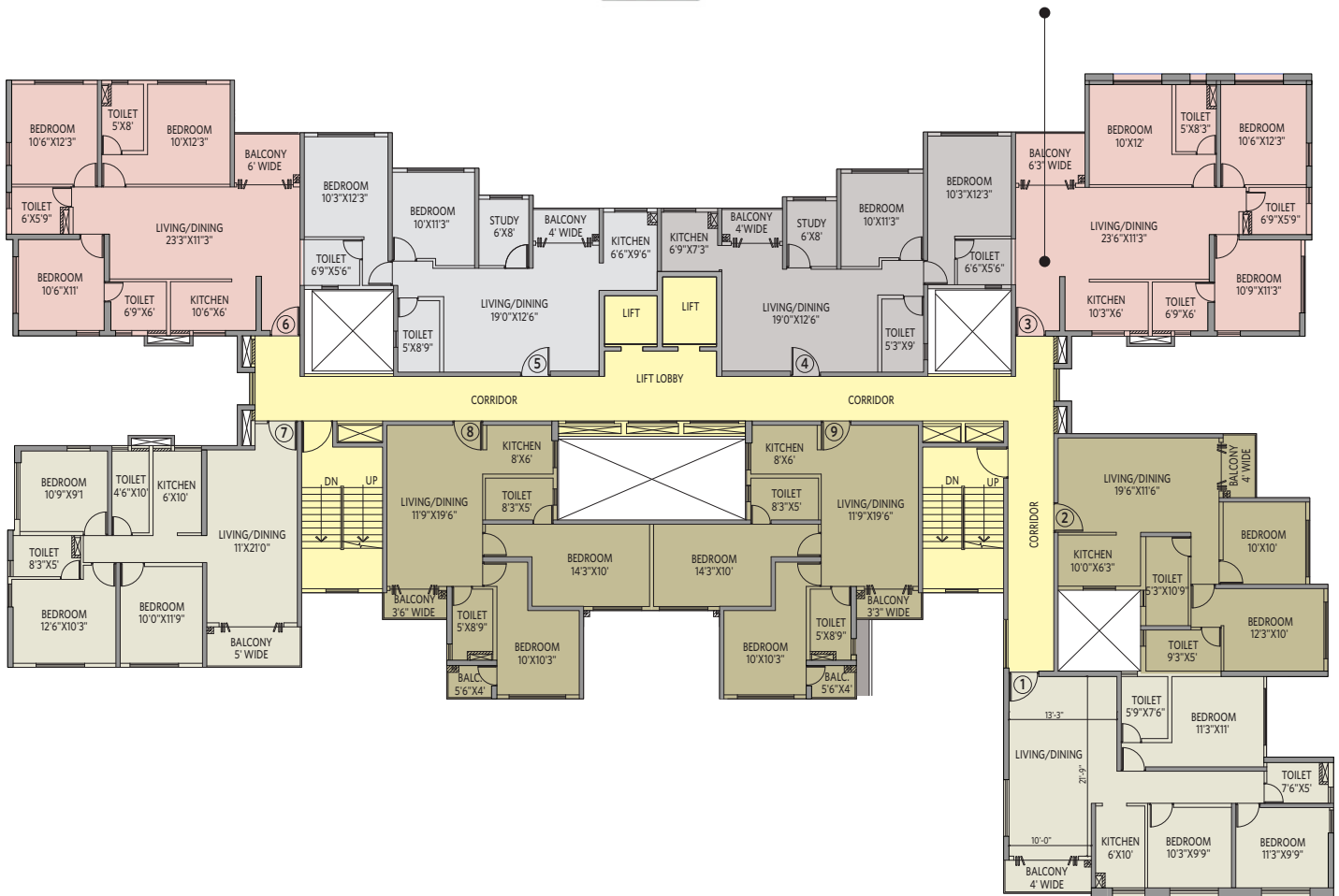
All areas in sq ft

Flat #	Flat Type	BUA	CA	BA
1	3BHK+2T	994	872	42
2	2BHK+2T	778	687	30
3	3BHK+3T	1070	941	51
4	-	-	-	-
5	2BHK+2T+S	871	760	31
6	3BHK+3T	1058	938	47
7	3BHK+2T	974	848	56
8	2BHK+2T	804	684	47
9	2BHK+2T	809	687	48

BHK = Bedroom, Hall, Kitchen T = Toilet S = Study
BUA = Built-up Area, CA = Carpet Area, BA = Balcony Area



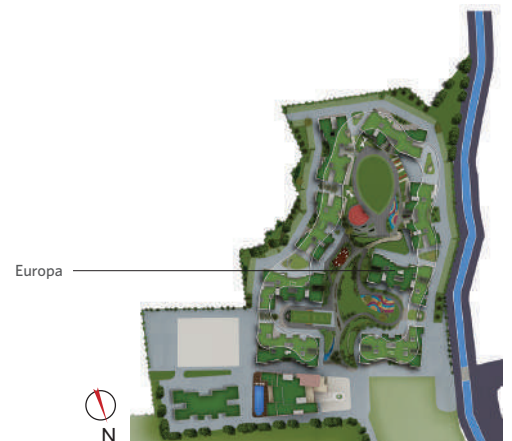
3 BHK with 3 Toilets • Flat #3



Europa - Block 7G
2nd-13th Typical floor plan All areas in sq ft

Flat #	Flat Type	BUA	CA	BA
1	3BHK+2T	994	872	42
2	2BHK+2T	778	687	30
3	3BHK+3T	1065	941	51
4	2BHK+2T+S	847	741	29
5	2BHK+2T+S	869	760	31
6	3BHK+3T	1058	938	47
7	3BHK+2T	974	848	56
8	2BHK+2T	804	684	47
9	2BHK+2T	809	687	48

BHK = Bedroom, Hall, Kitchen T = Toilet S = Study
BUA = Built-up Area, CA = Carpet Area, BA = Balcony Area



2 BHK with 2 Toilets & Study • Flat #5



Mynsa - Block 7F
First floor plan

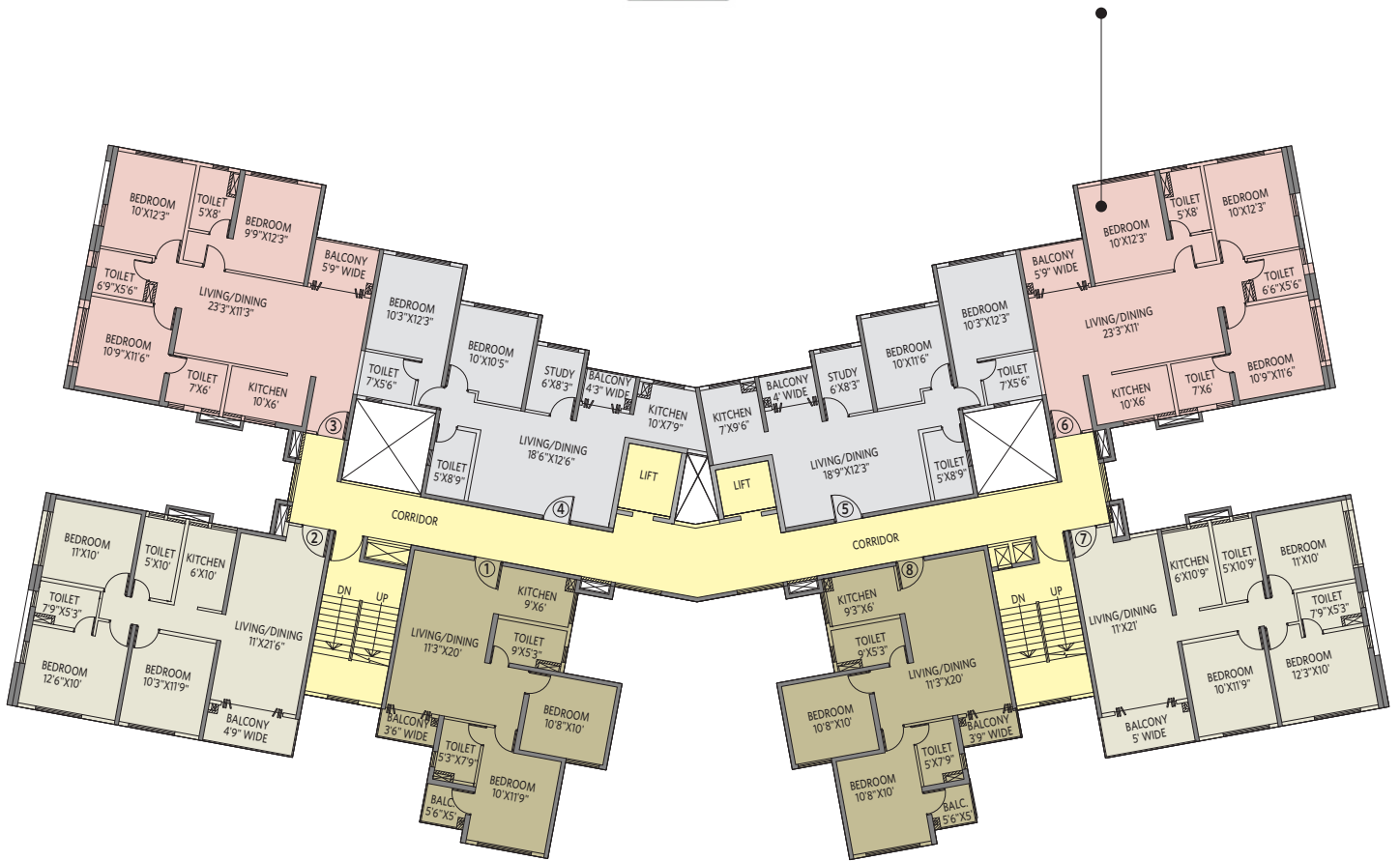
All areas in sq ft

Flat #	Flat Type	BUA	CA	BA	OT
1	2BHK+2T	799	673	52	582
2	3BHK+2T	987	860	54	365
3	3BHK+3T	1057	931	46	-
4	-	-	-	-	-
5	2BHK+2T+S	855	749	27	-
6	3BHK+3T	1048	927	45	-
7	3BHK+2T	980	851	58	-
8	2BHK+2T	799	672	53	440

BHK = Bedroom, Hall, Kitchen T = Toilet S = Study
BUA = Built-up Area, CA = Carpet Area, BA = Balcony Area



3 BHK with 3 Toilets • Flat #6



Mynsa ~ Block 7F

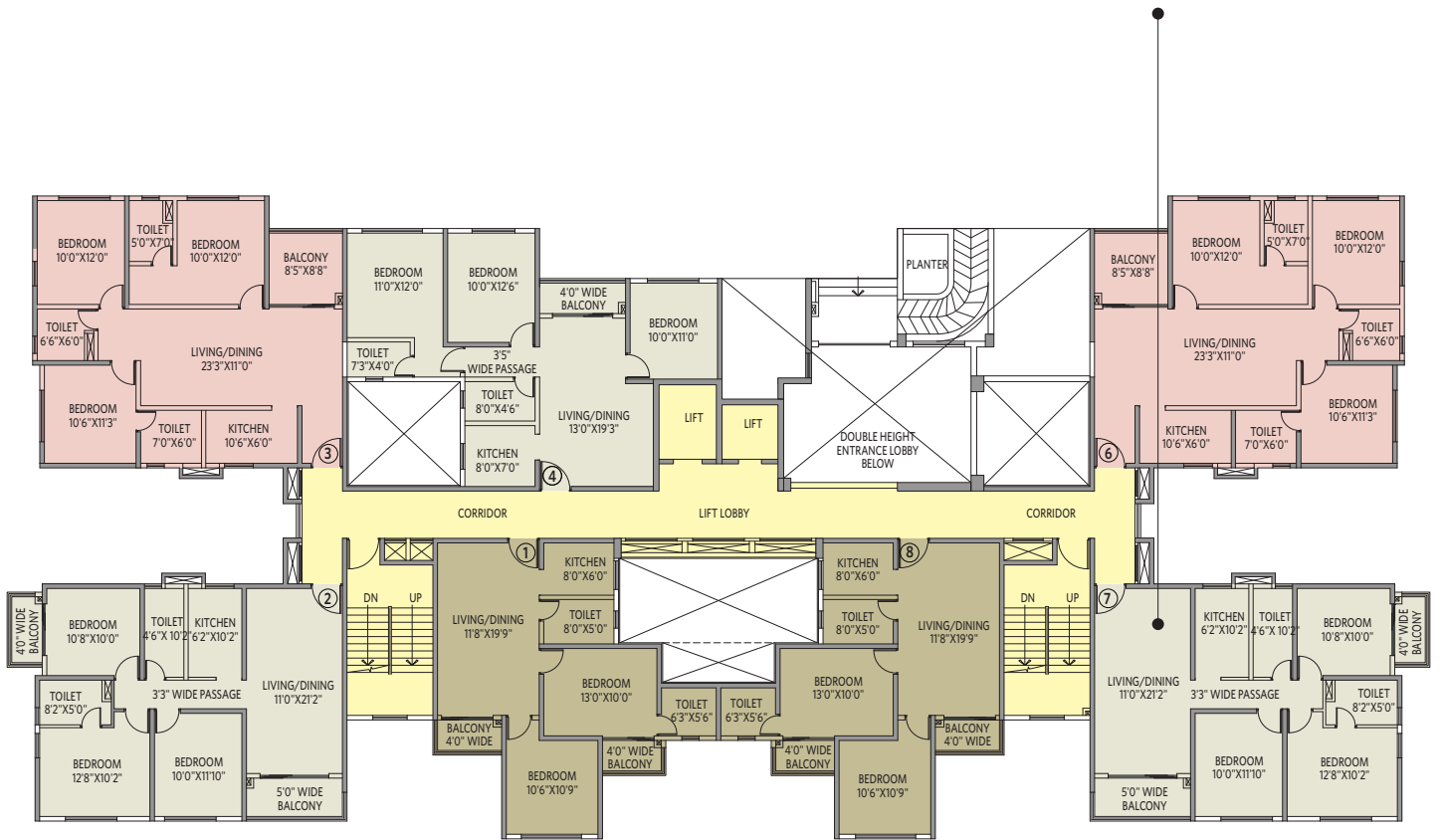
2nd-13th Typical floor plan All areas in sq ft

Flat #	Flat Type	BUA	CA	BA
1	2BHK+2T	799	673	52
2	3BHK+2T	987	860	54
3	3BHK+3T	1053	931	46
4	2BHK+2T+S	837	732	26
5	2BHK+2T+S	852	749	27
6	3BHK+3T	1048	927	45
7	3BHK+2T	980	851	58
8	2BHK+2T	799	672	53

BHK = Bedroom, Hall, Kitchen T = Toilet S = Study
 BUA = Built-up Area, CA = Carpet Area, BA = Balcony Area



3 BHK with 2 Toilets • Flat #7



Capella ~ Block 11

First floor plan

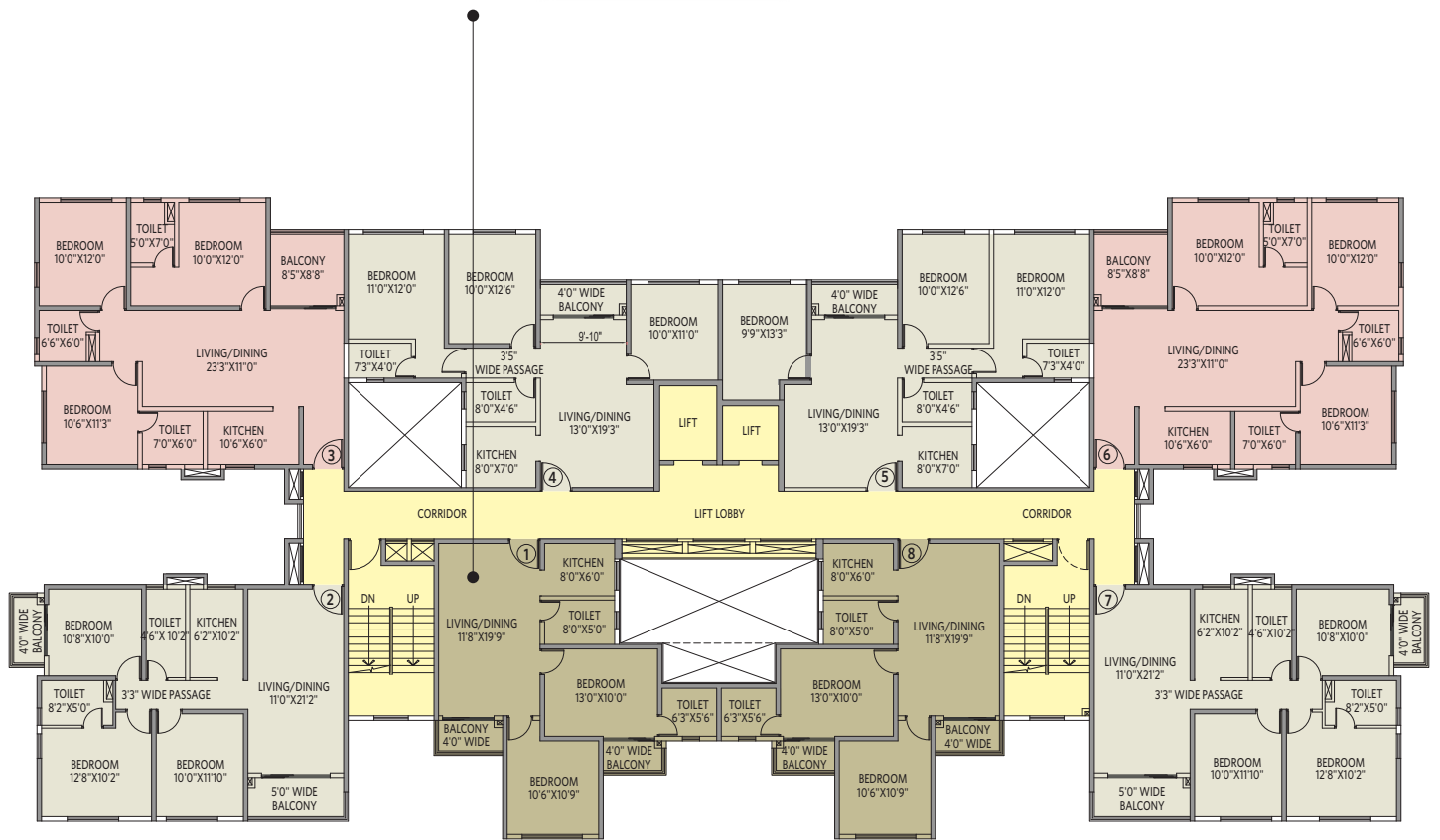
All areas in sq ft

Flat #	Flat Type	BUA	CA	BA
1	2BHK+2T	766	636	59
2	3BHK+2T	994	836	89
3	3BHK+3T	1075	924	71
4	3BHK+2T	925	809	39
5	-	-	-	-
6	3BHK+3T	1084	924	71
7	3BHK+2T	994	836	89
8	2BHK+2T	766	636	59

BHK = Bedroom, Hall, Kitchen T = Toilet S = Study
BUA = Built-up Area, CA = Carpet Area, BA = Balcony Area



2 BHK with 2 Toilets • Flat #1



Capella ~ Block 11
2nd-13th Typical floor plan All areas in sq ft

Flat #	Flat Type	BUA	CA	BA
1	2BHK+2T	766	636	59
2	3BHK+2T	994	836	89
3	3BHK+3T	1075	924	71
4	3BHK+2T	922	809	39
5	3BHK+2T	935	822	39
6	3BHK+3T	1075	924	71
7	3BHK+2T	994	836	89
8	2BHK+2T	766	636	59

BHK = Bedroom, Hall, Kitchen T = Toilet S = Study
BUA = Built-up Area, CA = Carpet Area, BA = Balcony Area



SIDDHA

Corporate Office

Siddha Park 99A Park Street
Kolkata 700016 India
P +91 8048 767 767
E info@siddhagroup.com
W siddhagroup.com

Site

Action Area IIC, New Town
Street No 707, Kolkata 700161 India
E galaxia@siddhagroup.com
W siddhagalaxia.com

SKYWALKS
AT SIDDHA

Download the
Siddha Group App



Follow us on



Project Financial Assistance



Phase III HIRA/P/NOR/2020/000940

Phase II HIRA/P/NOR/2018/000184 | hira.wb.gov.in

All features, specifications, amenities, layout images and other aspects of the apartments/building(s)/complex mentioned in this brochure are only representational and informative. The same may be subject to change/revision/alteration in terms of approvals, orders, directions and/or regulations of the concerned/relevant authorities, and/or compliance with laws/regulations in force from time to time. All dimensions have been rounded off. This brochure is not a legal offer or document.