



RADHE
GREENS



53.49

ADJ. F.P.NO. 90/1/2

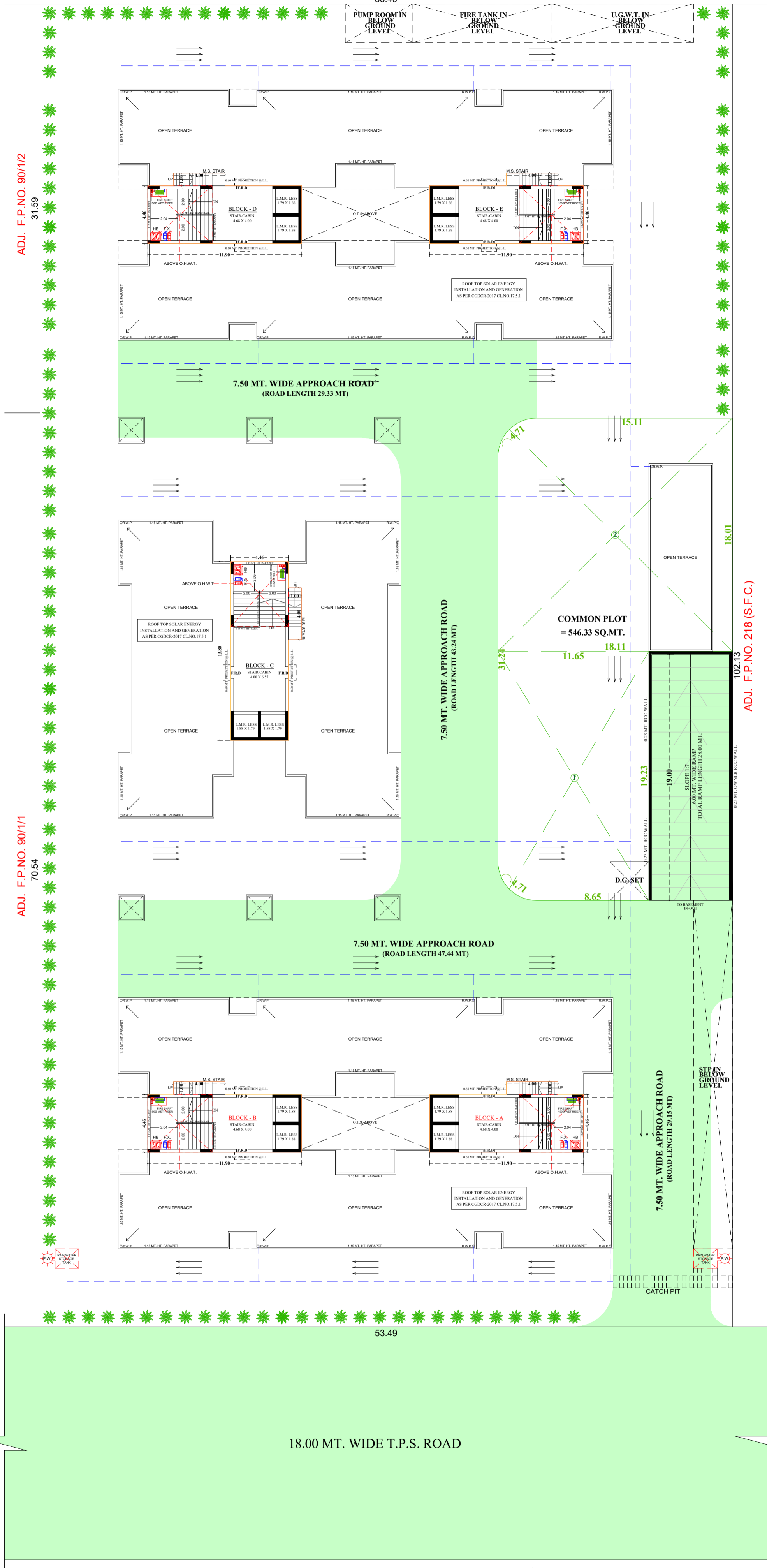
31.59

ADJ. F.P.NO. 90/1/1

70.54

ADJ. F.P.NO. 218 (S.F.C.)

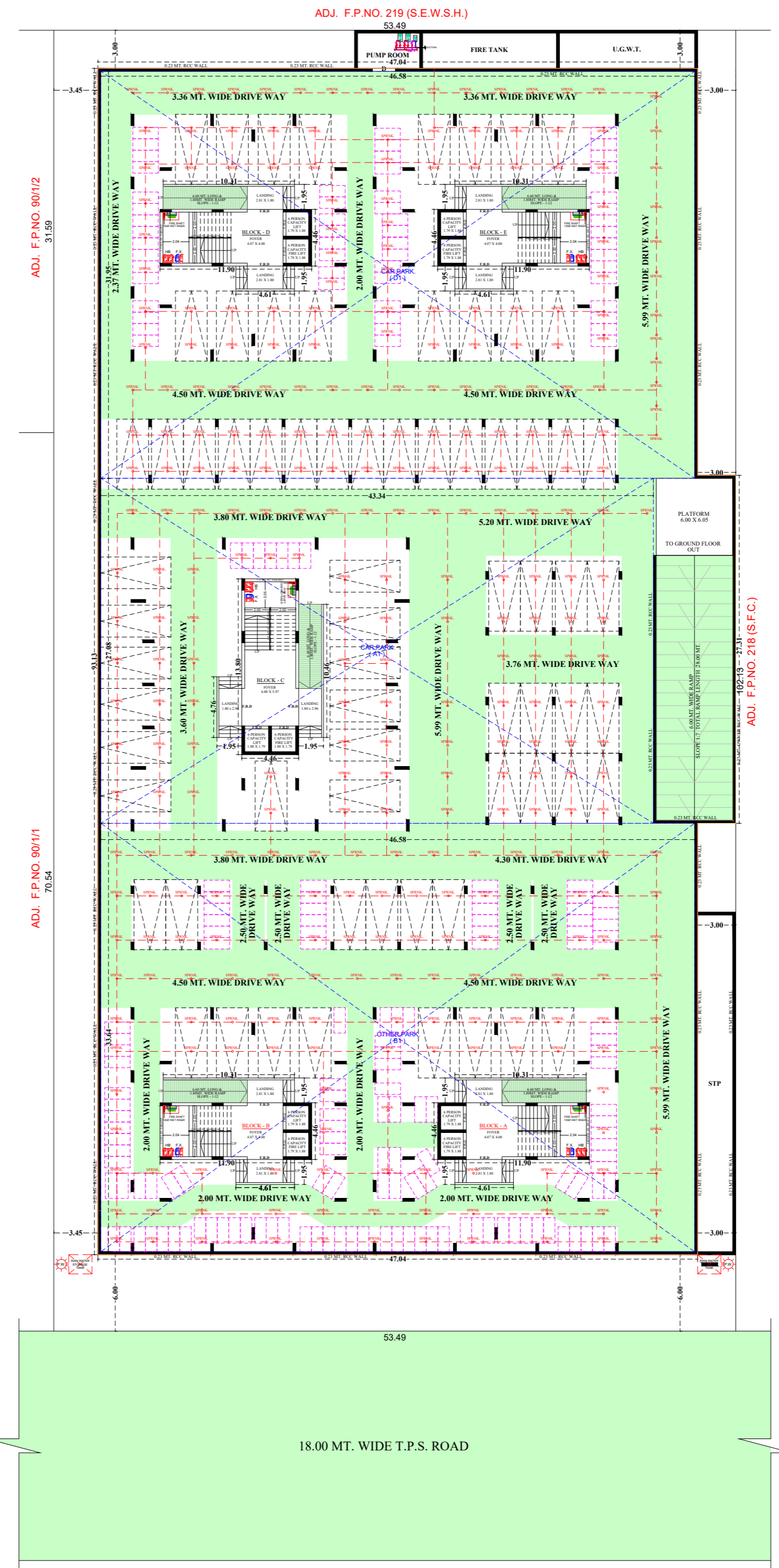
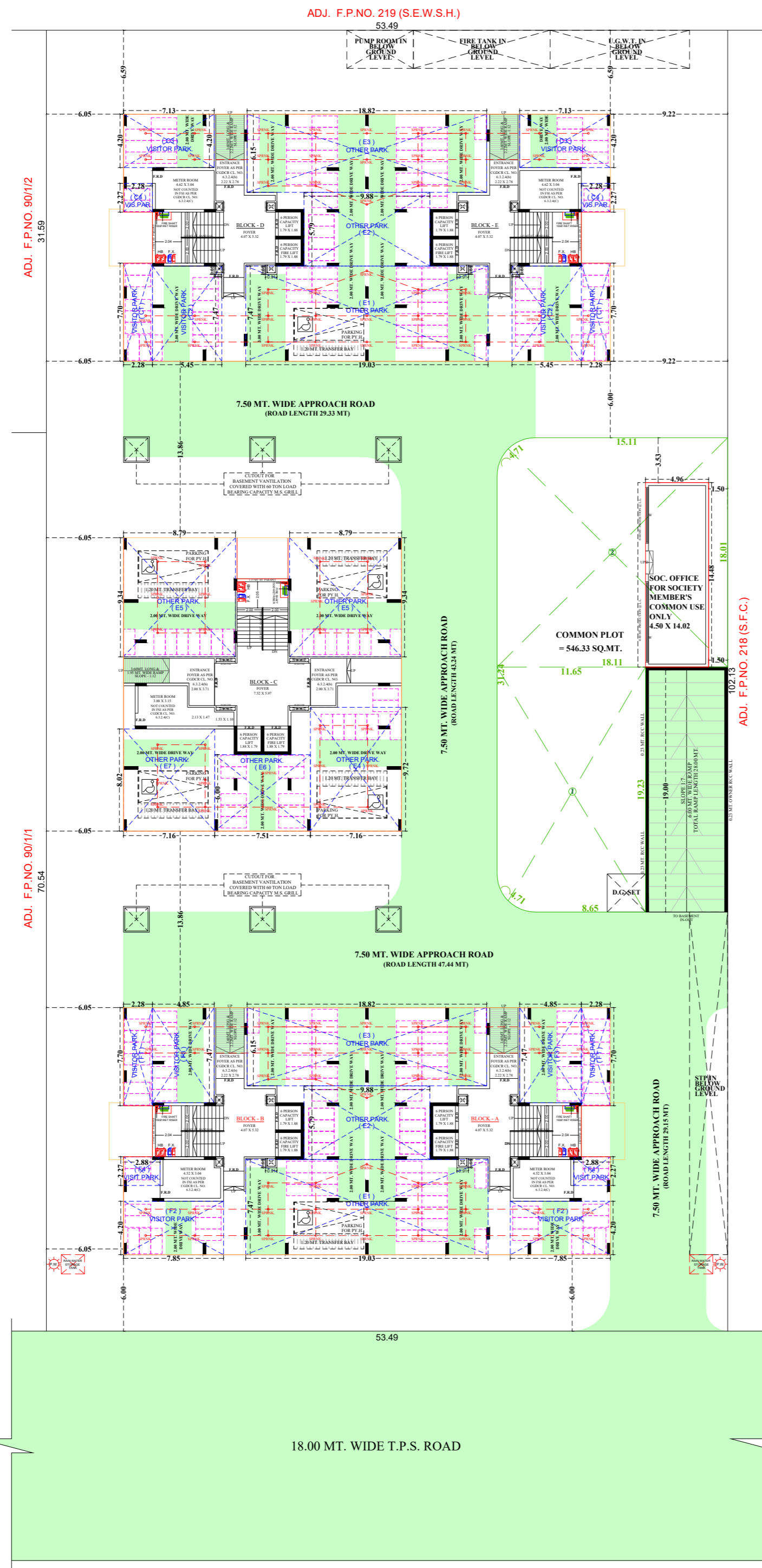
102.13

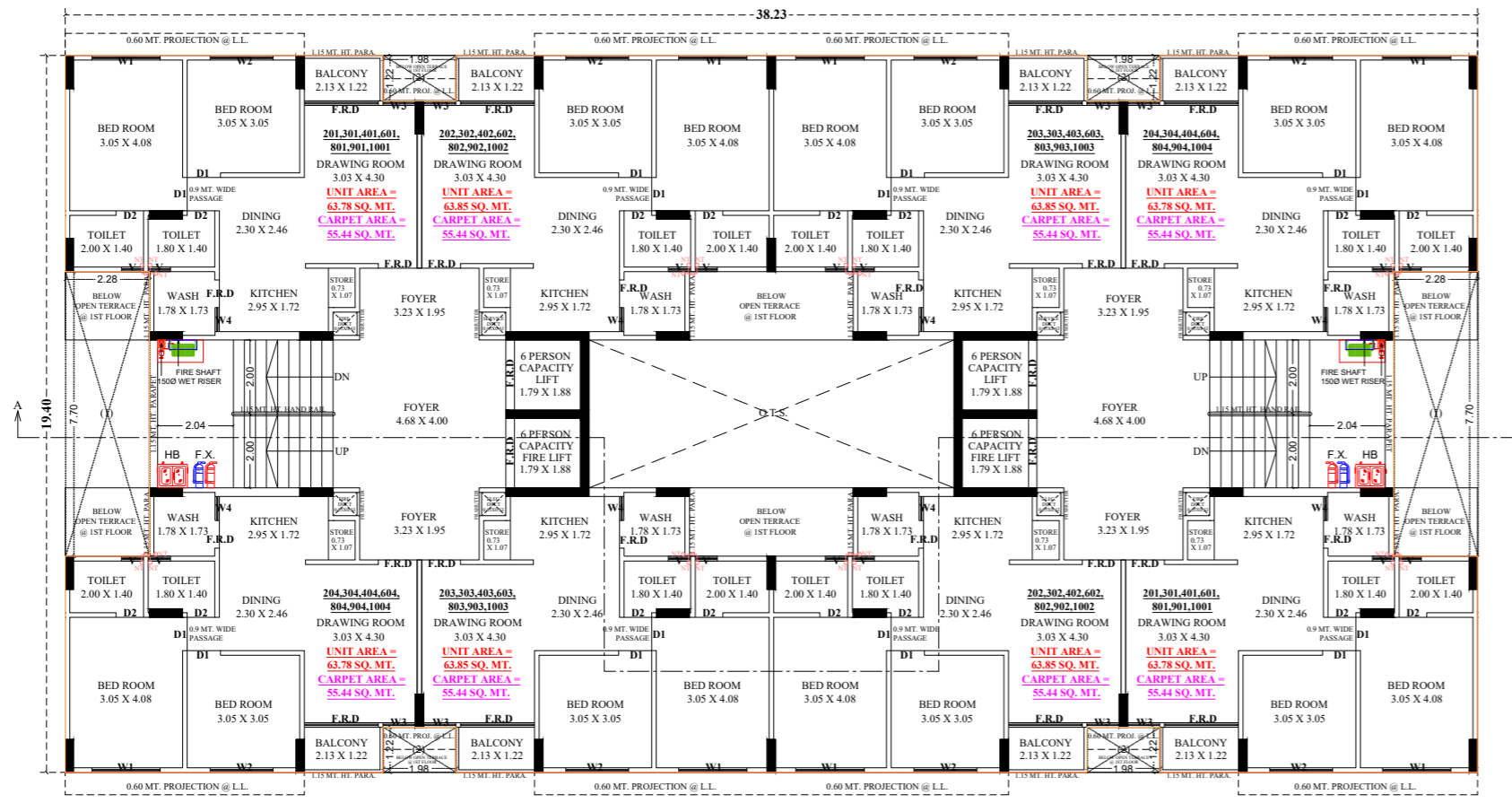


ENVIRONMENT MANAGEMENT PLAN

SCALE :- 1.00 CM. = 2.00 MT.

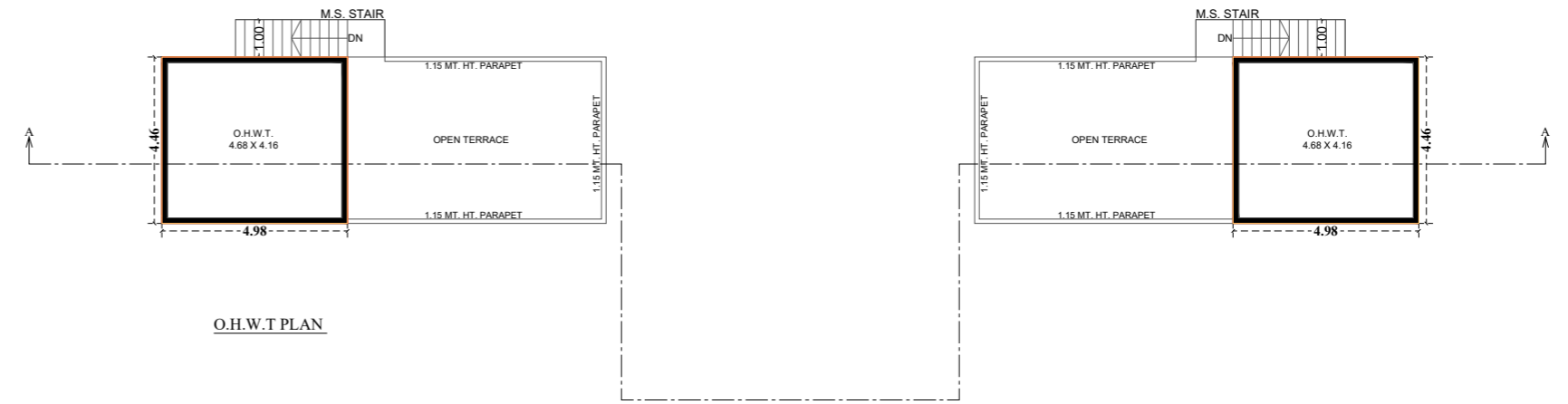




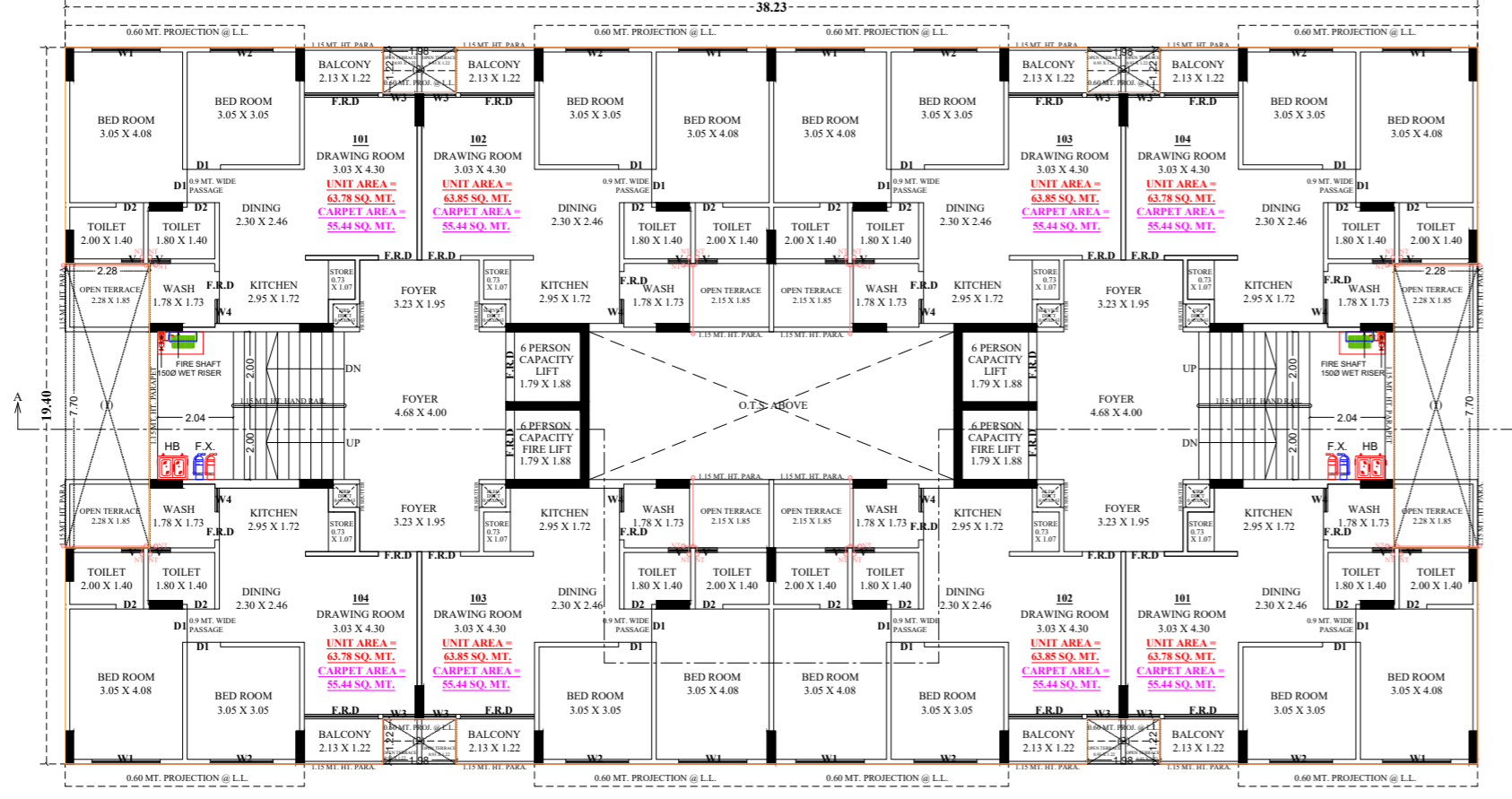


TYPICAL FLOOR PLAN
2ND TO 4TH, 6TH, 8TH TO 10TH FLOOR

NOTE :- ALL OUTER & INTERNAL WALL ARE OF 0.13 MT. TH. BK WALL.

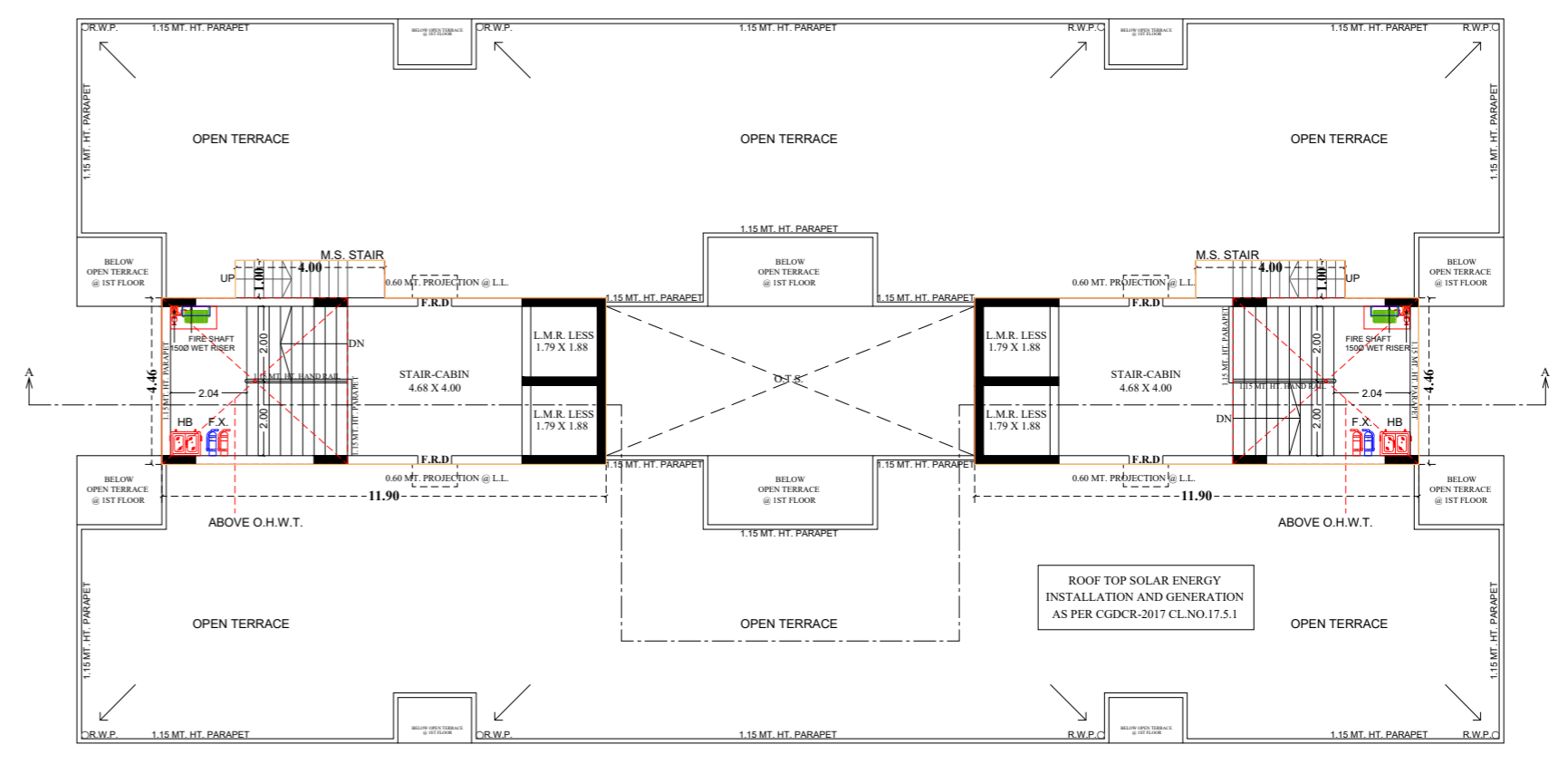


O.H.W.T. PLAN



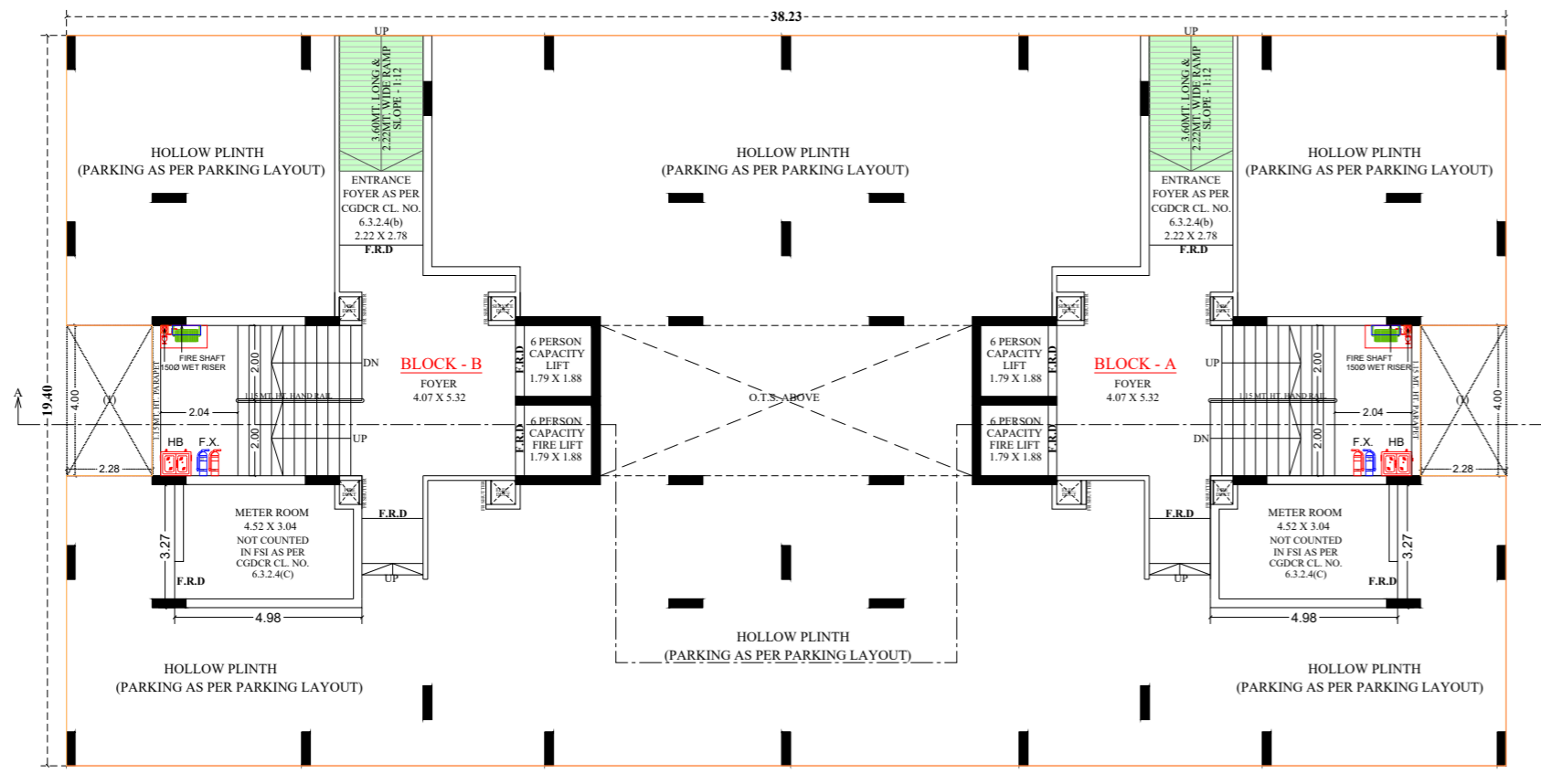
FIRST FLOOR PLAN

NOTE :- ALL OUTER & INTERNAL WALL ARE OF 0.13 MT. TH. BK WALL.



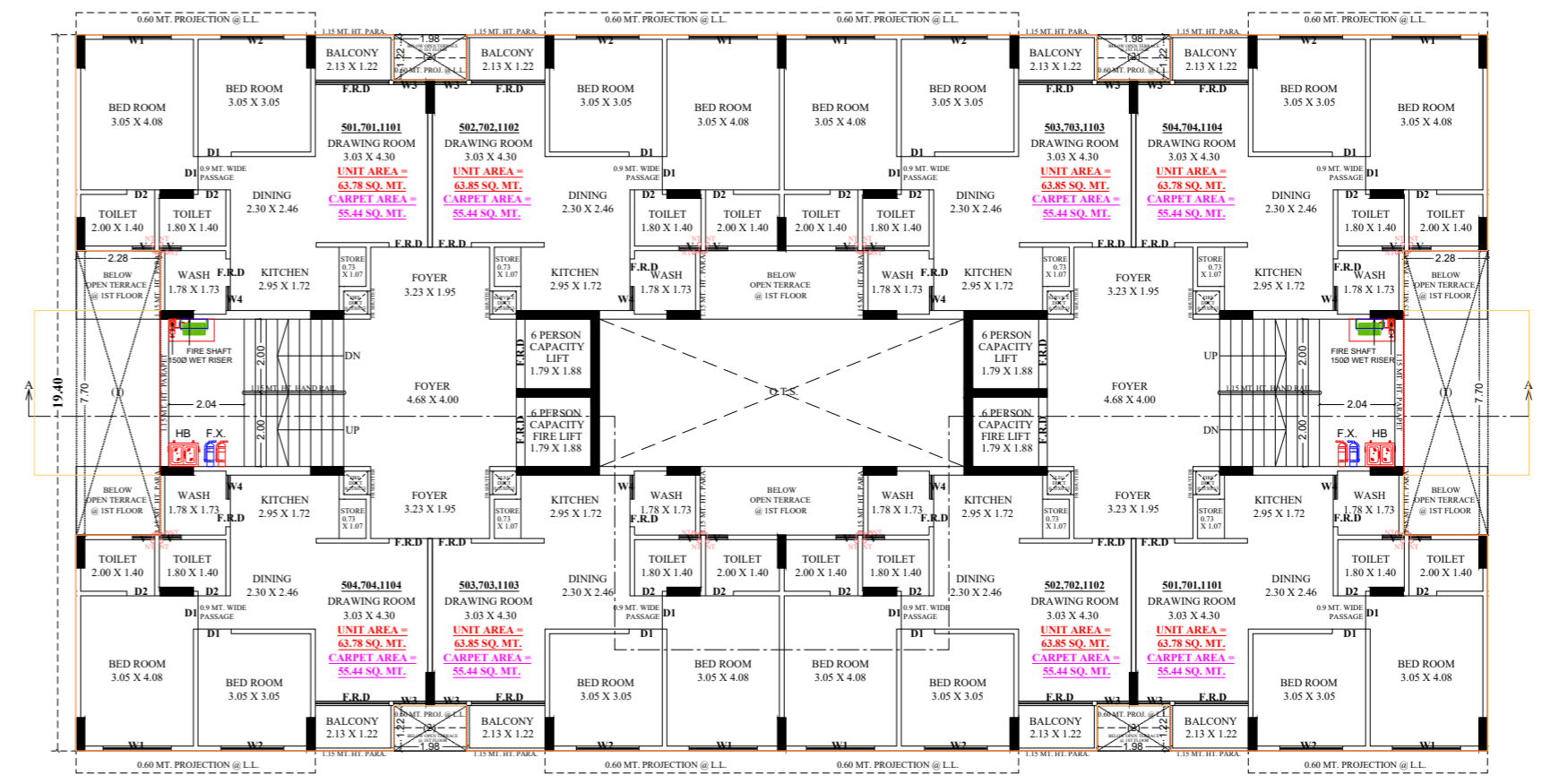
OPEN TERRACE PLAN (STAIR CABIN)

NOTE :- ALL OUTER & INTERNAL WALL ARE OF 0.13 MT. TH. BK WALL.



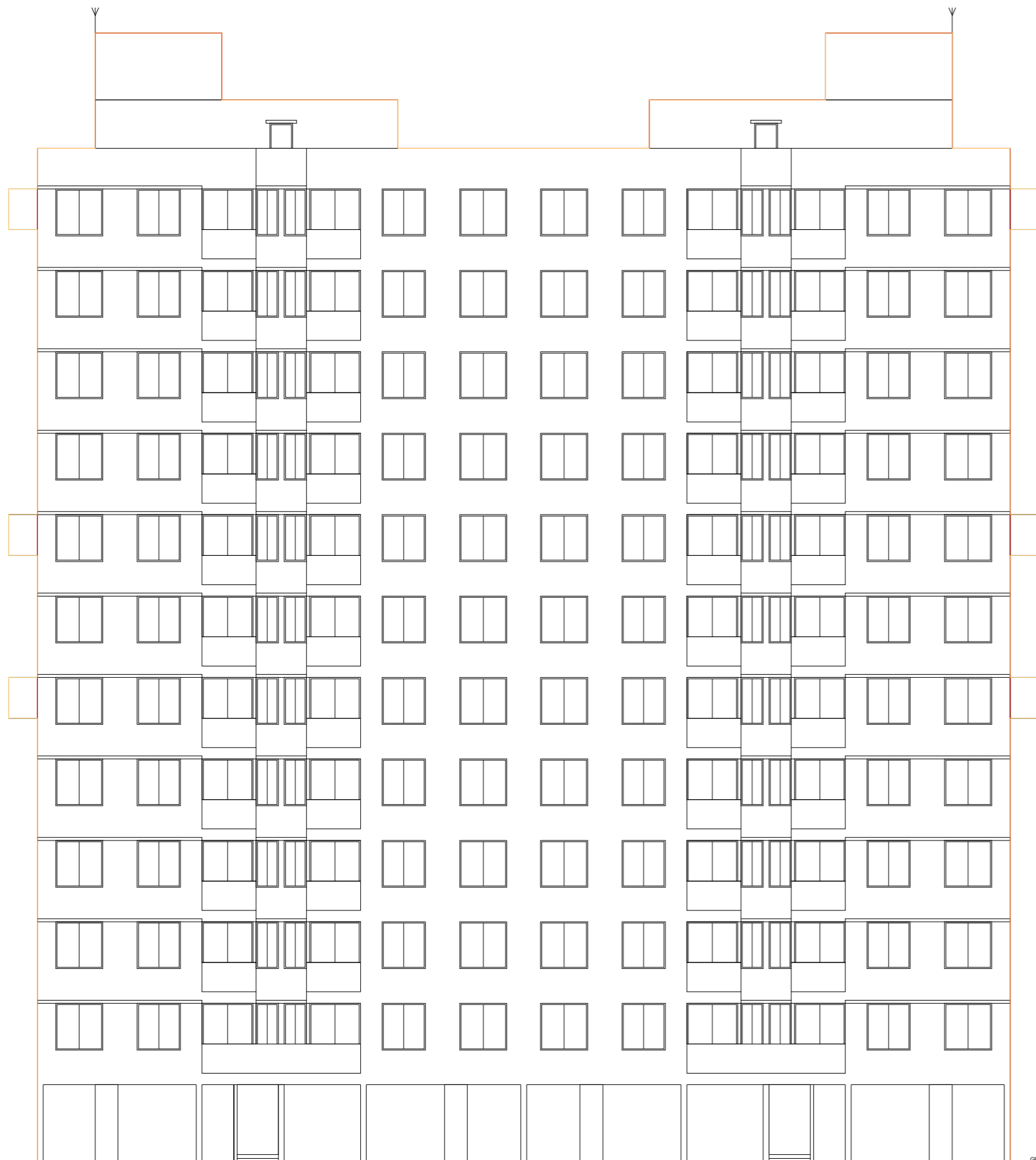
GROUND FLOOR PLAN (HOLLOW PLINTH)

NOTE :- ALL OUTER & INTERNAL WALL ARE OF 0.13 MT. TH. BK WALL.

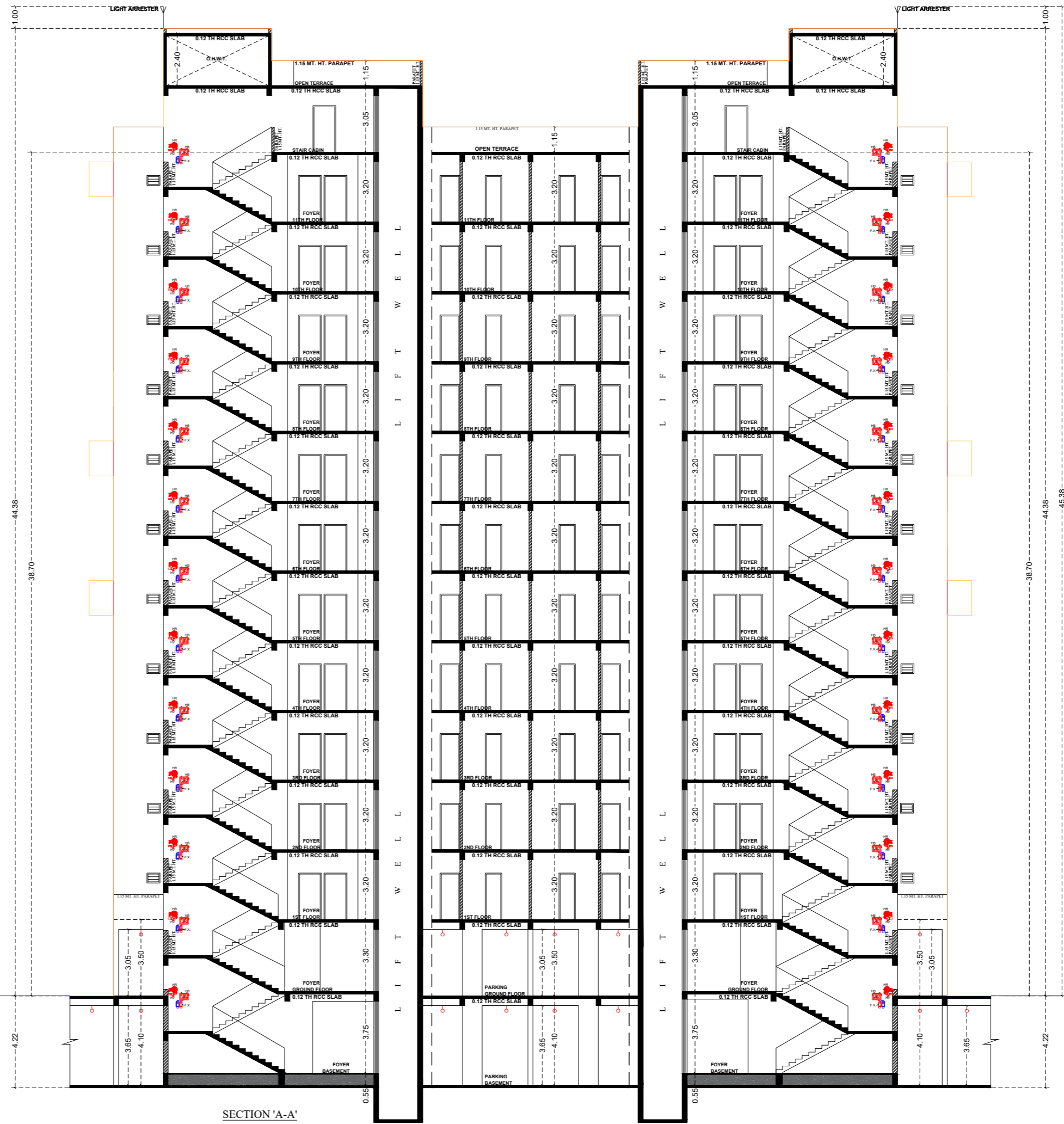


TYPICAL FLOOR PLAN
5TH, 7TH, 11TH FLOOR

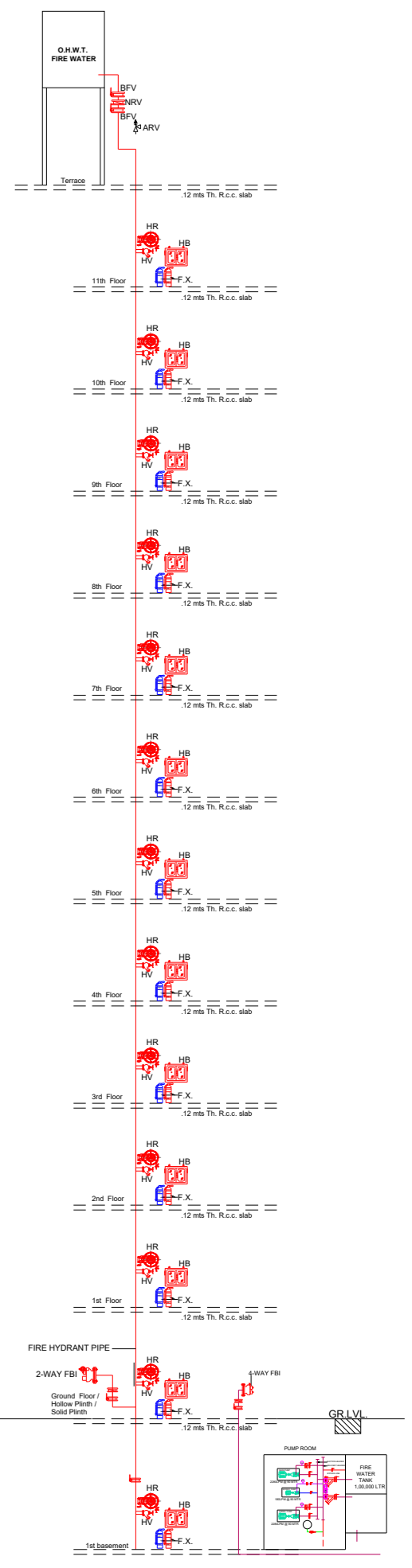
NOTE :- ALL OUTER & INTERNAL WALL ARE OF 0.13 MT. TH. BK WALL.

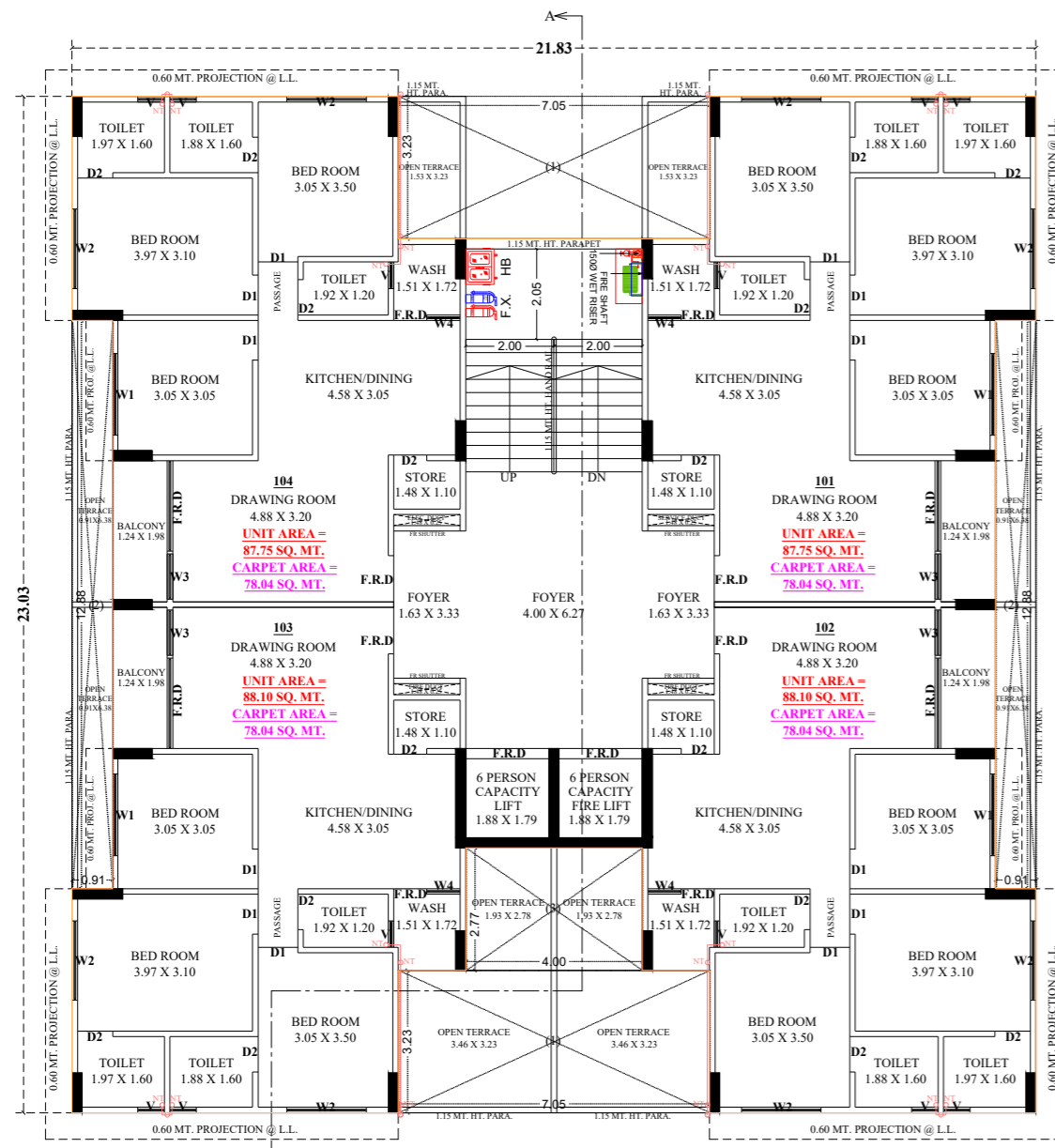


FRONT ELEVATION



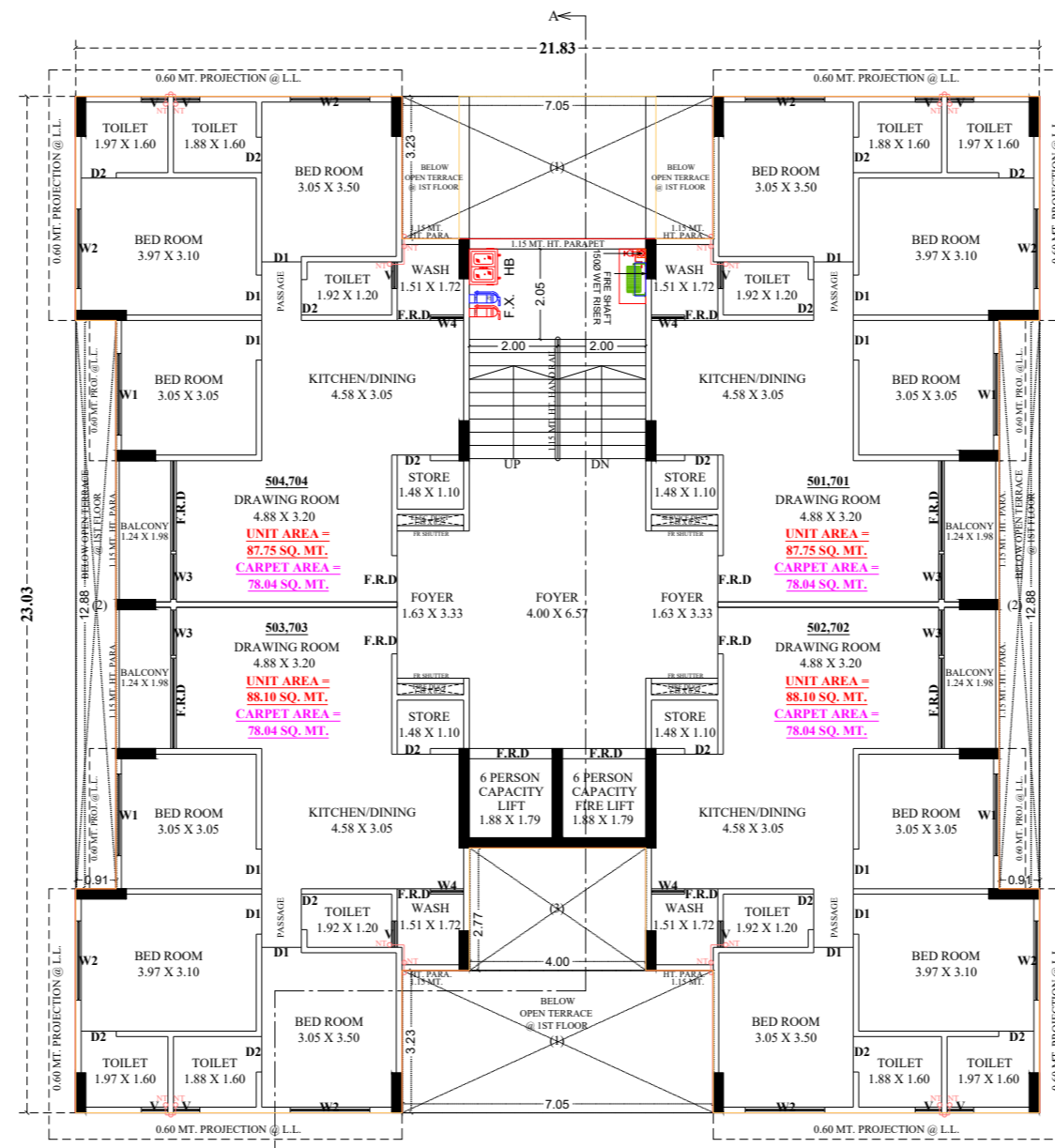
SECTION 'A-A'





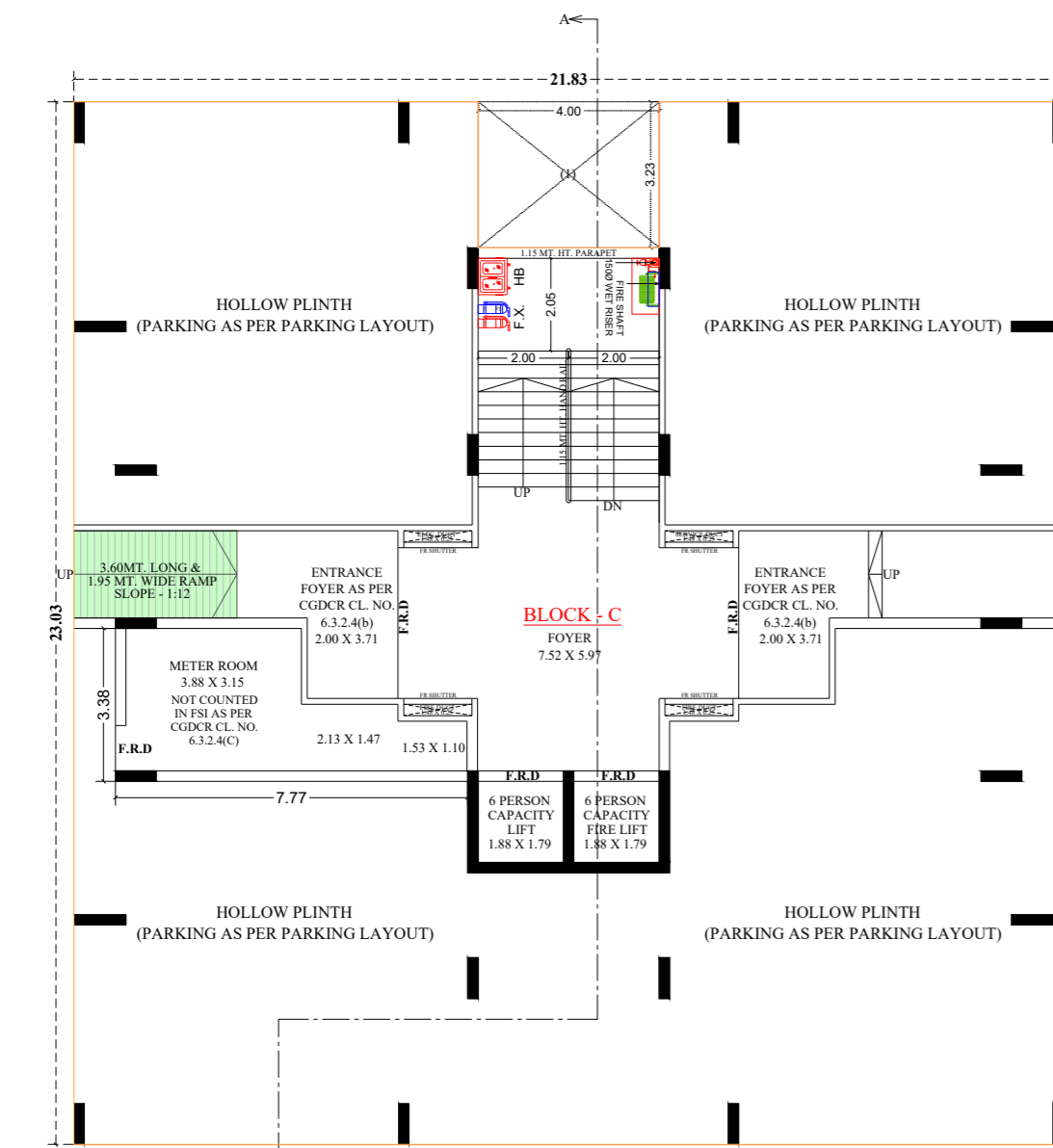
FIRST FLOOR PLAN

NOTE :- ALL OUTER & INTERNAL WALL ARE OF 0.13 MT. TH. BK WALL



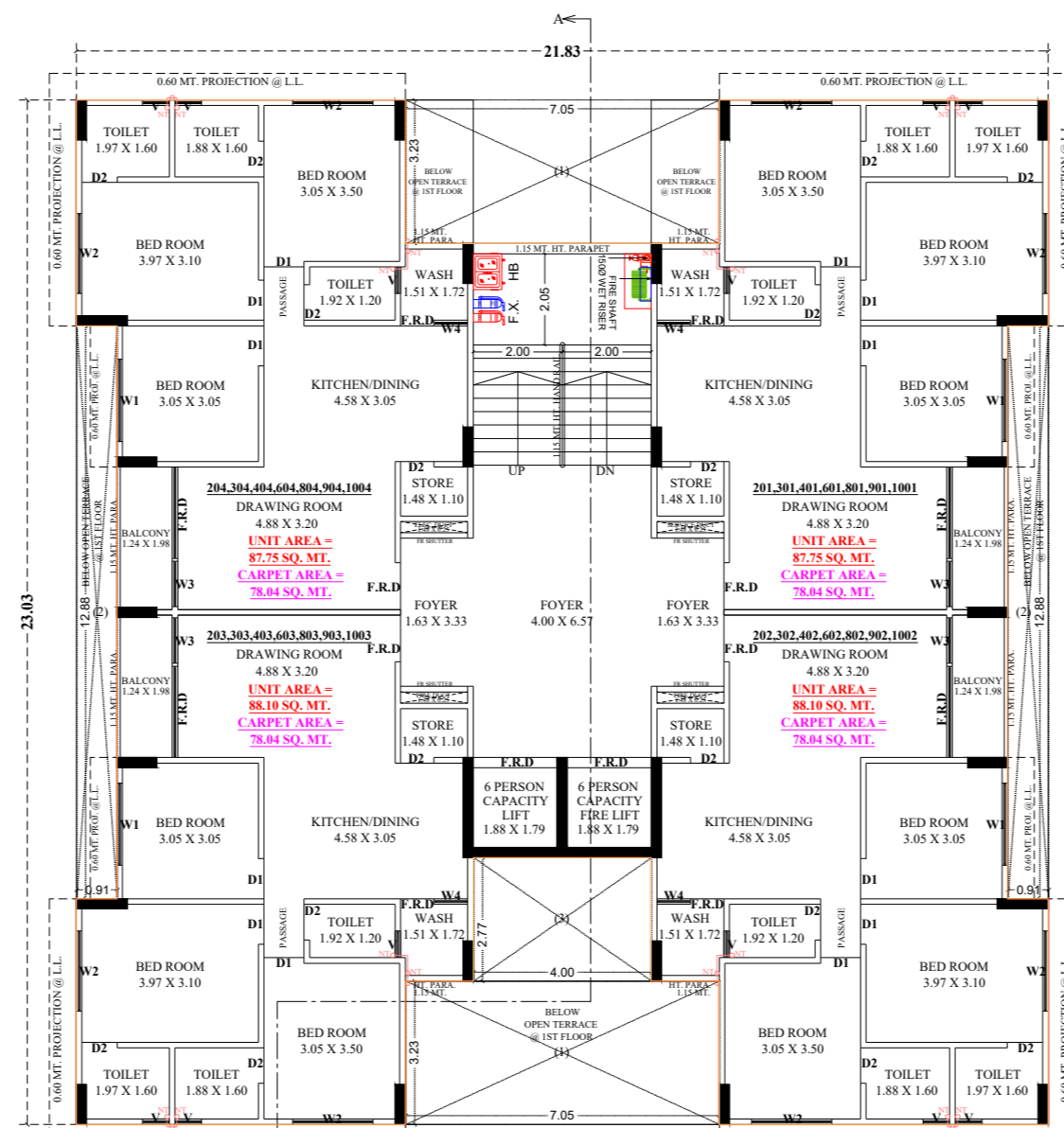
**TYPICAL FLOOR PLAN
5TH, 7TH FLOOR**

NOTE :- ALL OUTER & INTERNAL WALL ARE OF 0.13 MT. TH. BK WALL



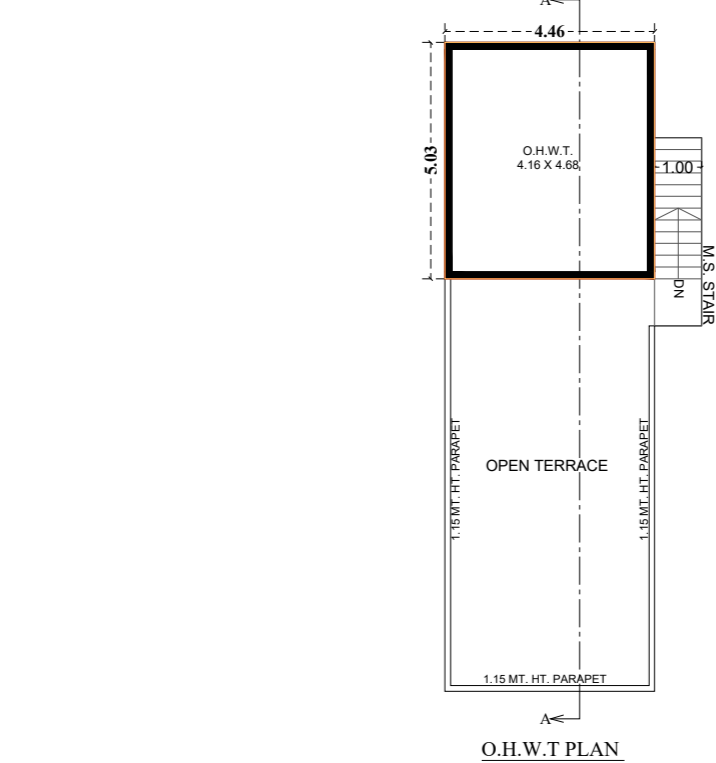
GROUND FLOOR PLAN (HOLLOW PLINTH)

NOTE :- ALL OUTER & INTERNAL WALL ARE OF 0.23 MT. TH. BK WALL

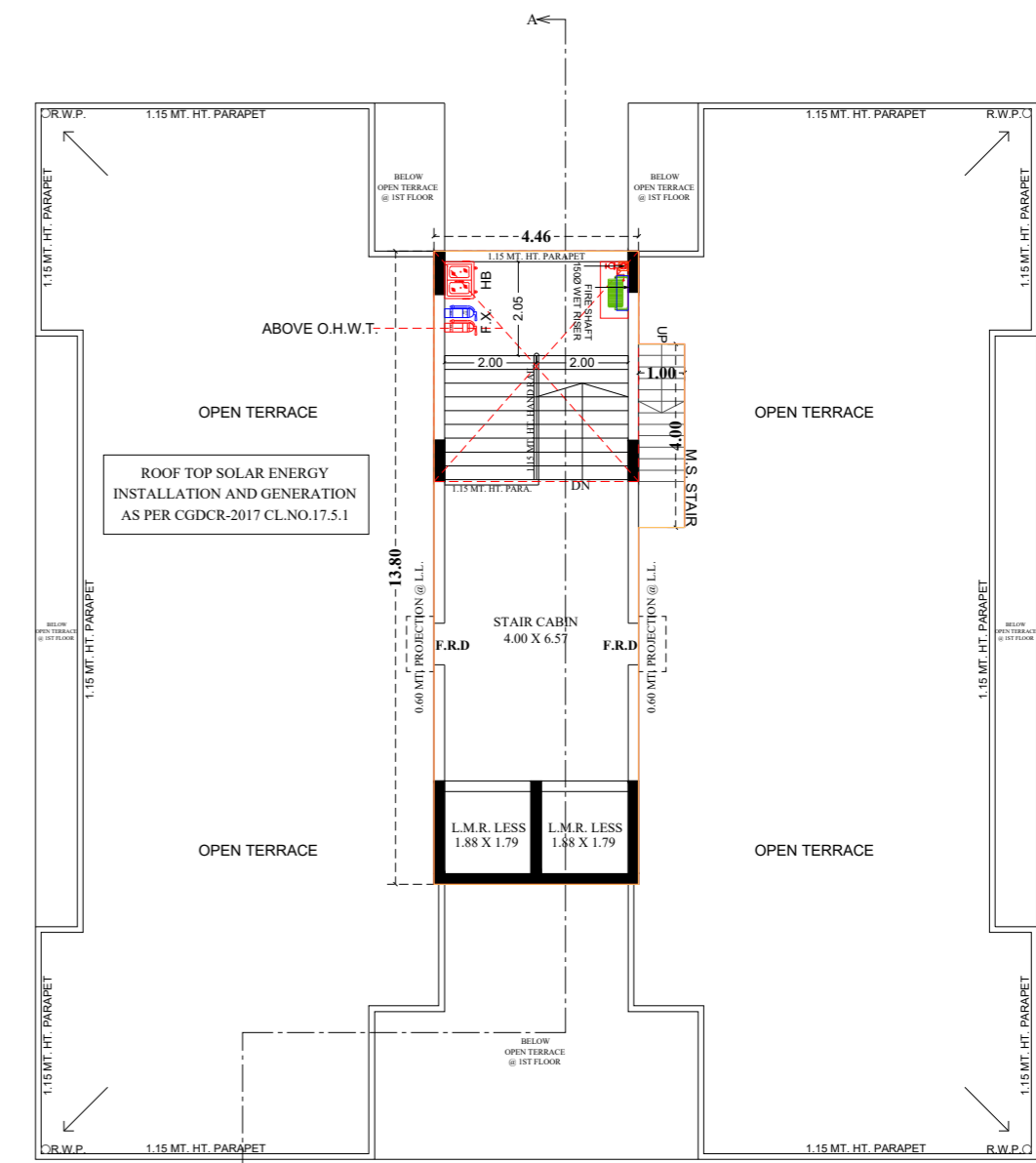


**TYPICAL FLOOR PLAN
2ND TO 4TH, 6TH, 8TH TO 10TH FLOOR**

NOTE :- ALL OUTER & INTERNAL WALL ARE OF 0.13 MT. TH. BK WALL

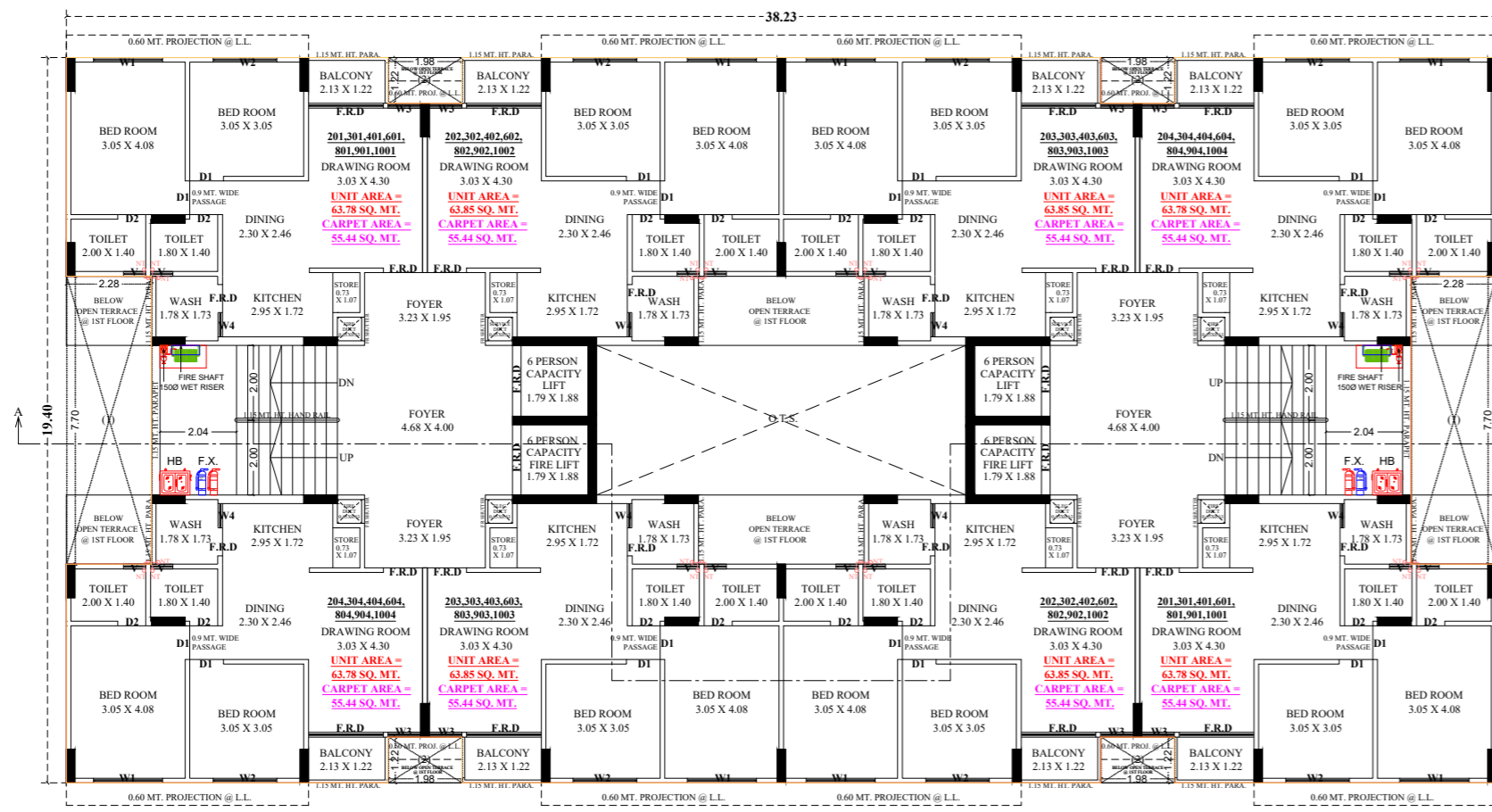


O.H.W.T PLAN

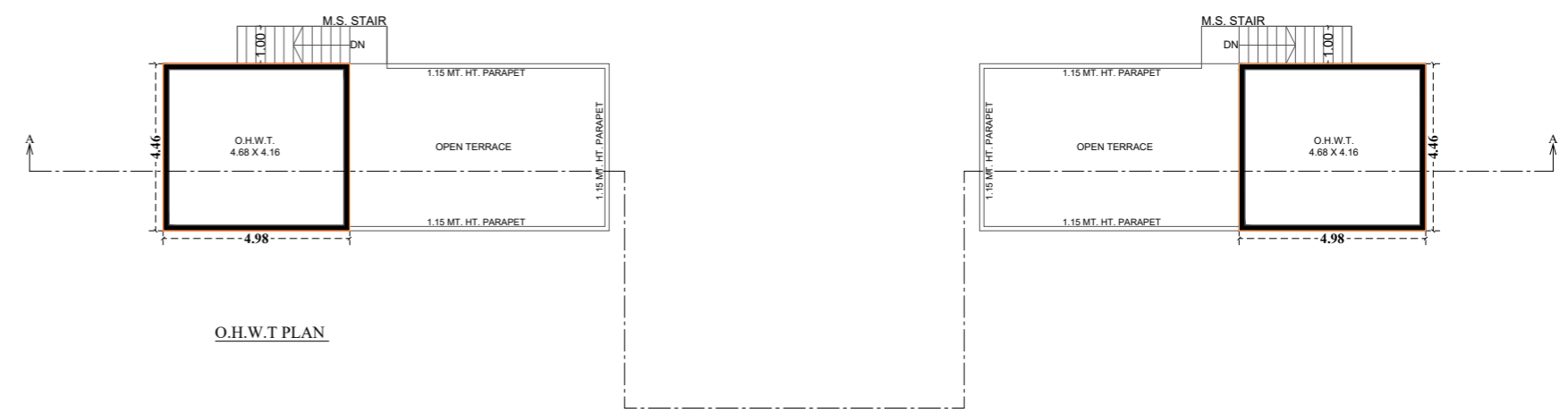


OPEN TERRACE PLAN (STAIR CABIN)

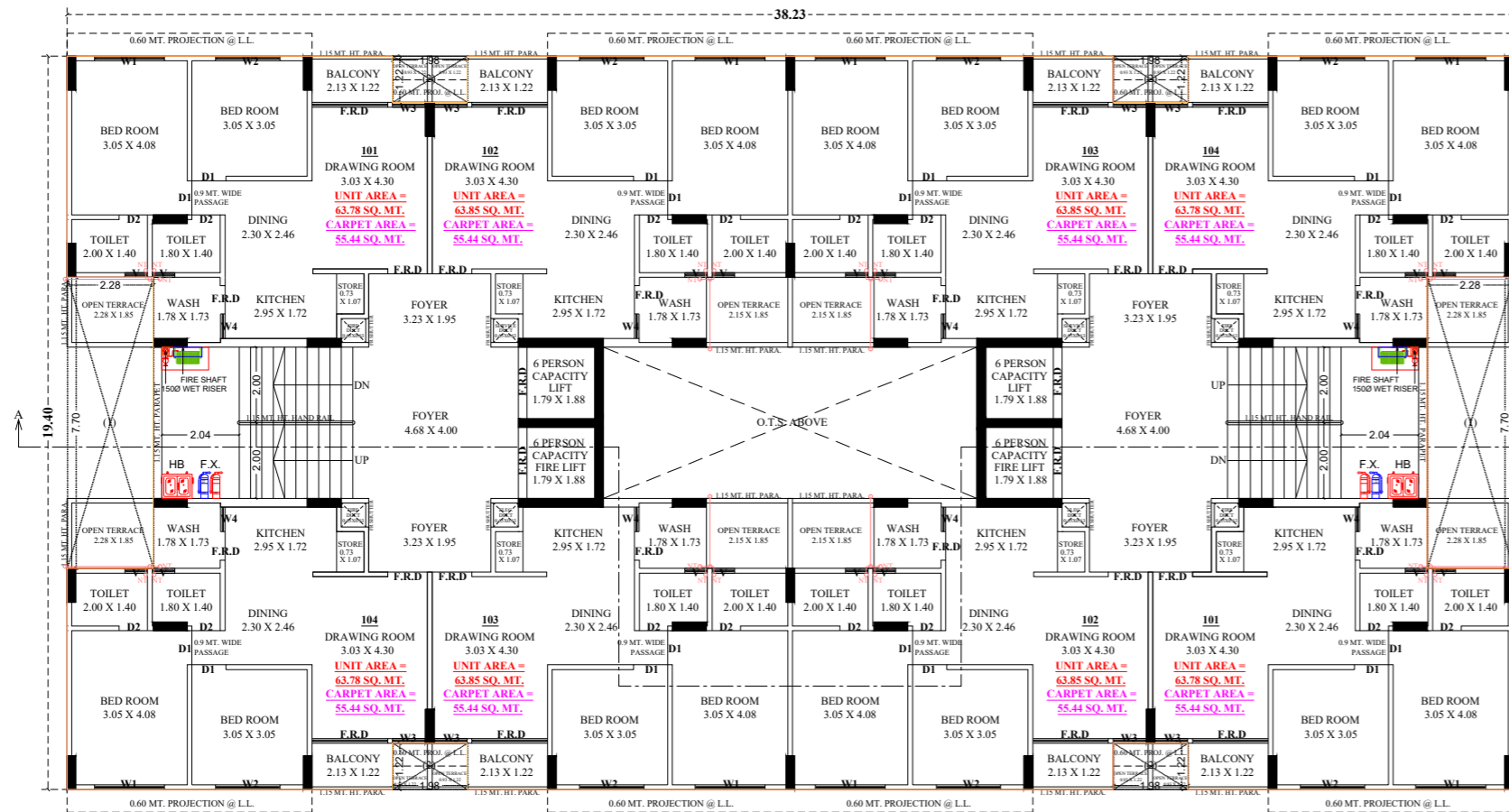
NOTE :- ALL OUTER & INTERNAL WALL ARE OF 0.23 MT. TH. BK WALL



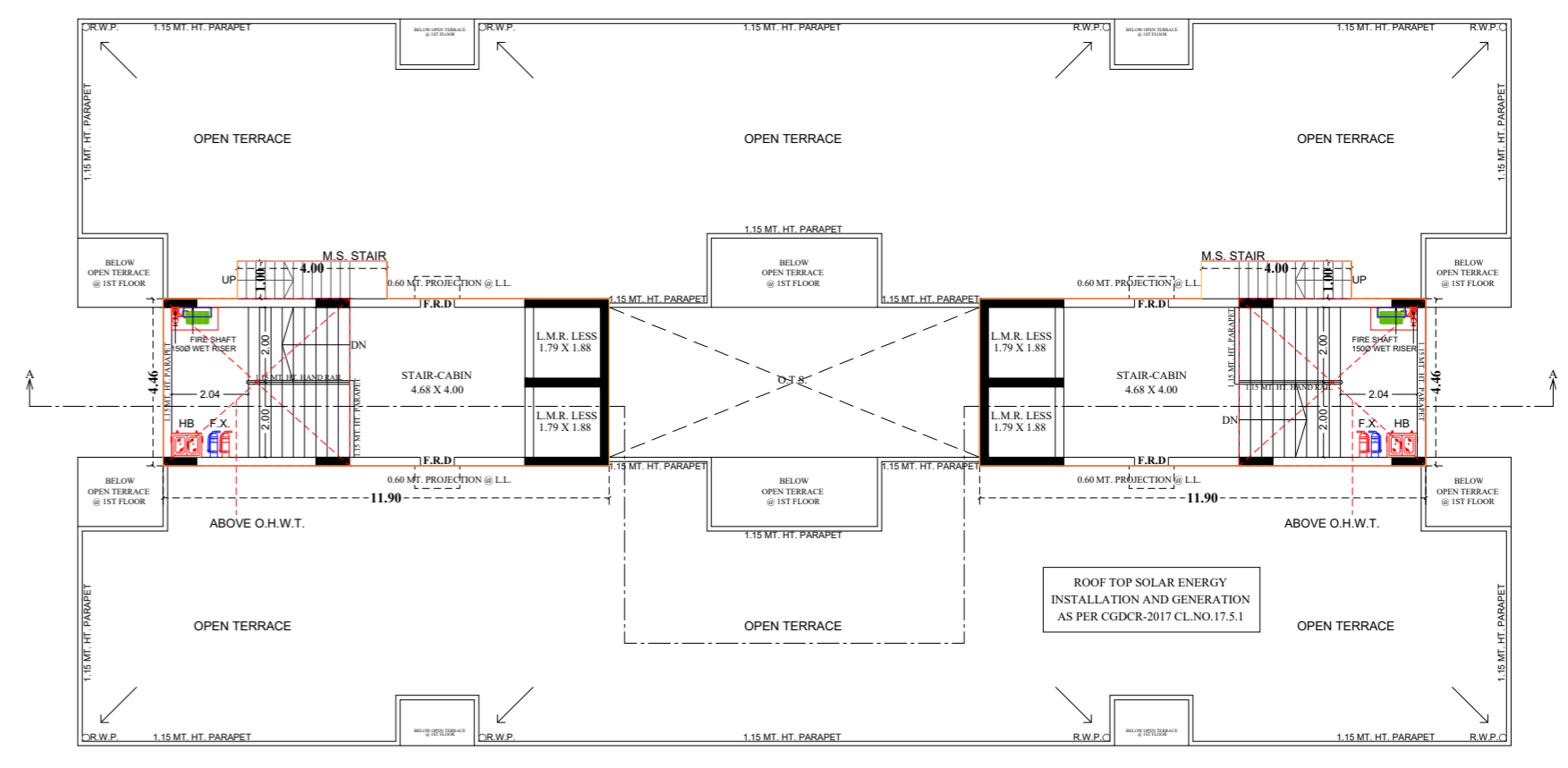
**TYPICAL FLOOR PLAN
2ND TO 4TH, 6TH, 8TH TO 10TH FLOOR**
NOTE :- ALL OUTER & INTERNAL WALL ARE OF 0.13 MT. TH. BK WALL.



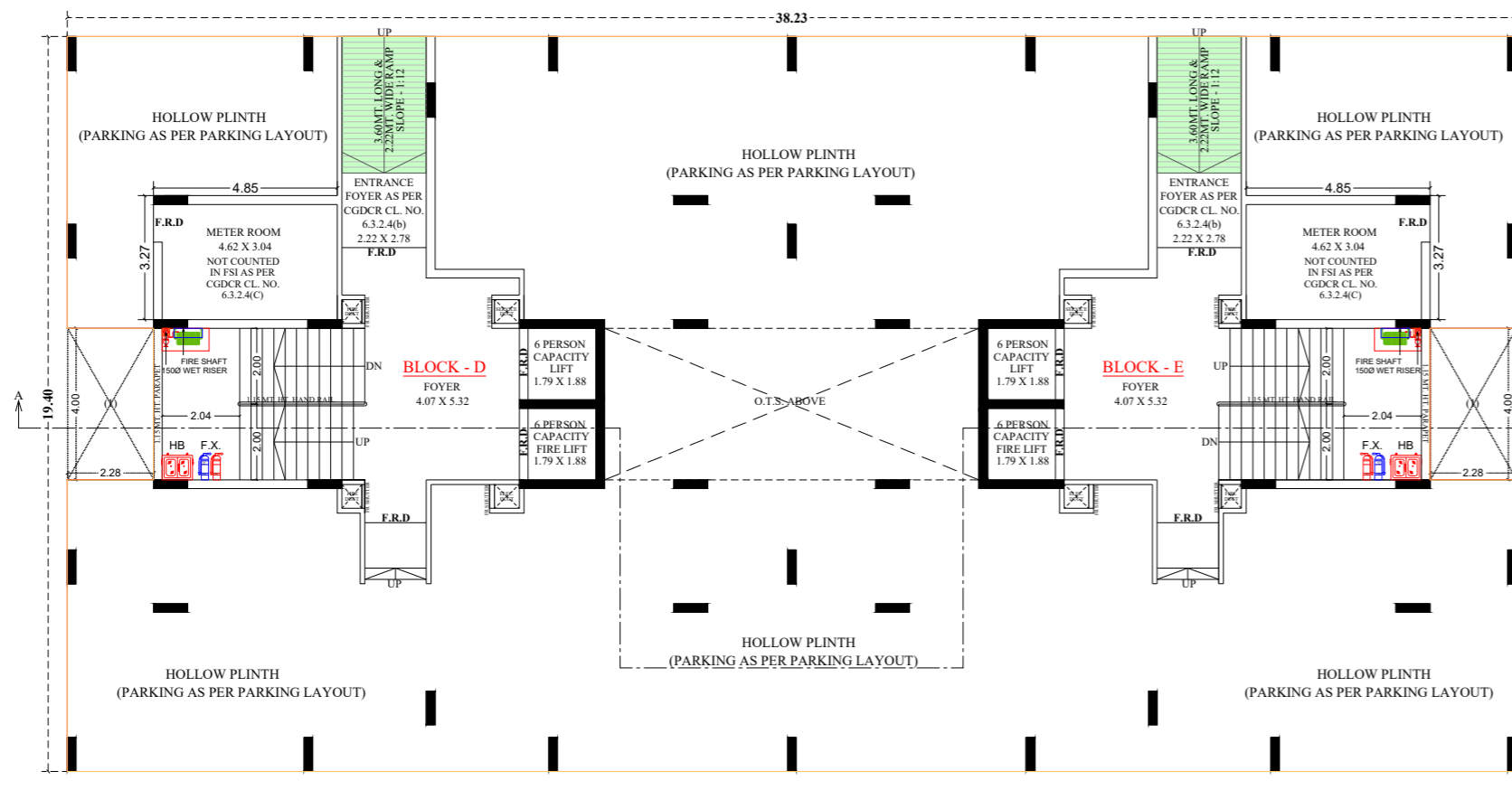
O.H.W.T PLAN



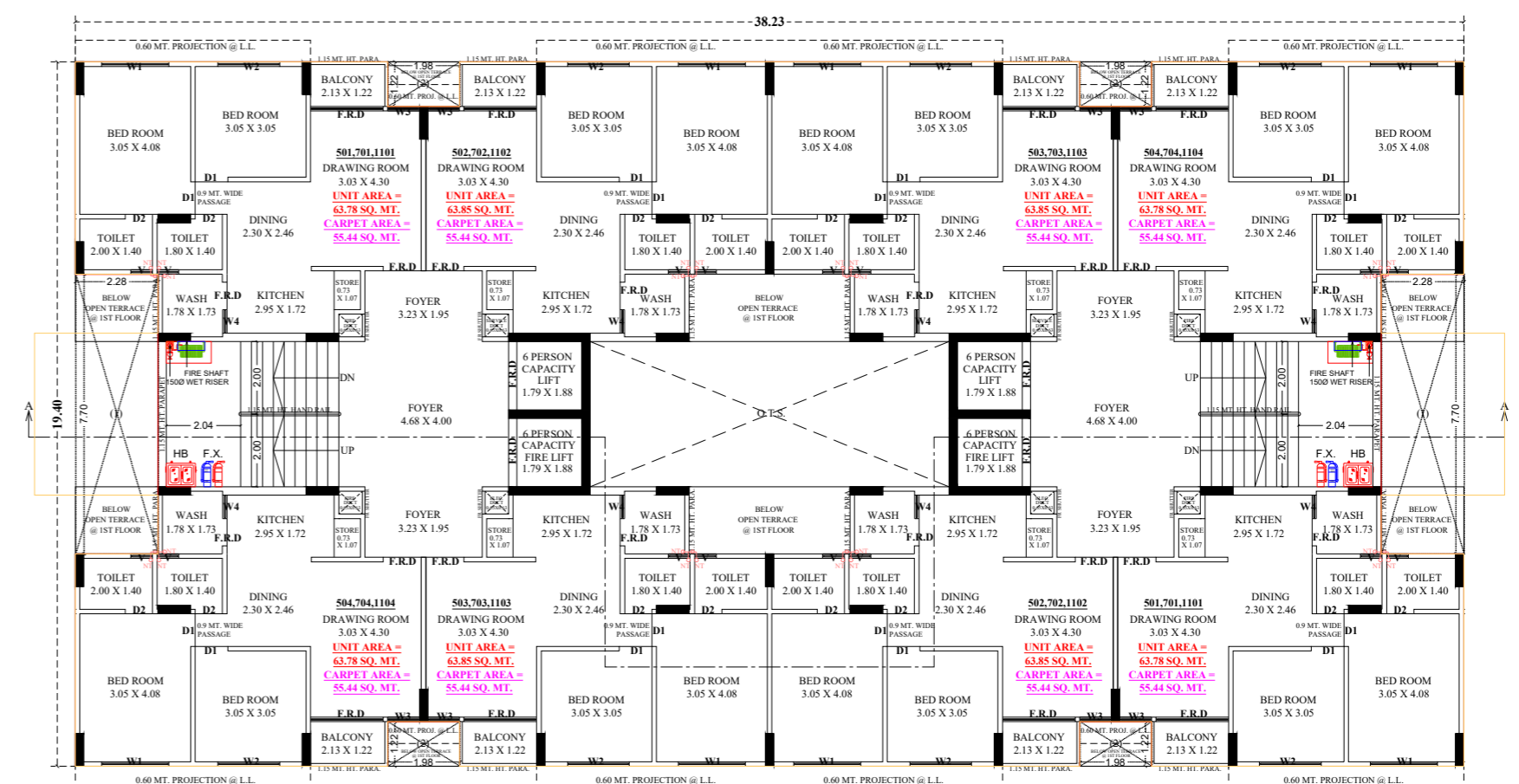
FIRST FLOOR PLAN
NOTE :- ALL OUTER & INTERNAL WALL ARE OF 0.13 MT. TH. BK WALL.



OPEN TERRACE PLAN (STAIR CABIN)
NOTE :- ALL OUTER & INTERNAL WALL ARE OF 0.23 MT. TH. BK WALL.



GROUND FLOOR PLAN (HOLLOW PLINTH)
NOTE :- ALL OUTER & INTERNAL WALL ARE OF 0.23 MT. TH. BK WALL.



**TYPICAL FLOOR PLAN
5TH, 7TH, 11TH FLOOR**
NOTE :- ALL OUTER & INTERNAL WALL ARE OF 0.13 MT. TH. BK WALL.

SPECIFICATION

STRUCTURE

- R.C.C. Moment frame structure, seismically resistant adhering to IS-CODE guidelines.

FLOORING

- Vitrified tiles flooring.

KITCHEN

- Granite platform with Stainless Steel sink.
- Glazed tiles dado up to lintel level.
- Provision for R. O. point with required electrical & plumbing point.

BATHROOMS/TOILET

- Anti-skid flooring.
- Glazed tiles dado up to lintel level.
- Quality Bathroom accessories and fittings.

DOORS & WINDOWS

- Laminated flush doors with MS frame.
- Premium quality aluminium section.

WASH AREA

- Anti-skid flooring.
- Provision for washing machine fittings with electrical and plumbing point.

MECHANICAL ELECTRICAL & PLUMBING

- Concealed copper wiring with M.C.B / E.L.C.B.
- Plenty of electrical sockets with quality switches.
- Quality U.P.V.C. pipes for regular water supply.
- Quality C.P.V.C. pipes for hot water supply.
- Quality P.V.C pipe for drain.

TERRACE

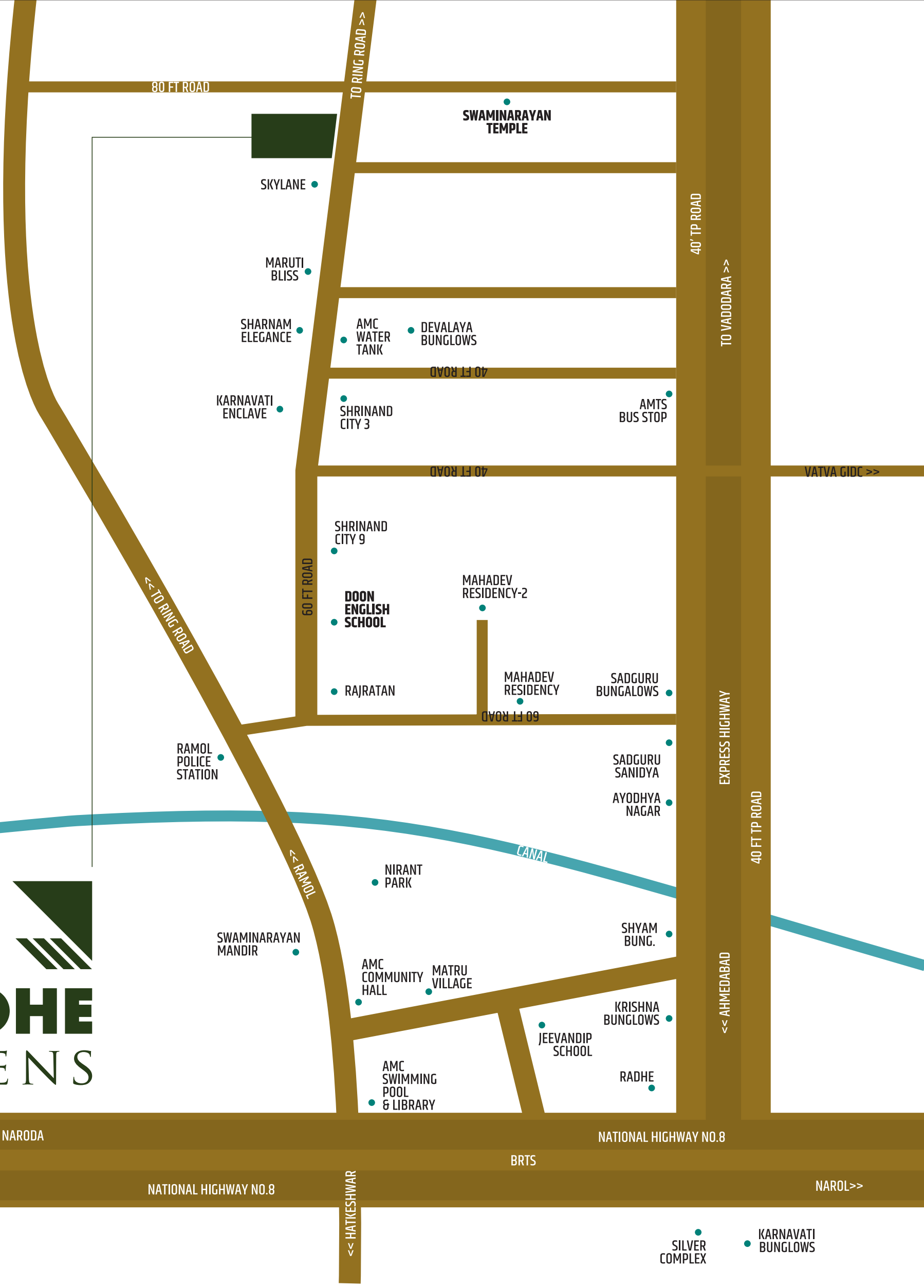
- Open terrace with leak proof floor.

PLASTER & PAINTS

- Inside : Single coat mala plaster with wall putty finish.
- Outside : Double coat mala plaster with texture or exterior paint for attractive elevation.



RADHE GREENS



RADHE GREENS, RAMOL, AHMEDABAD

☎ 99790 03737

✉ nanddevelopers111@gmail.com

DEVELOPED BY

NAND DEVELOPERS

ARCHITECT

AVESH GHANCHI

STRUCTURE

SPACTAL

RERA REGISTER NO.

RERA WEBSITE : WWW.GUJRERA.GUJARAT.GOV.IN