


LIVE UNINTERRUPTED.




INTRODUCING



**RUNWAL
MYCITY**
KALYAN - SHIL RD, DOMBIVLI EAST

THE CITY of CITIES
A mélange of routine and recreation



Home is a place where you can relentlessly be yourself. A space that you can call your own, with your favourite corners, where your loved ones feel safe. Here you adorn each room with love and affinity, without any constraints. We're here to bring you the same experience so that you live your life,

UNINTERRUPTED.

ARTIST'S IMPRESSION

DOMBIVLI

The Hub of Heritage

Known especially for its Marathi culture and unremittingly high literacy rate, Dombivli is a busy city with a rich history dating back to the year 1075 and an impeccable transformation in the near future making it the next big Smart City.



UNINTERRUPTED FUTURE

Gearing up for Gen-Next

With future-friendly infrastructure built on the foundation of a rich heritage, the entire corridor is a paragon of transformation which suits not just you, but the coming generations too.



UNINTERRUPTED CONNECTIVITY

Bringing the world closer to you

Enjoy greater connectivity to both nearby cities and faraway places with rapidly transforming infrastructure. Now commutes will be uninterrupted with upcoming highways and freeways, railway, metro, monorail and the Navi Mumbai Airport.



IMAGE FOR REPRESENTATION PURPOSE



Located At The Center Of The Golden Triangle - Kalyan, Thane And Navi Mumbai



Proposed Metro Corridor And Freeway



Virar Alibaug Multi Modal Corridor



Proposed Airoli-Katai Tunnel Road



Proposed Mankholi – Mothagaon Bridge



Upcoming Smart City



30 Minutes From Upcoming Navi Mumbai Airport



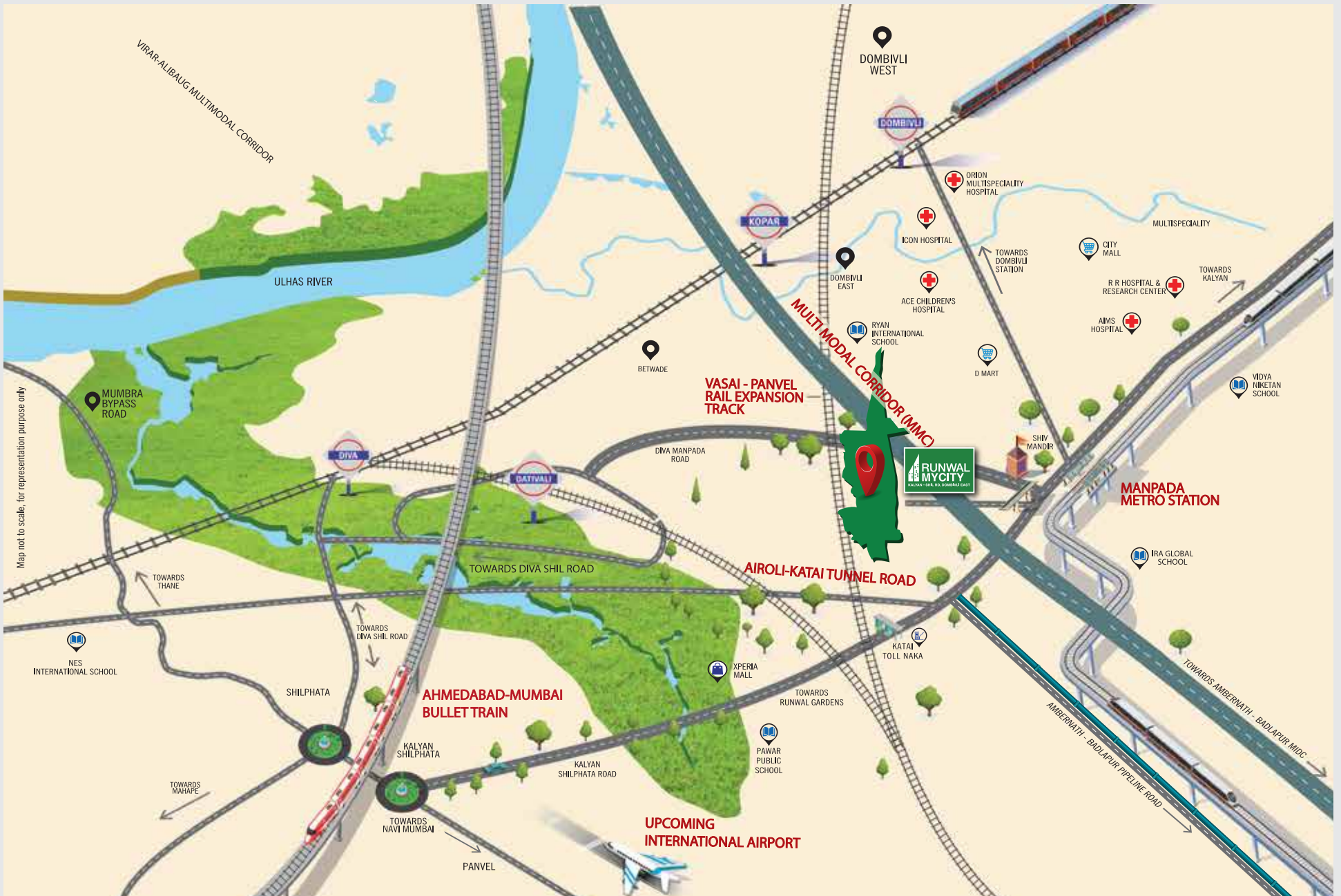
Ahmedabad Mumbai Bullet Train

UNINTERRUPTED COMFORT

Stay amid serenity

With your home strategically located close to all the important landmarks including 7 large natural lakes with a 32 km waterfront, you no longer have to go too far to take a break from your routine. With a locale that brings a lot of opportunities, get used to living life without restraints.

SOCIAL INFRASTRUCTURE



CONNECTIVITY

- Kalyan - Shil Road - 1.5 km
- Dativi - 2 km
- Diva - 3.5 km
- Dombivli - 6.5 km

RETAIL & RECREATION

- City Mall
- DMart
- Xperia Mall

SCHOOL

- Ryan International School
- EuroSchool
- NES International School
- Royal International School
- Ira Global School
- Pawar Public School
- Vidya Niketan School

HOSPITALS

- AIMS Hospital
- Orion Multispeciality Hospital
- ACE Childrens Hospital
- Icon Hospital
- RR Hospital Research Centre



ARTIST'S IMPRESSION

RUNWAL MYCITY

A city, that has it all

Step into a township that puts your needs and convenience first with commercial hubs, educational institutes, healthcare facilities and recreational areas just a few minutes away from your exquisite residence. A place with everything that you need so that you get to experience **life uninterrupted.**



ARTIST'S IMPRESSION

UNINTERRUPTED EXPANSE

A 156-acre township development
to call your home

An expansive integrated township, sprawling across 156-acre, offering 1, 2 and 3 BHK residences with a 5-acre sports complex, central greens spread over 6-acre and 32-acre of open spaces across the entire township.



ARTIST'S IMPRESSION

UNINTERRUPTED RECREATION

Be the talk of the town

Here's a township with everything you need and want. Now get township amenities as well as dedicated amenities for each residential pocket to brighten up a dull day. With its endless recreation and rejuvenation facilities, green spaces, interactive corners, sports arena, you'll barely need to step out of **Runwal MyCity**.



ARTIST'S IMPRESSION



PRESENTING, SMART CITY

Spread across 156-acre for ample space



ACTUAL IMAGE



DEDICATED CLUBHOUSE

A zone to rejuvenate and unwind



DESIGNATED CAR PARKING

Enjoy exclusivity everyday



IMAGE FOR REPRESENTATION PURPOSE



HEALTHCARE FACILITY

State-of-the-art health care



IMAGE FOR REPRESENTATION PURPOSE



IMAGE FOR REPRESENTATION PURPOSE



COMMERCIAL OFFICES

Global standards
within reach



SHOPPING

Retail and high-street choices



ARTIST'S IMPRESSION



IMAGE FOR REPRESENTATION PURPOSE



EDUCATIONAL INSTITUTE

Ryan International School
spread across 1 Lac sq.ft.

*PROPOSED



WIDE ROADS

18m, 24m and 30m
congestion-free roads



ARTIST'S IMPRESSION



IMAGE FOR REPRESENTATION PURPOSE



OUTDOOR CAFÉ

For fresh conversations
and hot coffee

*PROPOSED



CENTRAL PARK

Runwal MyCity has over 6-acre of interactive spaces built for your rejuvenation and the break that you need every day

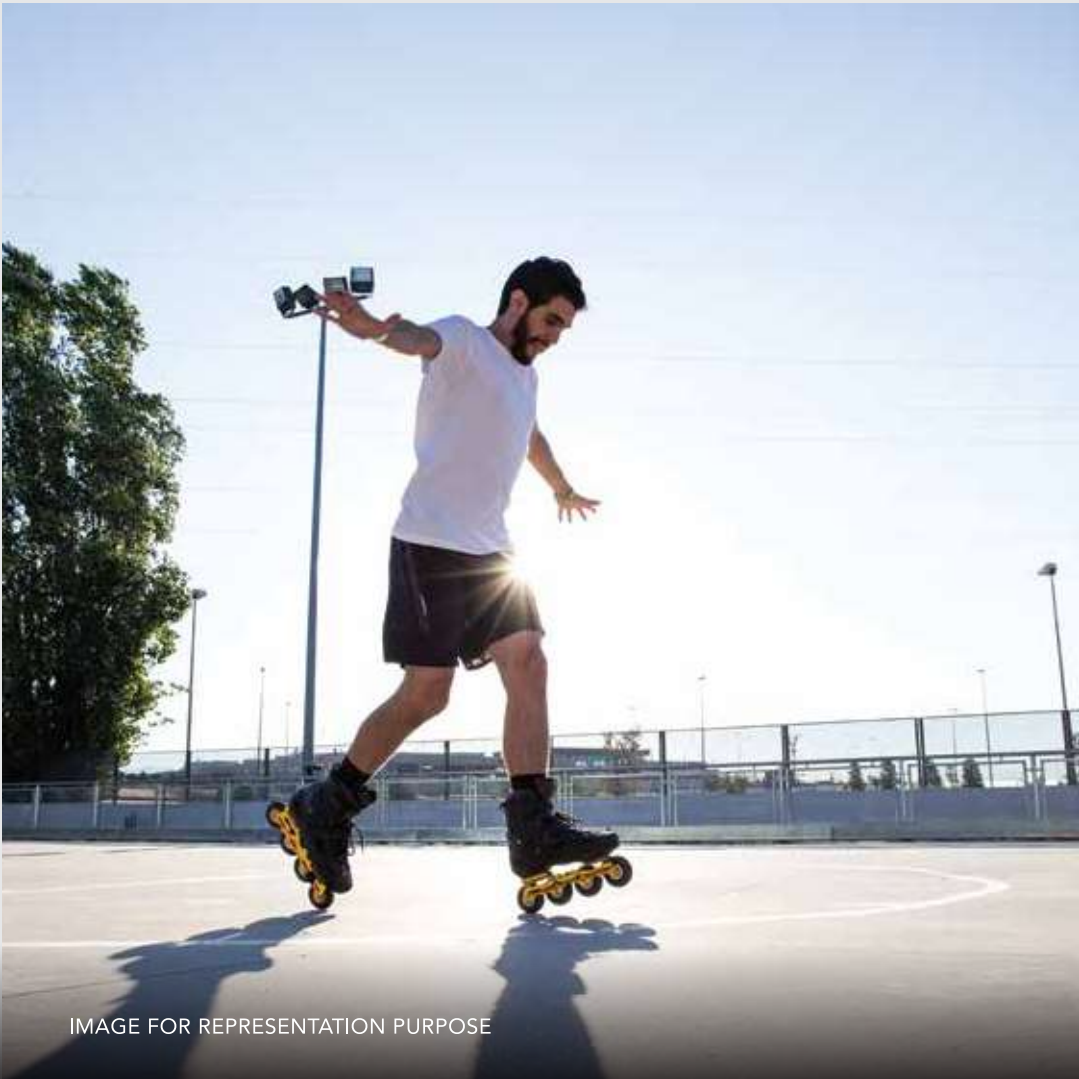


IMAGE FOR REPRESENTATION PURPOSE



SKATING RINK

Recreational area for everyone



JOGGING TRACK

Active life just a few
steps away



ARTIST'S IMPRESSION



IMAGE FOR REPRESENTATION PURPOSE



YOGA GARDEN

Natural healing



MEDITATION MOUNDS

Mindfulness uninterrupted



IMAGE FOR REPRESENTATION PURPOSE



IMAGE FOR REPRESENTATION PURPOSE



PET'S PARK

Exercise pets off-leash



OPEN-AIR THEATRE

Watch blockbusters
beneath the open skies



ARTIST'S IMPRESSION



ARTIST'S IMPRESSION

SPORTS ACADEMY

Spread across 5-acre, Runwal MyCity gives you a plethora of opportunities to please your sporty side and the freedom to enjoy sports without having to shell out elsewhere



IMAGE FOR REPRESENTATION PURPOSE



MULTIPURPOSE COURTS

Includes Volleyball, Gymnastic,
Badminton and many other courts



CYCLING TRACK

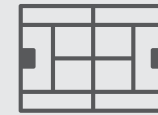
4600m of a two-way stretch
surrounded by greens



IMAGE FOR REPRESENTATION PURPOSE



IMAGE FOR REPRESENTATION PURPOSE



TENNIS COURT

3 courts in the sports academy



CRICKET GROUND

50m (L) * 70m (W)
along with seating stands

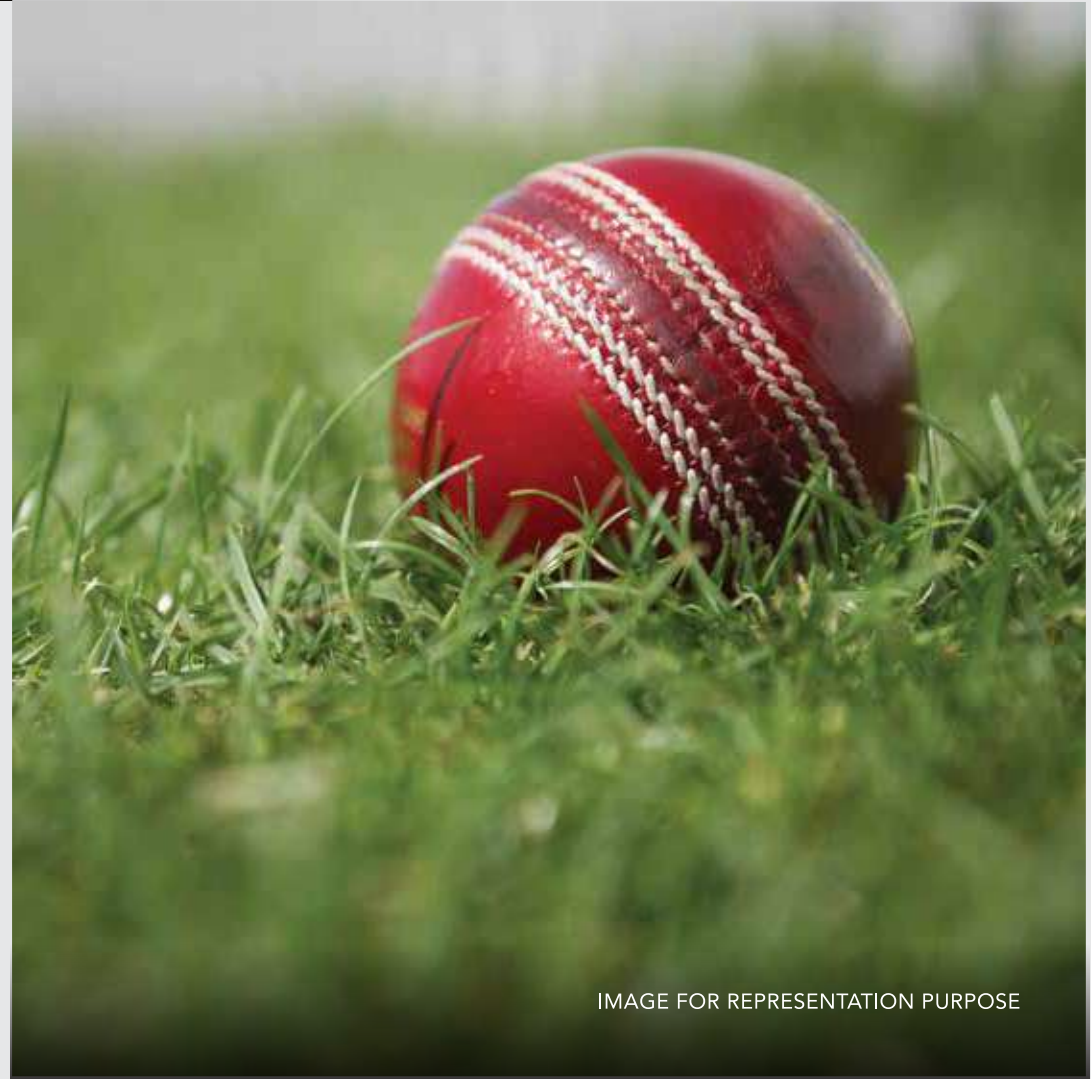
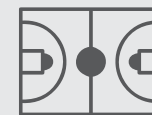


IMAGE FOR REPRESENTATION PURPOSE



IMAGE FOR REPRESENTATION PURPOSE



BASKETBALL COURT

2 courts in the sports academy



ATHLETIC TRACK

6-lane all-weather synthetic track fully equipped with facilities for all athletes

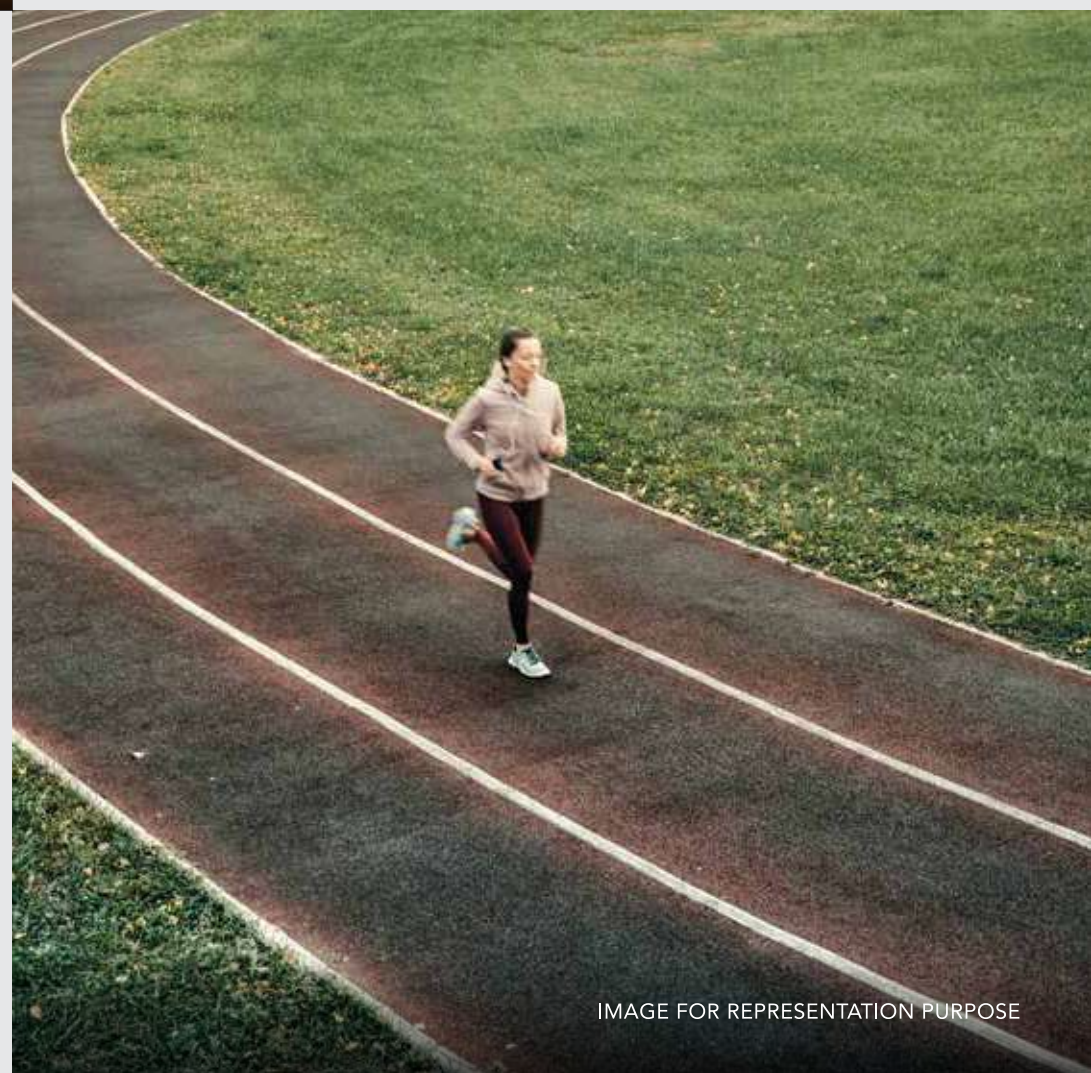
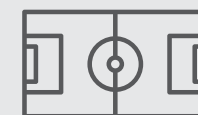


IMAGE FOR REPRESENTATION PURPOSE



IMAGE FOR REPRESENTATION PURPOSE



FOOTBALL FIELD

6000 sq.mt. FIFA standard football
field with seating capacity



SWIMMING POOL

Dive in and relieve your stress

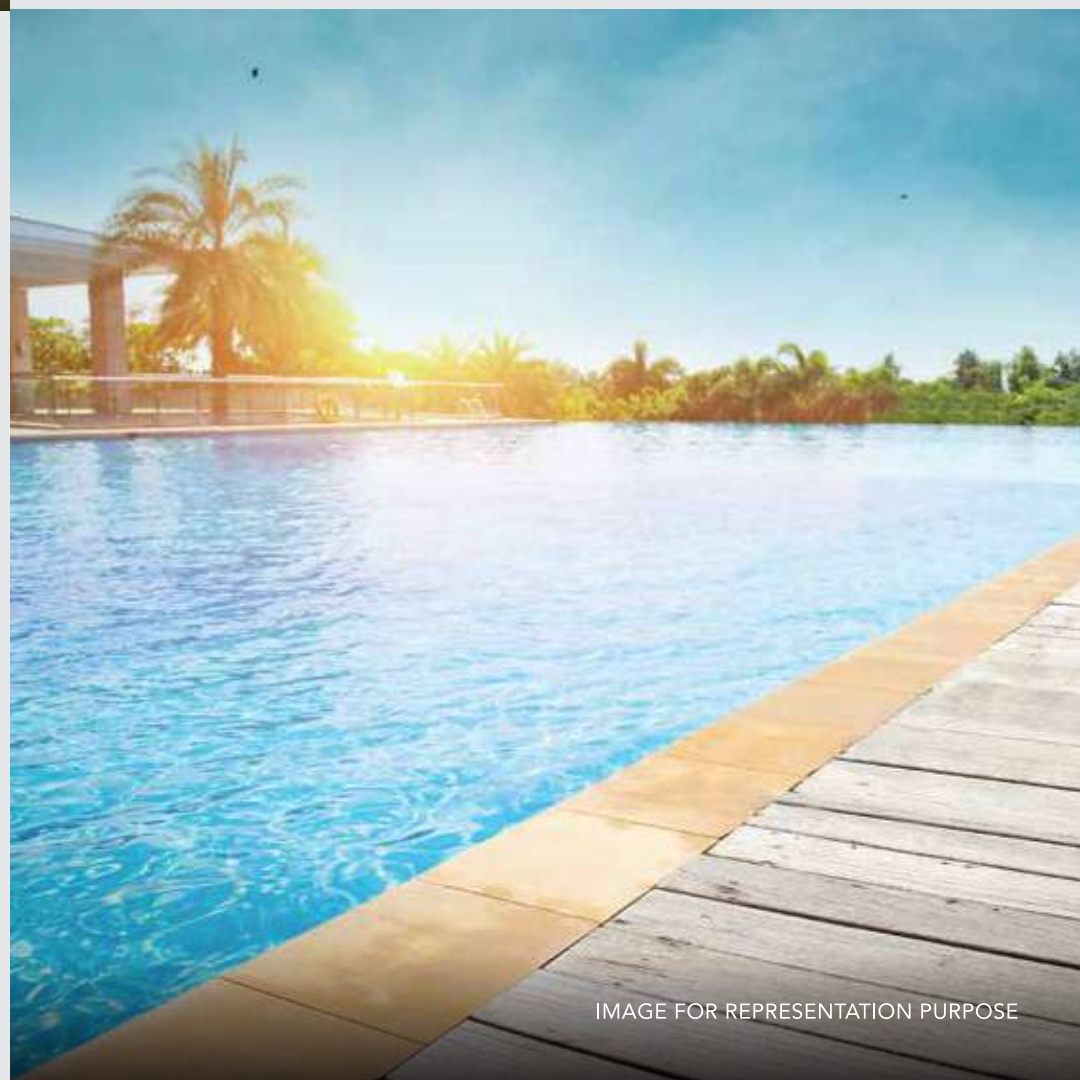


IMAGE FOR REPRESENTATION PURPOSE



ACTUAL IMAGES

**POSSESSION OFFERED TO
4000+ FAMILIES**

UNINTERRUPTED OPPORTUNITIES

Step into a new city.
Step up to a new lifestyle.

From Vista City with panoramic views to Blossom City with lush botanical gardens, and Smart City with state-of-the-art amenities, Runwal MyCity offers a balanced blend of nature, technology, landscapes and much more.





PRESENTING, VISTA CITY.

Spread across 8.5-acre and 10 towers with 1, 2 and 3 BHK residences, 1100+ families have made Vista City their dream home. It offers residence the most pleasant views of Parsik Hills and Ulhas River, along with 1.7-acre of green spaces and a great set of amenities.





UNINTERRUPTED BEGINNINGS

Live smarter, live better.

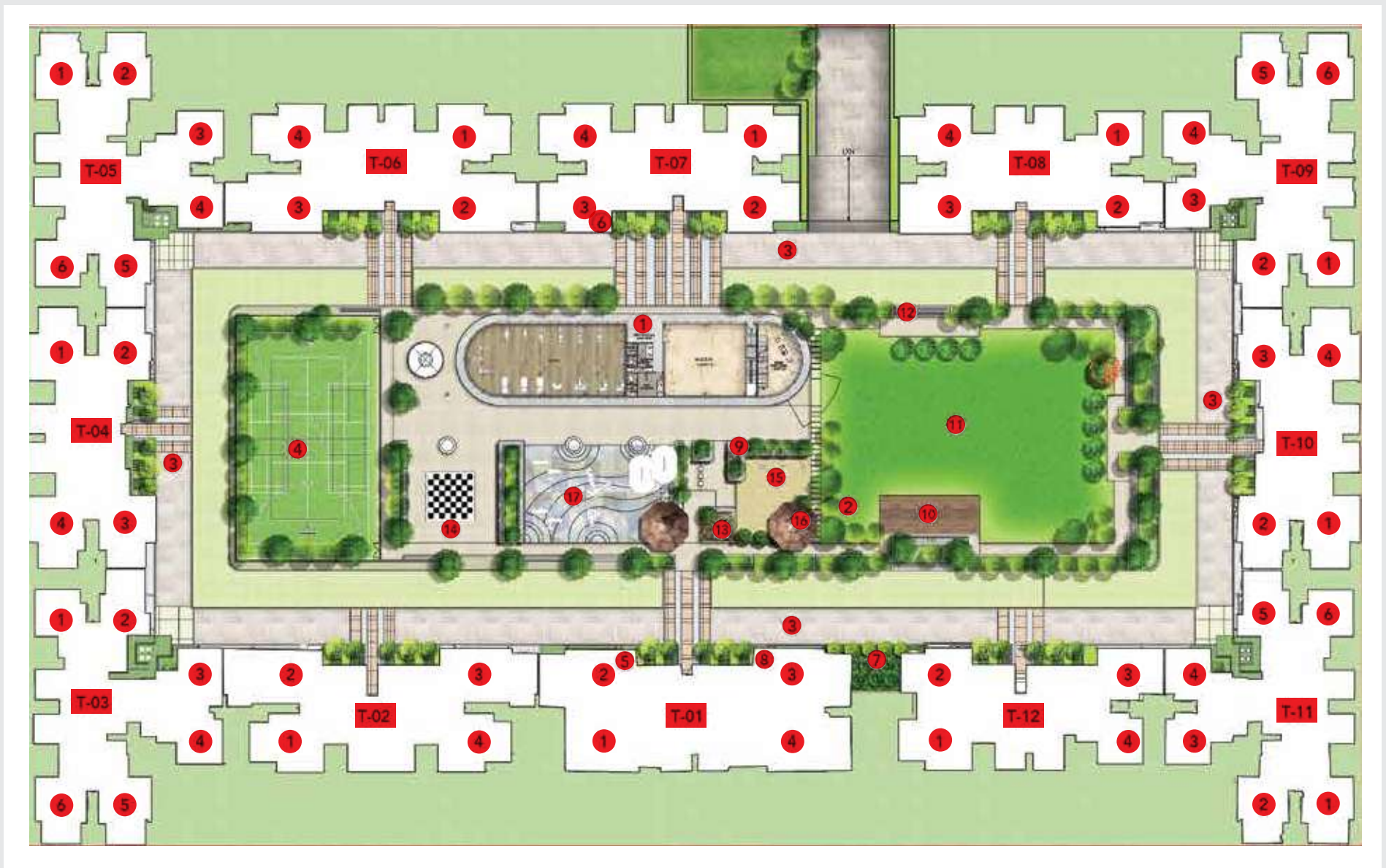


ARTIST'S IMPRESSION

PRESENTING, SMART CITY.

Take a breath of fresh air and experience a sense of serenity in Smart City, away from city's chaos. With 12 towers consisting of 1, 2 and 3 BHK residences, Smart City is truly the heart of Runwal MyCity.

MASTER PLAN LAYOUT FOR SMART CITY



YOUR KIND OF BREAK

Packed with every amenity to make your life comfortable, it is your little piece of heaven. A long day at work will no longer be the only highlight of your day.

A M E N I T I E S



1) Clubhouse



a) Gymnasium



b) Party Hall



c) Indoor Games



d) Reading Lounge



2) Party Lawn



3) Jogging Track



4) Multipurpose Court



5) Reading Corner



6) Elderly Social Space



7) Picnic Area



8) Youth Corner



9) Seasonal Garden



10) Performance Area



11) Central Green



12) Stepped-lawn Seating



13) Colour Garden



14) Checkered Play Area



15) Green Play Area



16) Fitness Area



17) Meditation Zone



18) Leisure-stepped Seating



19) Kids' Playscape



20) Barbeque Area

Presenting, Blossom City.

UNINTERRUPTED PROSPERITY

Bloom into a better tomorrow

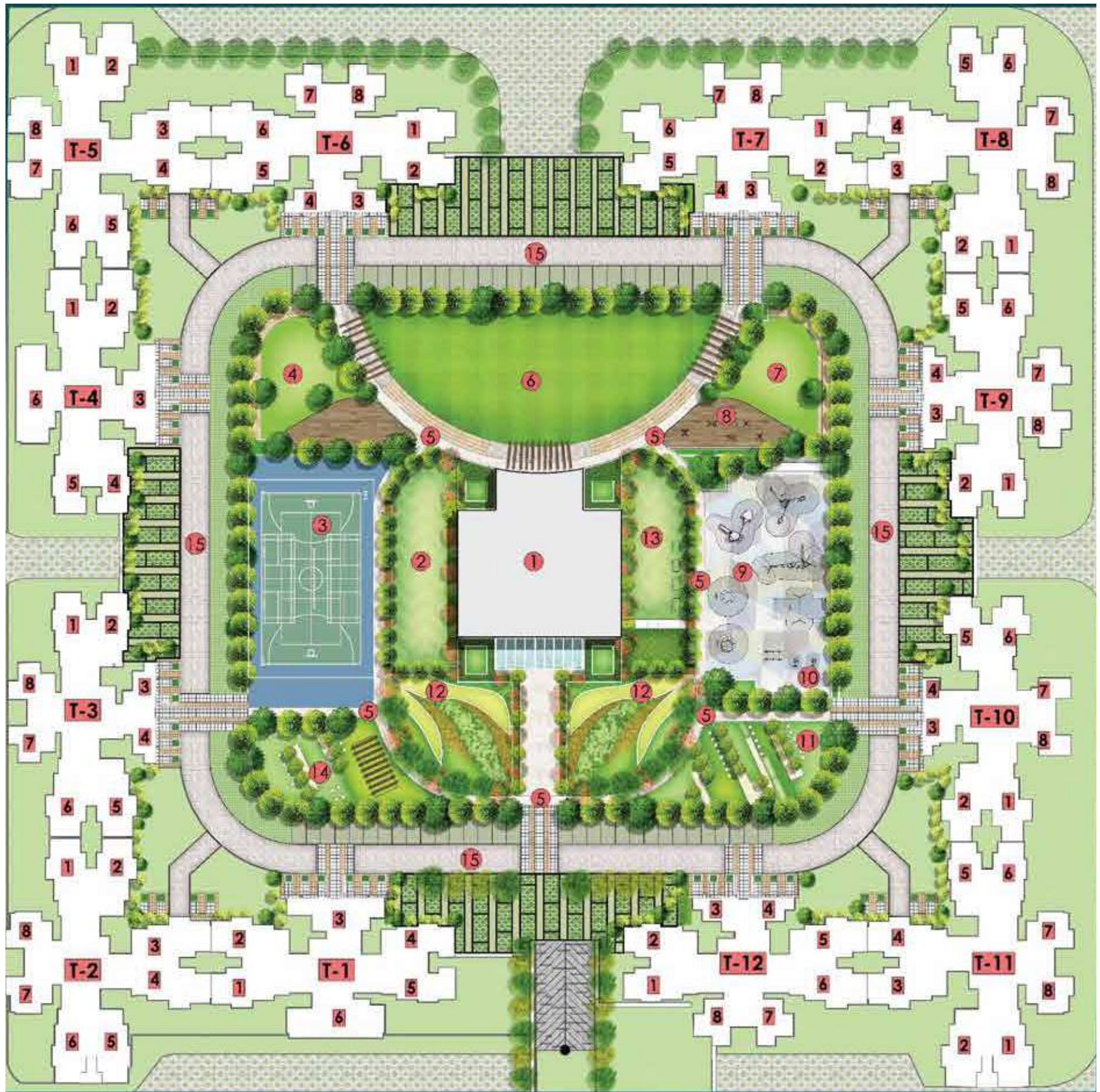


ARTIST'S IMPRESSION



UNINTERRUPTED FRESHNESS

Fragrance of flowers, surroundings covered in lush greens and a lifestyle marked with top-of-the-line amenities & endless opportunities.



THE ESSENCE OF A MEMORABLE LIFE

Find yourself amidst a range of amenities at the largest podium spread over 75000 sq. ft. (1.7-acre) curated for all your family's needs and recreation.

A M E N I T I E S



1) Clubhouse



2) Party Lawn



3) Multipurpose Court



4) Performance Area



5) Strolling Path



6) Playground



7) Yoga Lawn



8) Outdoor Fitness



9) Interactive Playground



10) Toddlers' Play Area



11) Seasonal Garden



12) Barbeque Area



13) Elderly Seating



14) Jogging Track

ABOUT RUNWAL GROUP

Established in 1978, the Runwal Group is one of Mumbai's premier real estate developers, operating in the residential, commercial and organised retail verticals. With a robust track record of 51+ delivered projects, with about 35000+ families living happily, the group has continuously striven to keep the customer as a focal point in the designing, planning and construction of all its projects. Today, the group's steadfast focus on quality has led it to become an industry leader and a market-driven construction company, renowned for trust and quality, along with on-time delivery.



RESIDENCES ONGOING PROJECTS

Runwal Anthurium
Runwal Eirene
Dahlia - Runwal Garden City
Runwal Elegante
The Residence
Nirvana
Runwal Pearl
Runwal Elina
Runwal Serene
The Reserve
The Sanctuary
The Central Park - Phase 1

TOWNSHIP

MyCity, Dombivli

MALLS

R City Mall, Ghatkopar

R Mall, Mulund (W)

R Mall, Thane

R Odeon, Ghatkopar (E)

OFFICES

R Square

R City Offices



**WE PROMISED. YOU TRUSTED.
WE DELIVERED.**



35000+ Families

Portfolio of **65+** projects

50+ projects delivered

A legacy of **45+** years





RUNWAL MYCITY

KALYAN - SHIL RD, DOMBIVLI EAST

☎ 6931 5717

mycity@runwal.com

Site: Diva Manpada Rd., Off. Kalyan-Shil Rd., Dombivli, Maharashtra - 400612.

MahaRERA registration number MyCity Phase I Part I - P51700000528, Phase I Part II - P51700009168, Phase II Cluster 4 - P51700008440,
Phase II Cluster 5 Part I - P51700019085, Cluster 5 PART II - P51700032157, Cluster 5 PART III - P51700027171. Available on the website <https://maharera.mahaonline.gov.in>