



TARANGAN

# GRACEFUL LIVING BY THE RIVER

Tarangan is where the calm of the Indrayani River meets the beauty of a star-filled sky. This thoughtfully designed riverside community in Moshi Prime offers 2 BHK homes with timeless architecture, soothing landscapes, and a lifestyle that feels elevated every single day.

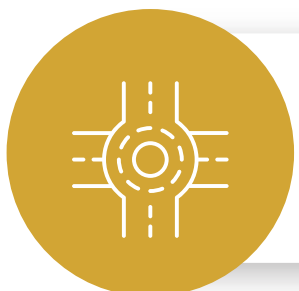


# MODERN LIVING WITH A CELESTIAL TOUCH

Every residence at Tarangan is planned to balance privacy, comfort, and a true sense of community. Spacious layouts flow naturally, while rooftop leisure zones invite you to unwind under the sky. Premium finishes and future-ready features ensure your home stays elegant and practical for years to come.



**Ultra Efficient Layouts**



**1 Min from Bharat Mata Chowk Moshi**



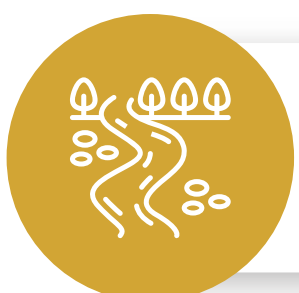
**Premium specifications with future-ready features**



**30+ Resort Like Amenities**



**Developer with 20+ Years of trusted legacy**



**River-facing location in Moshi Prime**

# BY THE RIVER, IN THE HEART OF THE CITY

Wake up to the serene Indrayani River while staying fully connected to Pune and PCMC. Just a minute from Bharat Mata Chowk and with the upcoming DP Road close by, Tarangan offers the rare mix of peaceful riverside living and effortless city access.



River facing location with Panaromic views



1 min from Bharat Mata Chowk

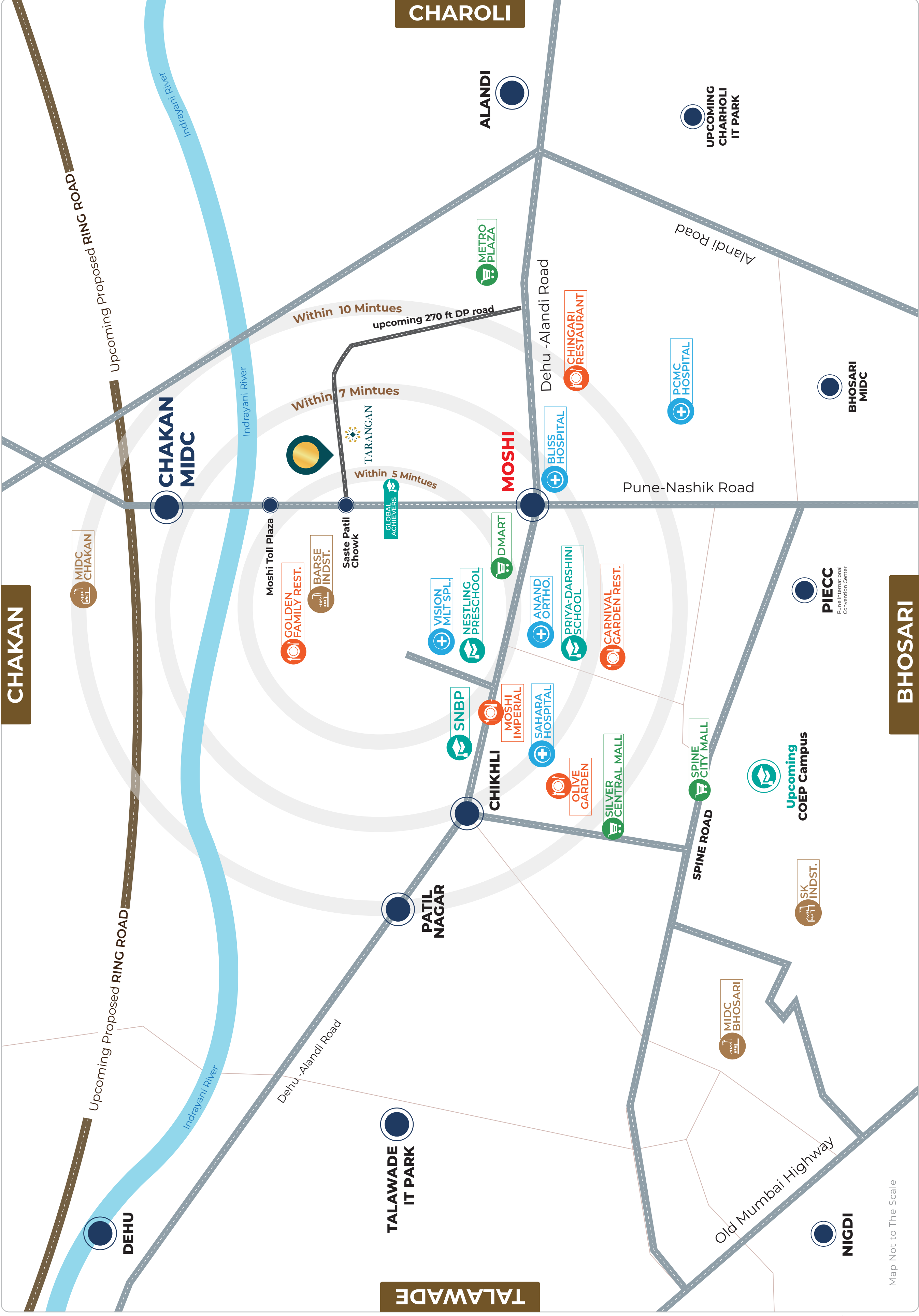


Seamless connectivity to PCMC & Pune city



Upcoming DP Road connecting the project





**CHAKAN**

**CHAROLI**

**BHOSARI**

**TALAWADE**

Map Not to The Scale

## KEY DISTANCES

### EDUCATION

New Indrayani English Medium School	1 Min
Silver Birch International School	8 Min
Nestling Pre School	7 Min
City Pride School	8 Min
SNBP Internation School & College	9 Min

### HEALTHCARE

Sahara Hospital	7 Min
Anand Orthopedic Hospital	5 Min
Varad Multispecialty Hospital	5 Min
Bliss hospital	5 Min
Swasthya clinic	4 Min

### RESTAURANT & HOTELS

Moshi Imperial	5 Min
Olive Garden Restaurant	9 Min
Chingari Restaurant	6 Min
New Moshi Grrand	5 Min
Pathare Mutton Khanawal	10 Min

### SHOPPING MALLS

D Mart	5 Min
Silver Central Mall, Moshi	10 Min
Spine City Mall	12 Min
Indrayani mall	12 Min

### INDUSTRY

Talawade IT Park	20 Min
Bhosari MIDC	24 Min
Chakan MIDC	27 Min

### CONNECTIVITY

Chikhli Bus stop	14 Min
Pune international Airport	40 Min
Chinchwad	20 Min
Nashik Phata	20 Min
Moshi phata	9 Min

# THE NEXT BIG DESTINATION IN PUNE

Prime Moshi is quickly emerging as one of Pune's most sought-after addresses, combining modern lifestyle aspirations with strong infrastructure. With the upcoming Pune Ring Road crossing the Indrayani River and the Pune–Nashik Highway just a minute away, Tarangan offers exceptional convenience today and promising growth for the future.



Upcoming IIM Campus



Upcoming CoEP Campus



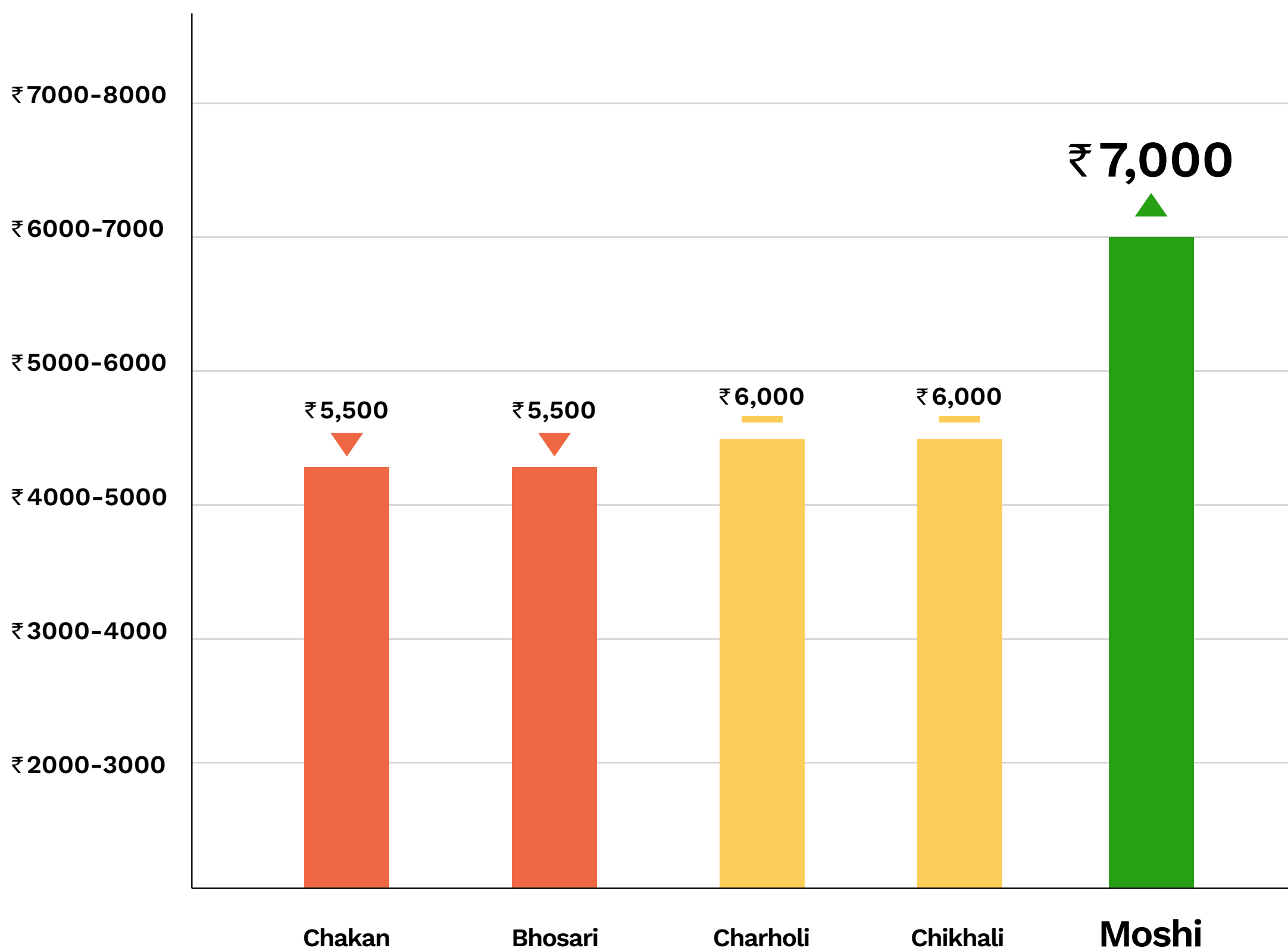
Close to Chakan and Bhosari MIDC



5 mins from Talawade IT Park



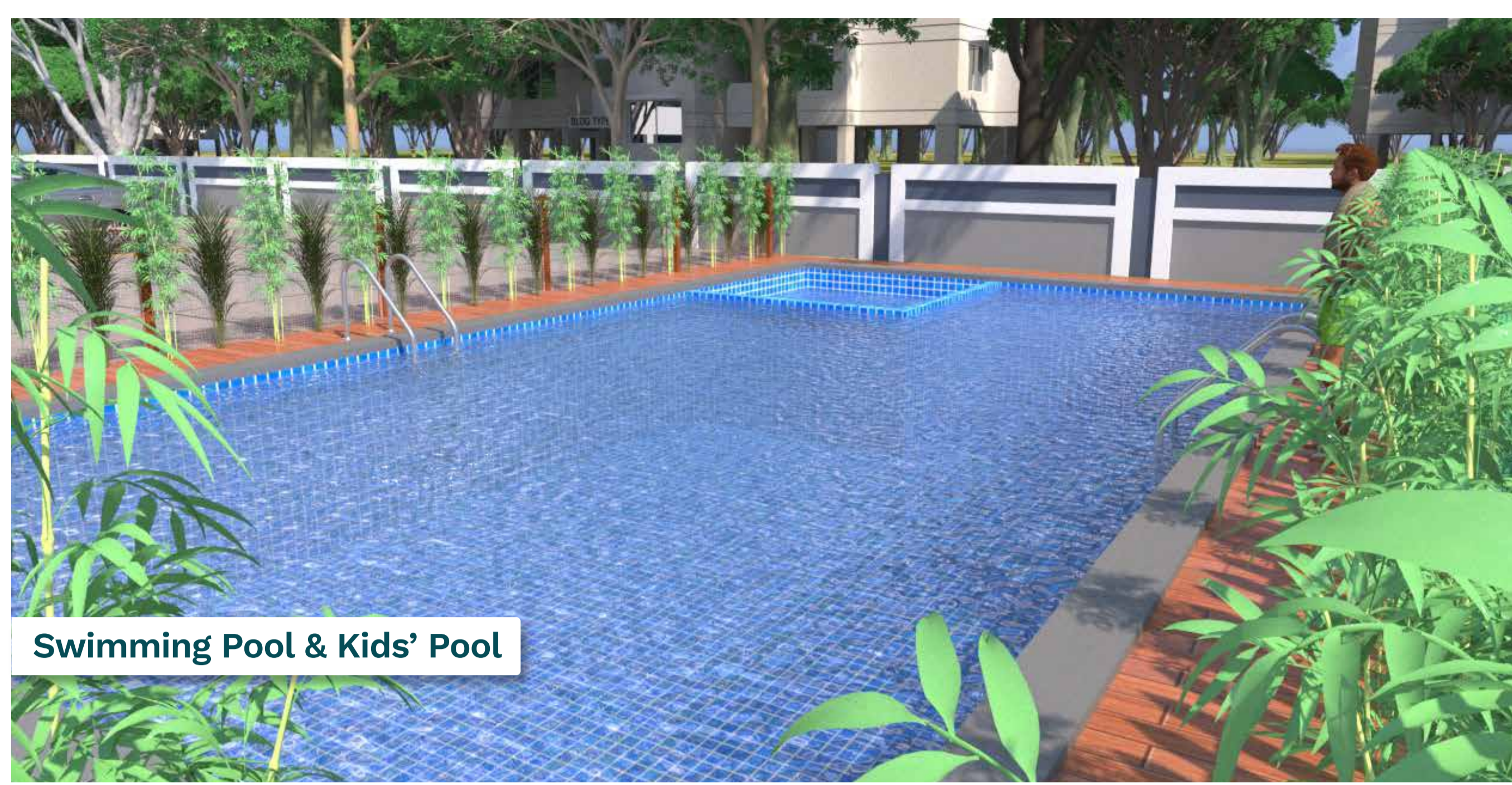
5 mins from D-mart



Growth Graph of Moshi

# AMENITIES FOR WELLNESS & JOY

From refreshing swims to rooftop fitness sessions, Tarangan surrounds you with spaces for health, recreation, and connection. Landscaped gardens, senior citizen retreats, family lounges, and jogging tracks make every day feel like a mini vacation without leaving home.



Swimming Pool & Kids' Pool



Landscaped Gardens



Open-Air Yoga Deck



Rooftop Lounge with Pergola Seating



Kids Play Area



Senior Citizen Park & Hammock Zones



Reflexology Pathway & Herbal Plantations



B-Building

A-Building

# RESIDENCES OF ELEGANCE & FUNCTION

Life inside a Tarangan home is equally enriching. Wake up to natural light and cool river breezes flowing through cross-ventilated spaces. Enjoy relaxed conversations in a living room that opens to a balcony, perfect for evening tea or weekend gatherings.

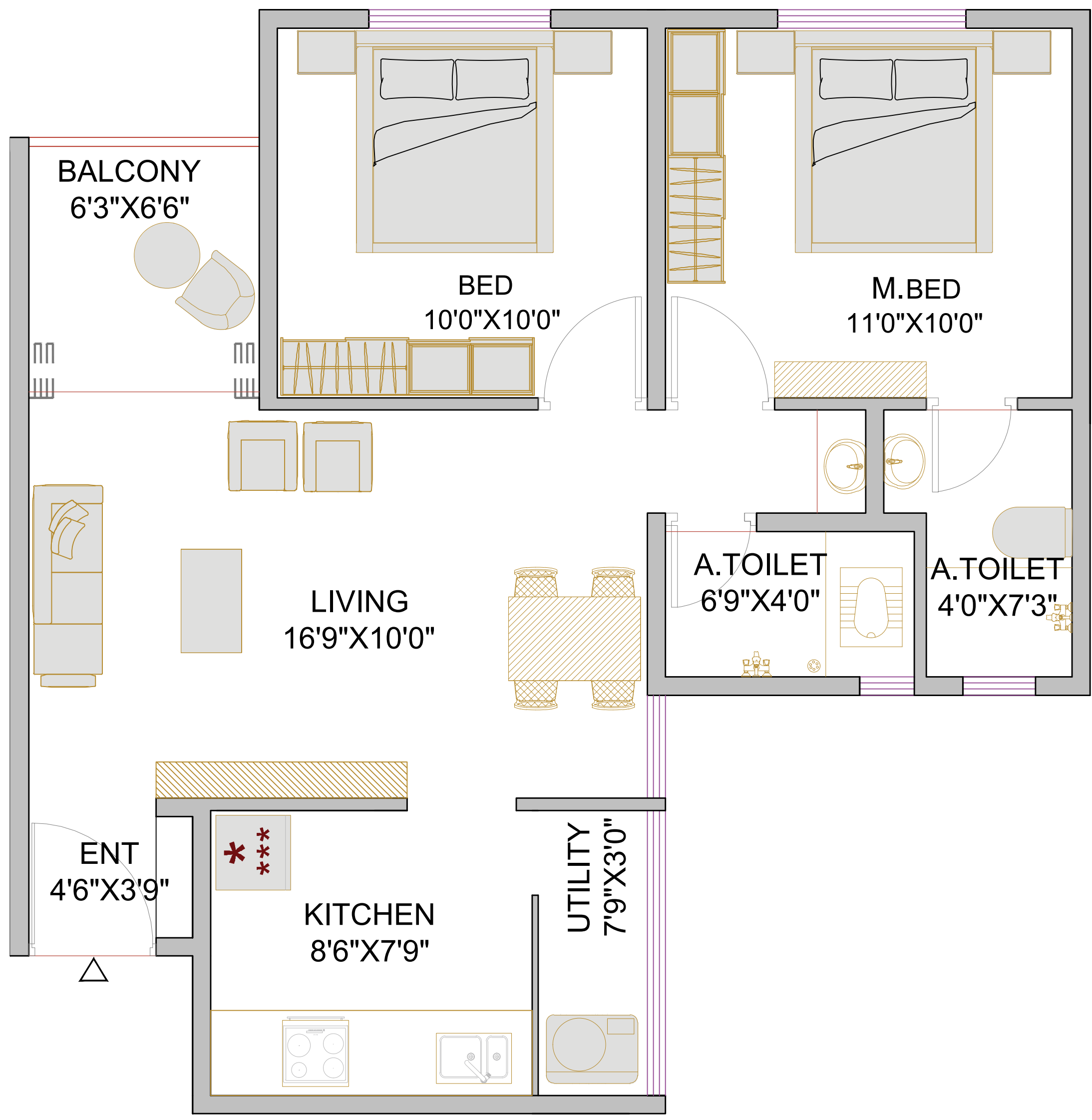
- ◆ **Living Room with balcony extension**
- ◆ **Master Bedroom with AC point & wooden-finish tiles**
- ◆ **Common Bedroom ideal for children/guests**
- ◆ **Kitchen with granite platform & utility balcony**
- ◆ **Attached toilets with branded fittings & solar hot water**
- ◆ **6 homes per floor**
- ◆ **Wide passages with dual lifts**
- ◆ **Fire lift for enhanced safety**
- ◆ **Floor efficiency with natural light & ventilation**

## Floor Plan A Building

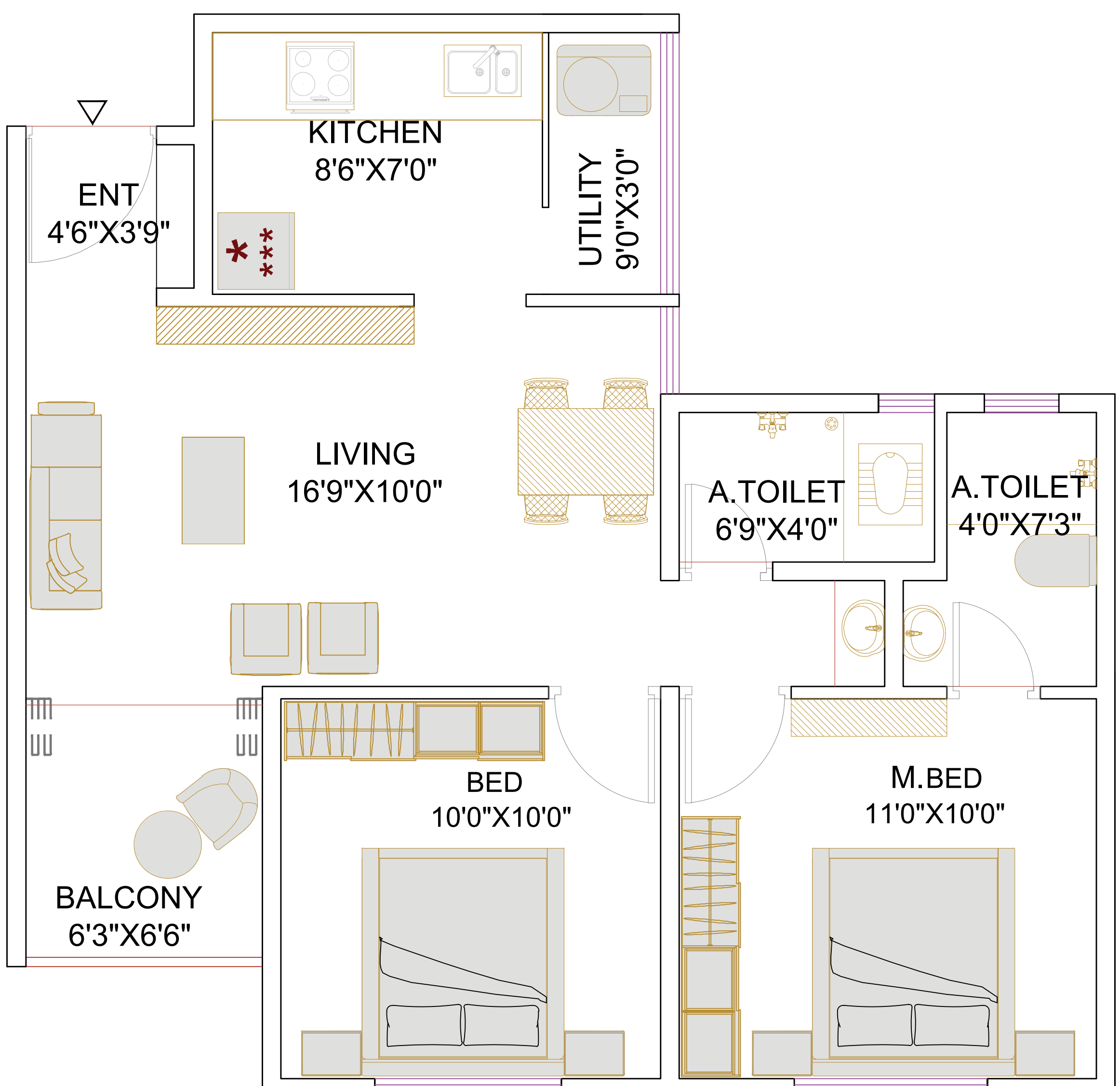


Floor	Unit No	Rera Carpet Area	Enclosed Balcony/ Living Balcony	Dry Balcony	Total
Typical Floor	101, 102, 103, 105, 106, 201, 202, 203, 205, 206, 301, 302, 303, 305, 306, 401, 402, 403, 405, 406, 501, 502, 503, 505, 506, 601, 602, 603, 605, 606, 801, 802, 803, 805, 806, 901, 902, 903, 905, 906, 1001, 1002, 1003, 1005, 1006, 1101, 1102, 1103, 1105, 1106, 1301, 1302, 1303, 1305, 1306	536 Sq.Ft.	59 Sq.Ft.	40 Sq.Ft.	634 Sq.Ft.
	104 ,204, 304, 404, 504, 604, 704, 804, 904, 1004, 1104, 1204, 1304	520 Sq.Ft.	59 Sq.Ft.	40 Sq.Ft.	619 Sq.Ft.

### 1,2,3,5&6 SERIES 634 SQ.FT. CARPET



### 4 SERIES 619 SQ.FT. CARPET



# A LEGACY OF EXCELLENCE & TRUST

Tarangan is brought to you by a developer with over two decades of experience, known for delivering thoughtfully designed communities with precision and care. With multiple completed projects across Pune, a landmark township partnership, and a footprint in hospitality, their reputation is built on trust, quality, and timely delivery.



**Sai Ganesha**



**Siddhivinayak Classic**

- ◆ **20+ Years of trusted legacy**
- ◆ **5+ Delivered Projects in Pune**
- ◆ **Siddhivinayak Classic-delivered in 30 months, lock & key**
- ◆ **Partner in Garve-Patil Samrajya, a 6-acre landmark in New Sangvi**
- ◆ **Hospitality presence - premium resort in Konkan**
- ◆ **Reputation for timely delivery & lifestyle-focused projects**

**Call Us: 08065919358**



Site Address:

SR NO-61; Shikshak Colony; Shivajiwadi ; Moshi Haveli Pune, Pimpri Chinchwad(M Corp.), Pune , 412 105

email : [sales@taranganbysmmahalaxmi.com](mailto:sales@taranganbysmmahalaxmi.com) | web : [www.taranganbysmmahalaxmi.com](http://www.taranganbysmmahalaxmi.com)



MAHA-RERA Registration No.  
**PR1260002501080**  
[www.maharera.maharashtra.gov.in](http://www.maharera.maharashtra.gov.in)

**SAMRAJYA**  
By Garve-Patil Constructions



Artistic Impression