



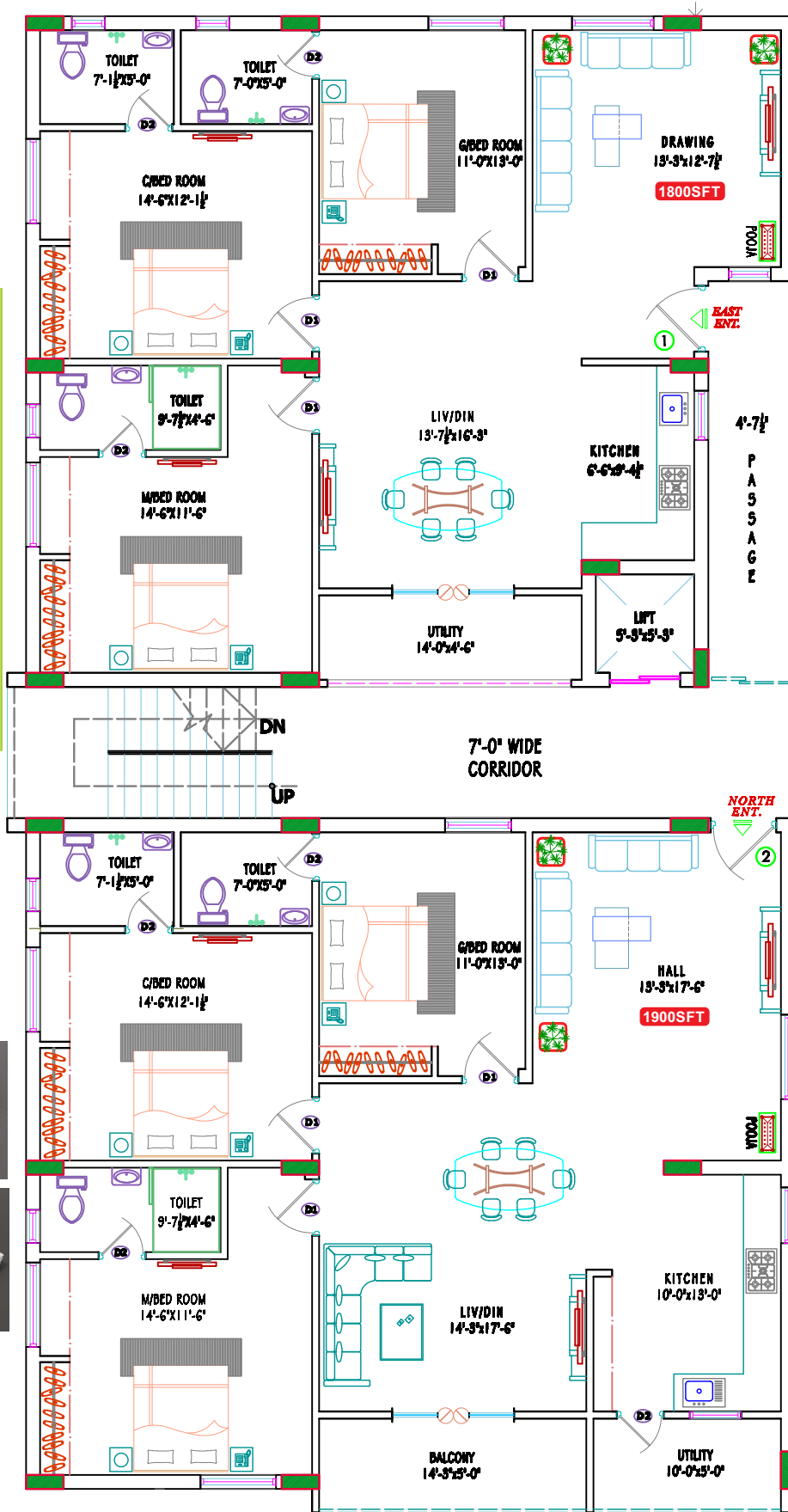
LOOKING for a home, LISTEN to your heart



BVR ORCHARD

Luxury 3BHK ALKAPOOR TOWNSHIOP

FLOOR PLAN



40'0" WIDE FEET ROAD

Area Statement

Flat No	Area in sft	Facing
1	1800 Sft	3 BHK
2	1900 Sft	3 BHK

SPECIFICATIONS

■ STRUCTURE

RCC Framed Structure: Footing, Columns, Beams and Slabs in R.C.C. designed as per ISO standard.

■ SUPER STRUCTURE

Walls: First Class Brick work in Kcp , Ultratech 53 and 43 grade as per ISO standard cements using red brick

External: 9" Thick.

Internal: 4%" Thick

■ PLASTERING

Internal & External: 2 Coats of Cement mortar plastering with Sponge finish

■ WALL FINISHES

Exterior Walls: Weather proof reputed make Exterior Texture paint.

Quality wall care on soft surfaces as per elevation design.

Interior Walls: Luppam finish and Acrylic Emulsion Paint of Reputed make.

■ PAINTING

Internal: Walls and Ceiling-Water-Proof Putty Finish with Two Coats of Emulsion over a coat of primer.

External: Texture or putty Finish with two coats Exteriors Emulsion Paint over a coat of primer.

■ DOORS AND WINDOWS

Main Door: Teak wood/Designer frame with teak shutters, aesthetically designed with standard hardware.

Internal Doors: Fire rated Solid wood frame with flush shutters and standard fittings and locks

Windows: UPVC Window frames & louvers with 5mm thick clear/frosted glass and Mosquito Mesh.

■ FLOORING

Drawing & Dining: Large vitrified tiles of "800mmx800mm* good quality brand.

Kitchen: Anti skid Vitrified/ Ceramic tiles.

Kitchen Dado: Glazed Ceramic/Vitrified tile dado up to 2" 6" height above kitchen platform.

Kitchen Fixtures: Granite platform with reputed brand steel sink with bore water connection and provision for municipal water.

Utility: Anti-skid Vitrified/Ceramic tiles

Bathrooms: Anti skid Vitrified/Ceramic tiles/Cera company only not medium range.

Bathroom Dodo: Vitrified/Ceramic tile dado up to 7" height in all toilets

Staircase: Granite with good finishing.

Lift Lobby & Passage: Anti skid Vitrified tiles.

Balcony: Anti skid Vitrified tiles/Kota stone.

■ ELECTRICAL

Electrical DB: Main electrical Board and Main MCB Anchor or Equivalent Make

Lightning External: LED lighting in common areas & passages Lightning External

Electrical internal: suitable provision for cooking range chimney, refrigerator, power & lighting provision of geyser points in all bath rooms.

Electrical Fixtures: Modular switches & sockets of Anchor/Polycab or equivalent make, Concealed copper wiring.

Air Conditioning: Power outlets for air conditioners in Master Bedroom & children Bedroom & hall.

TV: Provision in Drawing Room

■ SANITARY

Sanitary Fittings: Hindware/Cera/Reputed make Fittings Single lever CP fittings/mber taps, wash basin, floor mounted WC

Water Proofing: Water proofing in all toilets, wash areas and Terrace

■ COMMON AREAS

Lift: 6 passenger lift of standard make-Kone and JOHNSON LIFTS.

Railings: SS/MS Railing/solid wall as per design.

Parking Area: Parking Area with chequered tiles/Kota stone as per design.

Compound Wall: Four sides compound wall of 5' height, MS Gates as per design.

Power Back Up: Power back up in common lighting in the corridors, parking and for lift, Internal Minium 5 Points.

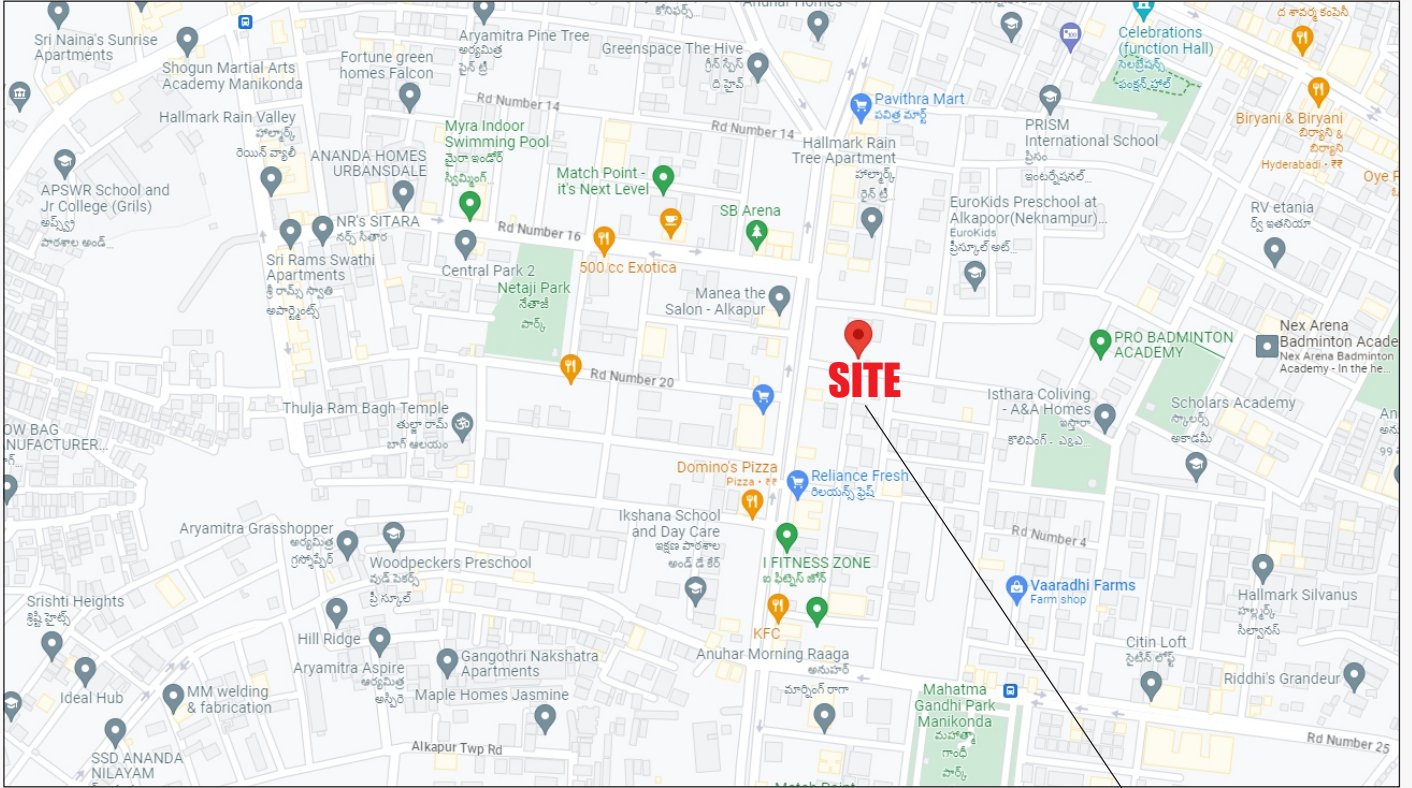
NOTE :

Anything other than specified will be done at extra cost, Registration, GST borne by the Purchaser.

Elevation shown in the brochure may be altered and colors may be change according to practical convenience.

LOCATION PLAN

(NOT TO SCALE)



Location Highlights :-

- ★ Near 2.5km to ORR
- ★ 7km Mind Space
- ★ 4.5km DPS School & Oakridge International
- ★ 5km care & Kims Hospitals
- ★ 22km to Airport



Location



BVR INFRA DEVELOPERS

Alkapoor Colony, Road No 10, Bangareddy, Hyderabad-500089.

