

PROJECT BY



SHYPRAM



E-Brochure

RERA REG. : PR/G/JAHMEDABAD/AHMEDABAD CITY/AUDA/MAA08761/130721 | [www.gujrera.gujarat.gov.in](http://www.gujrera.gujarat.gov.in)

Project # 1184103118

Every Creation is Inspired By Desire.

SHYPRAM  
*Sky*

3&  
31

bhk and  
commercial space

Welcome to sky living  
experience

# SHYPRAM





WONDERFUL  
AMENITIES FOR  
HEALTH

WELL EQUIP GYMNASIUM  
JOGGING TRACK  
YOGA SPACE





## EXCLUSIVE AMENITIES

CHECK OUT THE GROUND FLOOR PLAN  
TO SEE MORE CLASSY AMENITIES...



ENTRANCE GATE



ROOM BARRIER



SECURITY CABIN



DROP-OFF ZONE



TOWER ARRIVAL



TOWER FOYER  
WAITING AREA



GYMNASIUM



SKATING RINK



LIBRARY



INDOOR GAMES



FORMAL  
SIT-OUTS



MULTI-GAME  
COURT



SR. CITIZEN  
SIT-OUT



KIDS PLAY AREA



MOTHER'S  
SIT-OUT



BIRD FEEDER



PARTY LAWN



FUNCTION STAGE



CLUB HOUSE



YOGA SPACE



JOGGING TRACK



DOUBLE  
BASEMENT

SPARKLING SKY FOR  
SUCCESSFUL BUSINESS



SHOPS



OFFICES



GYM



BANK



CAFÉ



SHOW ROOMS



SUPER MARKET



ATM





# SHYPRAM Sky

3&4 bhk and  
commercial space

Welcome to SHYPRAM SKY  
A name synonymous to happiness.  
An address that enhances your  
views and connects you to conveniences.

# SHYPRAM Sky



Find the new definition of uniqueness and exception  
with a dream come true living space which has been designed  
for elite lifestyle and refined taste.

3&4 bhk and  
commercial space



# GROUND FLOOR PLAN



## AMENITIES

- 01 ENTRANCE GATE
- 02 SECURITY CABIN
- 03 PICK-UP ZONE
- 04 DROP-OFF ZONE
- 05 EXIT GATE
- 06 COMMERCIAL VISITOR'S PARKING
- 07 COMMERCIAL FINGER ENTRY
- 08 RESL. BASEMENT RAMP - IN
- 09 RESL. BASEMENT RAMP - OUT
- 10 TOWER ARRIVAL
- 11 TOWER ENTRY / WAITING LOUNGE
- 12 LETTER BOX SPACE
- 13 GYM
- 14 SKATING RINK
- 15 FORMAL SH. OUTH
- 16 LIBRARY
- 17 INDOOR GAMES
- 18 COMMON METER ROOM
- 19 RESIDENTIAL METER ROOM
- 20 COMMON SANITATION FACILITY
- 21 HOLLOW PLINTH PARKING
- 22 MULTI-GAME COURT
- 23 SR. CITIZEN SIT-OUT
- 24 KIDS-PLAY
- 25 MOTHER'S SIT-OUT
- 26 GOLF FIEDER
- 27 PARTY LAWN (400 PERSON)
- 28 FUNCTION STAGE
- 29 CLUB HOUSE
- 30 YOGA SPACE
- 31 PARTY UTILITY
- 32 SPACE FOR ELEC. SERVICES
- 33 JOGGING TRACK



18.00 MT WIDE ROAD

12.00 MT WIDE ROAD



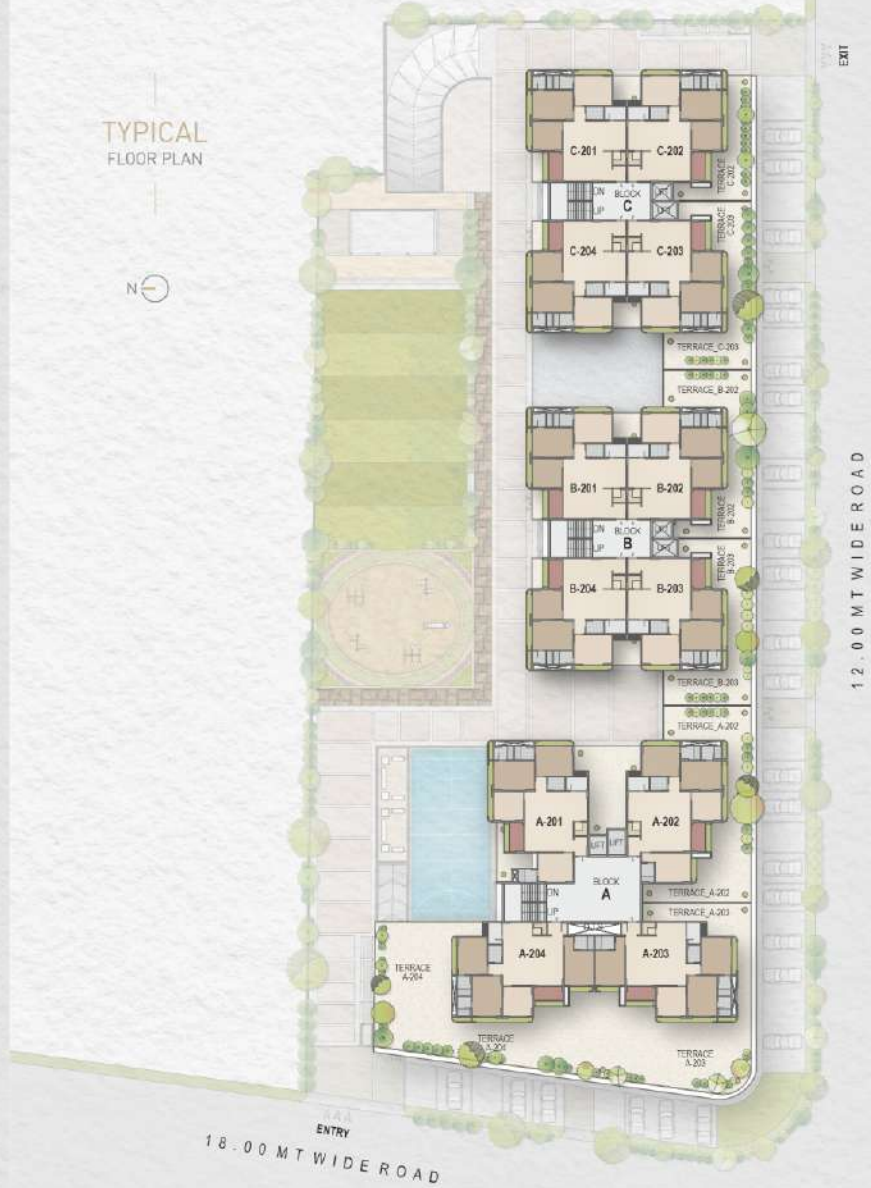
This is exactly how a Peaceful Night paradise looks like. Inspired by nature and your zest for life, being built with passion these residence create new benchmark in elite living.



# FIRST FLOOR SHOPS



# TYPICAL FLOOR PLAN



TOWER -A  
4BHK



TOWER -A  
4BHK



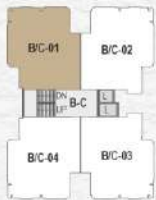
UNIT PLAN TYPE -A



UNIT PLAN TYPE -B



TOWER-B&C  
3BHK




SHYPRAM  
*Sky*




A spacious apartment with a spacious foyer  
that will upgrade your lifestyle and elite status and enhance your amenities.




**Structure**

 Earthquake resistant, RCC frame structure designed for seismic zone as per MCO norms.

**Wall Finish**

 Internal wall - smooth finish plaster with white exterior base putty  
External wall - polymer texture with premium acrylic paint


**Flooring**

 Premium quality digital-inked tile flooring in all rooms  
Premium quality tiles up to hotel level kitchen & all bathrooms


**Kitchen**

 Premium quality granite platform with Sink  
Stone shelves in store room  
Designer tiles across platform up to beam bottom level  
Water purifier point provision


**Doors**

 Main door with wooden framing  
Flush doors in external area with wooden framing  
Doors with high quality locking arrangements

**Windows**

 Premium quality heavy gauge anodized aluminum windows with grilles and for window  
Standard quality window frames.  
Large windows for better air ventilation.

**Plumbing And Sanitation**

 pressurized water supply in each unit.  
Premium quality sanitary ware and fittings in all toilet/hot water provision in all toilets.  
Concealed plumbing for hot/cold water lines  
Premium quality UPVC pipes for water supply and CPVC pipe for hot and cold water

**Electrical**

 3 phase concealed as copper wiring with modular switches & ELCB for maximum safety  
Sufficient Electric points in all rooms  
AVC points in all bedrooms, drawing & dining room  
TV points in drawing room & bedroom with DIN wiring  
Coyser points in all toilets

**Parking**

 Two level parking with allotted parking spaces  
LCCTV with screening & 31 days backup for 1<sup>st</sup> floor and parking area

**Fire Safety**

 Govt. approved fire safety system

 **Site**  
SHYPRAM SKY B/h. R.C. Technical College,  
Nr. I D Patel school, Ghatodiya, Ahmedabad-380061.

**Contact** - +91 79909 34616 | **Email** - shypramsky@gmail.com

**SHYPRAM**  
*Sky*

**Developer**  
Pramukh Nirman Assets LLP

**Architect**  
 IH ARCHITECTS

**Structure**  
Shreeji Structure



Scan For Location

**DISCLAIMER :**

• Any Amendments in Rules And Regulations by Government or Local Authority will be Bound To all Members. • To rent Power, A.M.C Stamp Duty, Legal Charges, G.S.T. & Any other Govt. Taxes and Miscellaneous Charges will be borne by Members • External & Internal changes shall not be allowed. Before possession Execution of sale deed is compulsory. • Developer reserve right of any changes in the scheme & it shall be bound to all members. • This brochure is only provide information for general information to the member & shall not form a part of any legal agreement. • It can be change without prior notice. • All the architectural and interior view in brochure are computer graphics simulated interpretation of the actual property. • Consider all dimension in per passing drawing. • This brochure including the virtual images, virtual furniture there is a just for an easy presentation of the project and should not be treated as a legal document. • Subject to Ahmedabad jurisdiction.