

Where
MAGIC Happens



MARATHE
TOWER



An Address so uniquely luxurious, it marks the new phase of Titwala where you Live like a Monteite

Think about everything that makes Titwala distinctive. The unmatched status, the pride it wears on its sleeve, the colonial charm, the destination of dreams.


However, there is a chasm between this paradise of perfection and the life you truly deserve.

A life that is now unfolding at a destination that marks the new phase of Titwala.

Welcome to Titwala, a singular address at Kalyan that brings you the best of Titwala old charisma with new promise.



AN ETERNAL LEGACY OF EXCELLENCE

- 
- ESTABLISH IN 1983 AS SAI JI BUILDERS
 - 35+ COMPLET PROJECT
 - 5+ RUNNING PROJECT
 - 10+UPCOMMING PROJECT
 - PRESENCE IN KALYAN L SHAHAD L TITWALA
 - TRUSTED BY 1000+ HAPPY CUSTOMERS



KALYAN, SHAHAD & TITWALA

ONGOING PROJECT





MARATHE
TOWER

TITWALA'S
ONGOING PROJECT
GROUND+ **31** STOREY
TITWALA'S FIRST
TALLEST TOWER



Actual View

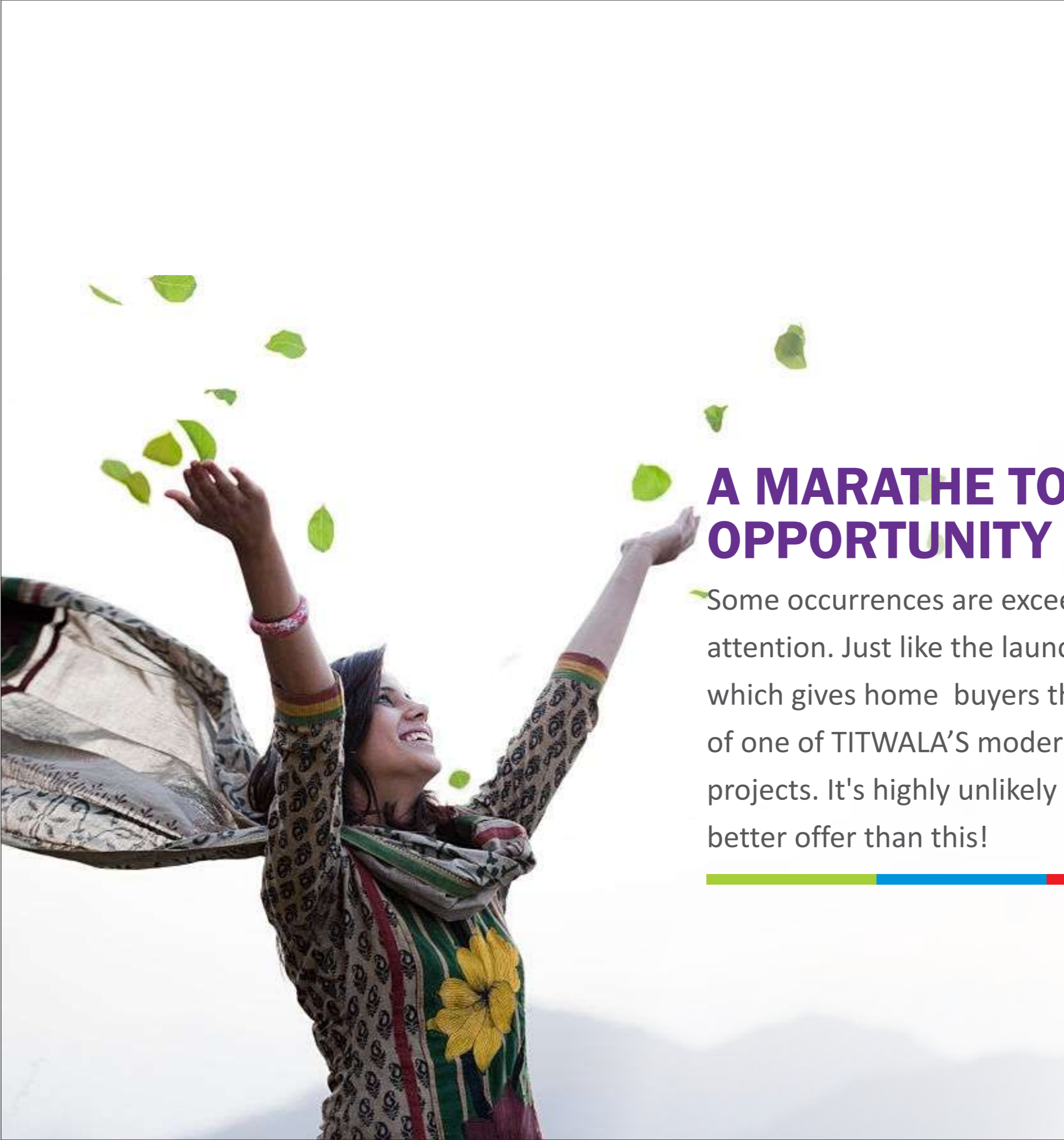


We Got It, What About You?



**MARATHE
TOWER**





A MARATHE TOWER OF AN OPPORTUNITY

Some occurrences are exceedingly rare and demand attention. Just like the launch of MARATHE TOWER, which gives home buyers the chance to claim a slice of one of TITWALA'S modern eye-catching residential projects. It's highly unlikely buyers will ever find a better offer than this!



YOUR DREAM NEIGHBOR HOOD

Ofcourse, no great residential project exists in isolation. At Marathe Tower, however, that proximity to social infrastructure is an added bonus, assuring residents of great quality and flexibility in all services that make up a modern urban life.





5 min

Digi 1 Store
IDBI Bank
Axix Bank
Shops & Market
Hardware Store

10 min

Ganesh Mandir
Ganpati Hospital
Ganraj Kaladalan
Shree Mall
Monginis

15 min

Goveli College
Hanuman Mandir
Usha Agencies
Datta Mandir
Railway Station



ALL ROADS LEAD TO UNICORN

The connectivity is unmatched like no other. Marathe Tower is located in the heart of thane, where going anywhere seems an effortless travel. Our residents are in close proximity of everything they want.



MARATHE CONSTRUCTION BENEFITS

PARTICULAR	MARATHE GROUP	CONVENTIONAL CONSTRUCTION
Construction speed	Reduces construction cycle by 50%	Takes twice as much time as Mivan construction
Seismic Resistance	More seismic resistance and durability of buildings	Lesser Seismic resistance and durability buildings
Maintenance Cost	Less seepage owing to absence of construction joints. Hence, low maintenance cost	More chances of seepage hence, more maintenance cost
Premium Finish	Ensures uniformity providing a smooth finish to reduce plastering cost	Increased plastering cost
Carpet Area	Thinner walls achievable increasing the carpet area	Carpet Area reduces due to thicker walls.





EVERYTHING YOU NEED IS RIGHT HERE

SPECIAL FEATURES

Decorative Building Entrance Lobby.

Clear 10ft Ceiling Height.

Elegant Looking Elevation.

Premium Complex.

Good Quality Lift.

Fire Fighting System.

Garden & Children Play Area.

Power Backup For Lift And Common Lighting.

Rainwater Harvesting.

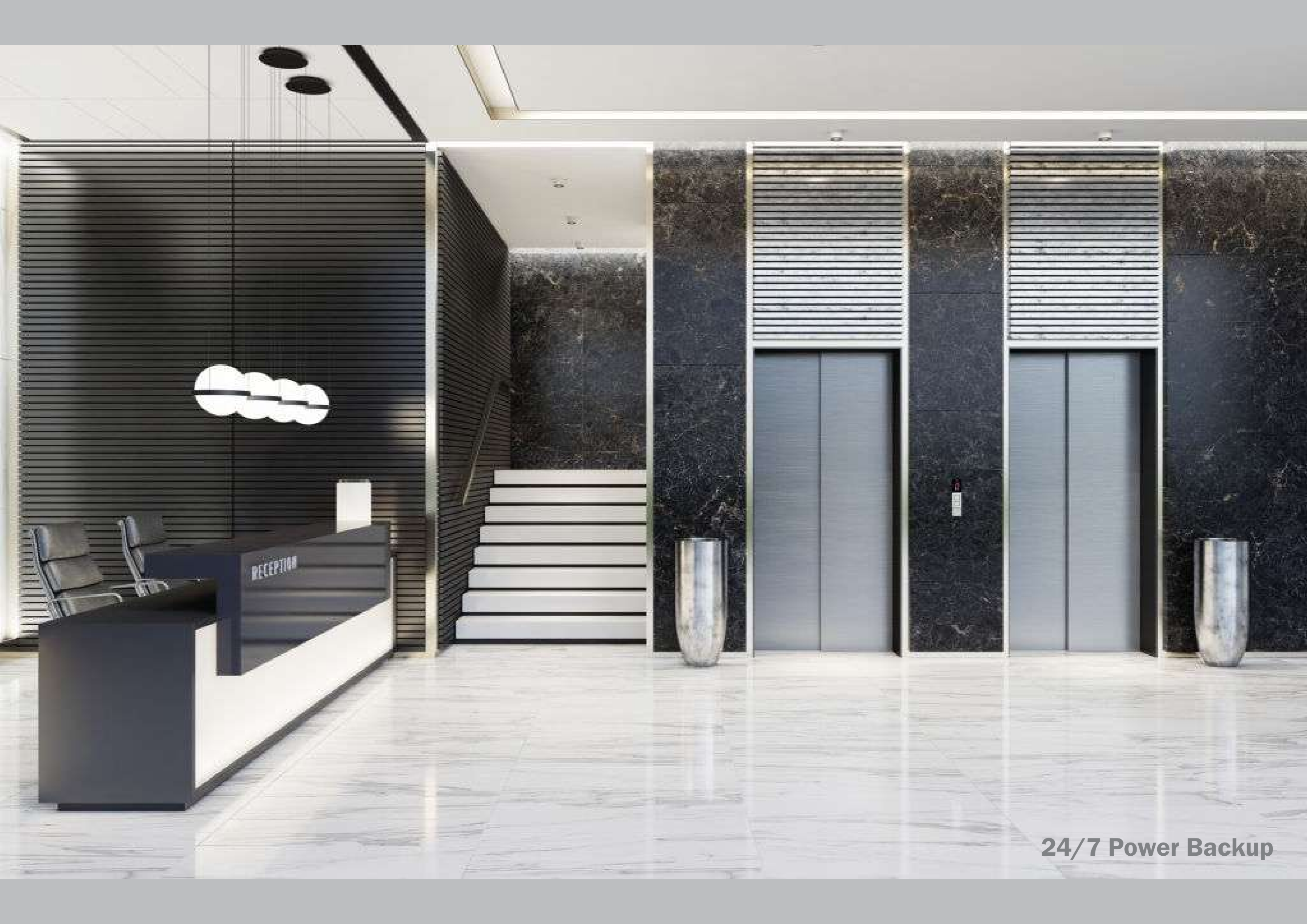
Lighting Arrester.

INTERNAL AMENITIES

- Windows : Anodized Aluminum French sliding windows and Louvers in WC & Bath.
- Doors : Main Door and internal Doors shall be with fancy locks & handles.
Water proof doors for WC and Bath rooms.
- Flooring : Good Quality tiles for flooring in entire flat, passage and antiskid tile in terrace.
- Kitchen : Granite platform with S.S. Sink and tiles up to door height on platform side.
- Toilets : Full height wall Tiles in WC and Bathroom, Tiled floors, Provision of Sintex connection to both WC , And also provide Geyser in Bathroom.
- Storage : Storage space above WC or Bath, Inverter space provision.
- Electrical : Concealed copper wiring with sufficient points for maximum utility .
- Points For: Cabling Telephone, Solar Energy System, Washing Machine, TV Cable, AC Point in one bed room only.



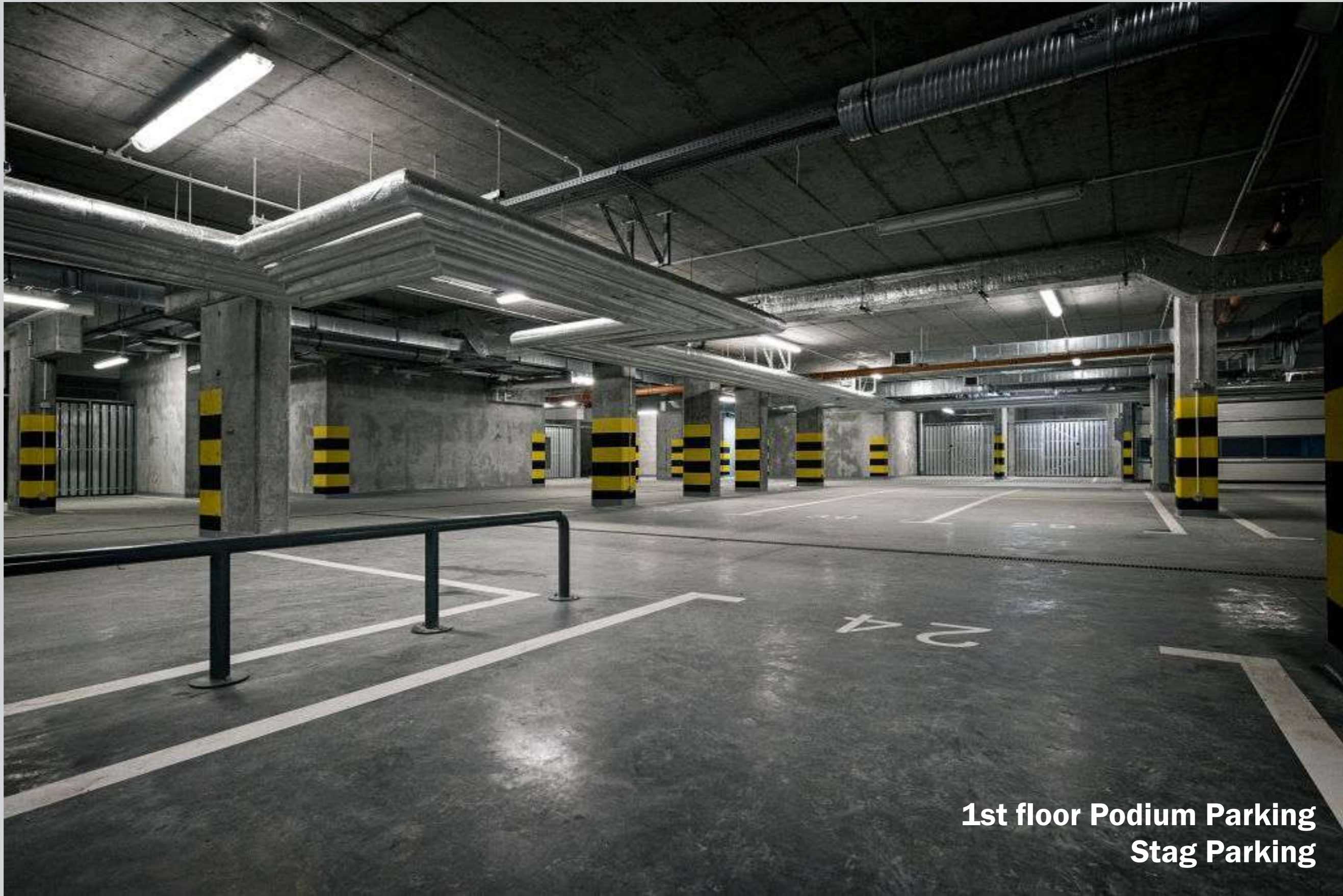




RECEPTION

24/7 Power Backup



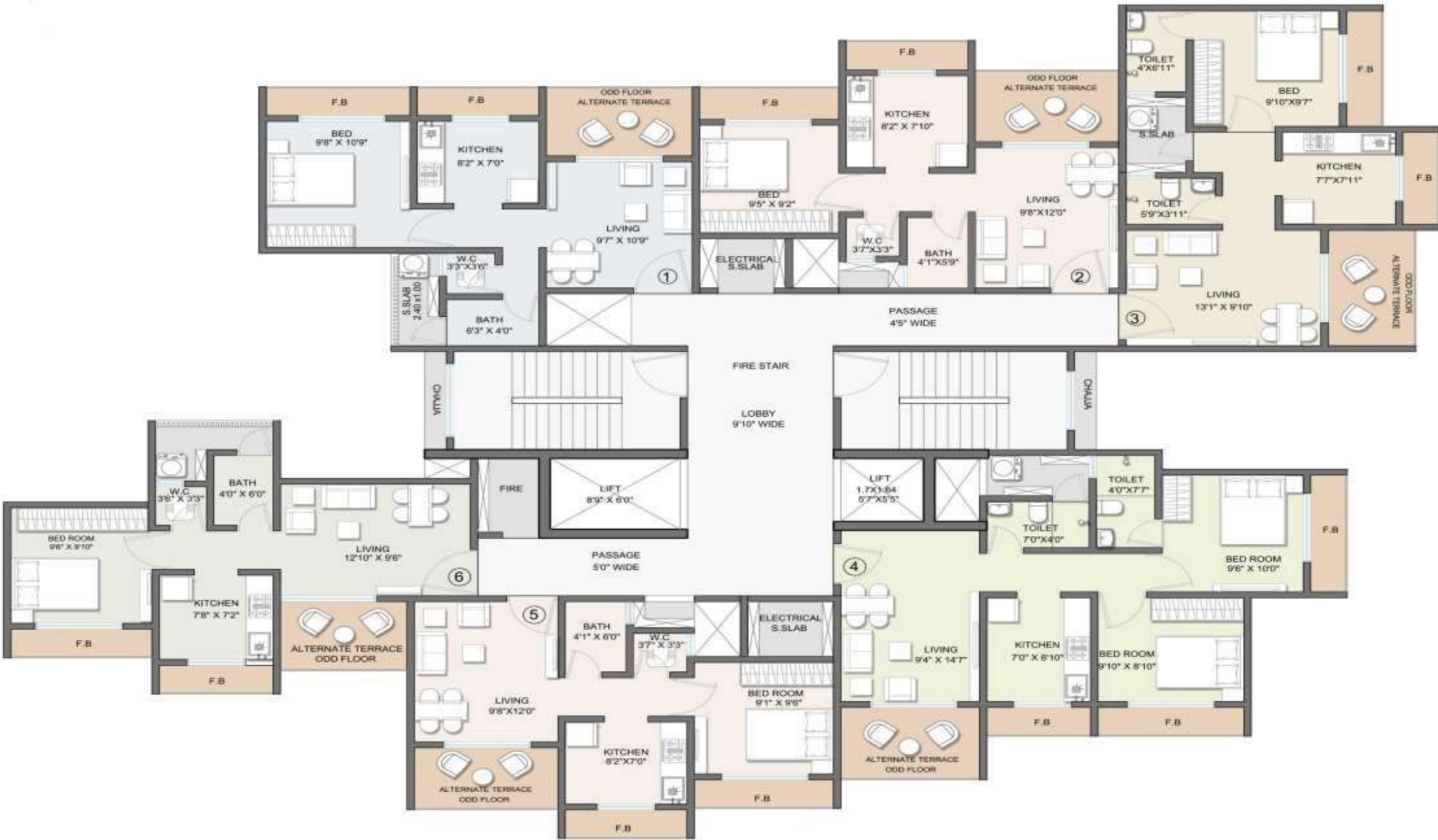


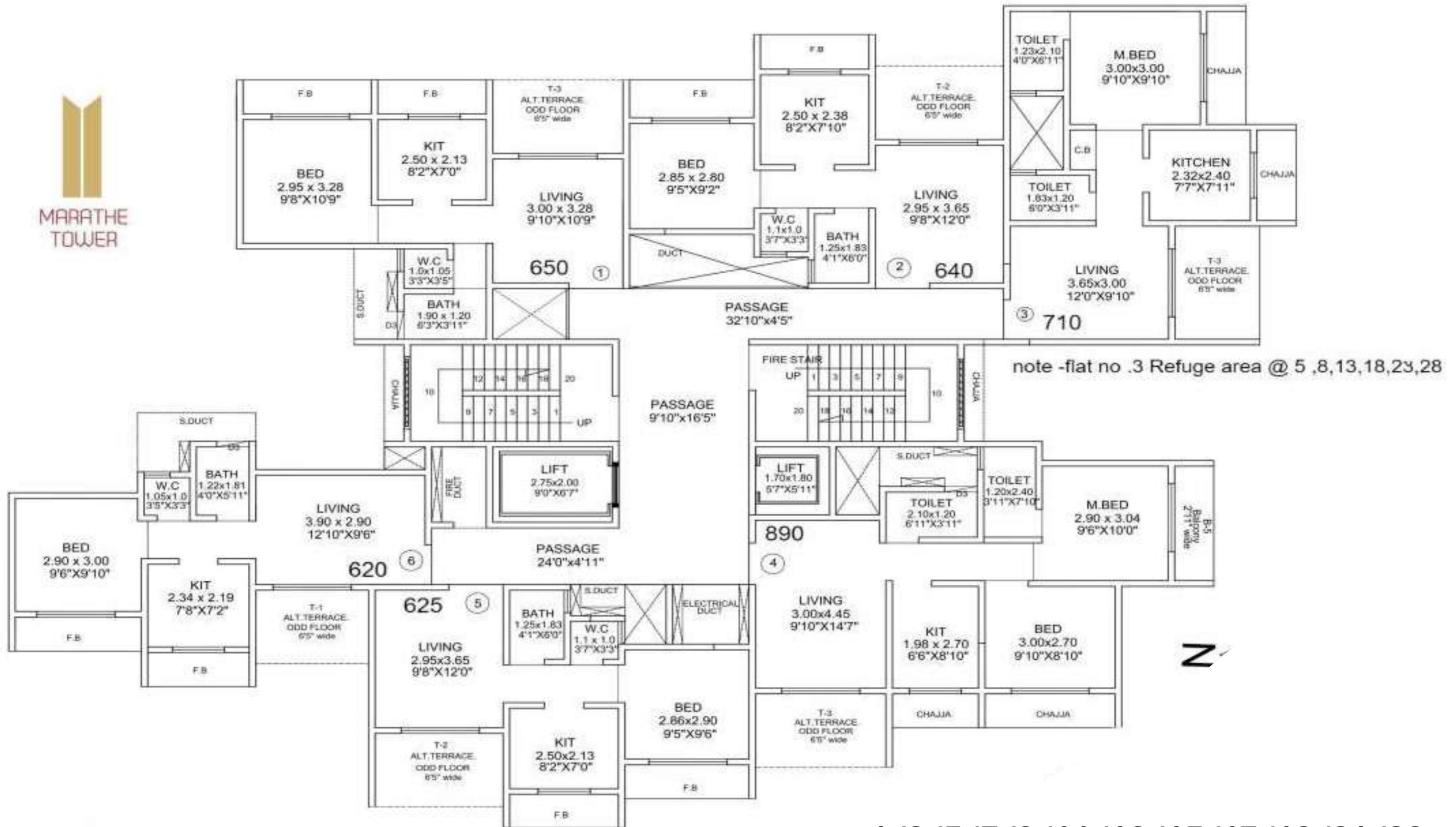
**1st floor Podium Parking
Stag Parking**

**WE MAKE YOUR RELAX CORNER
AT YOUR HOME**



MARATHE TOWER

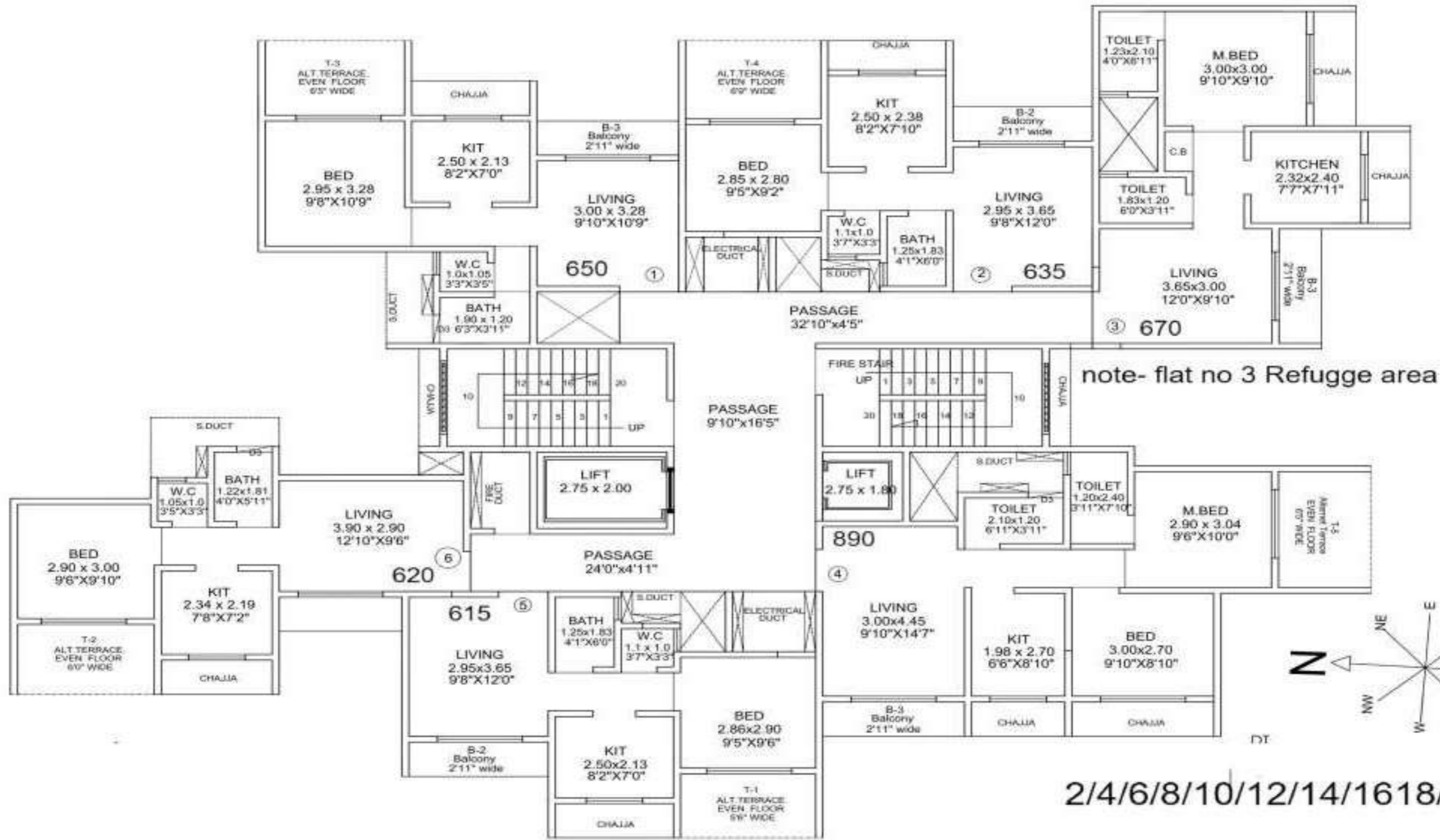




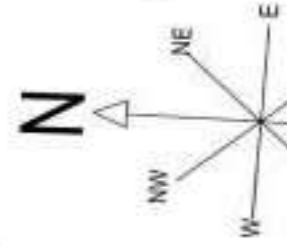
note -flat no .3 Refuge area @ 5 ,8,13,18,23,28



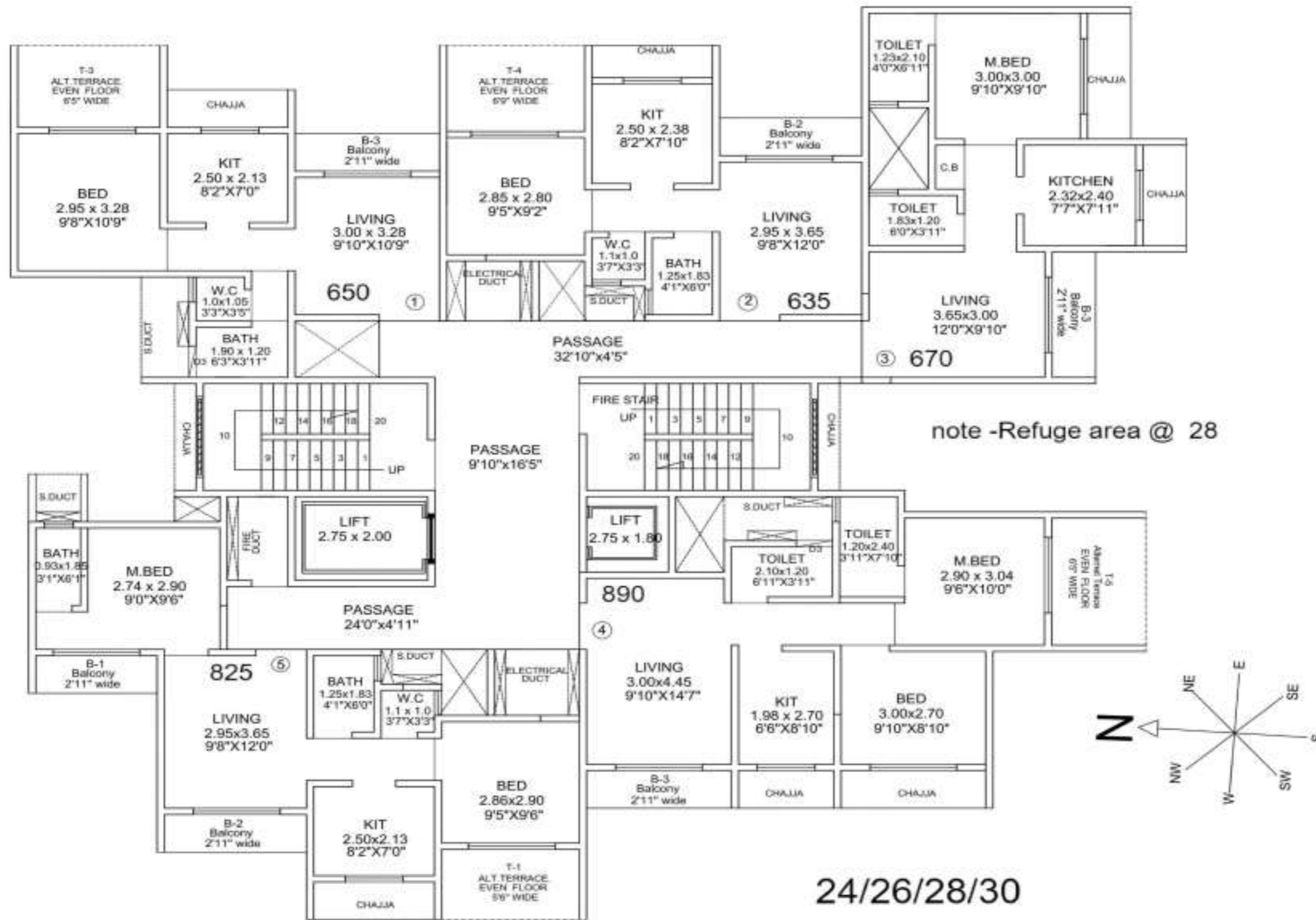
1/3/5/7/9/11/13/15/17/19/21/23

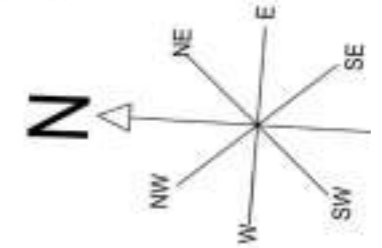
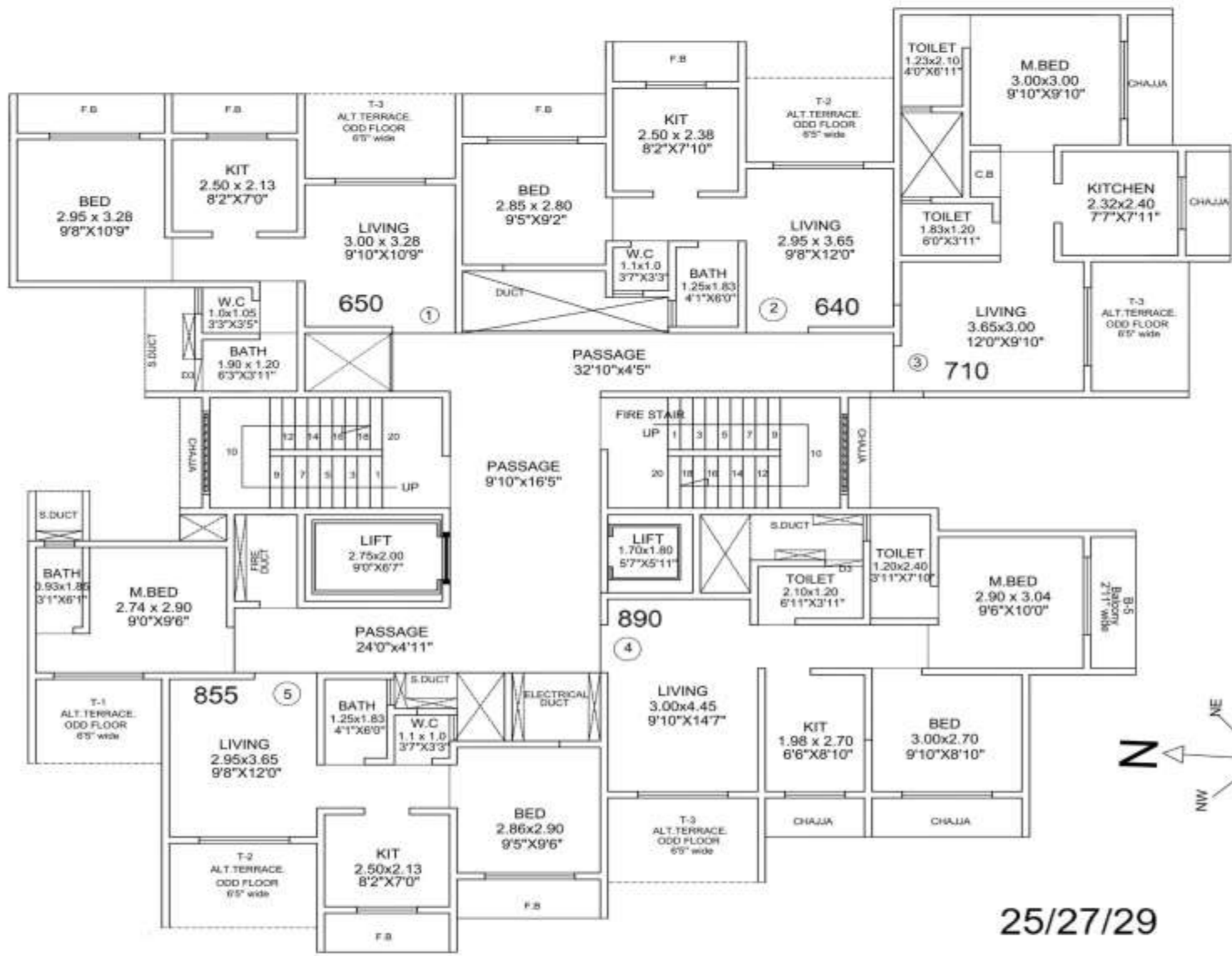


note- flat no 3 Refuge area



2/4/6/8/10/12/14/16/18/





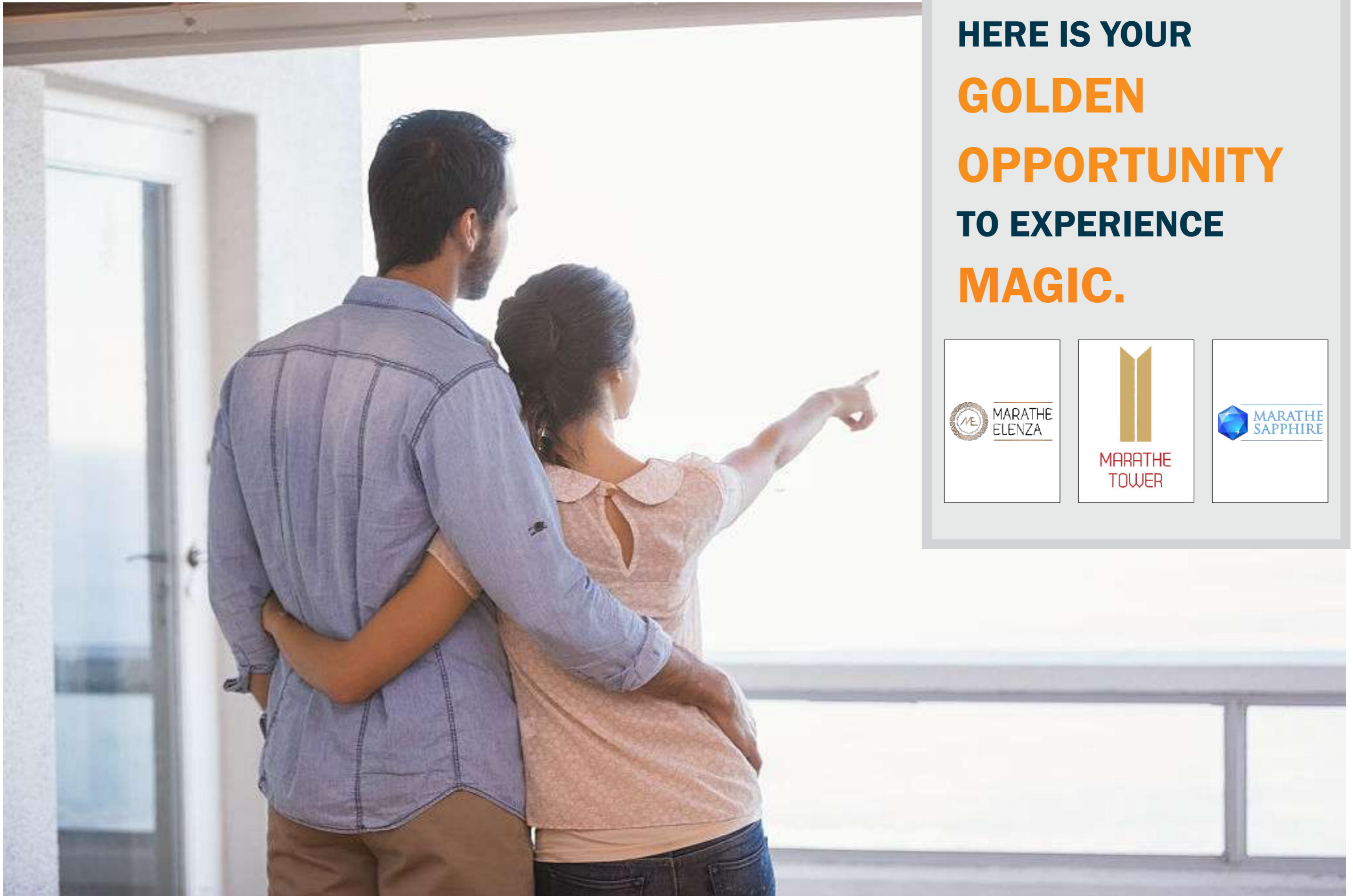
25/27/29

1BHK



2BHK





**HERE IS YOUR
GOLDEN
OPPORTUNITY
TO EXPERIENCE
MAGIC.**





MARATHE
ELENZA



MARATHE
SAPPHIRE



UPCOMING PROJECT
SWAMI VIVEKANAND CIRCLE, STATION ROAD, TITWALA (E)

ON GOING PROJECT
NEAR GANESH TIMBER MART, NEXT TO PATIDAR BHAVAN SHAHAD (WEST)





**MARATHE
GROUP**
Refining Luxury!!!

Sales Office: Marathe Tower, Next to Digi 1 Store, Station Road, Near Hari Om Valley, Titwala (E)

Corporate Office: Marathe Elenza, Ambivali Road, Near Shahad Station, Shahad (E)
Kalyan, Thane (W) 421301.

E-mail: sales@marathegroups.com | marathegroup@live.com | marathegroup1101@gmail.com | Website: www.marathegroups.com

For details call: +91 70458 71101 / 77388 31778

ARCHITECT: M/S VIJAY KUMAR PANDEY & ASSO

RCC CONSULTANT : FAKHRI HASSANWALA & ASSO.

LEGAL ADVISOR : A. P. TIWARI

Disclaimer: *Prices are inclusive of taxes but excluding possession charges and GST on possession charges. Image for representation purpose only.

#12month EMI holiday offer applicable only if loan disbursed through loan partner 'Bajay Housing Finance'. Standard terms & conditions apply.

MahaRERA Reg. No.: Marathe Tower - P51700032292 | Project details are available at website: <http://maharera.mahaonline.gov.in>