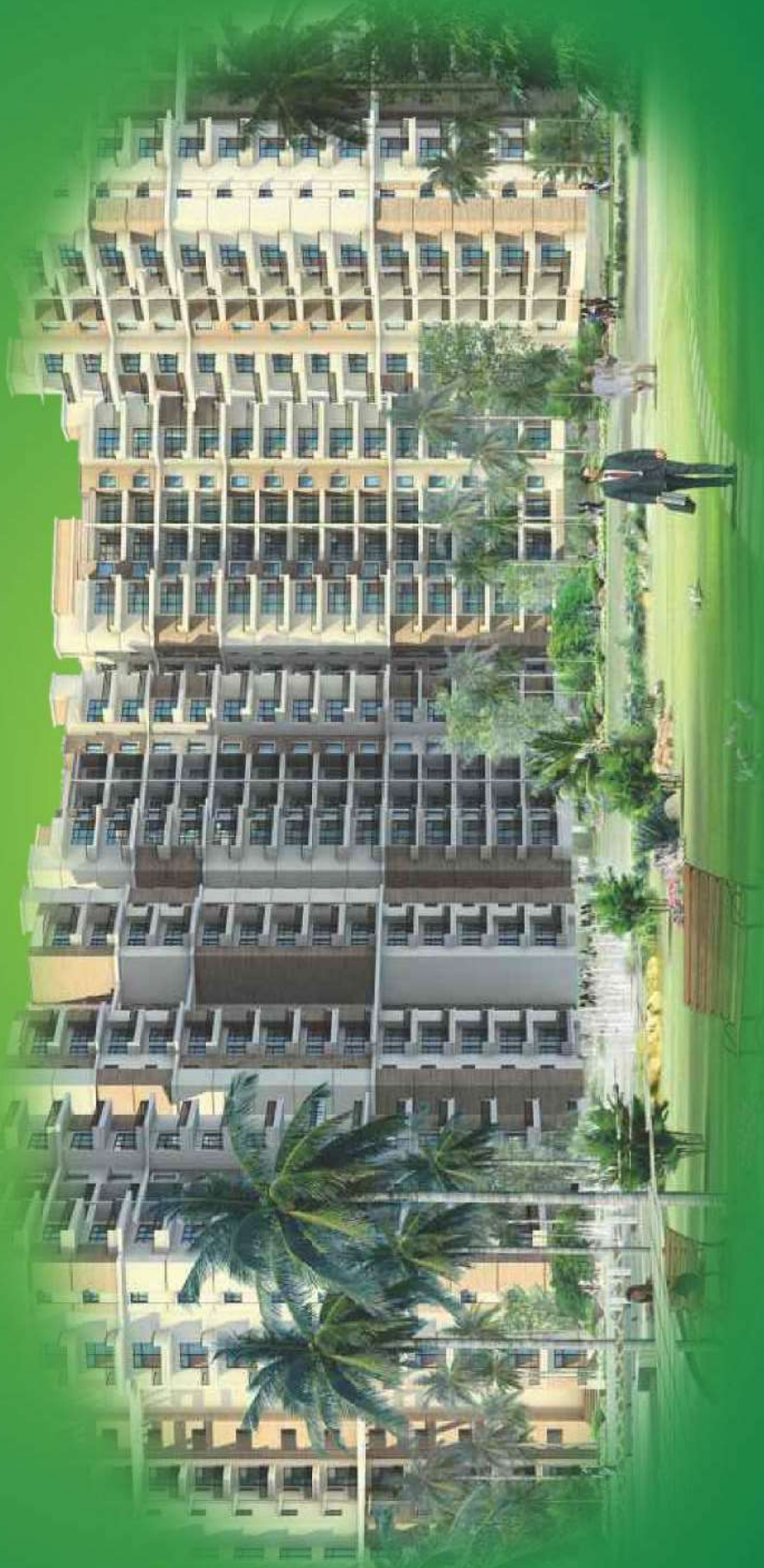


**MONA**  
GREENS

*Home of dream*



 “If your home could talk to you, what would it say?” 

*It's an amazing thing to see your dream home become a freshly painted, brightly decorated reality. We at Mona Portfolio Ltd. build homes that enhance your lives and embrace your family.*

We are a Group of Young, Enthusiastic, Focused and highly Motivated Professionals, having good hands of experience in the field of engineering, architecture, construction, marketing, finance and other management disciplines. MPL is raising the bar for building high performance, healthy, green homes and buildings. We pride ourselves in offering personal attention on all projects, no matter how big or small. Our chairman, Tejinder Pal Setia and MD, Warangan Kumar Ralhan have a breadth of experience ranging from commercial buildings, apartment blocks, residential developments and niche-market private houses. The entire team of MPL is committed to deliver quality at par with the best in the industry maintaining the most exacting standards and offering a complete peace of Mind & Luxurious lifestyle.

The company's passion of exceeding industry benchmarks is evident in its ability to redefine value engineering, project after project, reinforcing the best of conceptual innovation and cutting -edge construction technologies. Every project that bears MPL signature stands out from the rest, in terms of design aesthetics, global standards of construction and comparable with the very finest in the business. If you want high quality craftsmanship, a knowledgeable team of professionals with over 20 years of experience, and a relationship with your builder that you will cherish, then Mona Portfolio Ltd. is the builder for you.

**Our Priorities:** Customer Satisfaction, Quality Work & Timely Completion of projects.

*Now presenting our most prestigious dream project*



Developers:

**PALAMPUR TOWNSHIPS  
PVT. LTD.**





**MONA PARADISE**



**MAX HEIGHTS**



**METRO VIEW**

 Gateway to Paradise 





## *Home of Dreams*

Experience Luxury of a Lifetime. Housed within 4 delightfully 4-storey blocks are 200 beautiful units. The Mona Greens lying placidly on the majestic location at VIP road, Zirakpur flanked by the endless green stretches, has a charm very much of its own.

Each block is perfectly angled to for unblocked enjoyment of glorious sunrise and sunset over the horizon. Homeowners will love the plush, stylish apartments designed for heart-warming comfort and effortless elegance. Clean, functional and practical layouts maximize your scope of space for unbounded pleasure. Live it up in a home that embraces sophistication inside-out.

The world is truly at home, at MONA GREENS, an address that everyone recognizes.

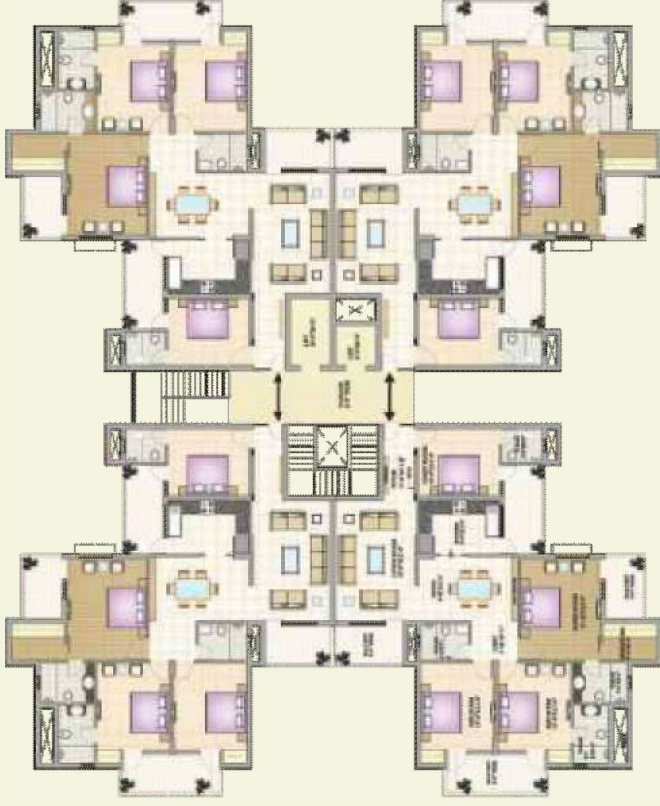




3 BHK Floor Plan



4 BHK Floor Plan



Layout Plan





## Proposed Specifications



**STRUCTURE:** Earthquake resistant R.C.C. framed structure as per latest IS codes. | **EXTERNAL FINISH:** Permanent Finish / Textured Paint.

LOCATION	FLOORS	DOORS & WINDOWS	FIXTURES & FITTINGS	WALLS
LIVING ROOM	Vitrified Tiles	Decorative panel door or masonite or equivalent make. Mortise locks of golden or equivalent make. All window & fittings shall be aluminum powder coated.	Copper wiring with modular switches. TV & Telephone points.	Oil bound distemper with pleasing shades over Birla White putty with POP Cornices
DINING ROOM	Vitrified Tiles	Decorative panel door or masonite or equivalent make. Mortise locks of golden or equivalent make. All window & fittings shall be aluminum powder coated.	Copper wiring with modular switches. TV & Telephone points.	Oil bound distemper with pleasing shades over Birla White putty with POP Cornices
BED ROOM	Vitrified Tiles	Decorative panel door or masonite or equivalent make. Mortise locks of golden or equivalent make. All window & fittings shall be aluminum powder coated.	Copper wiring with modular switches. TV & Telephone points.	Oil bound distemper with pleasing shades over Birla White putty with POP Cornices
MASTER BED ROOM	Wooden Flooring	Decorative panel door or masonite or equivalent make. Mortise locks of golden or equivalent make. All window & fittings shall be aluminum powder coated.	Copper wiring with modular switches. TV & Telephone points.	Oil bound distemper with pleasing shades over Birla White putty with POP Cornices
TOILET	Anti Skid Ceramic Tiles	Decorative panel door or masonite or equivalent make. Mortise locks of golden or equivalent make. All window & fittings shall be aluminum powder coated.	Parryware / Hindustan / Cera or equivalent make.	Glazed Ceramic Tiles
KITCHEN	Vitrified Tiles	Decorative panel door or masonite or equivalent make. Mortise locks of golden or equivalent make. All window & fittings shall be aluminum powder coated.	Counter in granite stone with stainless steel sink	Modular Kitchen and Galzed tile dado on wall upto 2ft. over counter
BALCONIES	Anti Skid Ceramic Tiles			

- Well designed complex with beautiful landscape garden • Adequate Power, Cable TV and Telephone points in all rooms • Maximum utilization of space



*4 BHK Floor Plan*

- 3 Bedrooms with attached toilets
- Drawing • Dining • Kitchen
- Balcony

**SUPER AREA: 2291.77 Sq.ft.**

*Typical Floor Plan*



**3 BHK Floor Plan**

3 Bedrooms with attached toilets  
 Drawing • Dining • Kitchen  
 • Balcony

**SUPER AREA: 1842 Sq.ft.**

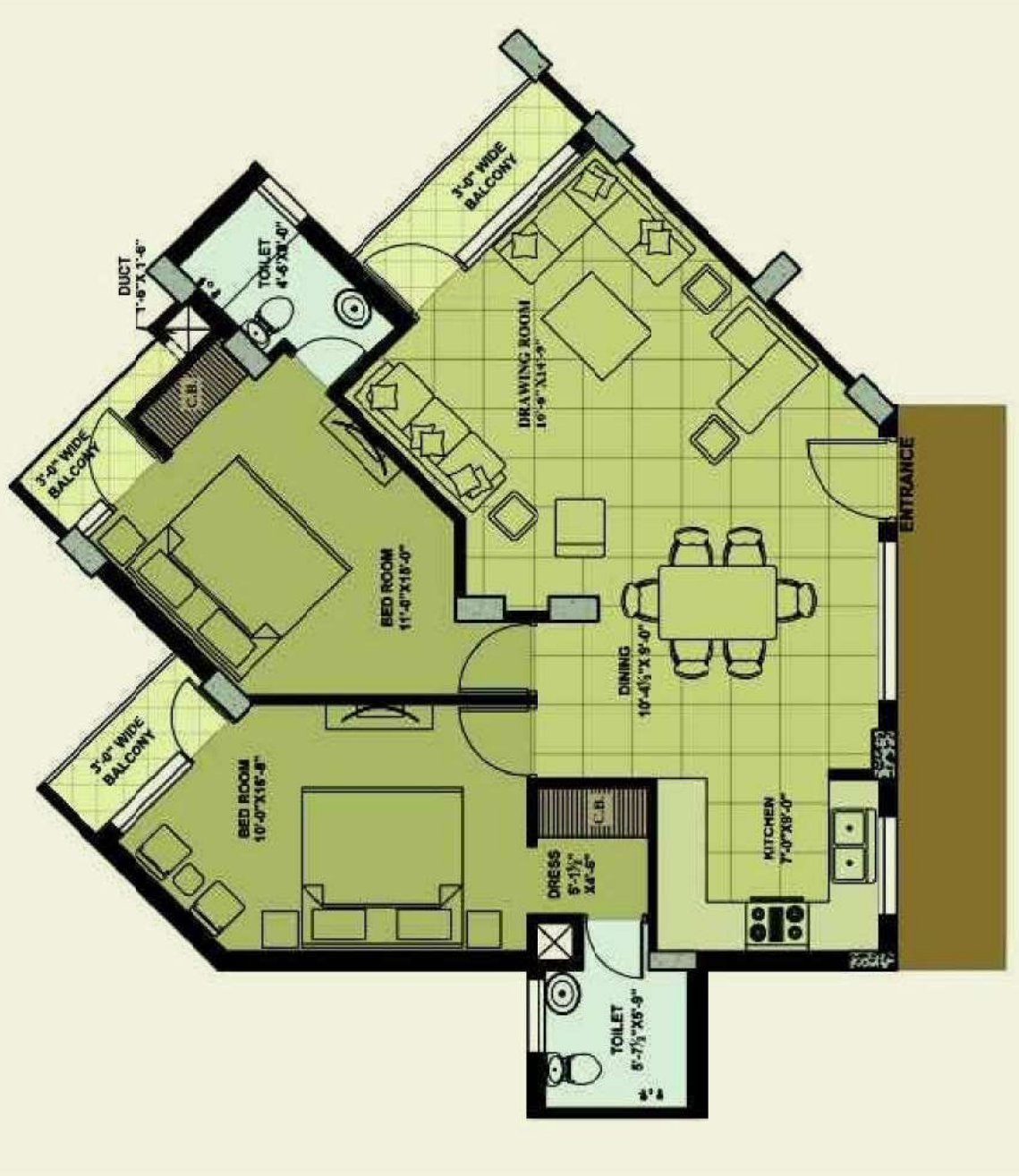


**TYPE - A1**

**2 BHK Floor Plan**

- 2 Bedrooms with attached toilets
- Drawing • Dining • Kitchen
- Balcony

**SUPER AREA: 1110 Sq.ft.**



**TYPE - A3**

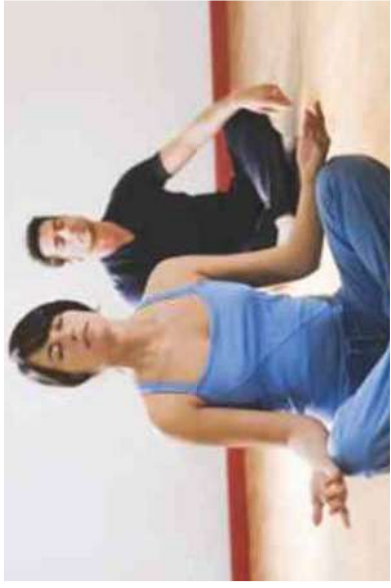
**2 BHK Floor Plan**

- 2 Bedrooms with attached toilets
- Drawing • Dining • Kitchen
- Balcony

**SUPER AREA: 1207 Sq.ft.**

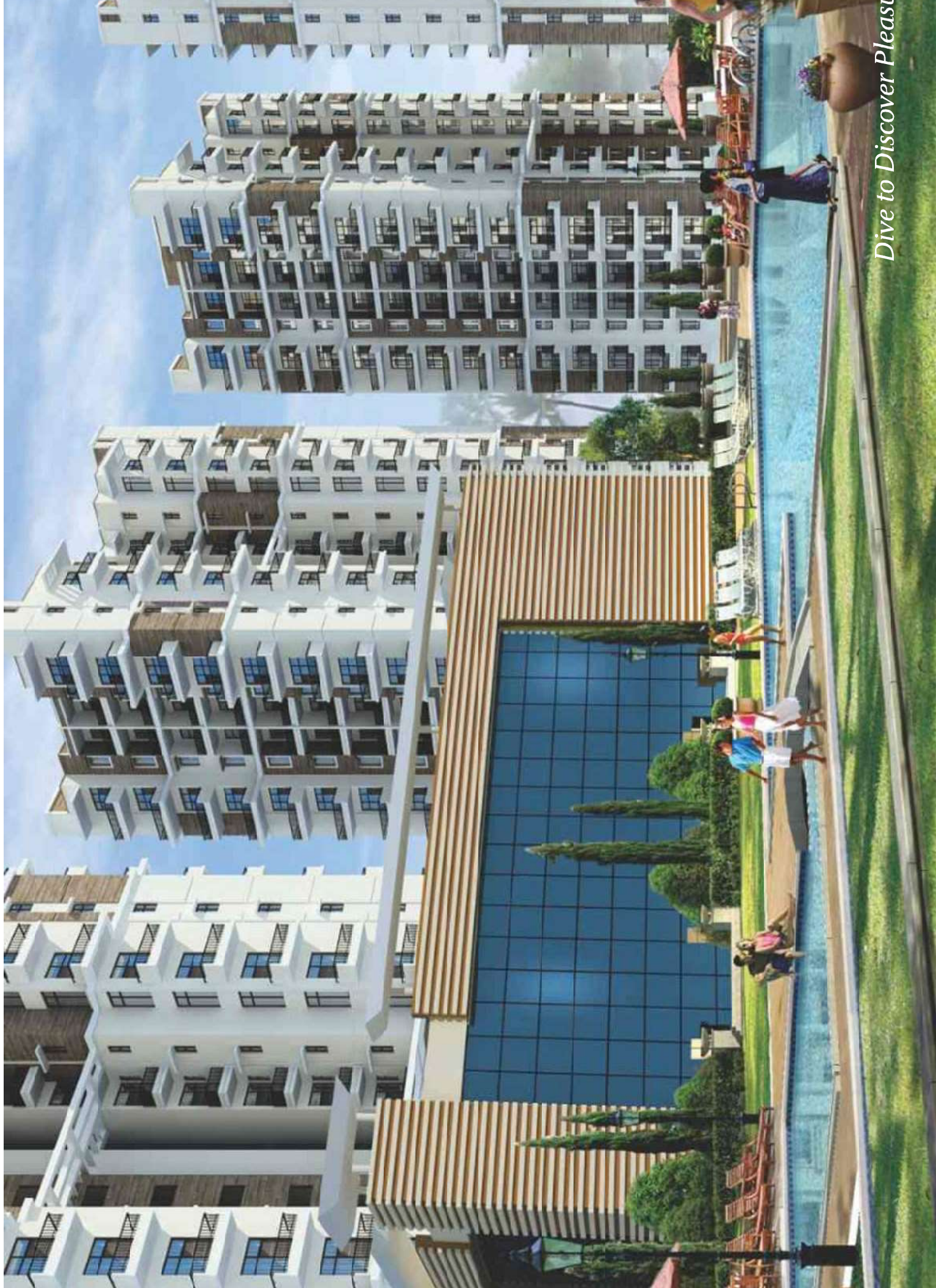
*Taste of Luxury Living for True Urbanites*

Be amongst the selected few to enjoy world class amenities at your doorstep. Immerse in the finer moments of life with a comprehensive range of facilities, work out to beat day's stress in the state-of-the-art gymnasium or take time to relish solitude in the pool. Enjoy steam, sauna and Jacuzzi facilities amongst the rest. Mona Greens is where exclusivity takes place.



- Vaastu and Eco friendly layout of the project approx 80% of the plot Area open to have a free flow of light and air to every corner of each flat.
- Well designed complex with beautiful landscape.
- Regulated entry with intercom connection from entrance gate to each apartment.
- 24 hours water / electrical supply.
- Power back-up for common functions.

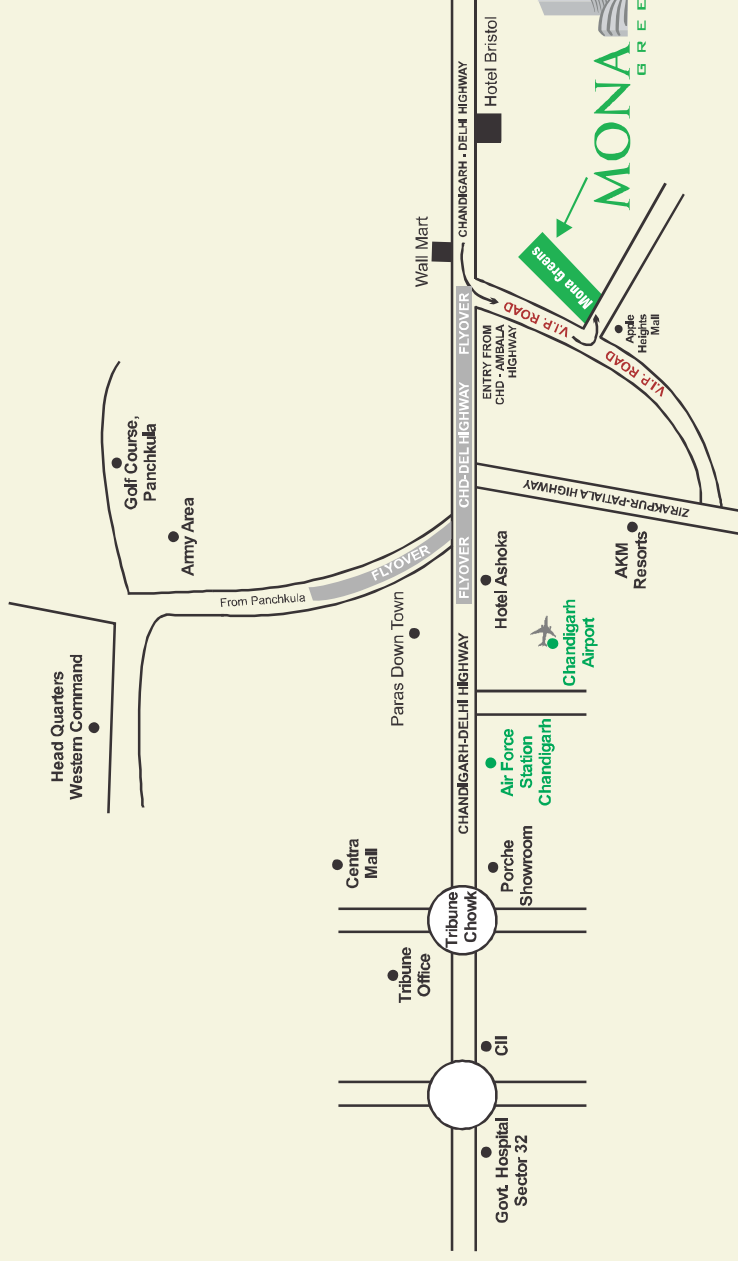
- CLUB HOUSE
- SWIMMING POOL
- GYM
- STEAM, SAUNA
- JACUZZI
- LAWN FOR COMMON FUNCTION



*Dive to Discover Pleasure*



*A View to behold*



*In the Vicinity*



AIRPORT-CHANDIGARH



CHHATBIR ZOO



SHOPPING MALL