



# हमने जब बनाया इतिहास बनाया!

गेट तो बहुतों ने बनाए, हमने गेटवे ऑफ इंडिया बनाया!  
ब्रिज तो कइयों ने बनाए, हमने दुनिया का लार्जस्ट रिवर ब्रिज बनाया!  
पब्लिक ट्रांसपोर्टेशन तो बहुतों ने बनाए, हमने दिल्ली मेट्रो बनाया!  
हमने जब भी बनाया, इतिहास बनाया...हम हैं Gammon India  
हम बना रहे हैं एक और इतिहास आपके शहर भोपाल में...



**GAMMON**

Builders to the Nation





★★★★★  
5 STAR HOTEL

ONE  
WORLD TRADE TOWER

MIDAS STREET  
HIGH-END STREET SHOP

THE ROYALE  
RESIDENCES-I

THE PALAIS  
ROYALE

SHOPPING MALL

QUEENS COURT  
SHOPPING ARCADE III

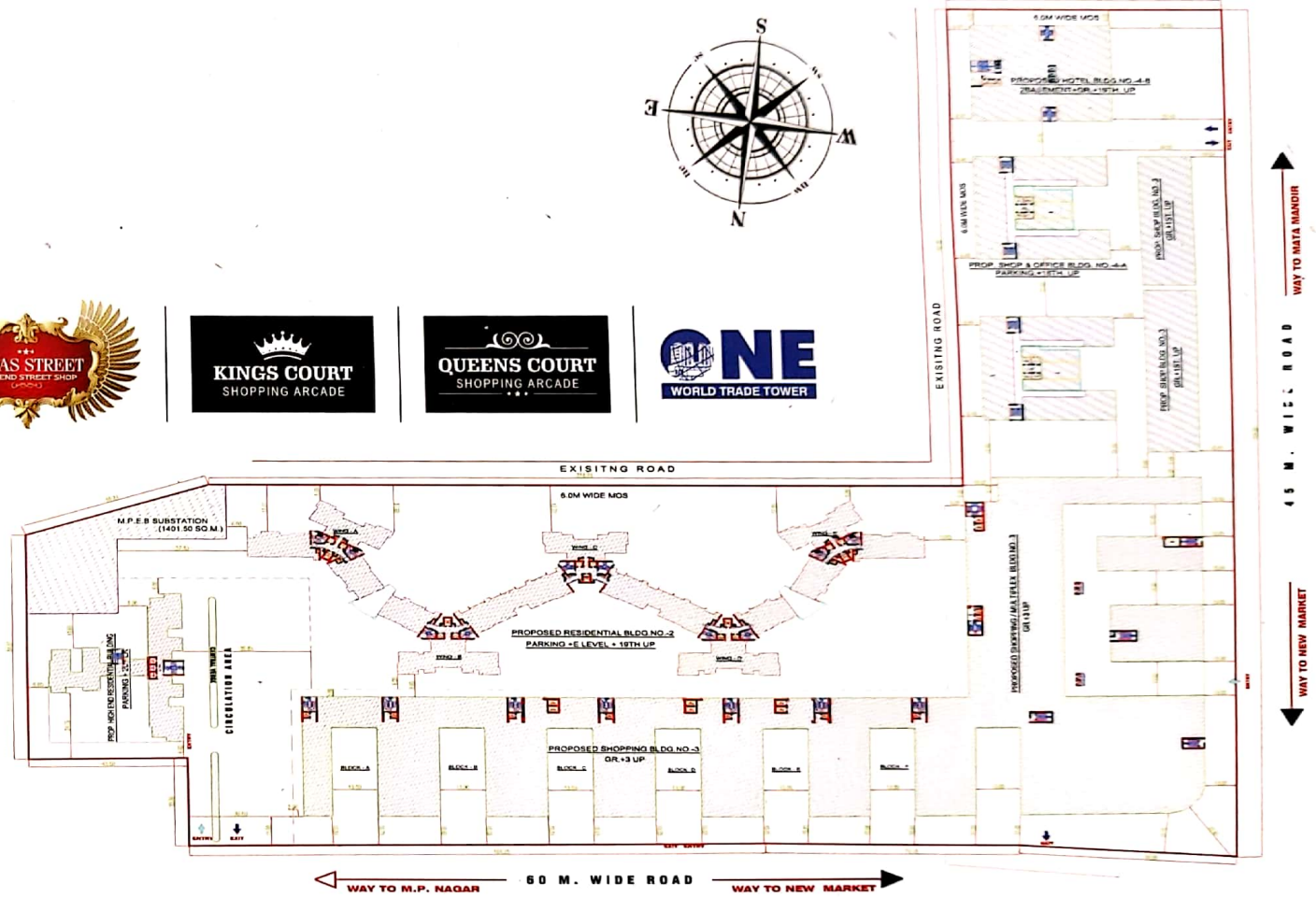
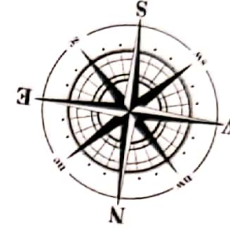
KINGS COURT  
SHOPPING ARCADE III

शुद्धि  
C.B.D.

LINK ROAD NO-1  
LINK ROAD NO-1



LAYOUT PLAN (Scale 1:500)





**GAMMON**

Builders to the Nation

**"WE BELIEVE  
IN GIVING BACK  
TO THE WORLD  
MORE THAN  
WE HAVE  
TAKEN FROM IT."**

**Abhijit Rajan**

Chairman and Managing Director, Gammon India Ltd.

**1920-1930 The Gateway of India**  
Mumbai, Maharashtra, India.  
First Precast driven piling in India  
Heritage Structure

**1931-1940 Sabarmati Power Station**  
Sabarmati Gujarat, India.  
First Natural Draught Cooling Tower

**1941-1950 Meerut Army Garages**  
Meerut, Uttar Pradesh, India.  
First Pre-stressed Concrete Shell  
Roof in the world

**1951-1960 Ball Tank,**  
Cirus Nuclear Reactor Mumbai,  
Maharashtra, India. First Pre-stressed  
Concrete Spherical Water Tower

**1971-1980 Tripoli West Thermal**  
Power Station- Civil Works Tripoli,  
Libya, Africa. The First Export  
Thermal power Contract by India

**1981-1990 Akkar Bridge,**  
Akkar, Sikkim, India.  
First Cable-Stayed Bridge in India

**1991-2000 Ranganadi Dam &  
Tunnel Arunachal Pradesh, India.**  
68m high concrete Gravity Dam and  
6km of Tunnels

**1991-2000 Nepal Bridges, Nepal.**  
21 Bridges across Nepal

**1991-2000 Karbude Tunnel**  
Ratangiri, Maharashtra, India.  
Longest Railway Tunnel in Asia

**2000-2010 Urban Flyovers**  
In Delhi, Mumbai, Chennai,  
Bengaluru, Hyderabad, India.

**2000-2010 Bihar Road Project, Gaya,**  
Aurangabad Section, India.  
60km long

**2000-2010 Chennai Water Pipeline**  
Chennai, Tamil Nadu, India.  
110km Long Large Diameter  
Water Pipeline

**2000-2010 Ultra Mega Power Project**  
Mundra, Gujarat, India. Chimneys for  
India's First such project

**2000-2010 Dahej-Uran Gas Pipeline**  
Maharashtra & Gujarat, India.  
230km Long Gas Pipeline Through  
Difficult Terrain

**2000-2010 Vadape-Gondhe Road**  
Project Igatpuri, Nasik,  
Maharashtra, India.  
100km long road

**2000-2010 Parbati Hydro Electric -**  
Stage II Kulu Valley, Himachal Pradesh,  
India. Surface Power House First  
Inclined Pressure Shaft in the world

**2000-2010 Rajamundhary Dharmavaram**  
Road Project Andhra Pradesh, India.  
57km long

**2000-2010 Sohar water Supply Project**  
Sohar, Oman. 200km of Pipeline  
13 reservoirs Electro-Mechanical  
Works & In-House Design

**2000-2010 Health Care**  
Tower Nakheel Dubai, UAE

**2000-2010 Godavari Bridge**  
Rajamundhary, Andhra Pradesh, India.  
Twin Bridge 4km long

**2000-2010 Fast Breed Reactor Project**  
Kalpakkam, Tamil Nadu, India. The  
First Fast Breed Indigenous Reactor

**2000-2010 Elevated Viaduct**  
and Station Buildings Delhi, India  
Delhi Metro Railway Corporation

**2000-2010 Mumbai Offshore Container**  
Terminal For Mumbai Port Trust  
Mumbai, Maharashtra, India. The First  
Offshore Container Terminal in India

**2000-2010 Information**  
Technology Park Bengaluru,  
Karnataka, India

**2000-2010 Jumeirah Lake**  
Tower Project, Dubai-UAE  
Multi-Level Underground car Park

**2000-2010 Teesta Hydro Electric**  
Project Stage V Teesta, State, India  
9m diameter, 13.5km Long Water  
Conductor Tunnel

**2000-2010 Entered the business of**  
transmission Tower & lines for  
high-voltage electric power

**& NOW IN BHOPAL**



**GAMMON BRIDGES CONTINENTS & CULTURES ACROSS THE WORLD**

Italy • Albania • Algeria • Libya • Iraq • Afghanistan • United Arab Emirates • Nepal • Bhutan • Oman • India • Bangladesh • Sierra Leone • Ghana • Kenya • Tanzania • Mozambique • Ecuador • Botswana & many more...



## THE BUILDERS OF HISTORY

Gammon India - the name that India knows as the makers of The Gateway of India, India's first cable-stayed bridge, Asia's longest railway tunnel, India's first second generation nuclear reactor, Delhi Metro, and many many more national and international civil engineering landmarks.

Having Gateway of India, built way back in 1919, as its maiden project to boast of, Gammon India is now amongst the largest physical infrastructure construction companies in India. Headquartered in Mumbai, Gammon's track record spans significant landmark projects built over several decades, with a prominent presence across all sectors of civil engineering, design and construction. Today, it's at the forefront of India's foray into infrastructure development across the globe.

With the proud legacy of over 90 years of creating marvels of civil engineering in India and abroad, Gammon India has now embarked upon a large scale commercial-cum-residential project in Bhopal called Srishti CBD.

The Government of Madhya Pradesh has awarded this most ambitious project of the State Capital Bhopal to Gammon India which is to develop an area of around 3-million Sq ft consisting super-luxurious residential apartments, international standard shopping arcade, high-street shopping centre, commercial offices and a five-star hotel.



## SHRISHTI CBD - THE REAL ESTATE MARVEL

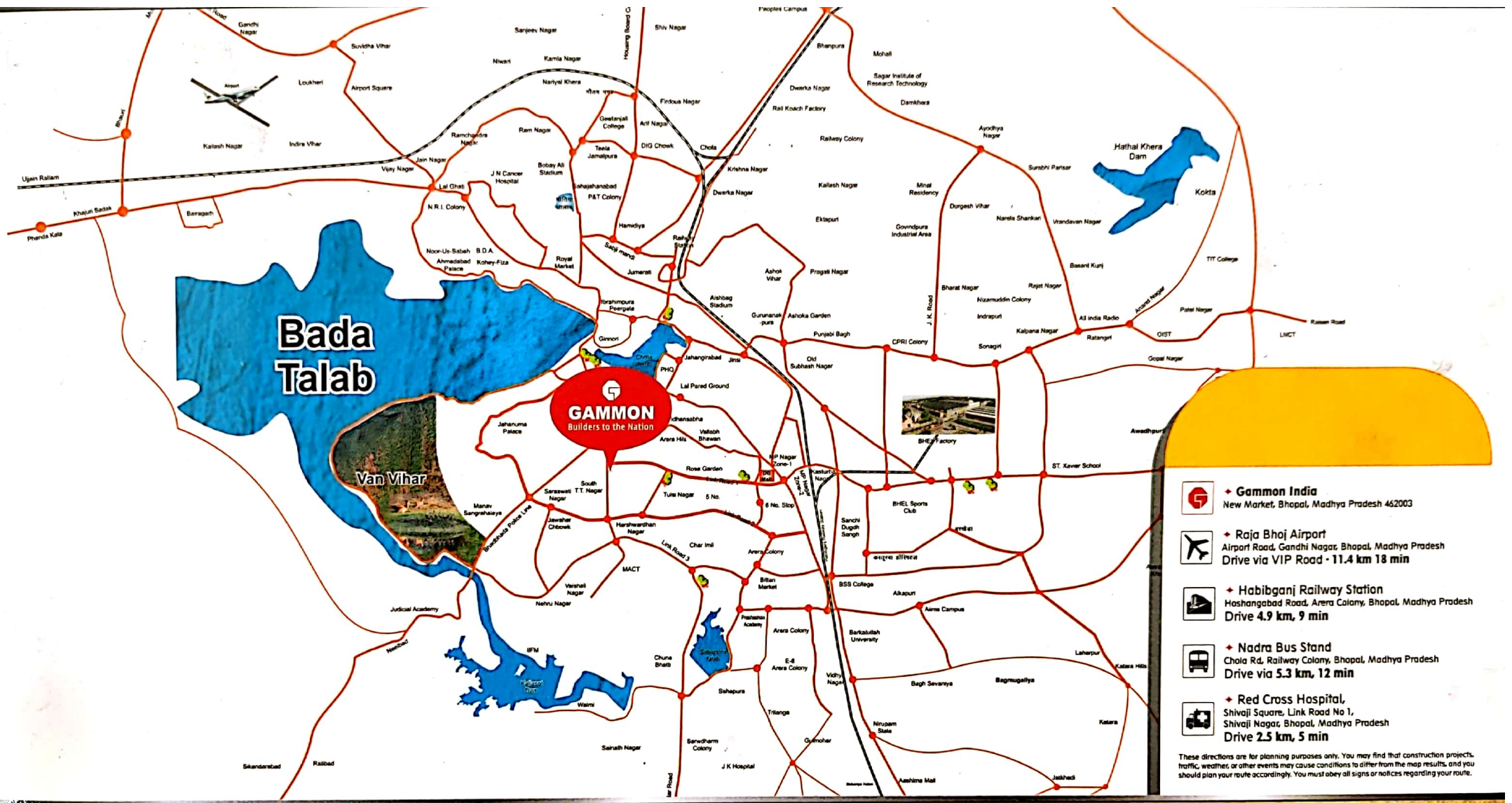
So lavish that it took 15 acres, 22 floors, 9 towers and one giant group to make it happen. Bhopal, 'The City Of Lakes', is known for its immense natural, historical and architectural beauty. Amidst this glorious beauty, SPV- a collaboration of Gammon India Ltd, with Sony Mony Developers Pvt. Ltd.- brings to you 'Srishti C.B.D.,' a splendidly luxurious township spread across 15 acres in the centre of the Bhopal city.

This mammoth project comprises of

- Royal Residences – The 22 storied 5 deluxe residential towers, tallest in MP
- Palais Royale – The Premium Tower with 66 Sky villas
- 288 Premium Apartments
- 20 Penthouses
- Kings & Queens Court - 349 Grand Retail Shops
- ONE - World Trade Tower - 520 Offices
- Midas Street - 18 Exclusive High-End Shops
- Multiplexes
- Supermarkets
- Ample Parking Capacity
- Bhopal's First ★★★★★ Five Star Hotel

### Not Local, Not Regional or National ...It's an International Experience

Backed with the international glory, globally acclaimed planning and designing, world-class construction and finishing and a promise of international standard comforts and luxuries for a global citizen of today - Srishti CBD has brought an International way of life here.



-  + **Gammon India**  
New Market, Bhopal, Madhya Pradesh 462003
  -  + **Raja Bhoj Airport**  
Airport Road, Gandhi Nagar, Bhopal, Madhya Pradesh  
Drive via VIP Road - 11.4 km 18 min
  -  + **Habibganj Railway Station**  
Hoshangabad Road, Aera Colony, Bhopal, Madhya Pradesh  
Drive 4.9 km, 9 min
  -  + **Nadra Bus Stand**  
Chola Rd, Railway Colony, Bhopal, Madhya Pradesh  
Drive via 5.3 km, 12 min
  -  + **Red Cross Hospital,**  
Shivaji Square, Link Road No 1,  
Shivaji Nagar, Bhopal, Madhya Pradesh  
Drive 2.5 km, 5 min
- These directions are for planning purposes only. You may find that construction projects, traffic, weather, or other events may cause conditions to differ from the map results, and you should plan your route accordingly. You must obey all signs or notices regarding your route.

  
**GAMMON**  
Builders to the Nation

  
C.B.D.  
  
SONY MONEY  
DEVELOPERS  
A Joint Venture of Gammon India  
with Sony Money Developers

Site Office : South T.T. Nagar,  
Gammon Square, Bhopal. Pin - 462 003  
Call : + 91 755 2570 363, 2570 313,  
M: +91 90390 68009  
Email : cbd@shrishfi.co  
www.shrshfi.co www.gammonindia.com



 <https://www.facebook.com/shrshfi.bhopal>  
 <http://www.youtube.com/ShrshfiCBD>  
 [https://twitter.com/shrshfi\\_CBD](https://twitter.com/shrshfi_CBD)

\*Terms & Conditions Apply. Disclaimer : This brochure is purely conceptual and not a legal offering. The developers/architects reserve the right to amend any details/specifications/elevations/amenities/facilities of their discretion. All perspectives and specifications are indicative and are subject to change. Architectural features may differ in different components of the Project. Specifications are tentative and are subject to change at the discretion of the developers/architects. All images are artist's impressions and are not fully representative. Brand names appearing in the paper insert are for artwork purposes only. Desamola Infrastructure reserves right to change/drop/amend any specifications/ amenities/ structure/ brand/ sizes without any prior information to any of the customer & others. All rights are reserved with Desamola Infrastructure & no liability otherwise claims would be entertained on any details exhibited in this brochure. All jurisdiction subject to mumbai court.

# PRIME RETAIL DESTINATION

Unraveled Capital Appreciation



Projects by **GAMMON**

Actual Photograph of Kings Court & Queens Court



**An imperial Commercial Experience** What does any national or international brand look in a retail space before opening its new outlet? The answers is – a commercially promising city, a great location, the best design of shop-space, good customer-base and an assurance of a flourishing business...or just say the commercial spaces exactly like Kings Court and Queens Court of Shrishti CBD.

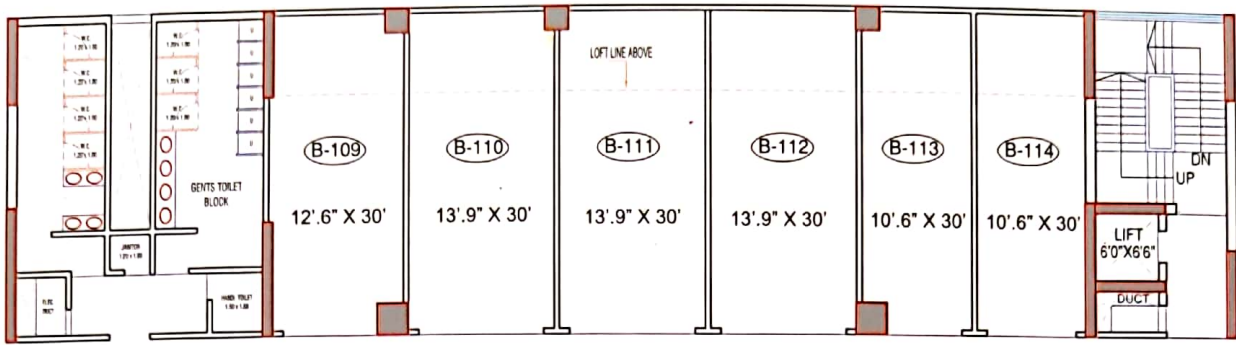
### KINGS COURT & QUEENS COURT ZONING

- Kings Court - 3**
- Electronic • IT • Computer • Mobile • Travel • Forex
  - Home Furnishing / Décor / Wallpapers / Tiles / Flooring / Hardware
  - Handcrafts • Gifts • Hardware • Music • Color Lab • Health • Gym Equipment

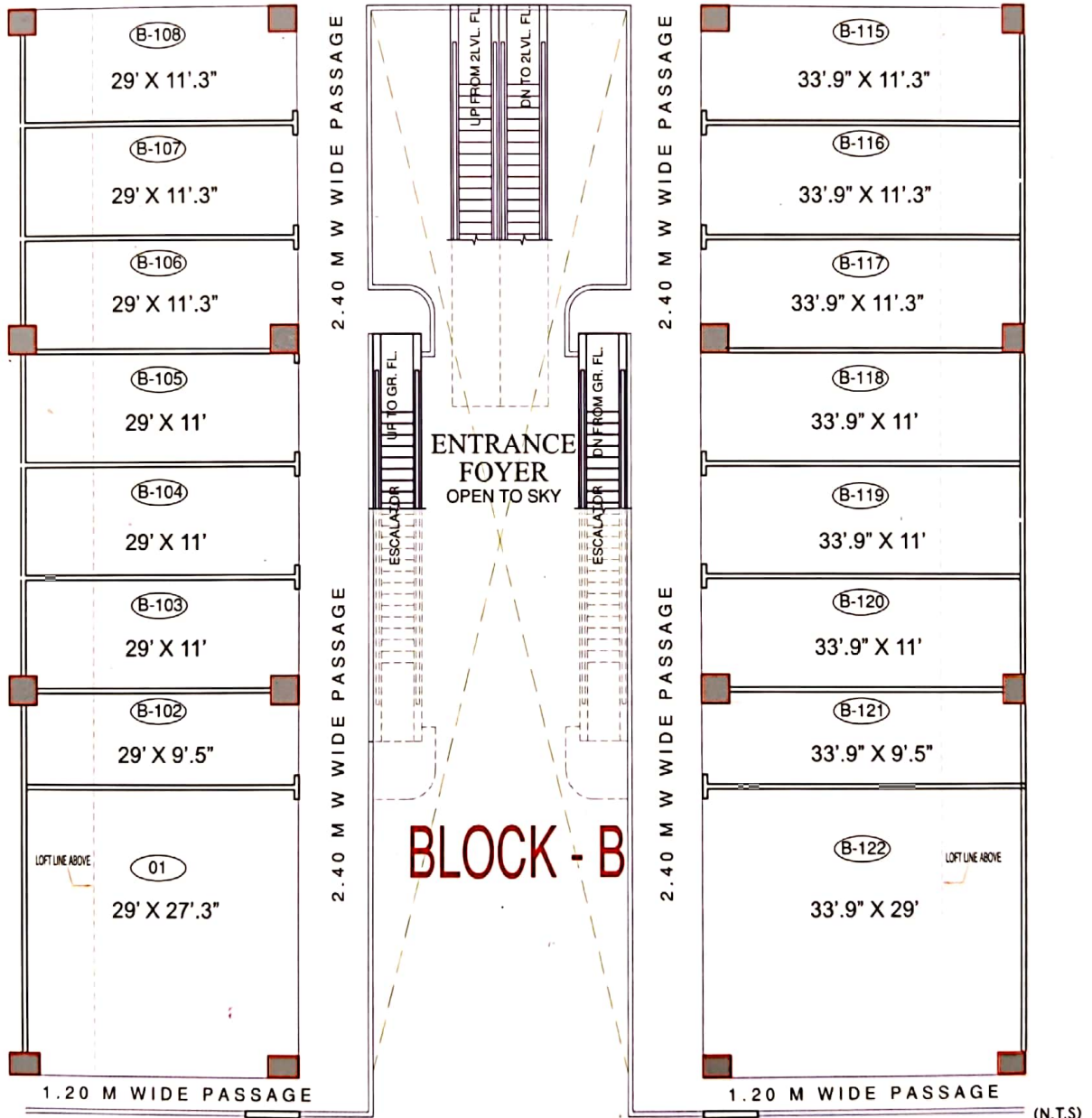
- Queens Court - 3**
- Kids Wear • Toys • Kids Footwear • Educational
  - Cooking /Café/Bakery/Ice-cream/Restaurant/Catering • Book Store
  - Stationary • Kitchen • Fitness • Pets Accessories • QSR

- Kings Court /Queens Court - 4**
- Auto 4 wheelar • Auto 2 wheelar • Auto bike • Auto finance • Auto accessories • Bank ATM

**2014 में तैयार**  
**किंग्स कोर्ट-1 व**  
**क्वीन्स कोर्ट-1**



2.40 M W WIDE PASSAGE



(N.T.S)

**SHOPPING ARCADE SPECIFICATION** - • 600x600 vitrified tiles inside shop • Acrylic Emulsion paint on Walls • 600x600 vitrified tiles or Imported Marble in corridor and false ceiling 600 X 600 gypsum panels on Al frame. • Rolling shutters (lattice type) Shop windows of fixed toughened glass for roadside shops at all levels. • SS & MS railing with Glass in Corridors • Electrical Copper wiring up to Main distribution panel, Emergency lighting. • Grand Atrium with granite flooring and tensile fabric roofing. • Signages for shops

**AMENITIES** - Shopping Arcade : • Lounge area for guests/ visitors • Common Toilets : Ceramic tiles/ Sanitary Fittings/ EWC& Wash basins : Duravit/ American Standard/ ROCA/ KOHLER/ JAGUAR/ PREMIUM CP BRANDS. Urinals with granite partition, Mirrors, Water cooler with good exhaust arrangements **Safety & Security** : • CCTV Security System • Automatic boom entry • Security cabin at entrance • Fire Fighting, Alarm & Sprinkler system • Underground Electrical network. **Essentials** : • Water softener plant • 100% DG backup for common areas • Pre-installed network for DTH/ Cable TV/ Telephone/ Data **Eco-friendly Features** : • Solar/ LED lights • Rain water harvesting • Zero discharge STP design **Landscaping** : • Grand entrance • Wide landscaped street • Pedestrian friendly pathways • Excellent signage's • Entrance lighting • Excellent signage's • Entrance lighting **Superior Specs** : • Schindler/ OTIS/ Johnson equivalent HI-tech Energy Efficient Gearless Automatic door Lifts, Goods lift and Escalators • Earthquake resistant design • Ample parking space and Mechanical car parking system • Multiple entry and exit • Well-designed traffic circulation/ flow • Adequate water supply • Global standard plumbing and electrical • Outdoor unit space for AC • Vaastu compliant

\* Terms & Conditions Apply. Disclaimer : Specifications, Write-ups, Internal Layouts and pictures shown in this brochure are only indicative and subject to change at the sole discretion of the developer.



# ENTER AN AFFLUENT COMMERCIAL ADDRESS



**IDEAL CORPORATE SPACES FOR THE GROWTH OF YOUR BUSINESS**  
**2 TOWERS | 18 STORIED EACH | 520 OFFICES**

**PROFESSIONAL ADVANTAGES :** • Perfectly planned office spaces • Ideal for Professionals, Banks, BPOs & Large Corporate Ventures • Professional Environment • Completely Wi-Fi enabled Campus • Situated among the best International brand outlets • Separate pantry and wash-room for each office

**HIGHLIGHTS OF ONE WORLD TRADE TOWER (OWTT)** • Two 18 storied tallest commercial buildings in Bhopal • First business centre in Bhopal with seminar, conference rooms and business party hall. • Two Internally Connected Floors of Skyline Offices with Ample Space • Attractive Glass Facade



**TYPICAL FLOOR PLAN**

FROM 1<sup>ST</sup> TO 6<sup>TH</sup>, 9<sup>TH</sup> TO 11<sup>TH</sup> OF TWO WINGS

- OFFICE SPECIFICATION**
- Flooring: 600x 600 vitrified tiles • Acrylic Emission paint on Walls
  - Doors: Flush doors with Wooden Frames • Toilets/ Pantry: Granite Frame;
  - Anti-skid ceramic tiles; Granite Platform panel • Sanitary Fittings/ EWC: Durovit/ American Standard/ ROCA/ KOHLER/ JAGUAR/ PREMIUM BRANDS

**AMENITIES**

- State of Art building with large floor plates with scalability options • 100% DG back up for common areas • Schindler/ OTIS/ Johnson equivalent Hi tech Energy Efficient Gearless Automatic door Lifts • Earthquake resistant design
- Ample parking • Multiple Entry and Exit • Boom Barrier & Crash Guards
- CCTV Security System • Security cabin at entrance • Fire Fighting, Alarm & Sprinkler system • Well-designed traffic circulation/ flow • Adequate water supply • Global standard plumbing and electrical • Voastu compliant
- Separate Pantry & Wash Room for each Office • Conference & Banquet facilities • Business services/ Business lounge (Photocopy/ Internet room)
- Complete Wi Fi enabled campus • Excellent signages • Situated amongst the best International brand outlets • Fitness Center • Relaxation & Rejuvenation Center • Smokers Room • ATMs • Cafe/ Food Courts • Well Designed Reception/ Entrance Lobby with Imported Marble • Drivers lounge
- Solar/ LED lights • Rain water harvesting • Zero discharge STP design
- Underground Electrical network

**OFFICE ZONING**

- Banks • Insurance Company • Cafe • Financial Institutions • QSR
- Courier • CA'S • Doctors • Pharmacy • Legal Firms Consultants-HR
- Management • Finance & Other Classes-IT • Music • Dance • Design
- Yoga • Education • Coaching • Airlines • Travel Agencies • Cargo
- Forex • Ad Agencies • Studios • SME Offices • Auto Companies Offices
- Architects • E-Commerce • IT COS • BPO • Corporate • Mnc & Many More

• Terms & Conditions Apply. Disclaimer : The above is an indicative list of amenities. Developer reserves the right to improve, change or eliminate the amenities from the project. Some of the amenities may be available/ accessible for limited number of residents or members and may be subject to usage charges. Specifications, Write-ups, Internal Layouts and pictures shown in this brochure are only indicative and subject to change at the sole discretion of the developer.



**MAJESTIC HEIGHTS OF 250 FT., THE TALLEST TOWER IN M.P. WITH 22 FLOORS**



# THE ROYALE RESIDENCES- 3D PLANS



**PREMIUM TYPE - 1**

• Carpet Area - 1248 Sq.Ft. • Balcony Area - 355 Sq.Ft. • Total Area - 1601 Sq.Ft.



**PREMIUM TYPE - 3**

• Carpet Area - 896Sq.Ft. • Balcony Area - 271 Sq.Ft. • Total Area - 1167 Sq.Ft.



**PREMIUM TYPE - 2**

• Carpet Area - 1233 Sq.Ft. • Balcony Area - 317 Sq.Ft. • Utility Area - 19 Sq.Ft. • Total Area - 1569 Sq.Ft.

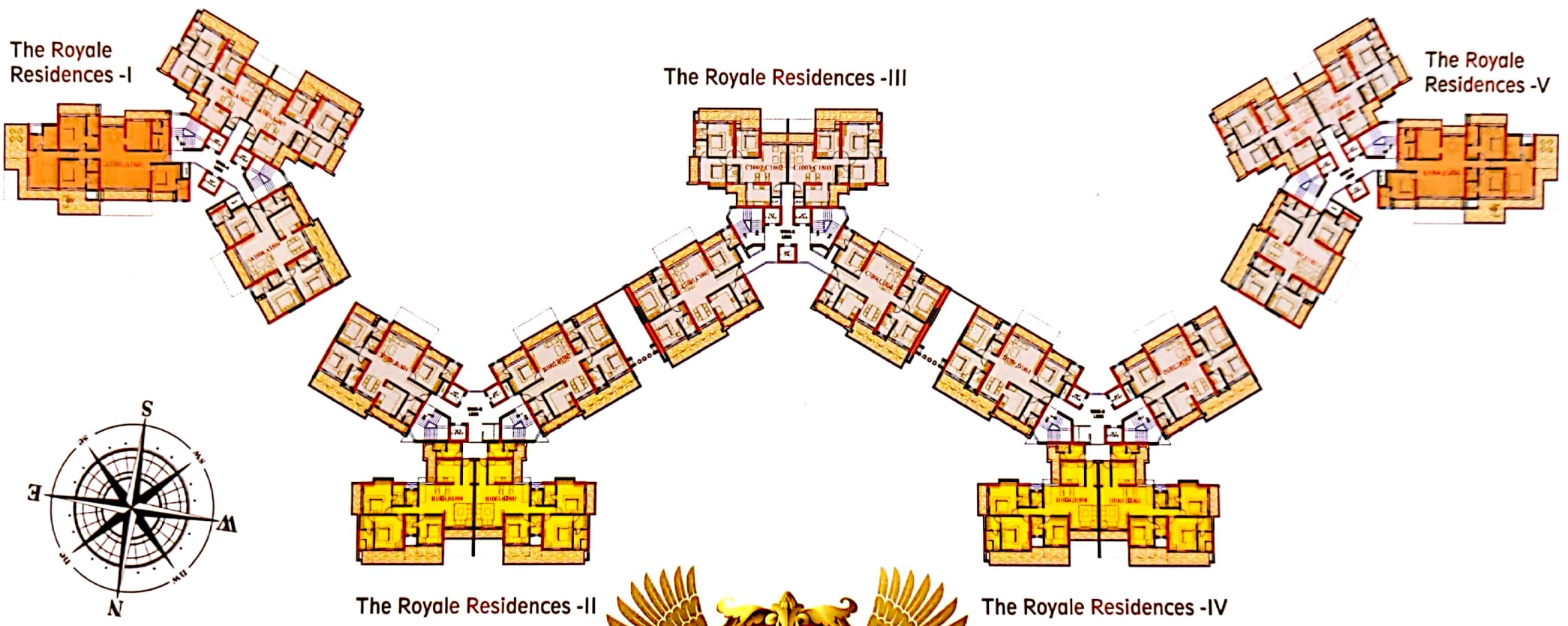


**SUPER PREMIUM TYPE - 2**

• Carpet Area - 1610 Sq.Ft. • Balcony Area - 636 Sq.Ft. • Utility Area - 28 Sq.Ft. • Total Area - 2274 Sq.Ft.

\* Terms & Conditions Apply. Disclaimer : Specifications, Write-ups, Internal Layouts and pictures shown in this brochure are only indicative and subject to change at the sole discretion of the developer.

# LAYOUT PLAN



\* Terms & Conditions Apply. Disclaimer : Specifications, Write-ups, Internal Layouts and pictures shown in this brochure are only indicative and subject to change at the sole discretion of the developer.



# UNMATCHED EXCLUSIVE PREMIUM LIVING, FINEST AMENITIES, ELITE ENCLAVE

## UNMATCHED LOCATION BHOPAL'S CENTER MOST PREMIUM LOCATION

### ONLY THE INDIA'S FINEST COMPANY CAN CREATE THE INDIA'S FINEST HOMES

• Unmatched Height - Unmatched View • Unmatched Neighbors • Unmatched Investment; Unraveled Capital Appreciation • Unmatched Location • Unmatched Developer - Gammon, who have delivered milestones like the Gateway of India in 1919, Metros, Airport & many more milestones in several countries. Now, Gammon proudly presents Shrishti, at the most premium location of Bhopal.

**SPECIFICATION - ROYAL RESIDENCES APARTMENTS** - • **Flooring** : Laminated wooden flooring (In master bedroom); 900x900 vitrified tiles • **Acrylic Emulsion paint on Walls** • **Doors/ Windows** : Veneer on Main Door; Flush doors with Wooden Frames; Anodized Aluminum sliding French Windows (with 1 netted panel) • **Balcony/ Decks** : SS & MS railing with Glass, Vitrified Tiles Matt finish • **Kitchen**: Modular kitchen cabinets WITH CHIMNEY and SS Sink • **Toilets** : Anti-skid ceramic tiles; Water heater (In master bed toilet); Aluminum anodized Louvered Windows, Wash basin with granite platform. • **Electrical** : All copper wiring with inverter provision, premium modular switches and sockets. • **Safety/ Security**: Video door phone with color screen; Gas Detector • **Sanitary Fittings/ EWC** : Duravit/ American Standard/ ROCA / KOHLER/JAGUAR/PREMIUM BRANDS.

**SPECIFICATION - PENTHOUSE** • Customizable Floor Plans • **Flooring** : Laminated wooden flooring (In All bedrooms); 900x900 vitrified tiles • **Acrylic Emulsion & Oikos (Italian) Paint on feature walls** • **Doors/ Windows** : Premium Veneer finish on Main Door; Flush doors with Wooden Frames; Anodized Aluminum sliding French Windows (with 1 netted panel) • **Balcony/ Decks**: Decks • Wooden flooring; SS & MS railing with Glass, Vitrified Tiles Matt finish • **Kitchen** : Premium Modular kitchen cabinets With Chimney; SS Sink; Dishwasher; Washing Machine & Refrigerator • **Toilets** : Anti-skid ceramic tiles; Water heater (In master bed toilet); Aluminum anodized Louvered Windows, Wash basin with granite platform, 2 no's counter top Wash basins; Steam room, Rain shower • **Electrical**: All copper wiring with inverter provision, premium modular switches and sockets. Mood lighting • **Safety/ Security** : Video door phone with color screen; Gas Detector • **Sanitary Fittings/ EWC** : Duravit/ American Standard/ ROCA / KOHLER / JAGUAR/ PREMIUM BRANDS • **VRV/ VRF Air-conditioning System & Solar water heater** • 100% DG back up for each penthouse • **Common Floor Lobby** : Imported Marble Flooring

**AMENITIES - ROYAL RESIDENCES** - • Clubhouse/ Sky Lounge • Swimming pool • Kids pool • Modern Gym • Indoor Games : Squash; Snooker; Chess; Carom; Darts; Cards; Table tennis • Multi-purpose Courts • Reading room • Library • Café/ Restaurant • Spa/ Sauna/ Steam/ Jacuzzi • Aerobics room • Meditation room • Yoga room • Community hall • Banquets Hall • Meeting Room • Mini Theater • Business services/ Business lounge ( Photocopy/ Internet room) • Guest rooms

**SPORTS** - • **Outdoor Games** : Badminton, Skating Ring, Basketball, Volleyball, Tennis, Cycling, Jogging, Net Cricket • Artificial Rock Climbing

**KIDS** - • Crèche • Day care • Kids play area • School drop off zone

**HEALTH** - • Pathology collection centre • Ambulance parking • Dispensary

**DAILY NEEDS** - • Car wash area • Driver's lounge • ATM • Unisex Parlour • Chemist • Bakery Shop • Dry cleaner • Vegetable shop • Milk Shop • Boutique • Indoor games

**SAFETY & SECURITY** - • CCTV Security System • Automatic boom entry • Security cabinet entrance • Fire Fighting, Alarm & Sprinkler system • Underground Electrical network

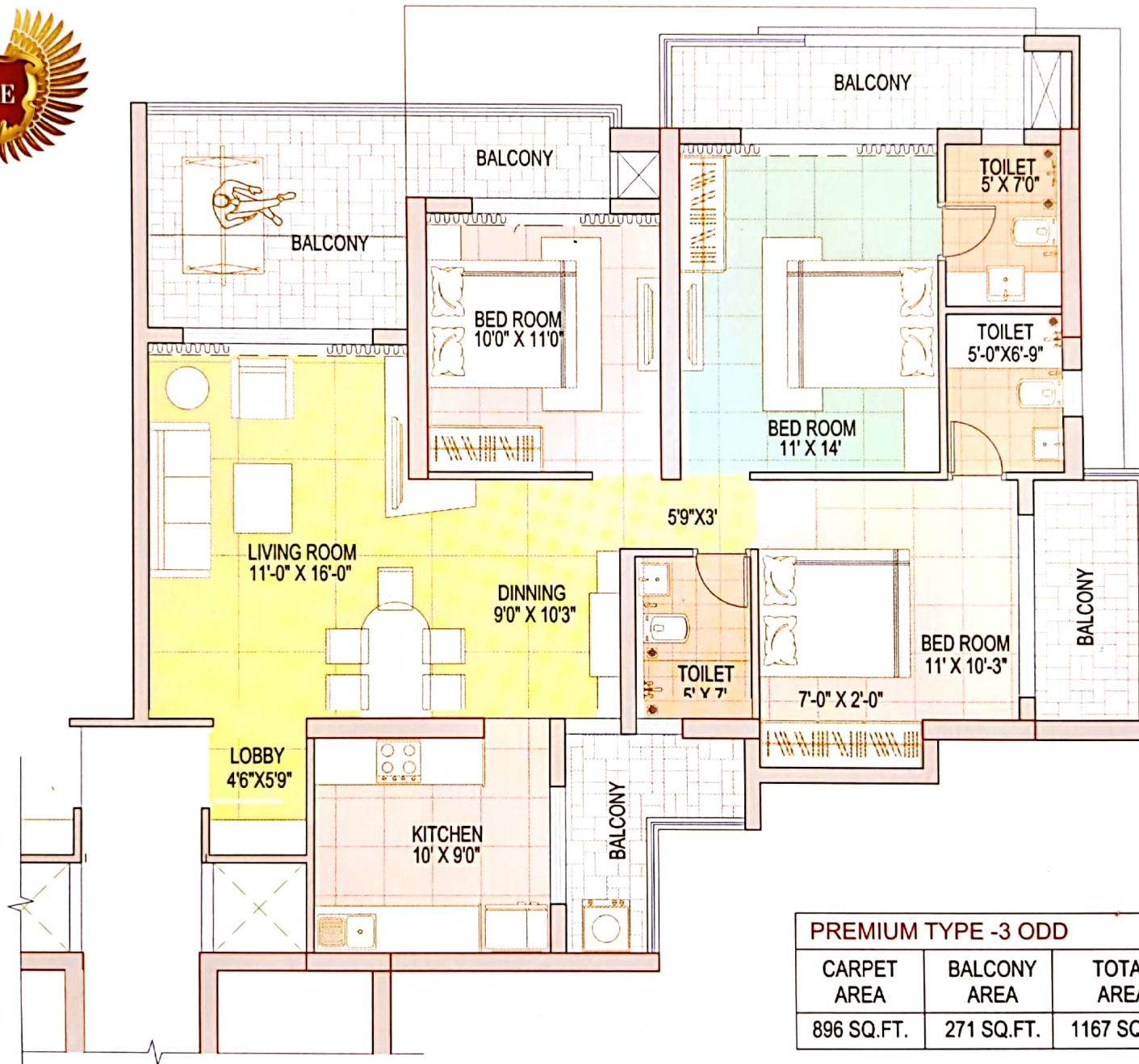
**ESSENTIALS** • Water softener plant • Pipes gas in each flat • 100 % DG backup for common areas • 1 KV DG back up in each flat • Wi-Fi Enabled Campus • Separate Servant room • Pre-installed network for DTH/ Cable TV

**ECO-FRIENDLY FEATURES** - • Aquarium • Solar/ LED lights • Rain water harvesting • Zero discharge STP design • Garbage Chutes for Wet & Dry collection

**LANDSCAPING** - • Grand Entrance • Wide landscaped street • Pedestrian friendly pathways • Canopies / benches along pathways • Excellent Signage's • Green House • Gazebos • Amphitheater • Entrance Lighting • Mural Wall • Pets Park • Maze • Rose Garden • Mughal Garden • Rock Garden • Roman Garden • Zen Garden • Herb Garden • Sculptures • Waterfall • Light Fountain • Senior Citizen Park

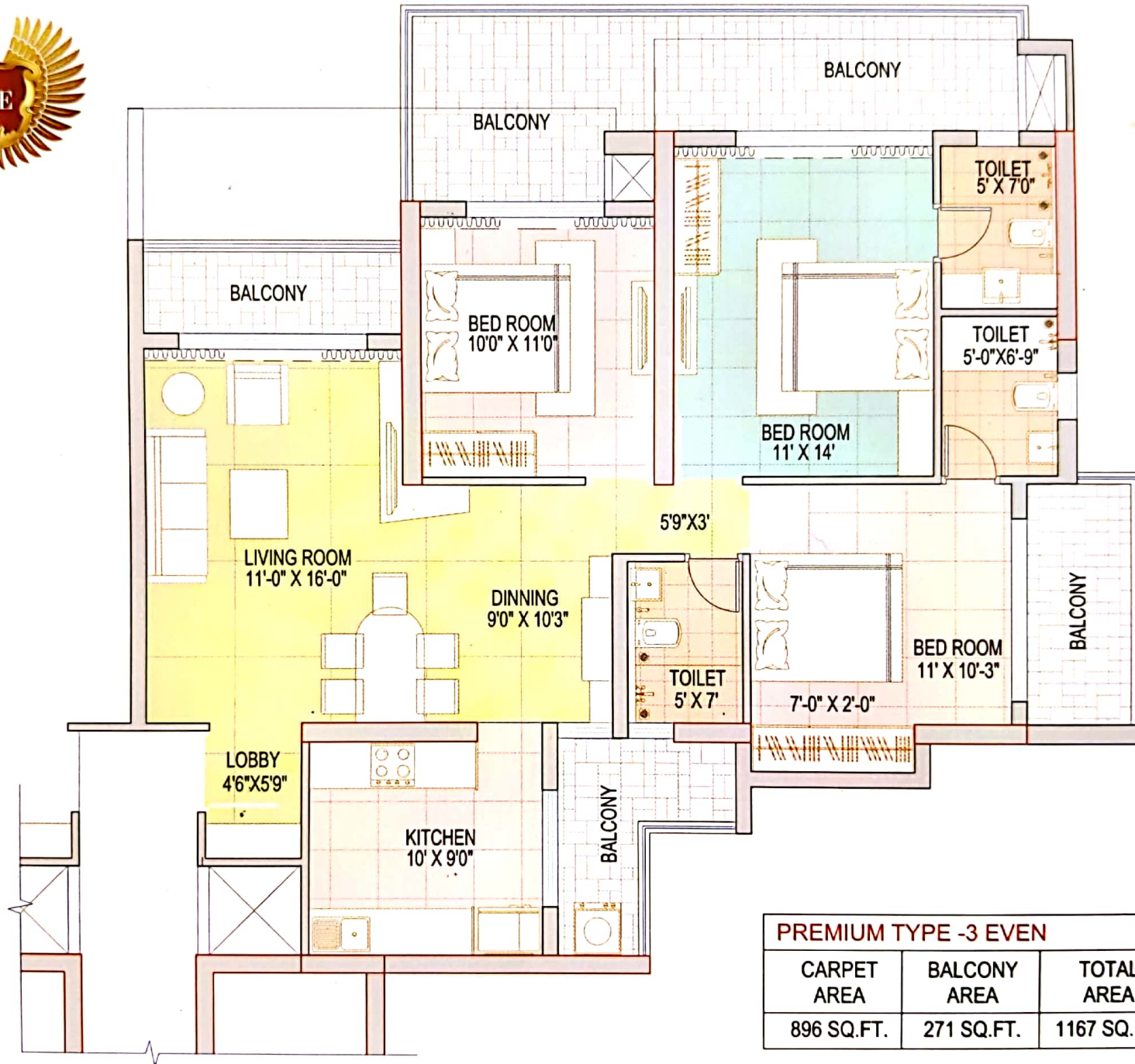
**SUPERIOR SPECS** - • Two side open cross ventilated units • Schindler/ OTIS/ Johnson equivalent Hi-tech Energy Efficient Gearless Automatic door Lifts and one stretcher lift in each building • Earthquake resistant design • Ample parking • Multiple entry and exit • Well-designed traffic circulation/ flow • Golf cart pick up and drop on fix frequency in township for residents • Adequate water supply • Global standard plumbing and electrical • Wheelchair friendly pathways • Inverter space • Dormitory for Domestic help • Geyser in Premium Apartments • RO in premium apartments • Exhaust in Toilets • Pre-installed Pulley cloth dryer in premium apartments • Outdoor Unit Space for AC • Wide Balconies • Vaastu Compliant

\* Terms & Conditions Apply. Disclaimer : The above is an indicative list of amenities. Developer reserves the right to improve, change or eliminate the amenities from the project. Some of the amenities may be available/ accessible for limited number of residents or members and maybe subject to usage charges. Specifications, Write-ups, Internal Layouts and pictures shown in this brochure are only indicative and subject to change at the sole discretion of the developer.



PREMIUM TYPE -3 ODD		
CARPET AREA	BALCONY AREA	TOTAL AREA
896 SQ.FT.	271 SQ.FT.	1167 SQ.FT.

\* Terms & Conditions Apply. Disclaimer : Specifications, Write-ups, Internal Layouts and pictures shown in this brochure are only indicative and subject to change at the sole discretion of the developer. (N.T.S)



\* Terms & Conditions Apply. Disclaimer : Specifications, Write-ups, Internal Layouts and pictures shown in this brochure are only indicative and subject to change at the sole discretion of the developer. (N.T.S)