



STEP INTO
A BEAUTIFUL
LIFESTYLE &
EXPERIENCE LIFE LIKE
NEVER BEFORE.

NIRMALA CONSTRUCTIONS

By H N Vijaya Raghava Reddy & Co
VRR & Co Builders

Office Address: Nirmala Nilaya, No. 206, 18th Main, 6th Block,
Koramangala, Bangalore - 560095.

Site Address: Sy.No. 253/1& 253/2 of Hulimangala Village,
Jigani Hobli, Anekal Taluk, Bangalore Urban - 560105.



ARCHITECTS:
SATYAKANTI & ASSOCIATES
ARCHITECTURE & INTERIORS
49/50, Tulsi Manor, 80 Feet Road End,
R. T. Nagar, Bangalore - 560 032.

E-mail: satyakanti@gmail.com

CREATIVE FORCE 9740789166

Note: This brochure is a purely conceptual presentation and not a legal offering. The developers reserve the right to change plans, specifications and features without prior notice or obligation, at their sole discretion. Specifications, write ups, layouts, plans and pictures shown in this booklet are only indicative. All rendering, pictures and maps are the artists conceptions and not actual depictions of the building, its walls, roadways or landscaping.

RERA Approved No.:
PRM/KA/RERA/1251/308/PR/040823/006114



BDA Approved No. :
BDA/NAMA/ASA/AA-3/TASA-2/D/37-2022-23



These are an artist's impression only and not the actual images.



A PARADIGM RE-DEFINED

A SHIFT TOWARDS CONTEMPORARY LIVING.

At VRR Green Crest you find yourself living in an elegant apartment amidst soothing greens. You will experience comforts and luxuries many notches above the mundane. **This BDA approved project, offers homes in 4 wings, with options of 2 & 3 bedrooms.** The enviable location of the project, within half a kilometer of your daily shopping needs, coupled with the best of facilities and amenities is bound to ease out your stress and make way for a peaceful life.



2 & 3 BHK
Residences



Homes In A Throbbing
Sector Of Bengaluru



Lush Green
Surroundings



This is an artist's impression only and not the actual image.



LUXURIOUS LIFE WITH AN AESTHETIC FLAVOUR.

VRR Green Crest opens the doors to a serene, elegant and comfortable life. The spacious living rooms and bedrooms, well appointed dining areas, smart kitchens, utility areas and airy balconies, speak volumes of the architectural and aesthetic finesse.



Architecturally
Planned Spacious Homes



Wide Spacious
Balconies



Well Thought Out
Cross Ventilation



This is an artist's impression only and not the actual image.



MULTIDIMENSIONAL ENTERTAINMENT WITH AN ARRAY OF CHOICES

The 2 multi purpose halls at **VRR Green Crest** make the project just that much more desirable. You can enjoy your indoor recreation here or utilise them for your social activities. You also have an additional party hall for all your entertaining, without the hassle of going out far in search of the right place.

A splash in the pool after a hard day at work or a stroll in the walking track makes for some wonderful unwinding. The well equipped gym for the fitness inclined is bound to take them closer to their fitness goals. Your children can play to their hearts' content without you having to worry about their safety.



Top Notch
Relaxation



Indulgence
You Deserve



Choice For
Every Age



AMENITIES

- ❖ Children's play area.
- ❖ Swimming pool with toddlers' pool.
- ❖ Two multi-purpose halls.
- ❖ Party hall.
- ❖ Air conditioned gym.
- ❖ Landscaped areas.
- ❖ Meditation hall.
- ❖ Well lit open areas.

FACILITIES

- ❖ Entrance gateway with round the clock security.
- ❖ 24x7 CCTV surveillance.
- ❖ Intercom connectivity.
- ❖ 24 hours water supply.
- ❖ Rain water harvesting.
- ❖ Six lifts of reputed make.
- ❖ Sewage treatment plant (STP).
- ❖ Power back-up for each flat, lifts and common areas.
- ❖ Concrete driveway and pavers in circulation areas.



These are conceptual images only and not the actual images.

MASTER PLAN



East wing | South wing | Center wing | West wing

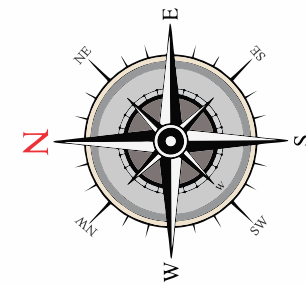
VRR Green Crest has 4 well spaced out wings, which make way for the well planned amenities spread across the entire project. This Vaastu compliant project, with no common walls, has 11 homes per floor in the East Wing, 12 homes per floor in the Centre Wing, 14 homes per floor in the West Wing and 9 homes per floor, in the South Wing.



This is an artist's impression only and not the actual image.



APARTMENT LIVING AT ITS PRIVATE AND EXCLUSIVE BEST



MASTER PLAN GROUND FLOOR



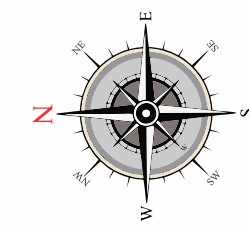
CENTER WING

WEST WING

SOUTH WING



Disclaimer: The information provided in this document including all pictures, images, plans, drawings, amenities, dimensions, elevations, illustrations, facilities, features, specifications and other information etc., mentioned are indicative of the kind of development that is proposed and are subject to the approval from the competent authorities. The agreement for sale supercedes the brochure. Agreement clauses to be referred. Floor plans, pictures, visuals, perspective views of building, model, furniture and maps are artist's conceptions and not the actuals. Features and furnishings shown are only for representation and shall not be provided in the apartment. The apartments shall be provided in a bare shell condition.



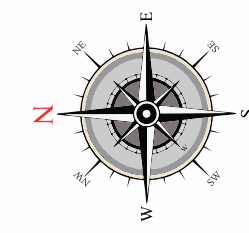
KEY PLAN

TYPICAL FLOOR PLAN
EAST WING

Disclaimer: The information provided in this document including all pictures, images, plans, drawings, amenities, dimensions, elevations, illustrations, facilities, features, specifications and other information etc., mentioned are indicative of the kind of development that is proposed and are subject to the approval from the competent authorities. The agreement for sale supercedes the brochure. Agreement clauses to be referred. Floor plans, pictures, visuals, perspective views of building, model, furniture and maps are artist's conceptions and not the actuals. Fixtures and furnishings shown are only for representation and shall not be provided in the apartment. The apartments shall be provided in a bare shell condition.

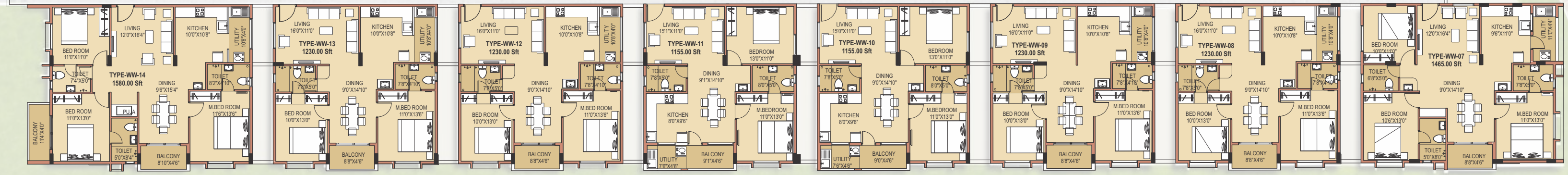
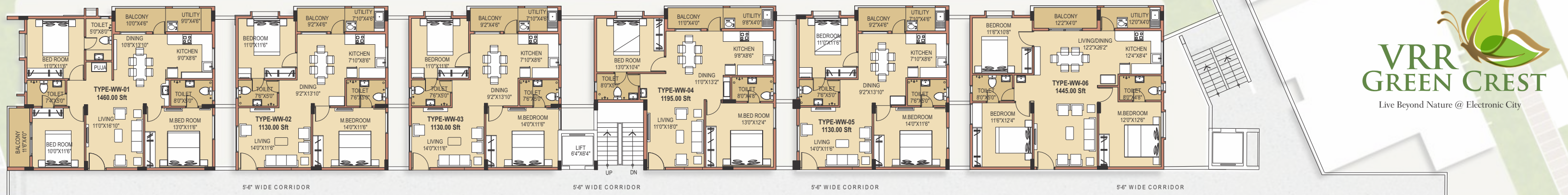


TYPICAL FLOOR PLAN
CENTER WING

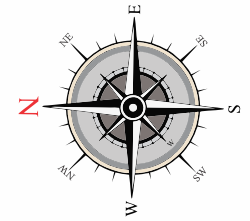


KEY PLAN

Disclaimer: The information provided in this document including all pictures, images, plans, drawings, amenities, dimensions, elevations, illustrations, facilities, features, specifications and other information etc., mentioned are indicative of the kind of development that is proposed and are subject to the approval from the competent authorities. The agreement for sale supercedes the brochure. Agreement clauses to be referred. Floor plans, pictures, visuals, perspective views of building, model, furniture and maps are artist's conceptions and not the actuals. Fixtures and furnishings shown are only for representation and shall not be provided in the apartment. The apartments shall be provided in a bare shell condition.

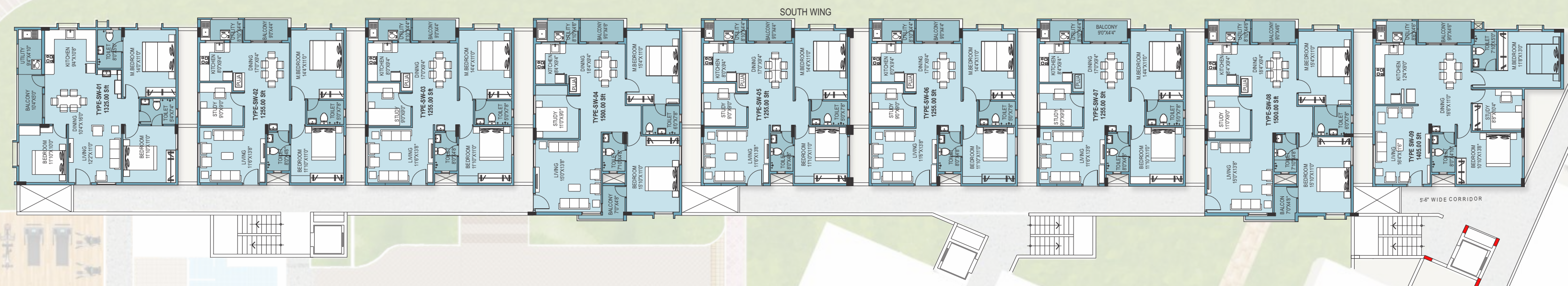


TYPICAL FLOOR PLAN
WEST WING



Disclaimer: The information provided in this document including all pictures, images, plans, drawings, amenities, dimensions, elevations, illustrations, facilities, features, specifications and other information etc., mentioned are indicative of the kind of development that is proposed and are subject to the approval from the competent authorities. The agreement for sale supercedes the brochure. Agreement clauses to be referred. Floor plans, pictures, visuals, perspective views of building, model, furniture and maps are artist's conceptions and not the actuals. Fixtures and furnishings shown are only for representation and shall not be provided in the apartment. The apartments shall be provided in a bare shell condition.

TYPICAL FLOOR PLAN
SOUTH WING



Specifications

COMMON AREAS

FLOORING: Imported marble flooring for entrance lobby and vitrified tiles for corridor

ELEVATOR: With power back-up to ensure 24/7 functionality

COVERED CAR PARK: At basement level and part of stilt level

INFRASTRUCTURE

STRUCTURE: RCC framed structure

WALLS: Concrete block masonry

FLOORING: Vitrified tiles

MAIN DOORS: Melamine polished teak door frame. Masonite shutter

INTERNAL DOORS: Enamel painted flush door

WINDOWS: UPVC-3 track with mosquito shutter

BATHROOMS

FITTINGS: Sanitary ware & CP fittings from Jaquar, Grohe or equivalent

FLOORING: Anti-skid ceramic tiles

DADO: Ceramic tiles up to 7"ht

KITCHEN

◆ Granite counter top with 2 feet ceramic tiles dado

◆ Stainless steel sink

ELECTRICAL POINTS

◆ TV, Telephone & Air conditioning in Living room & Master bedroom

SECURITY SYSTEMS

◆ CCTV surveillance

◆ Video door phone (Optional)

◆ i-Button door locking systems (Optional)

UTILITIES

◆ Utility room

◆ Provision for sink and washing machine

POWER BACK UP

◆ 1 KVA power back up for each apartment

◆ Generator back up for common lighting

SECURITY GRILLS

◆ MS grills for windows will be provided for Ground and First floor

WATER TREATMENT PLANT

◆ To provide potable water at all points



This is a conceptual image only.

Proximities:

Work Place:

Electronic City Phase I	-	5.6 km
Infosys	-	3.4 km
Wipro	-	2.7 km
BHEL	-	3.7 km
Tata Advanced Systems	-	4.8 km
Hewlett Packard	-	5.1 km
Biocon	-	6.5 km
Electronic City Phase II	-	7.3 km
Tech Mahindra	-	6.9 km
TCS	-	6.5 km

Education

Treamis World School	-	1.8 km
Institute of Health Mgmt Research	-	0.8 km
Foot Prints Play School	-	1.6 km
New Cambridge Public School	-	7.8 km
Ideal Badminton Academy	-	1.0 km
B S Intl School	-	2.9 km
Intl Inst of Information Technology	-	4.2 km
Xavier Inst of Management	-	6.2 km
PES University	-	6.0 km

Shopping

D Mart	-	5.2 km
Metro Cash & Carry	-	6.6 km
More Supermarket	-	2.9 km

Health Care

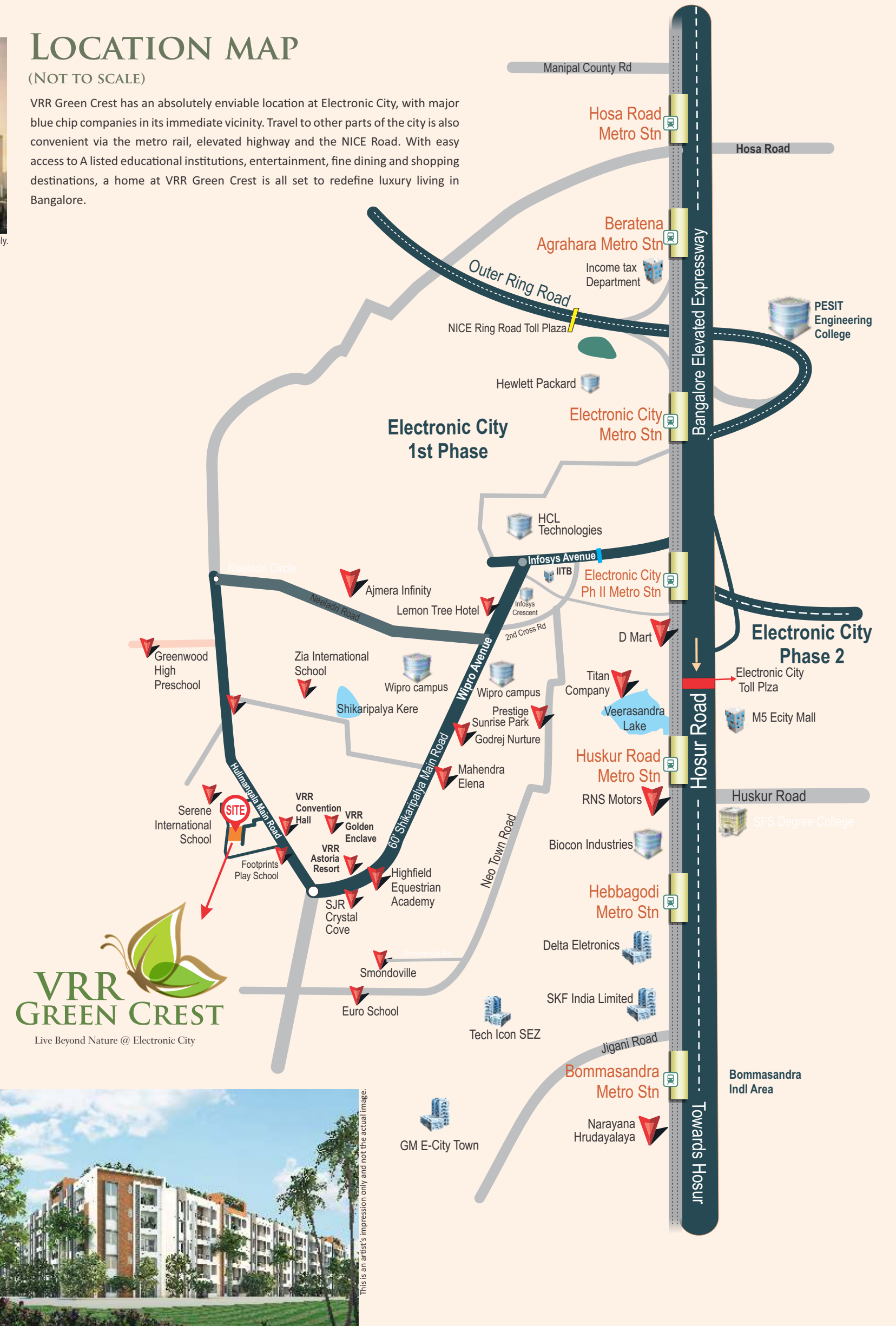
Mithra Multispeciality Hospital	-	3.4 km
Narayana Hrudayalaya	-	7.6 km
Mazumdar Shaw Medical Centre	-	8.7 km

The above distances are taken from Google Maps.

LOCATION MAP

(NOT TO SCALE)

VRR Green Crest has an absolutely enviable location at Electronic City, with major blue chip companies in its immediate vicinity. Travel to other parts of the city is also convenient via the metro rail, elevated highway and the NICE Road. With easy access to A listed educational institutions, entertainment, fine dining and shopping destinations, a home at VRR Green Crest is all set to redefine luxury living in Bangalore.



This is an artist's impression only and not the actual image.