



DREAM DEVELOPERS®



DREAM
ATLANTIS

— EMPIRE OF LUXURIES —

VASANT VALLEY RD., KALYAN (W)

CRAFTING A

Life

THAT COMMANDS
EXTRAORDINARY EXPERIENCES
ETHEREAL LUXURIES AND
EXQUISITE TRENDS

POWER, PROMINENCE AND PROSPERITY FIND THEIR PREFERRED DESTINATION AT DREAM ATLANTIS. THE MONUMENTAL LANDMARK IS POISED TO PUT KALYAN ON THE GLOBAL MAP CONFERRING A UNIQUELY DISTINCTIVE LIFESTYLE INSPIRED FROM THE LAVISH LIFE OF THE EMIRATIS. DREAM ATLANTIS IS AN EXEMPLAR OF LAVISHLY-DESIGNED RESIDENCES, KINGLY INDULGENCES AND A LIFE THAT IS AUTHENTICALLY EMIRATI AT HEART.

THE IMPOSINGLY MAJESTIC SKYRISE IS AN ADDRESS THAT BEFITS THE TASTE OF NEW-AGE MOGULS WITH ITS UNCONVENTIONAL PRIVILEGES. DREAM ATLANTIS IS POWER-STATEMENT THAT ONLY A SELECT FEW WILL BE PRIVILEGED TO FLAUNT AS THE EXTENSION OF THEIR PERSONALITY. **TO PUT SIMPLY, IT IS TIME FOR KALYAN TO WELCOME HOME.**

#TheEmiratiLife

PRESENTING

EMIRATI
Life

AT



DREAM
ATLANTIS

— EMPIRE OF LUXURIES —

PROJECT HALLMARKS:

- 45-STOREY HIGH-RISE TOWER IN THE LOCALITY
- 2, 3 & 4 BHK RESIDENCES WITH SUNDECKS
- BIGGEST CARPET AREA & SUNDECKS IN KALYAN
- RESERVED PARKING FOR EACH FLAT
- GARDEN & SCHOOL WITHIN THE PROJECT
- 2 RECREATIONAL FLOORS ALONG WITH PODIUM GARDEN

A WARM WELCOME
CRAFTED WITH

Elegance

MAGNIFICENT ENTRANCE LOBBY



LAVISHLY DESIGNED TO
ENHANCE THE ESSENCE
OF

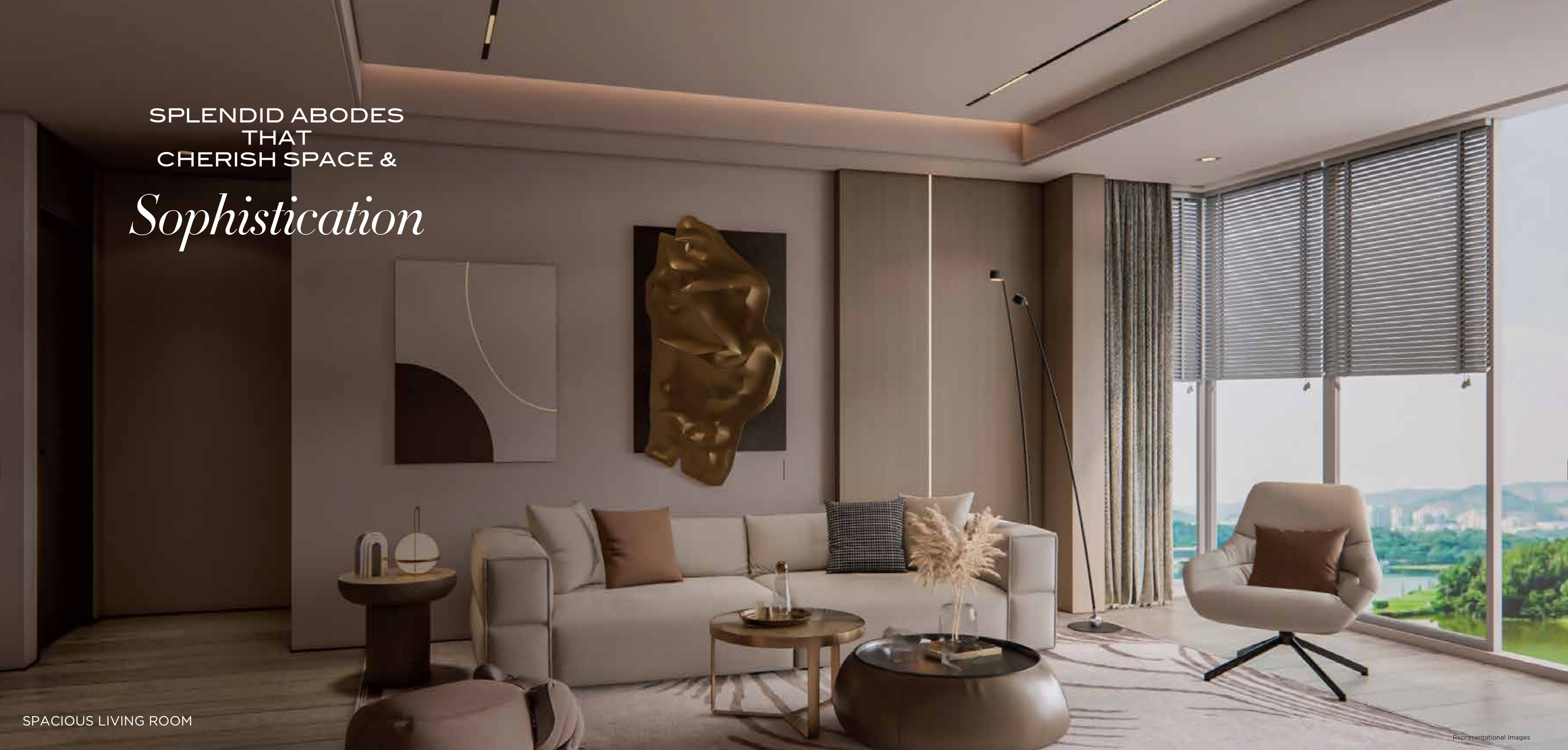
Expanse

HOMES WITH BIGGER CARPET AREA

LUXURIOUSLY DESIGNED 2, 3 & 4 BHK
RESIDENCES WITH SUNDECKS



SPLENDID ABODES
THAT
CHERISH SPACE &
Sophistication



SPACIOUS LIVING ROOM

Representational Images



PRIVACY FOCUSED BEDROOM



WELL-PLANNED KITCHEN



ELEGANT BATHROOM

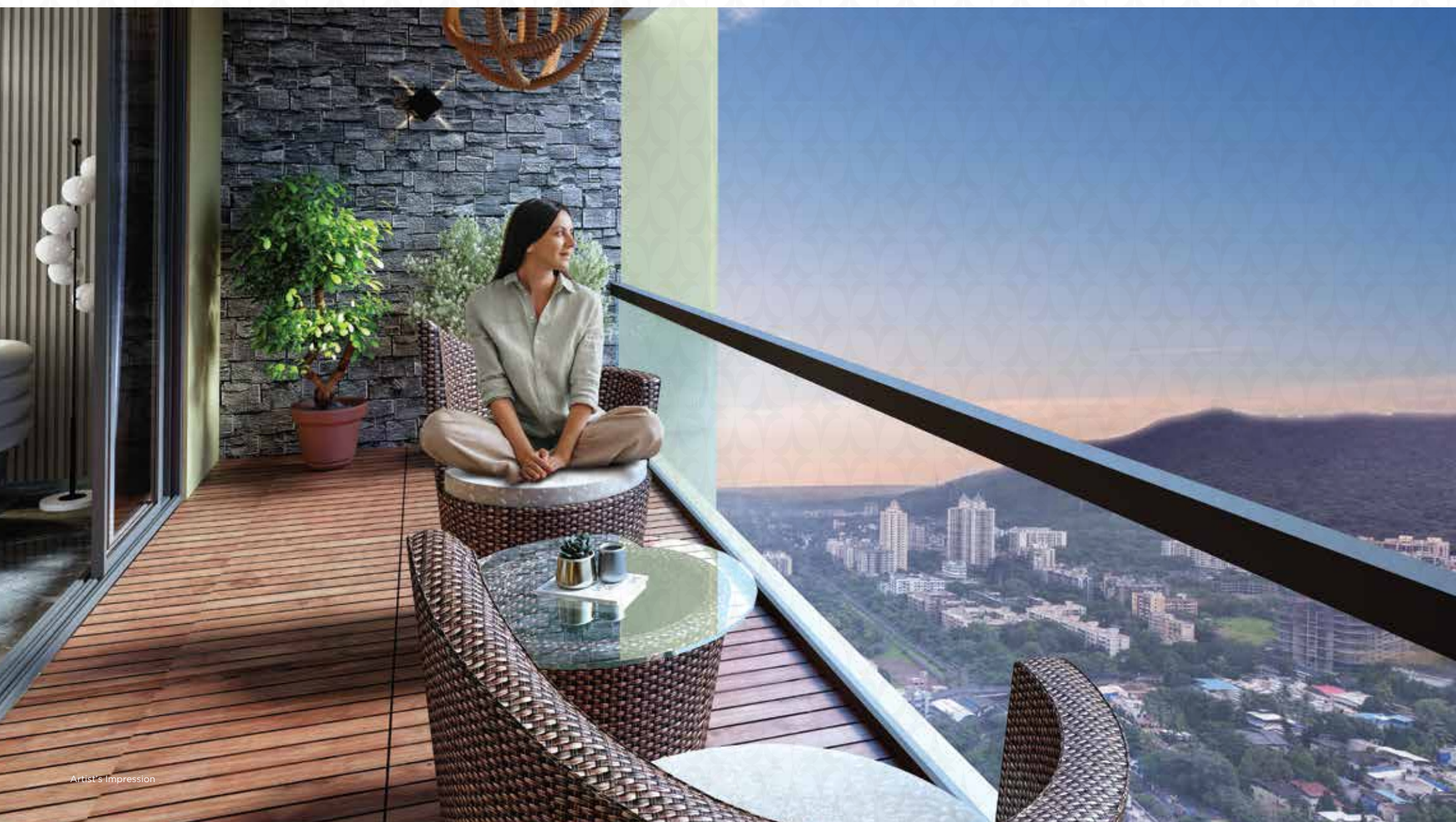
ULTIMATE COMFORT
WRAPPED IN TIMELESS

Opulence

SPACIOUS BEDROOM



Artist's Impression



Artist's Impression

IMPRESSIVE SUNDECKS
THAT
ELEVATE YOUR

Panorama

LARGER BALCONY SPACE
OPEN VIEWS

CURATED SUPERLATIVE
EXPERIENCES OF

Extravagance

IMMERSE YOURSELF IN 20+ INDULGENCES
THAT BESTOW WELLNESS, RELAXATION,
AND ENTERTAINMENT



THE EMIRATI WORLD
INSPIRED BY
YOUR HIGH-END

Aspirations

LEGEND

- 1. Swimming Pool
- 2. Kids Pool
- 3. Basketball Court
- 4. Kids Play Area
- 5. Multi-Purpose Hall
- 6. Banquet Hall
- 7. Spa & Sauna
- 8. Crèche
- 9. Café Lounge with Juice Bar
- 10. Gazebo / Walkway
- 11. Indoor Games
- 12. Steam Room
- 13. Jacuzzi
- 14. Gymnasium
- 15. Shower Room
- 16. Landscape Garden



AN AMBIENCE THAT
ELEVATES STRENGTH,
BALANCE AND

Vitality

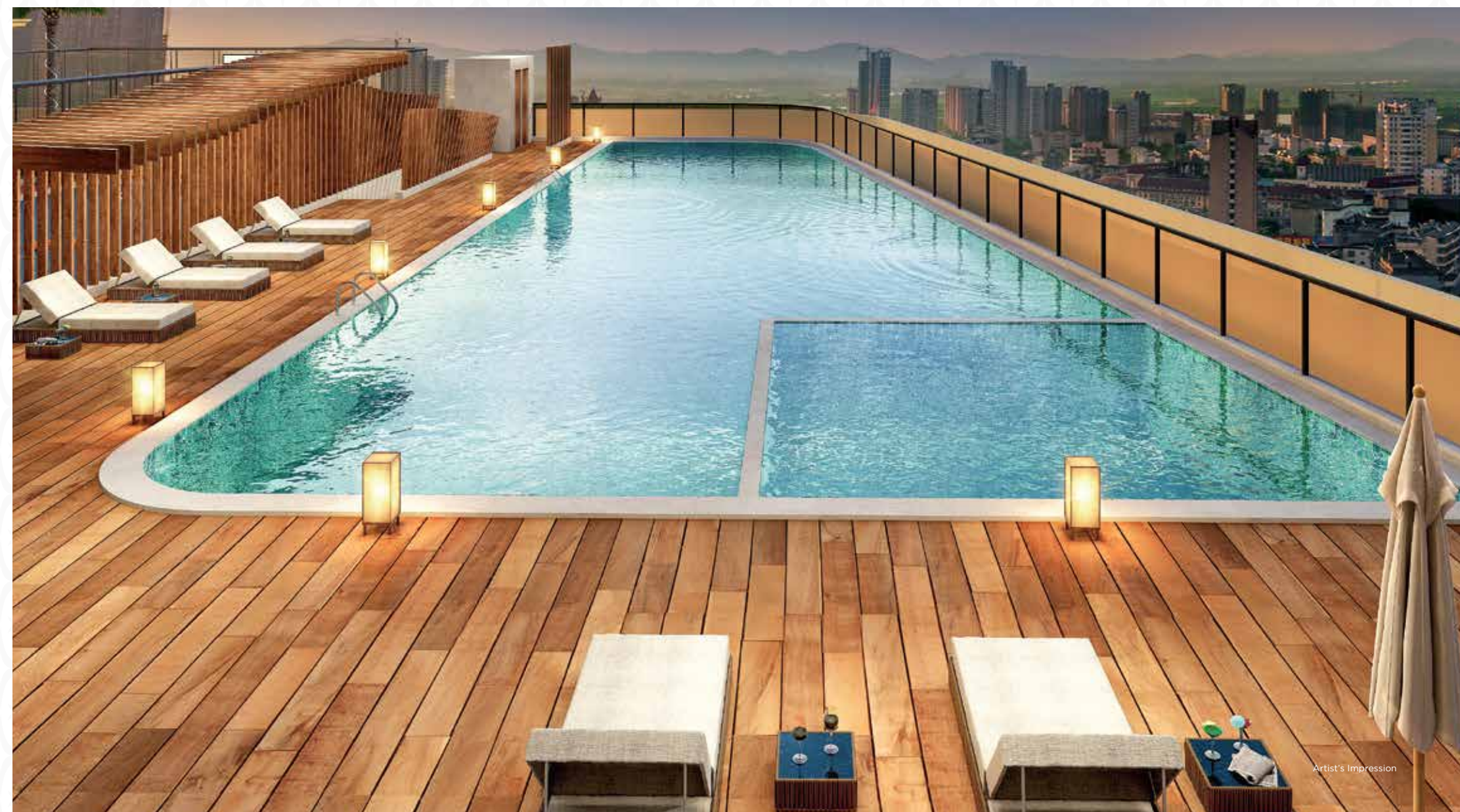
ULTRA MODERN GYM

Artist's Impression

A LIFESTYLE BUILT
ON BALANCE,
HYDRATION AND

Wellness

SWIMMING POOL



Artist's Impression



AN ADDRESS OF
ELITE-CLASS
LUXURIES AND
Lifestyle

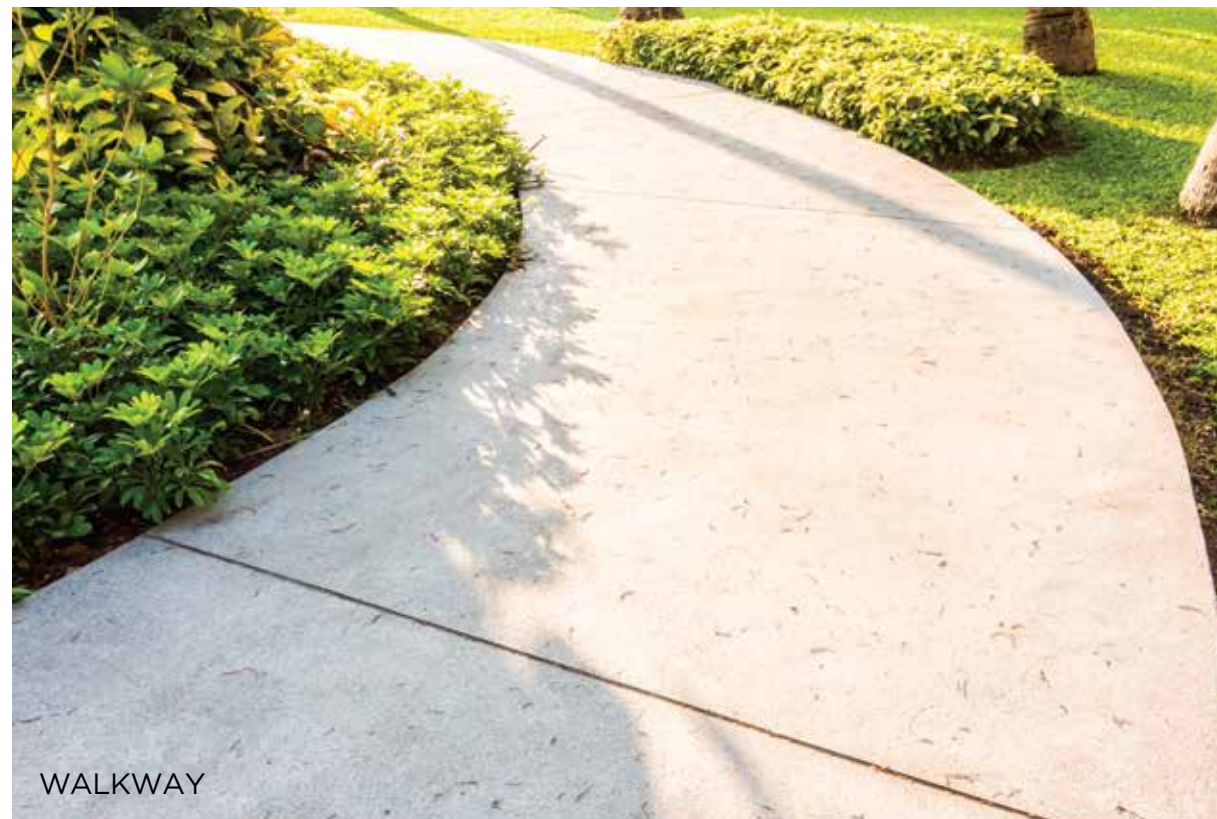
JACUZZI



BASKETBALL COURT



SPA & SAUNA



WALKWAY



STEAM ROOM

Representational image

AN ACTIVE AMBIENCE
TO CREATE JOYFUL

Memories

KIDS PLAY AREA



Artist's Impression



Artist's Impression

ELEVATE YOUR GAME
IN A SPACE MADE FOR

Champions

INDOOR GAMES ROOM



Artist's Impression

A GRAND VENUE FOR
EXTRAORDINARY

Celebrations

CELEBRATION HALL

A PLAYFUL PARADISE
FOR YOUR LITTLE

Explorers

CRÈCHE



Artist's Impression

TOP-NOTCH EXPERIENCES
DESIGNED FOR YOUR ULTIMATE
Indulgence



20TH FLOOR AMENITIES

- 1 Boxing Ring
- 2 Yoga, Meditation & Aerobic Room
- 3 Pet Park
- 4 Guest Room
- 5 Pantry
- 6 Music Room
- 7 Zumba Space
- 8 Library / Work from home Space
- 9 Café Lounge with Juice Bar
- 10 Mini Theatre
- 11 Study Room
- 12 Refuge Area

EXPERIENCE THE
LUXURY OF PRIVATE

Screening

MINI THEATRE



Artist's Impression



Artist's Impression

CULTIVATE CONNECTIONS
OVER COFFEE AND

Conversation

CAFÉ LOUNGE



Artist's Impression

A PLACE TO CONNECT
AND REFRESH YOUR

Senses

JUICE BAR

THE IDEAL SETTING
FOR FOCUS,
CREATIVITY AND

Success

LIBRARY / WORK FROM HOME SPACE



Artist's Impression

UNITE WITH THE
PULSE OF ULTIMATE

Revival

YOGA, MEDITATION & AEROBIC ROOM



Artist's Impression



Artist's Impression

A PASSION-PLACE
DESIGNED TO UNLEASH
YOUR ULTIMATE

Power

BOXING RING

TYPICAL FLOOR PLAN

10TH, 14TH, 18TH, 22ND, 26TH, 30TH, 34TH, 38TH & 42ND FLOOR



TYPICAL FLOOR PLAN

9TH, 11TH, 13TH, 15TH, 17TH, 19TH, 21ST, 23RD, 25TH, 27TH,
29TH, 31ST, 33RD, 35TH, 37TH, 39TH, 41ST & 43RD FLOOR

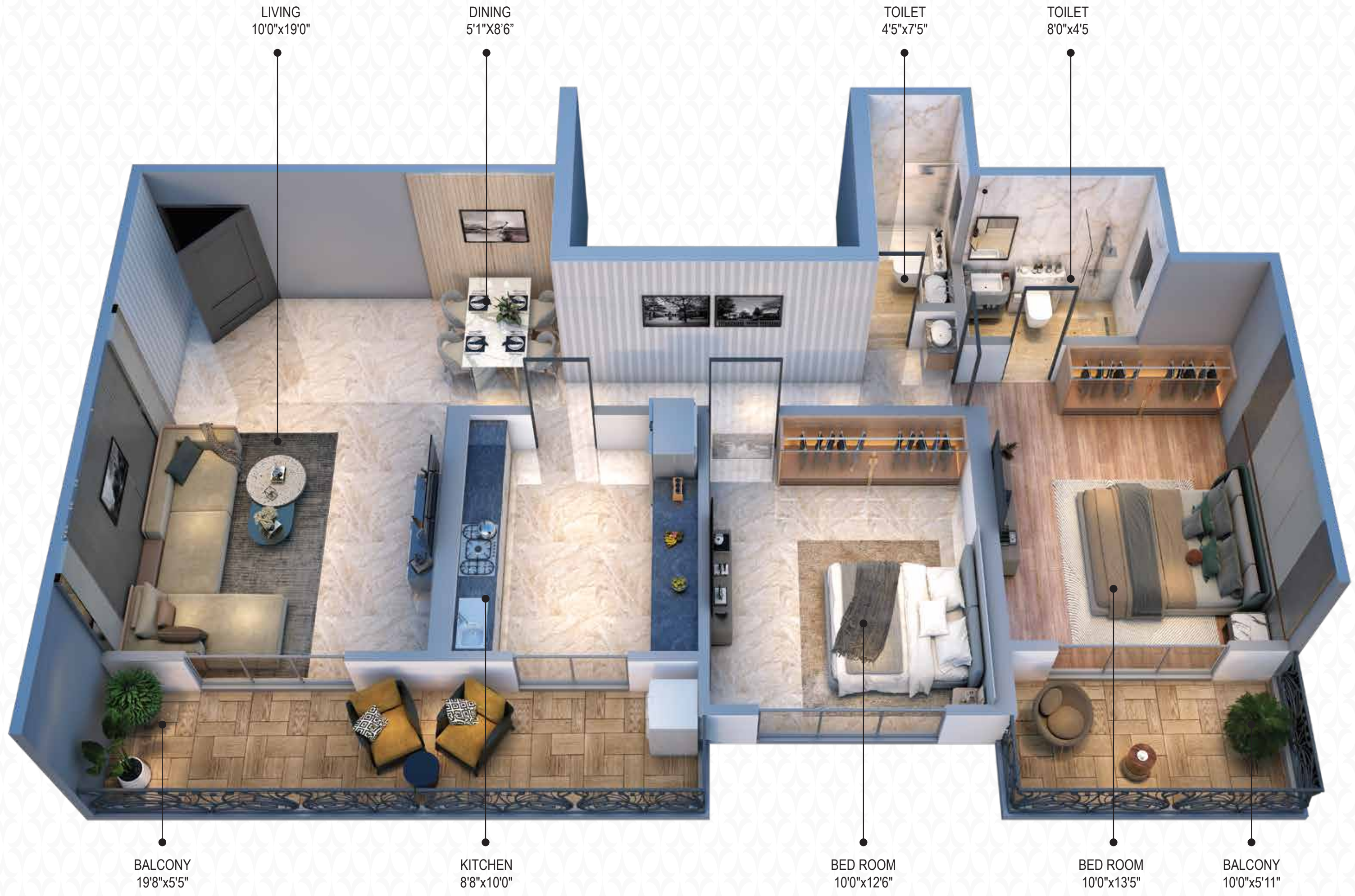


REFUGE FLOOR PLAN

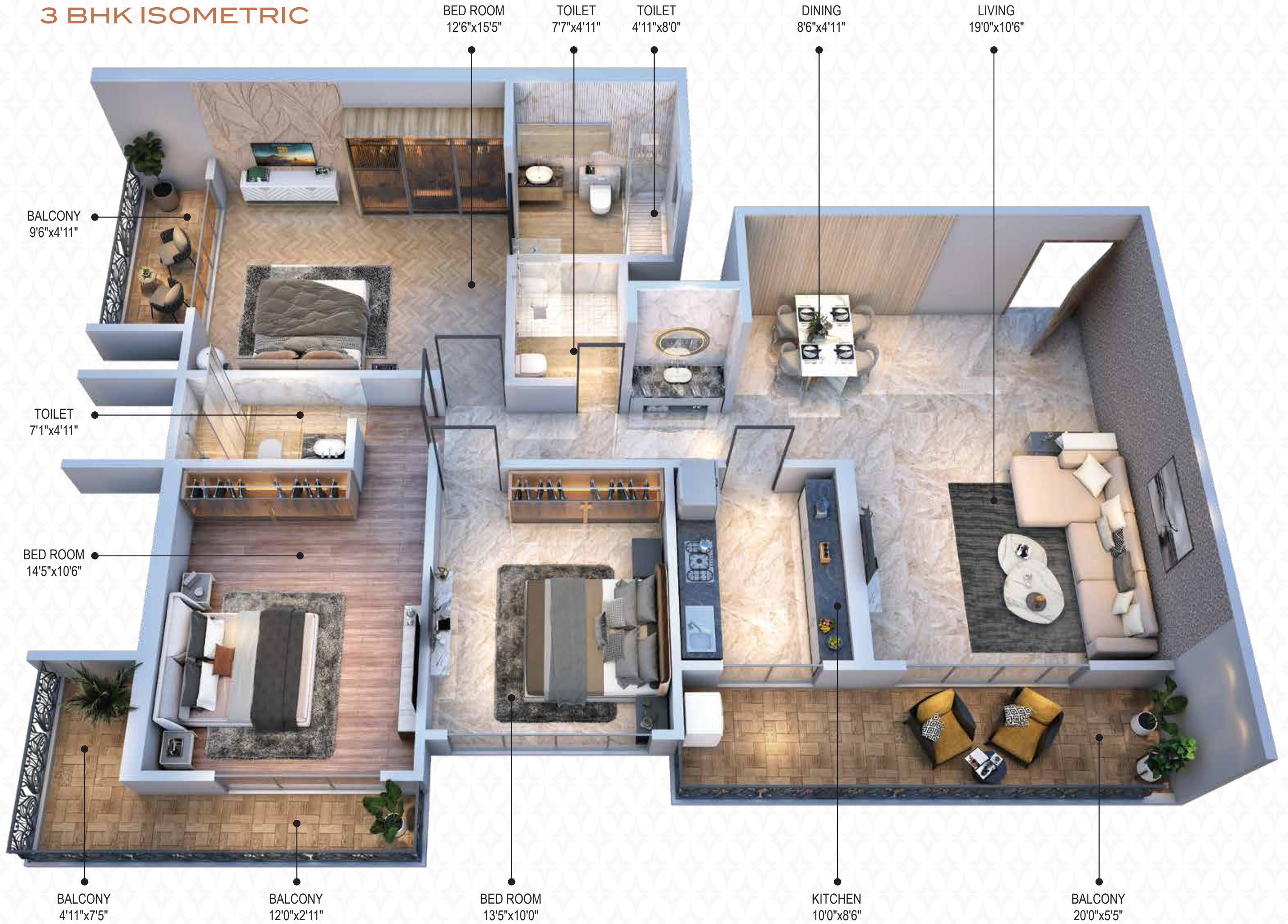
8TH, 12TH, 16TH, 24TH, 28TH, 32ND, 36TH, 40TH & 44TH FLOOR



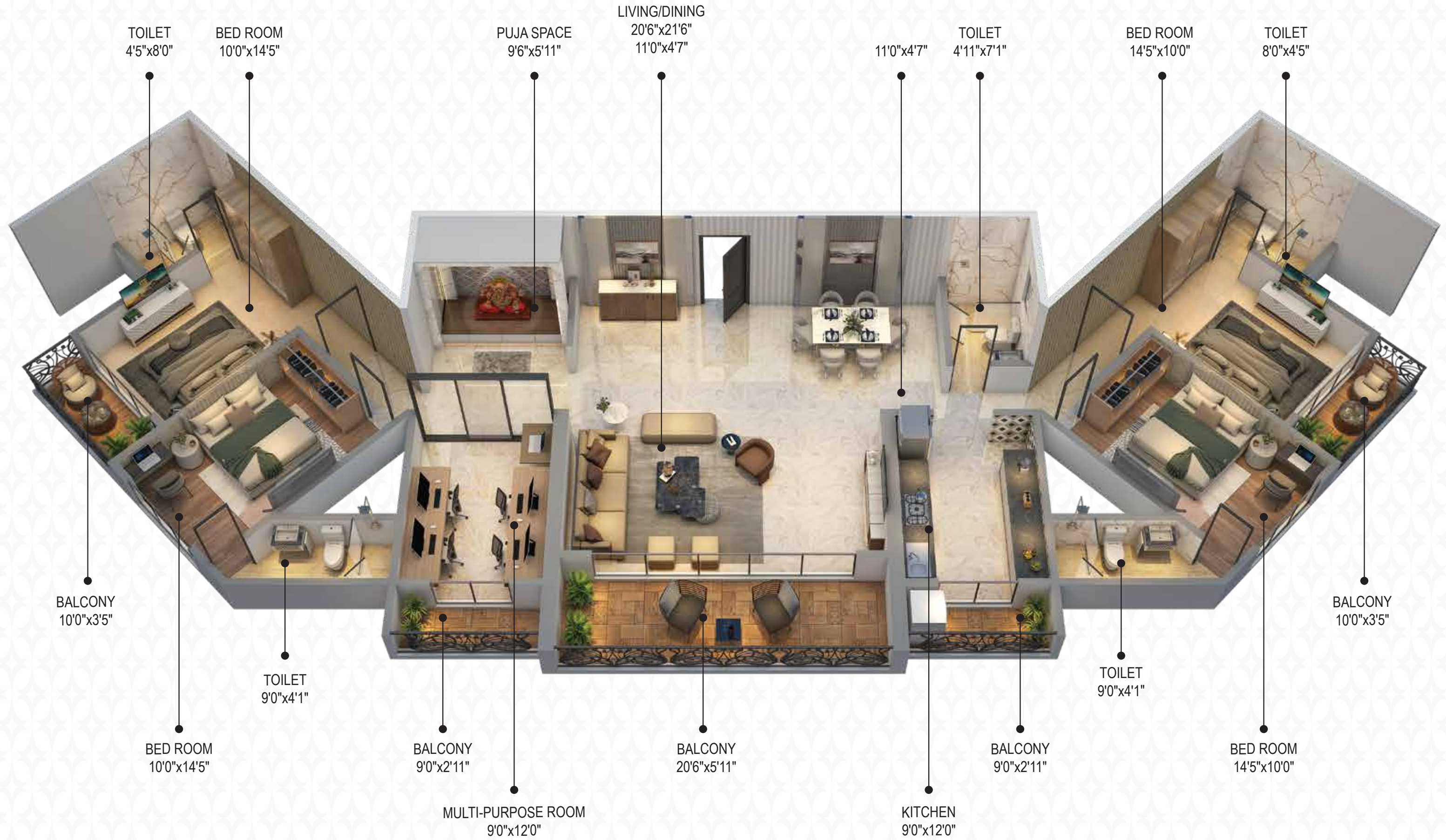
2 BHK ISOMETRIC



3 BHK ISOMETRIC



4 BHK ISOMETRIC





EXPERIENCE THE #EMIRATILIFE AT DREAM ATLANTIS

AT A GLANCE

PROJECT HALLMARKS

- 45-Storey High-Rise Tower
- 2, 3 & 4 BHK Residences with Sundecks Biggest Carpet Area & Sundecks in Kalyan
- Vaastu Compliant Planning
- Lifestyle Indulgences on 7th & 20th Floor
- Lavish Car Park for Each Flat
- Earthquake Resistant RCC Structure
- 7 High-speed Elevators

LOBBY HIGHPOINTS

- Double-height Entrance
- Reception Desk
- Guest Lounge

AMENITIES ON 7TH FLOOR

- Swimming Pool
- Kids Pool
- Basketball Court
- Kids Play Area
- Multi-Purpose Hall
- Banquet Hall
- Spa, Sauna, Steam & Jacuzzi
- Crèche
- Café Lounge with Juice Bar
- Gazebo / Walkway
- Indoor Games
- Gymnasium

AMENITIES ON 20TH FLOOR

- Boxing Ring
- Yoga, Meditation & Aerobic Room
- Pet Park
- Guest Room
- Music Room
- Zumba Space
- Library / Work from home Space
- Café Lounge with Juice Bar
- Mini Theatre
- Study Room
- Refuge Area

INTERNAL FEATURES

- Italian Tiles
- Jaguar/Equivalent Branded Fitting
- Branded Sliding Windows
- Fire Resistance Branded Electric Wiring
- Wash Basins with Counter Top
- Anti-Skid Tiles in Bathroom & Balcony

AN ADDRESS POISED
FOR BUSINESS

Excellence

- PREMIUM RETAIL & OFFICE SPACES



A POWERHOUSE
OF GROWTH AND
Opportunity

- GRAND DOUBLE-HEIGHT AIR-CONDITIONED ENTRANCE LOBBY
- TWO HIGH-SPEED AUTOMATIC ELEVATORS
- 14.5 FT. FLOOR-TO-CEILING HEIGHT FOR SHOPS
- 12 FT. FLOOR-TO-CEILING HEIGHT FOR OFFICES
- 24X7 SECURITY WITH COMMON AREA SURVEILLANCE



A LANDMARK POISED TO
DELIVER KALYAN ITS

Eminence

- AN ADDRESS SURROUNDED BY THE BEST OF
LIFESTYLE CONVENIENCES & COMFORTS



LOCATION MAP



AVALON TO ATLANTIS IS JUST 200 METERS AWAY

A LOCATION POISED FOR THE FUTURE

KALYAN IS AMONGST OLDEST PORT CITIES OF INDIA AND THE YOUNGEST HUB OF UPCOMING RESIDENTIAL DEVELOPMENT IN MUMBAI METROPOLITAN REGION. NOW, IT IS ALL SET TO WELCOME WORLD'S DISTINCT & AFFLUENT LIFESTYLE WITH DREAM ATLANTIS. IT IS POISED TO BE NUCLEUS OF GREAT CONVENIENCES AND COMFORTS.

- 
KALYAN RLY. STN. - 2 KMS | SHAHAD RLY. STN. - 2 KMS
KALYAN-SHIL ROAD - 4.5 KMS
- 
SCHOOLS & COLLEGES
IN RANGE OF 1 KM
- 
MEDICAL STORES AT
DISTANCE OF 400 MTR
- 
HOSPITALS IN
RANGE OF 1 KM
- 
MCDONALD'S & DOMINO'S
IN RANGE OF 1.5 KM
- 
RETAIL MARTS IN
RANGE OF 1.5 KM

BUILDING LIFE STORIES REACHING A MILLION *Hearts*

ABOUT GROUP

EVERY STRUCTURE WE BUILD, TELLS A LIFE STORY AND A HEARTFELT JOURNEY, TRANSFORMING THE DREAMS OF OUR CUSTOMERS INTO REALITY. AT DREAM DEVELOPERS, WE DON'T JUST CONSTRUCT BUILDINGS; WE CRAFT THE NEW NARRATIVES OF LUXURY THAT ECHOES THE DREAMS OF MILLIONS IN THE CITY. OUR EVERY LANDMARK IS A SAGA OF OUR UNWAVERING VISION THAT STANDS TALL ACROSS THE SKYLINES OF NAVI MUMBAI AND MMR.

IN A BRIEF SPAN, DREAM DEVELOPERS HAS EARNED THE TRUST OF PARTNERS, ASSOCIATES, AND CUSTOMERS WITH OUR DYNAMIC APPROACH TO UNPARALLELED CREATIONS. COMMITTED TO DELIVERING WORLD-CLASS LANDMARKS ON TIME, WE STAND AS A RELIABLE GROUP CRAFTING EXTRAORDINARY LIFESTYLE OF QUALITY AND INNOVATION TO LIVE, WORK AND INVEST FOR ALL.



HALLMARKS OF EXCELLENCE

15+ YEARS OF TRUST & QUALITY

20 LAKH + SQ. FT. OF MORTGAGE-FREE DEVELOPMENTS

17+ LANDMARKS DELIVERED

8+ ONGOING RESIDENTIAL & COMMERCIAL PROJECTS

11+ UPCOMING LUXURY LANDMARKS



DREAM DIGIT
Thane Belapur Road (Pawane)
26-Storeyed Commercial Landmark



DREAM IKON
(Opp. D.Y. Patil Stadium) Nerul
30-Storeyed Commercial Landmark



DREAM HILLS
Kharghar, Sector 36
33-Storeyed Residential Landmark



DREAM AVALON
Khadakpada, Kalyan (W)
34-Storeyed Residential Landmark



DREAM AVENUE
Khadakpada, Kalyan (W)
22-Storeyed Residential Landmark



DREAM MEADOWS
Upper Kharghar
41-Storeyed Residential Landmark



DREAM GATEWAY
Opp. Turbhe Station
Business Park



DREAM DEVELOPERS®

 **+91 704 506 1800** | www.dreamdevelopers.in

Site Add.: Vibgyor School Rd., Gandhar Nagar, Khadakpada, Kalyan, Maharashtra - 421 301.

Corp. Off.: Plot No. C/16/1, Thane Belapur Rd., TTC Industrial Area, MIDC Navi Mumbai - 400 706.

MahaRERA No. P51700080835 www.maharera.mahaonline.gov.in

Disclaimer: This plan, specifications, images, furniture layout and other details herein are only indicative and the developer reserves the right to change any or all of these in the interest of the development as per applicable rules & regulations. This contains artistic impressions and stock images for illustrative purpose and no warranty is expressly or impliedly given that the completed development will comply in any degree with such artist's impression as depicted. The information provided in this leaflet is intended solely for internal circulation and not for commercial use.

