

Phone Number: 0000 000 000

RERA Registered: Karnataka RERA Registration Numbers:
PARKWEST - PINE - TOWER 9 - PRM/KA/RERA/1251/310/PR/210216/003899
PARKWEST - OAK - TOWER 10 - PRM/KA/RERA/1251/310/PR/210216/003900
Maple Tower - PRM/KA/RERA/1251/310/PR/171015/000277
Sapphire Tower - PRM/KA/RERA/1251/310/PR/171015/000284
Magnolia Tower - PRM/KA/RERA/1251/310/PR/180222/002637
Mahogany Tower - PRM/KA/RERA/1251/310/PR/181204/002196
For more details, visit: <https://rera.karnataka.gov.in>

Shapoorji Pallonji
PARKWEST 2.0

Binnypet, Bengaluru

**TRANSFORMING
BINNYPET**



<https://parkwest.shapoorjirealestate.com> | Site address: Parkwest, No. 1/1, Hosakere Road Ward No. 121, Binnyfields Binnypet, Bengaluru

ಪಾರ್ಕ್ ವೆಸ್ಟ್ 2.0



Note: The project development and marketing is managed by Shapoorji Pallonji Development Managers Pvt. Ltd. (RERA Karnataka Registration Number PRM/KA/RERA/1251/309/AG/201012/002060) in collaboration with the promoter, Relationship Properties Pvt. Ltd. This project's Maple, Sapphire and Magnolia towers are financed by L&T Infrastructure Finance Company Limited and have been charged / mortgaged in favour of its securities trustee namely IDBI Trusteeship Services Ltd. The NOC/permission of the mortgagee / security trustee will be provided for sale of flats/units, if required. This material does not constitute an offer and / or contract of any type. Any prospective sale shall be governed by the terms and Agreement for Sale to be entered into between the parties. Before making a decision to purchase, customers are requested to independently, either directly or through customers' legal/financial advisors, thoroughly verify all details/documents pertaining to the project. Images are digitally enhanced, unless otherwise mentioned. No photos have been shot at site unless mentioned otherwise. Products, features, furniture, light fittings, false ceiling, wall covering etc., shown in this brochure are illustrations and for representation only and are not part of the flat to be sold to the customer. The colours, shades of walls, tiles etc., shown in the images are for the purpose of representation only and may vary upon actual construction. Other T&Cs apply. This project is a part of the proposed larger development and the entire development will be carried out in a phased manner by the promoter.

Binnypet

AND BEYOND

Historically, in the 1800s, Binnypet dominated the garment industry, led by the famed Binny Mills. Being the corner stone for creating jobs and sustaining the economic growth of Bengaluru, it paved the way for transforming the city into the urban metropolis we know and love today. With Parkwest 2.0, Shapoorji Pallonji aims to revive the legacy of Binnypet, by transforming it into a prime residential location of Bengaluru. It offers lush green landscape, modern architecture and state-of-the-art amenities, sewed into an ethos that is second to none.

ABOUT

Parkwest

AN URBAN OASIS OF TRUE LUXURY

Nestled in the heart of Bengaluru, this ~46-acre (1,86,155 sq. m.) marvel is sure to satiate your desire for a space, which lets you escape from the fast-paced, bustling city life and step into a lifestyle replete with abundant open spaces, multiple avenues of delight, luxurious clubhouses and a lot more.



TRANSFORMING

Legacy Tower

The power of tradition and the forces of the past, work to shape the future. Even as physical developments change appearances, the identity remains the same, memorialising those who set the groundwork. All of Parkwest's progressive design ethos and cosmopolitan comforts, will seamlessly merge with the ethos of Bengaluru, keeping the essence of Bengaluru and Binnypet intact. Like the 100 year old legacy tower that Shapoorji Pallonji will help restore. The past is the truest measure of how far we've come.



ARTIST'S IMPRESSION



STOCK IMAGE

TRANSFORMING

Lives

In Binnypet, families that once subsisted on the mill business have now diverged into new, more modern professions. Parkwest 2.0 will change what homes should be; spaces tailored for the needs and aspirations of the individual. They'll be sanctuaries, which let families reclaim the lost time, through stimulating interiors and exciting exteriors.

TRANSFORMING

Lifestyle

As the professional lives of Binnypet's residents change, so do their private lives. The rudimentary pastimes of a slower, more relaxed life has given way to focused pursuit of hobbies and activities that help people recharge and fit in tighter schedules. But more, importantly, these lifestyle preferences must find a space in your home. They still remained hopes rather than expectations, often a distant aspiration. Parkwest 2.0 will transform this skewed relationship between people and their preferences, turning lifestyle into a montage of sophisticated choices, where revelry and relaxation come in all shapes and sizes.



STOCK IMAGE



STOCK IMAGE

TRANSFORMING

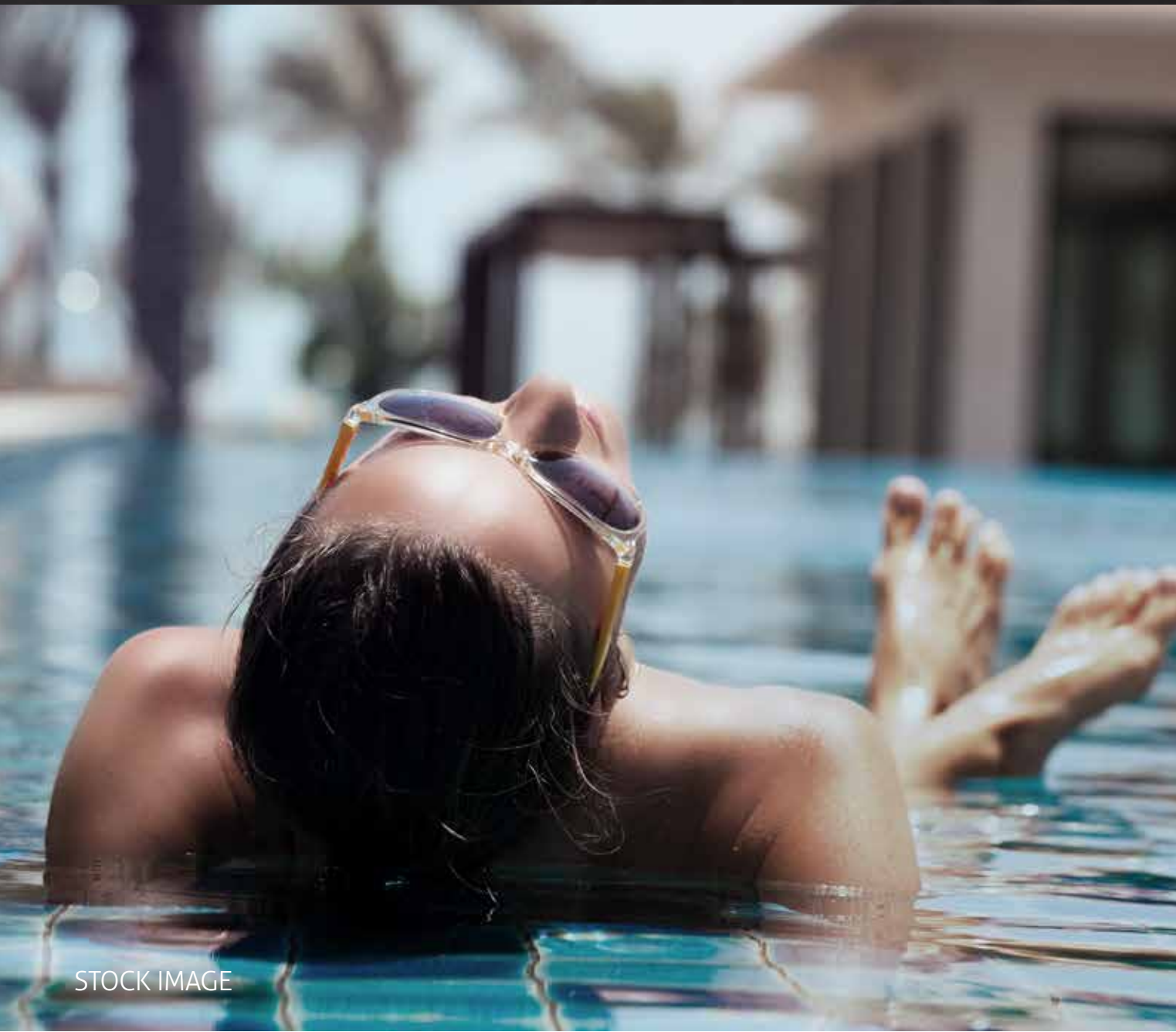
Childhood

The digital world has limited the horizons of children, within the bounds of a screen. Perhaps it's because the all-purpose open spaces, where children learned their most important lessons, are gone. Sometimes, transformation is about a return to the essence. That's how Parkwest 2.0 will transform childhood; by returning it to the peals of playground laughter, to the flights of imaginations in tree houses, and to the joy of unprecedented experiences.

TRANSFORMING

Leisure

With smaller families and lesser time to spare, leisure is a physical as well as an emotional outlet. They are essentials that help relieve the stress and momentarily divert us from the overwhelming personal routines and responsibilities. Though the reasons may be the same, we approach leisure afresh each time, expecting a more fulfilling experience. At Parkwest 2.0, we are leading the change, by curating richer experiences for the discerning.



STOCK IMAGE



STOCK IMAGE

TRANSFORMING

Convenience

To expect the internet generation to be satisfied with an experience that's anything less than seamless, is to ignore evolution. Their requirements and preferences too, have become more varied, whether it's easily accessible medical care, world-class civic amenities, or home-delivered services. Parkwest 2.0 is being designed for consumers who value time and comfort. We understand this transformation in expectations, and at Parkwest 2.0, we are preparing to deliver.

Born

TO TRANSFORM

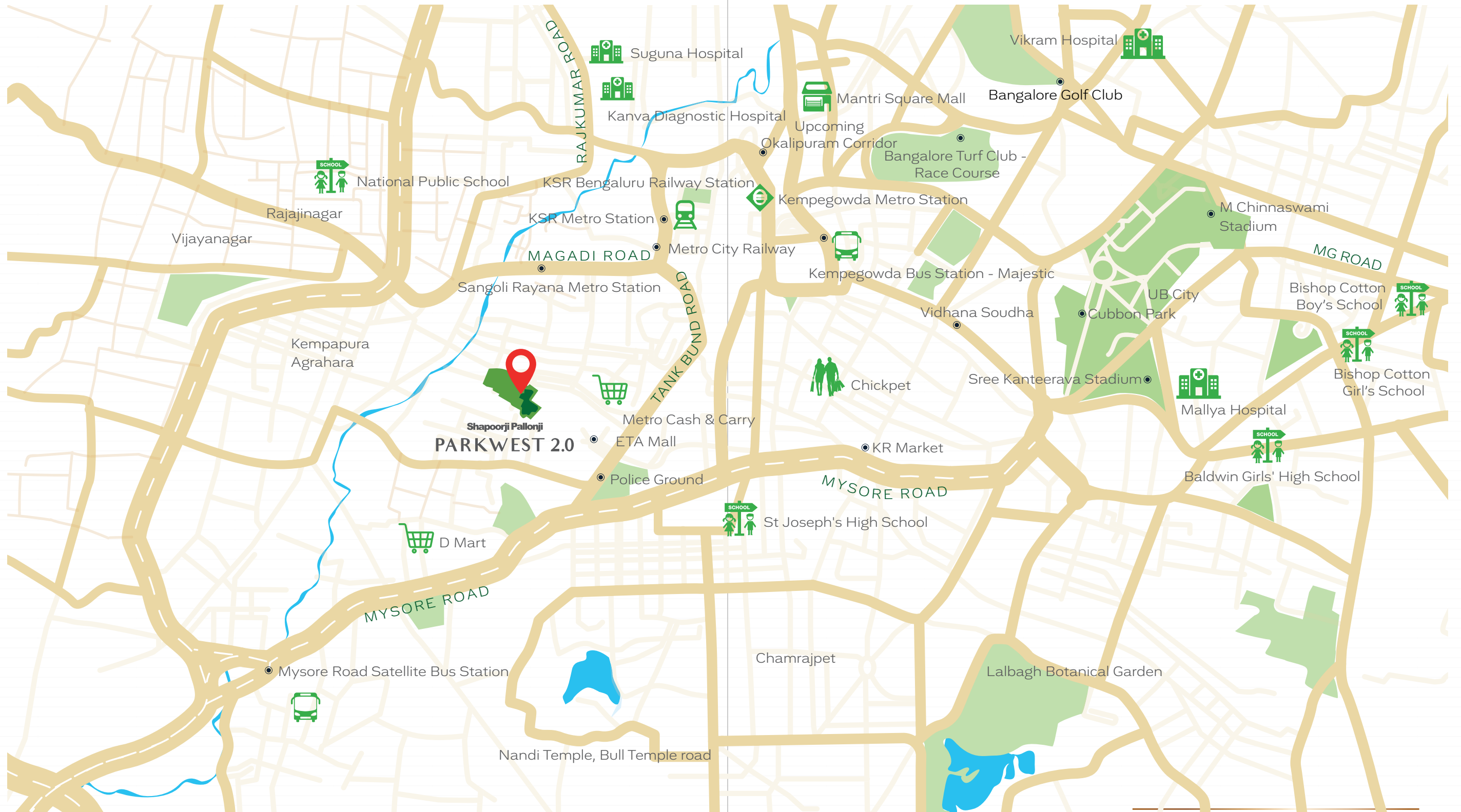
Parkwest 2.0 envisions to restore the glory of the heritage site of Binny Mills, by transforming it into an integrated township, with an aim to promote community living harmonised with nature and above all, providing a superior way of life.



ARTIST'S IMPRESSION

CONVENIENCES

Unrestrained



Map not to scale, for indicative purpose only

LIVE AT THE PIVOT OF

Bengaluru's

SOCIO-ECONOMIC LIFE

As history suggests, Binnypet laid the foundation for the socio-economic growth in Bengaluru. Now with Parkwest 2.0 coming up, be a part of history, rewritten. Enhance your day-to-day living by experiencing the best the city has to offer, with seamless access to any corner of Bengaluru.

Sri Chamarajendra Park
~ 4.8 km

World Trade Centre
~ 6.9 km

Golf Course
~ 6.2 km

City Railway Station
~ 2 km

Kempegowda Bus Stand
~ 3 km

Iskcon Temple
~ 6.9 km

KR Flower Market
~ 2.2 km

UB City Mall
~ 6.3 km

MG Road
~ 7.6 km

ETA Mall
~ 0.3 km

Lalbagh Botanical Garden
~ 4 km

Bull Temple
~ 3.3 km

Chickpet Textile Centre
~ 2.5 km

Gandhi Bazaar
~ 3.2 km

Experience

THE THRILL OF A THRIVING CITY LIFE



World-class Medical Amenities:

- ◆ Padma Deviah Hospital ~ 1.4 km
- ◆ Kanva Diagnostics ~ 3.6 km
- ◆ Suguna Hospital ~ 3.7 km
- ◆ Apollo Hospital ~ 4.8 km
- ◆ Columbia Asia Hospital ~ 7.0 km



Enhanced Connectivity:

- ◆ Bus Stop ~ 0.2 km
- ◆ Metro Station ~ 2.1 km
- ◆ Majestic Bus Stand ~ 2.9 km
- ◆ Mysore Road Satellite Bus Stand ~ 2.4 km



Prestigious Educational Institutes:

- ◆ New Presidency High School ~ 1.9 km
- ◆ St. Joseph Boys School ~ 6.3 km
- ◆ Venkat International School ~ 3.7 km
- ◆ KLE Education Society ~ 4.5 km
- ◆ Sheshadripuram College ~ 2.6 km
- ◆ MES College ~ 6.0 km
- ◆ Brigade School ~ 6.7 km



Enthralling Entertainment Choices:

- ◆ Metro Cash & Carry ~ 0.30 km
- ◆ Decathlon ~ 0.30 km
- ◆ ETA Mall ~ 0.31 km
- ◆ Gopalan Legacy Mall ~ 1.50 km
- ◆ Mantri Square Mall ~ 4.30 km
- ◆ Orion Mall ~ 6.90 km

MASTER

LAYOUT PLAN



1. MAIN ENTRY
2. TOWER COURTYARD
3. DROP-OFF AREA
4. ENTRY PLAZA
5. FOREST AVENUE
6. THE MEADOW
7. SUNKEN COURTYARD
8. LEGACY TOWER
9. AMENITY CENTER-2
10. INFINITY EDGE POOL

11. WATERFALL
12. GRASSLAND PROMENADE
13. FIRE DRIVEWAY (FUTURE DEVELOPMENT)
14. OPEN FUNCTION LAWN
15. THEMED GARDEN (FUTURE DEVELOPMENT)
16. ADVENTURE PLAY
17. AMPHITHEATER
18. KID'S PLAY AREA
19. CRICKET PITCH
20. MULTI - PURPOSE SPORTS COURT

21. PANORAMIC VIEWING DECK
22. PET PARK
23. WALKING TRAIL
24. MOUND PLAY
25. BUS LAY-BY
26. ACTIVITY PAVILION
27. TOT'S / KINETIC PLAYGROUND
28. TREE HOUSE
29. OVERLOOKING LOUNGE
30. TENNIS COURTS

31. DECK
32. WADING POOL
33. REFLEXOLOGY PATHWAY
34. SENIOR CITIZENS' SQUARE
35. JOGGING TRACK
36. PARK
37. AEROBICS POD
38. BASKETBALL COURT
39. SWIMMING POOL
40. CLUB UNO

41. HALF BASKETBALL COURT
42. TREE RETENTION COURTYARD
43. YOUTH ACTIVITY CORNER
44. SKATING RINK

Towering

SYMBOL OF DELIGHT

An address of unimaginable luxuries and unforgettable experiences.



ARTIST'S IMPRESSION



Splendour

wherever you see

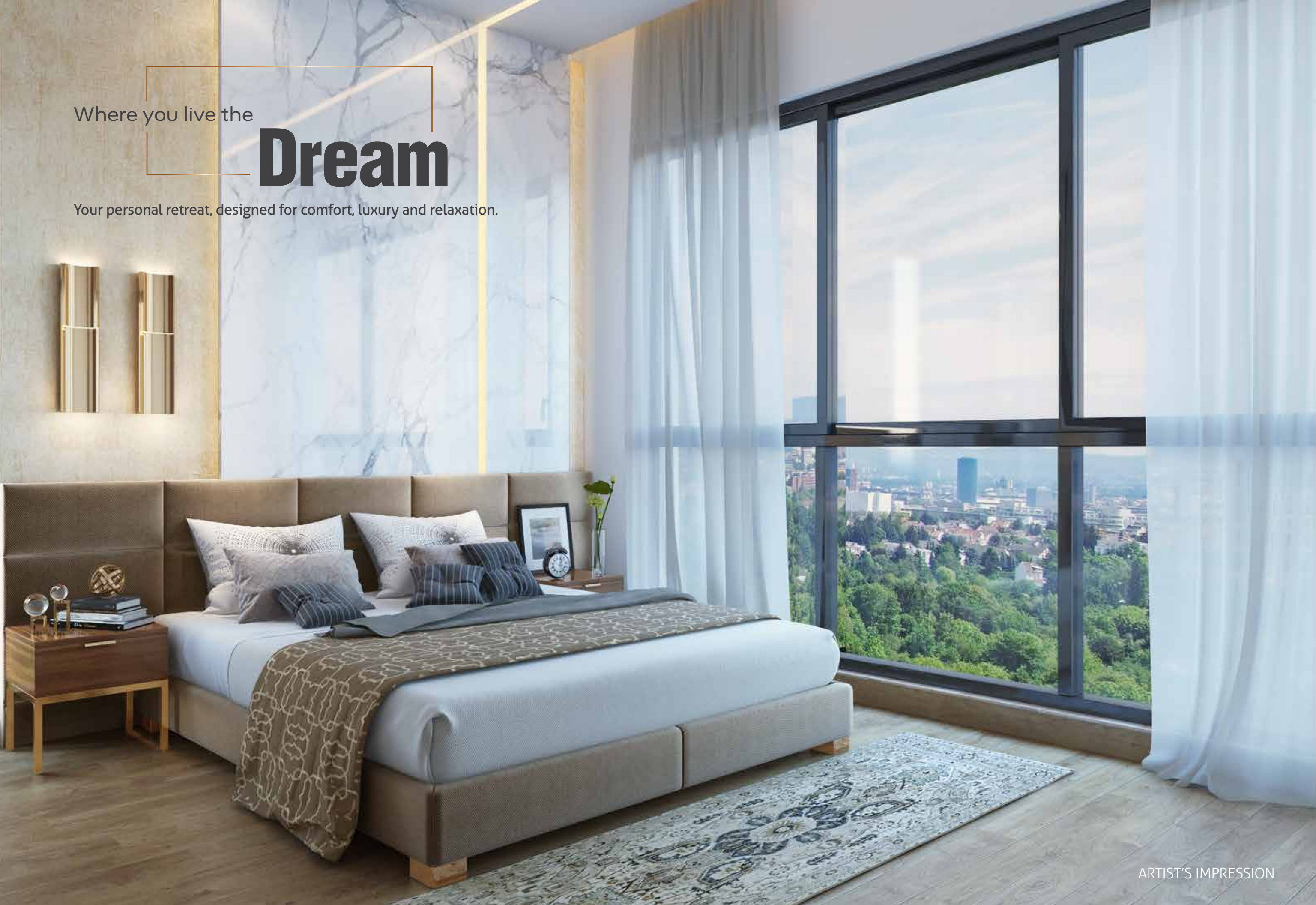
A perfect blend of functionality, brilliant design and abundant enthralling activities.

ARTIST'S IMPRESSION

Where you live the

Dream

Your personal retreat, designed for comfort, luxury and relaxation.





Perfect

— SPACE FOR YOUNG AND OLD ALIKE

An Alfresco zone with the sound of cascading water in the background



Sports

lover's paradise

Multipurpose Court to challenge your friends to a set of games

~2,300 sq. m. of

leisure

A brand new clubhouse for the distinguished few



LANDMARK PROJECTS OF

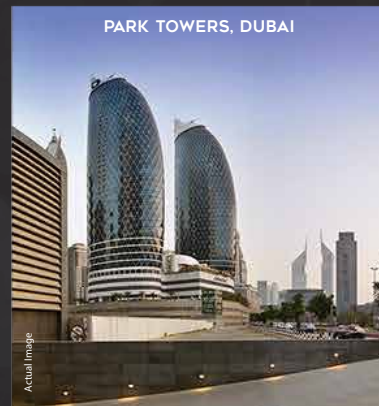
Shapoorji Pallonji Group



MAYDAN RACECOURSE ROAD,
DUBAI



FAIRMONT BAB AL BAHR, ABU DHABI



PARK TOWERS, DUBAI



PALACE OF THE SULTAN OF OMAN



PENINSULA BUSINESS PARK, MUMBAI



TRIDENT, MUMBAI

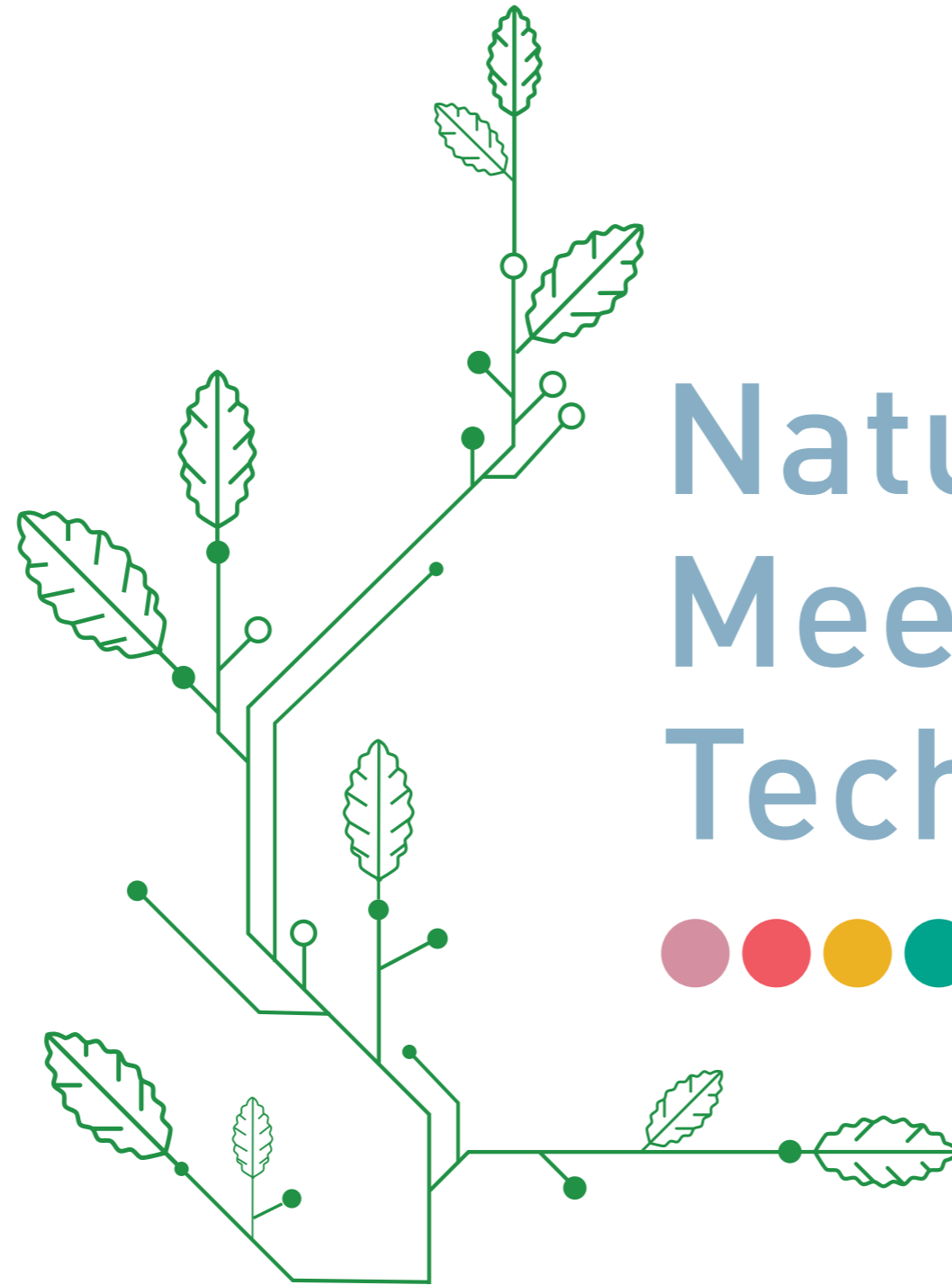
A LEGACY OF OVER

150 years,

SPREAD ACROSS THE GLOBE

INTEGRITY | HONESTY | TRANSPARENCY

- Creating landmarks for over 150 years
- Global presence in over 60 countries
- 16 group companies over 220 mn. sq. ft. (20.4 mn. sq. m.) constructed in India
- A strong employee base of over 69,000 people from 40+ nationalities



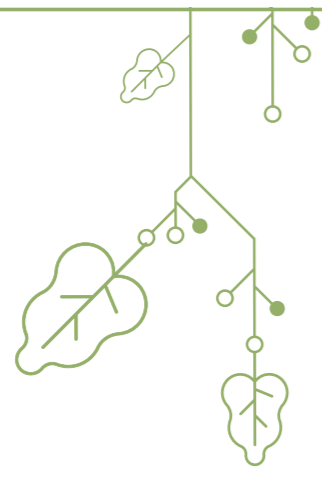
Nature Meets Technology.



Shapoorji Pallonji

PARKWEST 2.0

Binnypet, Bengaluru

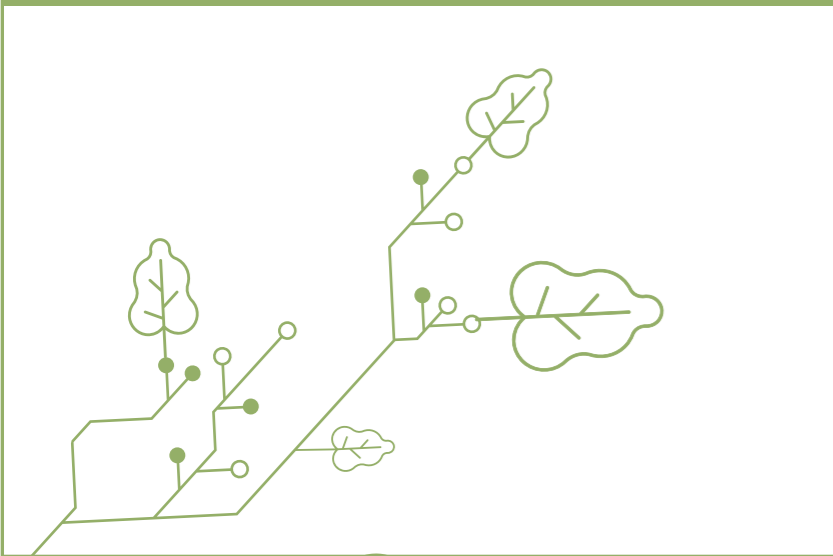


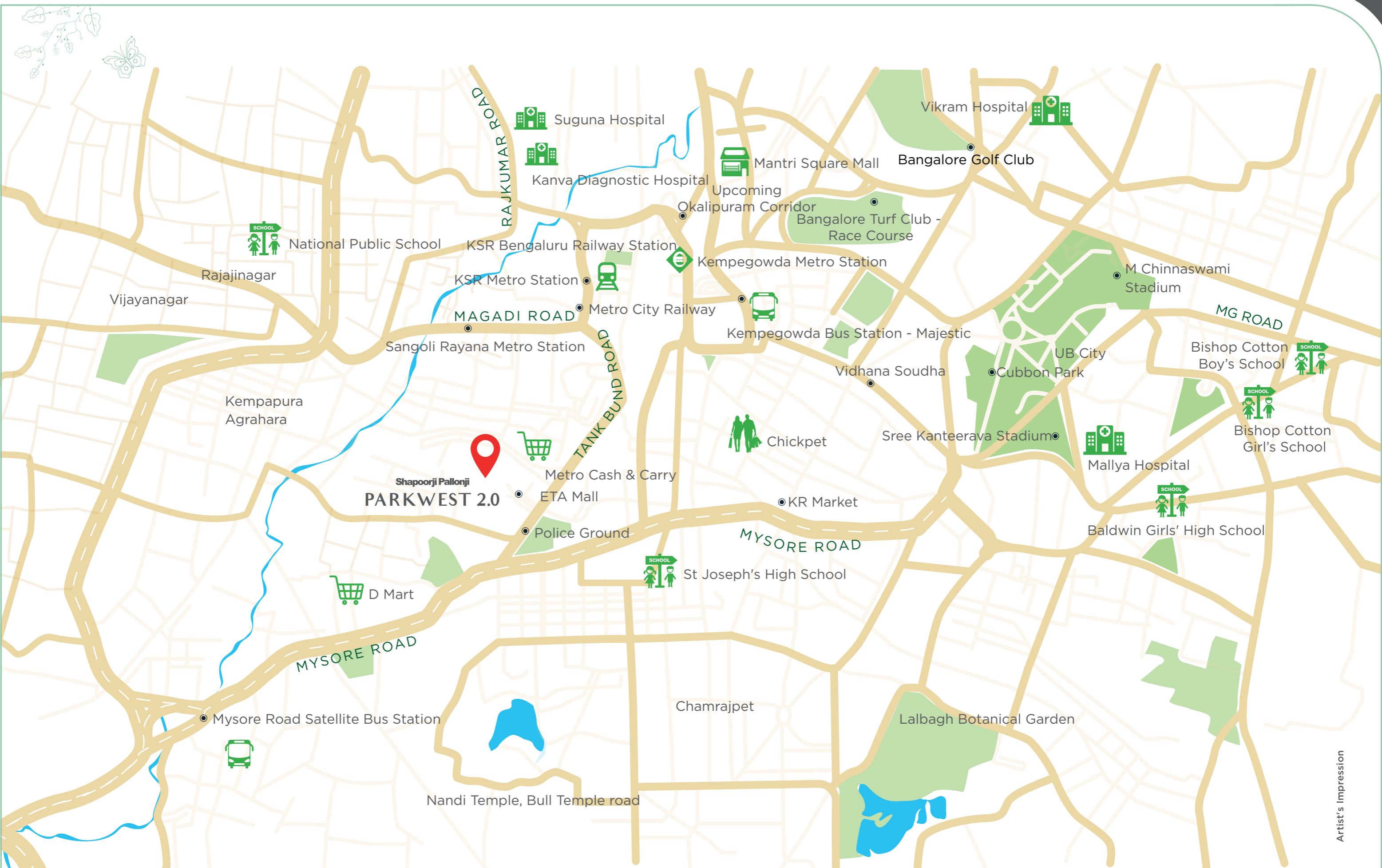
Bengaluru – a smart city blooming with promise

Known as the Garden City with a rich heritage, Bengaluru has transformed into an IT hub. Thereby becoming the Silicon Valley of India. Binnypet was home to a thriving textile mill in the 1800's. Today, Parkwest has not only transformed Binnypet with its cluster of majestic towers but is also well-connected to everything. Come enjoy the perks of living in the heart of the city.



Stock Image



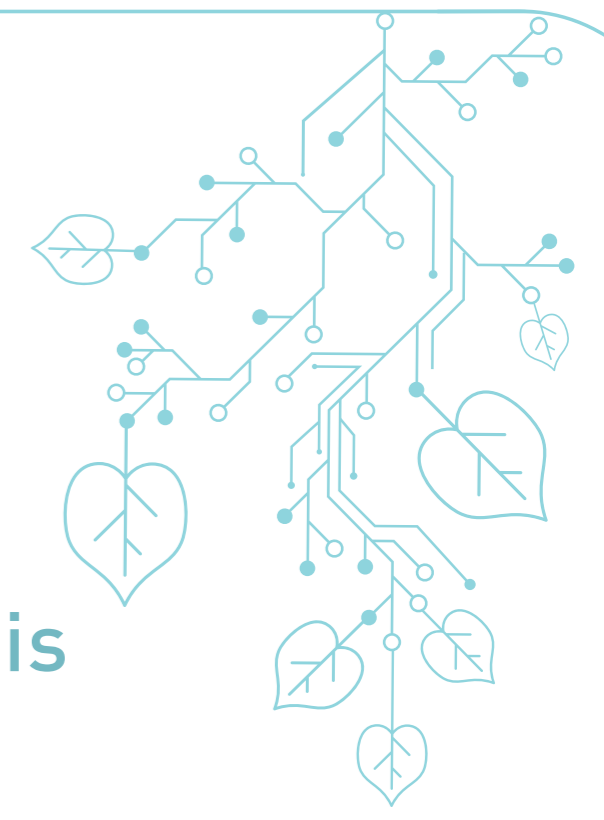


Note: Map not to scale, for indicative purpose only

- | | | | | | | |
|------------------------------|----------------------|----------------------------|--------------------------------|--------------------------------|----------------------|--------------------------|
| -3 km Kempegowda Bus Station | -7.6 km MG Road | -3.3 km Bull Temple | -2.5 km Chicpet Textile Centre | -4 km Lalbagh Botanical Garden | -6.3 km UB City Mall | -2.2 km KR Flower Market |
| -2 km City Railway Station | -6.9 km Iskon Temple | -6.9 km World Trade Centre | -4.8 km Sri Chamarajendra Park | -0.3 km ETA Mall | -6.2 km Golf Course | -3.3 km Gandhi Bazaar |

Artist's Impression





Your home is in the most sought-after location in town

- 3 km Kempegowda Bus Station
- 2 km City Railway Station
- 7.6 km MG Road
- 6.9 km Iskcon Temple
- 3.3 km Bull Temple
- 6.9 km World Trade Centre
- 2.5 km Chicpet Textile Centre
- 4.8 km Sri Chamarajendra Park
- 4 km Lalbagh Botanical Garden
- 0.3 km ETA Mall
- 6.3 km UB City Mall
- 6.2 km Golf Course
- 2.2 km KR Flower Market
- 3.3 km Gandhi Bazaar

Educational Institutions

- 1.9 km New Presidency High School
- 2.6 km Sheshadripuram College
- 3.7 km Venkat International School
- 6.0 km MES College
- 6.3 km St. Joseph Boys School
- 6.7 km Brigade School

Entertainment Hubs

- 0.30 km Metro Cash & Carry
- 0.30 km Decathlon
- 0.31 km ETA Mall
- 2.50 km Lulu Hypermarket
- 4.30 km Mantri Square Mall
- 6.90 km Orion Mall

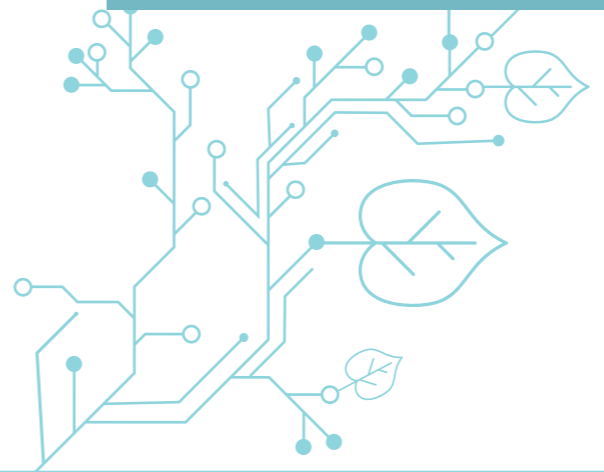
Medical Facilities

- 1.4 km Padma Deviah Hospital
- 3.6 km Kanva Diagnostics
- 3.7 km Suguna Hospital
- 4.8 km Apollo Hospital
- 7.0 km Columbia Asia Hospital

Enhanced Connectivity

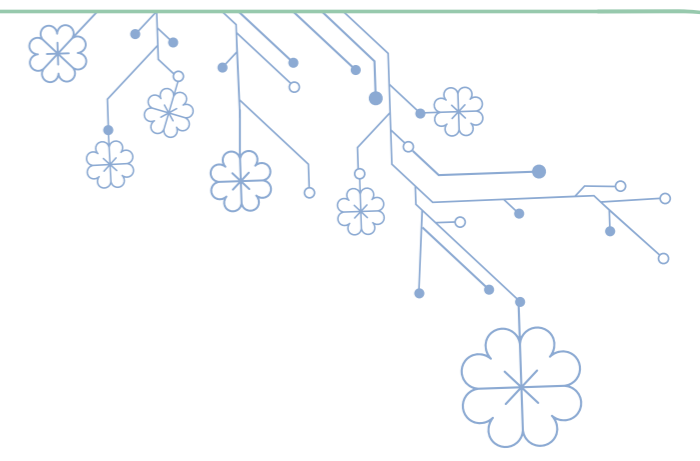
- 0.2 km Bus Stop
- 2.1 km Metro Station
- 2.4 km Mysore Road Satellite Bus Stand
- 2.9 km Majestic Bus Stand

Binnypet is centrally situated and has locational advantages to various parts of the city. There's plenty to do right here at Parkwest. But for the social butterflies who love stepping out, there are shopping malls, movie theatres, restaurants and a golf course in the vicinity. From good schools to hospitals and places of worship, Parkwest 2.0 enjoys proximity to a great social infrastructure. Here's a ready reckoner to all the neighbouring conveniences.



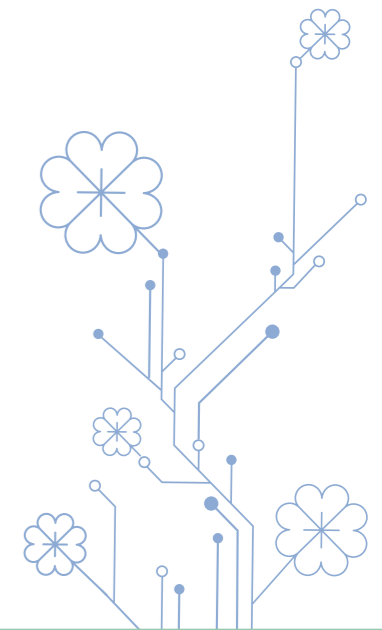


Artist's Impression



LAUNCHING

TOWER
CEDAR
at Parkwest 2.0



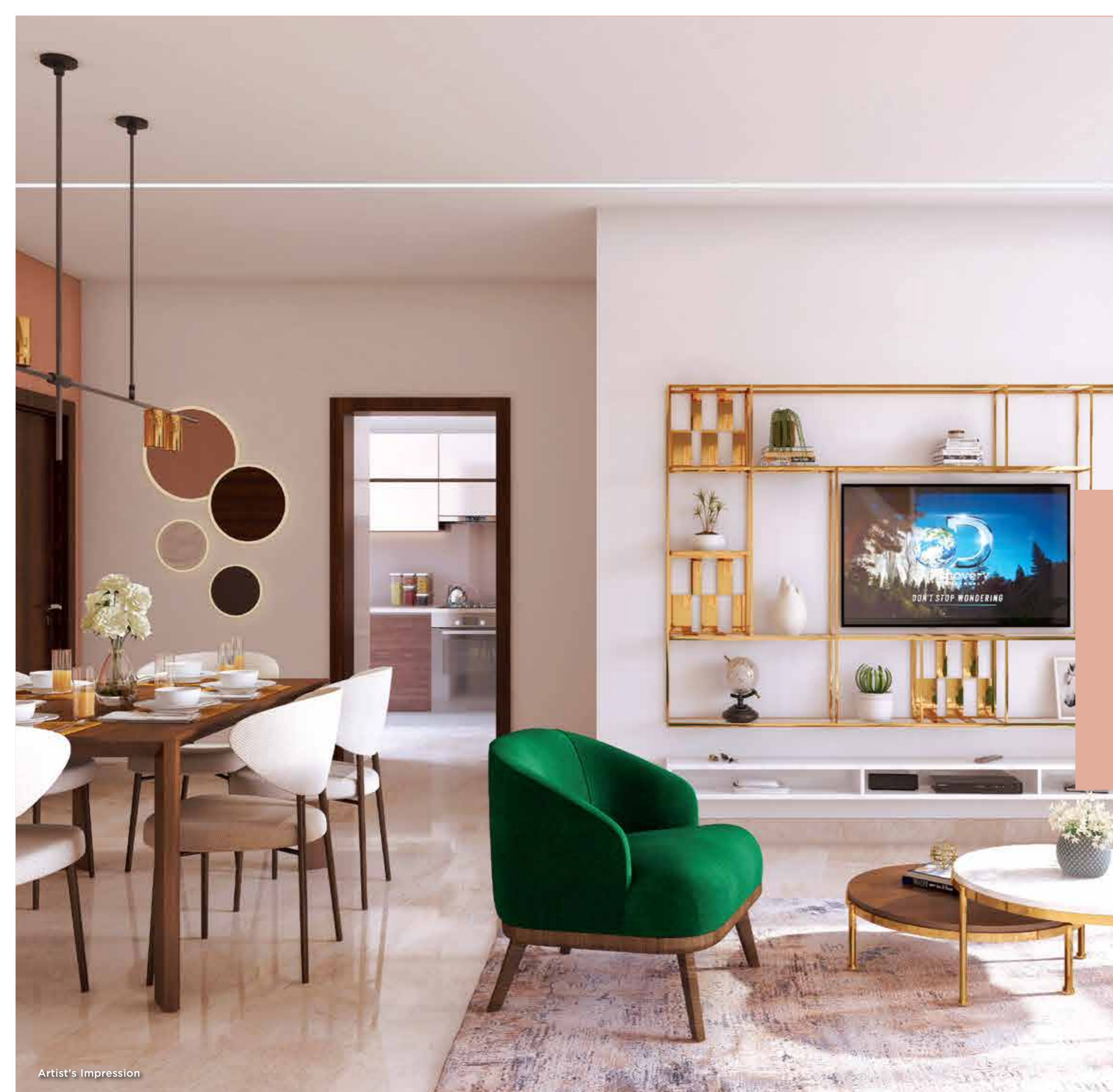


A smart tower that exudes opulence

Tower Cedar is an architectural marvel. This meticulously planned majestic tower offers stunning views of the city and utmost privacy. Its structure rises upward into the sky and its wide open glass windows allow natural sunlight and fresh air into your home with abundance. At night, this glittering high-rise is a visual treat. Truly, creating a better world both inside and outside.



Artist's Impression

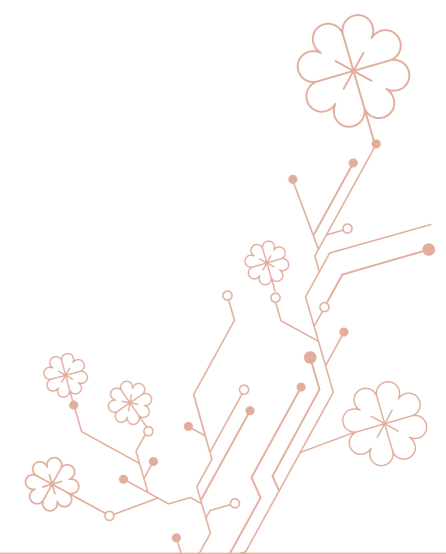


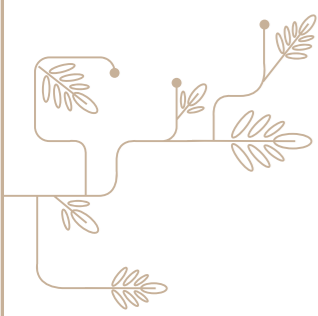
Artist's Impression



Impeccably designed spaces that evoke a sense of peace and privacy

Waking up every morning at Parkwest is truly sublime. Enjoy your front view seat to breath-taking vistas of the city. These spacious residences have plush interiors and home automation solutions to keep you comfortable in utmost luxury. The openness, fresh air and natural sunlight makes living here blissful and regal.





Be a part of a universe where nature and technology become your world

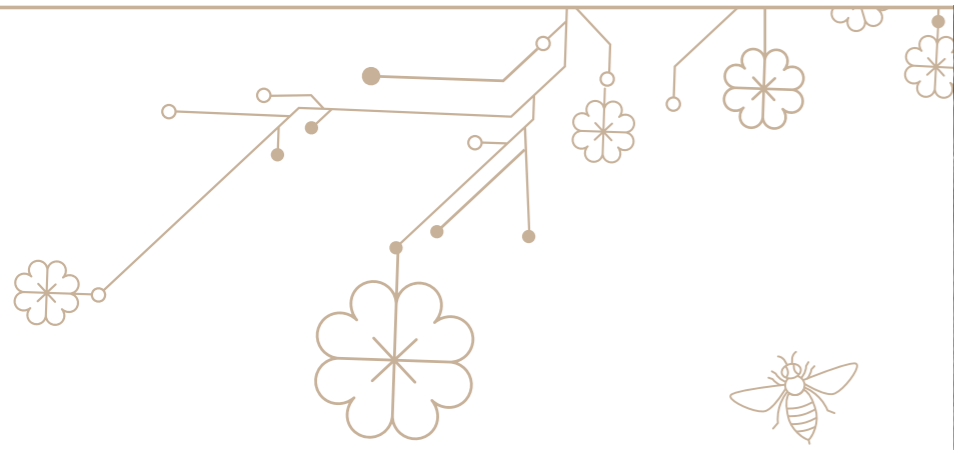
In today's world, technology is a necessity and a way of life. While nature on the other hand is a rare blessing in a concrete jungle. But what if there was a way to combine the goodness of nature's bounty and smart technology in order to experience a beautiful life? Come, discover luxury residences in the heart of Bengaluru, those are well-connected and surrounded by lush greenery. Spacious homes where technology and nature are balanced just for your convenience. Thereby, offering you the best of both worlds to live a grand lifestyle in complete harmony.

This is tower Cedar at Shapoorji Pallonji Parkwest 2.0
Welcome to a smart way of living...



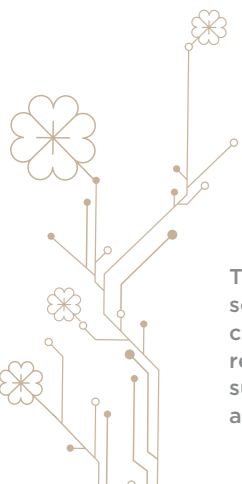
The promoter is not the manufacturer/supplier of the security & home automation products and electric vehicle charging systems mentioned herein and makes no representation in relation to the same. These products are subject to standard warranties as may be provided by the applicable manufacturer/supplier.

Artist's Impression



A residence where peace of mind is complimentary

Security is vital for every home today. Living in an IT hub demands the best technology at your fingertips. At tower Cedar in Shapoorji Pallonji Parkwest 2.0, every residence is fitted with the fine technology and advanced security system. These world-class home automation solutions make your home a safe and secure haven for you and your family.



The promoter is not the manufacturer/supplier of the security & home automation products and electric vehicle charging systems mentioned herein and makes no representation in relation to the same. These products are subject to standard warranties as may be provided by the applicable manufacturer/supplier.



Artist's Impression

Security Solutions:

Smart Door Lock

Get peace of mind no matter where you are with a digitised door lock. The Smart Door Lock offers security and convenience. The main door of your home can be controlled using a number keypad, RFID card, biometric data, a manual key and also from your smartphone via an app.

Smart Video Door Phone

Keep your home safe and secure with a digitised door phone entry system. The smart door phone keeps you informed at all times if someone is outside your door. The two-way communication feature allows you to make or answer video calls from any place on your smart phone whenever a visitor rings your doorbell.

Motion Alarm

Ensure the safety of your loved ones with an advanced motion sensor of the doorphone camera. This smart home alarm system provides a 24x7 live feed and alerts you via the app or video door phone whenever someone is lurking outside your doorstep.

Panic Alarm

A Wireless Panic Button is a useful device especially for seeking help in an emergency. All you have to do is push the panic button to send a signal to the alarm panel and your phone. It will instantly connect you to the people you have listed as your emergency contacts so they can come to your aid.

Home Automation Solutions

Smart Control for AC

Control your air conditioner through your smart phone anytime, anywhere. From switching the AC on or off to adjusting and programming the temperature through an app, this smart home solution helps to reduce energy consumption and makes your life smarter, smoother and better.

Smart Control for TV

Get access to your TV through your smart phone. Switch it on or off, change channels, increase or decrease the volume, at your fingertips. This home automation solution truly makes life more enjoyable for you.

Smart Energy Monitoring

Monitor the electricity consumption of all major appliances at your home with the energy monitoring system. Apart from giving you your power consumption figures, it sends you a notification on your smart phone in case any appliance is consuming more power than usual, suggesting repair or replacement of the appliance.

Smart Water Purifier

Clean and pure drinking water is a necessity. This smart water purifier tracks the water purity levels and ensures safe drinking water for you and your family. The real time TDS monitoring feature sends a notification to your smart phone to schedule timely maintenance.

Electric Vehicle Charger

No more hassles of hunting for an electric charger to charge your car or bike. Enjoy the perks of charging your electric vehicle effortlessly from the comfort of your home thanks to a dedicated charging station in your parking.

Remote activation of Water Heater

Now scheduling your water heater to turn on or off from anywhere is just a click, on the smartphone app, away.

The promoter is not the manufacturer/supplier of the security & home automation products and electric vehicle charging systems mentioned herein and makes no representation in relation to the same. These products are subject to standard warranties as may be provided by the applicable manufacturer/supplier.

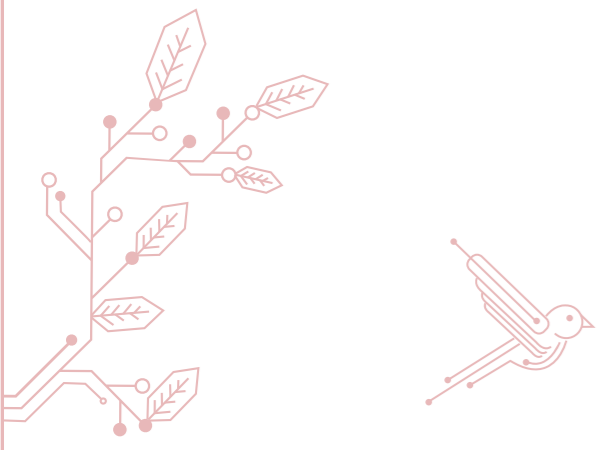


Indulge in a grand lifestyle with all the comforts you imagined

Balance is the key to living a good life. At tower Cedar technology and nature co-exist in harmony so you can live a balanced life. The smart home automation system makes sure everything in your home can be controlled from anywhere through an app on your mobile phone. The moment you step outside you can enjoy going on long walks, breathing in fresh air and smelling fragrant flowers. Even sitting under the shade of trees has its rewards of inspiration and relaxation. Come experience the Parkwest life.



Artist's Impression



A host of thoughtful amenities for unlimited happiness

Tower Cedar at Parkwest 2.0 is an address crafted to elevate your lifestyle to a higher level. Offering world-class amenities to take care of your physical, mental, spiritual and cultural well-being, these residences have something for everyone. From smart amenities to beautiful parks and gardens, there's everything you need for a luxurious lifestyle. There are also internal and external recreational facilities to enjoy community life at Parkwest. So, when it comes to leisure activities or pursuing a hobby, there's never a dull moment here.



Artist's Impression



Tennis Court



Basketball Court



Amphitheatre



Aerobics Zone



Senior Citizen's Square



Kid's Play Area



Infinity Pool

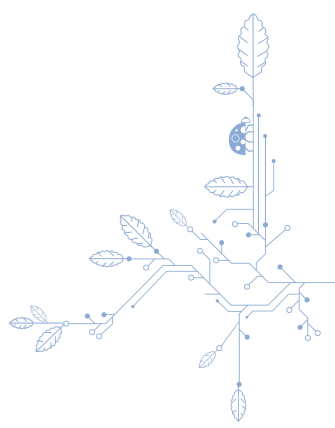


Clubhouse










Artist's Impression

Chase away the blues at the sprawling clubhouse



Indulge in the good life at the clubhouse. This 5,200 sq. m. clubhouse offers abundant activities to unwind and have fun with family, friends and like-minded neighbours. So come, relax after a hard day's work by taking a dip in the pool or party all night on the weekend, as Club Uno is the place to be. Get ready to increase your social circle and celebrate life to the fullest at Parkwest.



-  Table Tennis
-  Banquet Hall
-  Library
-  Pool Table
-  Card Room
-  Carom Board
-  Swimming Pool





Close to nature, closer to a blissful life

Step outside and enjoy the lush green themed parks, beautiful gardens and playgrounds. The green landscape is designed for a fresh and serene environment where you can bond with loved ones. The verdant trees, varieties of flowers and shrubs makes the perfect setting for leisurely walks or just to sit and relax. So, come explore the great outdoors at Parkwest.



Artist's Impression

- Tower Courtyard
- Grassland Promenade
- Forest Avenue
- Jogging Track
- Open Function Lawn
- The Meadow
- Parks
- Themed Gardens
- Walking Trail
- Reflexology Pathway
- Sunken Courtyard
- Pet Park
- Tree Retention Courtyard
- Tots/Kinetic Playground

TOWER CEDAR



A township designed with precision to take luxury to the next level

- | | | | | | |
|---------------------|-------------------------|--------------------------------|-----------------------------------|----------------------------|------------------------------|
| 1. Main Entry | 8. Heritage Tower | 15. Future Development | 21. Panoramic Viewing Deck | 29. Overlooking Lounge | 37. Aerobics Pod |
| 2. Tower Courtyard | 9. Amenity Center - 2 | 16. Adventure Play | 22. Pet Park | 30. Tennis Court | 38. Basketball Court |
| 3. Drop-off Area | 10. Infinity Edge Pool | 17. Amphitheater | 23. Walking Trail | 31. Bbq Deck | 39. Swimming Pool |
| 4. Entry Plaza | 11. Waterfall | 18. Kid's Play Area | 24. Mound Play | 32. Wading Pool | 40. Amenity Centre - 1 |
| 5. Forest Avenue | 12. Grassland Promenade | 19. Cricket Pitch | 25. Bus Lay-by | 33. Reflexology Pathway | 41. Half Basketball Court |
| 6. The Meadow | 13. Future Development | 20. Multi-purpose Sports Court | 26. Activity Pavilion | 34. Senior Citizens Square | 42. Tree Retention Courtyard |
| 7. Sunken Courtyard | 14. Open Function Lawn | | 27. Tot's Lot/ Kinetic Playground | 35. Jogging Track | 43. Youth Activity Corner |
| | | | 28. Tree House | 36. Park | 44. Skating Rink |
| | | | | | 45. Dry Swale |

Note: Please note that the Master Layout Plan shown above is an artist's impression of the actual space and is not to scale. The project is being developed in phases and hence a few of the common amenities and facilities shown, will be completed along with the completion of all phases in the project, subject to approval from the relevant authorities. Appearance of the landscape will depend on seasonal changes and weather conditions. The representation of plants/trees/plantation/flowers in the image are shown as fully grown in healthy conditions. The growing time of the plantation may vary depending upon the type and species.



Artist's Impression

Your Portal to Grand Living





Artist's Impression

Feel the Splash





The Entrance Plaza to Your Abode

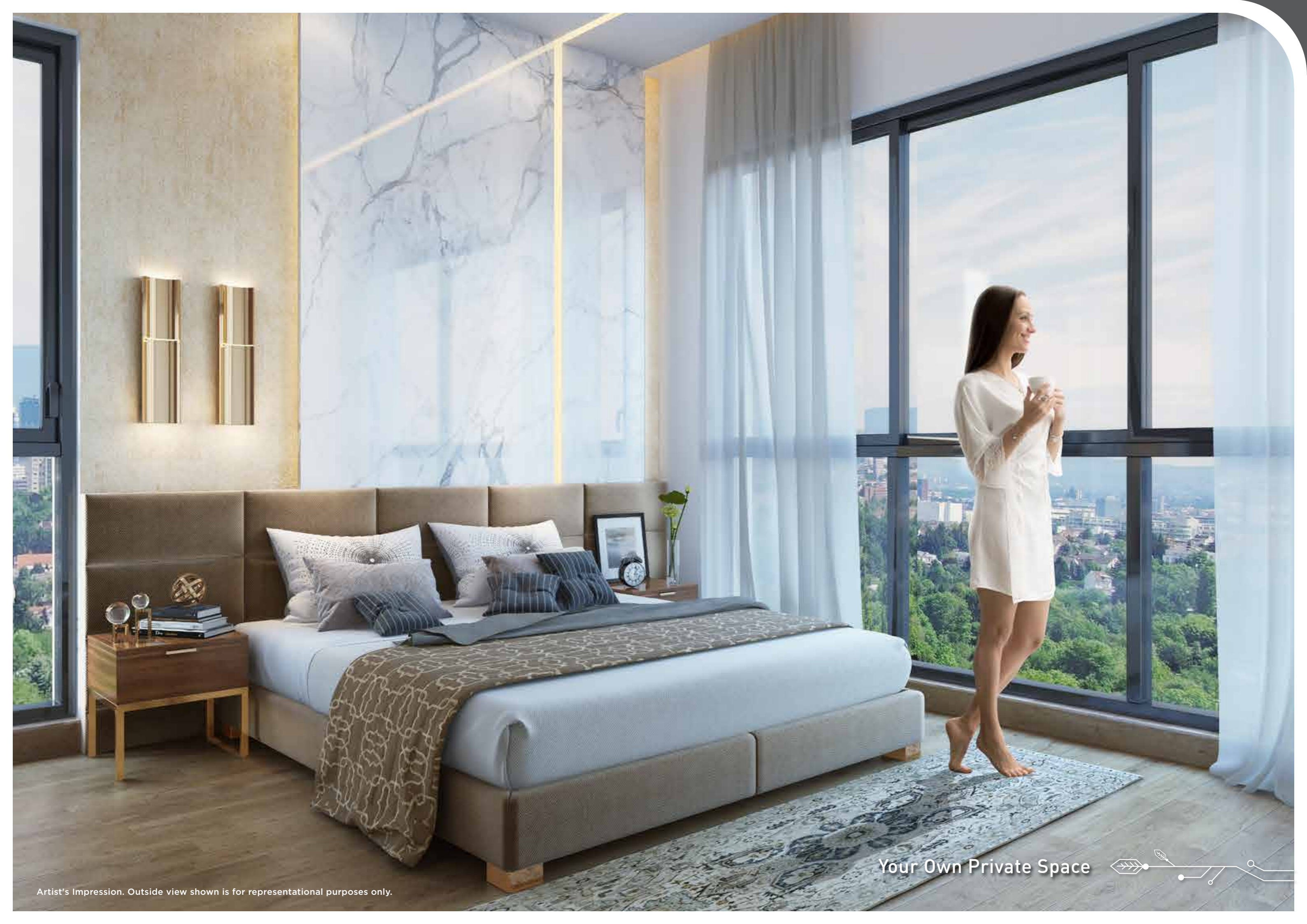




Artist's Impression

Rise Above The City

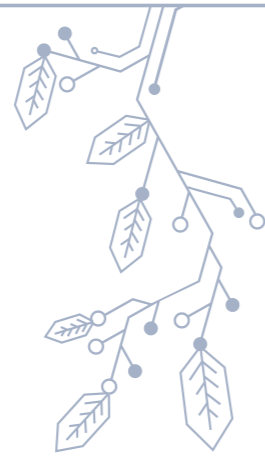
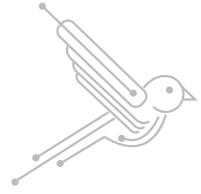




Your Own Private Space



Artist's Impression. Outside view shown is for representational purposes only.



A legacy of trust and excellence built over 157 years

With a legacy of over 157 years, the Shapoorji Pallonji Group is known for creating landmarks across the globe. This trusted Group has a well-built reputation in the industry for its engineering and construction solutions. Honesty, integrity and transparency have been the pillars of the Group's overall success. Today, the Group has grown phenomenally spreading its foothold in 40 countries and has a strong base of 40,000 employees worldwide.



Actual Images

MAYDAN RACE COURSE ROAD, DUBAI



PALACE OF THE SULTAN OF OMAN



TRIDENT, MUMBAI





Stock Image





Shapoorji Pallonji

Real Estate

Site address: Parkwest, No. 1/1, Hosakere Road Ward No. 121, Binnyfields Binnypet, Bengaluru, 560023 | Website: <http://shapoorjirealestate.com>