



SHREEJI  
G R O U P  
O F C O M P A N I E S  
Building Bonds Of Trust



SHREEJI  
**ETERNITY**



Eternal | Infinite | Inclusive

# ETERNAL

Enter a space where you  
are warmly embraced by  
a lasting legacy.



# INFINITE

Enjoy a place enriched  
with endless possibilities  
and savour a limitless life.



# INCLUSIVE

Witness the beauty of diverse cultures uniting in harmony.



---

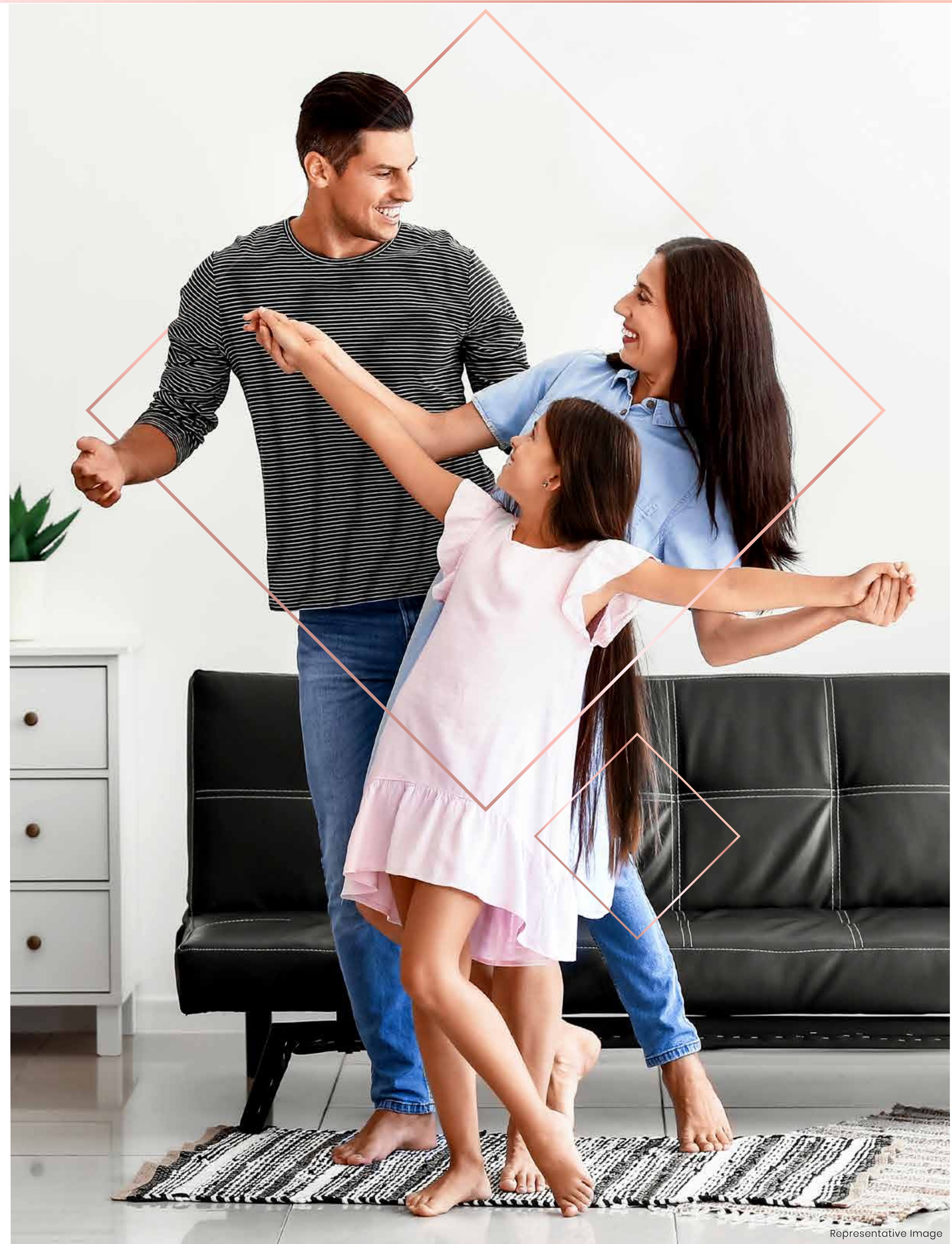
## LINK ROAD, MALAD WEST

A prime location that naturally enlightens both the residence and its neighborhood.

Malad offers great convenience and an upscale lifestyle, it is one of the most sought-after locations in Mumbai's western suburbs. A destination that creates your stature and confers regal living.

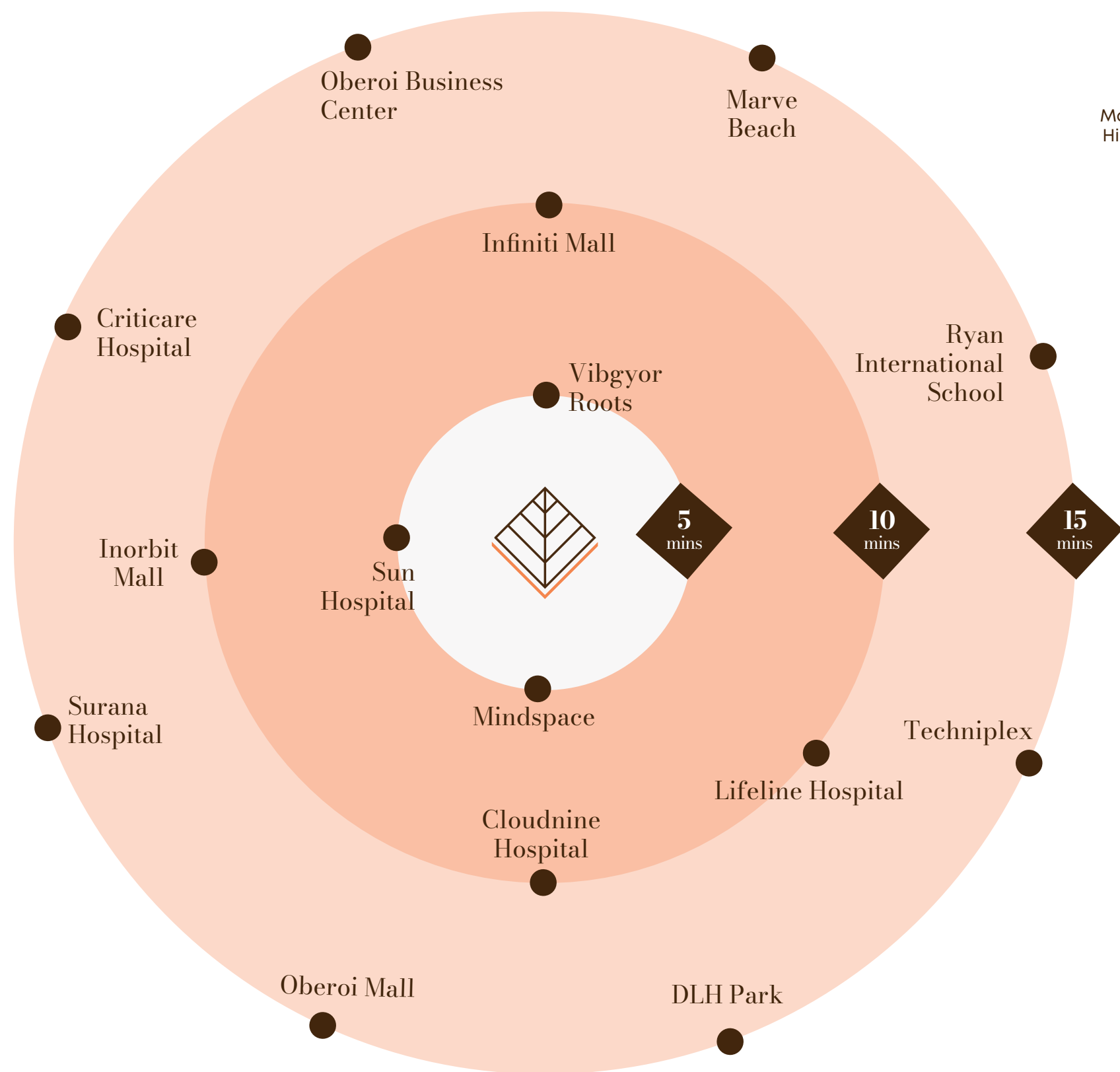
With the latest infrastructure developments, like metro and upcoming coastal roads, it will provide further connectivity advancements apart from roadways and railways.

Beyond excellent accessibility, this locale provides convenient access to essential services, lifestyle venues, educational institutions, and more. Its value extends beyond the present, promising a sustained and enhanced lifestyle for the years ahead.



# LOCATED IN THE NUCLEUS OF THE CITY

Offering convenience and a rich culture.



The map shows the project's location at the intersection of Malad Marve Road and New Link Road. Key features include:

- Project Location:** SHREEJI ETERNITY, marked with a diamond icon.
- Transportation:** Dahanukarwadi Station, Valnai Metro Station, Malad Metro Station, and Malad Station.
- Healthcare:** Lotus Hospital, Phoenix Hospital, Sumangal Hospital, Raksha Hospital, Surana Hospital, Namaha Hospital, Lifeline Multispeciality Hospital, Sarswati Hospital, and Sun Hospital.
- Education:** Billabong High School, Roaring Farm, Atharva College of Engineering, Mount Mary High School, Ryan Int. School, Octopus Pre-School, EuroKids PreSchool, Father Angelo High School, Dayanand Angelo Public School, Rejoice International School, and Vibgyor School.
- Commercial & Leisure:** Bageecha Banquet & Lawns, Atlantis Hospital, Infiniti Mall, Movie Time Cinema, D-Mart, PVR Cinemas, and Nagindas Khandwala College.

# Lifestyle experiences spread over 33,000 sq.ft.

Come home to an ultra-exclusive lifestyle situated in the city's premier neighbourhood, capturing the very essence of luxury living. Every aspect here is thoughtfully planned to bring you handpicked experiences. Each residence is made with care, matching top-of-the-line features to give you the finest life has to offer.

—◆—  
Premium  
2 & 3 BHK Balcony Homes.



# Premium experiences designed for the whole family.

## Health & Fitness

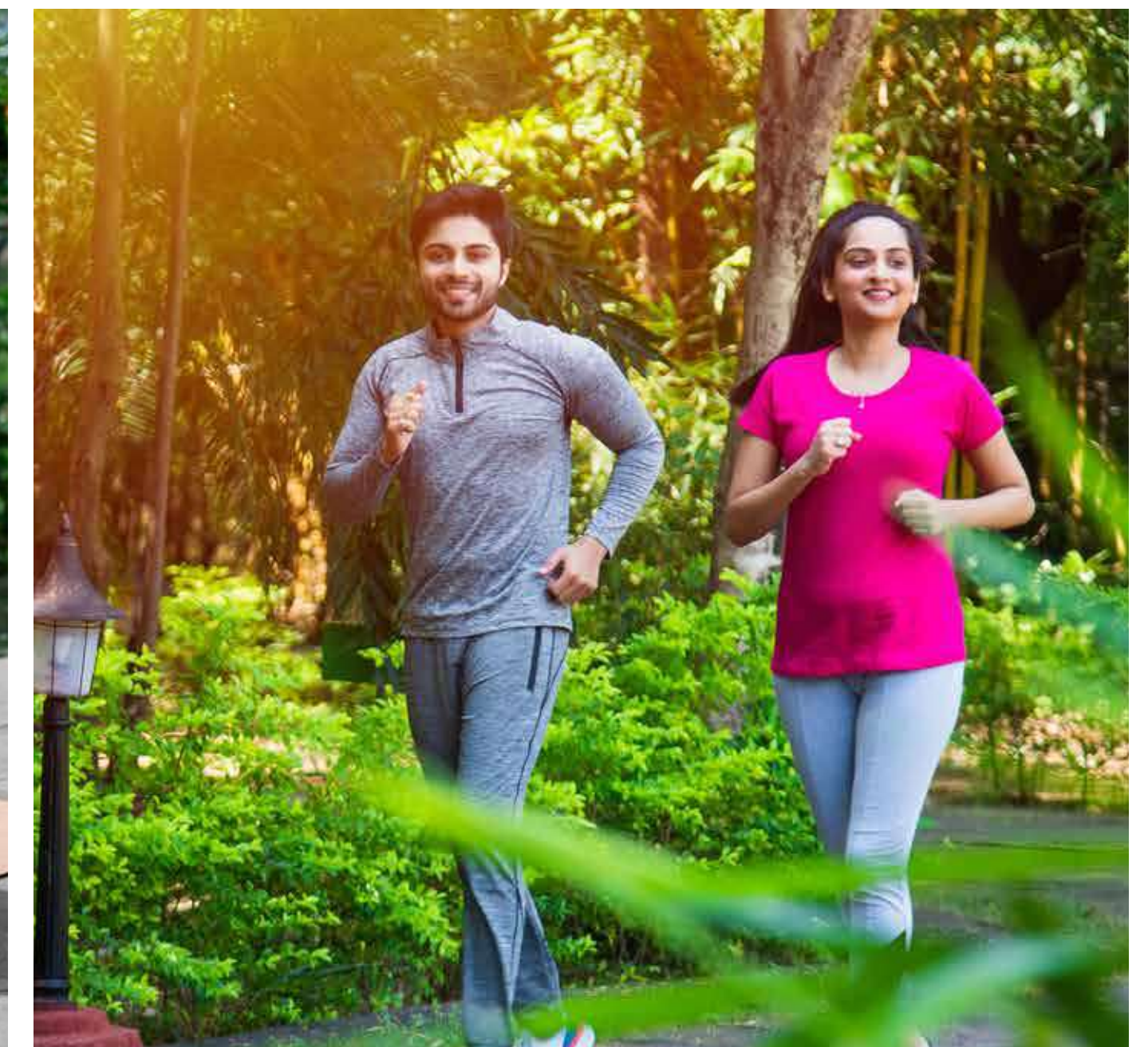
- Gymnasium
- Meditation Zone
- Joggers Track
- Dance Studio with Changing Room
- Multipurpose Turf

## Kids' Centric Amenities

- Toddlers' Play Area
- Kids' Play Area
- Garden

## Community Avenues

- Party Deck
- Banquet Hall
- Indoor Clubhouse
- Courtyard Garden





## Leisure Spaces

- Media Room
- Sitting Area
- Senior Citizens' Sit-out

## Key Conveniences

- Library
- Conference Room
- Guest Room with Washroom

—◆—

Exceptional craftsmanship  
that heighten residencies with  
best-in-class quality and luxury.





## RESIDENCES THAT RADIATE TOP-NOTCH QUALITY INSIDE-OUT.

### Superlative construction

Longlasting structural durability with alluminium formwork technology.



### Intelligently planned apartments with zero space wastage

Every inch is used wisely, no wasted space.



### Sky-deck balconies with clear view

Balconies that offer lifetime, wide-open views.



### Premium finishes - walls and windows

Highest standard materials used from the best of brands.



### Video door phone

Peace of mind for your family's safety, always.



### Premium vitrified flooring and flat ceiling finish

Top-tier tiles and smooth ceilings for an elegant look.

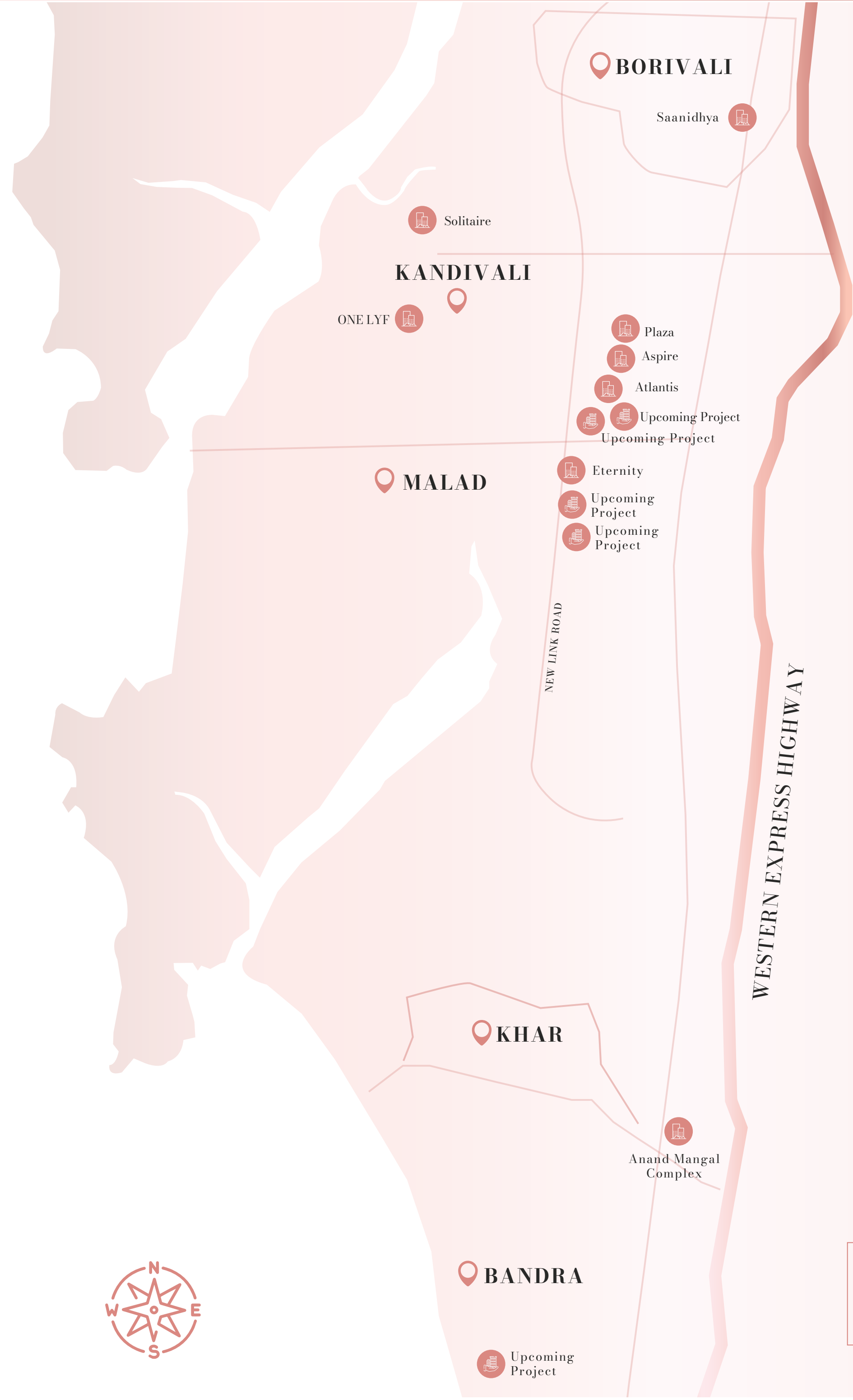
# Shreeji Group

One of the fastest developing Real Estate brands of Mumbai's western suburbs!



## Our Footprints:

Shreeji Group of Companies enriches Mumbai's skyline, expanding its successful portfolio to iconic locations such as Khar, Borivali, Kandivali, and notably, Malad.

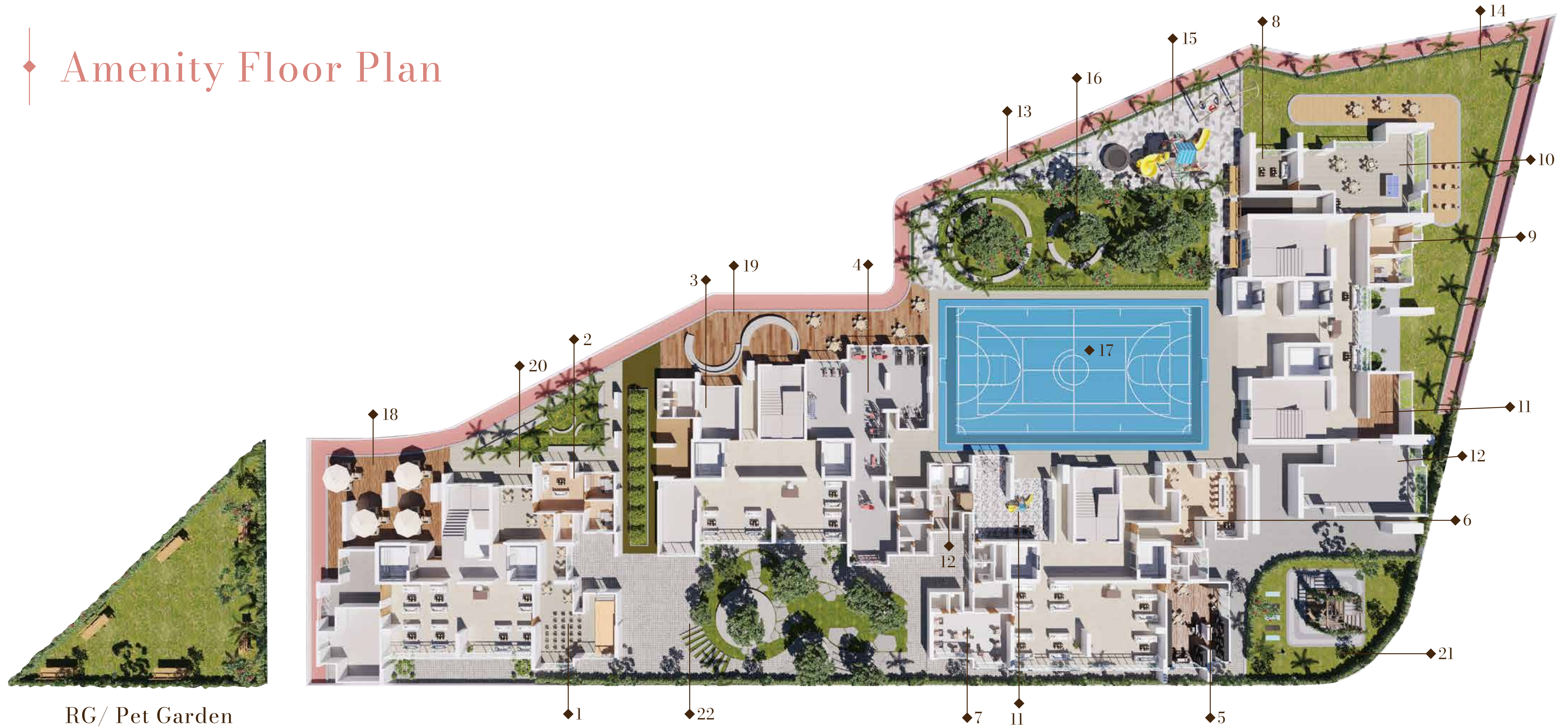


**Legend**

- Upcoming Projects
- Ongoing Projects

Only for Reference Purpose

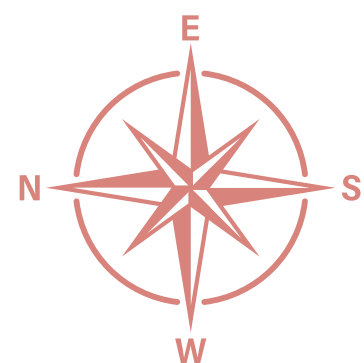
# Amenity Floor Plan



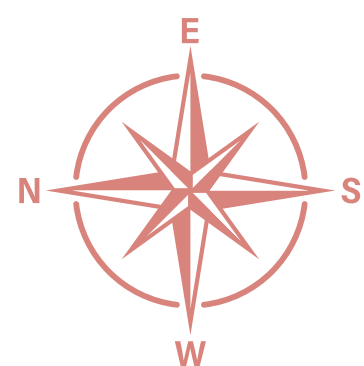
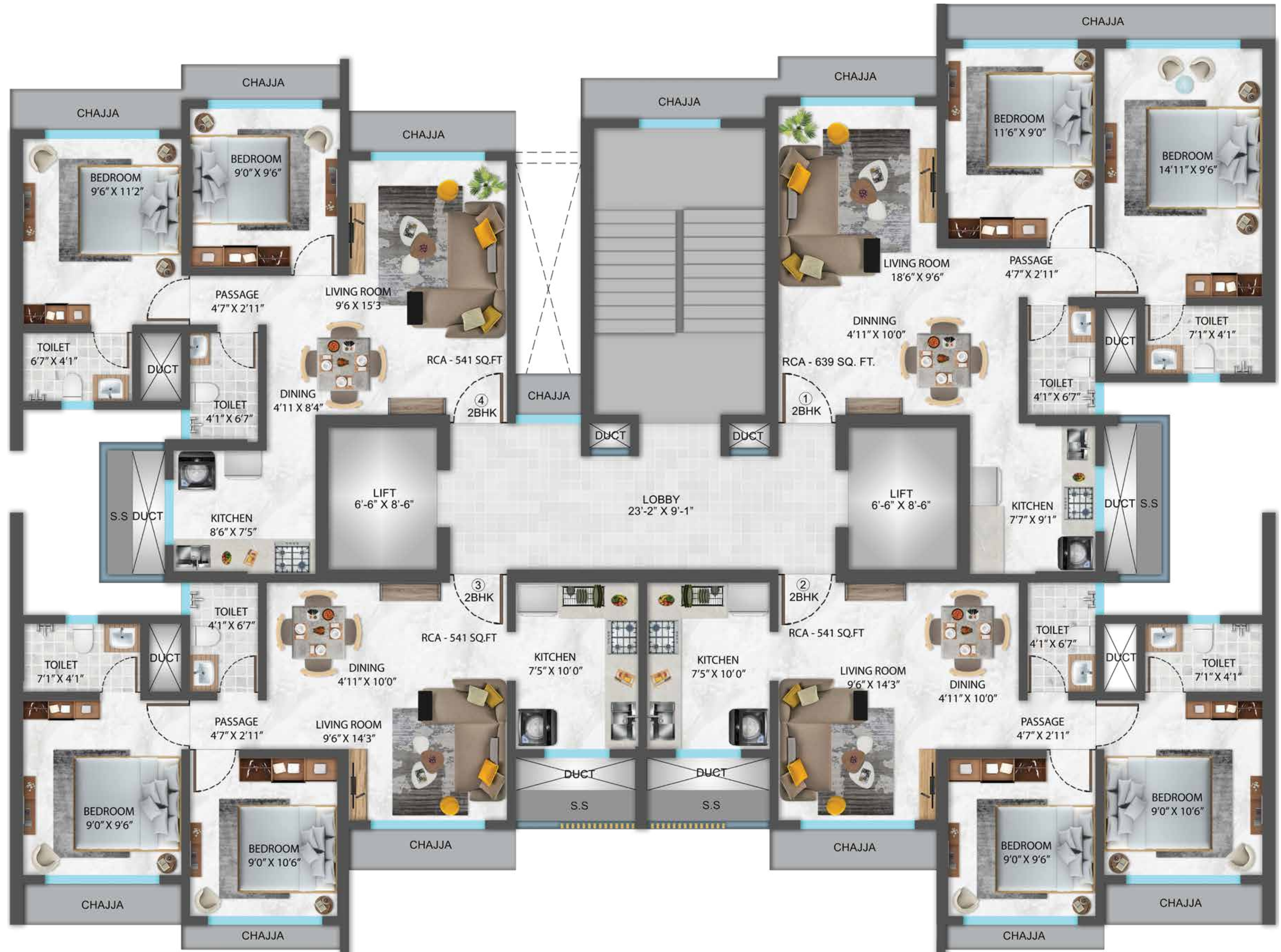
RG/ Pet Garden

- |                                    |                             |   |                         |
|------------------------------------|-----------------------------|---|-------------------------|
| 1- Banquet Hall                    | 7- Media Room               | 13- Joggers Track                                 | 18- Party Deck 1        |
| 2- Guest Room with Sitting Area    | 8- Video Gaming Room        | 14- Sitting Area                                  | 19- Party Deck 2        |
| 3- Dance Studio with Changing Room | 9- Guest Room with washroom | 15- Kids' Play Area & Senior<br>Citizens' Sit-out | 20- Sitting Area        |
| 4- Gymnasium, Sauna & Jacuzzi      | 10- Indoor Clubhouse Area   | 16- Courtyard Area                                | 21- Meditation Zone     |
| 5- Library                         | 11- Toddlers' Play Area     | 17- Multipurpose Turf                             | 22- Landscape Courtyard |
| 6- Conference Room                 | 12- Changing Rooms          |   |                         |

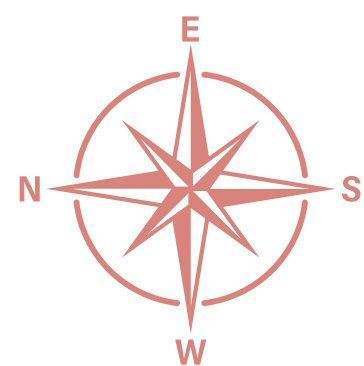
# Wing A



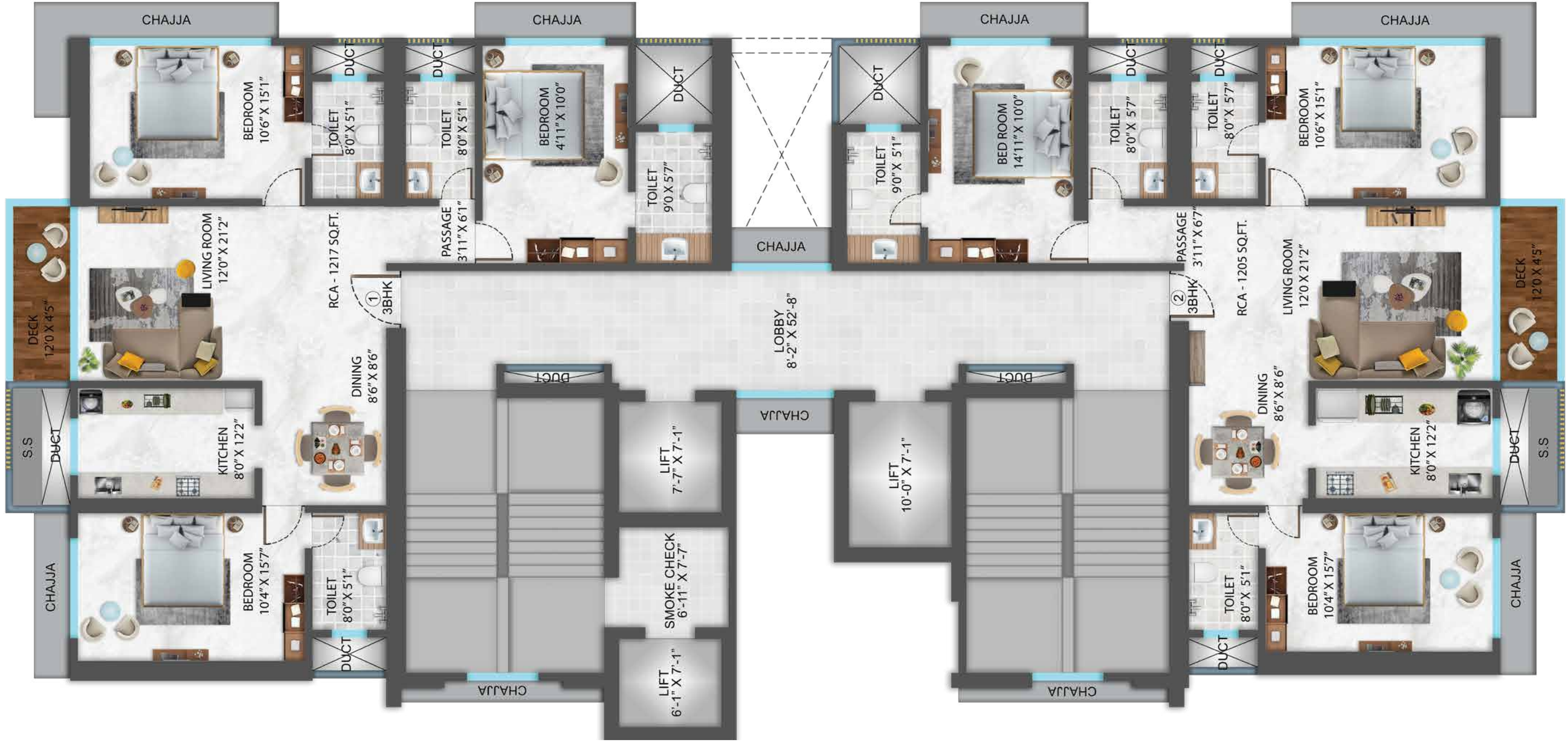
# Wing B



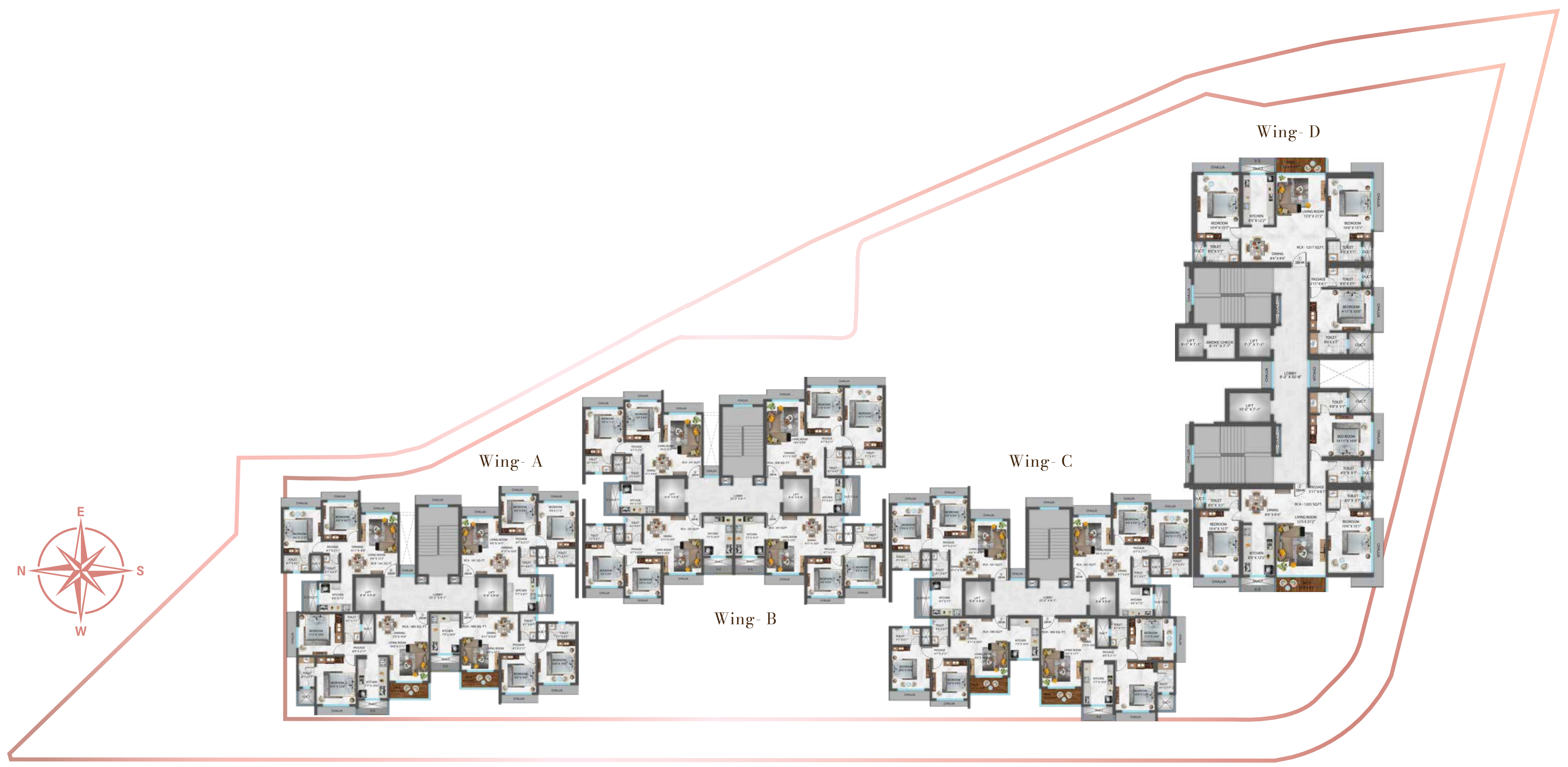
# Wing C



# Wing D



# ◆ Project Layout








**SHREEJI**  
G R O U P  
OF COMPANIES  

---

Building Bonds Of Trust

✉ [eternity@shreejigroup.net](mailto:eternity@shreejigroup.net) | ☎ 91581 78915



The project has been registered via  MahaRERA registration number: P51800054310, D wing P51800054233 and is available on the website <https://maharera.mahaonline.gov.in> under registered projects.