

ARHAM
ARYAN

THE ESSENCE OF NOBILITY

ABOUT US

At Mahavir Group, we have always believed that trust, superior quality and customer satisfaction are our measures of success.

With over 20 years of experience in the real estate industry, we have successfully ensured that our expertise drives all decision making. From carefully following our mandates to finding the perfect project partners, we eliminate any unnecessary mistakes.

We promise to deliver excellence in the form of houses and are very proud to witness them transform into meaningful homes. Our track record is our biggest testimonial and our happy clientele is our biggest reward.

We believe that our integrity is our biggest virtue. With this we always ensure that the development of our projects are closely monitored and all required compliances are duly obtained.





OUR PHILOSOPHY

PERSEVERANCE

We strongly believe that with perseverance, all things are attainable. With this belief, we walk an extra mile to ensure all the mandates, permissions, authorizations and compliances are received before handing over possession to our customers. We don't stop there, we're in the business of building relationships and promise to stand by our customers, always.

COMMITMENT

Trust and reassurance are the strongest pillars of the real estate industry in India. For us, our sustained commitment to quality, to integrity and to our partners, customers and employees has helped us build our empire and achieve our goals. We owe our legacy to the people that trusted us and to the commitments we kept.

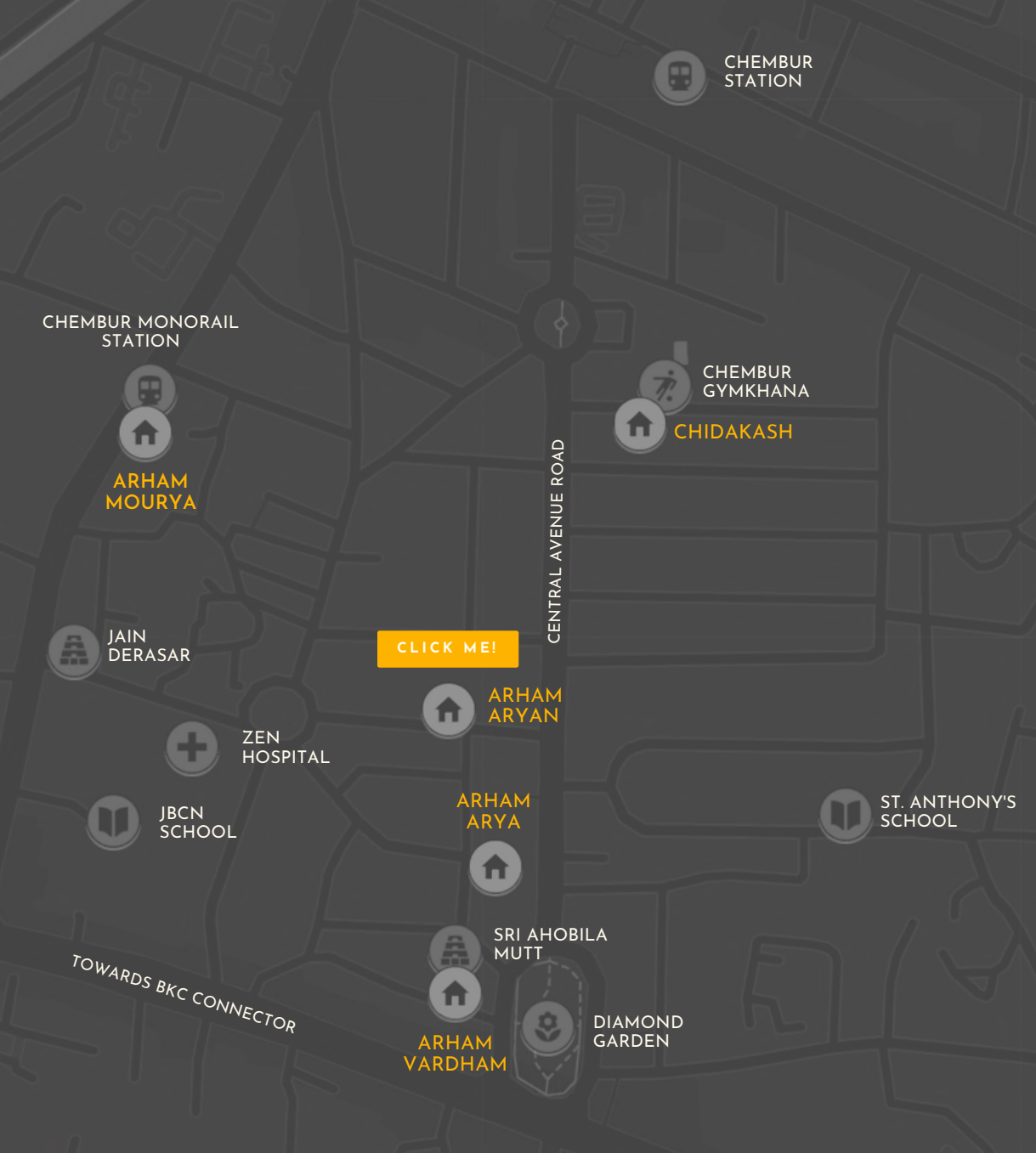
INNOVATION

As a multi-generational business, we have learnt the best way to progress is through innovation. We actively choose to learn from our previous projects and mistakes to ensure we find better, more sustainable ways to solve existing problems in the industry. For instance, whenever we've done things differently and given customers more than they expected, it truly enhanced their experience, reduced future problems and positively impacted loyalty.

ARHAM ARYAN

Experience the essence of nobility at Arham Aryan - Mahavir Group and Trinity Builders' latest project features stunning and meticulously designed 2 & 3-bedroom residences. Nestled in the peaceful suburb of Chembur, this oasis provides a tranquil escape from the city's bustle, while still ensuring convenience and comfort for travel. With an impressive blend of contemporary amenities, elegant interiors, and expansive outdoor areas, Arham Aryan bestows a regal distinction upon every member of the family, perfectly blending traditions and grandeur.





CHEMBUR

Located near the intersection of Diamond Garden in Chembur, Arham Aryan's prime location provides convenient access to all that Mumbai has to offer. With its excellent connectivity, it is the ideal choice when connectivity & accessibility are top priorities on your list.

WITHIN 2 MINUTES*

- D-Mart and K-Star mall
- Diamond garden
- Upcoming metro station
- Sri Ahobila Mutt

WITHIN 5 MINUTES*

- Zen Hospital
- St. Gregorious school
- Bombay Presidency Golf Club
- Eastern Freeway
- Chembur Gymkhana

WITHIN 20 MINUTES*

- International airport
- BKC

*Timings as per google maps.



A MAJESTIC LIVING EXPERIENCE

With a brilliant combination of modern amenities, exquisite interiors and open spaces, Arham Aryan adds an aristocratic title for everyone in the family, positioning it as the convergence of luxury and nobility.

IN THE RESIDENCES

AMENITIES

-  WELL VENTILATED APARTMENTS
-  PREMIUM VITRIFIED FLOORING
-  VIDEO PHONE & INTERCOM SYSTEMS
-  POP WITH ACRYLIC/VELVET PAINTED WALLS
-  PROVISION OF SPLIT AIR-CONDITIONERS
-  VAASTU COMPLIANT RESIDENCES
-  TECHNOLOGY-ENABLED HOMES
-  FIRE RETARDANT SAFETY DOORS
-  NOISE-REDUCING SLIDING WINDOWS





LIVE LIKE ROYALTY

Offering a range of contemporary amenities, including a fully equipped gymnasium, carefully designed kids' play area, landscaped garden for seniors, multipurpose hall for gatherings, and an exclusive rooftop, Arham Aryan is perfect for multi-generational families blending sophistication & cultural values.

BUILDING FACILITIES



INTERCOM



ADVANCED SECURITY SYSTEMS



MULTI-PURPOSE ROOM



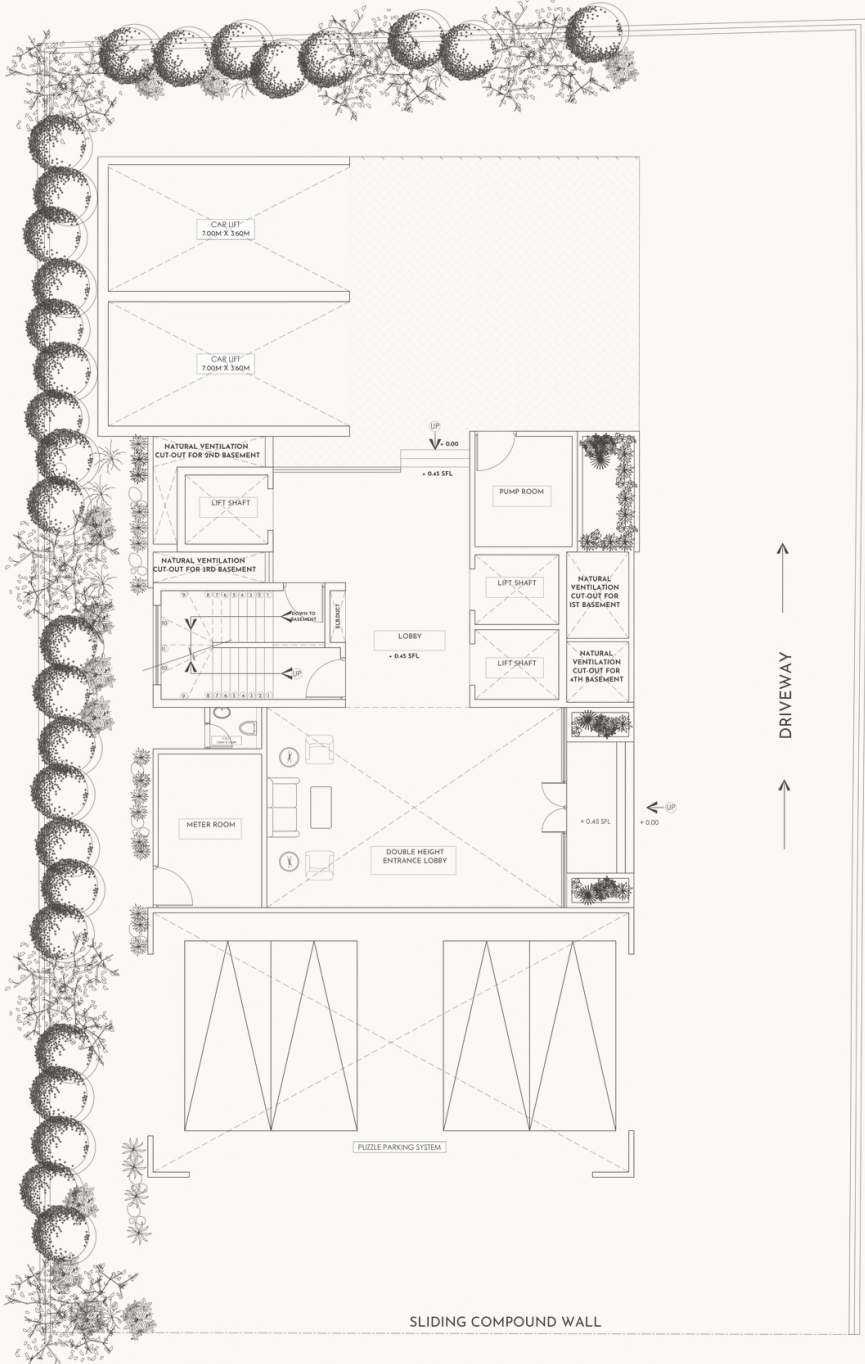
HIGH SPEED ELEVATORS

Featuring future-ready homes
with state-of-the-art facilities.



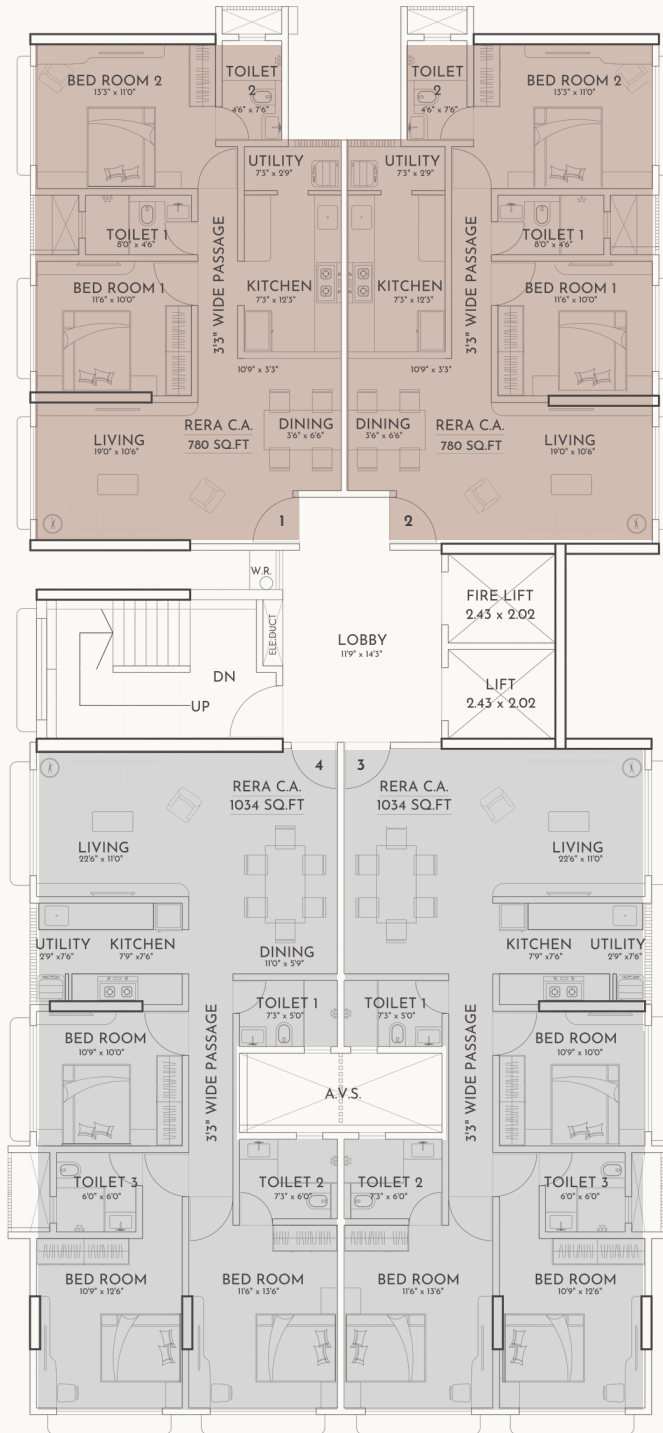
UPGRADED FIRE SAFETY

GROUND FLOOR PLAN



*Image shown for representation purposes only

- ARHAM CLASSIC
- ARHAM PREMIERE



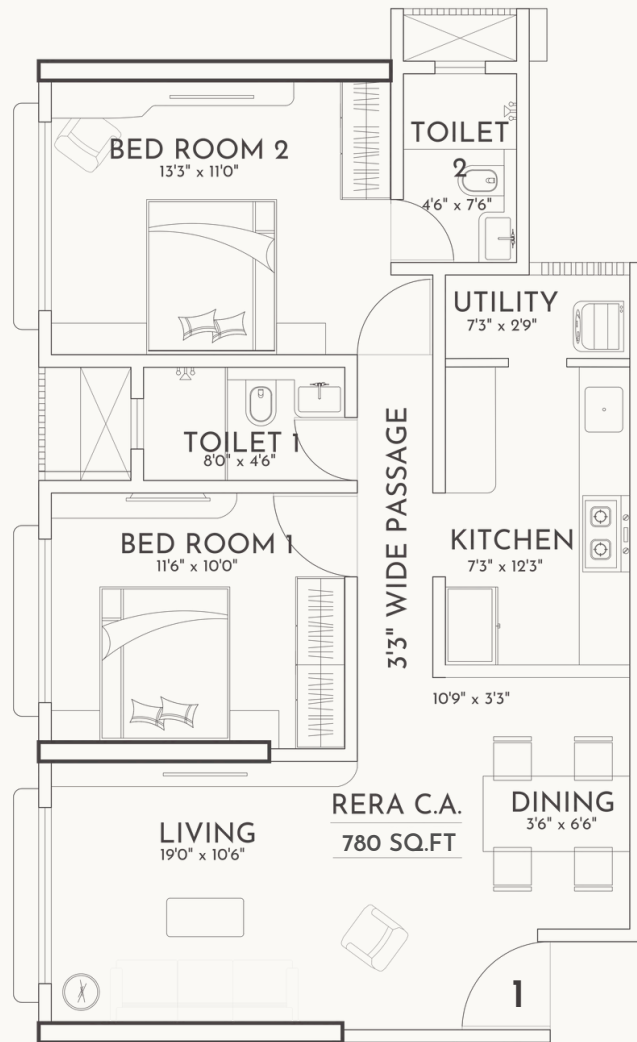
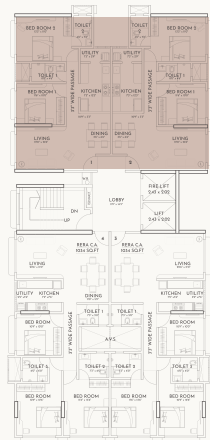
APARTMENT FLOORPLAN



*Image shown for representation purposes only

ARHAM CLASSIC

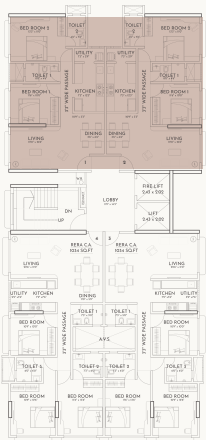
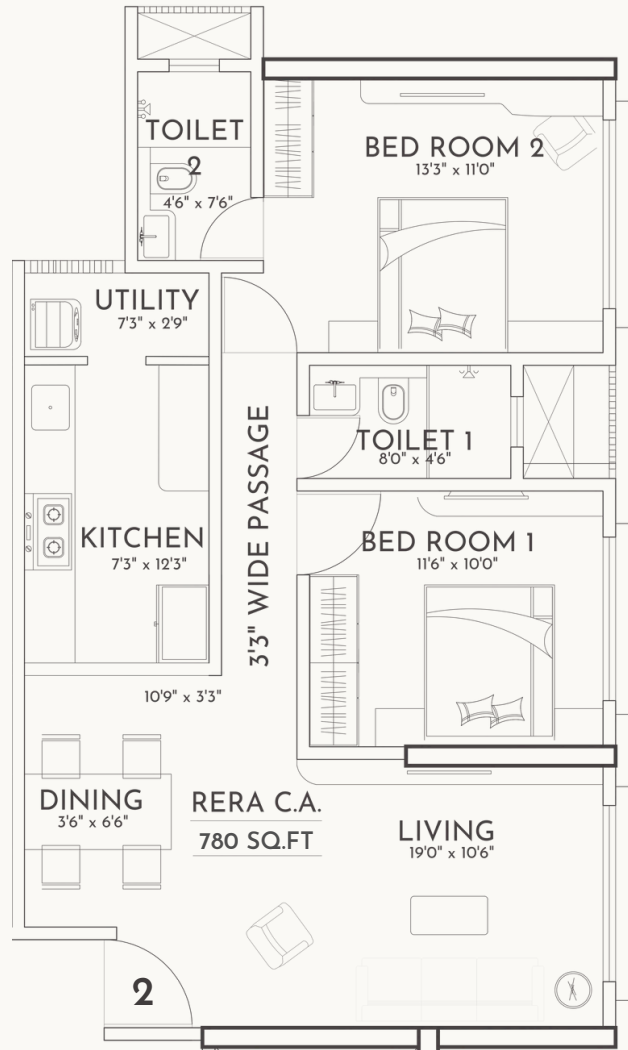
2 BHK
780 SQ.FT.



*Image shown for representation purposes only

ARHAM CLASSIC

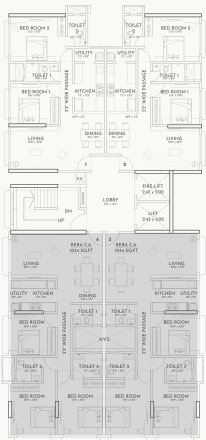
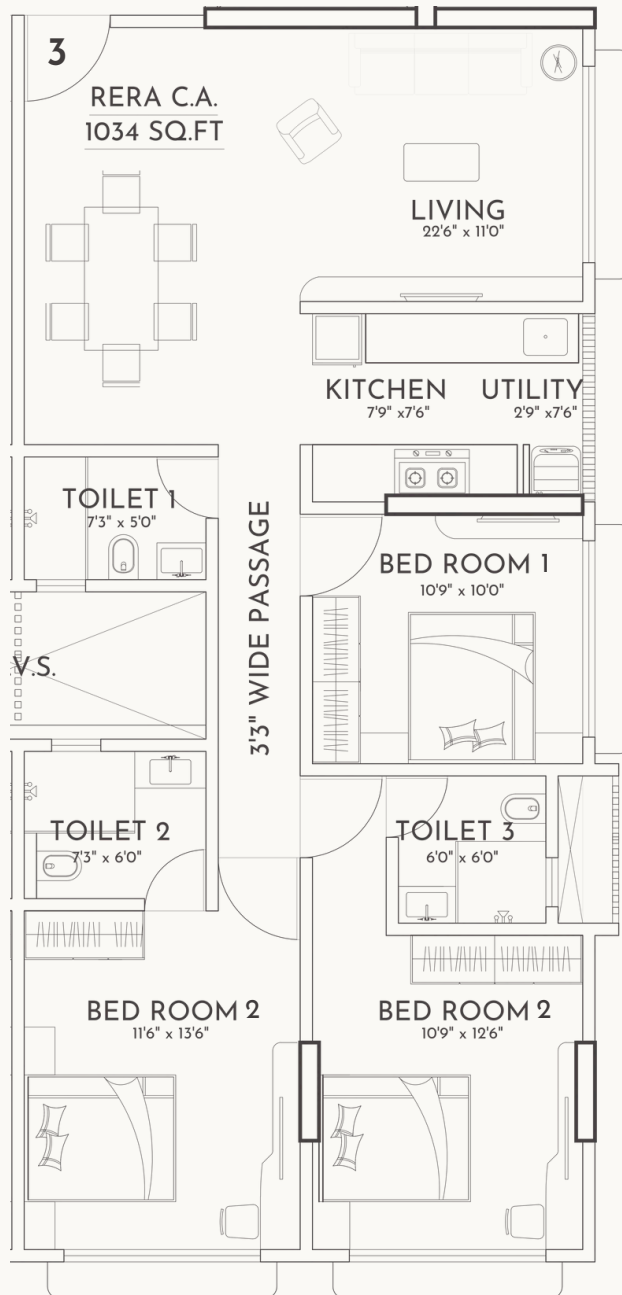
2 BHK
780 SQ.FT.



*Image shown for representation purposes only

ARHAM PREMIERE

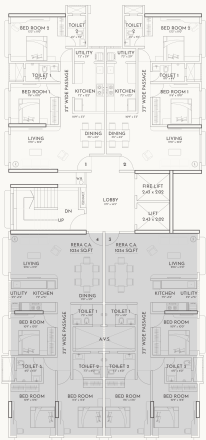
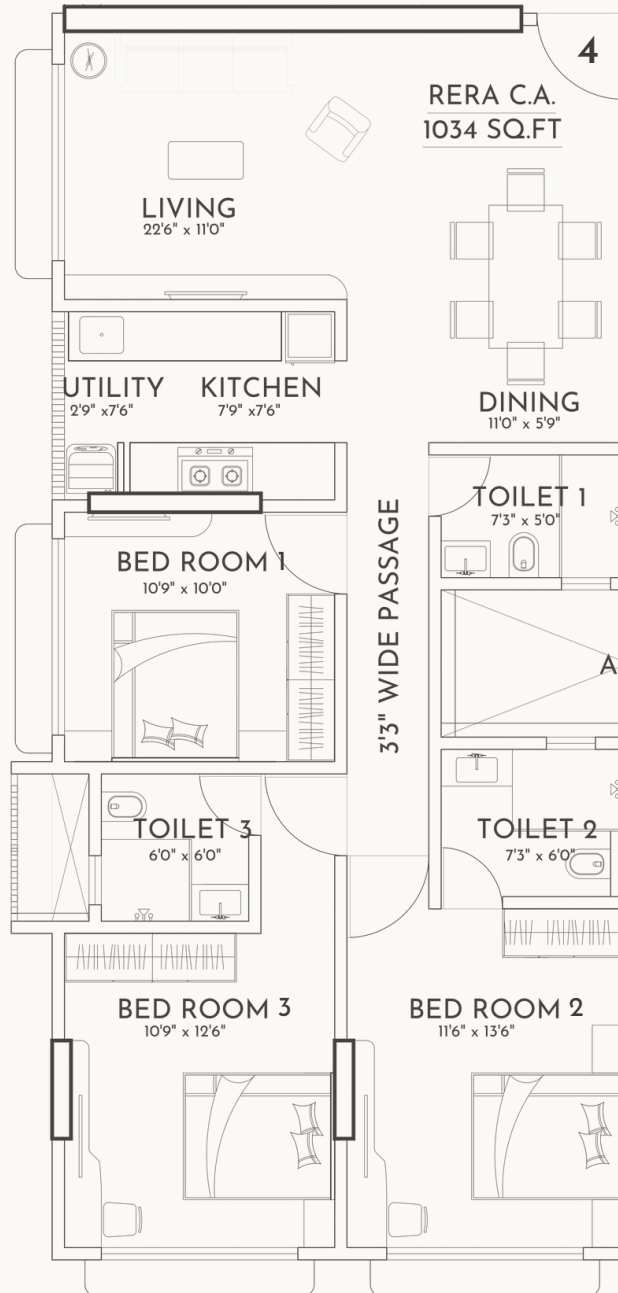
3 BHK
1034 SQ.FT.



*Image shown for representation purposes only

ARHAM PREMIERE

3 BHK
1034 SQ.FT.



*Image shown for representation purposes only

THOUGHTFULLY DESIGNED

Crafted for you by this phenomenal team of partners, the Arham Aryan residences measure up to the highest standards of quality & design.

SOLICITORS

J.K Ashar & Co

ARCHITECT

Nambarch

DESIGNING ARCHITECTS

Associated Architects

RCC CONSULTANTS

Associated Structural Consultants LLP





OTHER PROJECTS

MATUNGA

+ Arham Aum

CHEMBUR

- + Arham Brindavan
- + Arham Palms
- + Arham Tulsivihar
- + Arham Pitru Chhaya
- + Arham Vardham
- + Chidakash
- + Arham Mourya
- + Arham Arya

BHANDUP

+ Arham Marigold



ARHAM
VARDHAM



ARHAM
ARYA



ARHAM
MOURYA



CHIDAKASH



MAHAVIR
GROUP



TRINITY
BUILDERS

CONTACT US

+91 75067 60006

info@mahavirgroup.com

<http://www.mahavirgroup.com/>

MahaRERA P51800050811

1&2, Bldg No. 4, Ground Floor, 2nd Rd, Kandhari Colony, Chembur, Mumbai, Maharashtra - 400071



Disclaimer: The Developer reserves the right to change plans, specifications & features without prior notice or obligation, at their sole discretion and subjective to the approval of government authorities. All specifications, writeups, internal layouts, renderings, floor plans, maps & pictures shown in this booklet are only indicative and are the artist's conceptions, not actual depictions of the building, its walls, roadways or landscaping.