



www.surbanscapes.com



*the art of
creating time*



A landmark apartment by SB Urbanscapes @ Bommanahalli, Bangalore

RERA No. PRM/KA/RERA/1251/310/PR/171223/002016



www.surbanscapes.com



the
ultimate
living
experience

A land mark apartment by SB Urbanscapes @ Bommanahalli, Bangalore
Rera Reg. No. : PRM/KA/RERA/1251/310/PR/171223/002016



life is more
enjoyable
when the
last minute
is your side

Located in the most sought after address of Temple Tree expectations in maintaining a private, low-density sanctuary surrounded by the tranquility of nature. Bommanahalli is the address one of the well desired address in Bangalore.





to a
loved one,
'love'
is spelt
t-i-m-e

Life is all about comforts, conveniences and luxuries. What if all of these come with a measure of heights and extremities. Everything is inclusive at Temple Tree. A high-raised luxury apartments are built keeping you in mind. We know, a person like you will not compromise, come what may. A community for like minded people like you who have keen eye for details and aesthetics.



First-class
Convenience

Ground floor +
14
floors

SPECTACULAR
VIEWS

200
parking spaces

2, 2.5 & 3 BHK
impressive flats

5 star lobby

Panoramic
windows

158 APARTMENTS

URBAN
location with perfect surroundings and transport links

Secluded balconies offering total PRIVACY



— — —
present
capture
the present,
treasure
every frame

Just as your home is well appointed, so is the landscape around each tower – With perfectly manicured gardens covered with a blanket of rich green foliage, walkways, shaded sitting areas and the captivating fragrance of fresh flowers. Go for an exhilarating workout at the state-of-the-art gym overlooking the stunning resort pool that beckons you to splash and swim a few laps. Watch the kids laugh on the playground and enjoy the completely integrated club experience that is yours at Temple Tree.





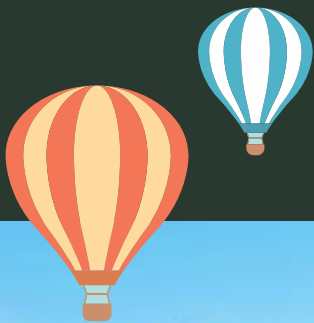
experience
a dramatic
view or a
quiet moment
of beauty

A beautifully landscaped linear park will run the length of 300 mtrs connecting the network of gardens and open spaces, and providing a focal point for leisure and recreation.



project features

- > Central sitting area
- > Adventure Climbing wall
- > Cricket pitch
- > Sand pit
- > Outdoor Party Lawn
- > Meditation & Yoga
- > Outdoor Family Lounge
- > Children's play areas
- > Jogging track
- > Each unit will be connected to security through intercom
- > Round the clock security
- > Half Basketball Court
- > Water Play Area





Temple Tree
luxury apartments



awe
inspiring
architecture
and stunning
design

Residents will experience unrivalled view from the upper floors. At 12 level, an innovative floating walkway will allow them to enjoy the facilities of the five-star level without stepping outside.





— — — — —
moments
measure
your time
by the moments
you enjoy

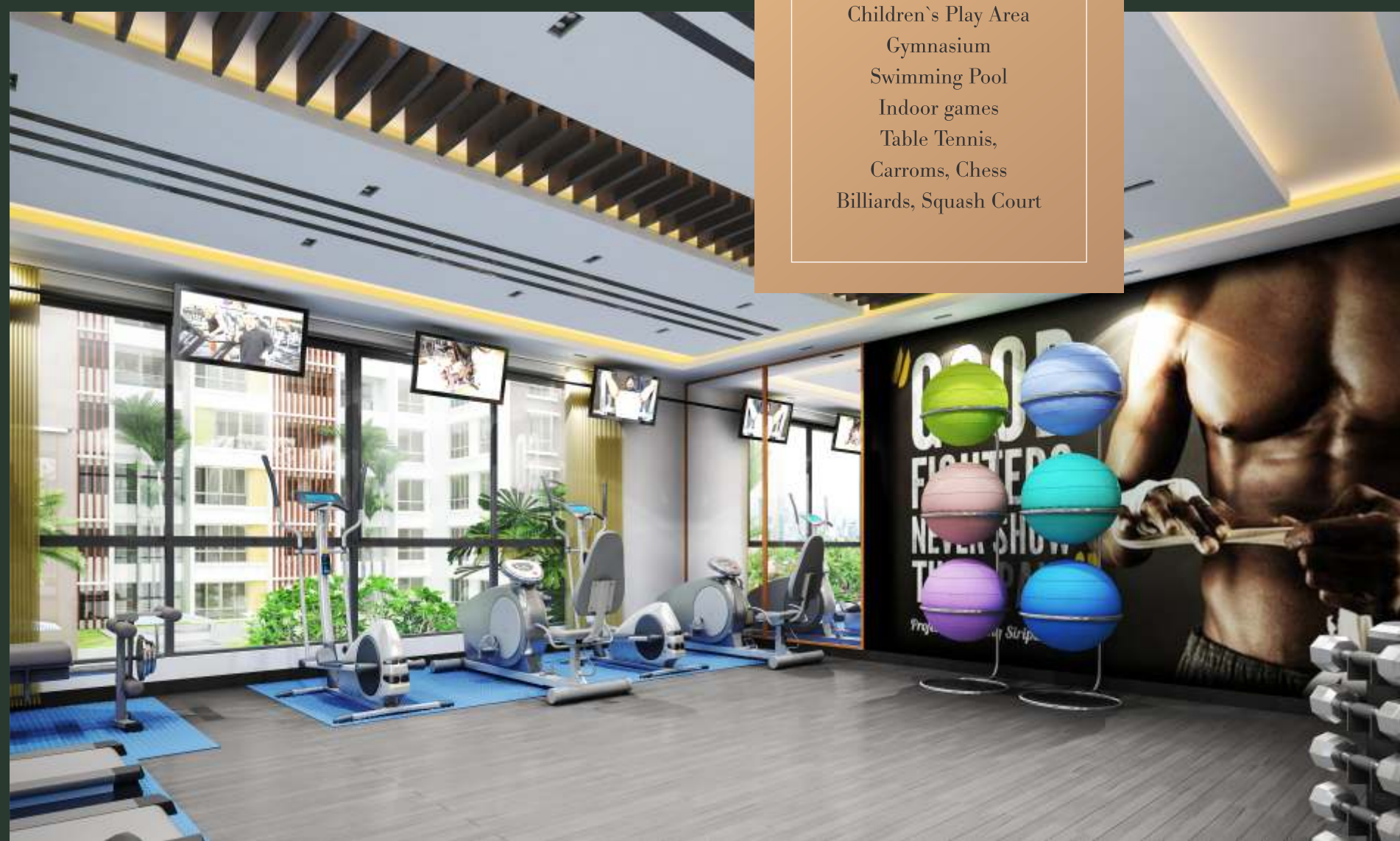
Drink in the lovely pool view flanked by lush greenery, as you lounge comfortably in a cabana pod and watch the world go by. Make your vacation last longer with the numerous "holiday spots" on the leisure space located at ground floor.





club features

- Multipurpose Hall
- Children's Play Area
- Gymnasium
- Swimming Pool
- Indoor games
- Table Tennis,
- Carroms, Chess
- Billiards, Squash Court



club house
where
urban flirts
playfully
with the
urbane



occasions
each
new day
is a special
occasion

Interspersed with your living space,
delightful view on bird eye create
aesthetic pleasure for your family and friends.





Block A & C - 1 East Facing

Area Statement (in sft.)

CARPET AREA	SBA
1015	1565

KEY PLAN





Block A - 2 West Facing
Area Statement (in sft.)

CARPET AREA	SBA
925	1467

KEY PLAN

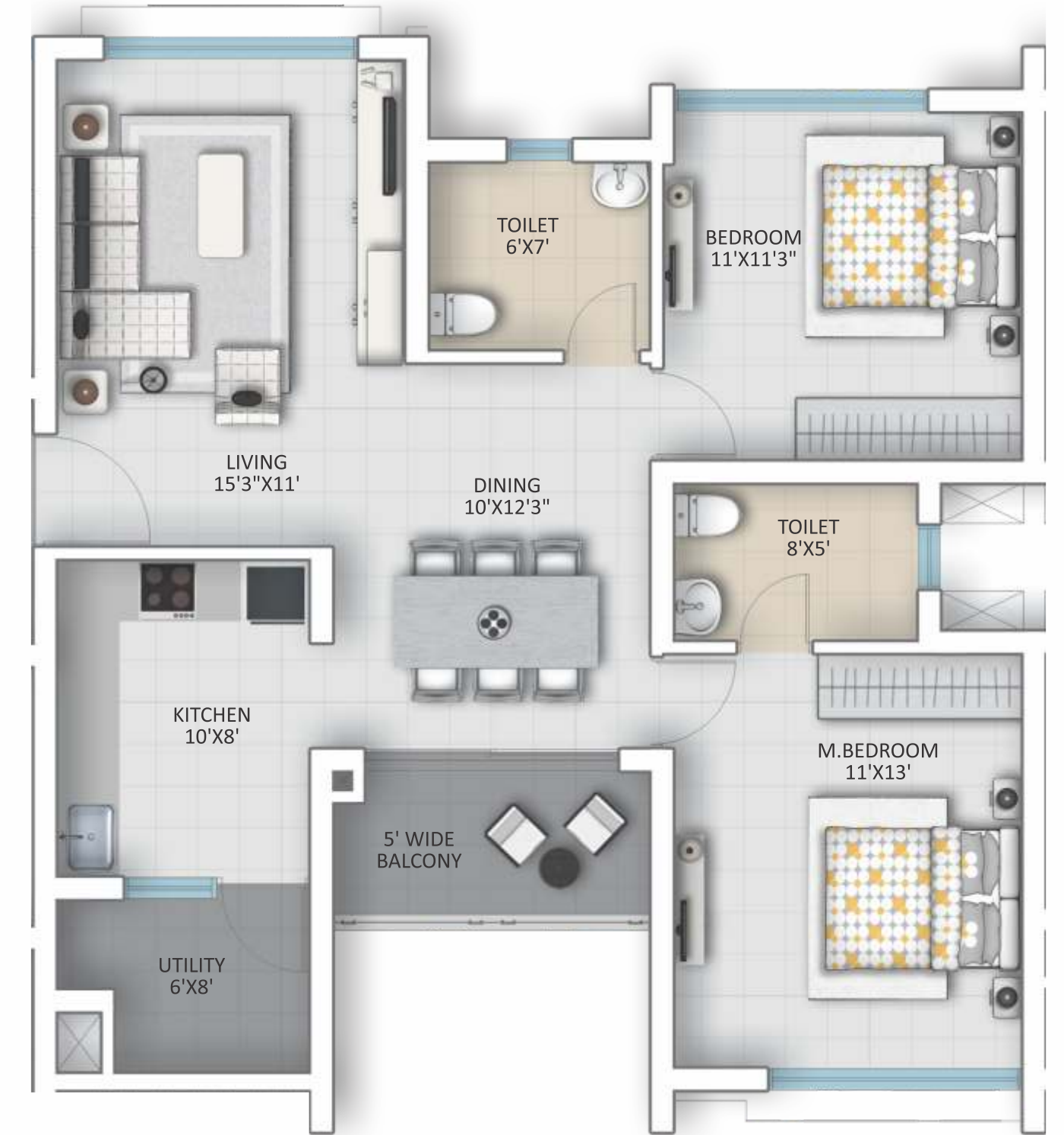
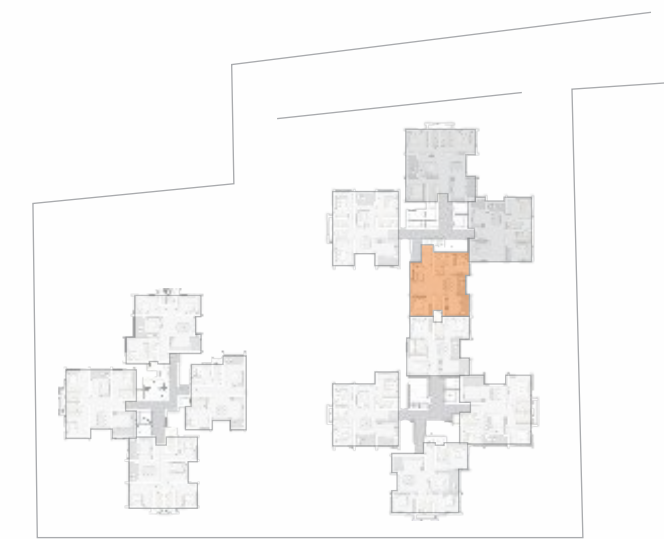




Block A - 3 North Facing
Area Statement (in sft.)

CARPET AREA	SBA
735	1165

KEY PLAN





Block A - 4 East Facing
Area Statement (in sft.)

CARPET AREA	SBA
1056	1645

KEY PLAN



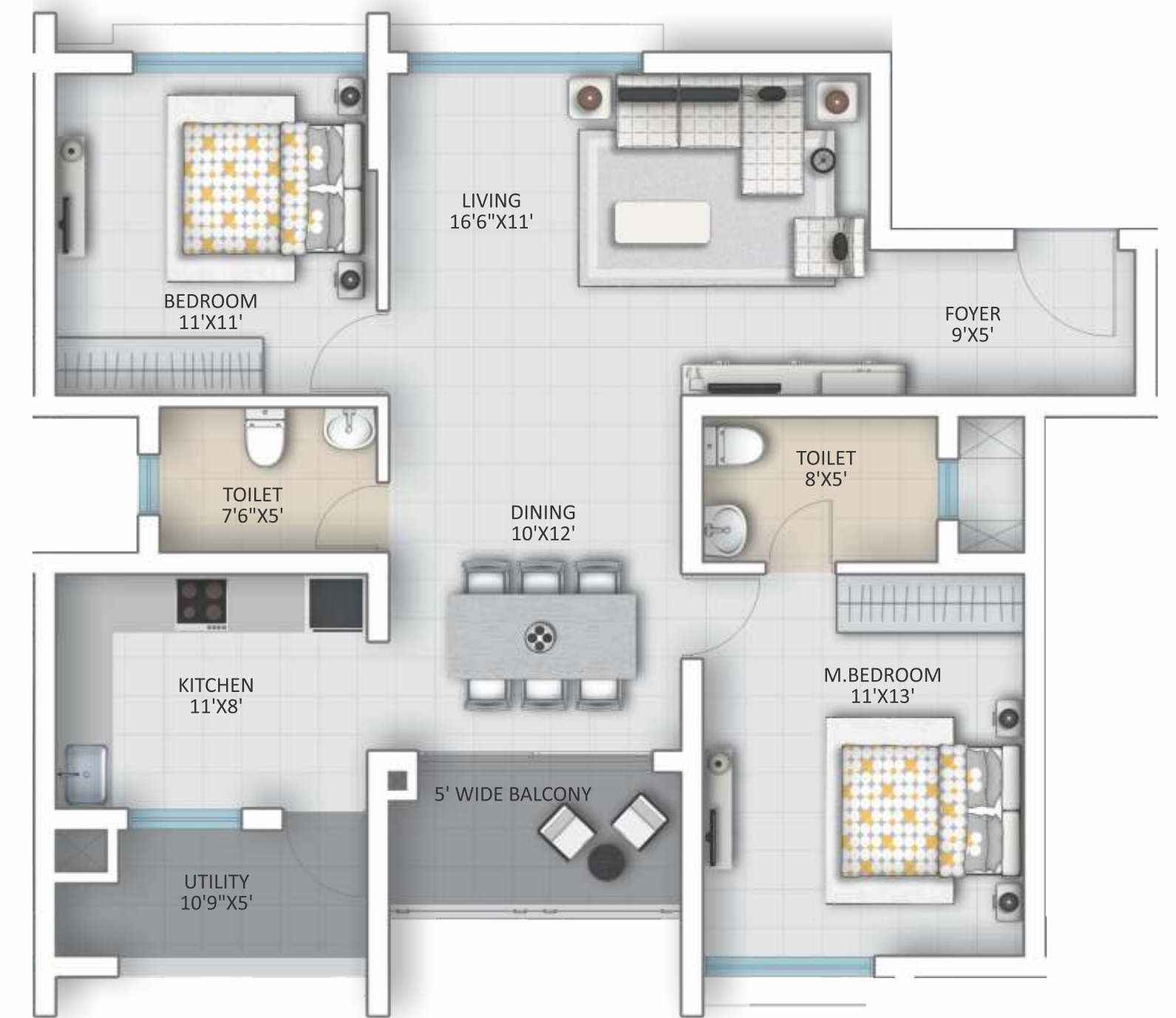
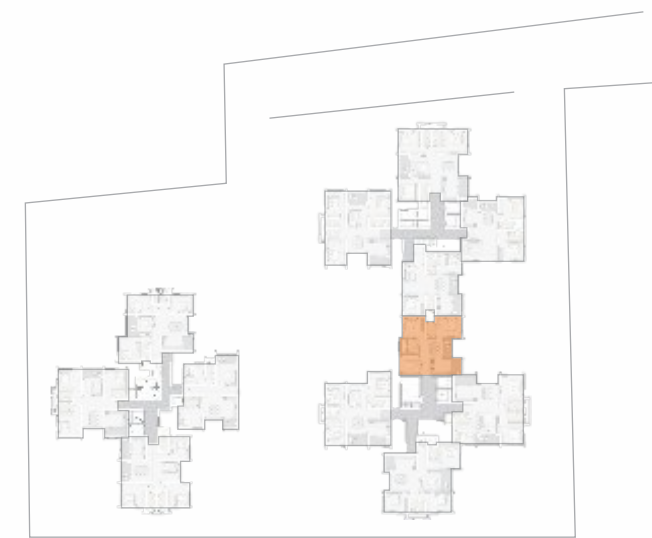


Block B - 1 East Facing

Area Statement (in sft.)

CARPET AREA	SBA
806	1240

KEY PLAN





Block B - 2 West Facing
Area Statement (in sft.)

CARPET AREA	SBA
990	1565

KEY PLAN





Block B&C - 3 North Facing

Area Statement (in sft.)

CARPET AREA	SBA
1080	1660

KEY PLAN





Block B - 4 East Facing
Area Statement (in sft.)

CARPET AREA	SBA
875	1335



KEY PLAN





Block C - 2 West Facing

Area Statement (in sft.)

CARPET AREA	SBA
885	1370



KEY PLAN





first
impressions
matter

Temple tree will offer private residences designed to the very highest standards. The towers will features imposing, double height entrance lobbies and offer spectacular view over bangalore.



STRUCTURE

R.C.C. Structure with Grade FE 500 quality steel and M25/M40 grade concrete.



SUPERSTRUCTURE

Cement blocks masonry with good quality blocks in cement mortar.



PLASTERING

External : Cement plastering with combination of texture and smooth finish.

Internal : Cement plaster with smooth finish.



DOOR

Main Door : Wood frame & Veneer shutter of good quality hardware of reputed make.

Internal Door : Wood frame with Veneer doors and hardware of reputed make.

French Doors : UPVC door frame with glass paneled shutters.



WINDOWS

UPVC Windows with float glass & provision for mosquito net.

BALCONIES

Steel railing with glass



FLOORING & WALL TILING

600mmX600mm size double charged vitrified tiles of reputed brand in all rooms.

Toilets

Flooring : Acid Resistant anti-skid ceramic tiles of reputed brand.

Wall : Glazed Ceramic tiles dado of quality make up to door height.

Utility / Wash

Wall : Glazed Ceramic tiles dado up to 3' Height.

Flooring : Rustic ceramic tiles of reputed brand.

Kitchen

Dadoing : Glazed Ceramic tiles dado up to 2' height above kitchen platform.

Platform : Black Granite platform with stainless steel sink with drainboard. Provision for one Kaveri water tap and one bore well connection tap.



CORRIDORS

Granite



STAIRCASE

Granite



PLUMBING & SANITARY

Water Supply : ISI mark GI/CPVC/PPR Piping.

Drainage : ISI Mark standard PVC/SWR Sanitary piping of Ashirwad/Astral or equivalent make.

Rain Water : Well-designed Rain water harvesting System provided.

Sewerage : Waste water treated by STP and reused for gardening.



ELECTRICAL

Wiring & Switches :

+ Concealed copper wiring of Finolex or equivalent make.

+ Modular switches of Legrand/Havells/Schneider or equivalent make.

+ Power Outlets for Air Conditioners in all Bedrooms.

+ Power Outlets for geysers in all Bathrooms.

+ Plug points for Chimney, Refrigerator, Microwave ovens, Mixer/grinders in Kitchen.

+ Plug points for Television in Drawing, Master Bed rooms & Telephone points in Drawing and Master Bedroom.

+ 3 Phase supply with individual meters. Separate Residential Circuit Breaker (RCBO) will be provided for light and power circuits at main distribution box within each flat.

+ F.M. - Radio Switch Module in Kitchen.



PAINTING

External : Asian Paint finish and two coats of weather proof paints of asianapex ultima or equivalent

Internal : Two coats of Birla Patti and Two coats of acrylic emulsion Asian paint over a coat of cement primer of reputed make.



TOILETS

Sanitary Fittings : All Toilets will consist of

+ One piece of EWC, wall mounted gabrit or equivalent, Wash basin of Cera/Hindware or equivalent make.

+ Thermostat single lever diverter with overhead shower.

+ Provision for geysers in all toilets.

+ All C.P. Fittings of Jaguar or equivalent make.

+ Hydro - pneumatic water pumps for water supply with equal pressure system for all floors.



GRILLS

MS enamel painted grills for windows.



ELEVATOR

+ Passenger & service lifts of suitable capacity in every block.

+ Entrance lobby with Granite.



GENERATOR

Full Backup for individual flats



TELEPHONE / COMMUNICATION

Video door phone facility to all the flats connecting security.

* Conditions Apply

get close
to
perfection

Beauty lies in the smallest details. It is these that make the big picture truly magnificent. From flooring to fittings, from windows to wall finish, every details is thoughtfully crafted to give you the best of comfort and offer you a more beautiful lifestyle.



Temple Tree

luxury apartments





take
centre
stage

The majestic towers at SB Temple Tree will play a pivotal role in the ever-evolving development of central Bangalore, establishing not only a new focal point, but a new destination at the very heart of the city.



repeatedly praised for bringing innovation

A young and dynamic company offering trendsetting real estate solutions, SB Urbanscapes has leveraged its expertise and foresight to achieve success in every project. Repeatedly praised for bringing innovation in housing spaces, the Bangalore based company's professional team is also focused on providing value for money properties that are a cut above the rest. Attention to details, superior craftsmanship and utmost quality form the pillars of this customer-centric organization.

Corporate Office
SB URBANSCAPES
4, Ground Floor, 9th Main,
13th Cross, HSR Layout,
6th Street, Bangalore - 560102.
Email : sburbanscapes@gmail.com

Site Address
Sy.No. 72, Bommanahalli
Village Begur Road,
Bengaluru, Karnataka - 560068.

ongoing projects



upcoming project



for more details **+91 80 25722255 / 25722233** www.surbanscapes.com

TEAM

Architects



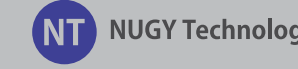
Structural Engineers



Landscape Designers



Electrical



PHC Consultants



RLA # 199257

This brochure is conceptual and has been prepared based on the inputs given by the project Architect, this may vary during execution. The Promoter reserves the right to change, alter, add or delete any of the specifications mentioned herein based on the site conditions and construction exigencies without prior permission or notice. Project specifications, as in the final agreement, shall be considered binding for the buyer as well as the Promoter. External colour schemes and landscape detailing may vary from the illustrations considering site conditions. Interior images and views of the surrounding neighborhood may not represent the actual as these could be digitally enhanced/ altered. Furniture shown in the plans is only for the purpose of illustrating a possible layout and does not form a part of the offering or specifications. All interior views do not depict the standard wall and ceiling colours, finishes and also are not part of the offering. Dimensions mentioned in the brochure.

