



PRESENTS

Earthen
AMBIENCE

PROJECT BRIEF



Earthen
AMBIENCE

EVANTHA
SRI DURGA

About Project

- 52 Boutique Villas
- A home with an ambience and identity
- Homes with designer-landscaped private gardens
- Double heights - A connected experience
- Low density close-knit community



BOUTIQUE HOMES
surrounded by green..

EARTHEN AMBIENCE is more than just a residential development.

Surrounded by green and inspired by natural materials, the project is conceptualized to offer a calm and soothing experience, creating its own microclimate away from the busy hustle of city life .



SOMETHING FOR EVERYBODY..

CONFIGURATION OF 3 / 4 BHK

We believe in a wholesome living experience for all.

While we build intimate connected communities, we also take utmost care to make everybody feel at home with what one does and experiences.

EXCLUSIVITY

It also has a green skylit garden in the interior which forms an integral part of the home and can be experienced from all levels on the inside.

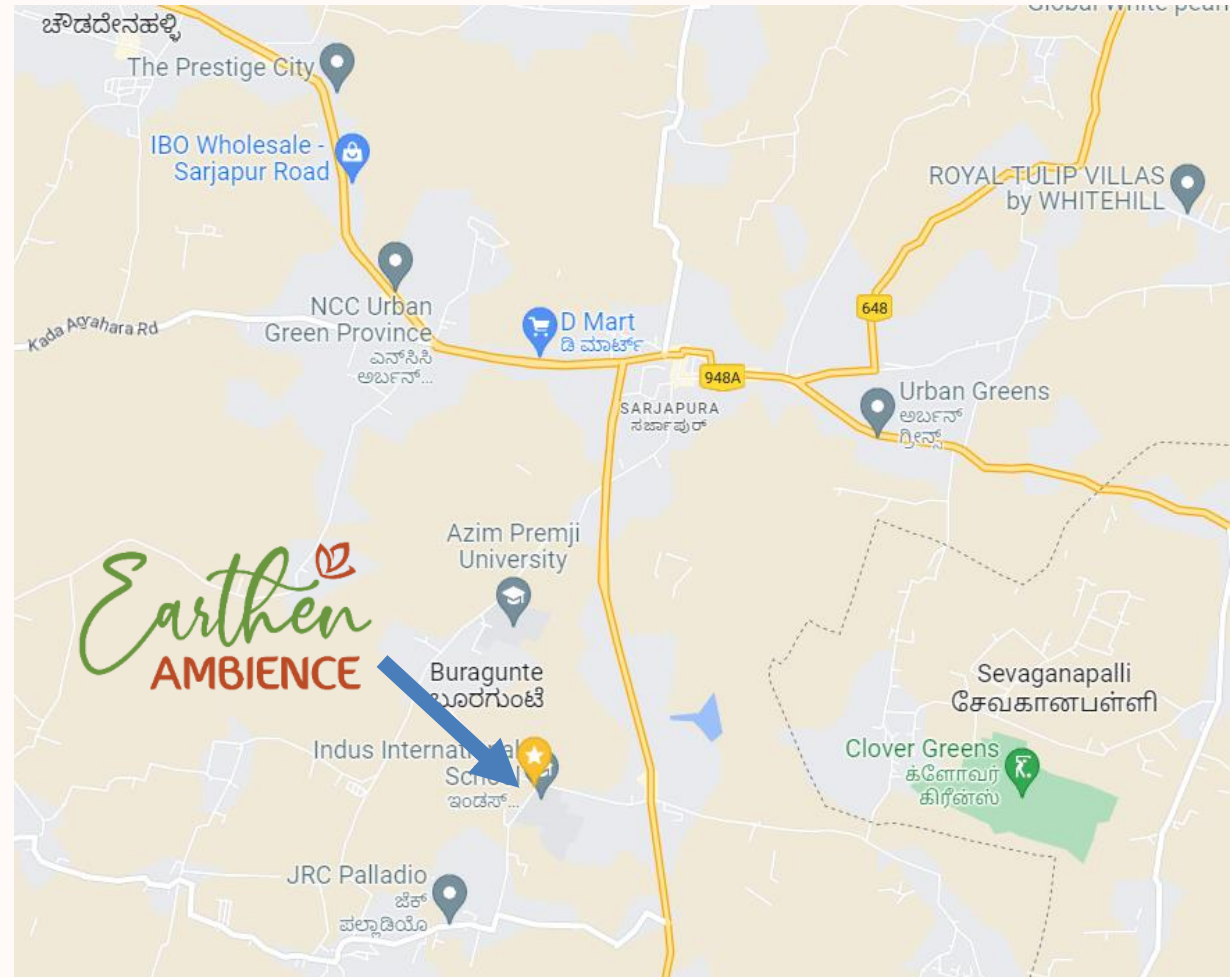


AMPLE AMENITIES

Earthen Ambience is provided with ample spaces and amenities for one and all keeping in mind the everchanging lifestyles and work situations today. A clubhouse with an infinity swimming pool, co-working space, library, gym, indoor amenities, kids play areas and a senior citizens' corner allow for unwinding spaces for all.

Located at 'New Sarjapur'

- Located on proposed 150ft Road
- 500m from upcoming Satellite Town Ring Road (STRR)
- Adjacent to Indus International School & Azim Premji University
- [Click here](#) for Google Location









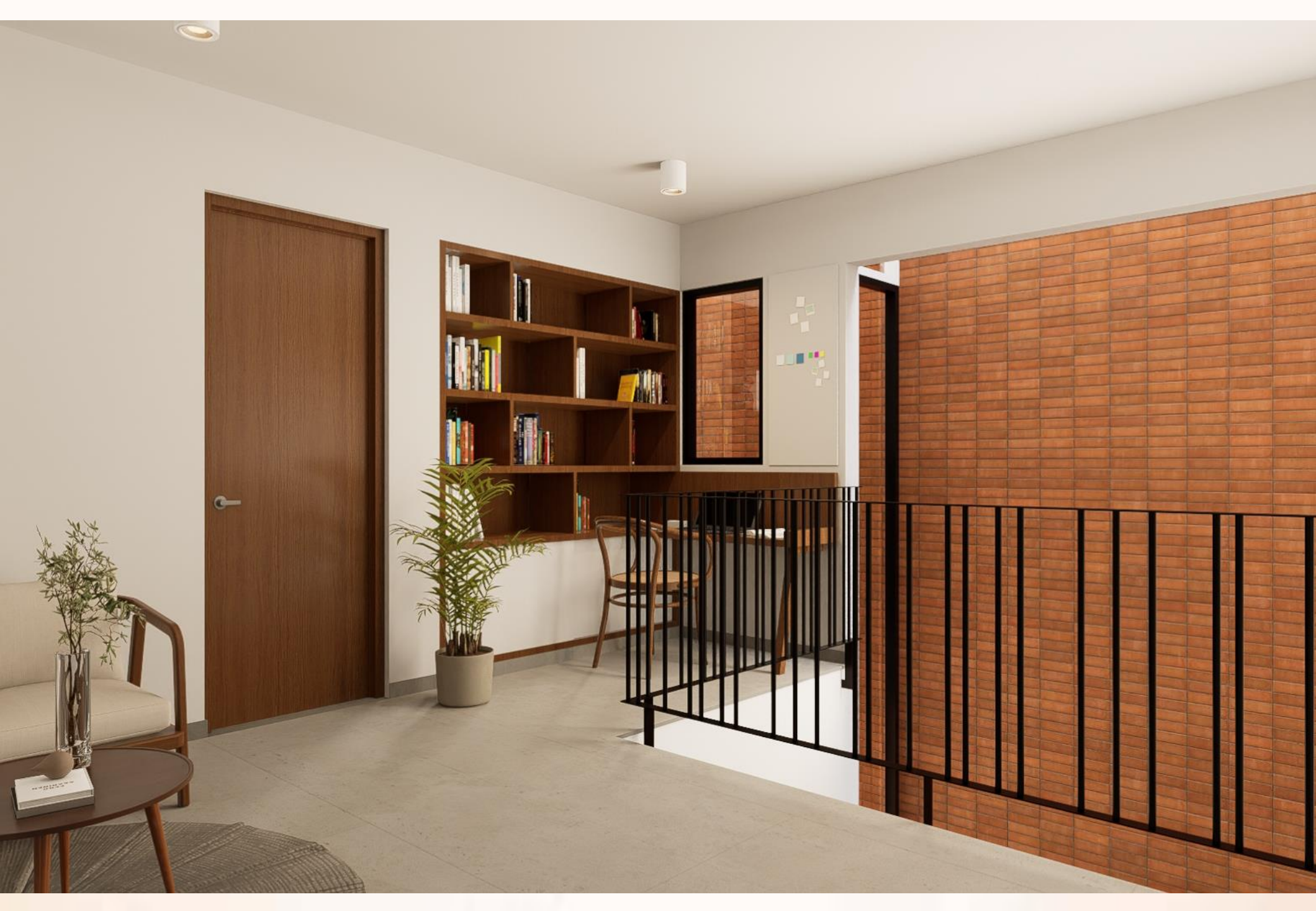


























be stock | #208

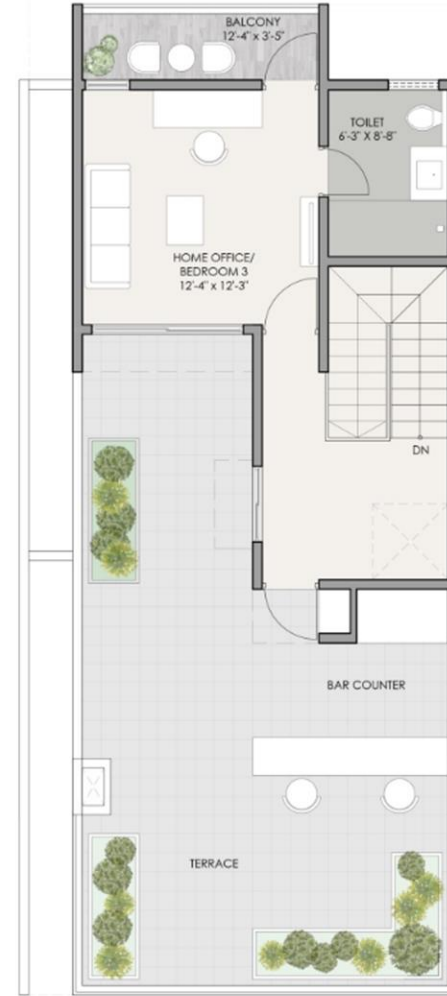
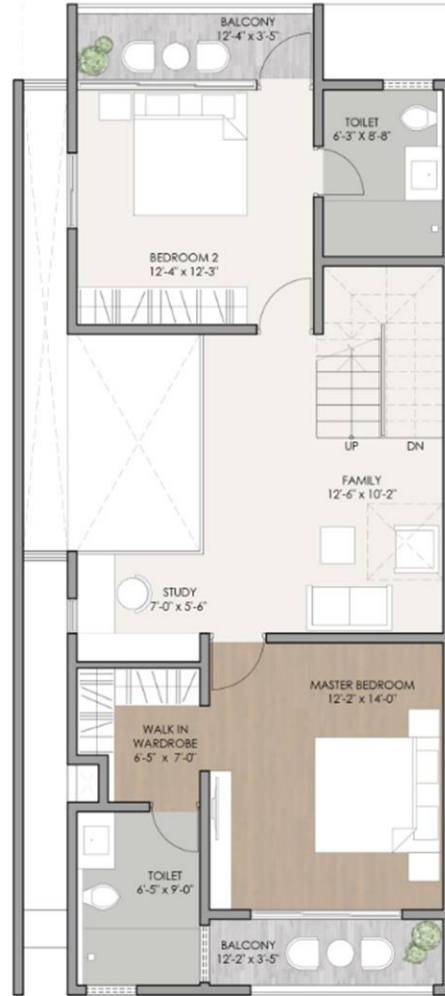
PLANS

MASTERPLAN



- | | |
|---|---|
| <ul style="list-style-type: none"> A. Main entry / exit B. Security cabin C. Visitor lounge and waiting area D. Pedestrian Entrance walkway E. Kid's Pick-up & drop zone F. Senior citizens corner G. Landscape planters for privacy H. Community chit chat corner I. Meditation and Yoga deck J. Sculpture court K. Bird bath L. Community interactive zone M. Play area with imprints N. Visitor's parking O. Reflexology track P. Green buffer | <ul style="list-style-type: none"> Q. Clubhouse <ul style="list-style-type: none"> • Infinity pool with covered deck • Toddlers's Pool • Gym • Library/Co-working space • Multipurpose hall • Table Tennis • Pool Table • Indoor games: Foosball, Board games, etc. • Steam / Sauna • Association / Maintenance office R. Kids play area <ul style="list-style-type: none"> • Rock climbing wall • Trampoline • Toddler's sand pit • Stepped seating overlooking kids play area |
|---|---|

TYPE 1

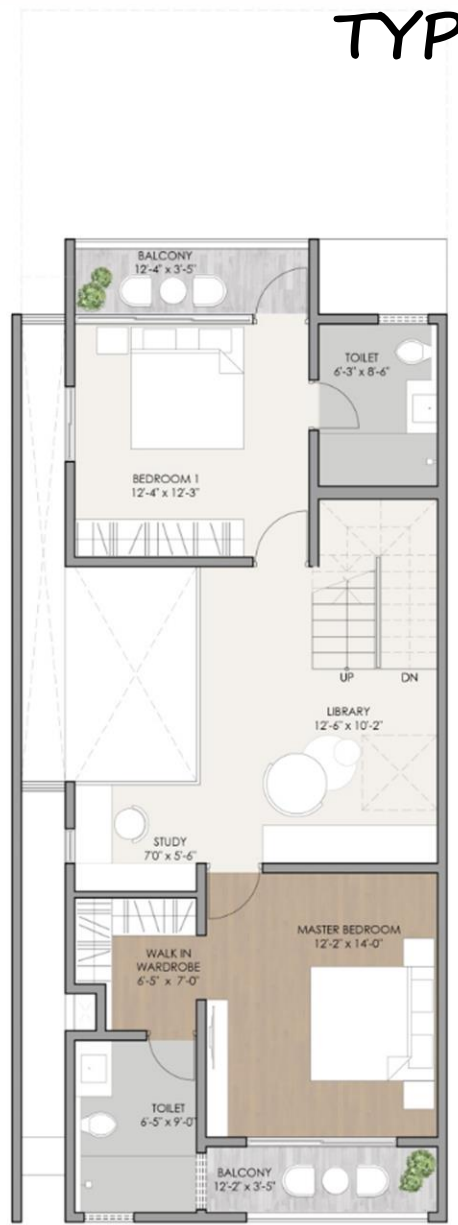


TYPE 2

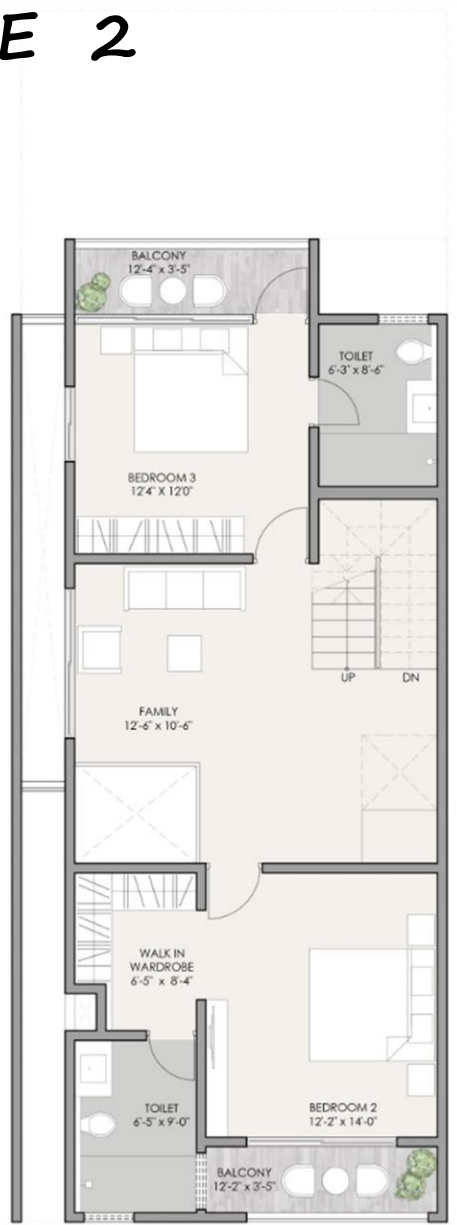
ROW HOUSING
TYPE 2 - 4BHK 2CP



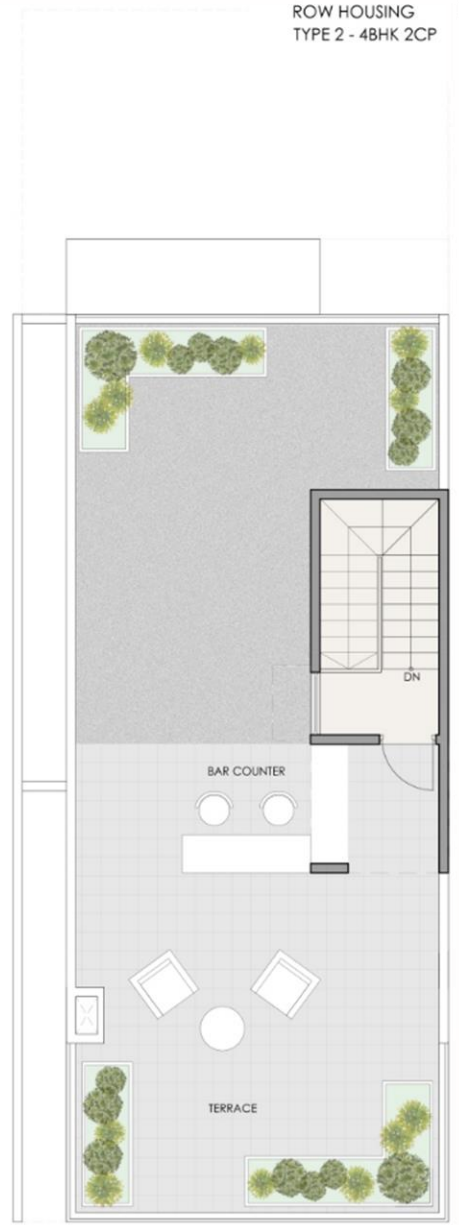
GROUND FLOOR PLAN



FIRST FLOOR PLAN



SECOND FLOOR PLAN

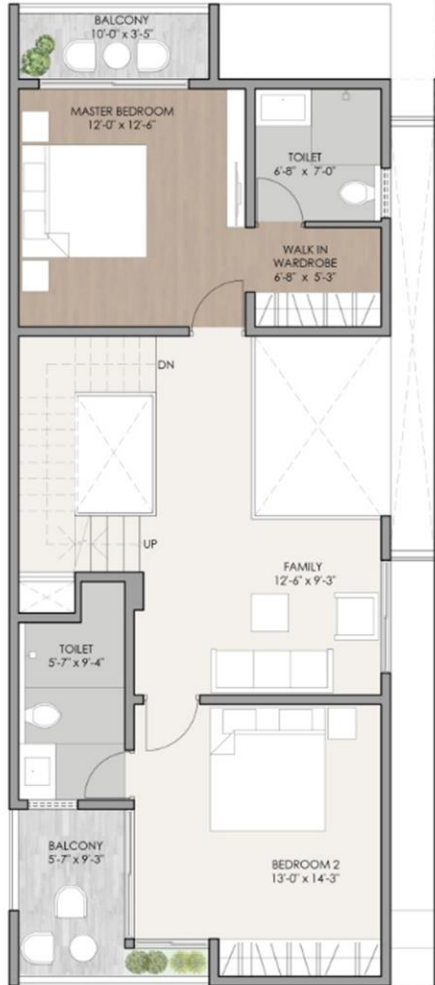
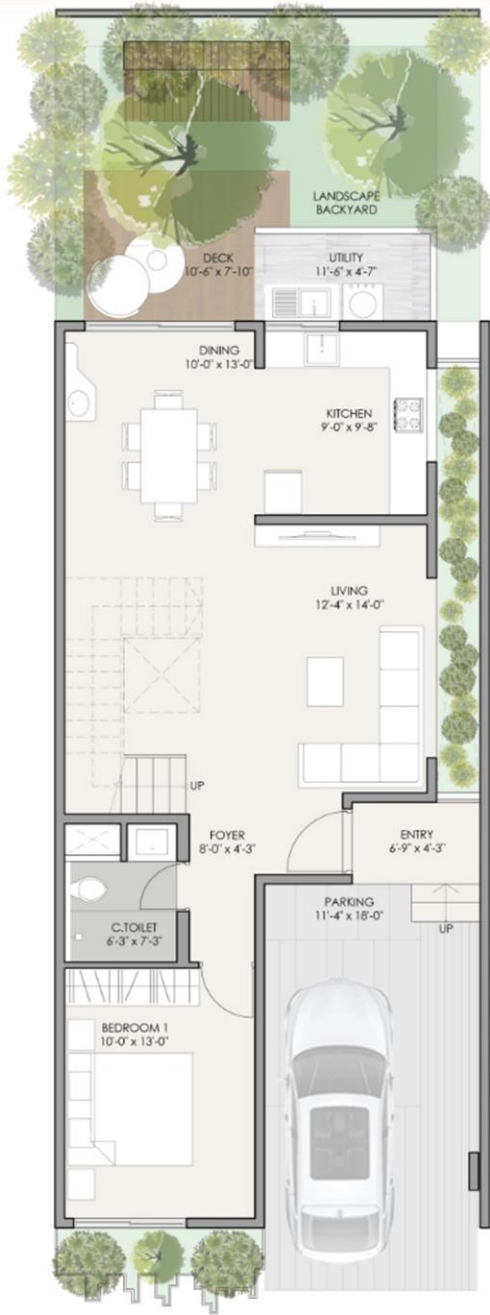


TERRACE FLOOR PLAN



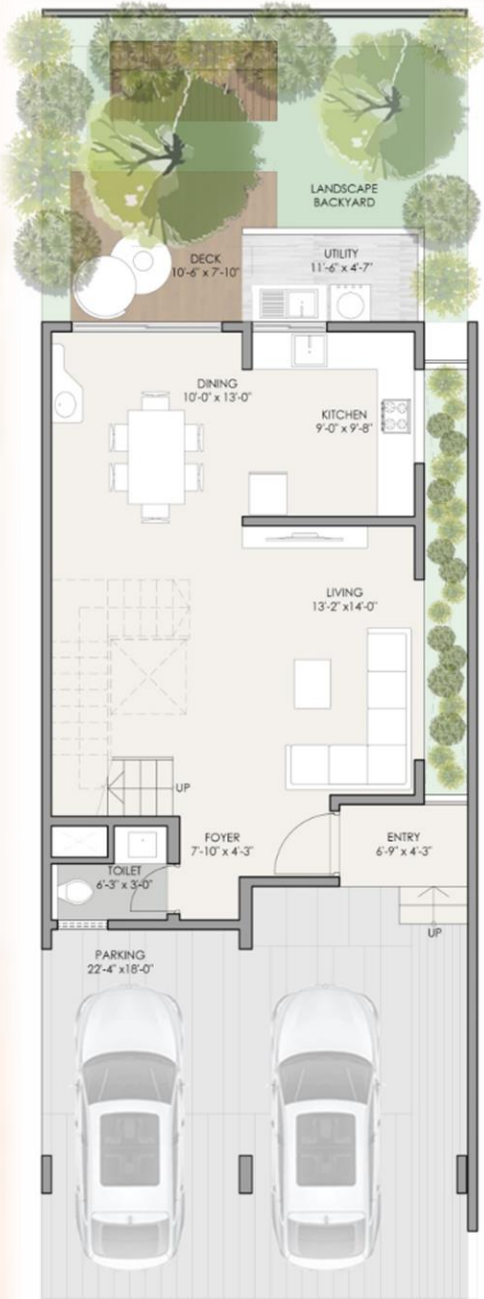
TYPE 3

ROW HOUSING
TYPE 3 - 4BHK 1CP

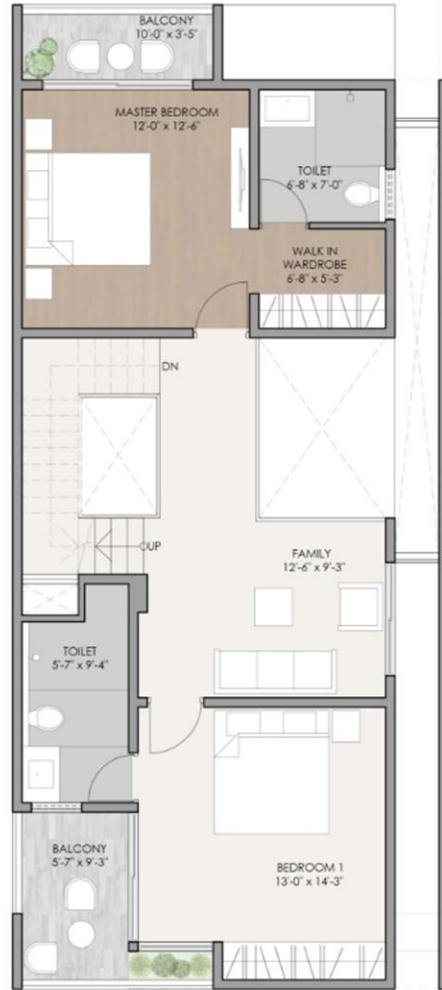


TYPE 4

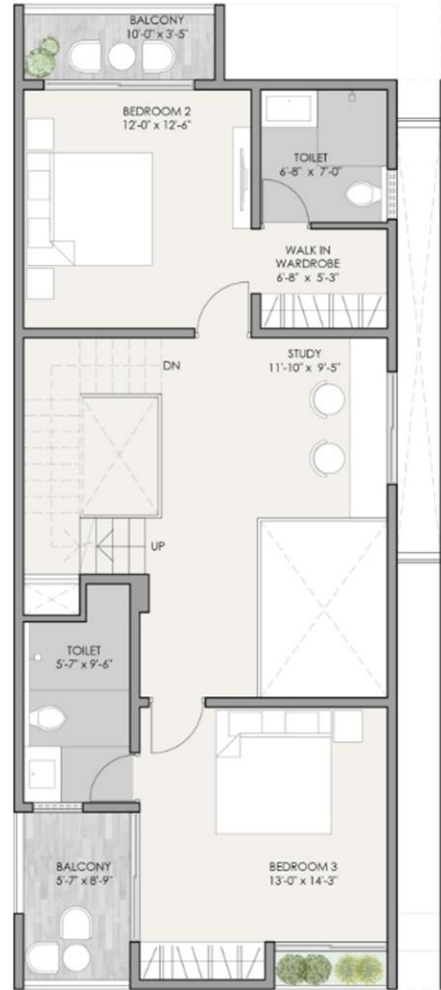
ROW HOUSING
TYPE 4 - 4BHK 2CP



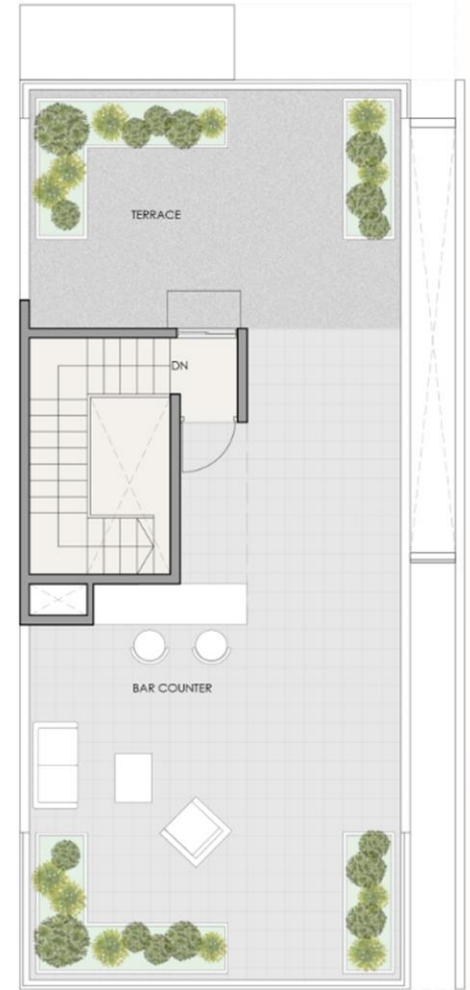
GROUND FLOOR PLAN



FIRST FLOOR PLAN



SECOND FLOOR PLAN

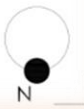
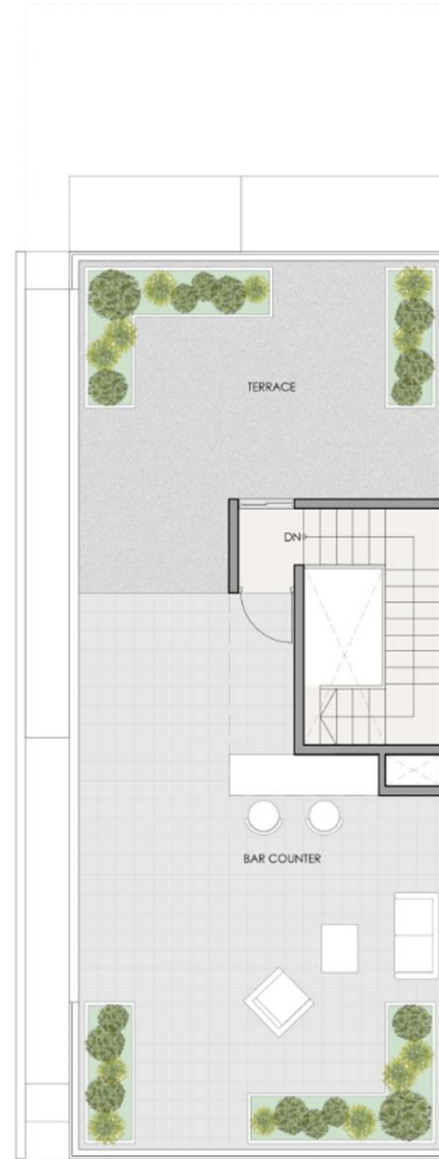
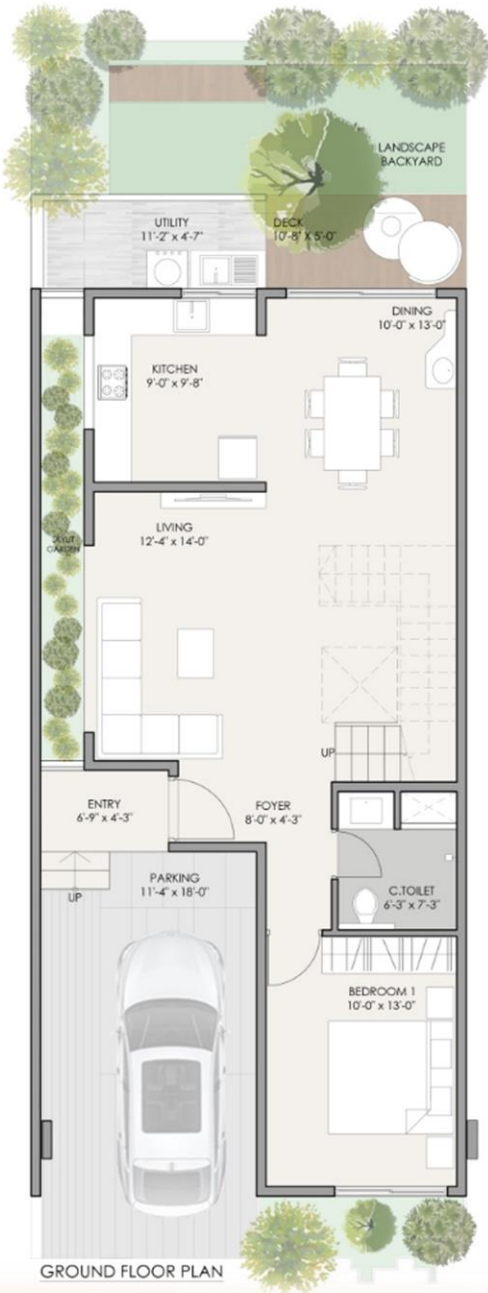


TERRACE FLOOR PLAN



TYPE 5

ROW HOUSING
TYPE 5 - 3BHK 1CP





CONTACT

- For enquiries & site visits, call us at



Thank you



Commitment is what transforms a promise into reality.

Evantha Sri Durga is a well-known real estate development firm situated in Bangalore. Our pursuit of excellent quality and one-of-a-kind designs that are gracefully combined to create contemporary structures is what distinguishes our projects. With decades of construction experience behind us, we strive to make your vision a reality.