



TREELANDTM
A Premium Residential Township



DESIGNED BY /motocreative.com



📍 Site / Corporate Office Address
Treeland, Survey No: 21, Nr. Serene Meadows,
Gangapur Rd, Nashik

🌐 www.abhdevelopers.com



SCAN TO CONNECT



Rera No. P51600025058



Always Building Happiness

Built on the virtuous foundation of quality, innovation & trust, ABH believes in Always Building Happiness. With 25+ years of industry experience of Atal, Bagmar & Hanswani, ABH Developers is Nashik's one of the most trusted and reputed real estate developers.

3500000+
Sq. Ft. Developed

3000000+
Sq. Ft. Under Construction

600+
Happy Residents

175+
Happy Businesses



GANGAPUR ROAD

Nashik's Noteworthy Neighbourhood

The wine capital of India, Nashik has gradually emerged into a potential investment destination. The smart city's hotspot location, Gangapur Road provides seamless connectivity and proximity to surrounding areas and cities. Along with finest and excellent educational, manufacturing and infrastructure hubs, Gangapur Road offers pleasant weather, safe and secure environment.

Image shot on location.



TREELAND®



ARTISTS IMPRESSION

A LAND WHERE LIFE GROWS ON YOU



WELCOME TO TREELAND

Your future in the heart of nature...

Planned and developed for a complete living experience, Treeland seeks its inspiration from nature, and the project is designed and built around it. With the calm Godavari River on one side offering peacefulness to the project, the lush green cover enveloping the estate will give you much-needed relief from the din of urban life.

Furthermore, the thoughtfully designed residences here, with special focus on meaningful amenities, will only make living here a truly relaxing experience. Come home to Treeland, and let the good life grow on you.

Image shot on location.

EMBRACE TREELAND

A life breathing purity and peace



18

ACRES PROJECT



3000+

TREES



900+

FLATS



25

FLOORS



3

CLUBHOUSES



55+

AMENITIES



60%

OPEN SPACE

40%

CONSTRUCTION



3.5

ACRES OF PRIVATE PARK



800M

RIVERSIDE JOGGING TRACK



2/3/4

BHK PREMIUM APARTMENTS






UNCOVER
NATURE ALONG
THE PERIPHERY

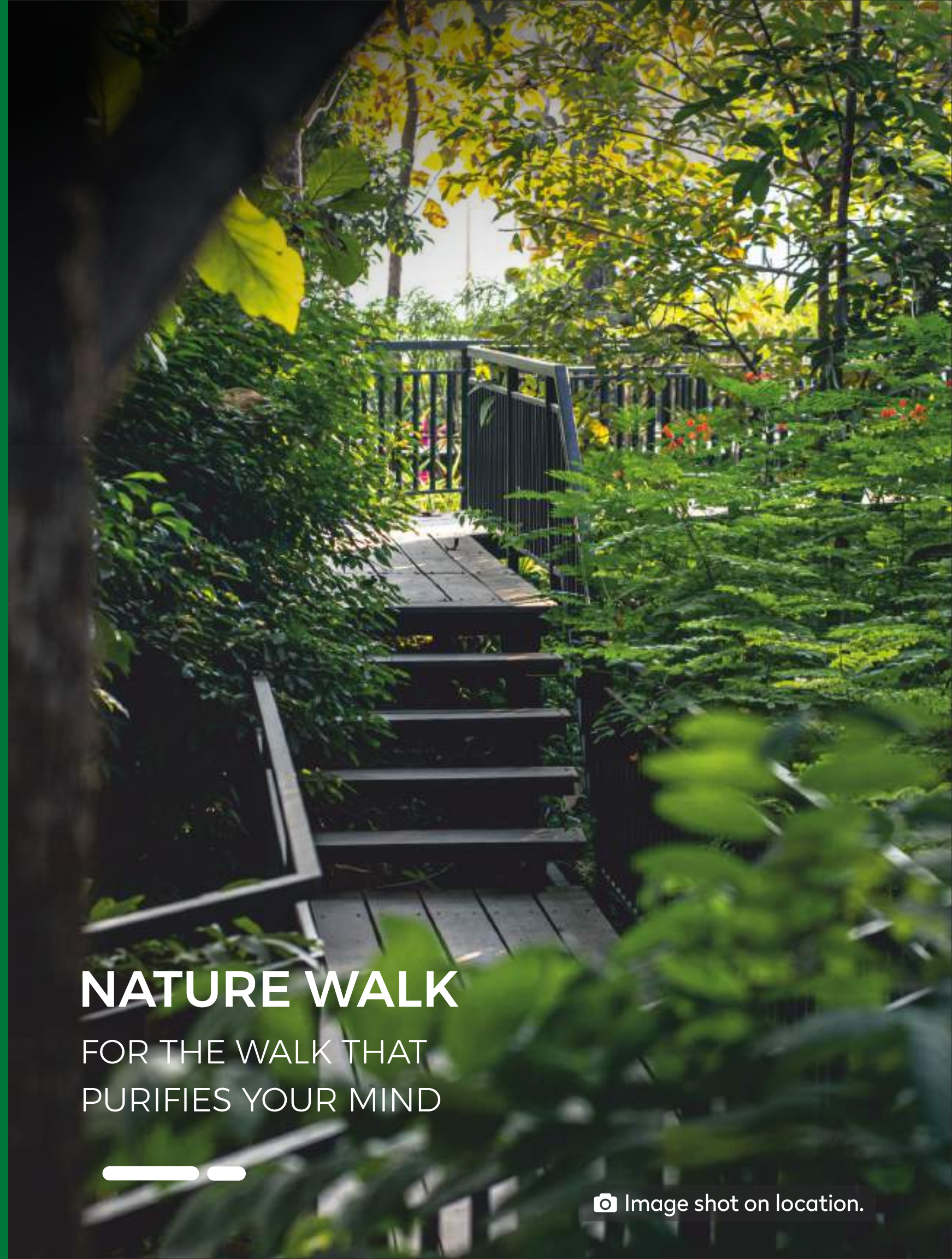


NATURE WALK

FOR THE WALK THAT
PURIFIES YOUR MIND



 Image shot on location.



GODAVARI RIVER

FOR YOU TO ENJOY
DIVINE CALMNESS



📷 Image shot on location.

Luxury in
Nature



Fruit Garden



Nature Walk



Aroma Garden



Tree Deck



Oxygen Park



Tree Plaza



Senior Citizen Corner
with newspaper facility



Acupressure walkway



Meditation Area



Urban Forest



Instrumental Garden




River view sit outs

3000+ TREES

FOR YOU TO BREATHE
FRESH AIR EVERY MOMENT



 Image shot on location.

**LIFE WITH WONDERFUL
NEIGHBOURS**

FOR YOU TO EXPLORE
NATURE AT 360°



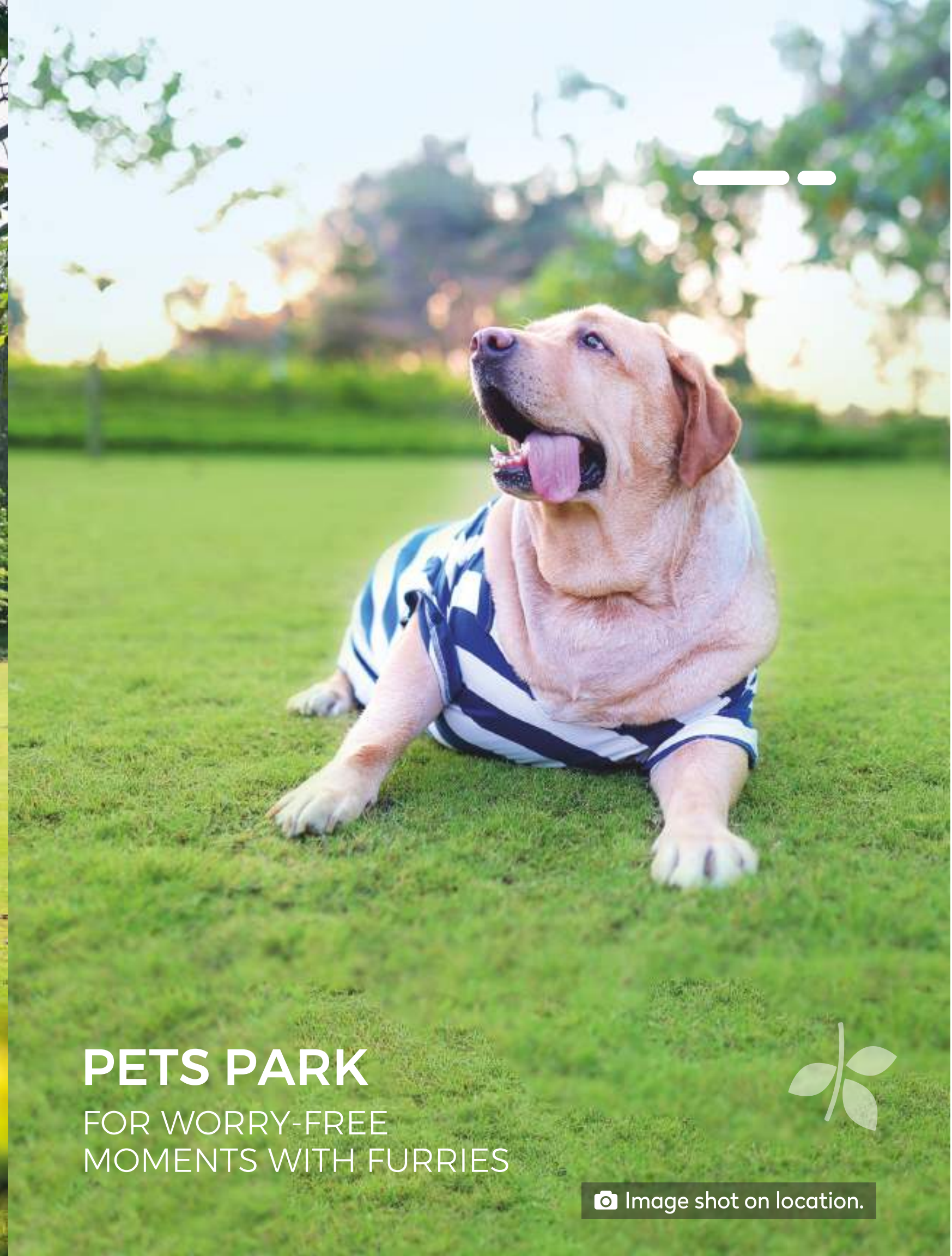
 Image shot on location.

3.5 ACRES OF PRIVATE PARK

FOR YOU TO UNWIND IN BOUNTY OF GREENERY

SHOT ON LOCATION

 Image shot on location.



PETS PARK

FOR WORRY-FREE MOMENTS WITH FURRIES



 Image shot on location.

RIVER-SIDE JOGGING TRACK

FOR YOUR PHYSICAL
& MENTAL UPLIFTMENT



Image shot on location.

LAWN TENNIS COURT

FOR YOUR
RECORD-BREAKING
INNINGS



Image shot on location.

LUXURY IN LIFESTYLE



800 M River Side
Jogging Track



Amphitheatre



Mini Theatre



Open Air
Cafeteria



Library



Outdoor Green gym



Outdoor Games



Pets Park



THOUGHTFUL LUXURY

FOR YOUR
TOP-OF-THE-LINE
LIFESTYLE

📷 Image shot on location.

LUXURY IN INFRASTRUCTURE

🌱 Carbon Free Homes

🏠 Space Utilization

📡 Fiber Optic Connection

🕒 Vastu Complaint

🚗 EV Charging Points



A **Futuristic View** of living is what made us choose our dream home at Treeland.

-Mrs. Maheshwari

Life at Treeland promises
A lot more than just the four walls.

Mr. Abhik Wadhwa

**The place has Immense Positivity,
Scenic Beauty and Good Vibes.**
People are warm and welcoming.

-Mrs. Anand Kankaria





MAPLE - THE CLUB HOUSE

Image shot on location.

CLUB HOUSE

FOR YOU TO LIVE EVERYDAY,
BEYOND EXTRA-ORDINARY



MAPLE - THE CLUB HOUSE

Image shot on location.

Luxury in Retreat



Banquet Hall



Party Lawn



Guest Rooms - 5



Swimming Pool



Kids Swimming Pool



Gym



Indoor games




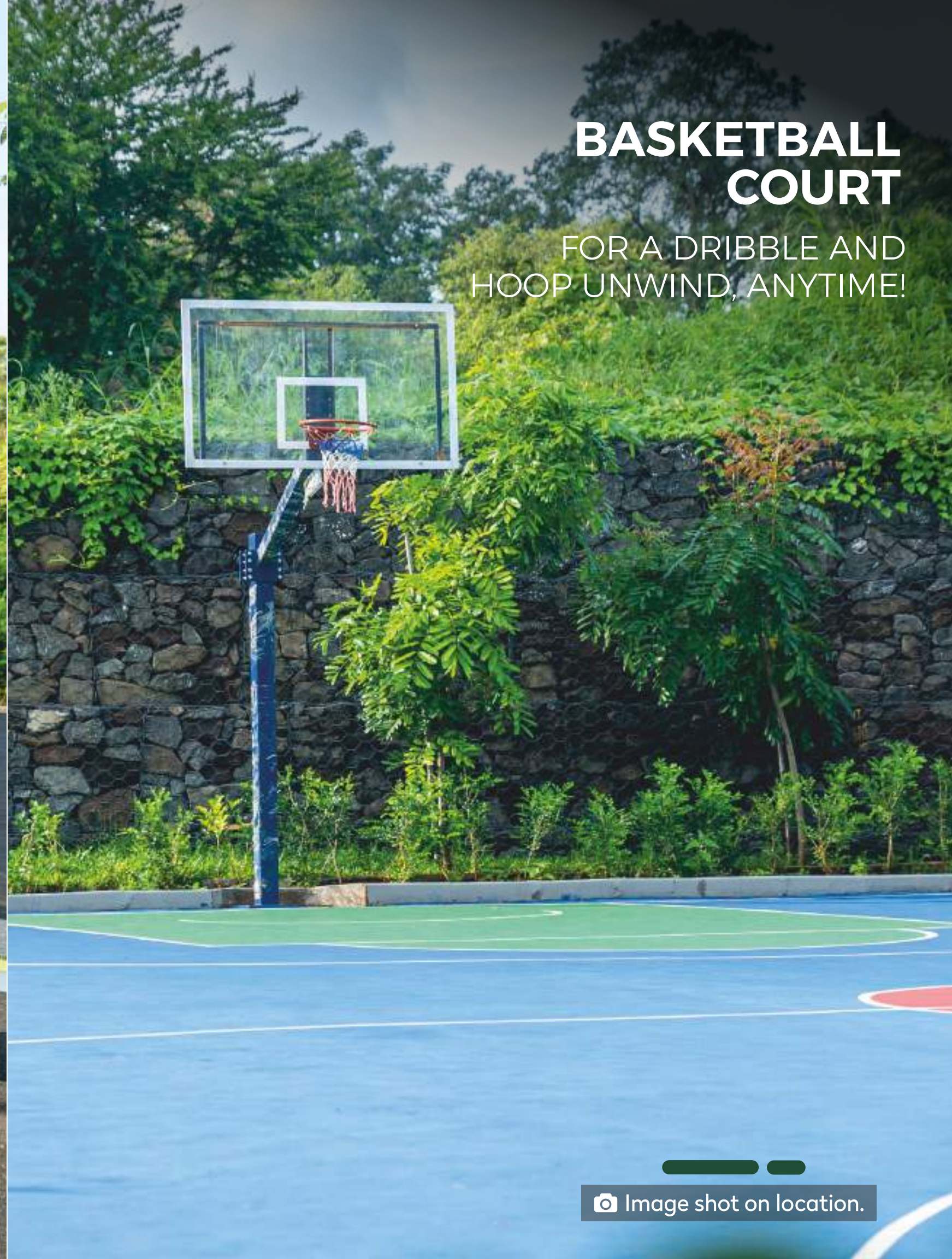
Multi-Purpose Room
for Yoga & Aerobics



CROSSFIT AREA

FOR A POWER-PACKED
FITNESS REGIME!

 Image shot on location.



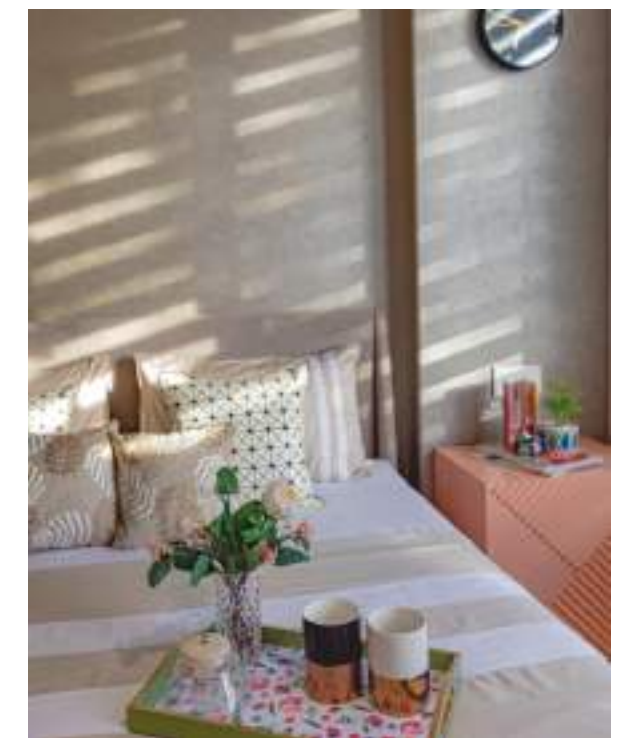
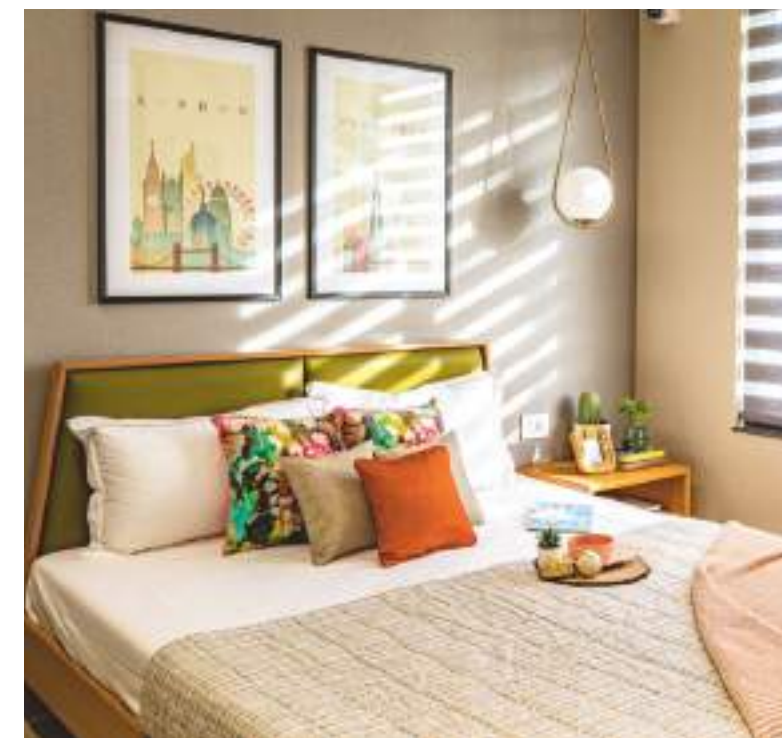
BASKETBALL COURT

FOR A DRIBBLE AND
HOOP UNWIND, ANYTIME!

 Image shot on location.

SPACE & EXCLUSIVITY

FOR YOU TO CHERISH FOR A LIFETIME



READY SAMPLE FLAT

Image shot on location.

55+ AMENITIES

A TREASURE FOR EVERYONE



800 Mts. Jogging Track	Aroma Garden	Fully Equipted Gym (5000 Sq.ft.)	Indoor Games (5000 Sq. ft.)	Swimming Pool 1 & 2
Open Lawn (75,000 Sq.Ft.)	Party Lawn	Multi Purpose Hall	Guest Room - 5	Turf - Net Cricket
Nature Walk	Mini Theatre	Business Center	Basketball Court	Car Washing Area
Open to Sky Amphitheatre	Acupressure Path	Instrumental Garden	Stretcher Elevators for each building	Cycle Track
Ganpati Temple	Lawn Tennis Court	Library	24x7 Security with CCTV Surveillance	Banquet Hall 1 & 2 (Maple Oak)
Trampoline Park	Open to Sky Cafeteria	Fruit Garden	Butterfly Garden	Sitting Gazebo
Pets Park	Green Gym	Multipurpose Play Court	Children Play Area	Medicinal Garden
River Side Sitouts	Meditation Area	Video Door Phone	Yoga & Aerobics Room	Senior Citizen Corner

CARBON FREE HOMES

FOR A STRESS FREE LIFE



The architecture of Treeland has been intelligently conceptualized to provide its residents the joy of living amidst blissful nature and simultaneously create a positive impact on surrounding environment. Treeland adopts an eco-friendly process which ensures energy efficiency, sustainability of construction & careful usage of natural resources, throughout the building's life cycle.



Airy Environment



Energy Efficiency



Better Quality of Living



Enhanced Daylight



Resources Conservation

At Treeland, some of the common amenities are integrated with eco systems to nurture a green community and enrich resident's well-being.

Rain Water Harvesting	Sewage Treatment Plant	Organic Waste Converter	LED Lights	Solar Powered Common Area	Environmental Friendly Products
Electric charging points in each car park	All in One Dish	Fiber Connected Homes	D G Backups for Common Areas & Elevators	Garbage Chute for each Wing	



METICULOUSLY PLANNED

dynamics in every detail

External Amenities

ENTRANCE:

- Double height designer lobby.

ELEVATOR:

- Two fully automatic high speed stretcher elevators.

ELECTRIC & POWER BACKUP:

- Silent generator of adequate capacity for lifts, water pumps & common facilities.
- Designer standard light fitting in common passage and campus.

STRUCTURE:

- Earthquake resistant R.C.C. frame structure. Internal walls 4" thick & External walls 6" thick by Fly Ash Bricks/ Block Masonry.

RENEWABLE ENERGY SOURCE:

- Solar powered common lighting.

WASTE AND WATER MANAGEMENT:

- Sewage treatment plant.
- Rain water harvesting.
- Organic waste converter.
- Garbage Chute

PARKING:

- Allotted car parking for each flat.
- EV-charging points

SECURITY:

- 24 X 7 High end security.
- Intercom connectivity in flats, security cabins & lifts.
- CCTV camera surveillance in campus.
- Video door phone.
- High tech fire fighting systems with sprinklers in campus and each flat.



Internal Amenities

FLOOR FINISH:

- Vitrified PGVT Flooring 800 X 800 mm in living Room, kitchen & all bedrooms Zealtop/RAK.
- Antiskid Flooring in balcony, terrace, bathroom and utility area.

KITCHEN:

- Vitrified Slab by RAK kitchen platform with stainless steel sink by FRANKE
- 600 X 600 mm high quality tile dado up to lintel level.
- Provision for R.O. water purifier.
- Provision for gas pipeline.

WASH & UTILITY:

- 600 X 600 mm Flooring and dado with adequate electrical and plumbing points.

BATHROOMS/ TOILETS:

- Decorative high-quality 600 X 1200mm glazed tiles up to lintel level.
- Sanitary ware in all toilets by Duravit.
- C.P. fittings in all toilets by Jaquar.
- CPVC concealed piping by ASTRAL/ Prince and PVC piping for drainage supply.

DOORS AND WINDOWS:

- Designer 32 mm laminated main door (both side) with plywood frame provided with premium make lock and fittings.
- All Window openings provided with 2 track UPVC System windows with mosquito net.

WALL SURFACE:

- Premium Emulsion colour on walls, ceiling and weather shield paint on exterior walls by Asian Paints.
- External wall finish with double coat plaster & internal walls with gypsum plaster.

ELECTRICAL:

- Sufficient points in concealed copper wiring by LAPP and modular switches by LEGRAND.
- Switchgear.
- Provision of 5 star rated geyser for all attached bathrooms.

TELEVISION, INTERNET & TELEPHONE:

- Convenient provision for WIFI, telephone and television points in each flat.
- Fibre-enabled.

OUR PARTNERS

in Finishes & Fixtures



Steel Bars



POLAAD is one of the most qualified brands in steel bars. TMT/QST bars of FE550/FE550D are corrosion-resistant, earthquake resistant, ductile, and come with superior welding strength. The round shape bars possess uniform strength and assure safety in all types of building construction.

Cement



ULTRATECH's cement range carry stringent standards and are top-rated for their unrivaled quality. Ordinary Portland Cement 53 grade gives vital strength to RCC structures.

Door Plywood



Kalpataru Plywood is an ISO 9001: 2000 company and India's largest door producer. Their best-in-class quality features are recommended by architects and interior designers.

Adhesive Bond



PIDILITE - Fevicol is India's Most Trusted Brand of Adhesives. Fevicol provides better coverage, even strength and protects furniture from de-bonding even when exposed to water..

CCTV & Video Door Phone



HIKVISION is the world's leading provider of IoT solutions and video security systems for real estate. Its innovative technology of CCTV surveillance and Video Door Phone is integrated throughout the community of Treeland and in every flat, respectively.

Door Locks



Dorset is the best door lock company and largest oem door lock manufacturer in India. It provides maximum security and is strong and durable.

Flooring



RAK is one of the largest and premium ceramic brands in the world. Their high-gloss vitrified tiles are stainless, skid-resistant, offer an italian finish to the flooring and retain their posh look for a long time.

Wall Finish Paint



ASIAN Paints' premium satin finish with gypsum plaster gives a smooth finish to indoor walls. External walls are painted with Apex to sustain extreme weather conditions.

Switches



LEGRAND's switches are quality-assured and perform convenient functions while adding a touch of class to your lifestyle. Due to its electric-shock resistance and protection features, it's one of the most trusted brands for home automation.

Electrical MCB/ELCB



LEGRAND's modular circuits fit seamlessly within energy distribution set-ups and ensure electrical protection against faults. They comply with stringent quality certification standards.

Wires



LAPP is a leader in cable and connection technology. Their wires possess high-conductivity, are safe and energy efficient.

Windows Glass



Saint Gobain is one of the most preferred companies when it comes to heat, UV and pressure resistant glass. Their products add a natural aesthetic to the decor and provide indoor comfort.

Pipes



Astral Pipes is the best CPVC pipes manufacturers company in India, offering excellent products for plumbing and drainage systems. Their innovative products are favorable for both hot and cold piping.

Kitchen Sink



Franke sinks are made from premium quality material, which looks stunning and is highly resistant to staining, rust and corrosion.

CP Fittings



Jaquar is India's leading bath fittings manufacturer, popular for its unique and aesthetic product design. A great shower with Jaquar' thermostatic diverter makes you feel energized throughout the day and helps you de-stress.

Sanitary Ware



Duravit's high-quality sanitary ware assure maximum rest, comfort and relaxation. Their innovative fluid mechanics ensure maximum efficiency and with an easily accessible rim area, the bowl is particularly easy to keep clean.

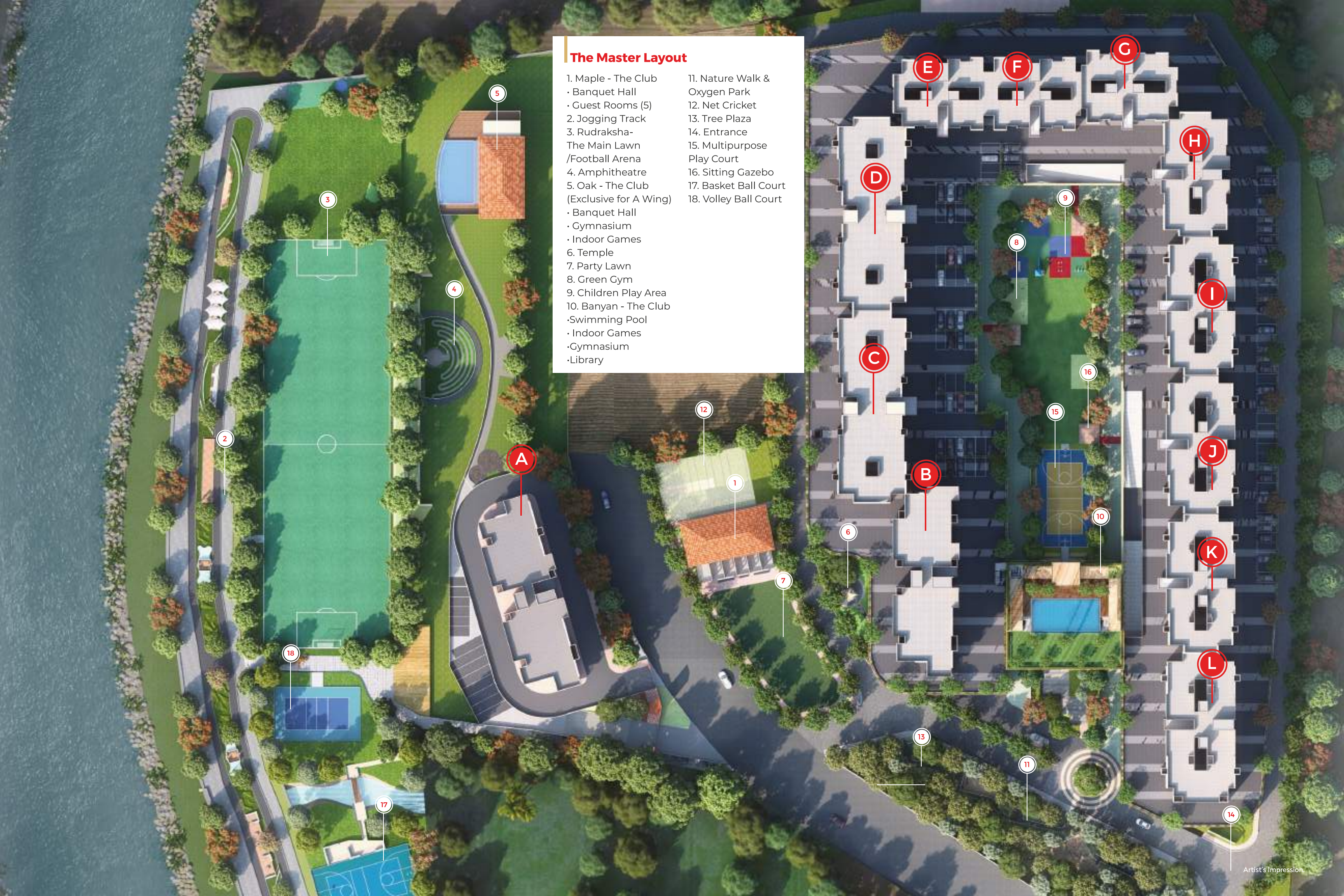
Elevators



KONE delivers the best user experience with a remarkable ride comfort and an economical solution with multiple savings. Their smart elevators are aesthetic, safe and futuristic with proactive maintenance for Treeland's community.

The Master Layout

- | | |
|--|----------------------------------|
| 1. Maple - The Club
· Banquet Hall
· Guest Rooms (5) | 11. Nature Walk &
Oxygen Park |
| 2. Jogging Track | 12. Net Cricket |
| 3. Rudraksha-
The Main Lawn
/Football Arena | 13. Tree Plaza |
| 4. Amphitheatre | 14. Entrance |
| 5. Oak - The Club
(Exclusive for A Wing)
· Banquet Hall
· Gymnasium
· Indoor Games | 15. Multipurpose
Play Court |
| 6. Temple | 16. Sitting Gazebo |
| 7. Party Lawn | 17. Basket Ball Court |
| 8. Green Gym | 18. Volley Ball Court |
| 9. Children Play Area | |
| 10. Banyan - The Club
·Swimming Pool
· Indoor Games
·Gymnasium
·Library | |



CONNECTIVITY

For you to stay connected with everything you love.

Schools

- Wisdom High International – 1.7 kms
- Horizon Academy – 4.4 kms
- Fravashi Academy – 6.3 kms
- Fravashi International Academy – 9.3 kms

Colleges

- RYK & BYK – 4.2 kms
- R.H. Sapat – 4.5 kms
- K.T.H.M. – 5.6 kms
- JIT – 6.4 kms

Hospitals

- Shri Guruji – 2.7 kms
- Nerliker – 2.9 kms
- NIMS – 3.8 kms
- Magnum Heart Institute – 4.6 kms

Restaurants

- Veg Aroma – 2.1 kms
- Bon Vivant – 5.0 kms
- BLVD – 5.0 kms
- Sula Vineyards – 7.4 kms

Worship

- Someshwar Mahadev Temple – 1.8 kms
- Navshya Ganpati Temple – 850 mts

Shopping & Entertainment

- D Mart- 1.9 Kms
- Nilesh Super Market - 2.1 Kms
- Shraddha Mall – 4.7 kms
- MovieMax Theatre – 5.5 kms
- Westside – 6.0 kms
- Nashik City Centre Mall – 6.1 kms

