

Developers:



**ESHANTI SIRA**  
LUXURIOUS LIVING SPACE  
2 & 3-BHK LUXURIOUS FLATS

**Note :** Documentation charges, stamp duty, all municipal taxes, MGVCCL Deposite, service tax, Tds etc will be separate - Each member needs to pay maintenance deposits separately - In the case of booking cancellation 25% of the booking amount plus extra expenditure will be deducted from booking amount - Amount will be refunded after the booking of same flat - Possession will be given after one month of settlement of accounts - Extra work at the cost of client with prior estimate needs to be given in advance - The developers reserve the full right to make any change - Terrace rights will be bound to developers only - This brochure does not from a part of agree- ment or any legal document. It is for easy display of the project

**Mode of Payment :** - 25% Booking Stage - 10% Plinth Level - 10% 1st Slab - 15% 2nd Slab - 15% 3rd Slab - 10% 4th Slab - 10% Flooring - 5% Finishing

Site:

Chhani Main Road,  
Nr. Sitaram Market,  
Vadodara.

Contact us:

**97142 77767, 98980 50515**

Architect :

Ruchir Sheth (Design studio)

Structure:

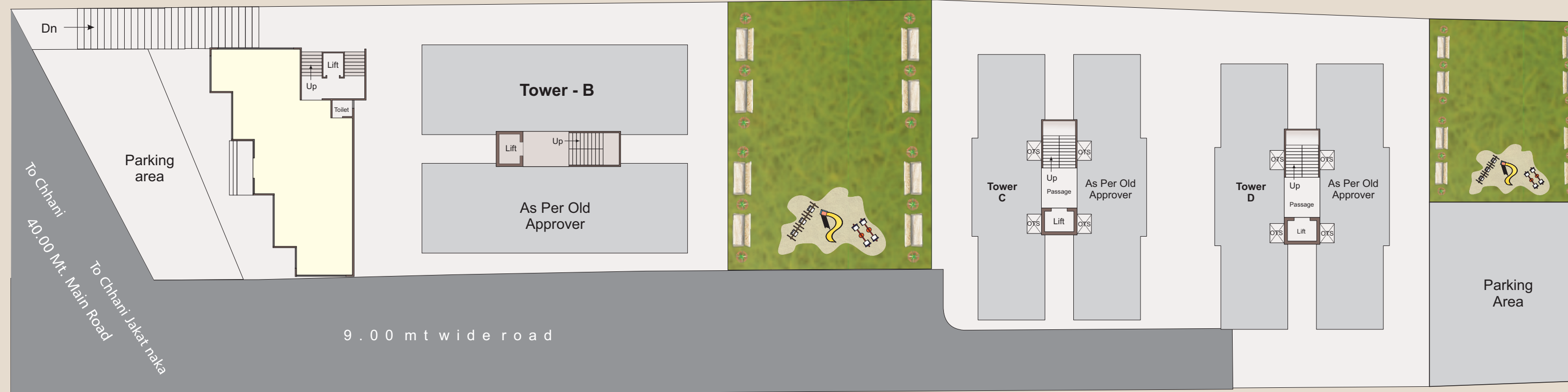
Harendra Bhatt

Print by: C.R. 98243 85808

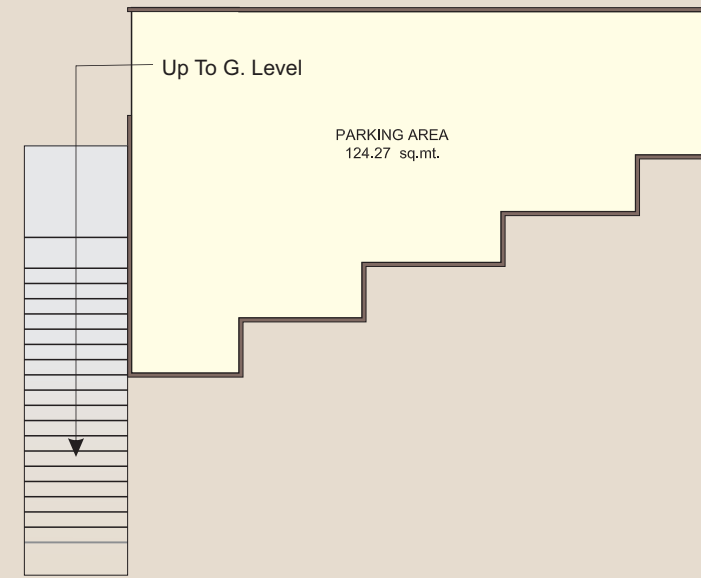
THE ESHANTI SIRA IS AN  
UPBEAT LIVING OF PEOPLE,  
**WHO**  
LEAVE BEHIND THEIR  
FOOTPRINTS  
ON TIME.

**ESHANTI SIRA**  
LUXURIOUS LIVING SPACE  
2 & 3-BHK LUXURIOUS FLATS

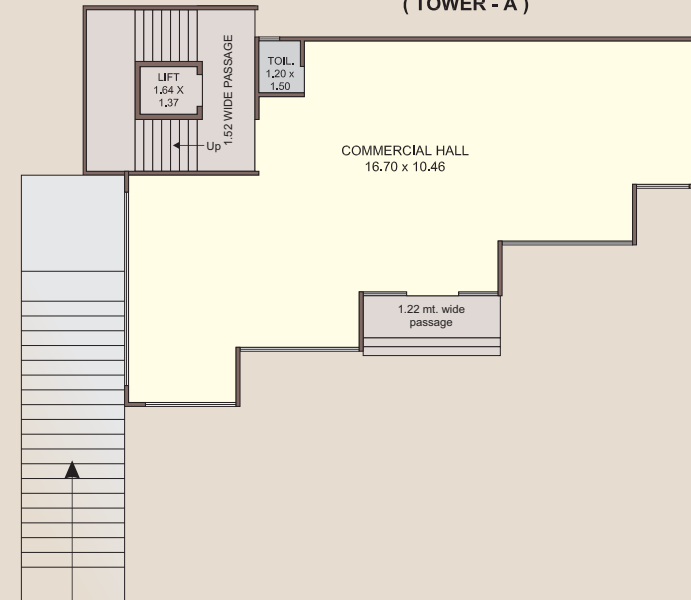
# TOWER LAYOUT



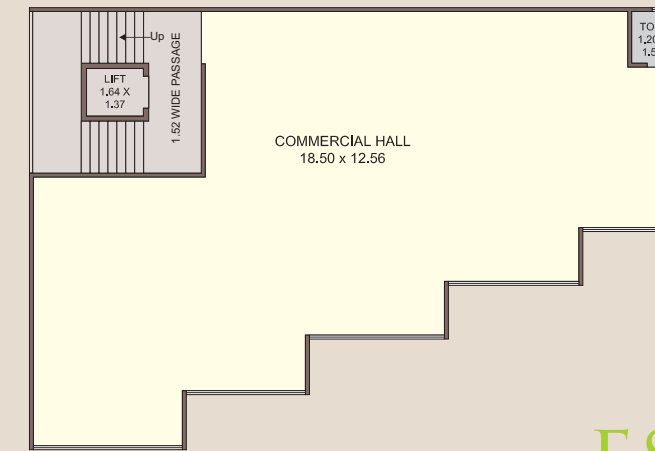
**BASEMENT FLOOR PLAN (TOWER - A)**

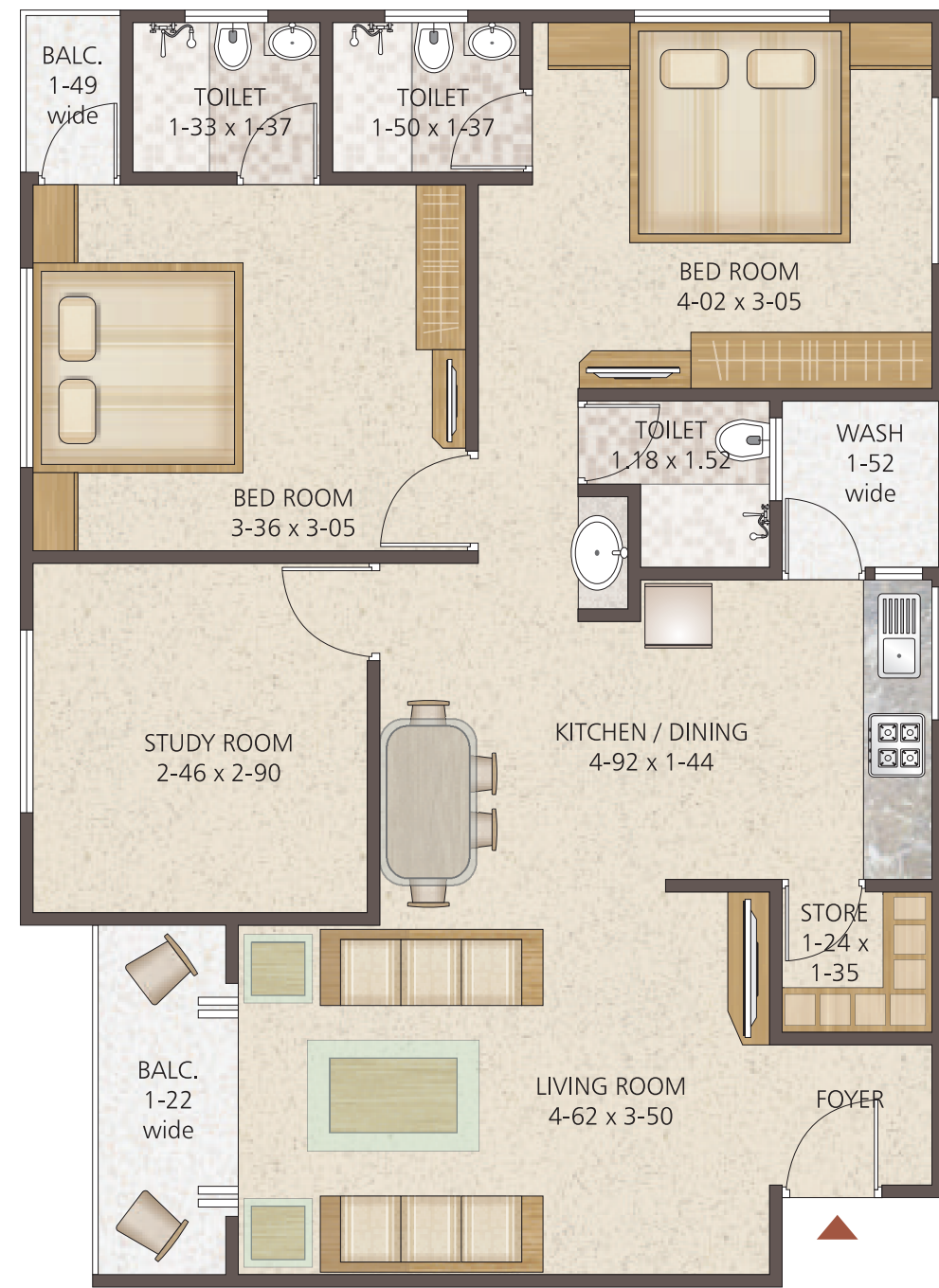


**GROUND FLOOR PLAN (TOWER - A)**

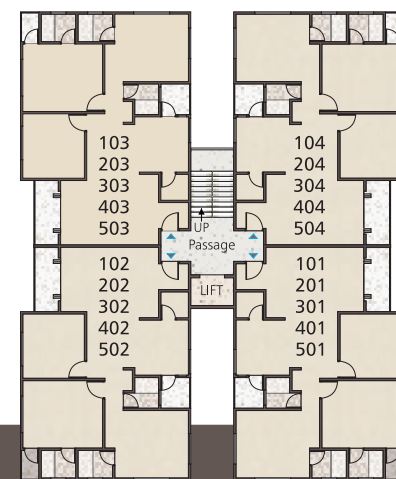
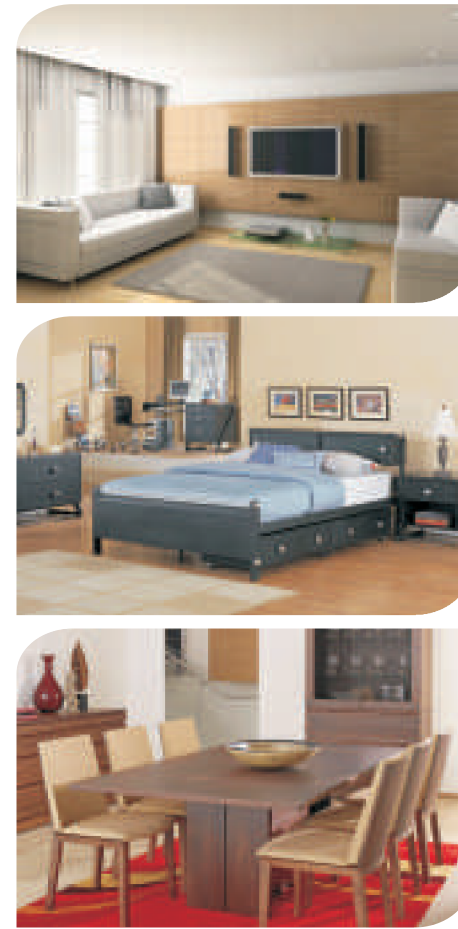


**1ST TO 4TH FLOOR PLAN (TOWER - A)**

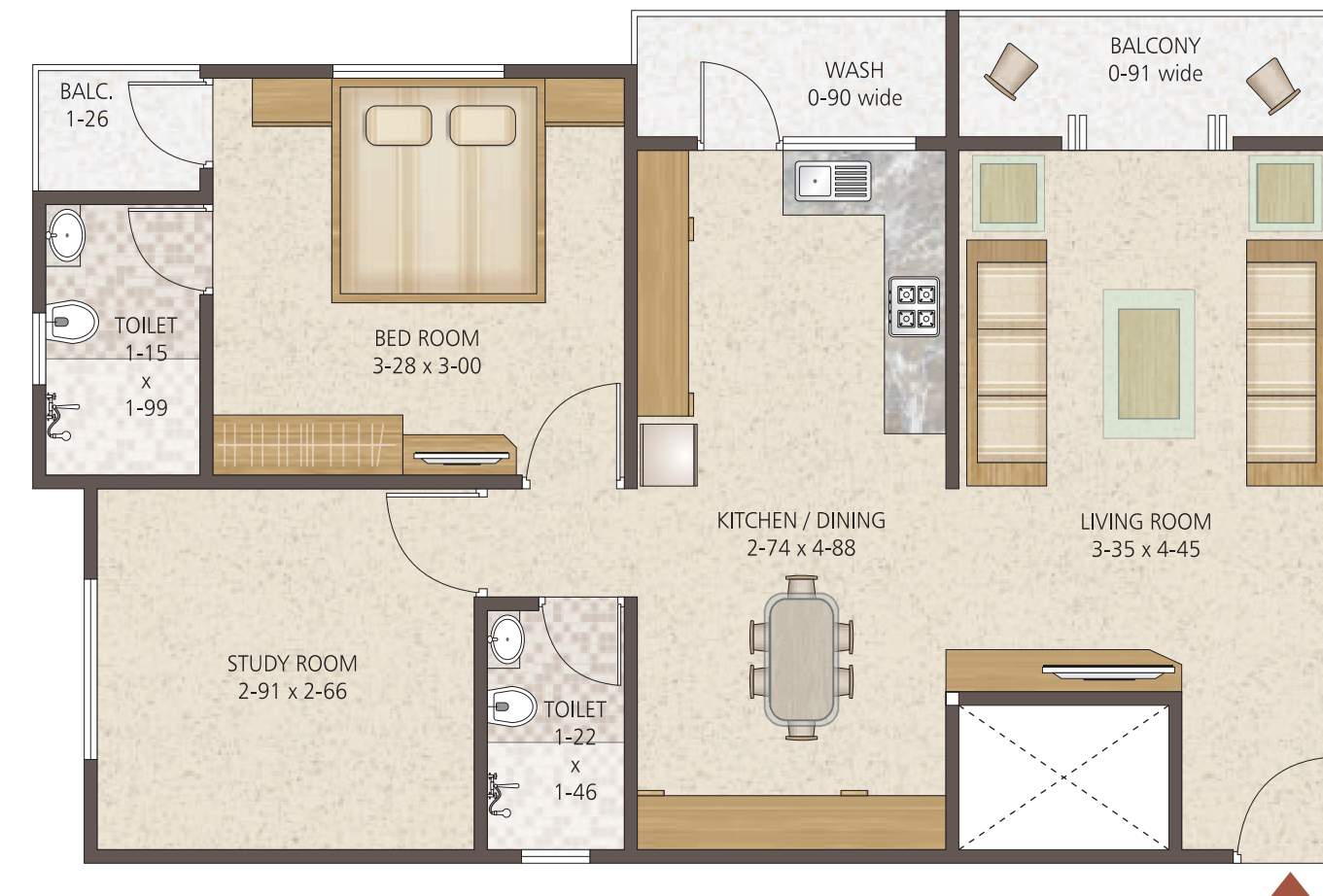




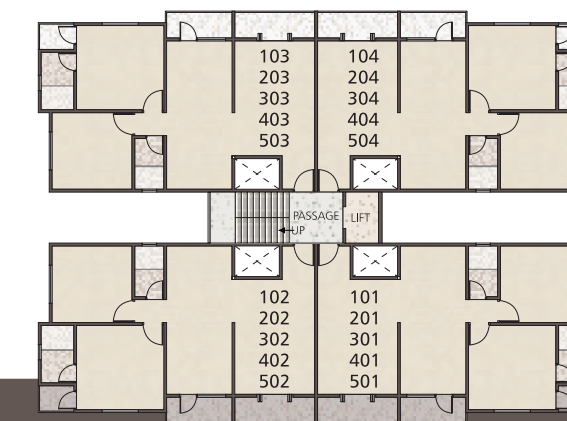
TOWER - B  
(3-BHK)



TYPICAL FLOOR PLAN  
(1 to 5th)



TOWER - C-D  
(2-BHK)



TYPICAL FLOOR PLAN  
(1 to 5th)



### Specification...

- Vitrified tiles Flooring in Rooms
- Decorative entrance doors & internal doors with bothside laminates and lock
- Systematic wall concealed C-PVC plumbing of good quality & tiles dedo upto slab level
- Provision for electric geyser in bathroom
- Abundant electric points with modular switches
- Colour anodized aluminium windows with natural stone sill
- Black granite platform with C.P. fitting & S.S. sink at kitchen
- Elegant paved car Parking
- Intercom security system
- Internal wall finished with distemper & External wall finished with acrylic paints
- Standard quality 5 passengers Lift

### Valuable Amenities

- Multi Purpose Hall
- 24 Hrs. Security
- Lush Green Garden
- Children Play Area
- Club House
- Gymnasium
- Game Room

### Features

- Underground & Overhead water tank with sensor
- Designer P.O.P. cealing in living room
- RO Water Purify system
- 24 Hours water supply
- Standard quality passenger elevator
- Attractive name plate & letter box to maintain the uniformity of the project
- Anti termite treatment to the building
- Power back up for common utility