


DEVELOPERS :
SAMARA HOMES LLP



 ANANTA SAMARA - Behind Collabera, Gotri Main Road, Gotri, Vadodara.

 8140 78 1112

 samarahomesllp@gmail.com

 www.anantabuilders.com



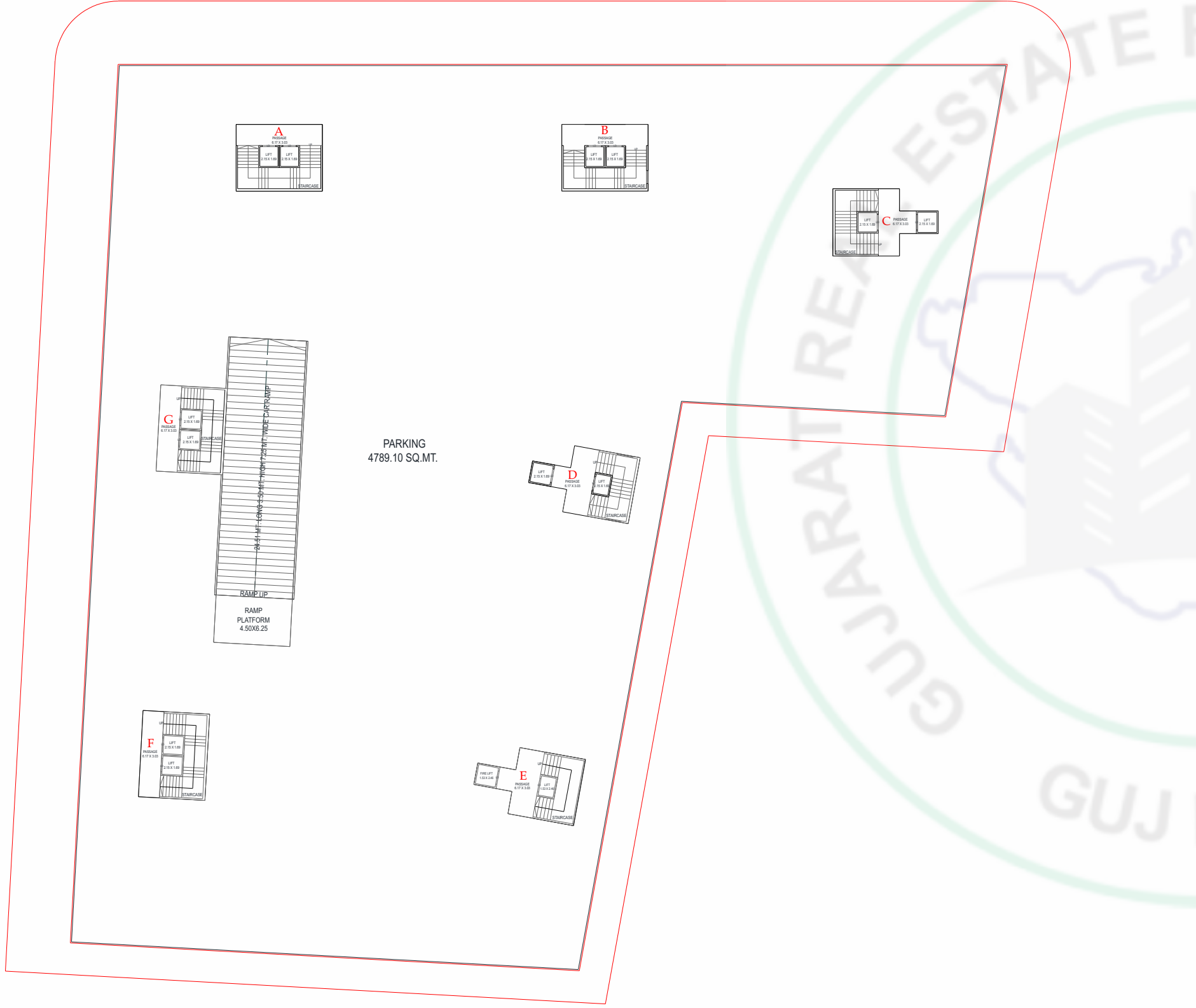
ANANTA Samara

SHOPS & 3 BHK LUXURY APARTMENTS

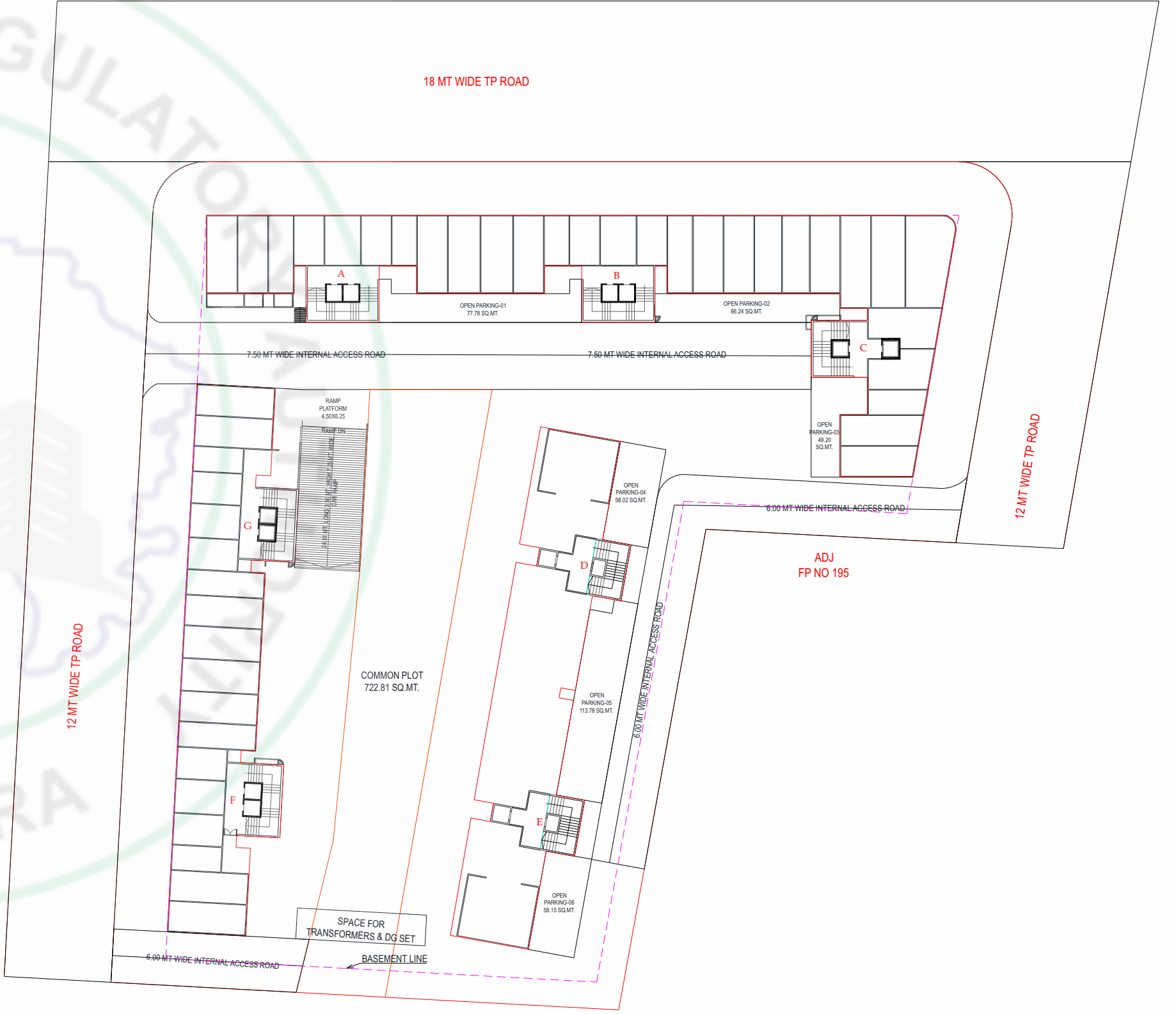
Design by  Samara | 98 95825 4417



BASEMENT FLOOR PLAN

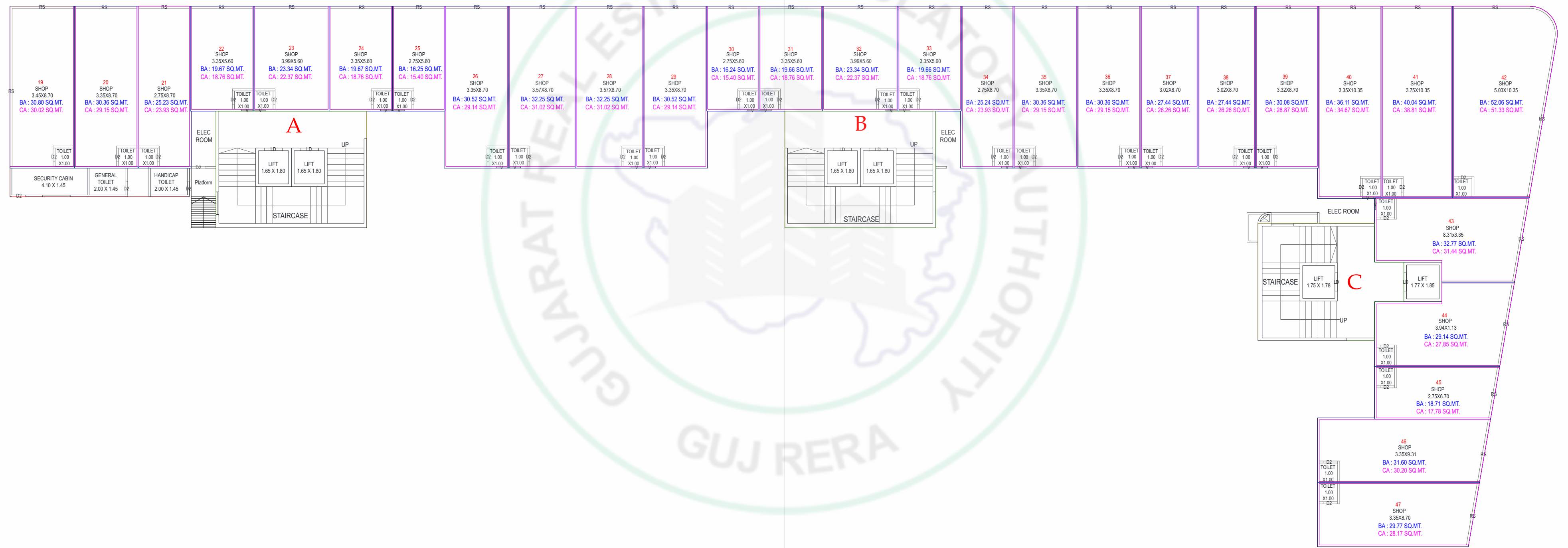


GROUND FLOOR LAYOUT



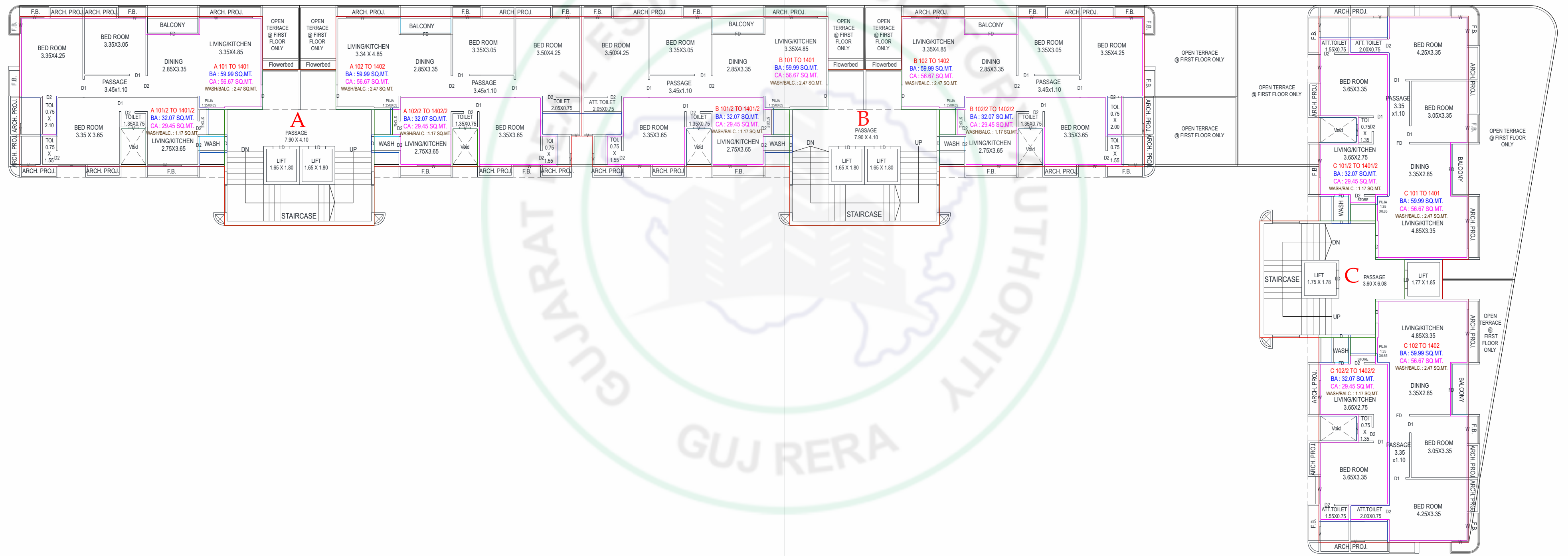
TOWER A-B-C

GROUND FLOOR PLAN



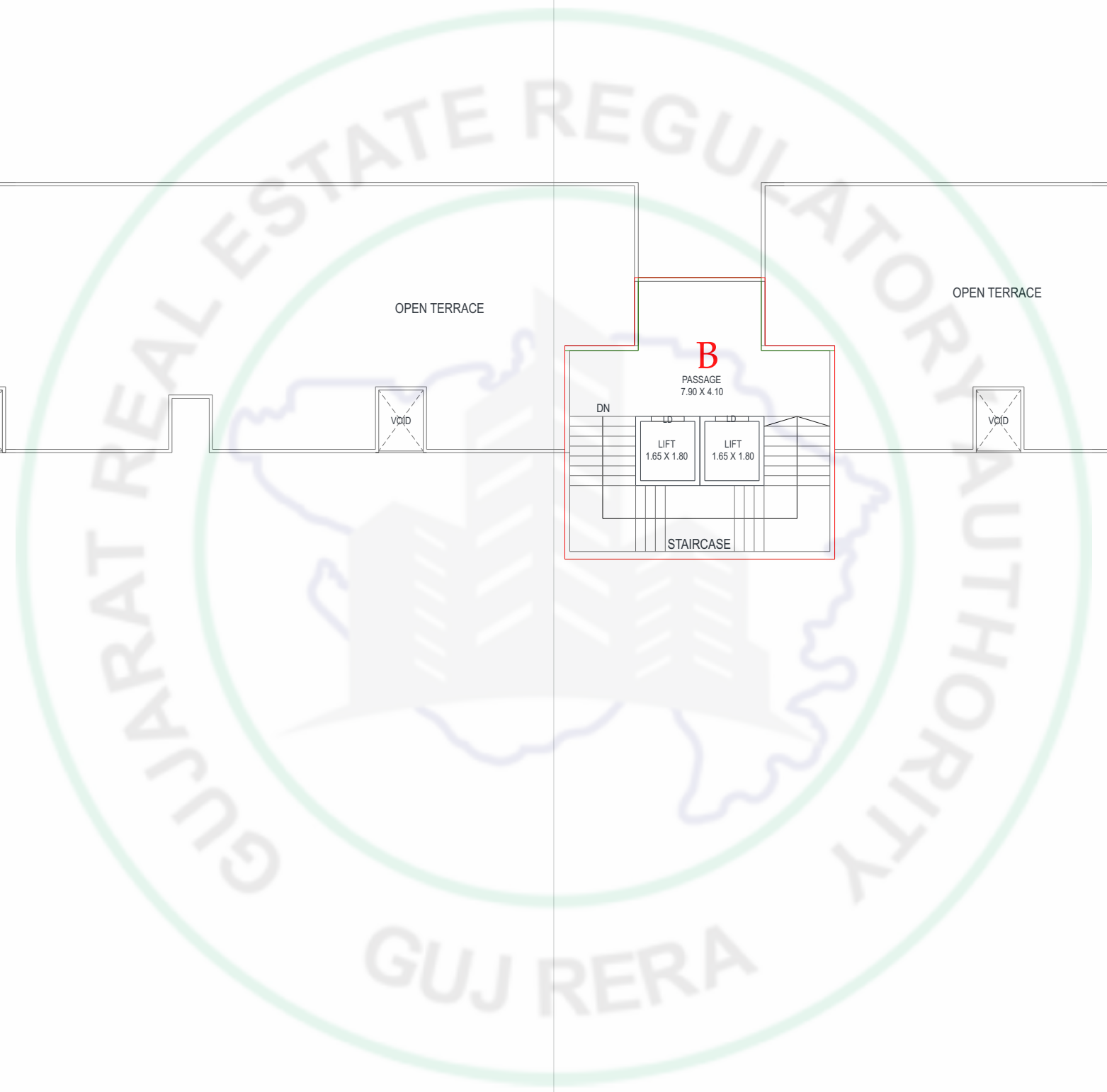
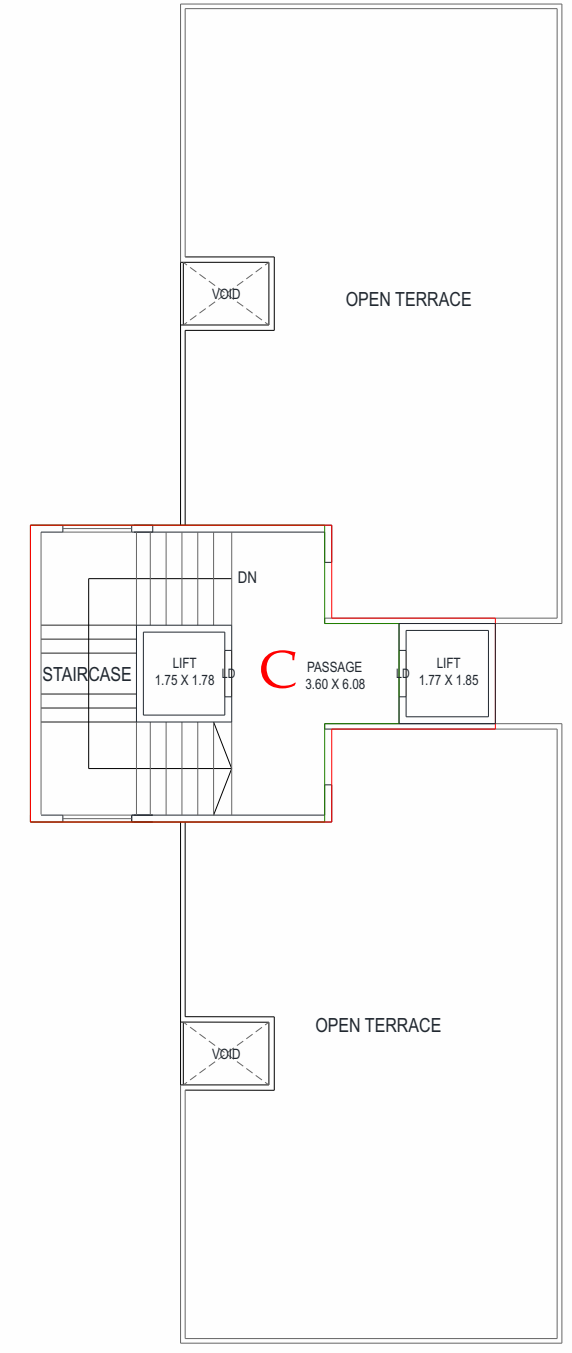
TOWER A-B-C

1st to 14th FLOOR



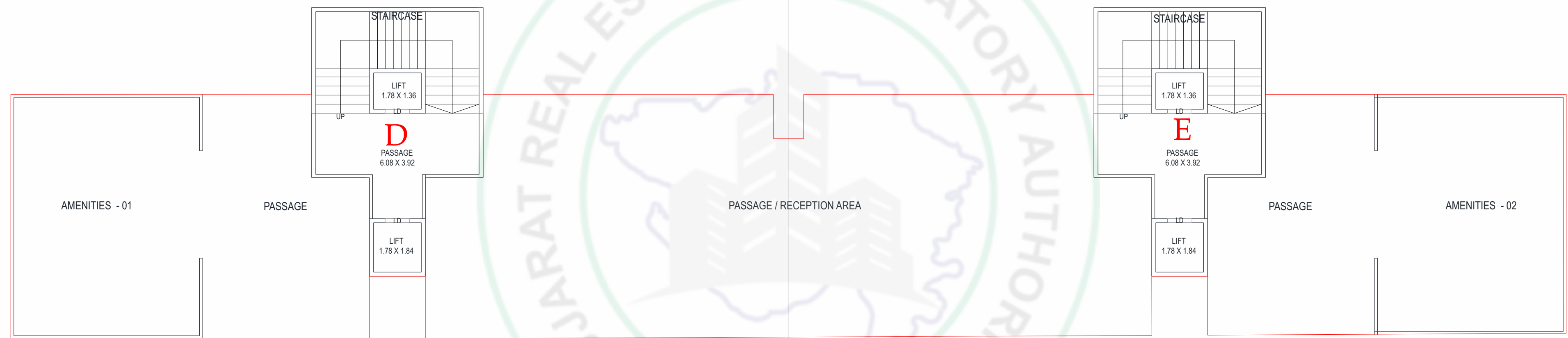
TOWER A-B-C

TERRACE FLOOR PLAN



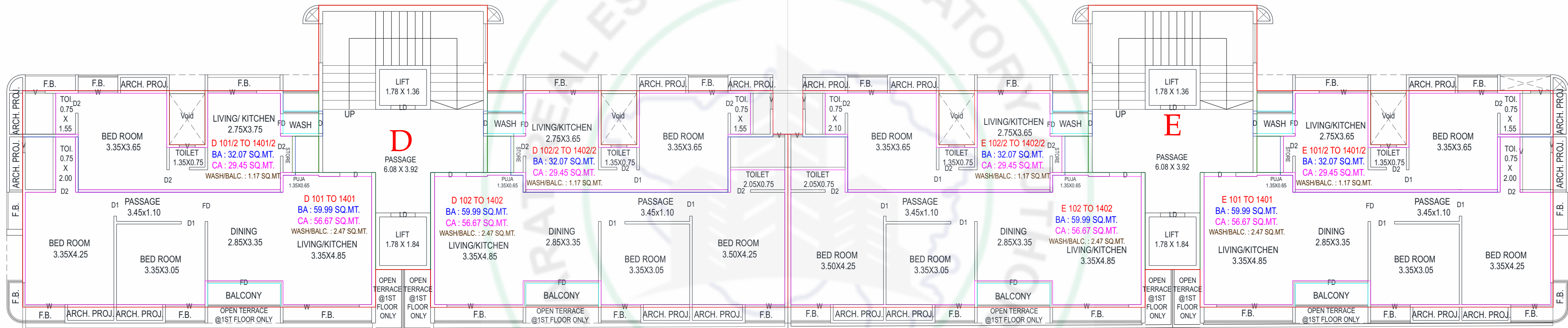
TOWER D-E

GROUND FLOOR PLAN



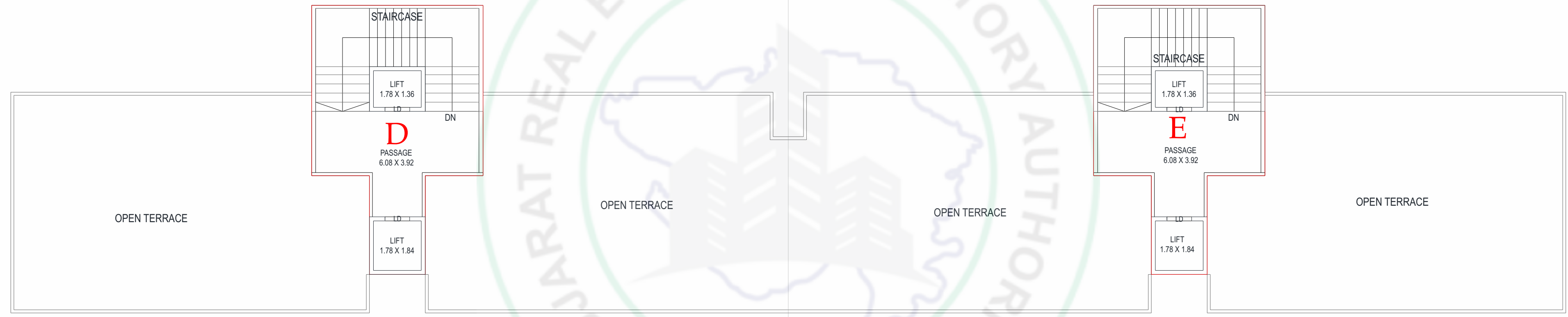
TOWER D-E

1st to 14th FLOOR

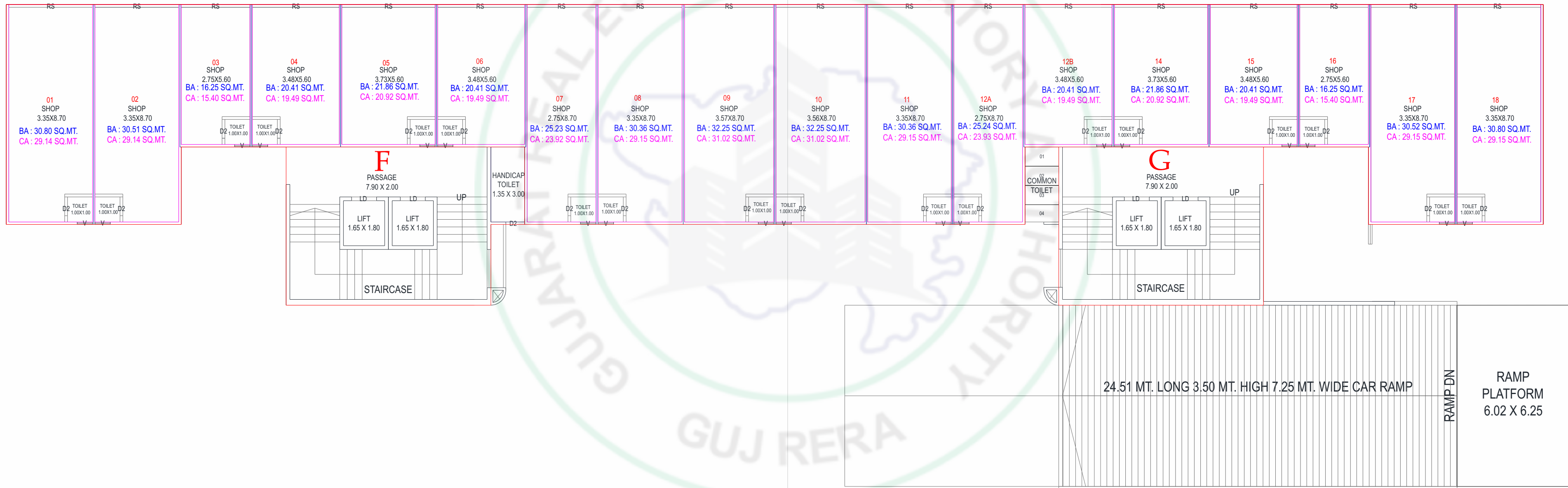


TOWER D-E

TERRACE FLOOR PLAN

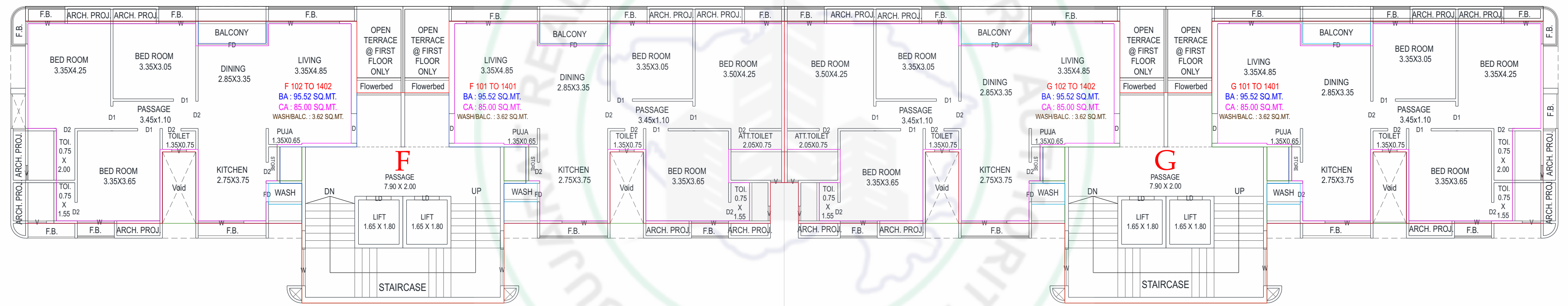


TOWER F-G GROUND FLOOR PLAN



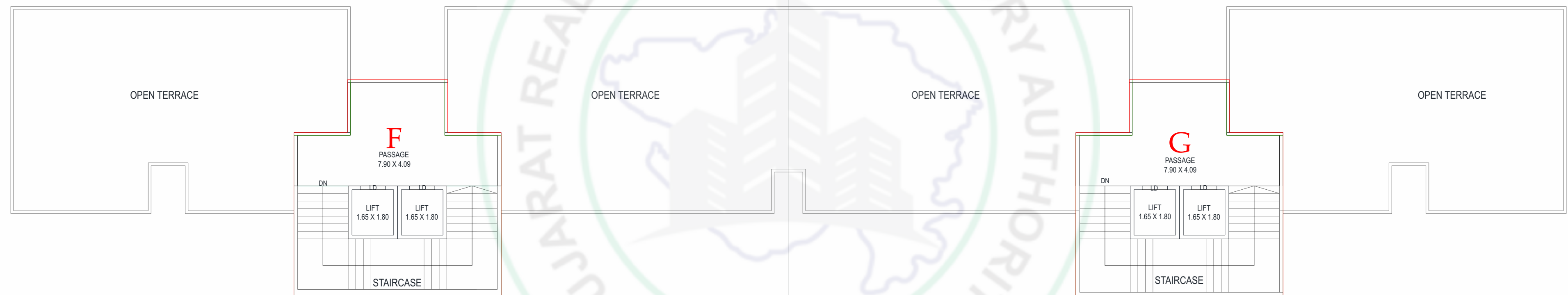
TOWER F-G

1st to 14th FLOOR



TOWER F-G

TERRACE FLOOR PLAN



SPECIFICATIONS

STRUCTURE

- Earthquake resistant RCC frame structure designed as approved by structure consultant.

FLOORING

- 1600mm X 800mm premium quality glazed vitrified tiles in living room, kitchen, dining, passage and bedrooms.
- Anti-skid tiles flooring in wash and balcony.

WALL FINISH

- Interior: Smooth finish plaster with 2 coat putty and primer
- Exterior: Double coat plaster with Roller/ Rustic texture and ultima paint.

TERRACE

- Elegant china mosaic finish with water proofing treatment.

DOORS

- **Main Door** : • Wooden frame with a high-quality decorative door with a veneer finish and polish on both sides. • Equipped with a digital door lock with Wi-Fi Access.
- **Internal Door** : Laminated flush door with granite/composite full body tile frame and lock fittings.

ELECTRIFICATION

- 3 Phase concealed copper wiring as per ISI standard of Anchor / Finolax/ RR Kabel/ Apar or equivalent.
- Modular switches (Schneider electric or equivalent)
- Adequate electric points in each room.
- TV point in living room and in master bedroom.

AIR-CONDITIONING

- PVC pipe fitted in wall for provision of drain pipe up-to drainage point.
- AC point in living room/ dining and in all bedrooms.

KITCHEN

- Premium quality granite/ Composite full body tile platform with S.S./ Quartz sink.
- Wall tiles up to lintel level. (8 FT)
- Sink tap with hot and cold water supply.

PLUMBING

- External: Standard quality CPVC/ UPVC plumbing.
- Internal: CPVC Concealed plumbing with ISI standard

BATHROOMS

- Premium quality bath fittings and sanitary wares.
- Geyser points in each bathroom.
- Premium quality ceramic tiles on wall up to lintel level and anti-skid ceramic tiles flooring.
- Granite/ Composite full body tile counter with ceramic basin and UPVC ventilation.
- Wash basin tap with hot & cold water supply.

WINDOWS

- Premium quality UPVC windows.
- Granite/ Composite full body tile frame for windows.

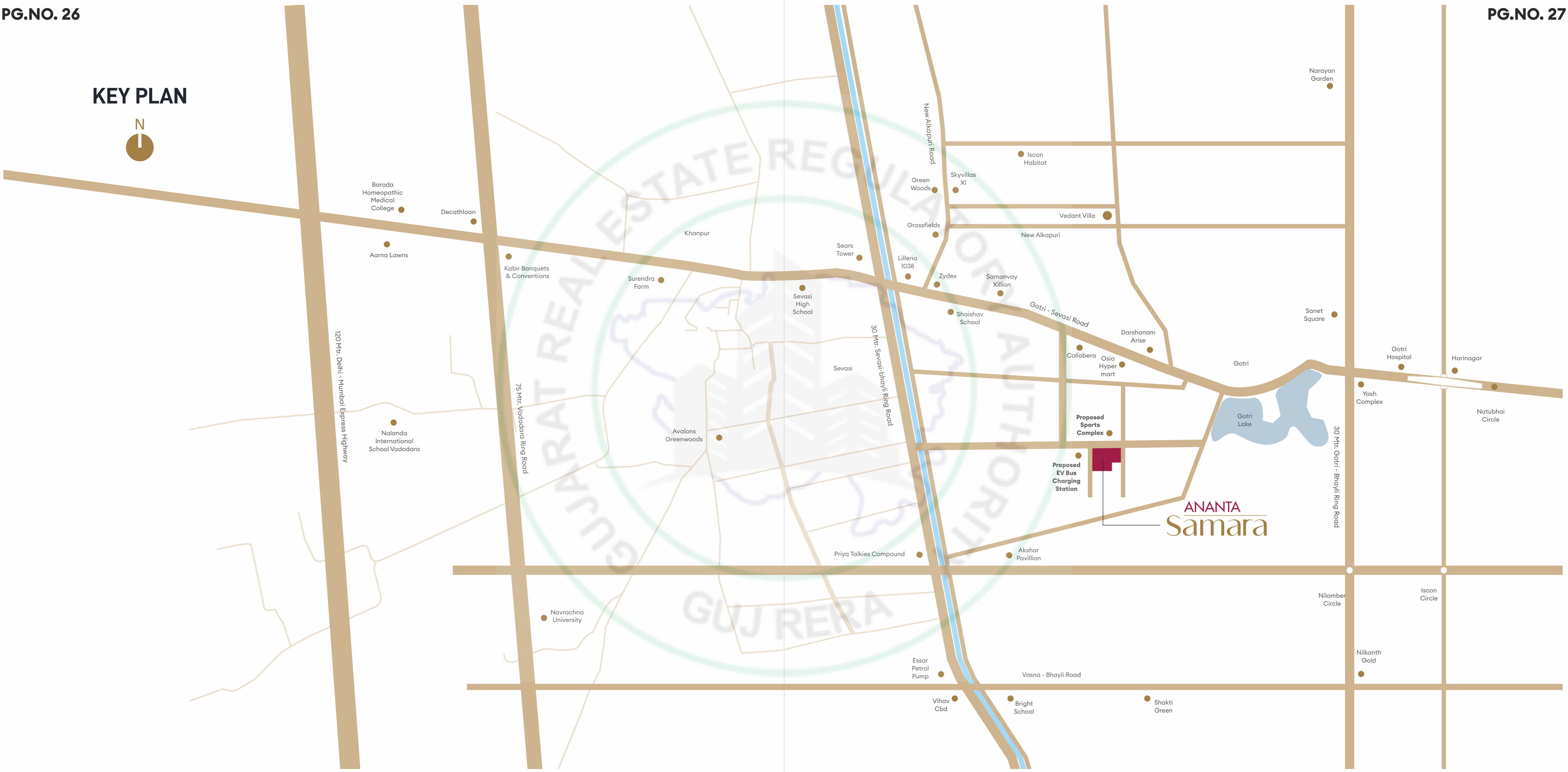
VALUE ADDITIONS

-
- Power Backup System for Lift & Common Amenities
-
- Fire Fighting system
-
- Dedicated area for service, utility and transformers.
-
- CCTV system with Surveillance Cameras at Strategic Locations in Common Area

AMENITIES

- Common Plot

KEY PLAN



ANANTA
Samara