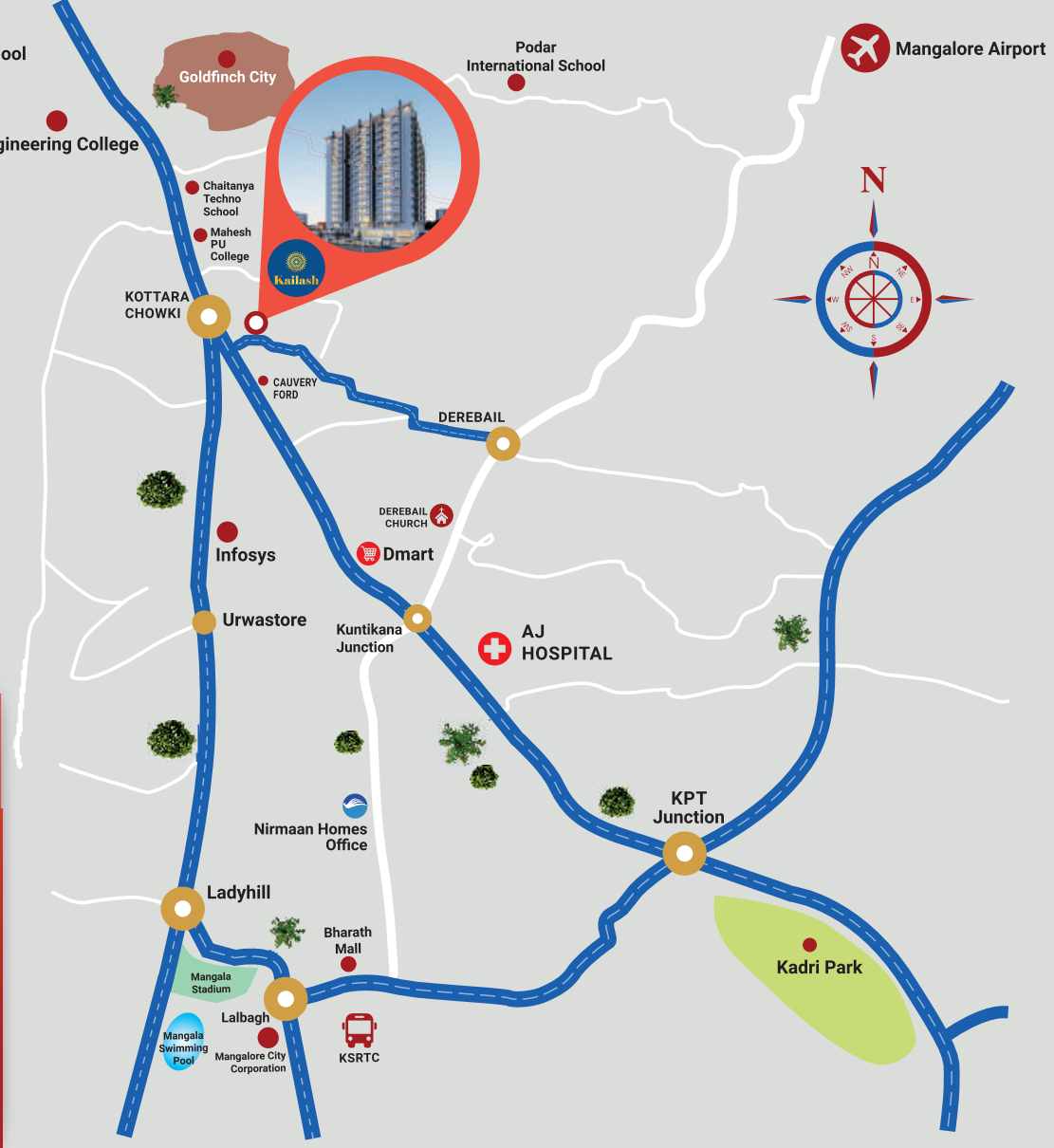


LOCATION MAP



CLOSE PROXIMITY

AJ Hospital and Medical College	1.2Km
Derebail Church	1.1Km
Dmart	900mtr
Bharath Mall	2.9Km
Mangalore City Corporation	3.2Km
Chaitanya Techno School	900mtr
Mahaganapathi Temple	1.5Km
Infosys	800mtr
Mahesh PU College	800mtr



ONGOING PROJECTS



AJANTA BUSINESS CENTER
Bejai-Kapikad, Mangalore



MATHURA
Derebail, Mangalore

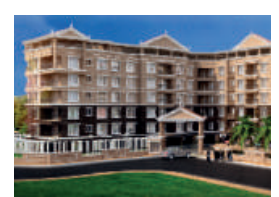


GOKULDHAM
Mannagudda, Mangalore

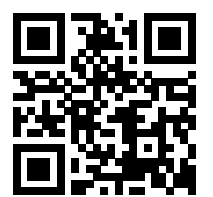
COMPLETED PROJECTS



NANDA GOKUL
Bejai, Mangalore



NANDA DEEP
Urwa, Mangalore



Scan for website



Suprabath Building, 1st Floor
Bejai-Kapikad Road, Mangalore - 3
www.nirmaanhomes.com

Follow us on: [f](#) [@](#) /nirmaanhomes
email: sales.nirmaanhomes@gmail.com

For Booking Contact:
96117 30555
70909 33900

This brochure is purely conceptual and is not a legal offering. Images are for indicative purpose only. The promoters / architects reserve the right to add / delete / alter any details / specification / elevation mentioned here in.

Kailash
2,3 & 4 BHK Apartments

**High Living
Luxury Homes**

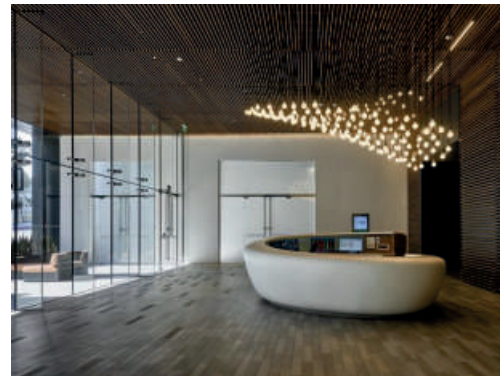
Kottara Junction, Mangalore



Luxurious Amenities



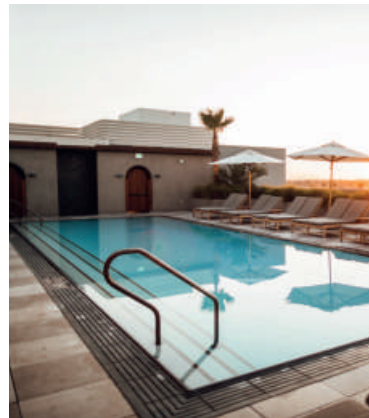
Mini Theatre 20 seater



Spacious Visitors Lobby



Library



Infinity Pool at Roof Top



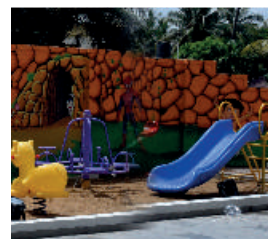
Yoga & Meditation Pavilion with Recreational Party Space



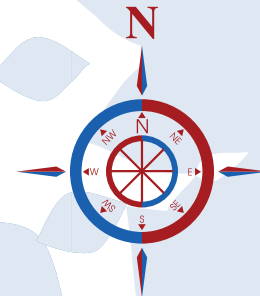
Fully Equipped Air-Conditioned Gymnasium



Indoor Games



Children Play Area

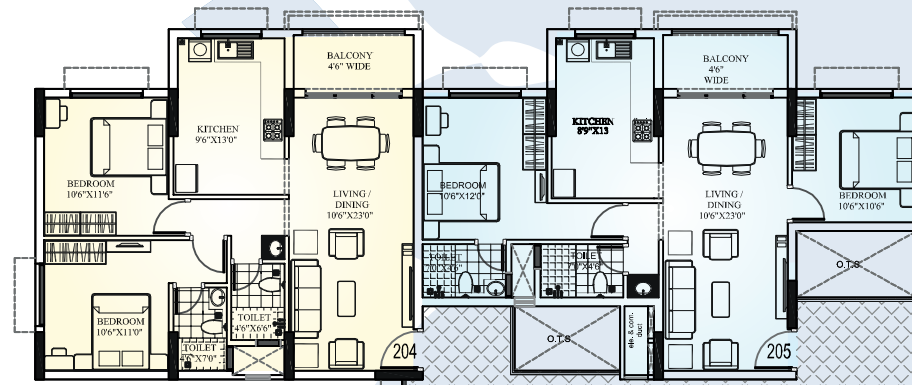


207 - 2BHK
 Saleable Area - 1105 sq. ft
 Carpet Area - 780.07 sq. ft.
 (Unit Carpet Area - 732.82 + Balcony Area - 47.25 sq. ft.)

206 - 3BHK
 Saleable Area - 1950 sq. ft
 Carpet Area - 1404.3 sq. ft.
 (Unit Carpet Area - 1241.26 + Balcony Area - 163.04 sq. ft.)

204 - 2BHK
 Saleable Area - 1115 sq. ft
 Carpet Area - 800.06 sq. ft.
 (Unit Carpet Area - 754.50 + Balcony Area - 45.56 sq. ft.)

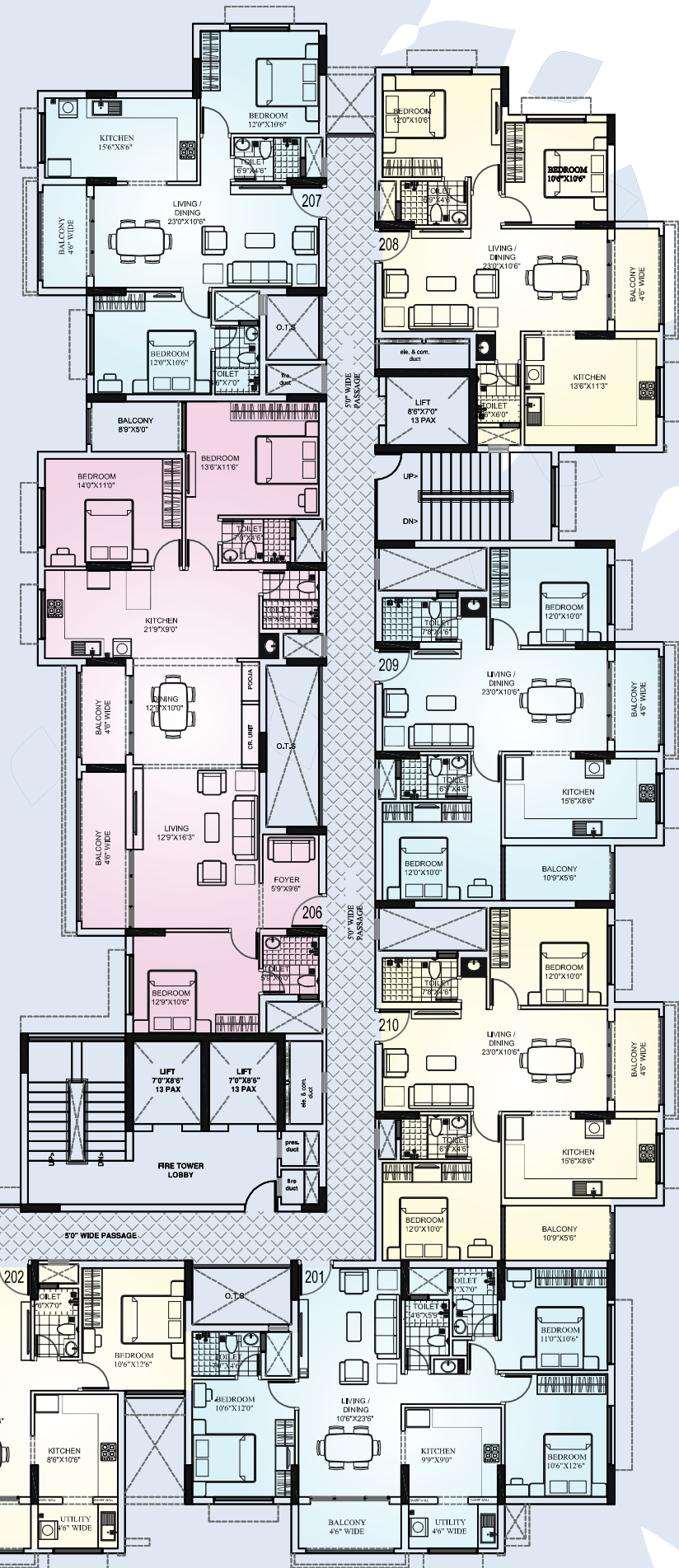
205 - 2BHK
 Saleable Area - 1105 sq. ft
 Carpet Area - 779.28 sq. ft.
 (Unit Carpet Area - 732.03 + Balcony Area - 47.25 sq. ft.)



203 - 3BHK
 Saleable Area - 1385 sq. ft
 Carpet Area - 982.44 sq. ft.
 (Unit Carpet Area - 900.32 + Balcony Area - 82.12 sq. ft.)

202 - 2BHK
 Saleable Area - 1115 sq. ft
 Carpet Area - 793.77 sq. ft.
 (Unit Carpet Area - 709.96 + Balcony Area - 83.81 sq. ft.)

201 - 3BHK
 Saleable Area - 1400 sq. ft
 Carpet Area - 990.41 sq. ft.
 (Unit Carpet Area - 902.29 + Balcony Area - 88.12 sq. ft.)



208 - 2BHK
 Saleable Area - 1115 sq. ft
 Carpet Area - 795.26 sq. ft.
 (Unit Carpet Area - 748.01 + Balcony Area - 47.25 sq. ft.)

209 - 2BHK
 Saleable Area - 1200 sq. ft
 Carpet Area - 852.76 sq. ft.
 (Unit Carpet Area - 745.35 + Balcony Area - 107.41 sq. ft.)

210 - 2BHK
 Saleable Area - 1200 sq. ft
 Carpet Area - 852.73 sq. ft.
 (Unit Carpet Area - 745.32 + Balcony Area - 107.41 sq. ft.)

Main Road

Other Amenities

- Security Surveillance System with CCTV & Intercom | Access Controlled Door
- 13 Passenger Automatic Elevators | Solar Electrical Panels
- Reticulated Gas Connection | Generator Backup | Well/ Borewell Water