

elite
MāRS[®]
FUTURISTIC 3BHK

Opp. Tirupati Akruvi Greens, Nr. Nirma University, B/h. Ambedkar University,
Malabar County Road, Chharodi, Ahmedabad - 382481

CORPORATE OFFICE :
1301, Elite Bussiness Hub, Opp. Sapath Hexa,
Near Kargil Cross Road, Ahmedabad - 380060

Developer
Maruti Corporation
(Elite Group)

Contact
+91 9913 755 753

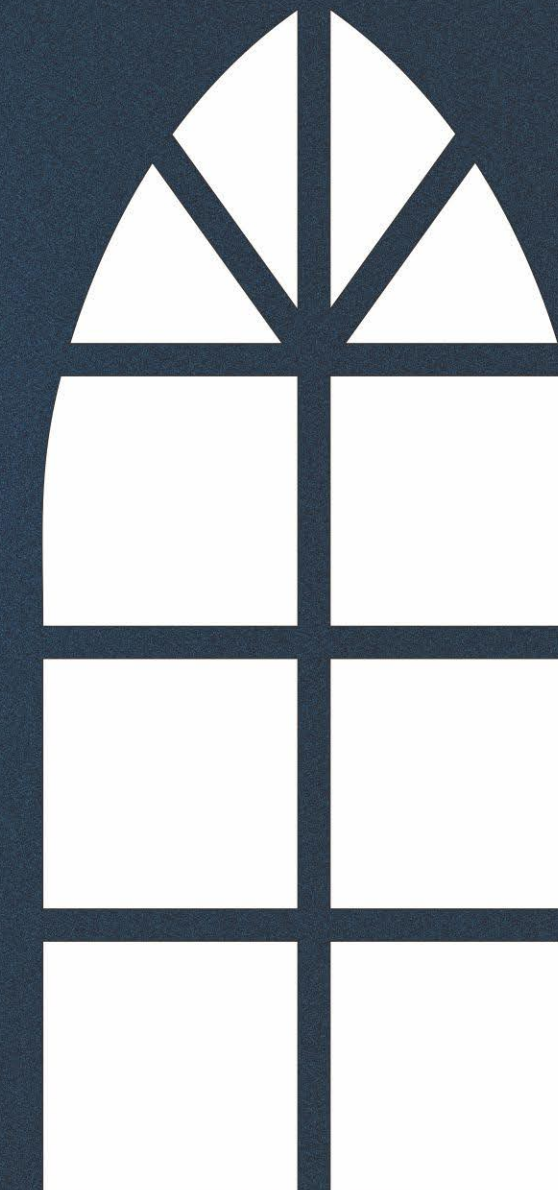
Architect
 ARTHAM

elitema.co.in

Designed for the advanced



elite
MāRS[®]
FUTURISTIC 3BHK



27.00"

9.00"

13.00"

A window that opens to
another planet



another planet



elite
MARS[®]
FUTURISTIC 3 BHK

Balconies that are designed to make you disconnect from the noise. Beautifully crafted, spacious, and with an exceptional view so that you enjoy each of your days freely.

27.00"

9.00"

13.00"

9.00"



Majestic build

Inspired from ultra-modern architecture, a mega structure that is appealing to the eye and substantial in form.

13.00"

9.00"



Euphoric gardens

Lush gardens, laced with splendid elements to immerse you in a heavenly experience.

13.00"

elite
MARS[®]
FUTURISTIC 3 BHK



outdoor amenities

- Box cricket pitch
- Children play area
- Garden
- Sitting area
- Bubble fountain

- Basket ball
- Badminton
- Volleyball court



9.00"

13.00"

9.00"



Hatching location

Situated in the fastest forthcoming areas of the city a half commercial-half residential building that suits all your needs.

13.00"

elite
MARS[®]
FUTURISTIC 3 BHK

Gym

Library

Indoor game

Society office

indoor amenities

Two storey allotted parking

Vastu friendly design



9.00"

13.00"

9.00"



13.00"

9.00"



Exceptionally landscaped
A well thought and planned out landscaping to give the contemporary monument a graceful add-on.

13.00"

GROUND FLOOR



9.00"

13.00"



FIRST FLOOR



9.00"

13.00"



elite
MARS[®]
FUTURISTIC 3BHK

18M WIDE ROAD

2 M WIDE PASSAGE

2 M WIDE PASSAGE

SECOND FLOOR



9.00"



18M WIDE ROAD

13.00"

TYPICAL FLOOR
(3rd to 12th floor)



18M WIDE ROAD

elite
MARS[®]
FUTURISTIC 3BHK

13.00"

9.00"



13.00"

9.00"

13.00"

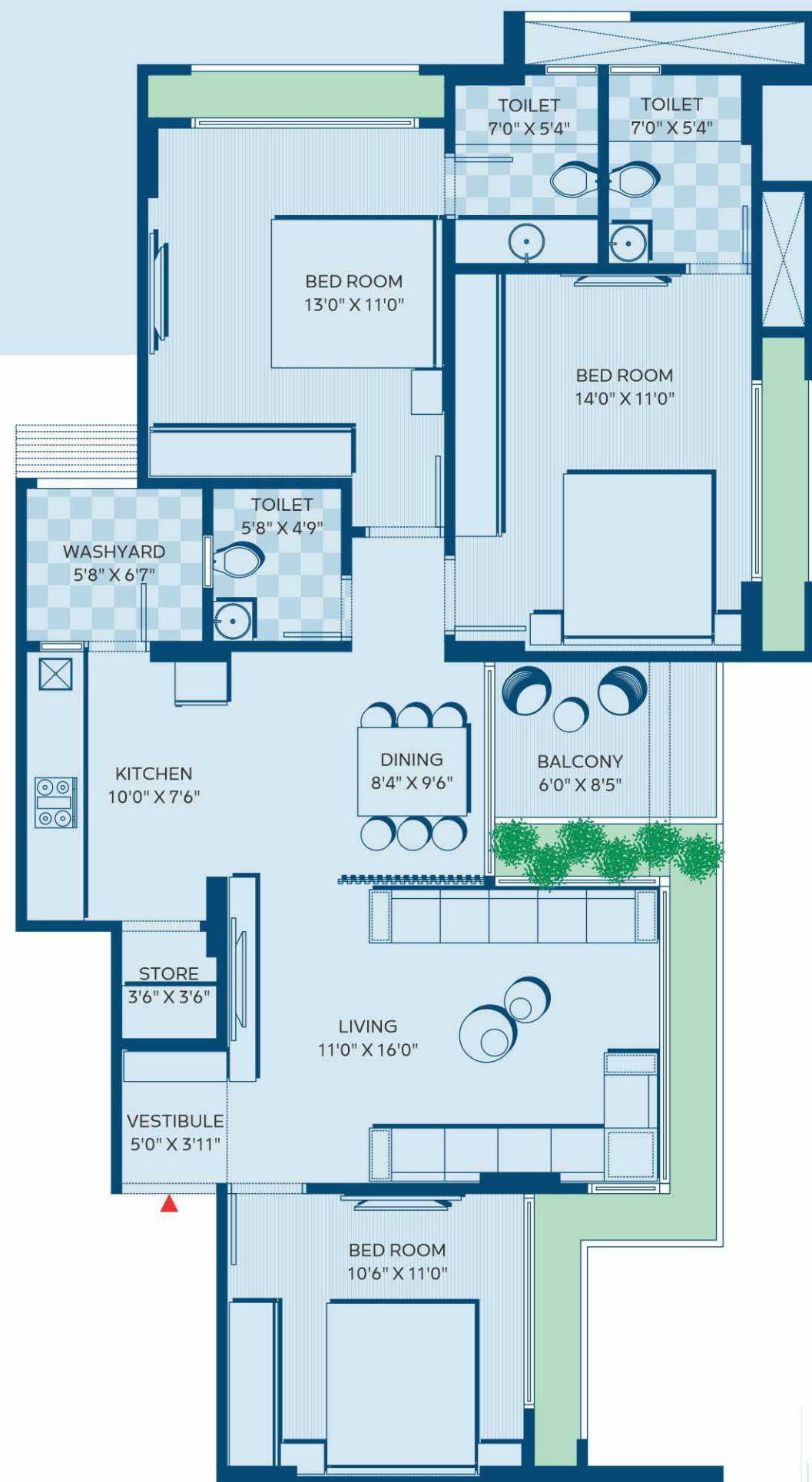
A

BLOCK-A (3BHK)



B

BLOCK-A (3BHK)

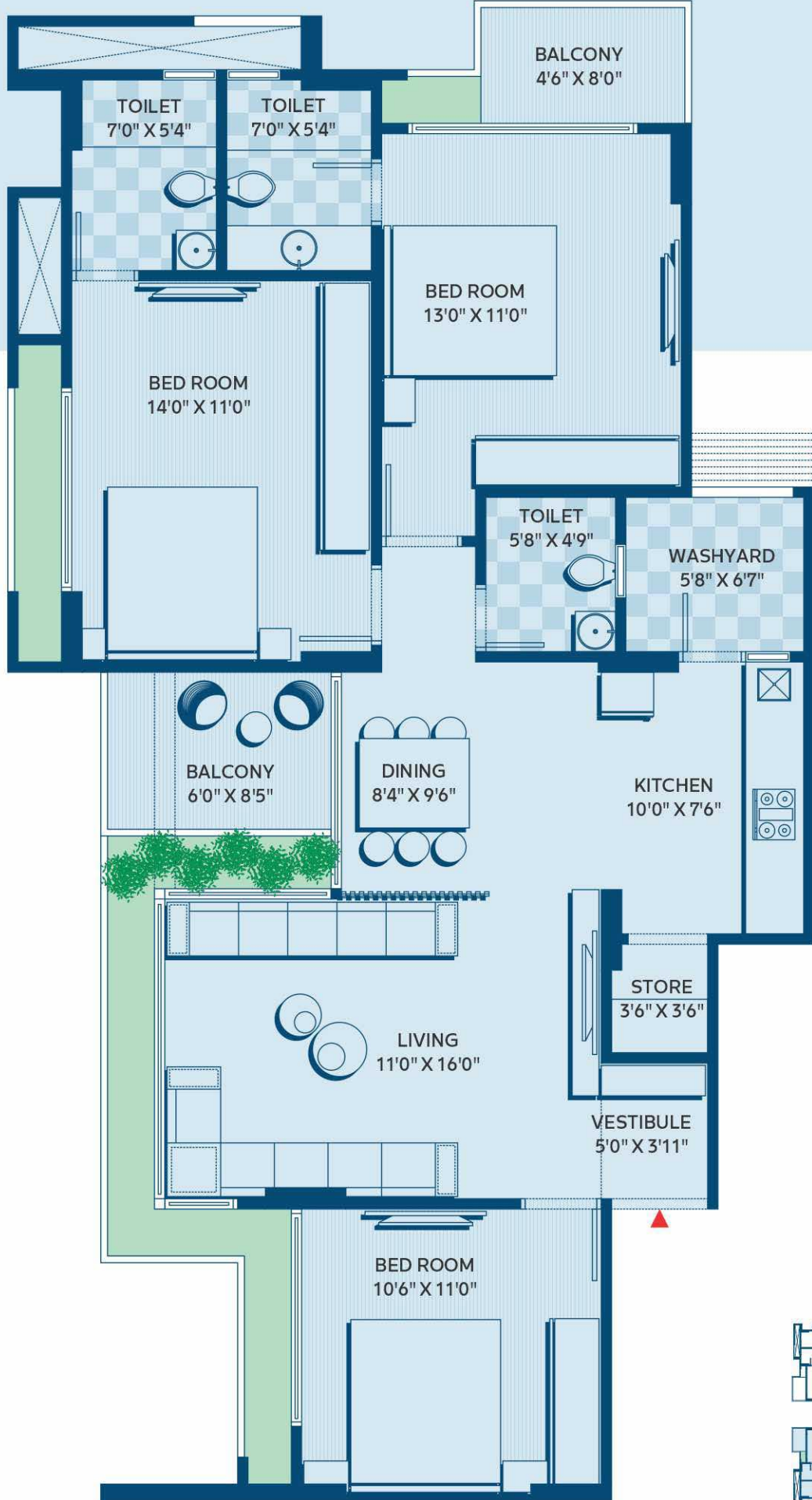


9.00"

13.00"

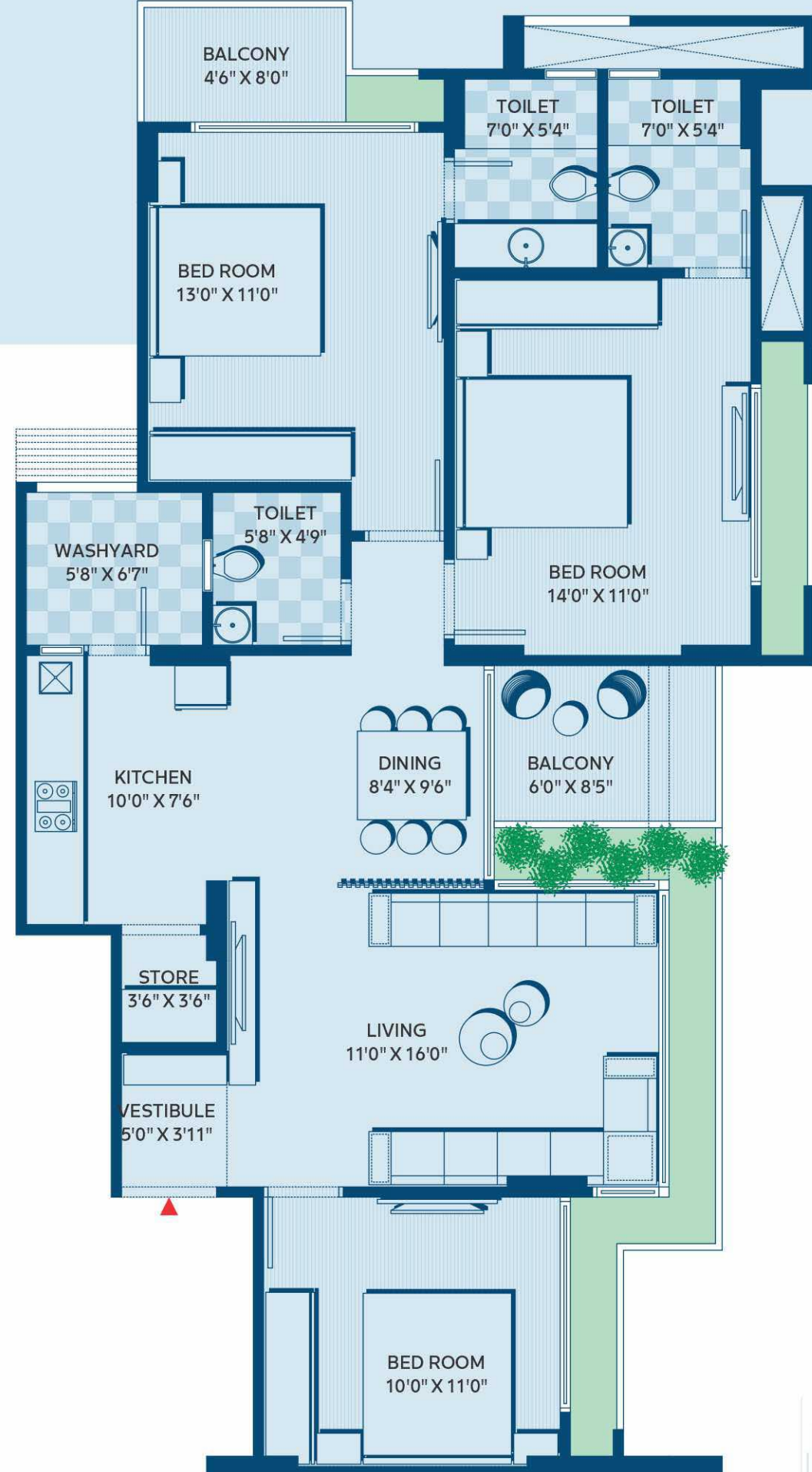
C

BLOCK-A (3BHK)



D

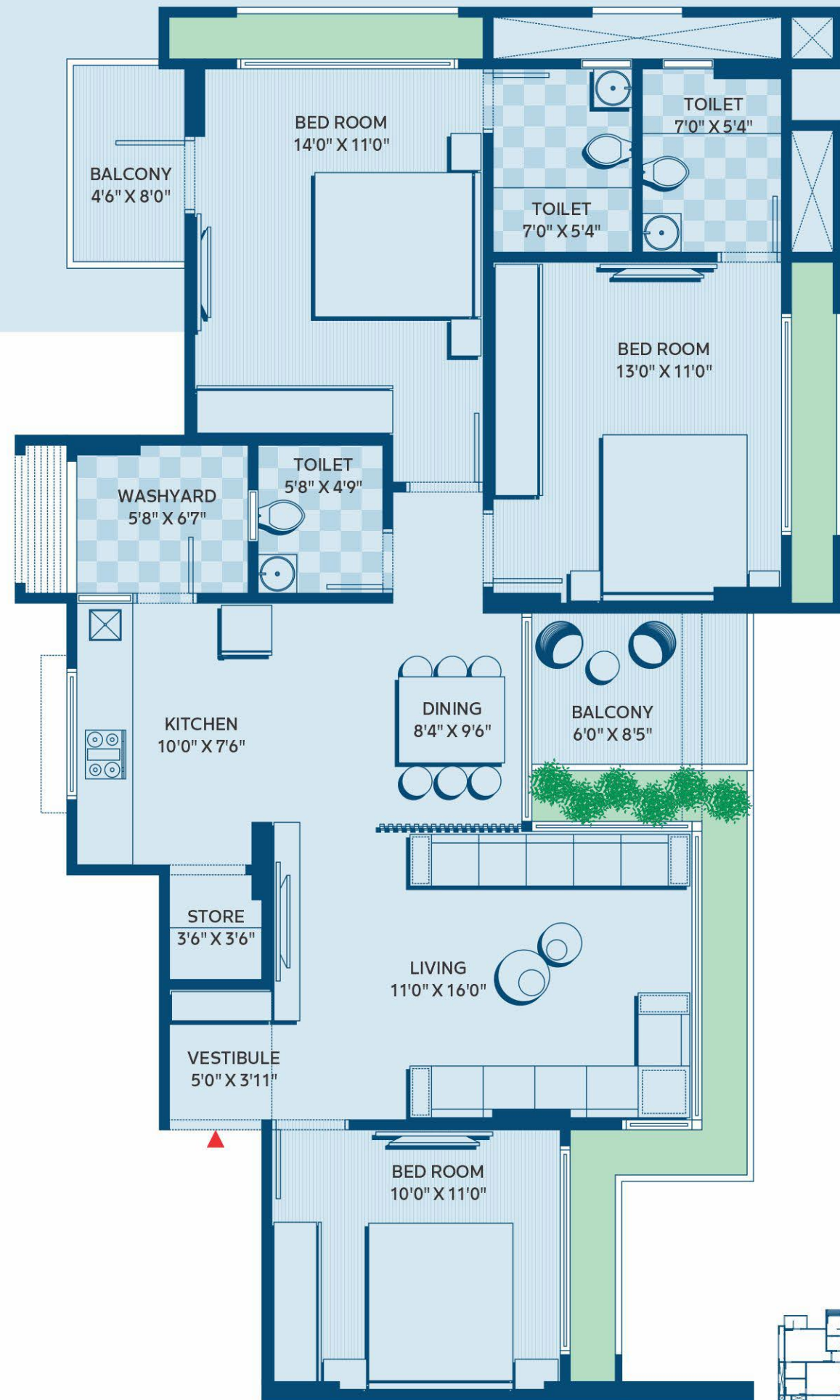
BLOCK-A (3BHK)



9.00"



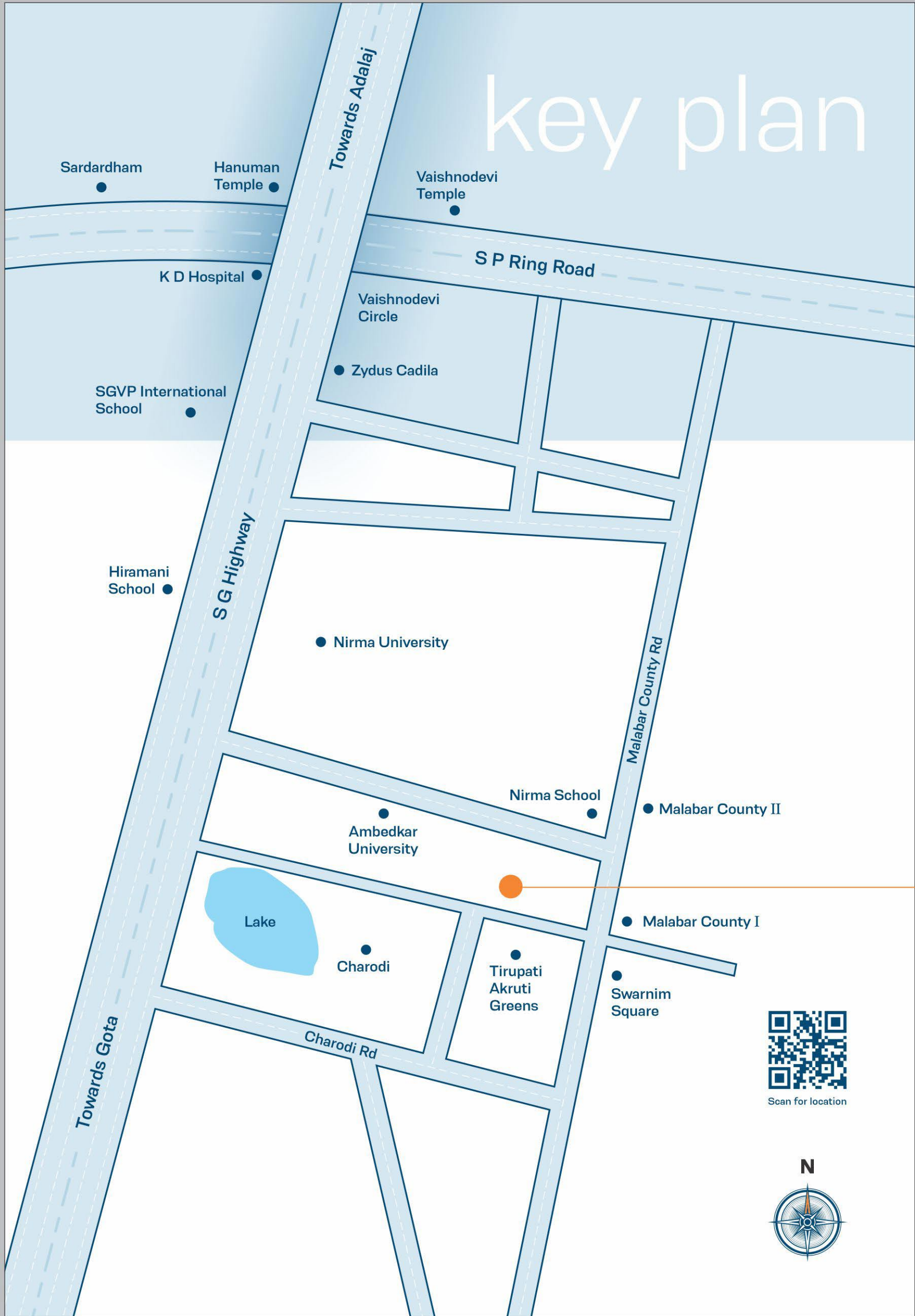
E
BLOCK-B
(3BHK)



Facilities

-  No car zone on ground floor
-  Society office
-  Exclusive entrance lobby
-  Fire safety system
-  Around the clock security
-  Electricity meter room
-  CCTV Cameras
-  24 hrs water supply
-  24 hrs lift power backup
-  Smart security system
-  Video calling door bell

13.00"



key plan

S.G. Highway	600 M
Nirma University	1.0 KM
SGVP International School	2.0 KM
KD Hospital	2.6 KM
Vaishnodevi	2.5 KM
Gujarat Highcourt	6.3 KM
Kargil Petrol Pump	6.8 KM
Airport	15.7 KM

Specifications

Flooring

- Double charge vitrified tiles

Kitchen

- Granite platform with SS Sink, designs tiles, full body tiles in wash area

Toilet/ Plumbing

- Vitrified tiles in flooring
- Glazed ceramic tiles upto lintel level
- Concealed plumbing with superior quality
- Brass fitting (Jaquar/Cera) equivalent

Door

- Flush Door

Windows

- Fully glazed anodized aluminum sliding

Paints

- Interior : Lime stone
- External : Texture with acrylic paint

Electrical

- Concealed ISI copper wiring with modular switches
- MCB distribution panel



Opp. Tirupati Akruiti Greens,
Nr. Nirma University,
B/h. Ambedkar University,
Malabar County Road,
Chharodi, Ahmedabad - 382481



RERA NO.: PR/GJ/AHMEDABAD/AHMEDABAD CITY/AUDA/MAA09662/010122 | www.gujrera.gujarat.gov.in

13.00"