



KESAR  
**TreeTown**

1, 2 & 3 BHK Lifestyle homes

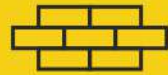
The Capital of Greenery

Be at the Centre of Everything  
**NEAR TO  
PRIME LOCATIONS**

CHOOSE WISELY. CHOOSE KESAR TREE TOWN



Moshi's Best Township



Quality Construction



1500+Residents



800+ Units



9 Towers



Landscaped Gardens



Swimming Pools



Clubhouse



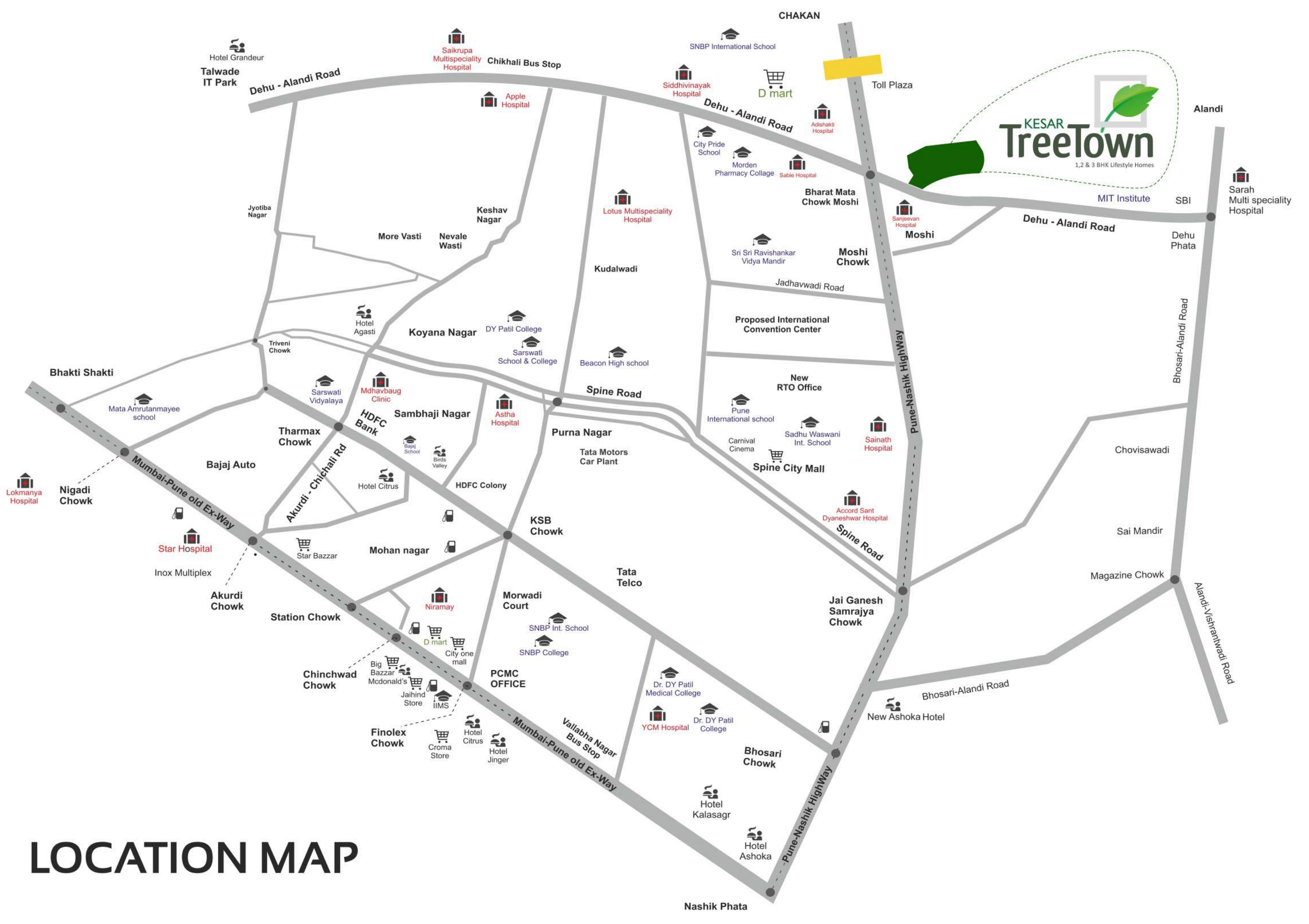
Cricket Ground



School -SNBP



RERA REGISTRATION NUMBER  
**P52100021258**



# LOCATION MAP

## NEAR BY PLACES



### Schools & Colleges within 3km

- SNBP International School
- Poona Internationals School
- Sadhu Vaswani International School
- City Pride School
- Sri Sri Ravishankar Vidya Mandir



### Shopping Malls 9km

- Central Mall
- Pantaloon Mall
- Big Bazaar
- D'mart -2 Km.
- Croma



### Bank Services within 2 km

- Axis Bank
- HDFC Bank
- Cosmos Bank
- ICICI Bank



### Hospitals within 2 km

- Sainath Hospital
- Sable Hospital
- Sanjeevan Hospital
- Accord Hospital







  
**KESAR**  
**TreeTown**  
1,2 & 3 BHK Lifestyle Homes



**CLUB HOUSE**



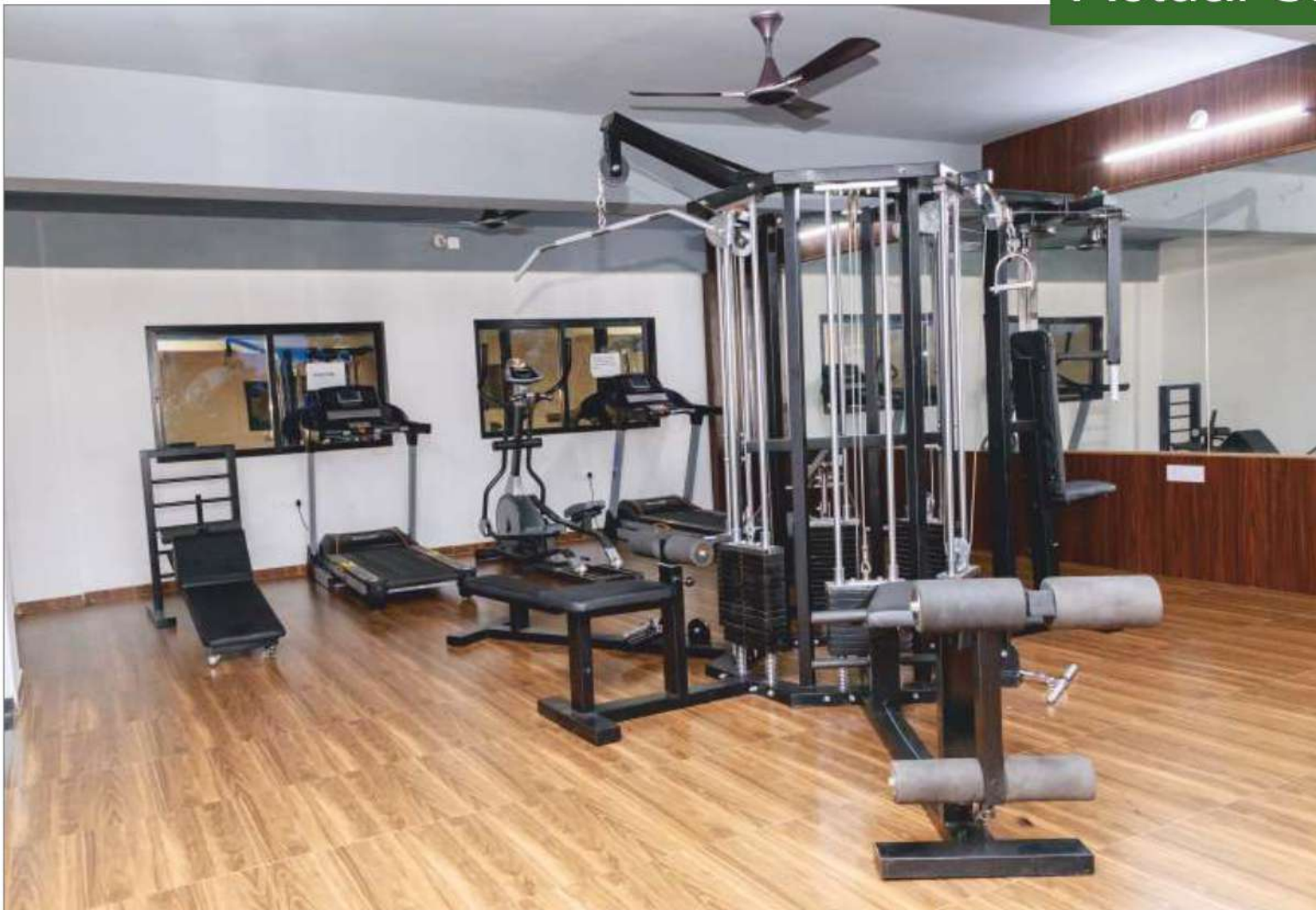


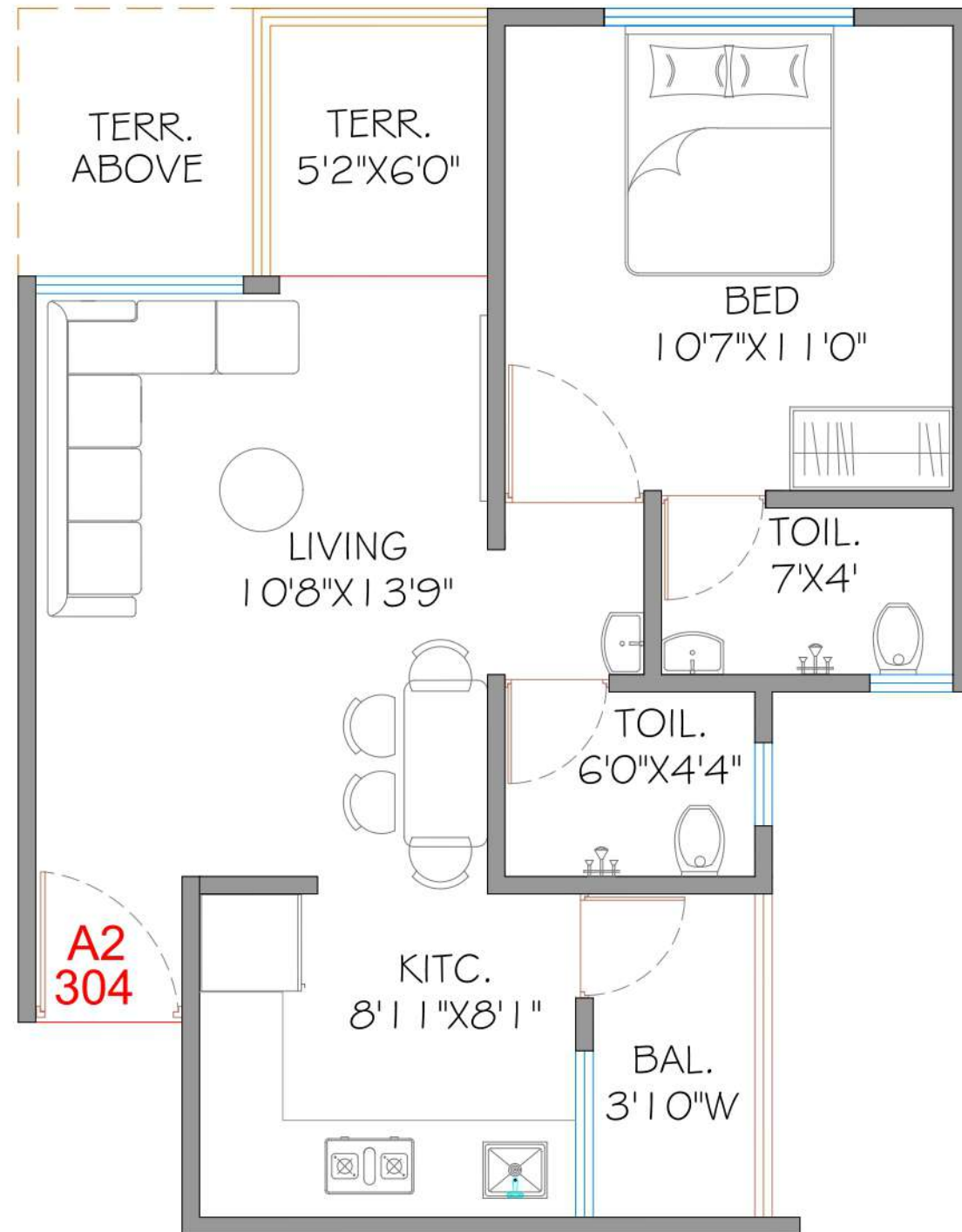
GARDEN



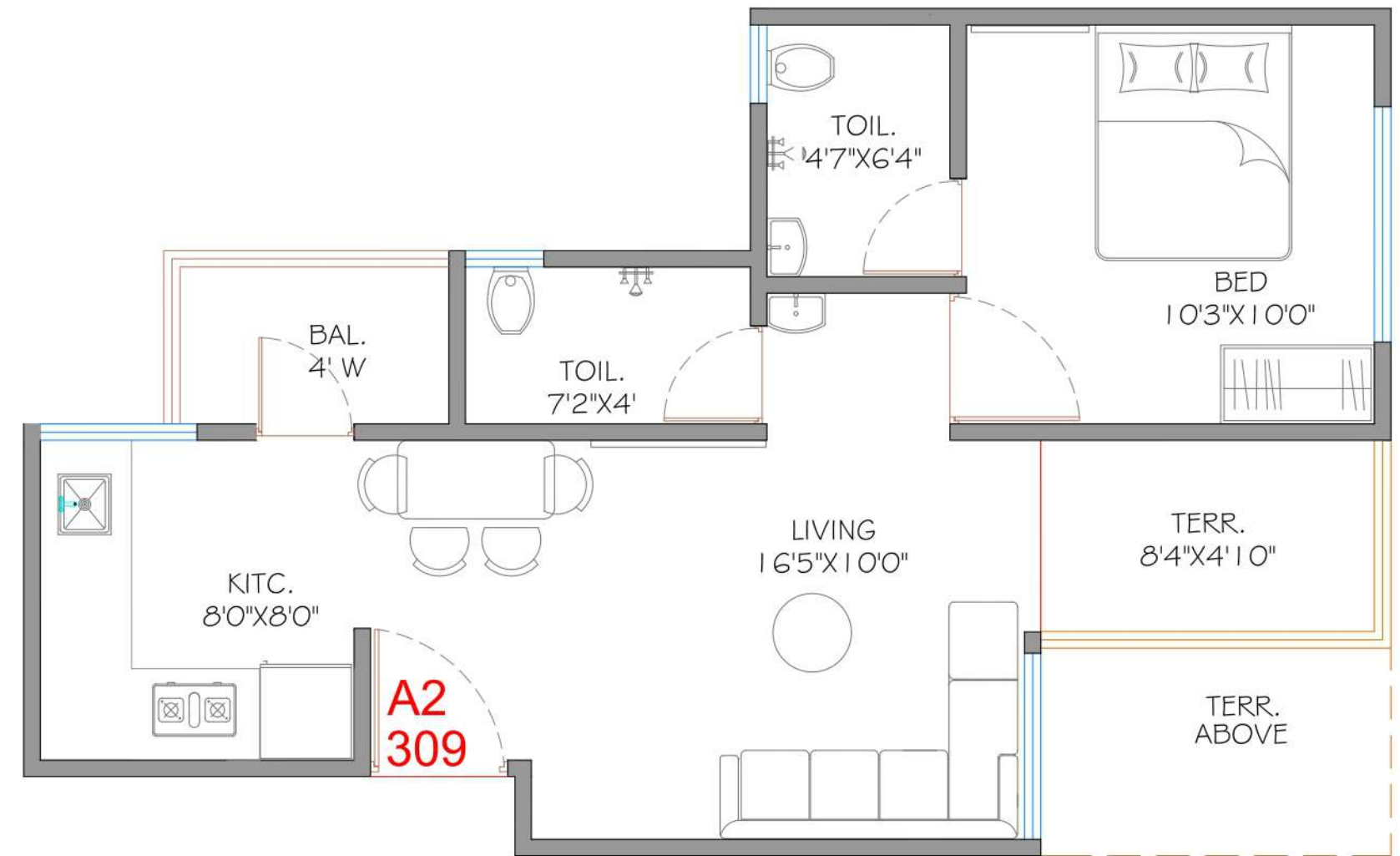


Actual Site Images

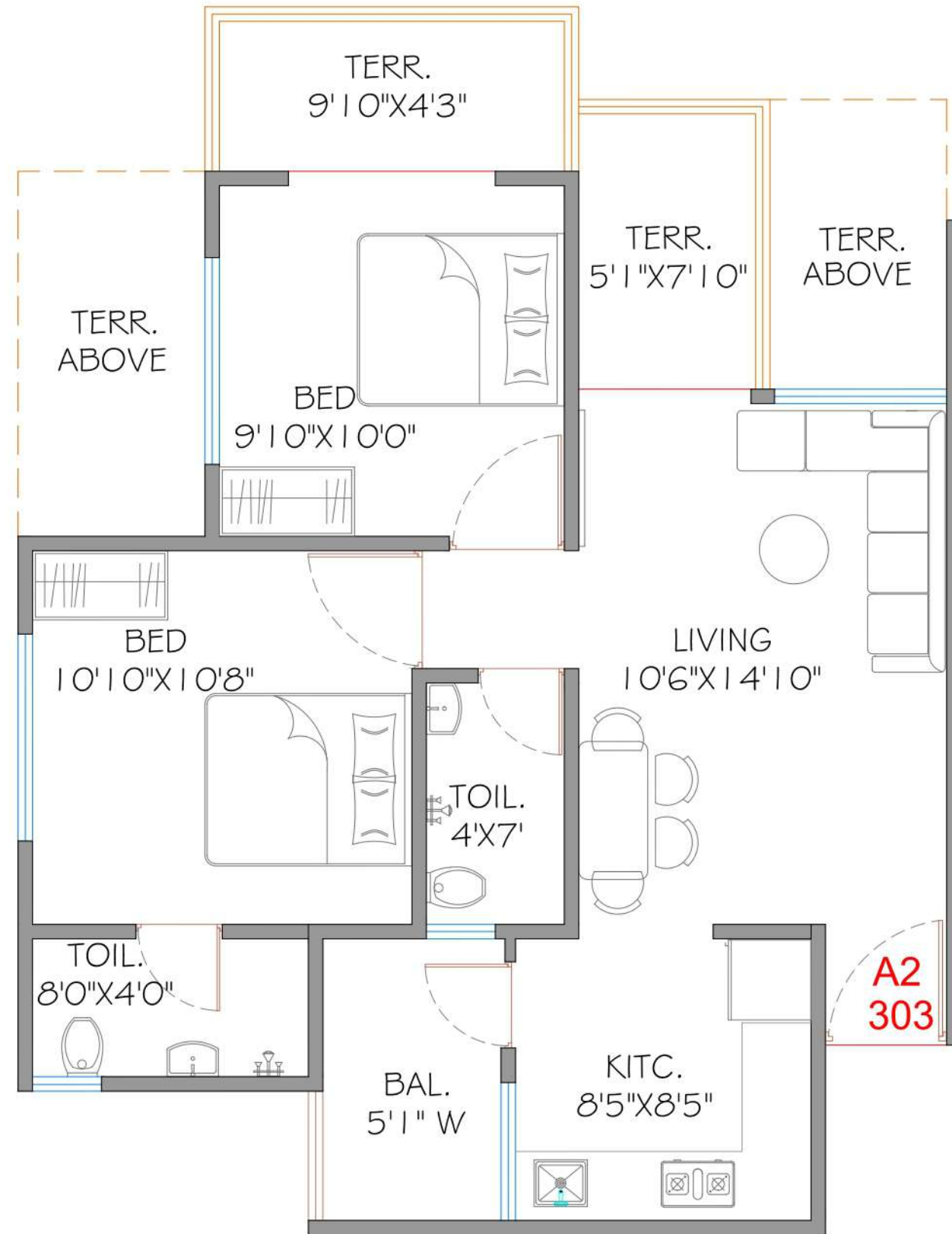




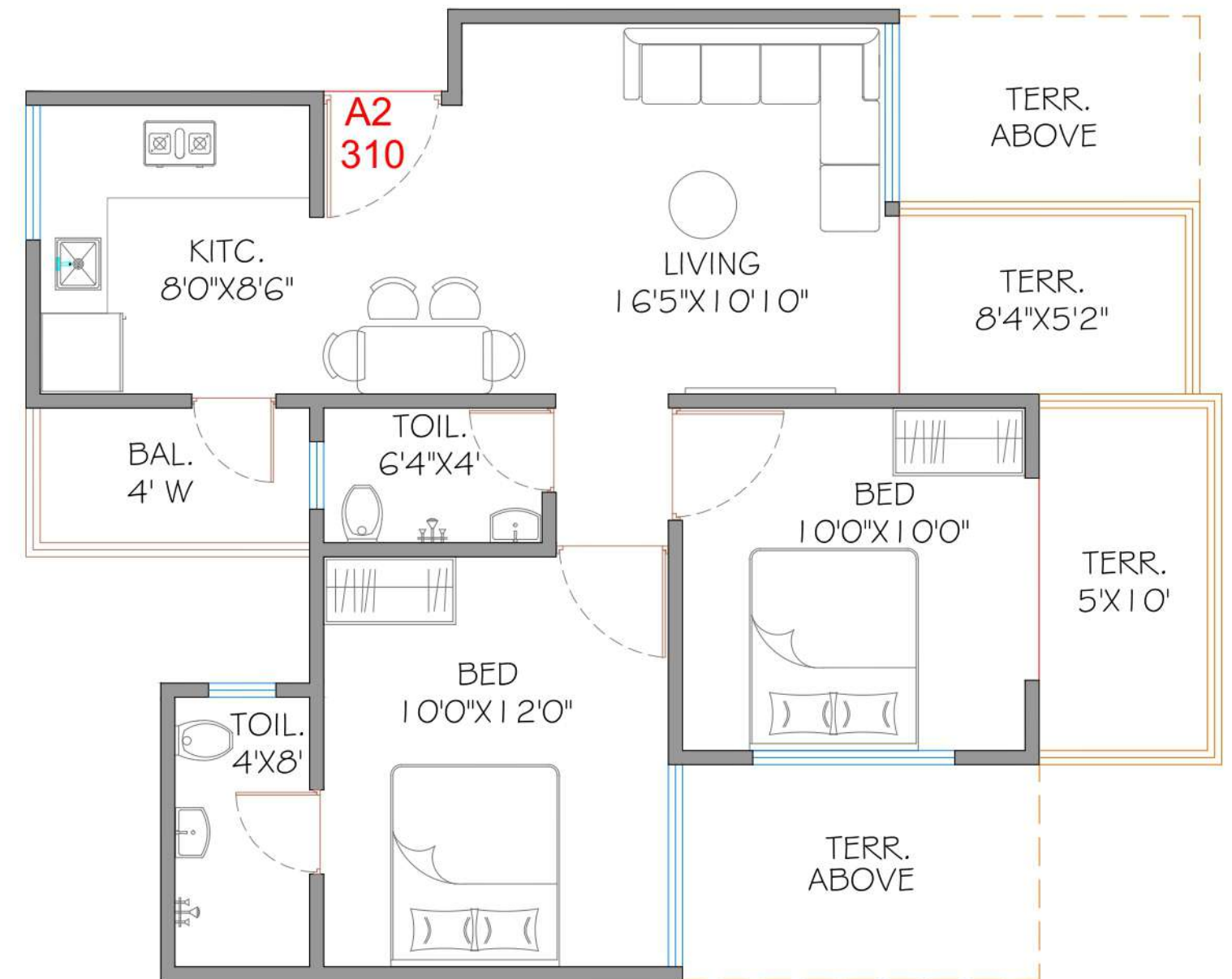
1 BHK CARPET AREA : 485 Sq.ft.



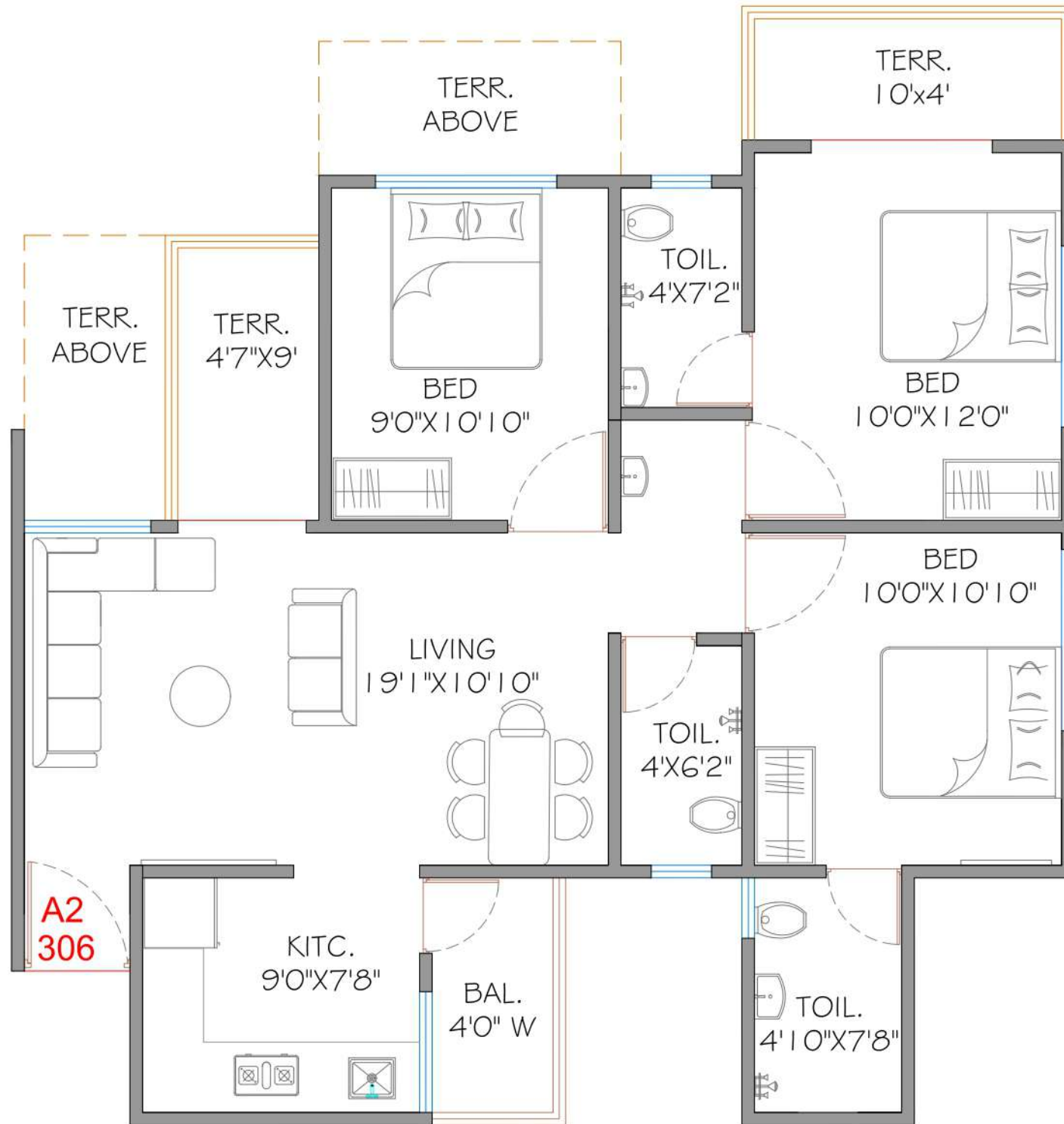
1 BHK CARPET AREA : 482 Sq.ft.



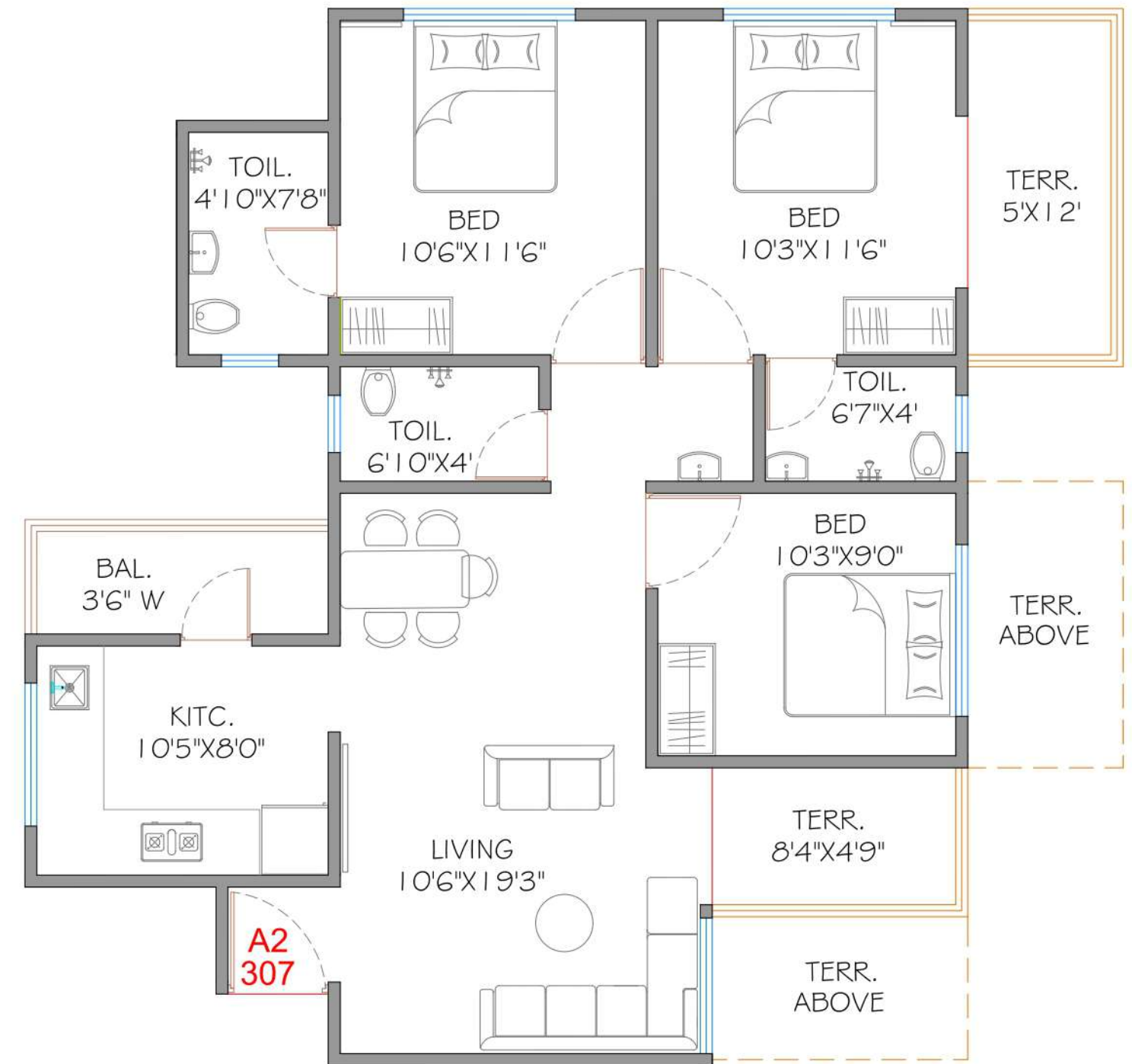
2 BHK CARPET AREA : 670 Sq.ft.



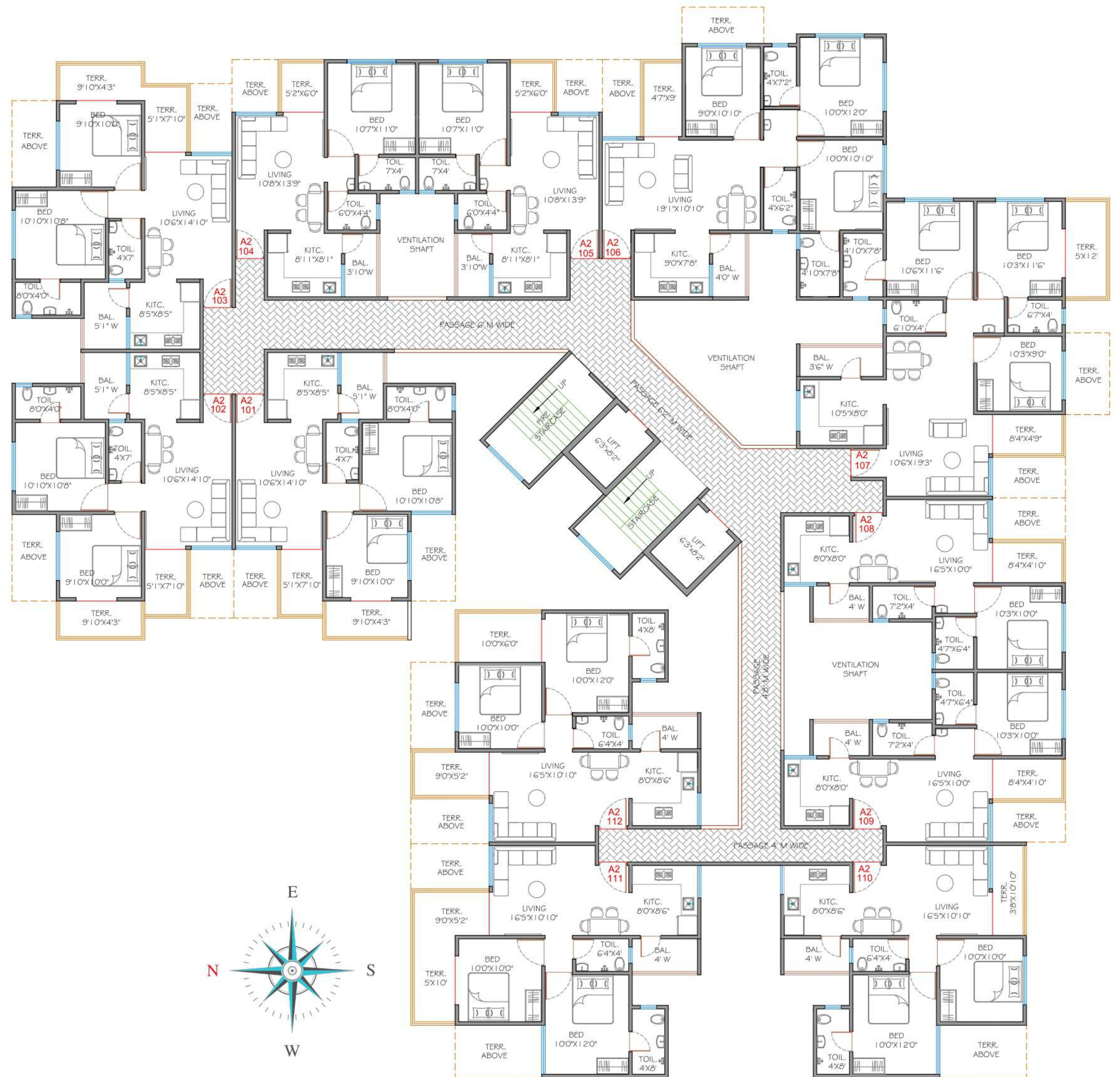
2 BHK CARPET AREA : 678 Sq.ft.



3 BHK CARPET AREA : 879 Sq.ft.

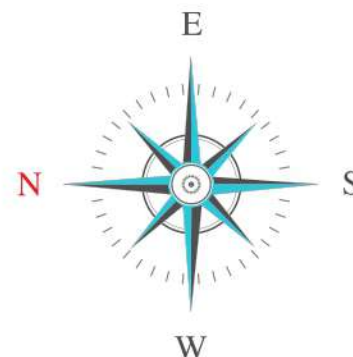


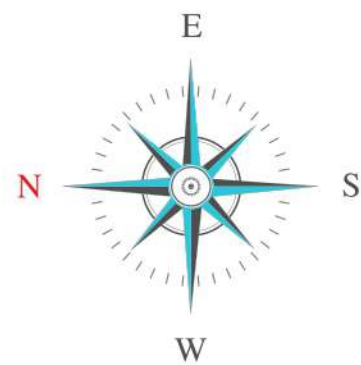
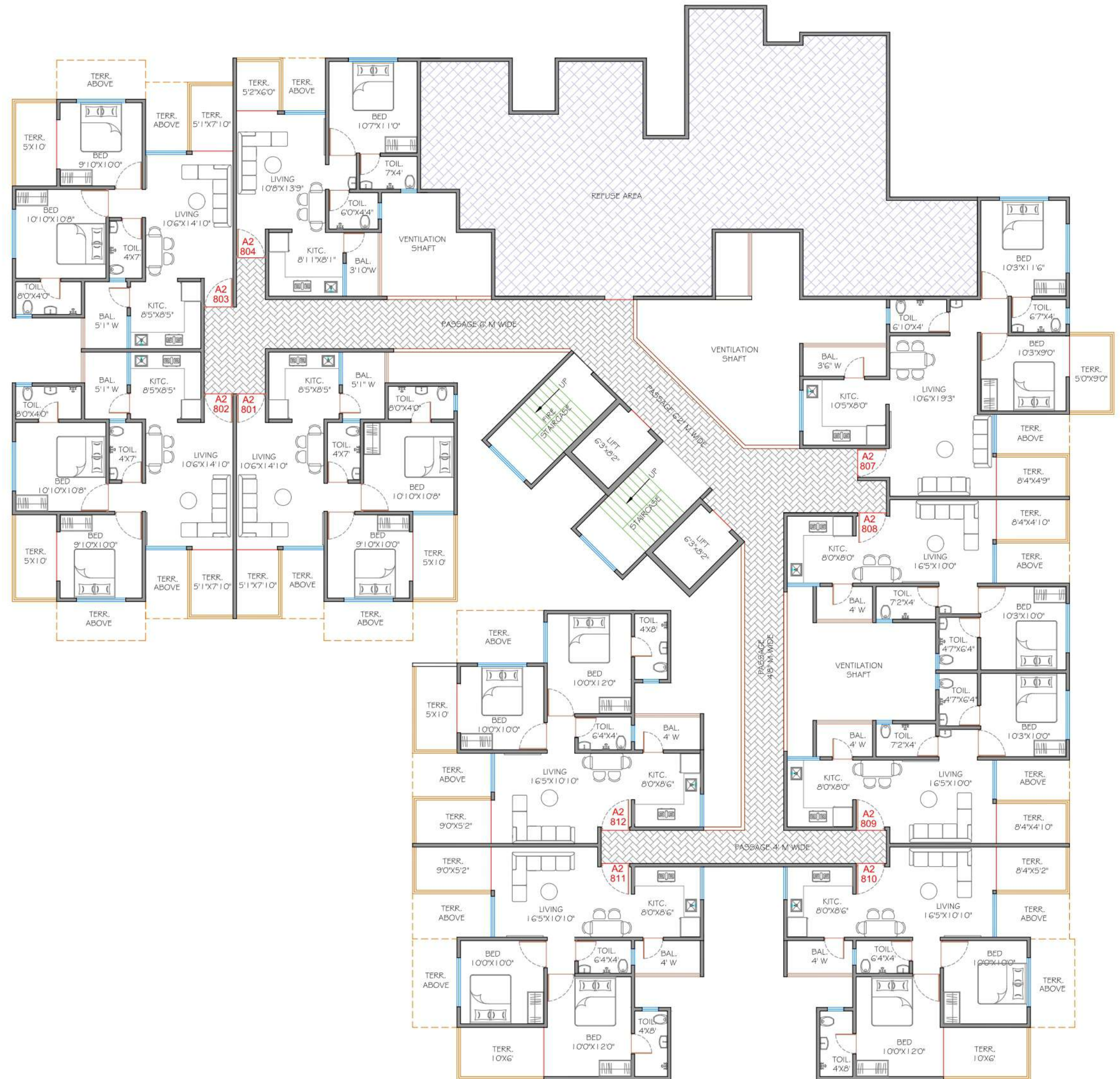
3 BHK CARPET AREA : 935 Sq.ft.



**A2** 1ST FLOOR PLAN

| FLAT NO   | CARPET (sqft) |
|---|---------------|
| 104, 105, 204, 205,<br>304, 305, 404, 405,<br>504, 505, 604, 605<br>704, 705, 804, 904,<br>905, 1004, 1005, 1104,<br>1105, 1204, 1205   | 485           |
| 108, 109, 208, 209,<br>308, 309, 408, 409<br>508, 509, 608, 609<br>708, 709, 808, 809<br>908, 909, 1008, 1009<br>1108, 1109, 1208, 1209 | 482           |





**A2** 8TH FLOOR PLAN

**A2** TYPICAL 2RD, 4TH, 6TH, 10TH, 12TH, FLOOR PLAN

| FLAT NO  | CARPET (sqft) |
|--|---------------|
| 101, 102, 103, 301, 302, 303, 501, 502, 503, 701, 702, 703, 901, 902, 903, 1101, 1102, 1103    | 670           |
| 110  | 623           |
| 111, 311, 511, 711, 911, 1111  | 681           |
| 112, 312, 512, 712, 912, 1112  | 696           |
| 201, 202, 203, 401, 402, 403, 601, 602, 603, 801, 802, 803, 1001, 1002, 1003, 1201, 1202, 1203 | 677           |
| 210, 410, 610, 810, 1010, 1210   | 688           |
| 212, 412, 612, 812, 1012, 1212   | 687           |
| 310, 510, 710, 910, 1110   | 678           |
| 211, 411, 611, 811, 1011, 1211   | 691           |
| 807  | 753           |

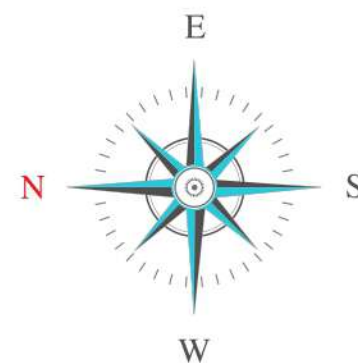






**A2** TYPICAL 3RD, 5TH, 7TH, 9TH, 11TH, FLOOR PLAN

| FLAT NO                       | CARPET (sqft) |
|-------------------------------|---------------|
| 106                           | 837           |
| 306, 506, 706, 906, 1106      | 879           |
| 107, 307, 507, 707, 907, 1107 | 935           |
| 206, 406, 606, 1006, 1206     | 875           |
| 207, 407, 607, 1007, 1207     | 923           |





## AMENITIES

- ❑ 2 Level Parking
- ❑ Cricket Court
- ❑ Swimming Pool
- ❑ Gymnasium
- ❑ Club House & Community Space
- ❑ Rain Water Harvesting
- ❑ Decorative Entrance Gate
- ❑ OTIS / KONE / SCHINDLER / JOHNSON etc.  
(Branded make) lift with Diesel Generator Backup
- ❑ Diesel Generator Backup for common Area
- ❑ CCTV Surveillance to common area
- ❑ Solar Water System
- ❑ 35000 Sq.Ft. Plus Green Area



# SPECIFICATION

## Structure:

RCC Framed - Earth Quake Resistance Structure

## Flooring:

800 mm x 800 mm Vitrified double charged Flooring in entire flat  
Anti Skid Flooring for all terrace & Bathroom

## Toilet & Bath

Designer Glazed Lintel Height tiles in Toilet & Bath  
Double coat Water Proofing with chemical treatment  
to all toilets & Terrace  
Concealed plumbing with Jaquar OR equivalent brand C.P Fitting

## Kitchen

Black granite kitchen platform with stainless steel sink  
Glazed tiles above kitchen platform up to lintel level  
Provision for exhaust

## Paint

Internal: Oil Bond acrylic etc.  
External: Asian Apex paint or equivalent branded

## Doors

Decorative Entrance door with quality fittings  
Granite door frame for bath toilet & terraces  
waterproof door for toilet

## Windows

Three Track powder coated aluminium sliding windows  
with safety grills  
Granite framing for windows

## Electrical

Concealed copper wiring with branded MCB  
Standard brand modular switches  
Ample electrical points  
Provision for inverter & AC Points





MAHA RERA No:  
**P52100021258**  
maharera.mahaonline.gov.in



**A Project By**  
Kesar Vighnaharta Group

**SITE ADDRESS** KESAR TREE TOWN

Gat No. 18 (p), 34(p), 37(p), 38, 39, 40, Moshi Alandi  
BRTS Road, Moshi Chowk, Moshi, Pune - 412105

**Call : 788 788 0077**  
**788 788 0099**  
[www.kesartreetown.com](http://www.kesartreetown.com)

*Note: This brochure is purely conceptual and not a legal offering nor will be part of agreement. Nothing contained in this brochure will take precedence in the final agreement. Developers reserves all absolute rights to change, cancel, amend any plans, layout, amenities/specification/elevation without assigning any prior notice.*