

GROUND FLOOR PLAN



30.00 MT. WIDE ROAD

PARKING PROPOSED ON GROUND FLOOR = 19 NOS

Please Note: The interiors, furniture, fittings, fixtures, etc. shown in the image/drawing are for the purpose of showcasing only for the artist's conception and not part of the actual amenities provided. The actual amenities as mentioned in the Agreement for sale shall be final and provided in the flats. All dimensions of carpet area are from unfinished wall surface. Minor variations/tolerance of +/- 3% in carpet area may occur on account of design and/or construction exigencies.

1ST FLOOR PLAN



Please Note: The interiors, furniture, fittings, fixtures, etc. shown in the image/drawing are for the purpose of showcasing only for the artist's conception and not part of the actual amenities provided. The actual amenities as mentioned in the Agreement for sale shall be final and provided in the flats. All dimensions of carpet area are from unfinished wall surface. Minor variations/tolerance of +/- 3% in carpet area may occur on account of design and/or construction exigencies.

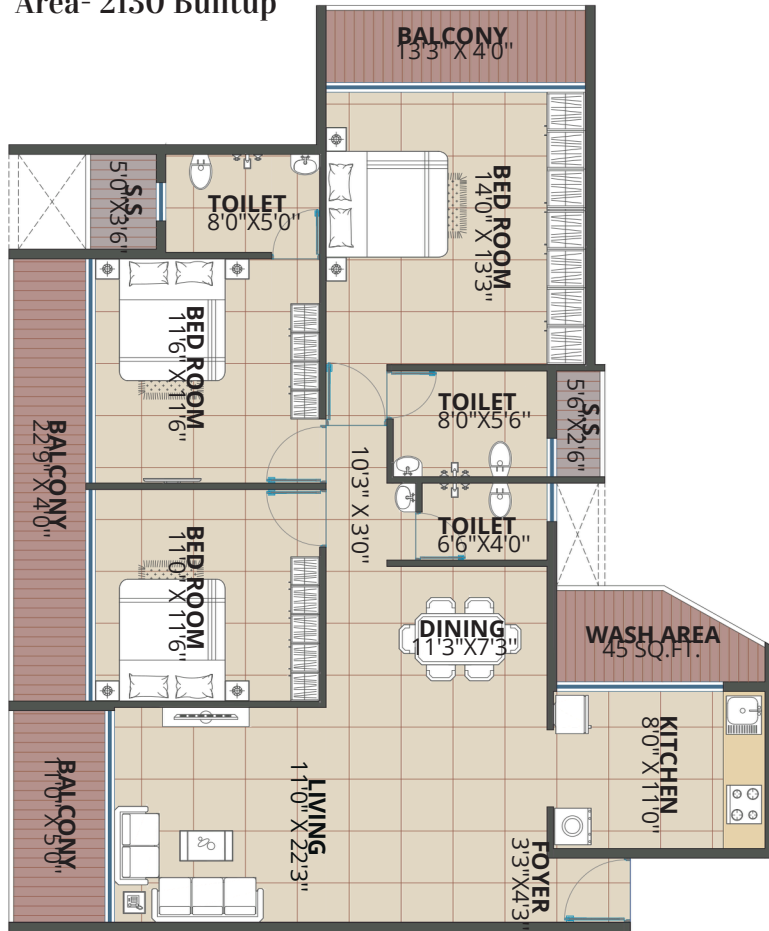
TYPICAL FLOOR PLAN



Please Note: The interiors, furniture, fittings, fixtures, etc. shown in the image/drawing are for the purpose of showcasing only for the artist's conception and not part of the actual amenities provided. The actual amenities as mentioned in the Agreement for sale shall be final and provided in the flats. All dimensions of carpet area are from unfinished wall surface. Minor variations/tolerance of +/- 3% in carpet area may occur on account of design and/or construction exigencies.

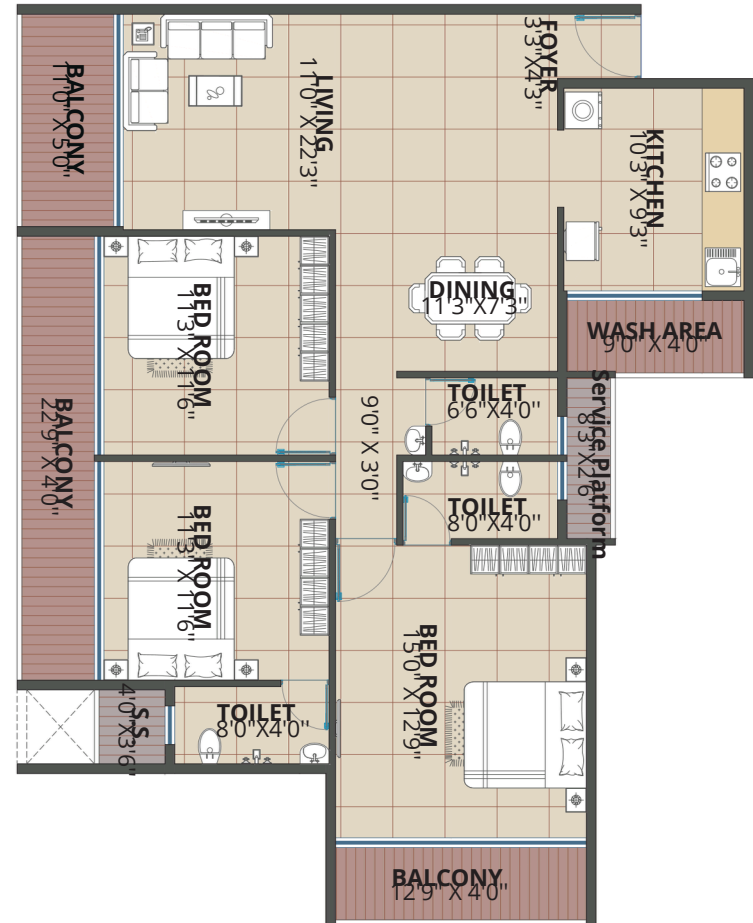
3 BHK UNIT - TYPE 1

Area- 2130 Builtup



3 BHK UNIT - TYPE 2

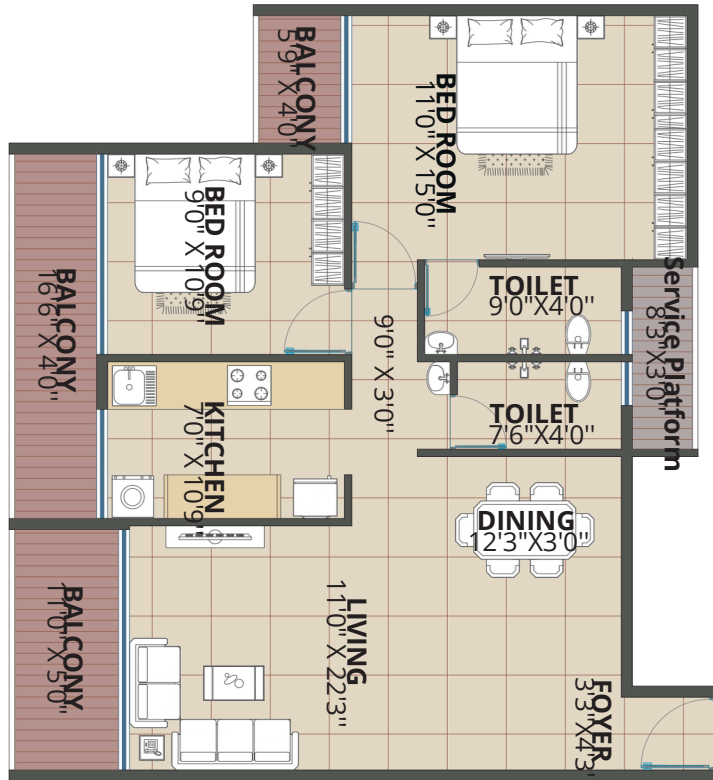
Area- 2085 Builtup



Please Note: The interiors, furniture, fittings, fixtures, etc. shown in the image/drawing are for the purpose of showcasing only for the artist's conception and not part of the actual amenities provided. The actual amenities as mentioned in the Agreement for sale shall be final and provided in the flats. All dimensions of carpet area are from unfinished wall surface. Minor variations/tolerance of +/- 3% in carpet area may occur on account of design and/or construction exigencies.

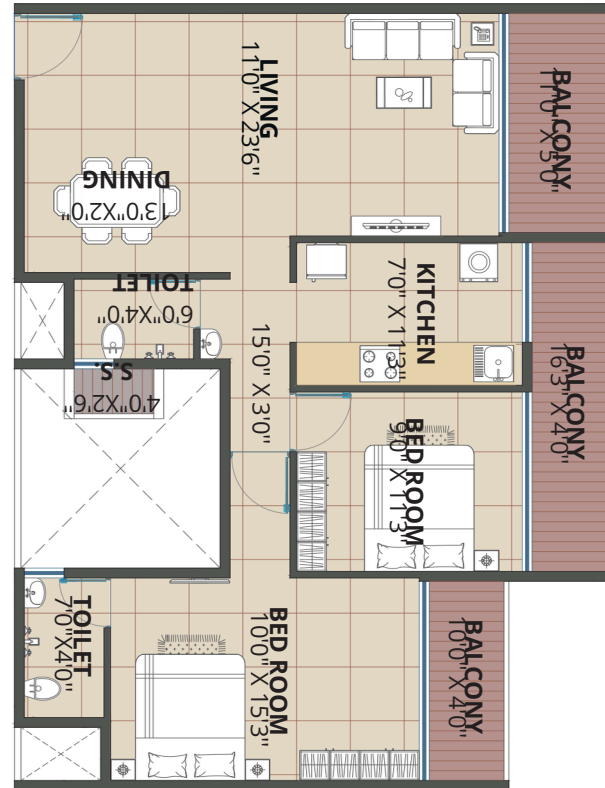
2 BHK UNIT - TYPE 1

Area- 1475 Builtup



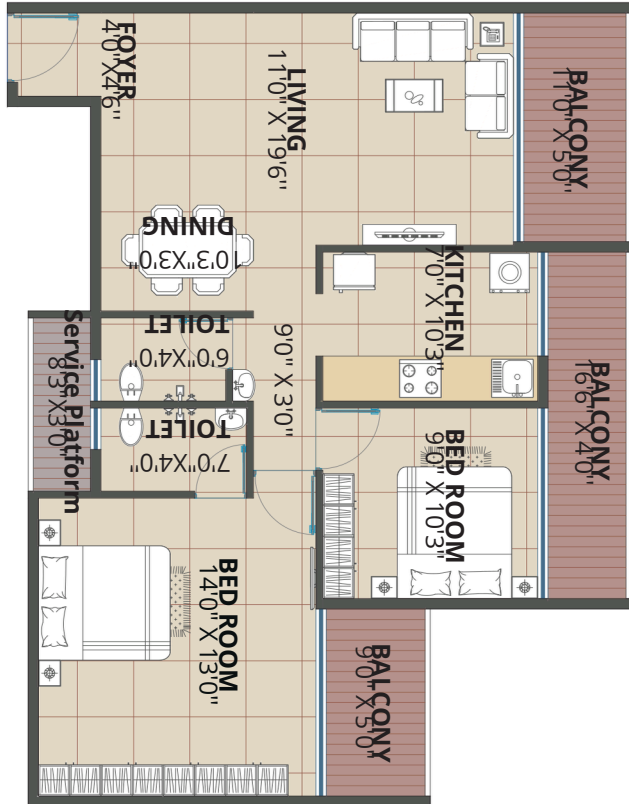
2 BHK UNIT - TYPE 2

Area- 1465 Builtup

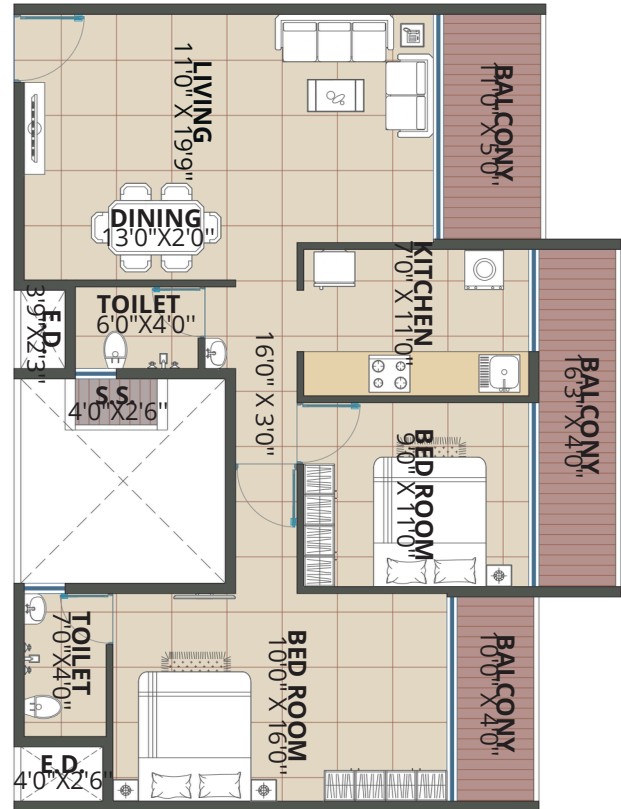


Please Note: The interiors, furniture, fittings, fixtures, etc. shown in the image/drawing are for the purpose of showcasing only for the artist's conception and not part of the actual amenities provided. The actual amenities as mentioned in the Agreement for sale shall be final and provided in the flats. All dimensions of carpet area are from unfinished wall surface. Minor variations/tolerance of +/- 3% in carpet area may occur on account of design and/or construction exigencies.

2 BHK UNIT - TYPE 3
Area- 1450 Builtup

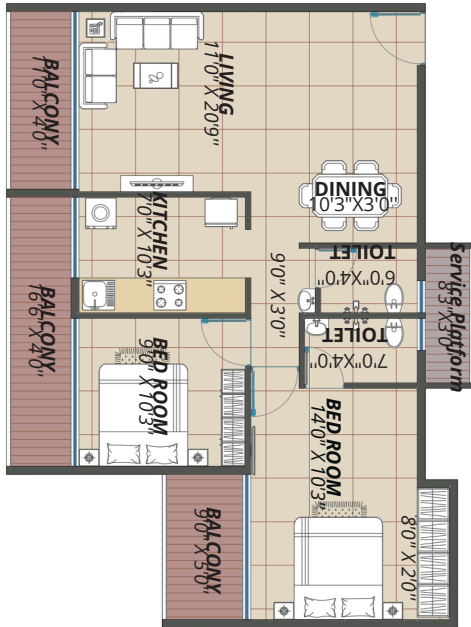


2 BHK UNIT - TYPE 4
Area- 1395 Builtup



Please Note: The interiors, furniture, fittings, fixtures, etc. shown in the image/drawing are for the purpose of showcasing only for the artist's conception and not part of the actual amenities provided. The actual amenities as mentioned in the Agreement for sale shall be final and provided in the flats. All dimensions of carpet area are from unfinished wall surface. Minor variations/tolerance of +/- 3% in carpet area may occur on account of design and/or construction exigencies.

2 BHK UNIT - TYPE 5
Area- 1385 Builtup



2 BHK UNIT - TYPE 6
Area- 1330 Builtup



2 BHK UNIT - TYPE 7
Area- 1300 Builtup



Please Note: The interiors, furniture, fittings, fixtures, etc. shown in the image/drawing are for the purpose of showcasing only for the artist's conception and not part of the actual amenities provided. The actual amenities as mentioned in the Agreement for sale shall be final and provided in the flats. All dimensions of carpet area are from unfinished wall surface. Minor variations/tolerance of +/- 3% in carpet area may occur on account of design and/or construction exigencies.