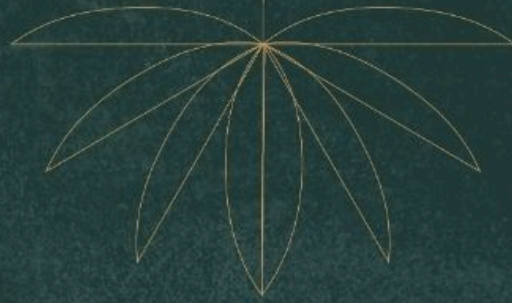




GK Gateway Brochure

Where Modern Living Meets Luxury

GK Gateway redefines urban lifestyle with premium homes, world-class amenities, and thoughtful design. A perfect blend of modern architecture, comfort, and convenience, making every day extraordinary.



AN INVITATION TO
GRAND LIVING,
THE GLORIOUS WAY

GK
GATEWAY

⇒ Bou que Luxury Apartments ⇒

@ ECC Road, Pa andur Agrahara, Whitefield



Rera No. PRM/KA/RERA/1251/446/PR/060923/006245



Project Overview

Experience premium living with state-of-the-art architecture and elegant designs at GK Gateway. This project is crafted to cater to families seeking a lifestyle that balances luxury with functionality.

- ✓ Vaastu Compliant Homes with optimal planning
- ✓ Spacious 2BHK & 3BHK Layouts with natural ventilation
- ✓ Premium Construction Quality using durable materials
- ✓ Earthquake-resistant RCC structure
- ✓ Eco-friendly design with rainwater harvesting





World-Class Amenities

A host of modern conveniences designed to complement your lifestyle and provide a resort-like living experience.

- ✓ 24x7 Security & CCTV surveillance
- ✓ Power Backup for common areas & apartments
- ✓ High-speed Elevators with ARD system
- ✓ Clubhouse with multipurpose hall
- ✓ Well-equipped Gym & Indoor Games
- ✓ Children's Play Area & Landscaped Gardens
- ✓ Swimming Pool & Jogging Track





Elegant Interiors

Contemporary interiors designed with premium finishes, abundant natural light, and space optimization. Every detail reflects sophistication and elegance.

- ✓ Designer false ceiling with concealed lighting
- ✓ Premium paint finishes on walls & ceilings
- ✓ Spacious balconies with scenic views
- ✓ Large windows ensuring cross ventilation



Spacious Floor Plans

- ✓ **2 BHK:** Designed for compact yet luxury living, featuring efficient layouts with modern utilities.

- ✓ **3 BHK:** Spacious layouts with multiple balconies, large living areas, and private bedrooms.
- ✓ Smart space utilization for comfort & convenience
- ✓ Flexible designs suitable for families of all sizes

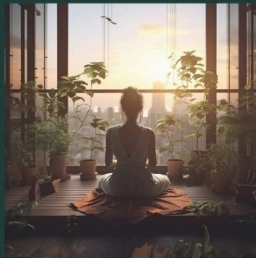


◆◆
**AN OASIS WITHIN,
 WHERE YOU CAN FIND YOUR GETAWAY**
 Modern amenities to ensure wellness and leisure, at GK Gateway, worries of urban chaos seem far out of measure.
 ◆◆

GK GATEWAY
 Bou que Luxury Apartments



Gym



Yoga/Meditation



Multipurpose Hall



Jogging Track

Specifications

- ✓ **Flooring:** Premium Vitrified Tiles in all rooms
- ✓ **Doors:** Solid Teak Veneer Main Door with premium hardware
- ✓ **Windows:** UPVC with Glass Panels and mosquito mesh provision
- ✓ **Walls:** Smooth finish with high-quality putty and emulsion paint
- ✓ **Electrical:** Branded switches & concealed copper wiring

✓ **Plumbing:** Superior quality CP fittings & sanitary ware



Area Statement

Well-planned 2BHK & 3BHK flats with good ventilation, natural light, and multiple facing options.

- ✓ Flat 1 – 3BHK, West – 1690 sft
- ✓ Flat 2 – 2BHK, West – 1230 sft
- ✓ Flat 3 – 2BHK, West – 1230 sft
- ✓ Flat 4 – 2BHK, West – 1230 sft
- ✓ Flat 5 – 2BHK, West – 1230 sft

✓ Flat 6 – 2BHK, East – 1185 sft



Community Living

A well-planned community with landscaped surroundings, peaceful ambiance, and modern facilities that foster togetherness and security.

- ✓ Landscaped gardens with seating areas
- ✓ Dedicated kids' play zones
- ✓ Ample car parking with EV charging points
- ✓ Rainwater harvesting & sewage treatment plant



SPECIFICATIONS

- STRUCTURE** : RCC framed structure
- WALL** : Cement Bricks (6" for all external walls & 4" for internal walls)
- PLASTERING** : Cement Mortar in Sponge Finish
- DOORS**
Main Door : Teak wood frame and Shu er teak finishing door malaysian skin with outside brass fitting.
Internal Doors : Country wood frame with factory-made flush shu er.
Windows : Three Track UPVC Windows with mosquito mesh with MS Grills with enamel paint.
- PAINTING**
External walls with apex paints
Internal walls are smooth finished with wall care (Birla/JK) base and top finish with two coats of emulsion paint (Asian/Dulex/Nerolac/equivalent make).
Wood work with enamel paint
- FLOORING**
Vitrified flooring 800x800 les in living, dining and bedrooms.
2'x4' bathroom wall les (digital les)
An-skid les in u lity, toilets and balcony.
Granite in lobby & Common area
- KITCHEN**
The kitchen pla orm shall be with black granite on one side of the room with a Fiber-sink and le doodling up to 24" above the pla orm.

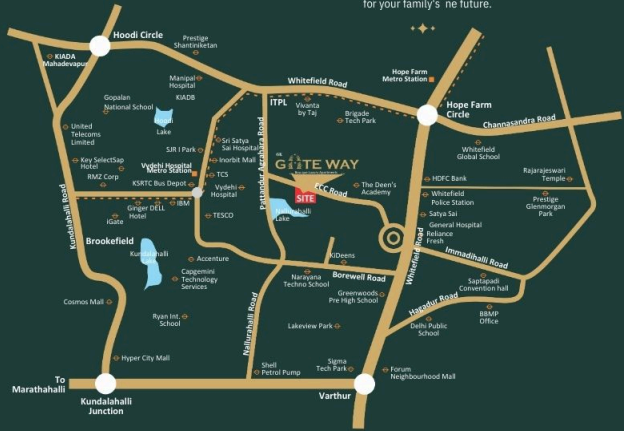
BEST BRANDS AND CLASSY CRAFTSMANSHIP, IMPECCABLE ALL THE WAY

- TOILETS** European W/C type closets (Parryware/Hindware/Jaguar/Equivalent) fitted with required taps, valves etc. Provision for Electrical geyser point together with necessary fixtures for water supply Tile dadoing up to 7' height.
- ELECTRIFICATION** Concealed copper wiring (Great White/ Polycab /BB /Anchor) for a three-phase power supply shall be provided. Modular switches (Havells/Legrand/ Anchor/Indo Asian/Equivalent) will be provided on each board.
- BALCONIES** One light point in Exch balcony, a washing machine power Point shall be provided in any balcony. **CABLE TV** : Provision for cable TV connec on, internal wiring provided up to living and master bedroom.
- WATER SUPPLY & SANITARY** Parryware/ESS/Cera/Jaguar ESS or its equality brand taps (commercial quality). Ashirvad/ Astral/ Prince/Supreme/Equivalent pipelines for water supply arrangement Provision for washing machine in u lity area.
- LIFT** : 3 li s ISI Make (KONE/OTIS/Yash/Equivalent)
- GENERATOR** : Generator backup for li , Common light ng, three lights and two fan points in all the flats.

Note : Parking, Registra on, GST, any other taxes, Electricity connec on, Municipal Water, Piped gas and addi onal applicable charges are extra.



LOCATION PLAN (NOT TO SCALE)



THE BEST OF BENGALURU, MERE MINUTES AWAY

Adream address wherework-life balance connectivity and opportunity all come together, creating a harmonious backdrop for your family's ne future.

- WORK PLACES**
Shantiniketan Commercial Block-500mts.
ITPL - 1.5kms
IBM - 1.7kms
TCS - 2.4kms
Oracle - 3.4kms
Cessna Business Park - 10.2kms
Near by Metro Stations

- STAR HOTELS**
The Zuri - Opposite Shantiniketan - 0.28kms
Vivanta by Taj - 1.8kms
The Marriot - 2.1kms
The Ailla - 6.6kms

- SCHOOLS**
Sharada Vidya Mandir - 0.28kms
Prestige Shantiniketan - 600mtrs.
Gopalan School - 2.5kms
Brigade School - 3.1kms
Ryan Int. School - 5.4kms

- HOSPITALS**
Narayana Hospital - 1.4kms
Satya Sai Hospital - 2.1kms
Vydehi Hospital - 2.7kms
Brookfield Hospital - 5.1kms
Columbia Asia Hospital-6 kms
Yashomati Hospital - 6.3kms

- SHOPPING MALLS**
Ascendas Park Square Mall - 1.3kms
Inorbit Mall - 2.8kms
Forum Value Mall - 2.9kms
Brookfield Mall - 3.4kms
Phoenix Market City - 4.8kms



Location QR Code

Prime Location

Located at the heart of the city with seamless connectivity to business hubs, educational institutions, and healthcare facilities.

- ✓ 5 mins to International Schools
- ✓ 10 mins to Top Hospitals
- ✓ Nearby IT & Business Parks
- ✓ Close to Shopping Malls & Entertainment Zones
- ✓ Well-connected by Metro, Road & Public Transport



Why Choose GK Groups?

- ✓ Exclusive flats ensuring privacy and comfort
- ✓ Modern architecture with timeless appeal
- ✓ Premium construction with luxury finishes
- ✓ Trusted brand with 25+ years of excellence
- ✓ Eco-friendly and sustainable development
- ✓ Unmatched connectivity and urban convenience