

SAY YES TO YOUR DREAM HOME

ARJITH ALLURE

CRAWFORD, TRICHY

LUXURIOUS

2&3 BHK

35 CURATED APARTMENTS



ARJITH PROPERTY DEVELOPERS



WELCOME TO ARJITH ALLURE

Welcome to Arjith Allure, where comfort meets luxury in our meticulously designed 2 and 3 BHK apartments. Experience the ultimate in modern, convenient living with spacious interiors that maximize natural light and ventilation. Each apartment features a modular kitchen with high-quality finishes and elegant bathrooms equipped with stylish, premium fixtures. Enjoy your private balcony as a personal retreat to relax and unwind. Our project is located just 2 km away from Central bus stand and 10 minute drive from Panjappur bus stand has great connectivity to major cities making it an ideal investment. As the area continues to grow, property values are expected to rise significantly.



ARJITH ALLURE

- Efficiently planned living spaces
- Beautiful landscapes around the building with 25ft frontage
- Vaastu compliant homes with zero dead space
- Strict adherence to approved plan
- On time delivery
- Quality assurance
- All flats prewired for telephone, TV-DTH, Internet / Data service
- Private balcony
- Personal parking space
- 24x7 security with cctv
- 100% power backup for lift and common area lighting
- Two 6 passenger lifts
- AC provision in living and bedroom



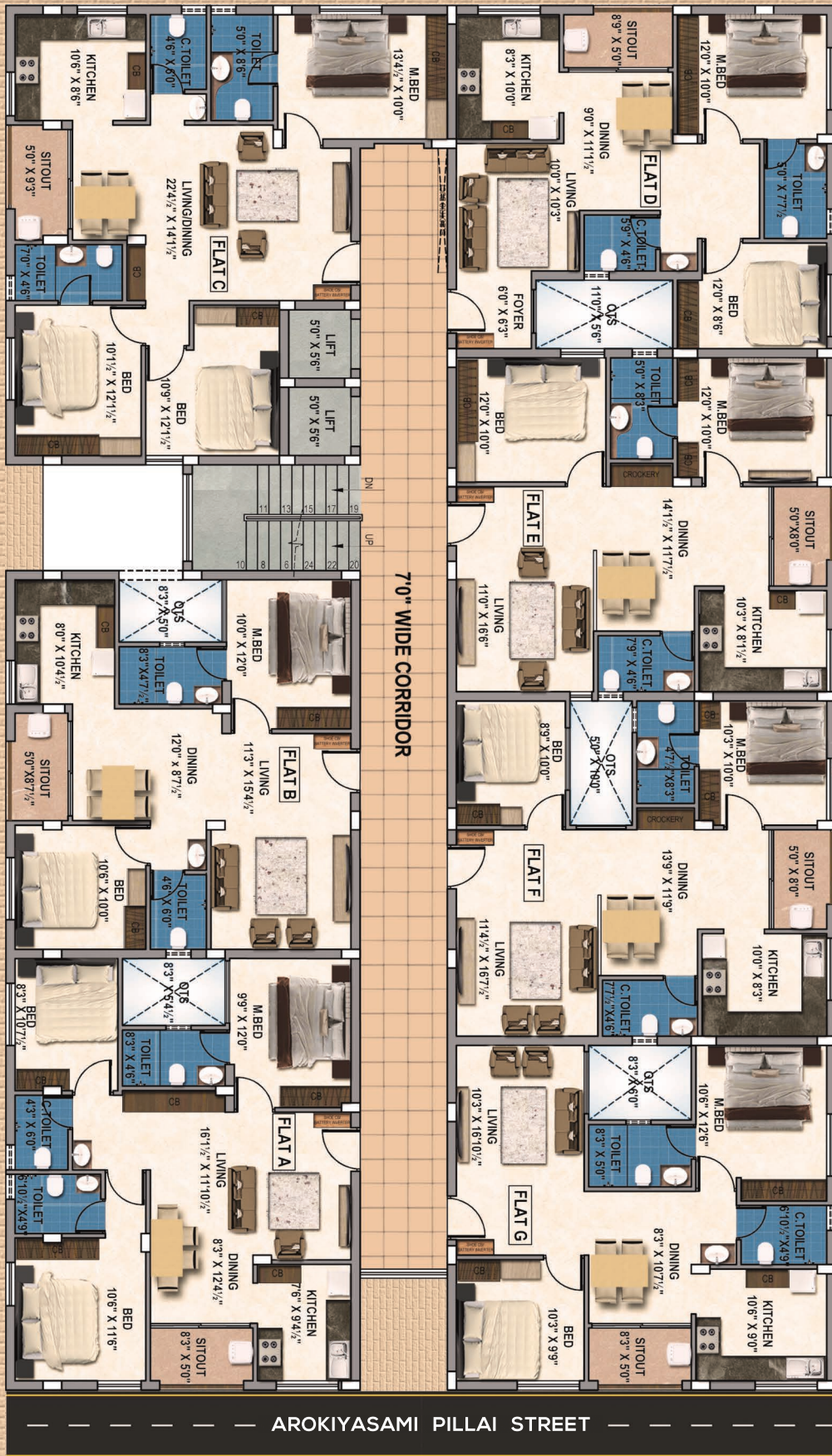
TYPICAL FLOOR PLAN

ARJITH ALLURE
CRAWFORD, TRICHY

FLAT C - 1243 SQ.FT

FLAT B - 969 SQ.FT

FLAT A - III2 SQ.FT



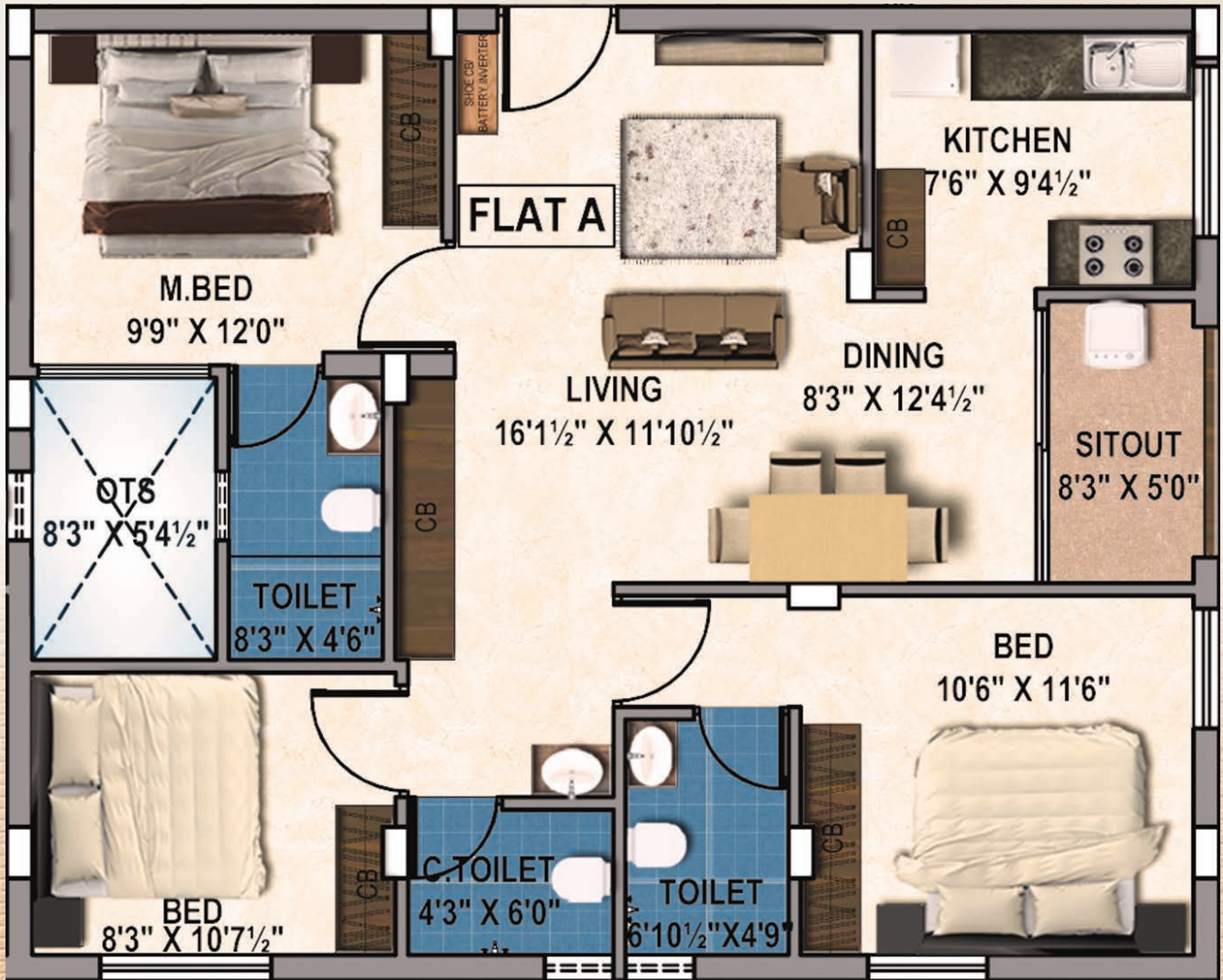
FLAT D - 939 SQ.FT

FLAT E - 1010 SQ.FT

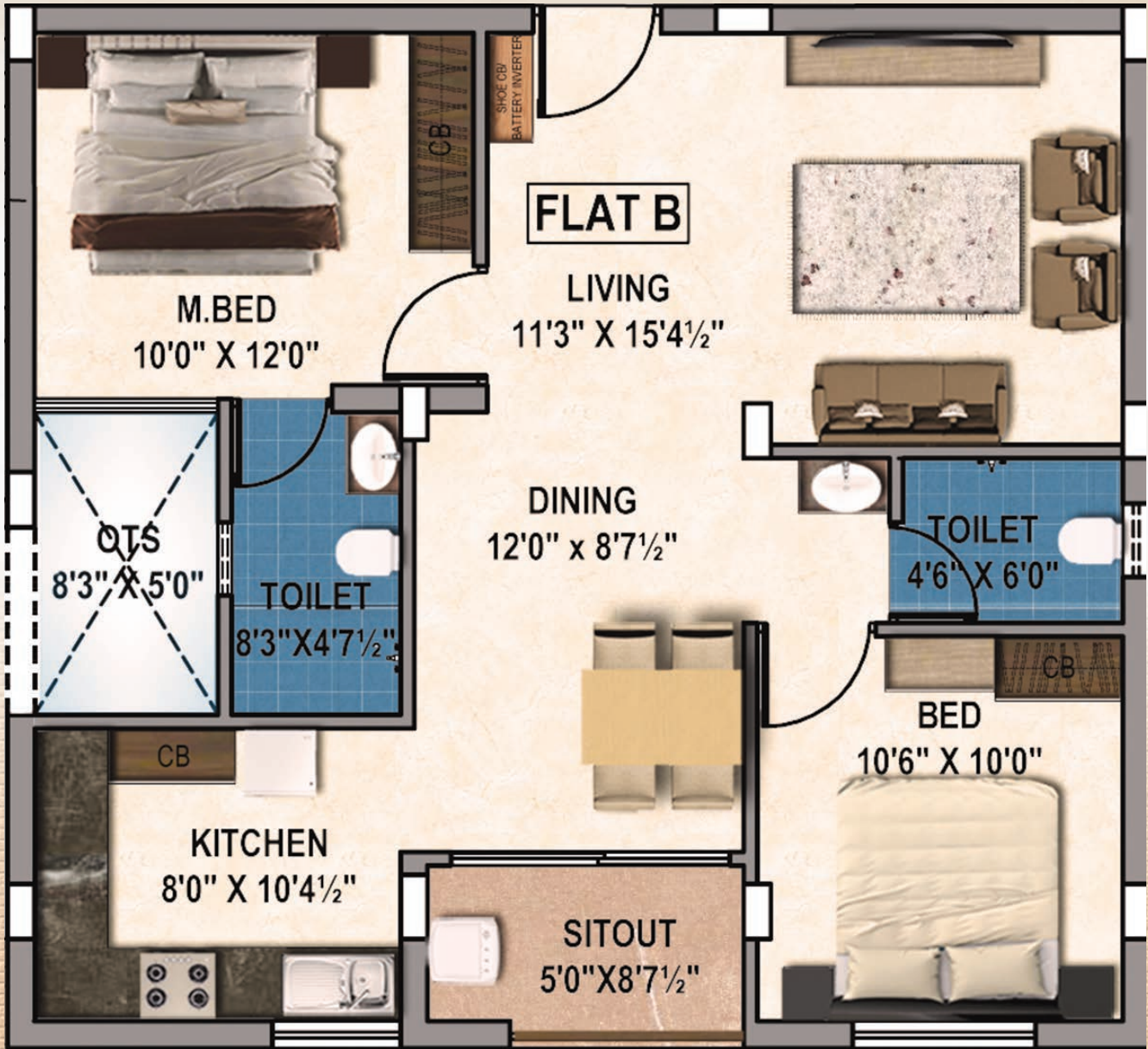
FLAT F - 953 SQ.FT

FLAT G - 962 SQ.FT

FLAT A - 1112 SQ.FT



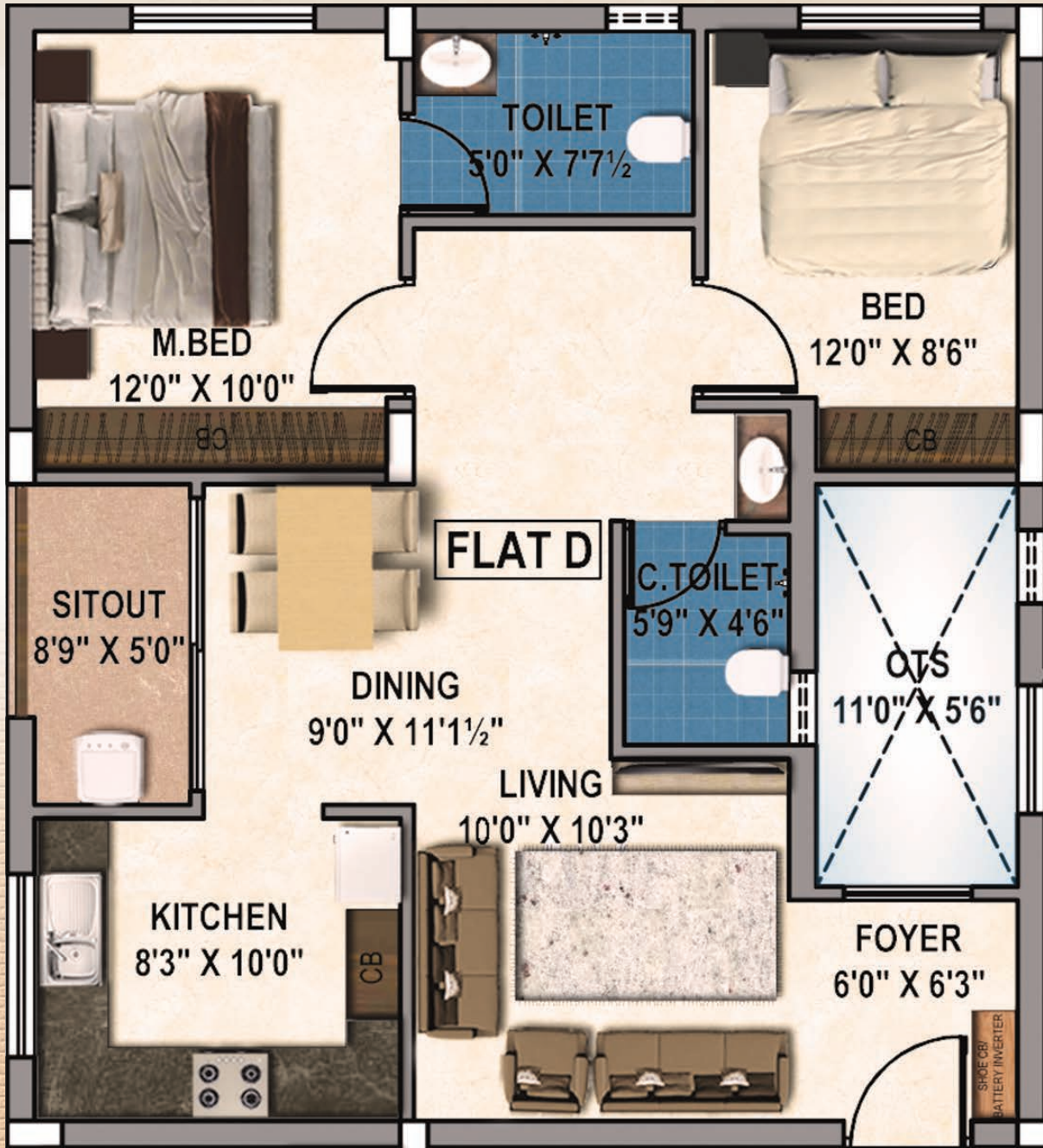
FLAT B - 969 SQ.FT



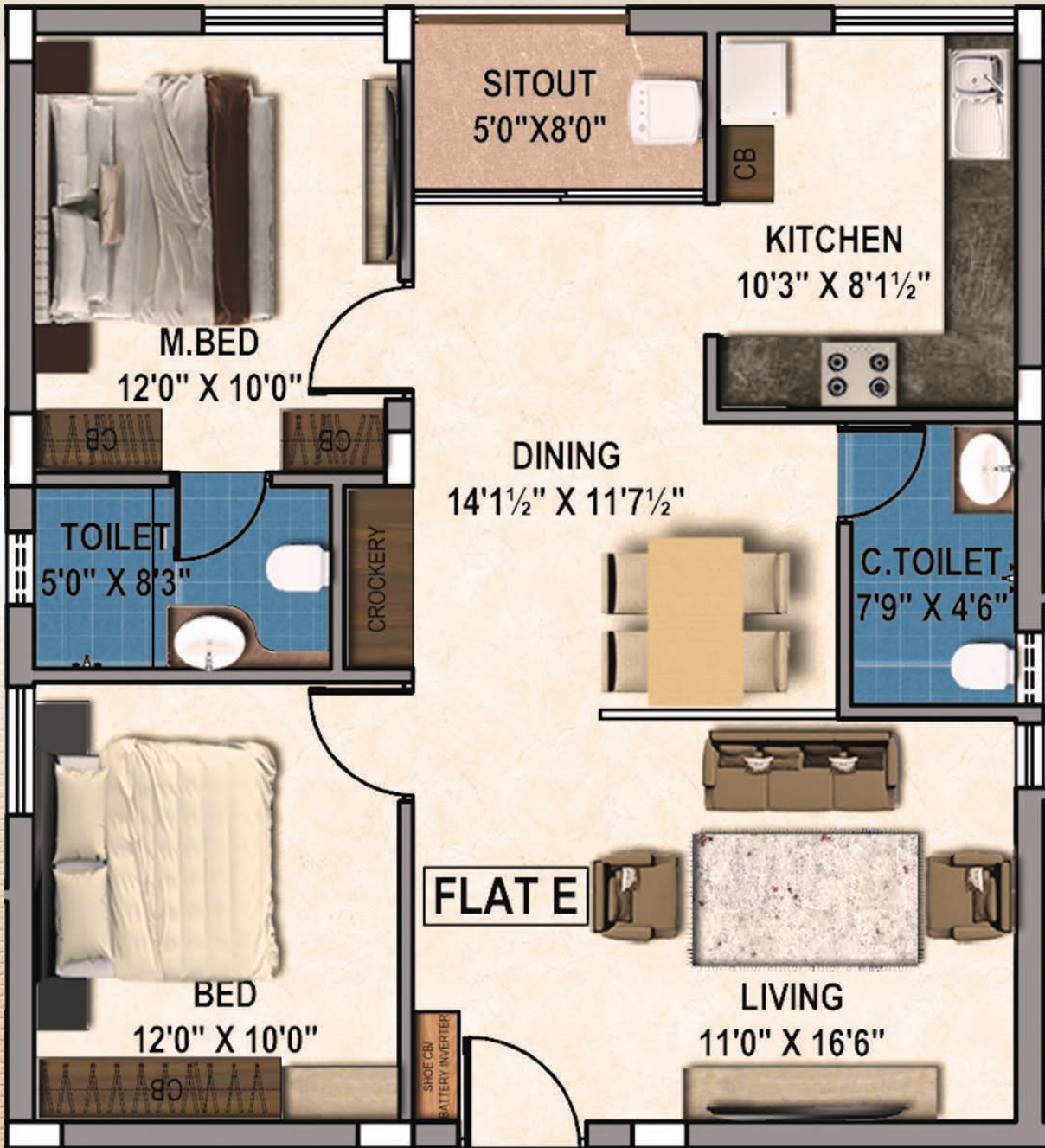
FLAT C - 1243 SQ.FT



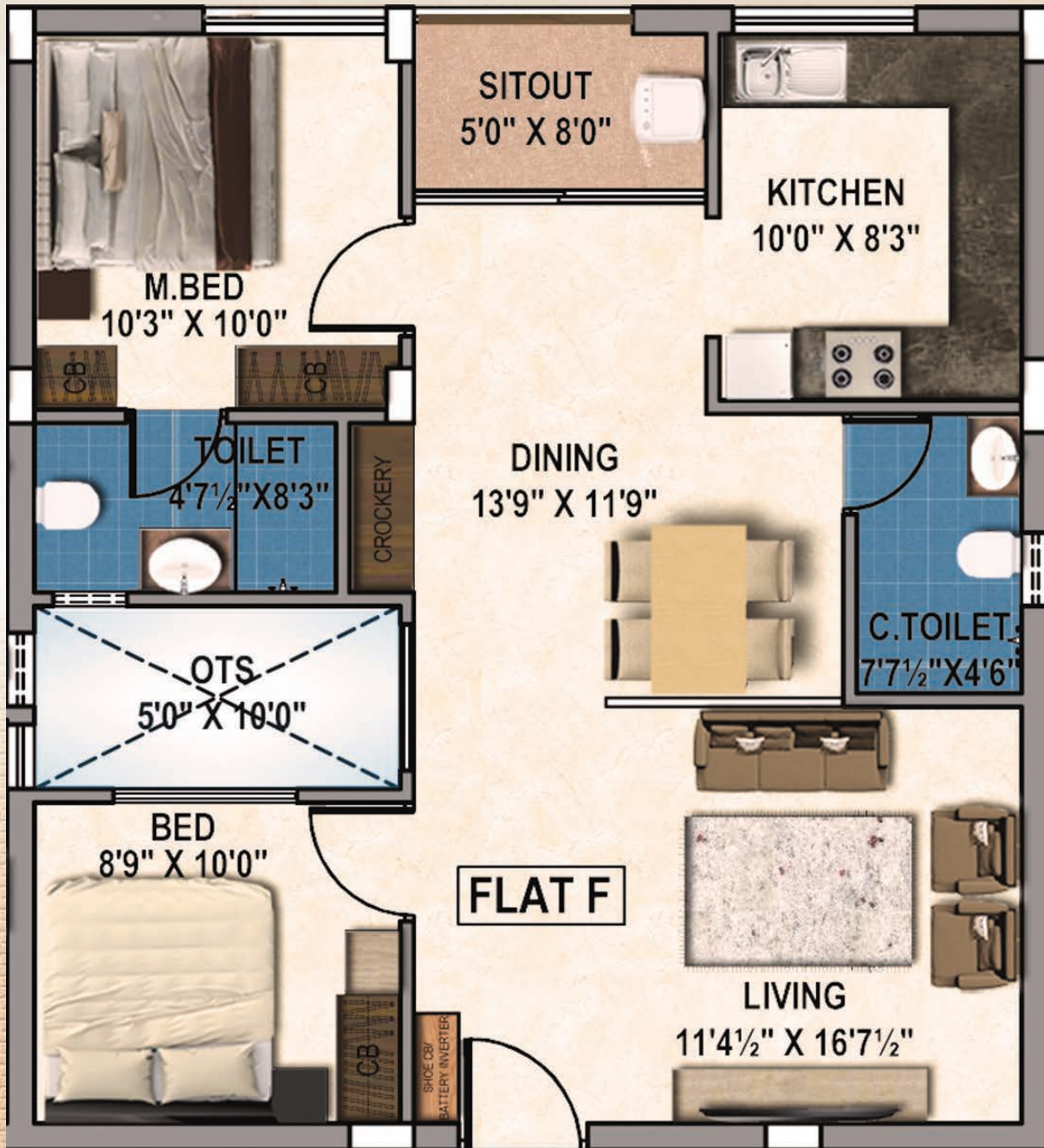
FLAT D - 939 SQ.FT



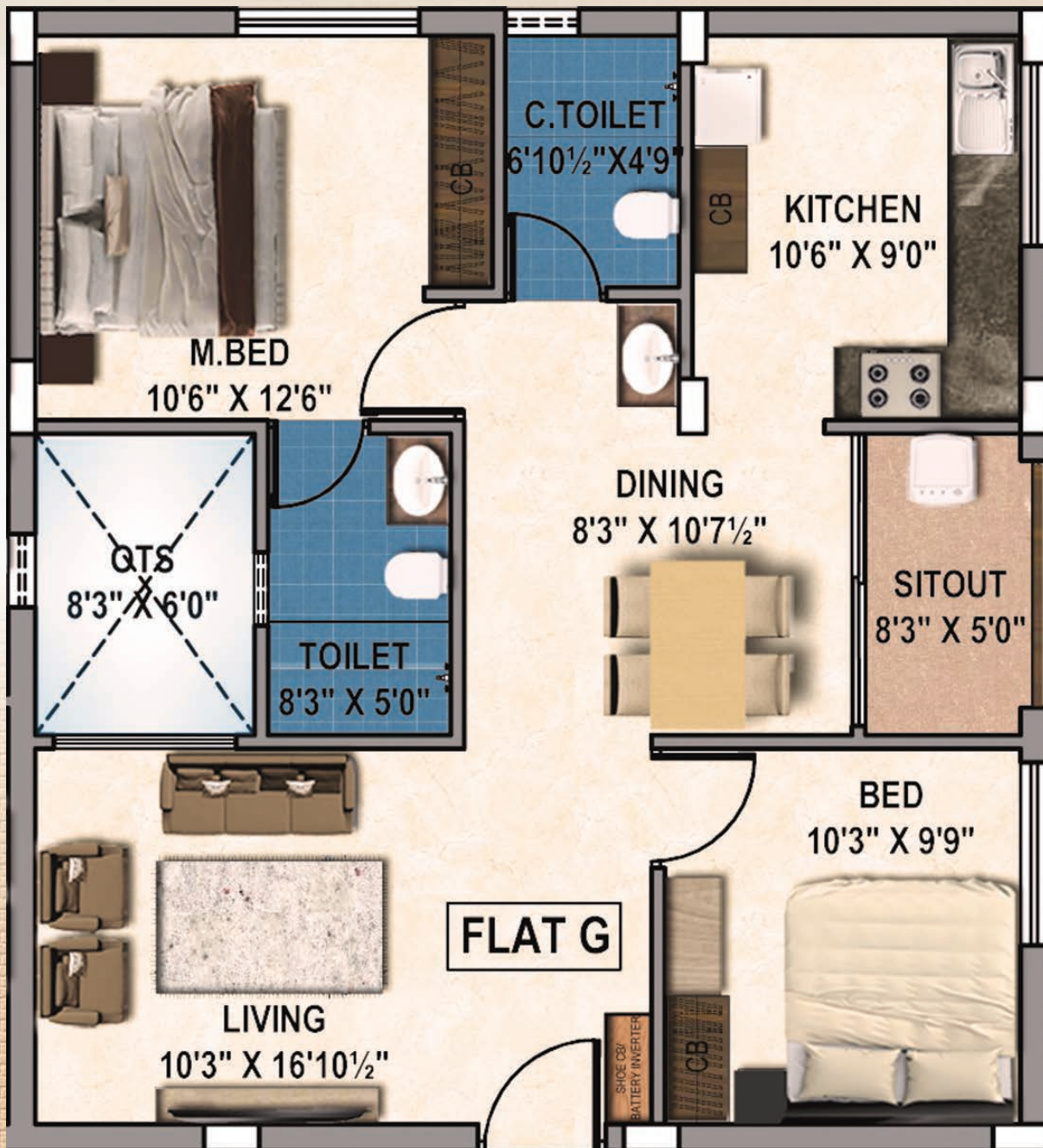
FLAT E - 1010 SQ.FT



FLAT F - 953 SQ.FT



FLAT G - 962 SQ.FT



SPECIFICATION

Structure

RCC Framed Structure
Internal Masonry - Flyash Bricks

Floor Finishes

Living and Dining : 1200mm x 600mm Vitrified tiles of reputed brand
Bedroom : 600mm x 600mm Vitrified tiles of reputed brand
Toilets : 300mm x 300mm Anti-skid ceramic tiles of reputed brand

Wall Finishes

Interior : Smooth finish with 2 coats of putty, 1 coat of primer & 2 coats of Acrylic emulsion
Exterior : 1 coat of primer & 2 coats of Exterior emulsion

Electrical

3 - phase electrical supply with MCB and RCCB for each apartment
Concealed wiring with modular switches and socket (Legrand or Equivalent)
Provision for TV in living and master bedroom with pre-wired coaxial cable for easy DTH Connectivity
Provision for fiber optical cable in living
Telephone point provision in living room and master bedroom
Provision for chimney, refrigerator, microwave oven, mixer/grinder
1 A/C provision for all bedrooms and living room

Kitchen

Granite counter top
Vitrified tiles laid 2 feet above the counter
Single bowl stainless steel sink of reputed brand
Provision for exhaust fan
Provision for washing machine in utility area

Sanitary Ware

Toilet comes with EWC of reputed brand
Health faucets will be provided in all toilets
CP fittings, hot and cold water mixer unit with overhead shower of reputed brand
Wall mounted wash basin in all toilets

Plumbing

CPVC concealed water lines

Separate arrangements will be made for bore water and corporation water

Doors and Windows

Main entrance door : Teak wood frame and teak finish flush shutters

Bedroom door : Teak frames with flush doors

Toilet door : Water proof flush doors

UPVC with clear glass panels with safety grills for all windows

Power Backing

100% Power backup for common amenities such as Lifts & common area lighting

Elevators

Two 6 passenger automatic lift with ARD function of reputed brand

Other Facilities

CCTV cameras with 24/7 security surveillance

Adequate landscape around the building

Shelves will be provided in all bedrooms

ARJITH ALLURE

Locate Us



MADURAI MAIN ROAD



CRAWFORD COLONY MAIN ROAD



RESIDENTIAL AREA

AROKIYASAMI PILLAI STREET



ST. KULANDHAI TERESA CHURCH

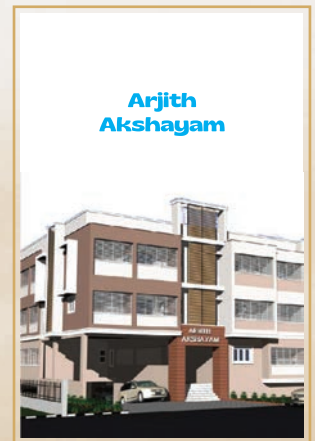
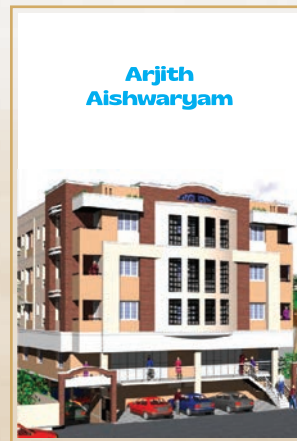
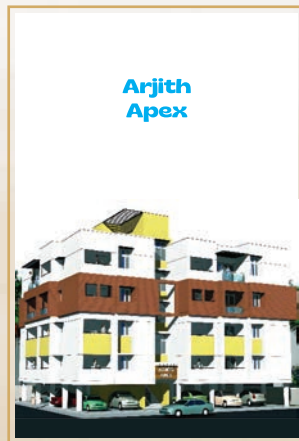


ABOUT US

Arjith Property Developers was founded in 2003 under the leadership of Mr.V.Gouthaman a qualified Civil Engineer. With his professional guidance and dedication, the company has grown into a trusted and reputed one in Trichy.

Mr.V.Gouthaman, has profound experience in the construction of different types of buildings viz. Villas, bungalows, Commercial complex and Multi storey buildings. Our company's motto is adherence to the approved plan, clear title deed, quality assurance and timely delivery.

PREVIOUS PROJECTS



SCHEDULE OF PAYMENT

At the time of booking	10%
At plinth Level	10%
On the completion of Stilt Floor roof	10%
On the completion of First Floor roof	10%
On the completion of Second Floor roof	10%
On the completion of Third Floor roof	10%
On the completion of Fourth Floor roof	10%
On the completion of Fifth Floor roof	10%
On the completion of Brick work	10%
On the completion of Plastering	5%
On the completion of Handing Over	5%

PROJECT APPROVED BY



ARJITH ALLURE

NO.13, Arockiaswamy Pillai Street, Crawford, Trichy - 620 012.

OUR CONSULTANTS

ARCHITECT

S.Subramanian A.I.I.A.,
S.S.Associates, Trichy-21.

STRUCTURAL CONSULTANT

R.Ganesan M.E.,(Structures)
Trichy RG Engineering Excellence
Private Limited, Trichy

MEP CONSULTANT

D. Nagarajan B.E
DNR Consultancy
Trichy/Chennai/Bangalore

ARJITH PROPERTY DEVELOPERS

Arjith Villa, C-38, 7th Cross, Thillai Nagar, Trichy - 18 Tamilnadu.

90471 86510 | 9952046510 | [E] : arjithallure@gmail.com