

TATA HOUSING[®]

LIVE A LIFE ABOVE
THE ORDINARY.



PRESENTING

MYST[®]



PLATINUM RATING IN IGBC CERTIFICATION

“ In a free enterprise,
just another stakeholder
fact the very purpose

the community is not
in business, but is in
of its existence.”

- Jamsetji Tata

A B O U T



MYST[®]

ECO-LUXURY VILLAS, KASAULI

Welcome to your own fairy tale

A heavenly abode that seems something straight out of childhood fairy tales. Only, this is for real! Perched atop a private hill, overlooking the Himalayan foothills, Myst is India's first residential development designed using sustainable architecture – an approach that creates luxury spaces, bringing residents closer to nature. The project was conceived by the pioneering Llewelyn Davies Yeang and subsequently detailed by the leading Indian design firm CP Kukreja Associates. This gated development is IGBC (Indian Green Building Council) platinum-rated. The contemporary architecture blends seamlessly with the unique mountain ecology of the area. The ridged mountains, crisp air and seasonal cascading rivulets, all become part of a living experience that sets Myst apart from any other residence.



Actual image shot on 18th March 2024



Actual image shot on 18th March 2024

Luxury for you, love for the environment

Sustainability is at the very core of the design at Myst. The bright and airy living spaces feature large balconies and extra-large windows to let the warm sunrays in, giving the interiors a bright, airy character. Even the master bedrooms have large glazed windows or spacious decks to take in the breathtaking scenery.

And finally, stone and faux timber are the main key materials used to create a rustic charm, along with planar walls near stone podiums and huge glass façades to lend a dash of modernity.





Actual image shot on 18th March 2024

Every day, enhanced naturally

The exclusive gated community has been designed by one of the world's leading experts in sustainable architecture, Llewelyn Davies Yeang.

Key Features

- Sunset Plaza to watch the sun take a dip behind the mountains
- Nature exploration zones, including Butterfly Garden and Biodiversity Park

Eco-design

- Rainwater Harvesting



Actual image shot on 31st May, 2022



Actual image shot on 31st May, 2022



Actual image shot on 5th December, 2017



Actual image shot on 31st May, 2022

LOCATION

- Kalka to **MYST 29 km**
- Chandigarh Airport to **MYST 65 km**
- Kalka Shimla Highway to **MYST 18 km**
- Nahan Highway to **MYST 5 km**





LUXEMONT[®]

A B O U T



Actual image shot on 31st May, 2022

An elevated lifestyle gets a whole new meaning

A thoughtfully crafted property, Luxemont is the latest offering at Myst. Taking luxury living to a whole new level, Luxemont boasts of lavish 2 and 3 BHK residences, designed for utmost comfort and convenience. With top-notch amenities, cascading rivulets, crisp air and ample views of the Himalayas, Luxemont is sure to make you feel on top of the world, literally!





The Residences





Luxemont at Myst boasts of exquisite 2 and 3 BHK residences, each offering stunning views of the Himalayas. And then, of course, everything you'd expect from this modern, heavenly home.



Gas leakage detector



Unique panoramic views



Panic alarm



Fully-fitted modular kitchen with hob and chimney



Digital door lock



Radiant floor heating in master bedroom



Video door phone



Best-in-class fittings



Amenities
that will leave you in awe





Welcome Desk


Hill View Restaurant


20,000 Sq. Ft. Multi-level Clubhouse


Outdoor Infinity Pool


Indoor
Temperature-controlled Pool
& Pool Bubblers

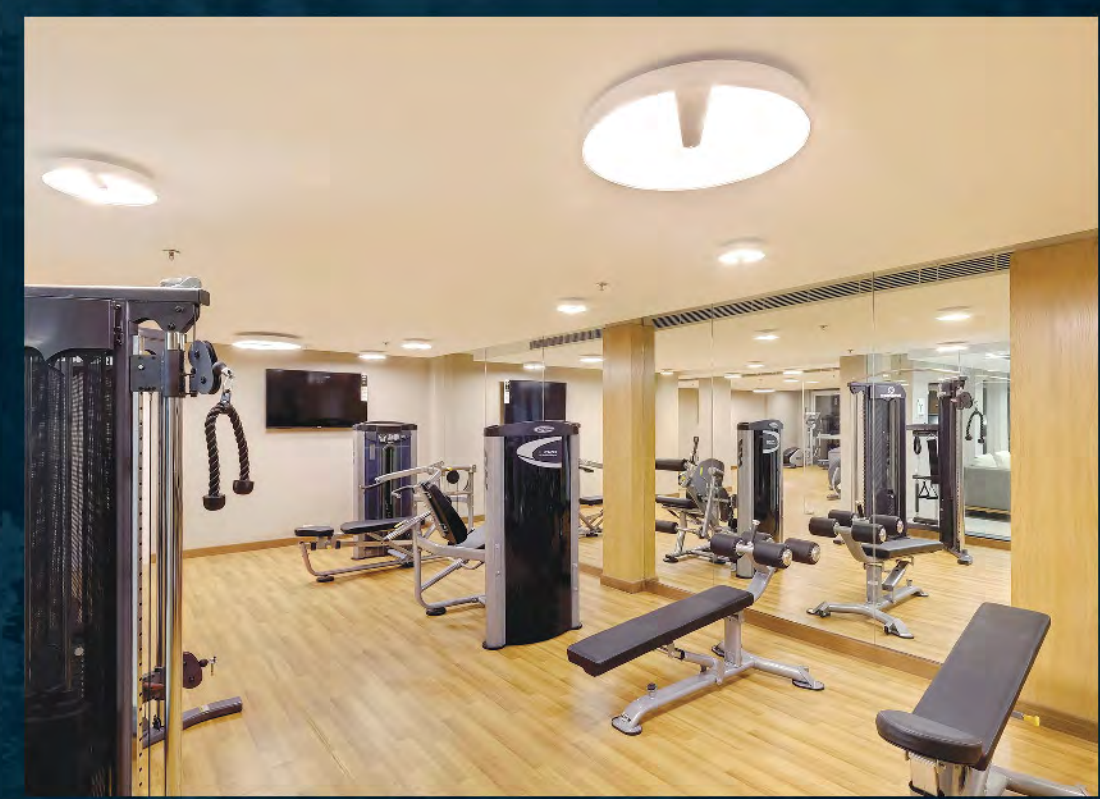

Spa with Steam, Sauna &
Massage Room



Actual image shot on 31st May, 2022



Actual images shot on 31st May, 2022



Actual images shot on 5th December, 2017





Actual image shot on 18th March 2024

Estate Services



Actual images shot on 5th December, 2017



Actual image shot on 5th December, 2017




House cleaning services




Doctor on call




Security service




Food home delivery

Images for representation purpose only



Artistic Impression with Map is not to scale. Subject to revision, due to change of plans and final approval by competent authorities. Trees and green area shown are for representation purpose only. Layout for reference purpose only. *Temple is not part of Project land. **Retail shall be operational post maximum occupancy.

LUXEMONT[®]

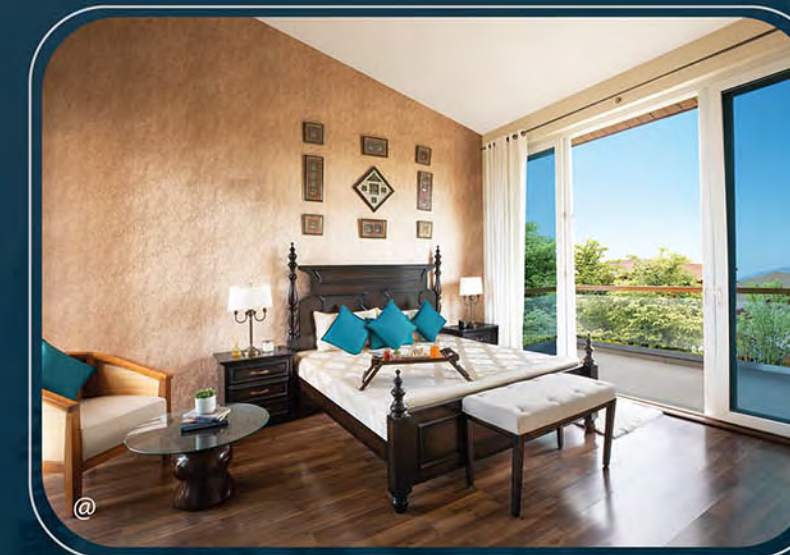


MASTER PLAN

SPECIFICATIONS

LIVING & DINING ROOM

- Engineered wooden flooring
- Veneer finished flush doors with digital door locks
- Seasoned Red Meranti door frames
- UPVC windows with plain glass
- Good quality plastic emulsion paint with pastel shades on internal walls

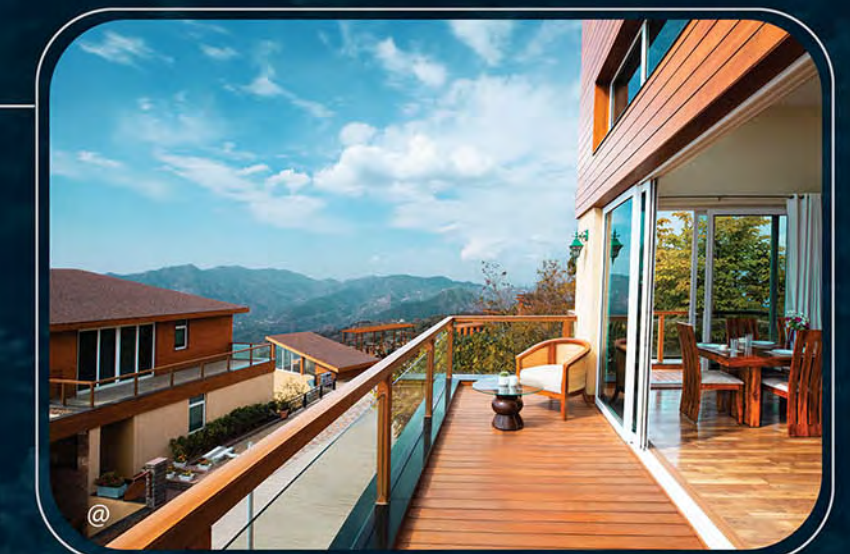


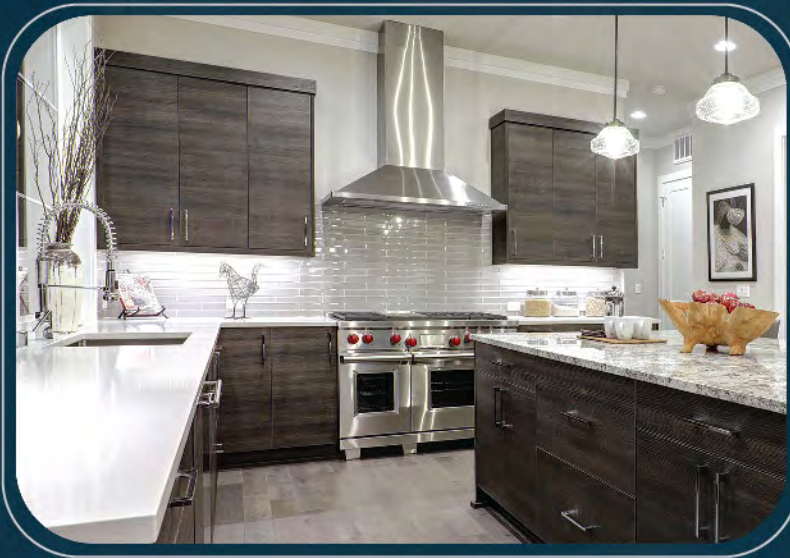
BEDROOMS

- Engineered wooden flooring
- UPVC windows with plain glass
- Laminated flush doors
- Radiant floor heating in master bedrooms
- Good quality plastic emulsion paint with pastel shades on internal walls

SUN DECKS

- Wood like flooring in decks outside living & dining room
- Anti-skid vitrified tiles in decks of other rooms
- Railing glass with wooden handrail





KITCHEN

- Fully fitted modular kitchen laminated panels with SS accessories and a hob and chimney
- Stainless steel sink – Double bowl with drain board
- 15 litre geyser
- Anti-skid vitrified tiles
- Brown Paradiso stone
- Exhaust fan

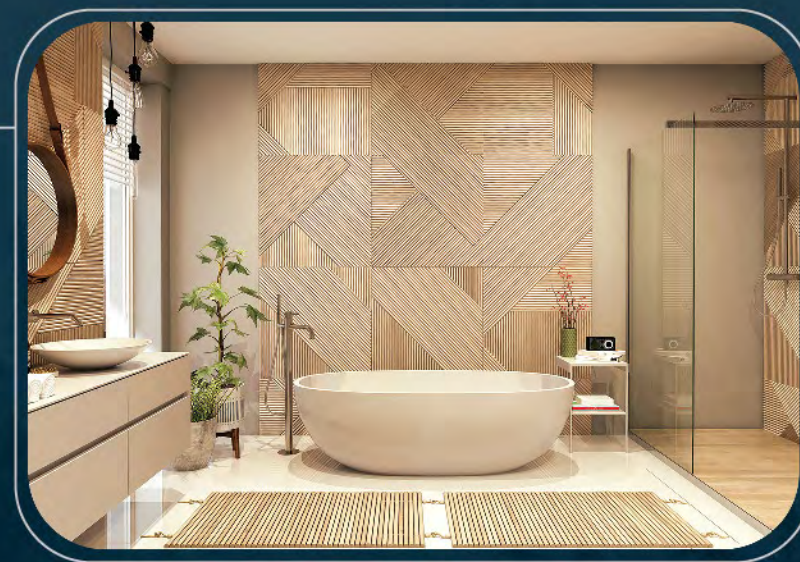


SECURITY SYSTEMS

- Main display unit and door camera*
- Fire sensor*
- CCTV surveillance

MASTER BATHROOM

- Premium quality CP & sanitary fittings with bathtub and 25 litre geyser*
- Shower panel with multi-flow showerhead*
- Exhaust fan



ELECTRICAL FIXTURES

- Concealed copper wiring with modular switches/sockets



OTHER BATHROOMS

- Premium quality CP & sanitary fittings with 25 litre geyser
- Glass shower partitions & shower panel*
- Exhaust fan

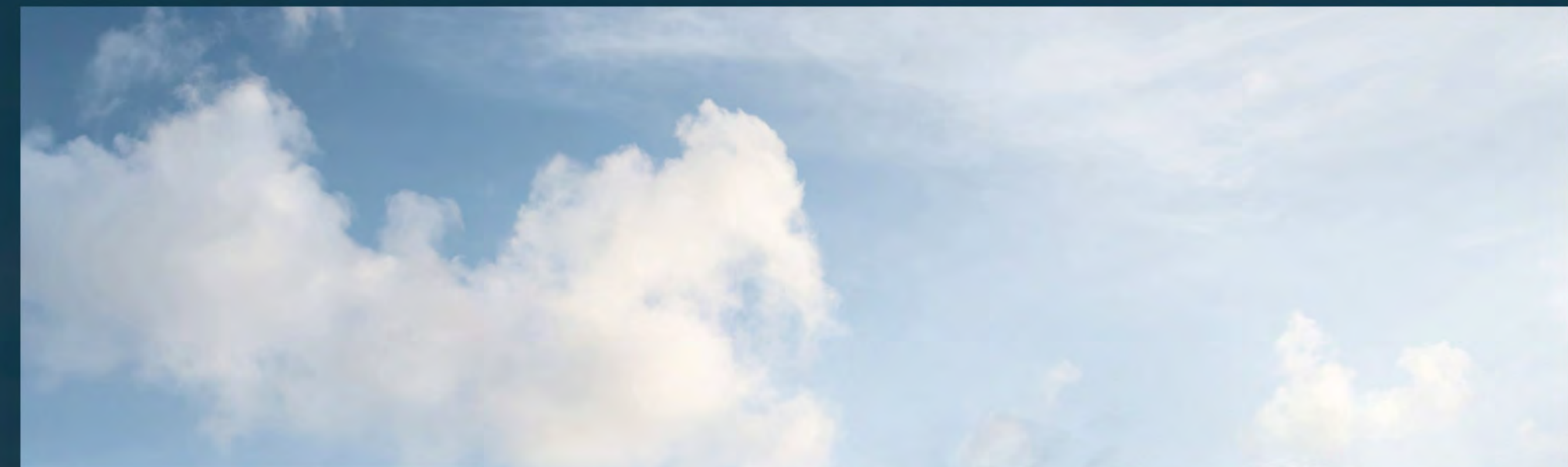


LIFTS*

- Stone finish for lift facia
- Car with SS/wooden/etching finish

A B O U T

Tata Group &
TATA HOUSING[®]



VALUES AS STRONG AS OUR FOUNDATIONS



INTEGRITY

We will be fair, honest, transparent and ethical in our conduct; everything we do must stand the test of public scrutiny.



EXCELLENCE

We will be passionate about achieving the highest standards of quality, always promoting meritocracy.



UNITY

We will invest in our people and partners, enable continuous learning, and build caring and collaborative relationships based on trust and mutual respect.



RESPONSIBILITY

We will integrate environmental and social principles in our businesses, ensuring that what comes from the people goes back to the people many times over.



PIONEERING

We will be bold and agile, courageously taking on challenges, using deep customer insight to develop innovative solutions.

A B O U T

TATA HOUSING[®]

Our journey began in 1984, on a road paved more than 150 years ago. Tata Housing Development Company Limited follows the same DNA as our parent group. It is something that governs our very core, enabling us to leave a mark on the real estate development industry through ethical operations, transparency, and unparalleled quality of service. We are committed to providing high-quality homes and properties, exceptional customer service, sustainable practices, and innovation – this sums up the values that have been the guiding principle of our work. Our mission as a real estate development company is ‘to delight customers by providing quality life spaces through continuous innovations’.

TATA HOUSING[®]

Pan-India Projects



Delivering homes across India

With projects across all regions, Tata Realty and Infrastructure Limited is rapidly changing the face of real estate in India. We already have a strong foothold across major cities in the country. And we're just getting started.



Other delivered projects

EDEN COURT - KOLKATA

AQUILA HEIGHTS - BENGALURU

RAISINA RESIDENCY - GURUGRAM

PRIMANTI - GURUGRAM

GURGAON GATEWAY - GURUGRAM

INORA PARK - PUNE

PRIVE - LONAVALA

MYST

Scan the QR code
for a Digitour.



To know more, call: 1800 266 5022

SITE ADDRESS: Village Kalth, Tehsil Kasauli, District Solan, Himachal Pradesh - 173206.

H.P. RERA Registration No. RERAHPSOP08170001 available on <https://hprera.nic.in/>. The project is being developed by Princeton Infrastructure Private Limited ("Developer") – Subsidiary of Tata Housing Development Company Limited. The approvals can be checked at the site office and at the office of the Developer. Sale is subject to the terms of Application Form and Agreement for Sale. Furniture, fixtures, fittings and white goods shown do not form part of the agreement to sale. The amenities are common for all residents. Developer reserves the right to make changes as per prevailing Government norms. "TATA" and "TATA Housing" are the registered trademarks of Tata Sons Private Limited. 'Myst' is the registered trademark of Princeton Infrastructure Private Limited. Please refer to the latest brochure and sales documents prior to investing in the property. For more information, please contact our sales team at Myst, village Kalth, Tehsil Kasauli, Dist. Solan, Himachal Pradesh - 173206. Visit: <http://www.tatahousing.com/project/myst/>



Scan the QR code for RERA details